

S-BEAMS

Page 199

STC, LOW-CAPACITY, ALLOY STEEL



Ideally suited for batching and filling, conveyor and hopper/tank weighing. Nickel plated, high-alloy steel construction. Capacities range from 50 to 200 lb. Complete with 20 ft of load cell cable.



Page 200

STC, ALLOY STEEL



Ideally suited for batching, filling and hopper/tank weighing. Nickel plated, alloy steel construction. Capacities range from 250 to 40,000 lb. Complete with 20 ft of load cell cable.



Page 201

STC SS, STAINLESS STEEL



The VPG Celtron STC has been a popular industry s-beam for some time, and for the first time is available in a stainless steel version. This high-quality product is ideal for tension applications and provides the additional protection of being manufactured from stainless steel. Capacities range from 250 to 10,000 lb. Each unit is provided with a standard 20 ft of load cell cable.



Page 202

STC-HSS, STAINLESS STEEL



The VPG Celtron STC HSS provides upgraded protection to the standard environmentally sealed s-beam for dry but dirty suspended tank, hopper and mechanical replacement applications. An economical alternative to fully stainless, welded s-beams, the STC HSS provides a mid-range solution where none previously existed. Available in capacities ranging from 500 to 10,000 lb. Each unit includes 20 ft of standard load cell cable.

SINGLE-ENDED BEAMS

Page 203

SQB, ALLOY STEEL



Single-ended beam designed for low-profile scales and platform, hopper and tank weighing applications. NTEP Certified cells in capacities from 1,000 to 10,000 lb; Non-NTEP Certified cells in 500 lb, 15,000 lb and 20,000 lb capacities. Complete with 20 ft of load cell cable.



Page 204

SQB-HSS, STAINLESS STEEL



The VPG Celtron SQB-HSS stainless steel, welded-seal, single-ended beam is a precision load cell offering exceptional performance and reliability in hostile environment applications typical of food and chemical processing. Designed for single or multiple load cell installations, the SQB-HSS is provided with a threaded load hole for easy adaptation of mounting hardware or leveling feet typical of floor scales. Capacities range from 1,000 to 10,000 lb. Complete with 20 ft of load cell cable.



Page 205

MBB, ALLOY STEEL



Ultra-small load cell designed for bench, platform, tank and conveyor weighing applications. Nickel plated and environmentally protected with a stainless steel side plate. Capacities range from 50 to 250 lb. Complete with 5 ft of load cell cable.



SINGLE-ENDED BEAMS

Page 206

SEB, ALLOY STEEL



The VPG Celtron SEB is a single-ended beam designed for various scale and process weighing applications. This unit is manufactured from high-alloy steel that has been nickel plated to ensure an IP67 rating. The product is OIML approved and has metric envelope capacities ranging from 500 kg to 2.5 t. Each unit is provided with 20 ft of standard load cell cable to deliver an accurate yet economical package.



DOUBLE-ENDED BEAMS

Page 207

DSR, ALLOY STEEL



Double-ended beam with center loading. Designed for tank, hopper and silo applications. Capacities range from 1,000 to 75,000 lb. Complete with 25 ft of load cell cable.



Page 208

CLB, ALLOY STEEL



The VPG Celtron CLB is an alloy steel, nickel-plated, double-ended beam that is ideal for applications in truck, track, tank and hopper applications. This product is of the center-loaded design, and is compatible with both the MVS and TSA mounting assemblies. Available in capacities ranging from 20,000 to 125,000 lb, with all units being provided with 25 ft of load cell cable.



SINGLE POINTS

Page 209

LPS, ALUMINUM



The LPS is the lightest model of the Celtron single-point load cell family. The design is most suitable for mass production operations. LPS is constructed of anodized aluminum and is fully potted IP65 levels, providing excellent protection against moisture ingress.



Page 210

LOC, ALUMINUM, HEAVY CAPACITY



Low-profile, off-center loading load cell. Designed for direct mounting of a weighing platform and hanging scales. Long-term stability and durability are maintained. Capacities range from 100 to 500 kg. Complete with 3.1 m of load cell cable.



COMPRESSION CANISTERS

Page 211

LCD, ALLOY STEEL



Environmentally protected, low-profile compression disk. 5,000 lb and 10,000 lb models can also be used in tension-loading applications. The shear web design provides excellent performance and a low-profile feature makes it ideal for applications where height is critical. Capacities range from 5,000 to 100,000 lb. Complete with 50 ft of load cell cable.



STC Low Capacity

Alloy Steel, Environmentally Sealed, IP67



Picture is a representation of actual product.

Approvals

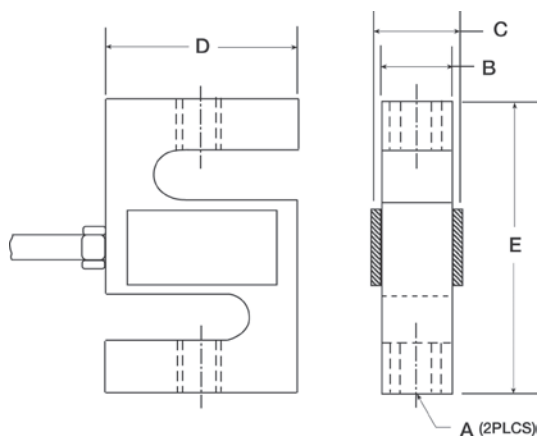


Order Information

Load Rating	Part #	Est. Weight	Price
50 lb	30044	2 lb	\$185.00
100 lb	30045	2 lb	\$185.00
150 lb	30046	2 lb	\$185.00
200 lb	35787	2 lb	\$185.00

Dimensions

Rated Capacity	A	B	C	D	E
lb/in					
50 to 200	1/4-28 UNF	0.50	1.05	2.00	2.50



Interchangeable Products

RICE LAKE WEIGHING SYSTEMS

RL20000I..... page 104

Weigh Module Available

RICE LAKE WEIGHING SYSTEMS

ITCM-Isolated Tension Cell Mount..... page 38

Specifications

Full Scale Output:

3.0 mV/V (50 lb capacity, 2.0 mV/V)

Output Resistance:

350 (± 3) ohm

Input Resistance:

385 (± 5) ohm

Material/Finish:

High-alloy steel, nickel plated

Temperature:

Operating range
0 °F to 150 °F (-18 °C to 65 °C)

Seal Type:

Environmentally sealed, IP67

Safe Overload:

150% full scale

Rated Excitation:

5 to 10 VDC (15 V maximum)

Nonlinearity:

0.03% full scale

Hysteresis:

0.02% full scale

Insulation Resistance:

5,000 megohm

Cable Length:

20 ft

Cable Diameter:

0.200 in
Polyurethane jacket

Cable Color Code:

Red +Excitation
Black -Excitation
Green +Signal
White -Signal

Warranty:

One-year limited

Approvals:

cFMus



Picture is a representation of actual product

Approvals



Order Information

Load Rating	Part #	Est. Weight	Price
NTEP Certified			
250 lb	30047	2 lb	\$195.00
500 lb	30051	2 lb	\$195.00
750 lb	30054	2 lb	\$195.00
1,000 lb	30067	2 lb	\$195.00
1,500 lb	30069	2 lb	\$195.00
2,000 lb	30072	3 lb	\$195.00
2,500 lb	30073	3 lb	\$195.00
3,000 lb	30074	3 lb	\$265.00
5,000 lb	30076	3 lb	\$375.00
10,000 lb	30077	5 lb	\$375.00
15,000 lb	30078	9 lb	\$475.00
20,000 lb	30079	17 lb	\$775.00
Non-NTEP Certified			
40,000 lb	46674	39 lb	\$955.00

Special Load Cells

Load Rating	Part #	Est. Weight	Price
30 ft Cable Matched Outputs			
3,000 lb	67882	3 lb	\$288.00
5,000 lb	67881	4 lb	\$525.00
20,000 lb	67883	17 lb	\$865.00

Dimensions

Rated Capacity	A	B	C	D	E
lb/in					
250	3/8-24 UNF	0.75	0.50	2.00	3.00
500 to 1,500	1/2-20 UNF	1.00	0.75	2.00	3.00
2,000 to 3,000	1/2-20 UNF	1.25	1.00	2.00	3.00
5,000	3/4-16 UNF	1.25	1.00	3.00	4.25
10,000	3/4-16 UNF	1.25	1.00	3.50	4.75
15,000	1-14 UNS	1.50	1.25	4.00	5.50
20,000	1 1/4-12 UNF	2.19	2.00	5.00	7.00
40,000	1 1/2-12 UNF	2.75	2.50	6.00	10.00

Interchangeable Products

RICE LAKE WEIGHING SYSTEMS

RL20001I page 107

VPG® SENSORTRONICS

60001 page 287

Weigh Module Available

RICE LAKE WEIGHING SYSTEMS

ITCM-Isolated Tension Cell

Mount page 38

Specifications

Full Scale Output:

3.0 mV/V nominal

Output Resistance:

350 (± 3) ohm

Input Resistance:

385 (± 5) ohm

Material/Finish:

High-alloy steel, nickel plated

Temperature:

Compensated range
14 °F to 104 °F (-10 °C to 40 °C)
Operating range
0 °F to 150 °F (-18 °C to 65 °C)

Seal Type:

Environmentally sealed, IP67

Safe Overload:

150% full scale

Rated Excitation:

5 to 10 VDC (15 V maximum)

Non-Repeatability:

0.01% full scale

Combined Error:

0.02% full scale

Insulation Resistance:

5,000 megohm

Cable Length:

20 ft

Cable Diameter:

250 to 20,000 lb: 0.200 in
40,000 lb: 0.305 in
Polyurethane jacket

Cable Color Code:

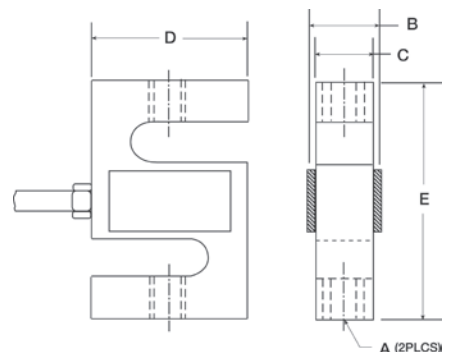
Red +Excitation
Black -Excitation
Green +Signal
White -Signal

Warranty:

One-year limited

Approvals:

cFMus
NTEP





Picture is a representation of actual product

Approvals

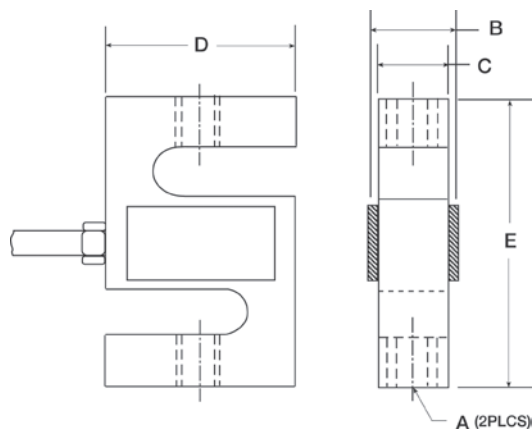


Order Information

Load Rating	Part #	Est. Weight	Price
250 lb	46659	2 lb	\$312.00
500 lb	46661	2 lb	\$312.00
750 lb	46662	2 lb	\$312.00
1,000 lb	46663	2 lb	\$312.00
1,500 lb	46664	2 lb	\$312.00
2,000 lb	46665	2 lb	\$312.00
2,500 lb	46666	3 lb	\$335.00
3,000 lb	46667	2 lb	\$335.00
5,000 lb	46668	4 lb	\$470.00
10,000 lb	46669	4 lb	\$480.00

Dimensions

Rated Capacity	A	B	C	D	E
lb/in					
250	3/8-24 UNF	0.75	0.50	2.00	3.00
500 to 1,500	1/2-20 UNF	1.00	0.75	2.00	3.00
2,000 to 3,000	1/2-20 UNF	1.25	1.00	2.00	3.00
5,000	3/4-16 UNF	1.25	1.00	3.00	4.25
10,000	3/4-16 UNF	1.25	1.00	3.50	4.25



Interchangeable Products

VPG® SENSORTRONICS

60050 page 288

Specifications

Full Scale Output:

3.0 mV/V nominal

Output Resistance:

350 (± 3) ohm

Input Resistance:

385 (± 5) ohm

Material/Finish:

Stainless steel

Temperature:

Operating range
0 °F to 150 °F (-18 °C to 65 °C)

Seal Type:

Environmentally sealed, IP67

Safe Overload:

150% full scale

Rated Excitation:

5 to 10 VDC (15 V maximum)

Nonlinearity:

0.03% full scale

Hysteresis:

0.02% full scale

Insulation Resistance:

5,000 megohm

Cable Length:

20 ft

Cable Diameter:

0.200 in
Polyurethane jacket

Cable Color Code:

Red +Excitation
Black -Excitation
Green +Signal
White -Signal

Warranty:

One-year limited

Approvals:

cFMus



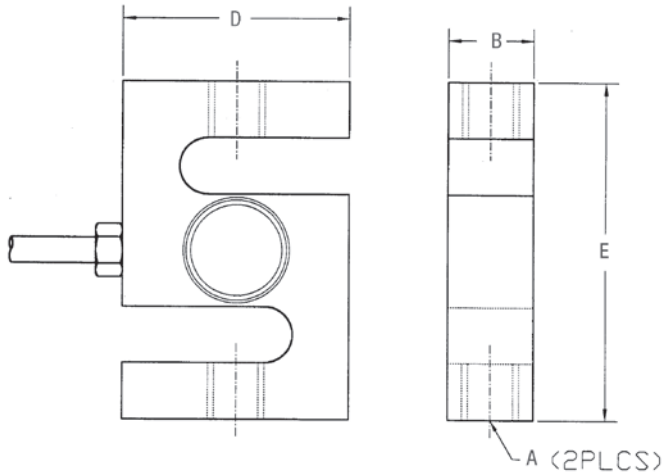
Picture is a representation of actual product

Order Information

Load Rating	Part #	Est. Weight	Price
500 lb	69326	2 lb	\$493.00
750 lb	69327	2 lb	\$493.00
1,000 lb	69328	2 lb	\$493.00
1,500 lb	69329	2 lb	\$493.00
2,000 lb	69330	2 lb	\$493.00
2,500 lb	69331	2 lb	\$493.00
3,000 lb	69332	2 lb	\$525.00
5,000 lb	69333	4 lb	\$736.00
10,000 lb	69334	4 lb	\$736.00

Dimensions

Rated Capacity	A	B	D	E
lb/in				
500 to 3,000	1/2-20 UNF	1.00	2.00	2.97
5,000 to 10,000	3/4-16 UNF	1.00	3.00	4.25



Weigh Module Available

RICE LAKE WEIGHING SYSTEMS

ITCM-Isolated Tension Cell Mount page 38

Specifications

Full Scale Output:

2.0 mV/V

Output Resistance:

350 (± 3) ohm

Input Resistance:

385 (± 5) ohm

Material/Finish:

Stainless steel

Temperature:

Operating range
0 °F to 150 °F (-18 °C to 65 °C)

Seal Type:

Welded-seal, IP67

Safe Overload:

150% full scale

Rated Excitation:

5 to 10 VDC (15 V maximum)

Combined Error:

0.05%

Insulation Resistance:

5,000 megohms

Cable Length:

20 ft

Cable Diameter:

0.200 in

Polyurethane jacket

Cable Color Code:

Red +Excitation
Black -Excitation
Green +Signal
White -Signal

Warranty:

One-year limited



Picture is a representation of actual product

Approvals



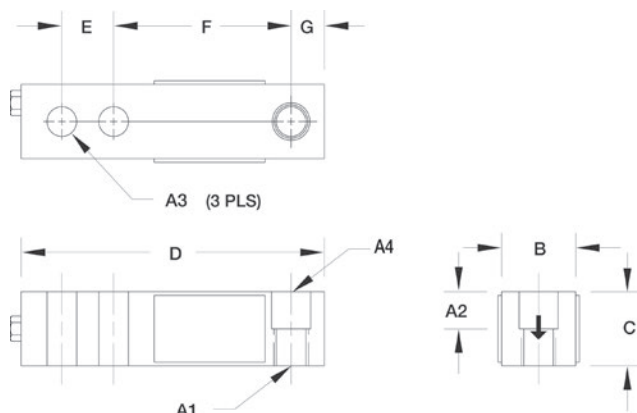
Order Information

Load Rating	Part #	Est. Weight	Price
NTEP Certified			
1,000 lb	30106	3 lb	\$205.00
2,000 lb	30109	3 lb	\$205.00
2,500 lb	30112	3 lb	\$205.00
3,000 lb	30113	3 lb	\$205.00
4,000 lb	30270	3 lb	\$205.00
5,000 lb SE	30114	3 lb	\$205.00
5,000 lb LE	30115	5 lb	\$350.00
10,000 lb	30117	5 lb	\$350.00
Non-NTEP Certified			
500 lb	30101	3 lb	\$196.00
15,000 lb	30118	9 lb	\$455.00
20,000 lb	30121	10 lb	\$470.00

SE=small envelope; LE=large envelope

Dimensions

Rated Capacity	A4	A2	A3	A1	B	C	D	E	F	G
lb/in										
500	0.53 dia	0.50	0.53	1/2-20 UNF	1.25	1.00	5.12	1.00	3.00	0.50
1,000 to 5,000 SE	0.53 dia	0.62	0.53	1/2-20 UNF	1.25	1.25	5.12	1.00	3.00	0.50
5,000 LE to 10,000	0.78 dia	0.75	0.78	3/4-16 UNF	1.50	1.50	6.75	1.50	3.75	0.75
15,000 to 20,000	1.03 dia	1.00	1.03	1-14 UNS	2.00	2.00	8.88	2.00	4.88	1.00



Interchangeable Products

VPG® SENSORTRONICS

65023A..... page 293

Weigh Module Available

RICE LAKE WEIGHING SYSTEMS

RL50210TA..... page 41

RICE LAKE WEIGHING SYSTEMS

RL1800 Series..... page 52

Specifications

Full Scale Output:

3.0 mV/V

Output Resistance:

350 (± 3) ohm

Input Resistance:

385 (± 5) ohm

Material/Finish:

High-alloy steel, nickel plated

Temperature:

Compensated range

14 °F to 104 °F (-10 °C to 40 °C)

Operating range

0 °F to 150 °F (-18 °C to 65 °C)

Seal Type:

Environmentally sealed, IP67

Safe Overload:

150% full scale

Safe Sideload:

100% full scale

Rated Excitation:

5 to 10 VDC (15 V maximum)

Combined Error:

0.02% full scale

Insulation Resistance:

5,000 megohm

Deflection at Capacity:

500 to 1,000 lb: 0.013 in

2,000 to 3,000 lb: 0.015 in

4,000 to 5,000 lb: 0.025 in

10,000 lb: 0.035 in

Cable Length:

20 ft

Cable Diameter:

0.200 in

Polyurethane jacket

Cable Color Code:

Red +Excitation

Black -Excitation

Green +Signal

White -Signal

Warranty:

One-year limited

Approvals:

cFMus

NTEP

SQB-HSS

Stainless Steel, Welded Seal, NTEP Certified 1:5,000 Class III Multiple Cell, IP67



Picture is a representation of actual product

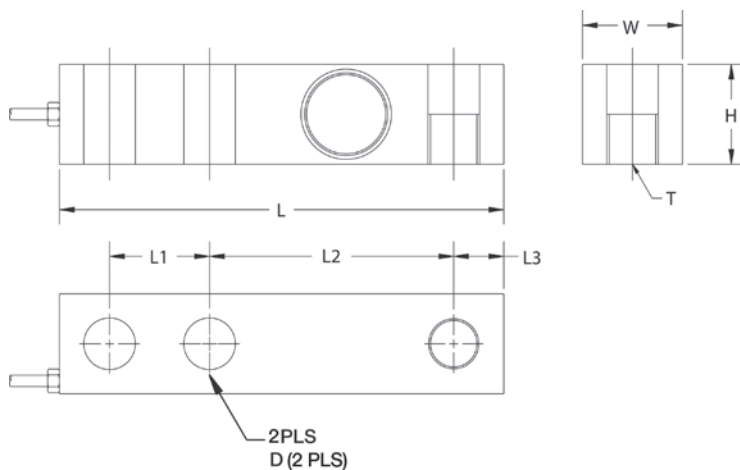
Approvals**Order Information**

Load Rating	Part #	Est. Weight	Price
1,000 lb	67118	3 lb	\$344.00
2,000 lb	67119	3 lb	\$344.00
2,500 lb	67120	3 lb	\$344.00
3,000 lb	67121	3 lb	\$344.00
4,000 lb	67122	3 lb	\$344.00
5,000 lb SE	67123	3 lb	\$344.00
5,000 lb LE	67124	5 lb	\$450.00
10,000 lb	67125	5 lb	\$450.00

SE=small envelope; LE=large envelope

Dimensions

Rated Capacity	L	L1	L2	L3	W	H	D	T
lb/in								
1,000 to 5,000 SE	5.12	1.00	3.00	0.50	1.25	1.25	0.53	1/2-20 UNF
5,000 LE to 10,000	6.75	1.50	3.75	0.75	1.50	1.50	0.78	3/4-16 UNF

**Interchangeable Products**

VPG® SENSORTRONICS

65083..... page 296**Weigh Module Available**

RICE LAKE WEIGHING SYSTEMS

RL1800 Series..... page 52**Specifications****Full Scale Output:**

3.0 mV/V

Output Resistance:

350 (± 3) ohm

Input Resistance:

385 (± 5) ohm

Material/Finish:

Stainless steel

Temperature:

Compensated range

14 °F to 104 °F (-10 °C to 40 °C)

Operating range

0 °F to 150 °F (-18 °C to 65 °C)

Seal Type:

Welded-seal, IP67

Safe Overload:

150% full scale

Safe Sideload:

100% full scale

Rated Excitation:

5 to 10 VDC (15 V maximum)

Combined Error:

0.02 full scale

Insulation Resistance:

5,000 megohm

Cable Length:

20 ft

Cable Diameter:

0.200 in

Polyurethane jacket

Cable Color Code:

Red +Excitation

Black -Excitation

Green +Signal

White -Signal

Warranty:

One-year limited

Approvals:

cFMus

NTEP



Picture is a representation of actual product

Approvals

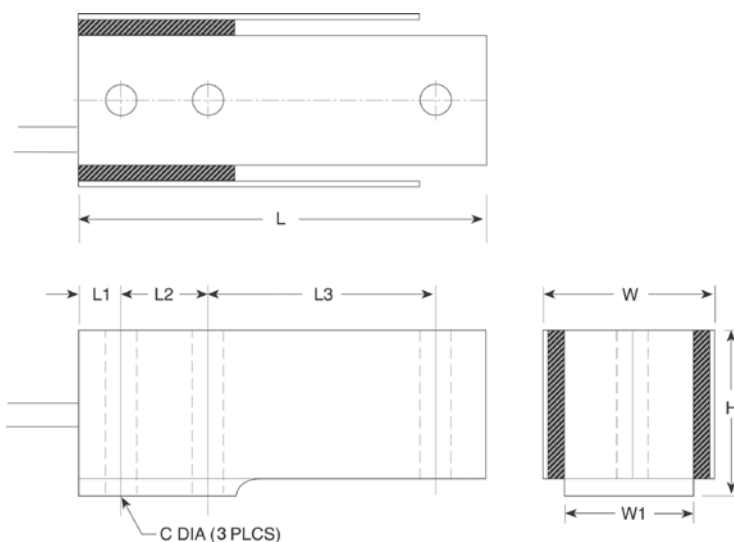


Order Information

Load Rating	Part #	Est. Weight	Price
50 lb	30130	2 lb	\$205.00
100 lb	30131	2 lb	\$205.00
150 lb	30132	2 lb	\$205.00
250 lb	35786	2 lb	\$205.00

Dimensions

Rated Capacity lb/in	C	W	W1	H	L	L1	L2	L3
50 to 150	0.17	0.75	0.50	0.98	2.38	0.25	0.50	1.33
250	0.17	1.00	0.75	0.98	2.38	0.25	0.50	1.33



Interchangeable Products

INTERFACE®
MB

Specifications

Full Scale Output:

3.0 mV/V

Output Resistance:

350 (± 3) ohm

Input Resistance:

385 (± 5) ohm

Material/Finish:

High-alloy steel, nickel plated

Temperature:

Operating range
0 °F to 150 °F (-18 °C to 65 °C)

Seal Type:

Environmentally sealed, IP65

Safe Overload:

150% full scale

Rated Excitation:

5 to 10 VDC (15 V maximum)

Nonlinearity:

0.03% full scale

Hysteresis:

0.02% full scale

Insulation Resistance:

5,000 megohm

Cable Length:

5 ft

Cable Color Code:

Red +Excitation
Black -Excitation
Green +Signal
White -Signal

Warranty:

One-year limited

Approvals:

cFMus



Picture is a representation of actual product

Approvals

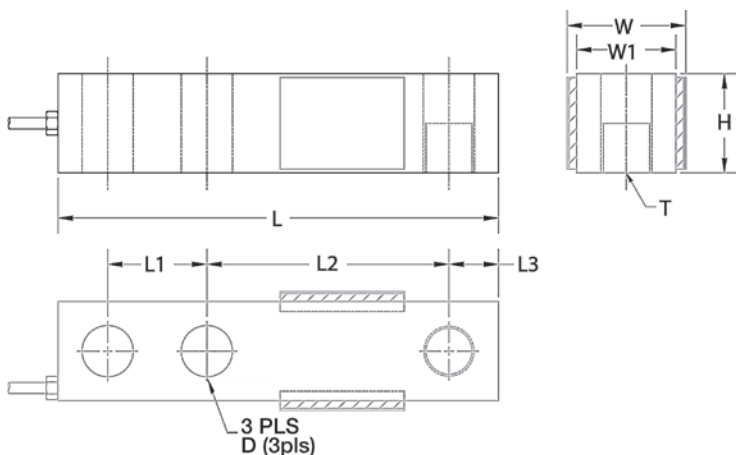


Order Information

Load Rating	Part #	Est. Weight	Price
500 kg	69315	3 lb	\$228.00
1 t	69316	3 lb	\$228.00
1.5 t	69317	3 lb	\$228.00
2 t	69318	3 lb	\$228.00
2.5 t	69319	3 lb	\$228.00

Dimensions

Rated Capacity	L	L1	L2	L3	W	W1	H	D	T
kg-t/in									
500 to 2.5	5.12	1.00	3.00	0.50	1.50	1.25	1.25	0.53	M12 x 1.75



Specifications

Full Scale Output:

3.0 mV/V

Output Resistance:

350 (± 3) ohm

Input Resistance:

385 (± 5) ohm

Material/Finish:

High-alloy steel, nickel plated

Temperature:

Compensated range

14 °F to 104 °F (-10 °C to 40 °C)

Operating range

0 °F to 150 °F (-18 °C to 65 °C)

Seal Type:

Environmentally sealed, IP67

Safe Overload:

150% full scale

Safe Sideload:

100% full scale

Rated Excitation:

5 to 10 VAC/DC (15 V maximum)

Combined Error:

0.025%

Insulation Resistance:

5,000 megohm

Cable Length:

20 ft

Cable Diameter:

0.200 in

Polyurethane jacket

Cable Color Code:

Red +Excitation

Black -Excitation

Green +Signal

White -Signal

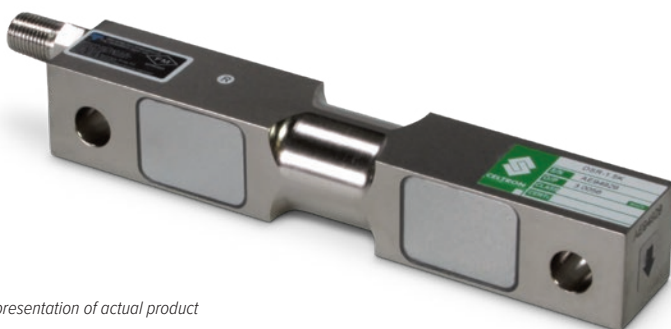
Warranty:

One-year limited

Approvals:

cFMus

OIML



Picture is a representation of actual product

Approvals



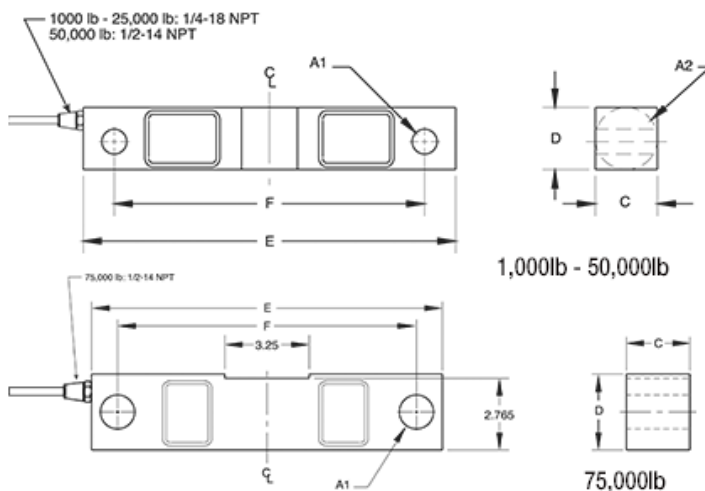
Order Information

Load Rating	Part #	Est. Weight	Price
1,000 lb	30080	4 lb	\$525.00
1,500 lb	30081	4 lb	\$525.00
2,000 lb	30088	4 lb	\$525.00
2,500 lb	30089	4 lb	\$525.00
3,000 lb	30091	4 lb	\$525.00
5,000 lb	30094	4 lb	\$525.00
10,000 lb	30095	7 lb	\$610.00
15,000 lb	30096	7 lb	\$610.00
20,000 lb	30097	7 lb	\$610.00
25,000 lb	30098	7 lb	\$610.00
50,000 lb	30099	25 lb	\$875.00
75,000 lb*	30100	25 lb	\$875.00

*75,000 lb capacity has a square center

Dimensions

Rated Capacity	A1	A2	C	D	E	F
lb/in						
1,000 to 5,000	0.50	1.25	1.25	1.25	7.50	6.25
10,000 to 25,000	0.81	1.99	1.44	1.94	8.75	7.50
50,000	1.31	3.00	2.44	2.94	13.50	11.50
75,000	1.31	—	2.44	2.94	13.50	11.50



Interchangeable Products

RICE LAKE WEIGHING SYSTEMS

RL75016 page 143

RICE LAKE WEIGHING SYSTEMS

RL75016WHE page 147

VPG® SENSORTRONICS

65016 page 302

VPG® REVERE

5203

Weigh Module Available

RICE LAKE WEIGHING SYSTEMS

RL1600 Series .page 77 and page 79

Specifications

Full Scale Output:

3.0 mV/V

Output Resistance:

700 (± 5) ohm

Input Resistance:

770 (± 10) ohm

Material/Finish:

High-alloy steel, nickel plated

Temperature:

Operating range
0 °F to 150 °F (-18 °C to 65 °C)

Seal Type:

Environmentally sealed, IP67

Safe Overload:

150% full scale

Safe Sideload:

100% full scale

Rated Excitation:

5 to 10 VDC (15 V maximum)

Nonlinearity:

0.03% full scale

Hysteresis:

0.02% full scale

Insulation Resistance:

5,000 megohm

Deflection at Capacity:

1,000 to 3,000 lb: 0.01 in
5,000 lb: 0.015 in
10,000 to 20,000 lb: 0.022 in
25,000 lb: 0.036 in
50,000 lb: 0.052 in
75,000 lb: 0.07 in

Cable Length:

25 ft

Cable Diameter:

1,000 to 25,000 lb: 0.200 in
50,000 to 75,000 lb: 0.305 in
Polyurethane jacket

Cable Color Code:

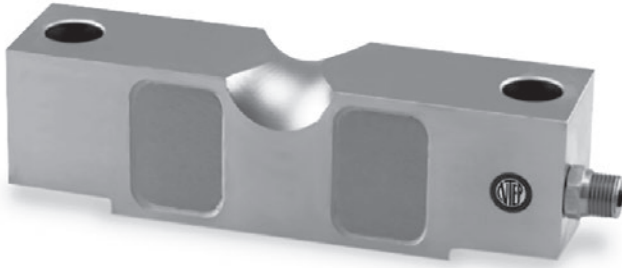
Red +Excitation
Black -Excitation
Green +Signal
White -Signal

Warranty:

One-year limited

Approvals:

cFMus



Picture is a representation of actual product

Approvals

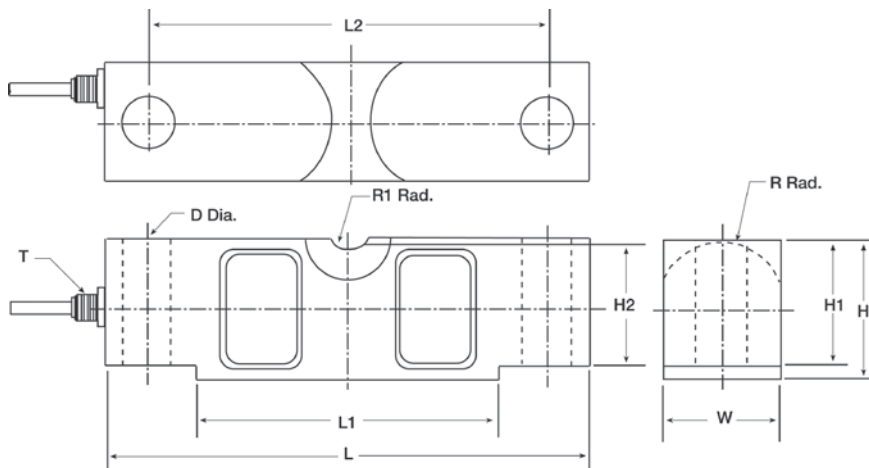


Order Information

Load Rating	Part #	Est. Weight	Price
20,000 lb	46675	8 lb	\$646.00
25,000 lb	46676	8 lb	\$662.00
40,000 lb	46677	13 lb	\$790.00
50,000 lb	46678	19 lb	\$858.00
60,000 lb	46679	19 lb	\$858.00
75,000 lb	46680	19 lb	\$858.00
125,000 lb	46682	40 lb	\$1,563.00

Dimensions

Rated Capacity	L	L1	L2	W	H	H1	H2	D	R	R1	T
lb/in											
20,000 to 25,000	7.75	4.99	6.50	1.69	1.94	1.70	1.63	0.68	0.90	0.75	1/4-18 NPT
40,000	10.25	6.39	8.50	1.94	2.44	2.10	2.00	0.81	1.12	1.00	1/4-18 NPT
50,000 to 75,000	10.25	6.39	8.50	2.44	2.94	2.65	2.54	1.06	1.37	1.00	1/2-14 NPT
125,000	15.25	8.99	12.75	2.90	3.86	2.43	3.30	1.62	1.80	1.50	1/2-14 NPT



Interchangeable Products

RICE LAKE WEIGHING SYSTEMS

RL75058I..... page 148

VPG® SENSORTRONICS

65058A..... page 305

Weigh Module Available

RICE LAKE WEIGHING SYSTEMS

MVS..... page 84

Specifications

Full Scale Output:

3.0 mV/V

Output Resistance:

700 (± 5) ohm

Input Resistance:

770 (± 10) ohm

Material/Finish:

High-alloy steel, nickel plated

Temperature:

Compensated range

14 °F to 104 °F (-10 °C to 40 °C)

Operating range

0 °F to 150 °F (-18 °C to 65 °C)

Seal Type:

Environmentally sealed, IP67

Safe Overload:

150% full scale

Safe Sideload:

100% full scale

Rated Excitation:

5 to 10 VDC (15 V maximum)

Combined Error:

0.025%

Insulation Resistance:

5,000 megohm

Cable Length:

25 ft

Cable Diameter:

20,000 to 25,000 lb: 0.200 in

40,000 to 125,000 lb: 0.305 in

Polyurethane jacket

Cable Color Code:

Red +Excitation

Black -Excitation

Green +Signal

White -Signal

Warranty:

One-year limited

Approvals:

cFMus

NTEP



Picture is a representation of actual product

Approvals

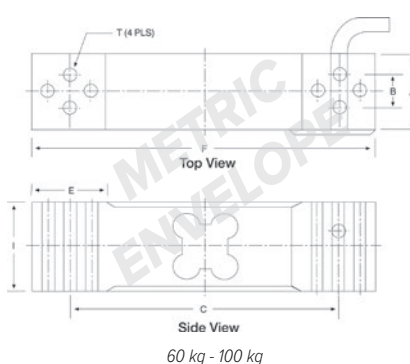
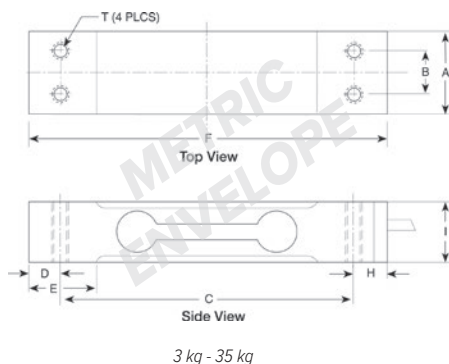


Order Information

Load Rating	Part #	Est. Weight	Price
NTEP Certified			
3 kg	41822	1 lb	\$138.00
6 kg	41823	1 lb	\$138.00
10 kg	41824	1 lb	\$138.00
15 kg	41825	1 lb	\$138.00
20 kg	41826	1 lb	\$138.00
Non-NTEP Certified			
10 kg	30145	1 lb	\$127.00
15 kg	30146	1 lb	\$127.00
20 kg	30147	1 lb	\$127.00
30 kg	46502	1 lb	\$127.00
35 kg	30148	1 lb	\$127.00
60 kg	41149	2 lb	\$127.00
100 kg	41150	2 lb	\$127.00

Dimensions

Rated Capacity	A	B	C	D	E	F	H	I	T
kg/mm									
3	15.0	7.0	58.0	6.0	12.0	70.0	6.0	22.0	M3 × 0.5
6 to 20	30.0	15.0	106.0	12.0	25.0	130.0	12.0	22.0	M6 × 1.0
30 to 35	40.0	15.0	106.0	12.0	25.0	130.0	12.0	22.0	M6 × 1.0
60 to 100	35.0	15.0	117.0	-	-	150.0	-	40.0	M6 × 1.0



Interchangeable Products

RICE LAKE WEIGHING SYSTEMS

RL1521A.....page 168

VPG® TEDEA-HUNTLEIGH

1022.....page 322

VPG® BLH

C2G1

NMB®

C2G1

Specifications

Full Scale Output:

2.0 mV/V

Output Resistance:

350 (± 3) ohm

Input Resistance:

410 (± 15) ohm

Material/Finish:

Aluminum

Temperature:

Compensated range

14 °F to 104 °F (-10 °C to 40 °C)

Operating range

0 °F to 150 °F (-18 °C to 65 °C)

Seal Type:

Environmentally sealed, IP65

Safe Overload:

150% full scale

Rated Excitation:

5 to 10 VDC (15 V maximum)

Combined Error:

0.25% full scale

Non-Repeatability:

0.02%

Insulation Resistance:

5,000 megohm

Cable Length:

3 to 35 kg: 16.5in

60 kg: 14 in

100 kg: 6.5 ft

Cable Diameter:

0.14 in PVC jacket

Cable Color Code:

Red +Excitation

Black -Excitation

Green +Signal

White -Signal

Max Platform Size:

13.75 × 13.75 in

Warranty:

One-year limited

Approvals:

cFMus

NTEP

LOC Heavy Capacity

Aluminum, Environmentally Sealed, NTEP Certified 1:5,000 Class III Single Cell, IP65

VPG CELTRON



Picture is a representation of actual product

Approvals

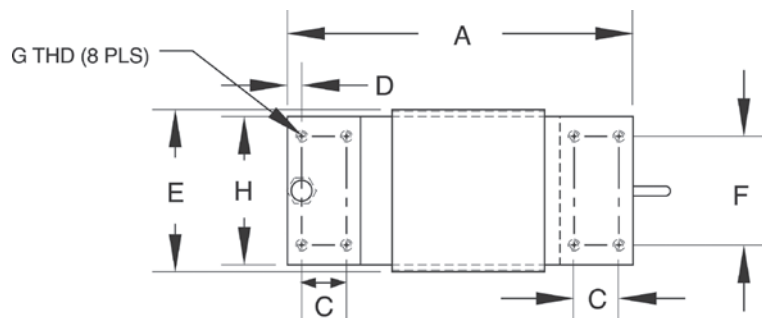


Order Information

Load Rating	Part #	Est. Weight	Price
100 kg	39797	7 lb	\$313.00
150 kg	39796	7 lb	\$313.00
250 kg	39795	7 lb	\$313.00
300 kg	39794	7 lb	\$313.00
500 kg	39793	7 lb	\$313.00

Dimensions

Rated Capacity	A	C	D	E	F	G	H
kg/mm							
100 to 500	191.0	25.0	11.0	82.0	60.0	5/16-18 UNC x 20 DP	75.0



Specifications

Full Scale Output:

2.0 mV/V

Output Resistance:

350 (± 3) ohm

Input Resistance:

410 (± 10) ohm

Material/Finish:

Aluminum

Temperature:

Compensated range

14 °F to 104 °F (-10 °C to 40 °C)

Operating range

0 °F to 150 °F (-18 °C to 65 °C)

Seal Type:

Environmentally sealed, IP65

Safe Overload:

150% full scale

Rated Excitation:

5 to 10 VDC (15 V maximum)

Combined Error:

0.025% full scale

Non-Repeatability:

0.02%

Insulation Resistance:

5,000 megohm

Cable Length:

3 m

Cable Diameter:

0.200 in PVC jacket

Cable Color Code:

Red +Excitation

Black -Excitation

Green +Signal

White -Signal

Max Platform Size:

24 x 24 in

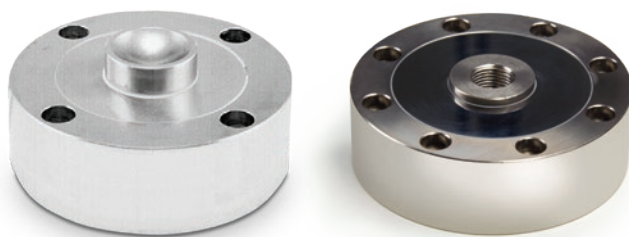
Warranty:

One-year limited

Approvals:

cFMus

NTEP



25,000 lb - 100,000 lb

5,000 lb - 10,000 lb

Picture is a representation of actual product

Approvals



Order Information

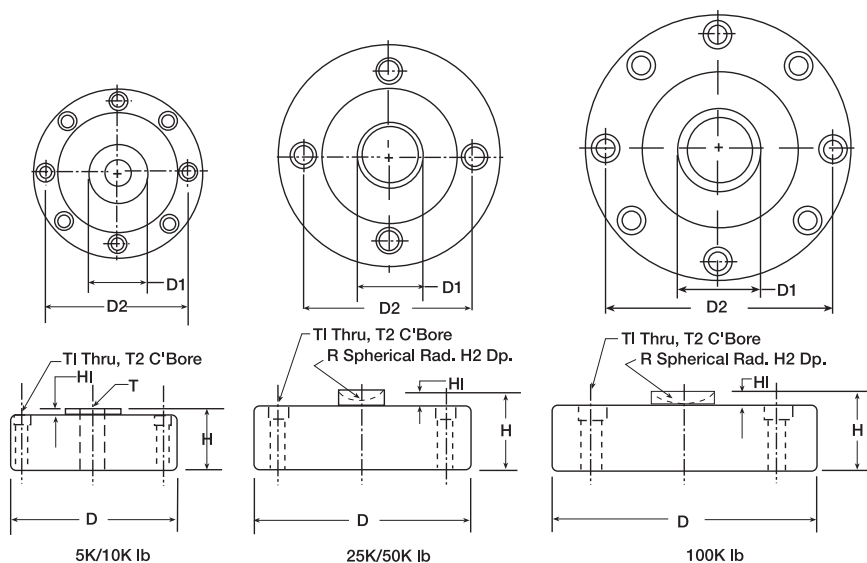
Load Rating	Part #	Est. Weight	Price
5,000 lb*	41966	6 lb	\$636.00
10,000 lb*	41967	6 lb	\$636.00
25,000 lb	41968	9 lb	\$822.00
50,000 lb	41969	9 lb	\$822.00
100,000 lb	41970	12 lb	\$975.00
Options			
Ball 1.25 in diameter	65841	1 lb	\$37.00
Load cup**	33616	1 lb	\$37.00

* 5,000 lb and 10,000 lb models can be used in compression and tension load applications

** Load cup, PN 33616, is required for compression applications on 5,000 lb and 10,000 lb capacity load cells and is sold separately

Dimensions

Rated Capacity	T	R	D	D2	H	H1	H2	T1	T2
lb/in									
5,000 to 10,000	5/8-18 UNF	—	4.12	3.50	1.37	0.12	—	0.28	0.406 × 0.283 DP
25,000 to 50,000	—	0.875	4.75	4.00	2.12	0.50	0.31	0.34	0.508 × 0.38 DP
100,000	—	0.875	5.43	4.60	2.25	0.25	0.31	0.41	0.626 × 0.4 DP



Interchangeable Products

RICE LAKE WEIGHING SYSTEMS

RL90000page 161

Specifications

Full Scale Output:

4.0 mV/V

Output Resistance:

5,000 to 50,000 lb: 350 (± 3) ohm

100,000 lb: 700 (± 5) ohm

Input Resistance:

5,000 to 50,000 lb: 385 (± 5) ohm

100,000 lb: 770 (± 70) ohm

Material/Finish:

High-alloy steel, nickel plated

Temperature:

Operating range

0 °F to 150 °F (-18 °C to 65 °C)

Seal Type:

Environmentally sealed, IP67

Safe Overload:

150% full scale

Rated Excitation:

15 VDC (15 V maximum)

Nonlinearity:

0.05% full scale

Hysteresis:

0.02% full scale

Insulation Resistance:

2,000 megohm

Cable Length:

50 ft

Cable Diameter:

5,000 to 25,000 lb: 0.200 in

50,000 to 100,000 lb: 0.305 in

Polyurethane jacket

Cable Color Code:

Red +Excitation

Black -Excitation

Green +Signal

White -Signal

Warranty:

One-year limited

Approvals:

cFMus

