

Weigh Modules

TABLE OF CONTENTS

ITCM	38	EZ Mount 1 with RL70000	72
<i>Isolated Tension Cell Modules</i>		<i>Mild Steel Weigh Modules, Rice Lake Weighing Systems</i>	
ITCM SS	39	EZ Mount 1 with RL70000SS	74
<i>Stainless Steel Isolated Tension Cell Modules</i>		<i>Stainless Steel Weigh Modules, Rice Lake Weighing Systems</i>	
ITCM HE	40	EZ Mount 1 with Painted RL70000	75
<i>Stainless Steel, Welded Seal, NTEP Certified Isolated Tension Cell Modules</i>		<i>Rice Lake Weighing Systems</i>	
RL50210TA	41	EZ Mount 1 HE	76
<i>Mini Tank Weighing Module</i>		<i>Stainless Steel Weigh Modules, Rice Lake Weighing Systems</i>	
65059	43	RL1600 Series	77
<i>Mini Tank Weighing Module, VPG Sensortronics</i>		<i>Cast Iron Weigh Modules</i>	
RL50219SS-TA	45	RL1600 Series	79
<i>Mini Tank Weighing Module, Stainless Steel</i>		<i>Mild Steel Weigh Modules</i>	
Paramounts® EP	47	RL1600 Series SS	81
<i>Environmentally Protected, Mild Steel, Light- to Medium-capacity Tank Weighing Systems</i>		<i>Stainless Steel Weigh Modules</i>	
Paramounts® HS	49	RL1600 Series	
<i>Hermetically Sealed, Mild Steel, Light- to Medium-capacity Tank Weighing Systems</i>		Painted Load Cell Version	
RLBTM	51	<i>Stainless Steel Weigh Modules</i>	
<i>Mild Steel/Stainless Steel Weigh Modules</i>		MVS Mount/MVS	
RL1800 Series	52	<i>Conversion Kit</i>	
<i>Mild Steel/Stainless Steel Weigh Modules</i>		Translink™ Parallel Link	
RL1800 Series		<i>Truck Scale Assembly, Rice Lake Weighing Systems</i>	
Painted Load Cell Version	54	Motor Truck Scale	
<i>Stainless Steel Weigh Modules</i>		Electronic Conversion Kit	
RL1900 Series	55	<i>Rice Lake Weighing Systems</i>	
<i>Stainless Steel Weigh Modules</i>		MagnaMount®	
RLTM	56	<i>Tank, Truck and Railroad Track Assembly</i>	
<i>Stainless Steel Tank Weigh Modules</i>		Mettler Toledo® DigiTOL® Retrofit Kit	
RL2200SS Series	57	<i>Stainless Steel, Rice Lake Weighing Systems/Flintec</i>	
<i>Stainless Steel, Tank, Hopper and Vessel Weighing Assembly</i>		B-TEK Digital Retrofit Kit	
RL9000TWM Series	58	<i>Stainless Steel, Rice Lake Weighing Systems</i>	
<i>Stainless Steel, Tank, Hopper and Vessel Weighing Assembly</i>		Electronic Floor Scale Underdeck Kits	
RL9000TWM-HT	61		
<i>Tank, Hopper and Vessel Weigh Module</i>			
RL2200 Series	62		
<i>Tank, Hopper and Vessel Weighing Assembly</i>			
RLC	63		
<i>Stainless Steel Weigh Modules, VPG Reverse</i>			
220 Universal Mount	64		
<i>Stainless Steel Weigh Modules, VPG Teda-Huntleigh</i>			
EZ Mount 1 with RL72020	66		
<i>Mild Steel Weigh Modules, Rice Lake Weighing Systems</i>			
EZ Mount 1 SS with RL72020SS	68		
<i>Stainless Steel Weigh Modules, Rice Lake Weighing Systems</i>			
EZ Mount 1 with Painted RL72020P	70		
<i>Rice Lake Weighing Systems</i>			

Product names, logos, brands and other trademarks featured or referred to within this publication are the property of their respective trademark holders.



Picture is a representation of actual product.

Load Cell Approvals



Module with
RL20000I S-beam load cell

Complete Kit Includes

- Three or four ITCM assemblies with RL20000I NTEP Certified S-beam load cells
- One JB4SS NEMA Type 4X stainless steel signal trim junction box
- 25 ft of hostile environment EL147HE SURVIVOR® load cell cable

Standard Features

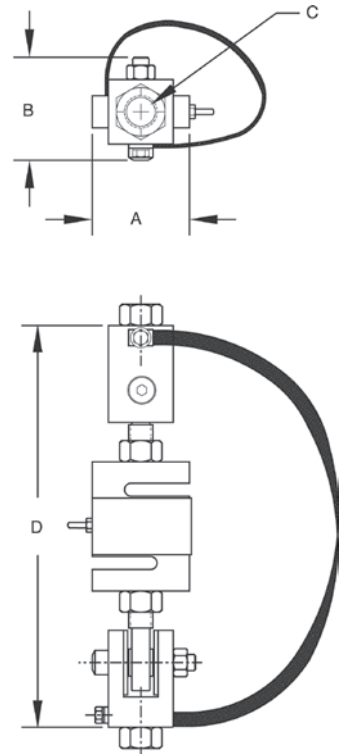
- Capacities (per module): 100 to 20,000 lb
- Clevis mounts with nylon insulating washers
- 20,000 lb ITCM rod-end ball joints
- Load cell is completely isolated from stray currents
- Grounding strap provides alternative path to ground
- Complete package for ease of installation
- Provides correct loading even in difficult installations
- Lower overall height compared to other isolated tension assemblies
- Zinc-plated clevis assemblies
- 20,000 lb capacity is not electrically isolated

Applications

- Suspended hoppers and tanks
- Mechanical scale conversions
- Use as a single module or in multiples

Load Rating Dimensions Per Module

Load Cell Capacity lb/in	A	B	C	D	Single Module	Price	3-Module Kit	Price	4-Module Kit	Price
100	2.00	1.81	3/8-16 UNC 1/2-13 UNC	7.00 (ref)	17851 17831	\$566.00 \$566.00	18003 18004	\$1,995.00 \$1,995.00	18027 18028	\$2,573.00 \$2,573.00
150	2.00	1.81	3/8-16 UNC 1/2-13 UNC	7.00 (ref)	30337 30336	\$566.00 \$566.00	30357 30358	\$1,995.00 \$1,995.00	30359 30360	\$2,573.00 \$2,573.00
200	2.00	1.81	3/8-16 UNC 1/2-13 UNC	7.00 (ref)	30335 30338	\$566.00 \$566.00	30361 30362	\$1,995.00 \$1,995.00	30363 30364	\$2,573.00 \$2,573.00
250	2.00	1.81	3/8-16 UNC 1/2-13 UNC	7.00 (ref)	17852 17832	\$566.00 \$566.00	18005 18006	\$1,995.00 \$1,995.00	18029 18030	\$2,573.00 \$2,573.00
500	2.68	2.68	1/2-13 UNC 5/8-11 UNC 3/4-10 UNC	9.50 (ref)	17853 17858 17833	\$619.00 \$619.00 \$619.00	18007 18008 18009	\$2,138.00 \$2,138.00 \$2,138.00	18031 18032 18033	\$2,762.00 \$2,762.00 \$2,762.00
750	2.68	2.68	1/2-13 UNC 5/8-11 UNC 3/4-10 UNC	9.50 (ref)	17854 17859 17834	\$619.00 \$619.00 \$619.00	18010 18011 18012	\$2,138.00 \$2,138.00 \$2,138.00	18034 18035 18036	\$2,762.00 \$2,762.00 \$2,762.00
1,000	2.68	2.68	1/2-13 UNC 5/8-11 UNC 3/4-10 UNC	9.50 (ref)	17855 17860 17835	\$619.00 \$619.00 \$619.00	18013 18014 18015	\$2,138.00 \$2,138.00 \$2,138.00	18037 18038 18039	\$2,762.00 \$2,762.00 \$2,762.00
1,500	2.68	2.68	1/2-13 UNC 5/8-11 UNC 3/4-10 UNC	9.50 (ref)	17856 17861 17836	\$619.00 \$609.00 \$609.00	18016 18017 18018	\$2,138.00 \$2,138.00 \$2,138.00	18040 18041 18042	\$2,762.00 \$2,762.00 \$2,762.00
2,000	2.68	2.68	1/2-13 UNC 5/8-11 UNC 3/4-10 UNC	9.50 (ref)	17857 17862 17837	\$609.00 \$619.00 \$619.00	18019 18020 18021	\$2,138.00 \$2,138.00 \$2,138.00	18043 18044 18045	\$2,762.00 \$2,762.00 \$2,762.00
2,500	2.68	2.68	5/8-11 UNC 3/4-10 UNC	9.50 (ref)	17863 17838	\$619.00 \$619.00	18022 18023	\$2,138.00 \$2,138.00	18046 18047	\$2,762.00 \$2,762.00
3,000	3.37	3.37	3/4-10 UNC	10.50 (ref)	30339	\$646.00	30365	\$2,229.00	30366	\$2,873.00
5,000	3.37	3.37	3/4-10 UNC 1-8 UNC	12.25 (ref)	17864 17839	\$842.00 \$842.00	18024 18025	\$2,773.00 \$2,773.00	18048 18049	\$3,657.00 \$3,657.00
10,000	3.37	3.37	1-8 UNC	12.25 (ref)	17840	\$842.00	18026	\$2,773.00	18050	\$3,657.00
15,000	4.00	4.12	1 1/4-7 UNC	18.00 (ref)	17960	\$1,756.00	30353	\$5,642.00	30354	\$7,406.00
20,000	5.00	4.12	1 1/2-6 UNC	20.00 (ref)	17961	\$2,064.00	30355	\$5,642.00	30356	\$8,630.00





Picture is a representation of actual product.

Load Cell Approvals



Module with
RL20000ST S-beam load cell

Complete Kit Includes

- Three or four ITCM assemblies with RL20000ST NTEP Certified S-beam load cells
- One JB4SS NEMA Type 4X stainless steel signal trim junction box
- 25 ft of hostile environment EL147HE SURVIVOR® load cell cable

Standard Features

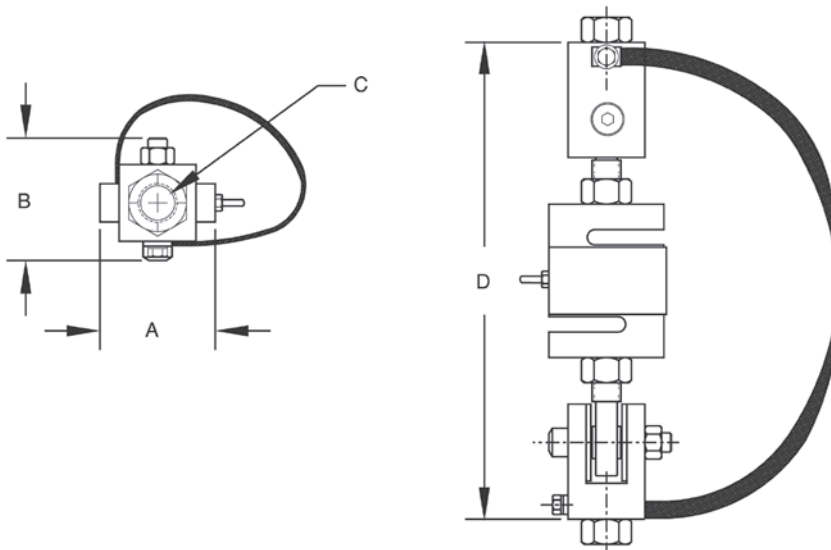
- Capacities (per module): 100 to 5,000 lb
- Clevis mounts with nylon insulating washers
- PTFE-lined rod-end ball joints
- Load cell is completely isolated from stray currents
- Grounding strap provides alternative path to ground
- Complete package for ease of installation
- Provides correct loading even in difficult installations
- Lower overall height compared to other isolated tension assemblies

Applications

- Suspended hoppers and tanks
- Mechanical scale conversions
- Use as a single module or in multiples

Load Rating Dimensions Per Module

Load Cell Capacity lb/in	A	B	C	D	Single Module	Price	3-Module Kit	Price	4-Module Kit	Price
100	2.00	1.81	3/8-16 UNC 1/2-13 UNC	7.00 (ref)	46765	\$892.00	46735	\$2,809.00	46751	\$3,598.00
250	2.00	1.81	3/8-16 UNC 1/2-13 UNC	7.00 (ref)	46766	\$892.00	46736	\$2,809.00	46752	\$3,598.00
500	2.68	2.68	1/2-13 UNC 5/8-11 UNC	9.50 (ref)	46767	\$892.00	46737	\$2,809.00	46753	\$3,598.00
750	2.68	2.68	1/2-13 UNC 5/8-11 UNC	9.50 (ref)	46768	\$892.00	46738	\$2,809.00	46754	\$3,598.00
1,000	2.68	2.68	1/2-13 UNC 5/8-11 UNC	9.50 (ref)	46769	\$892.00	46739	\$2,809.00	46755	\$3,598.00
2,500	2.68	2.68	5/8-11 UNC 3/4-10 UNC	9.50 (ref)	46770	\$892.00	46740	\$2,809.00	46756	\$3,598.00
3,000	3.37	3.37	3/4-10 UNC	10.75 (ref)	46771	\$892.00	46741	\$2,809.00	46757	\$3,598.00
5,000	3.37	3.37	3/4-10 UNC	12.00 (ref)	46772	\$892.00	46742	\$2,809.00	46758	\$3,598.00
					46773	\$892.00	46743	\$2,809.00	46759	\$3,598.00
					46774	\$892.00	46744	\$2,809.00	46760	\$3,598.00
					46775	\$892.00	46745	\$2,809.00	46761	\$3,598.00
					46776	\$892.00	46746	\$2,809.00	46762	\$3,598.00
					46777	\$962.00	46747	\$3,105.00	46763	\$3,890.00
					46778	\$1,651.00	46748	\$5,103.00	46764	\$6,608.00



ITCM HE

Stainless Steel, Welded Seal, NTEP Certified Isolated Tension Cell Modules



Picture is a representation of actual product.

Load Cell Approvals



Module with
RL20001HE S-beam load cell

Complete Kit Includes

- Three or four ITCM assemblies with RL20001HE stainless steel, welded seal
- NTEP Certified S-beam load cells
- One JB4SS NEMA Type 4X stainless steel signal trim junction box
- 25 ft of hostile environment EL147HE SURVIVOR® load cell cable

Standard Features

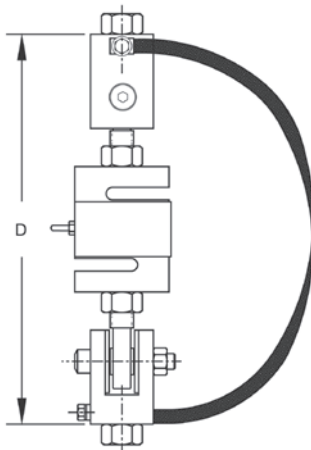
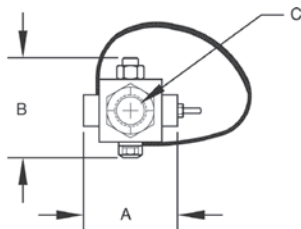
- Capacities (per module): 500 to 5,000 lb
- Clevis mounts with nylon insulating washers
- PTFE-lined rod-end ball joints
- Load cell is completely isolated from stray currents
- Grounding strap provides alternative path to ground
- Complete package for ease of installation
- Provides correct loading even in difficult installations
- Lower overall height compared to other isolated tension assemblies

Applications

- Suspended hoppers and tanks
- Mechanical scale conversions
- Use as a single module or in multiples

Load Rating Dimensions Per Module

Load Cell Capacity	A	B	C	D	Single Module	Price	3-Module Kit	Price	4-Module Kit	Price
lb/in										
500	2.68	2.68	1/2-13 UNC 5/8-11 UNC 3/4-10 UNC	9.50 (ref)	46599 46600 46601	\$1,618.00 \$1,618.00 \$1,618.00	46561 46562 46563	\$4,702.00 \$4,702.00 \$4,702.00	46580 46581 46582	\$6,269.00 \$6,269.00 \$6,269.00
750	2.68	2.68	1/2-13 UNC 5/8-11 UNC 3/4-10 UNC	9.50 (ref)	46602 46603 46604	\$1,618.00 \$1,618.00 \$1,618.00	46564 46565 46566	\$4,702.00 \$4,702.00 \$4,702.00	46583 46584 46585	\$6,269.00 \$6,269.00 \$6,269.00
1,000	2.68	2.68	1/2-13 UNC 5/8-11 UNC 3/4-10 UNC	9.50 (ref)	46605 46606 46607	\$1,618.00 \$1,618.00 \$1,618.00	46567 46568 46569	\$4,702.00 \$4,702.00 \$4,702.00	46586 46587 46588	\$6,269.00 \$6,269.00 \$6,269.00
1,500	2.68	2.68	1/2-13 UNC 5/8-11 UNC 3/4-10 UNC	9.50 (ref)	46608 46609 46610	\$1,618.00 \$1,618.00 \$1,618.00	46570 46571 46572	\$4,702.00 \$4,702.00 \$4,702.00	46589 46590 46591	\$6,269.00 \$6,269.00 \$6,269.00
2,000	2.68	2.68	1/2-13 UNC 5/8-11 UNC 3/4-10 UNC	9.50 (ref)	46611 46612 46613	\$1,618.00 \$1,618.00 \$1,618.00	46573 46574 46575	\$4,702.00 \$4,702.00 \$4,702.00	46592 46593 46594	\$6,269.00 \$6,269.00 \$6,269.00
2,500	2.68	2.68	5/8-11 UNC 3/4-10 UNC	9.50 (ref)	46614 46615	\$1,618.00 \$1,618.00	46576 46577	\$4,702.00 \$4,702.00	46595 46596	\$6,269.00 \$6,269.00
3,000	3.37	3.37	3/4-10 UNC	10.00 (ref)	46616	\$1,618.00	46578	\$4,702.00	46597	\$6,269.00
5,000	3.37	3.37	3/4-10 UNC	12.62 (ref)	46617	\$2,399.00	46579	\$7,042.00	46598	\$9,338.00



WEIGH MODULES

RL50210TA

Mini Tank Weighing Module



RL50210TA mild steel (50lb-250lb)



Picture is a representation of actual product.

Load Cell Approvals



NTEP Certified 1,000lb mild steel load cell shown.

Complete Kit Includes

- Three or four RL50210 cantilever beam load cells (50 to 250 lb mild steel)
- Three or four RL30000 single-ended beam load cells (500 lb mild steel)
- Three or four RL32018 single-ended beam load cells (1,000 to 2,500 lb mild steel)
- Three or four RL39123 single-ended beam load cells (500 lb stainless steel)
- Three or four RL32018S single-ended beam load cells (1,000 to 2,500 lb stainless steel)
- Three or four neoprene isolation/compression mounts
- One JB4SS NEMA Type 4X stainless steel signal trim junction box
- 25 ft of hostile environment EL147HE SURVIVOR® load cell cable

Standard Features

- NTEP Certified load cells
- Zinc plated mild steel or stainless steel assemblies
- Weighing ranges from 50 to 2,500 lb per module
- Neoprene isolation mounts allow for minor misalignment, thermal expansion and shock absorption
- Overload stop provides durability

Optional Features

- Stainless steel modules available in 500 lb capacities with RL39123 stainless steel load cells

Applications

- Small tanks and hoppers
- Conveyor/in-motion weighing
- Small platform scales where minor shock loading may occur

Order Information

Load Rating (Per Module)	Part #	Price
Mild Steel Single Module (Includes Load Cell)		
50 lb	17844	\$470.00
100 lb	17845	\$470.00
150 lb	17846	\$470.00
250 lb	17847	\$470.00
500 lb	17848	\$625.00
1,000 lb	17849	\$625.00
2,000 lb	17948	\$625.00
2,500 lb	17949	\$625.00
Mild Steel 3-Module Kit		
50 lb	18051	\$1,645.00
100 lb	18052	\$1,645.00
150 lb	18053	\$1,645.00
250 lb	18054	\$1,645.00
500 lb	18055	\$2,135.00
1,000 lb	18056	\$2,135.00
2,000 lb	30398	\$2,135.00
2,500 lb	30396	\$2,135.00
Mild Steel 4-Module Kit		
50 lb	18057	\$2,115.00
100 lb	18058	\$2,115.00
150 lb	18059	\$2,115.00
250 lb	18060	\$2,115.00
500 lb	18061	\$2,700.00
1,000 lb	18062	\$2,700.00
2,000 lb	30397	\$2,700.00
2,500 lb	30395	\$2,700.00

RL50210TA

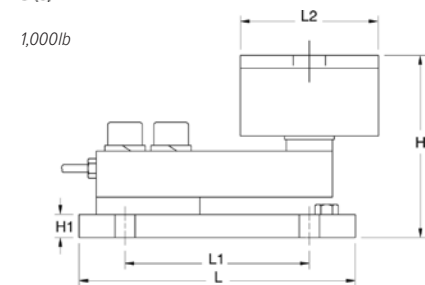
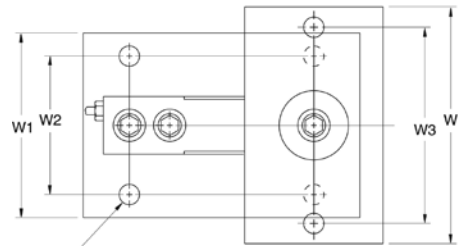
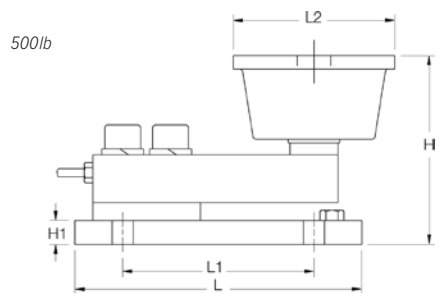
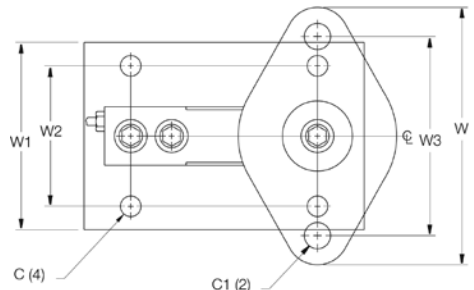
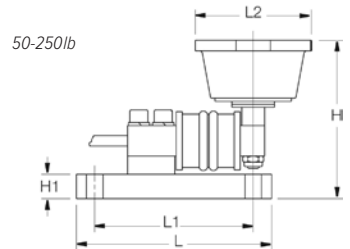
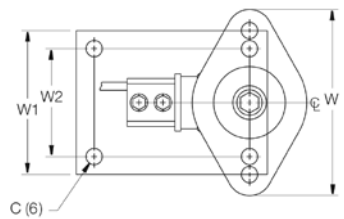
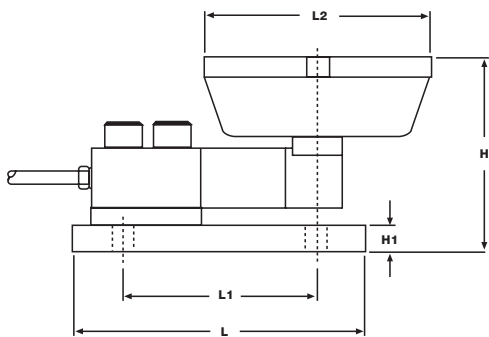
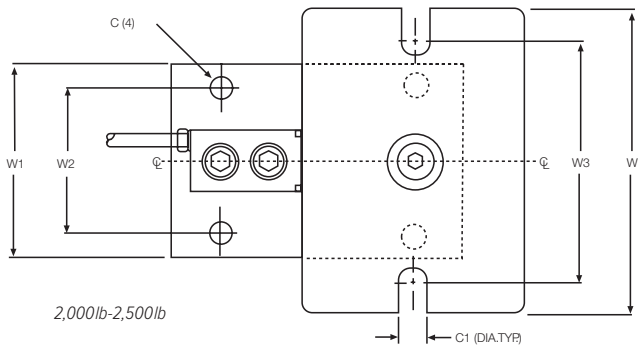
Mini Tank Weighing Module

Order Information

Load Rating (Per Module)	Part #	Price
Stainless Steel Single Module (Includes Load Cell)		
500 lb	17954	\$735.00
1,000 lb	17955	\$675.00
2,000 lb	17956	\$675.00
2,500 lb	17957	\$675.00
Stainless Steel 3-Module Kit		
500 lb	30394	\$3,435.00
1,000 lb	30404	\$2,375.00
2,000 lb	30402	\$2,375.00
2,500 lb	30400	\$2,375.00
Stainless Steel 4-Module Kit		
500 lb	30393	\$3,190.00
1,000 lb	30403	\$2,935.00
2,000 lb	30401	\$2,935.00
2,500 lb	30399	\$2,935.00

Dimensions

Rated Capacity	C	C1	H	H1	L	L1	L2	W	W1	W2	W3
lb/in											
50 to 250	0.34	-	3.13	0.50	4.00	3.25	2.38	3.88	3.00	2.25	-
500	0.44	0.56	3.88	0.50	6.00	4.00	3.38	5.50	4.00	3.00	4.13
1,000	0.44	-	4.00	0.50	6.00	4.00	3.00	5.13	4.00	3.00	4.13
2,000 to 2,500	0.44	0.56	4.00	0.50	6.00	4.00	4.62	6.25	4.00	3.00	5.00



WEIGH MODULES



Module with VPG Sensortronics 65023 single-ended shear beam load cell; capacities (per module): NTEP Certified 1,000lb load cell shown.

65059 mild steel (50lb-250lb)

Picture is a representation of actual product.

Load Cell Approvals



Order Information

Load Rating (Per Module)	Part #	Price
Mild Steel Single Module (Includes Load Cell)		
50 lb	17825	\$470.00
100 lb	17826	\$470.00
150 lb	17827	\$470.00
250 lb	17828	\$470.00
500 lb	17829	\$625.00
1,000 lb	17830	\$625.00
2,000 lb	17946	\$625.00
2,500 lb	17947	\$625.00
Mild Steel 3-Module Kit		
50 lb	18063	\$1,645.00
100 lb	18064	\$1,645.00
150 lb	18065	\$1,645.00
250 lb	18066	\$1,645.00
500 lb	18067	\$2,135.00
1,000 lb	18068	\$2,135.00
2,000 lb	30413	\$2,088.00
2,500 lb	30412	\$2,135.00
Mild Steel 4-Module Kit		
50 lb	18069	\$2,115.00
100 lb	18070	\$2,115.00
150 lb	18071	\$2,115.00
250 lb	18072	\$2,115.00
500 lb	18073	\$2,700.00
1,000 lb	18074	\$2,645.00
2,000 lb	30414	\$2,700.00
2,500 lb	30411	\$2,700.00

Complete Kit Includes

- One JB4SS NEMA Type 4X stainless steel signal trim junction box
- Three or four 60040 cantilever beam load cells (50 to 250 lb mild steel models)
- Three or four 65023-500-0107 single-ended beam load cells (500 lb mild steel models)
- Three or four 65023A1K-5107 single-ended beam load cells (1,000 to 2,500 lb mild steel models)
- Three or four 65023-500-0113 single-ended beam load cells (500 lb stainless steel model)
- Three or four 65023S1K-5113 single-ended beam load cells (1,000 to 2,500 lb stainless steel models)
- Three or four neoprene isolation/compression mounts
- 25 ft of hostile environment EL147HE SURVIVOR® load cell cable

Standard Features

- Zinc plated, mild steel modules
- Lower weighing ranges from 50 to 500 lb per module
- Environmentally protected load cells
- Neoprene isolation/compression mounts allow for minor misalignment, thermal expansion and shock absorption
- Overload stop for 500 lb modules provides durability

Applications

- Small tanks and hoppers
- Conveyor/in-motion weighing
- Small platform scales where minor shock loading may occur

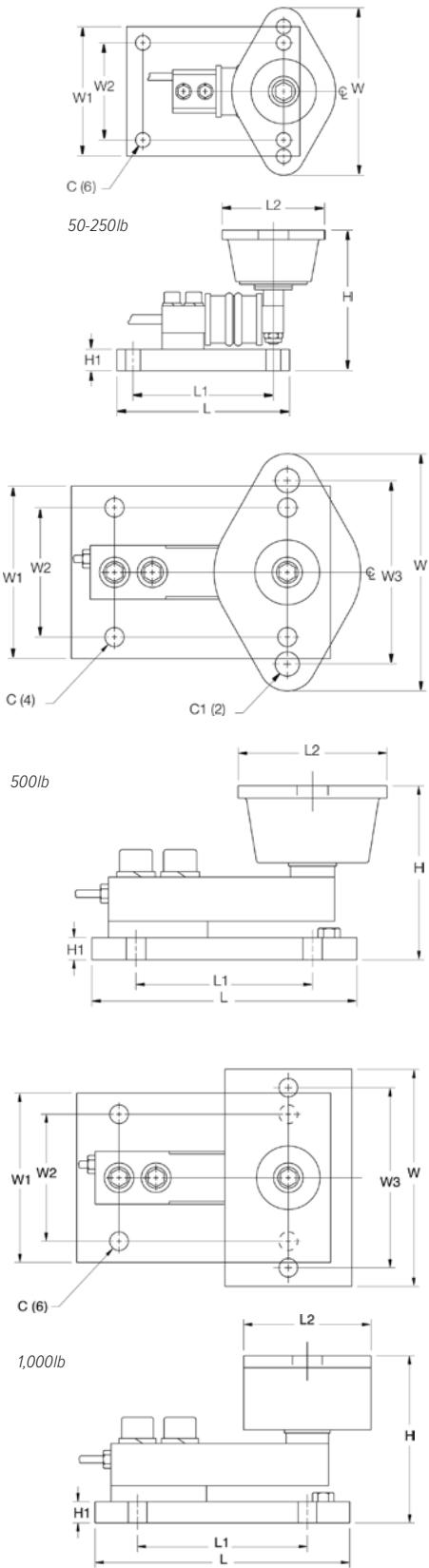
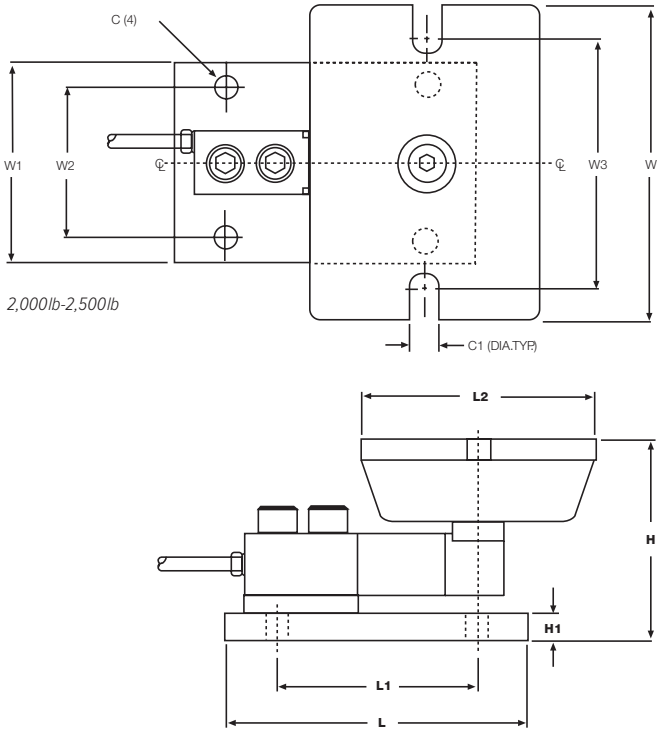
Order Information

Load Rating (Per Module)	Part #	Price
Stainless Steel Single Module (Includes Load Cell)		
500 lb	17950	\$735.00
1,000 lb	17951	\$735.00
2,000 lb	17952	\$735.00
2,500 lb	17953	\$735.00
Stainless Steel 3-Module Kit		
500 lb	30392	\$2,435.00
1,000 lb	30410	\$2,435.00
2,000 lb	30408	\$2,435.00
2,500 lb	30406	\$2,435.00
Stainless Steel 4-Module Kit		
500 lb	30391	\$3,190.00
1,000 lb	30409	\$3,190.00
2,000 lb	30407	\$3,190.00
2,500 lb	30405	\$3,190.00

Dimensions

Rated Capacity	C	C1	H	H1	L	L1	L2	W	W1	W2	W3
lb/in											
50 to 250	0.34	-	3.13	0.50	4.00	3.25	2.38	3.88	3.00	2.25	-
500	0.44	0.56	3.88	0.50	6.00	4.00	3.38	5.50	4.00	3.00	4.13
1,000	0.44	-	4.00	0.50	6.00	4.00	3.00	5.13	4.00	3.00	4.13
2,000 to 2,500	0.44	0.56	4.00	0.50	6.00	4.00	4.62	6.25	4.00	3.00	5.00

WEIGH MODULES



RL50219SS-TA

Mini Tank Weighing Module, Stainless Steel



RL50219SS-TA stainless (50lb-250lb)

Picture is a representation of actual product.

Complete Kit Includes

- One JB4SS NEMA Type 4X stainless steel signal trim junction box
- Three or four RL50219SS cantilever beam load cells (50 to 250 lb models)
- Three or four stainless steel single-ended beam load cells (500 lb models)
- Three or four neoprene isolation/compression mounts
- 25 ft of hostile environment EL147HE SURVIVOR® load cell cable

Standard Features

- Stainless steel modules
- Lower weighing ranges from 50 to 500 lb per module
- Environmentally protected load cells
- Neoprene isolation/compression mounts allow for minor misalignment, thermal expansion and shock absorption
- Overload stop for 500 lb modules provides durability

Applications

- Small tanks and hoppers
- Conveyor/in-motion weighing
- Small platform scales where minor shock loading may occur

Order Information

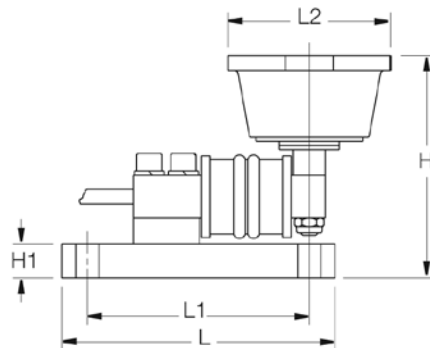
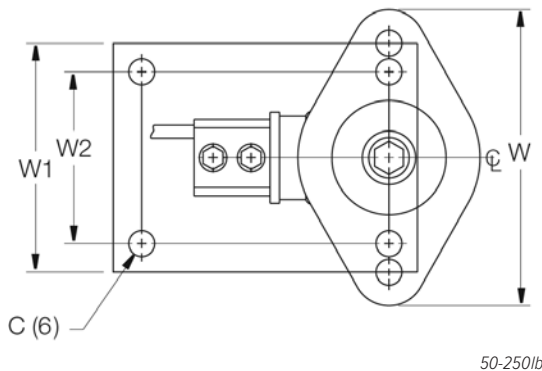
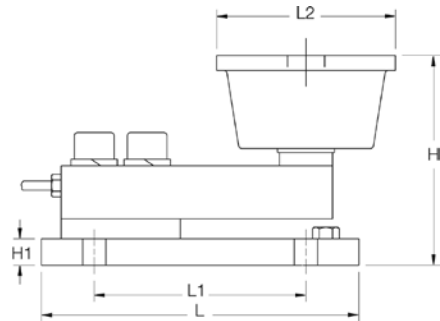
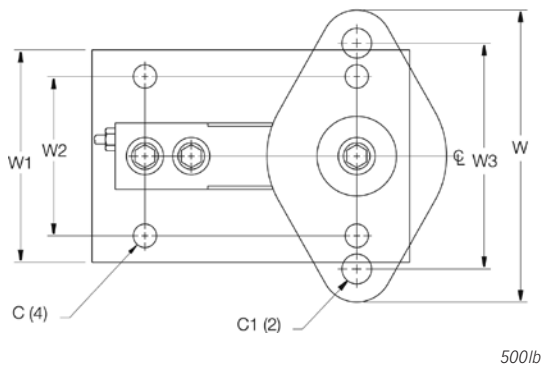
Load Rating (Per Module)	Part #	Price
Single Module (Includes Load Cell)		
50 lb	196829	\$710.00
75 lb	196830	\$710.00
100 lb	196831	\$710.00
150 lb	196832	\$710.00
250 lb	196833	\$710.00
500 lb	17954	\$735.00
3-Module Kit		
50 lb	196840	\$2,410.00
75 lb	196841	\$2,410.00
100 lb	196842	\$2,410.00
150 lb	196843	\$2,410.00
250 lb	196844	\$2,410.00
500 lb	30394	\$3,435.00
4-Module Kit		
50 lb	196845	\$3,115.00
75 lb	197015	\$3,115.00
100 lb	196846	\$3,115.00
150 lb	196848	\$3,115.00
250 lb	196849	\$3,115.00
500 lb	30393	\$3,190.00

RL50219SS-TA

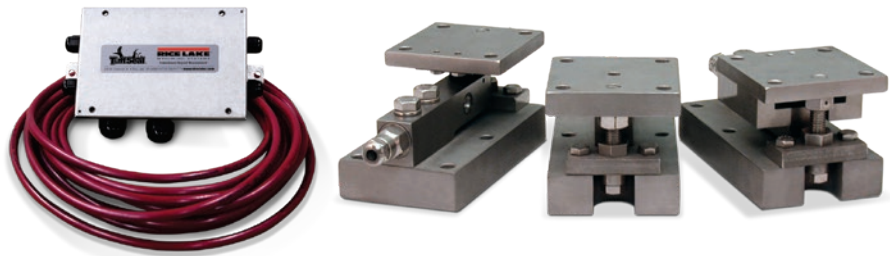
Mini Tank Weighing Module, Stainless Steel

Dimensions

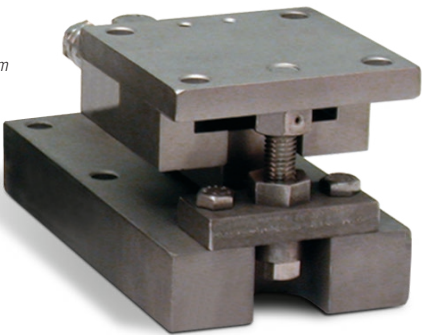
Rated Capacity	C	C1	H	H1	L	L1	L2	W	W1	W2	W3
lb/in											
50 to 250	0.34	-	3.13	0.50	4.00	3.25	2.38	3.88	3.00	2.25	-
500	0.44	0.56	3.88	0.50	6.00	4.00	3.38	5.50	4.00	3.00	4.13



WEIGH MODULES



Free-sliding module with
Flintec SB5 single-ended beam
load cell



Picture is a representation of actual product.

Load Cell Approvals



Order Information

Load Rating (Per Module)	Part #	Price
NTEP Certified 3-Module Kits		
5 kN	33683	\$2,665.00
10 kN	33682	\$2,665.00
23 kN	33681	\$2,665.00
50 kN	33680	\$3,055.00
NTEP Certified 4-Module Kits		
5 kN	33678	\$3,553.00
10 kN	33677	\$3,553.00
23 kN	33676	\$3,553.00
50 kN	33675	\$4,372.00
Non-NTEP Certified 3-Module Kit		
100 kN	33679	\$4,832.00
Non-NTEP Certified 4-Module Kit		
100 kN	33674	\$4,832.00

Complete Kit Includes

- One JB4SS NEMA Type 4X stainless steel signal trim junction box
- One fixed-pin module, one side-stop module, and one or two free-sliding assemblies. Each module is complete with a Flintec SB5 NTEP Certified 1:5000d, Class III, stainless steel environmentally protected load cell
- 25 ft of hostile environment EL147HE SURVIVOR® load cell cable

Standard Features

- Capacities (per module): 1,125 to 22,500 lb
- NTEP Certified load cells
- Unique design allows for thermal expansion/contraction
- Jacking screw allows empty vessel to be lifted clear of load cell for maintenance
- Unique blind load hole eliminates unwanted side and eccentric loads
- Vessel is free to slide laterally on PTFE-coated surfaces
- mV/V/ohm load cell outputs allow for replacement without further calibration

Applications

- Light- to medium-capacity tanks and hoppers
- Process measurement and control

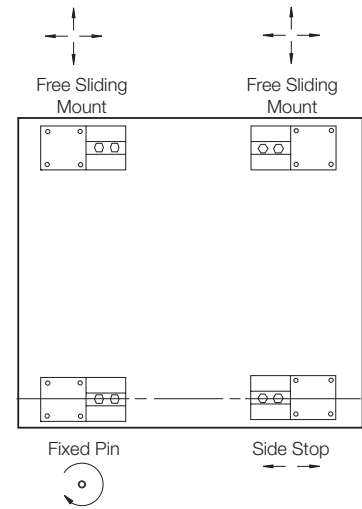
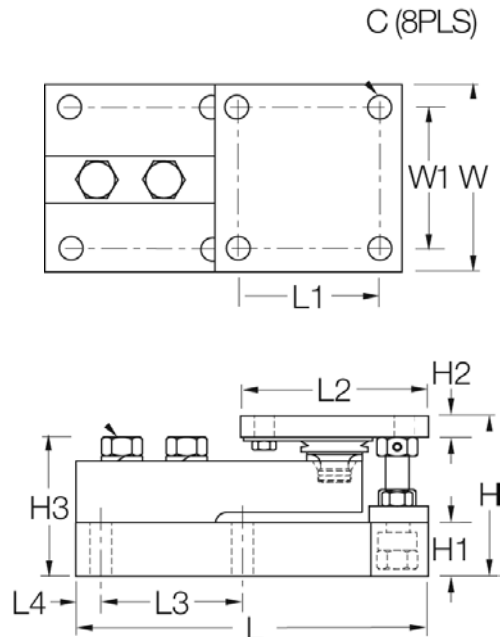
Paramounts® EP

Environmentally Protected, Mild Steel, Light- to Medium-capacity Tank Weighing Systems

Dimensions

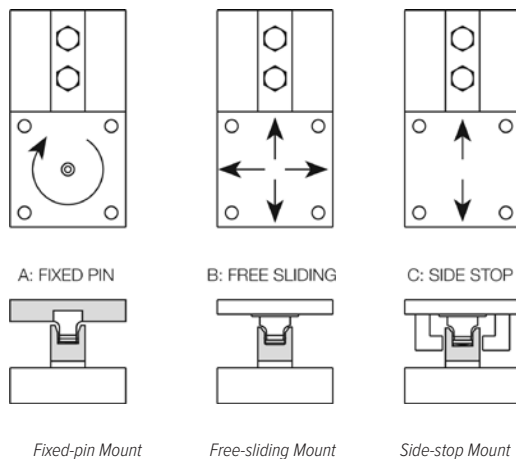
Rated Capacity	C	H	H1	*H2	**H2	H3	L	L1	L2	L3	L4	W	W1
kN/in													
5 to 23	0.44	3.58	1.25	0.50	0.75	3.06	7.51	3.00	4.00	3.00	0.50	4.00	3.00
50	0.56	4.66	1.50	0.62	1.00	4.09	9.19	3.87	5.00	3.87	0.56	5.00	3.87
100	0.69	6.41	2.00	0.75	1.25	5.73	11.46	4.75	6.00	4.75	0.69	6.00	4.75

* Side-stop and free-sliding units ** Fixed-pin units



VESSEL ARRANGEMENT

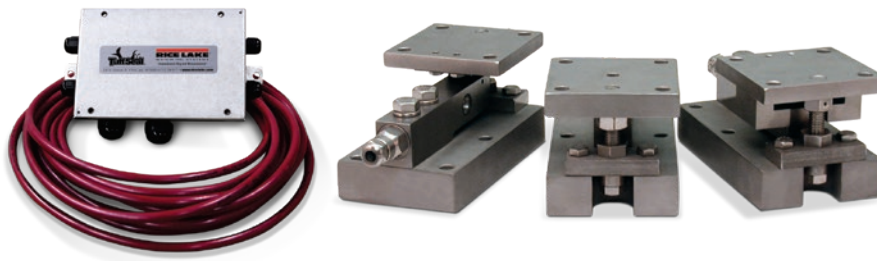
When arranged as illustrated, the vessel is fixed at one corner but is able to slide freely as indicated. This ensures there is minimal side loading on the cells and at the same time the vessel is self-checking. The unique, patented blind load hole technology used in these mounts introduces the load at the neutral axis of the load cell which helps minimize the effects of side loads.



Fixed-pin Mount

Free-sliding Mount

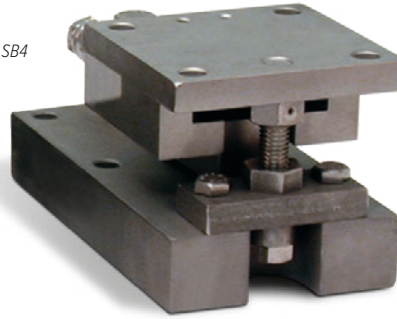
Side-stop Mount



Free-sliding module with Flintec SB4 bending beam load cell

Picture is a representation of actual product.

Load Cell Approvals



Complete Kit Includes

- One JB4SS NEMA Type 4X stainless steel signal trim junction box
- One fixed-pin module, one side-stop module, and one or two free-sliding assemblies. Each module is complete with a Flintec SB4 stainless steel hermetically sealed load cell
- 25 ft of hostile environment EL147HE SURVIVOR® load cell cable

Standard Features

- Capacities (per module): 5 kN to 100 kN
- Unique design allows for thermal expansion/contraction
- Jacking screw allows empty vessel to be lifted clear of load cell for maintenance
- Unique blind load hole eliminates unwanted side and eccentric loads
- Vessel is free to slide laterally on PTFE-coated surfaces
- Load cell outputs are matched to $\pm 0.07\%$ allowing replacement without further calibration

Optional Features

- NTEP Certified load cells available: Capacities 1,125 to 11,250 lb

Applications

- Light- to medium-capacity tanks and hoppers
- Mixers and blenders
- Process measurement and control

Order Information

Load Rating (Per Module)	Part #	Price
NTEP Certified 3-Module Kit		
5 kN	29871	\$3,370.00
10 kN	29872	\$3,370.00
23 kN	29873	\$3,370.00
50 kN	29874	\$4,000.00
NTEP Certified 4-Module Kit		
5 kN	29875	\$4,535.00
10 kN	29876	\$4,535.00
23 kN	29877	\$4,535.00
50 kN	29878	\$5,135.00
Non-NTEP Certified 3-Module Kit		
5 kN	17977	\$3,265.00
10 kN	17978	\$3,265.00
23 kN	17979	\$3,265.00
50 kN	17980	\$3,962.00
100 kN	17981	\$5,090.00
Non-NTEP Certified 4-Module Kit		
5 kN	17984	\$4,282.00
10 kN	17985	\$4,282.00
23 kN	17986	\$4,282.00
50 kN	17987	\$4,875.00
100 kN	17988	\$6,160.00
Conduit Adapter Kit (must be factory installed to maintain warranty)		
1/2-14 NPT	17703	\$50.00

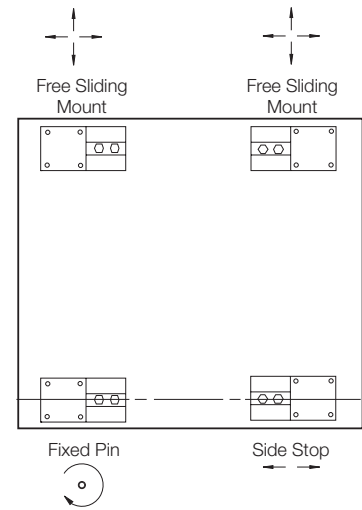
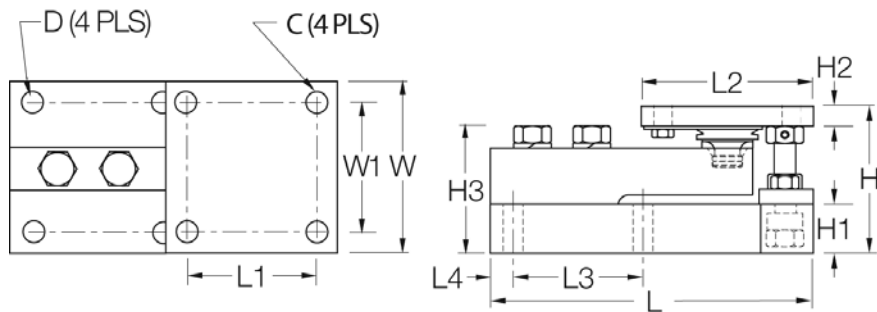
Paramounts® HS

Hermetically Sealed, Mild Steel, Light- to Medium-capacity Tank Weighing Systems

Dimensions

Rated Capacity	C	D	H	H1	*H2	**H2	H3	L	L1	L2	L3	L4	W	W1
lb/in														
5 kN to 23 kN	0.44	0.44	3.58	1.25	0.50	0.75	3.06	7.51	3.00	4.00	3.00	0.50	4.00	3.00
50 kN	0.56	0.56	4.66	1.50	0.62	1.00	4.09	9.19	3.87	5.00	3.87	0.56	5.00	3.87
100 kN	0.69	0.69	6.41	2.00	0.75	1.25	5.73	11.46	4.75	6.00	4.75	0.69	6.00	4.75

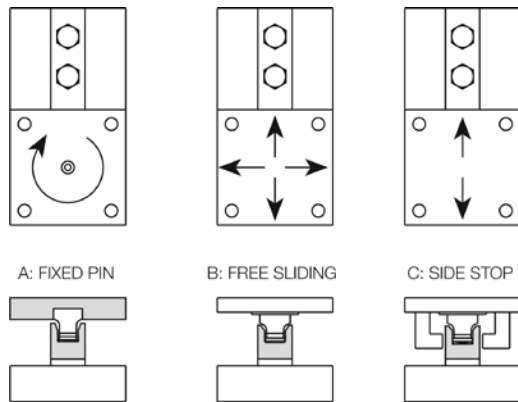
* Side-stop and free-sliding units ** Fixed-pin units



VESSEL ARRANGEMENT

When arranged as illustrated, the vessel is fixed at one corner but is able to slide freely as indicated. This ensures there is minimal side loading on the cells and at the same time the vessel is self-checking. The unique, patented blind load hole technology used in these mounts introduces the load at the neutral axis of the load cell which helps minimize the effects of side loads.

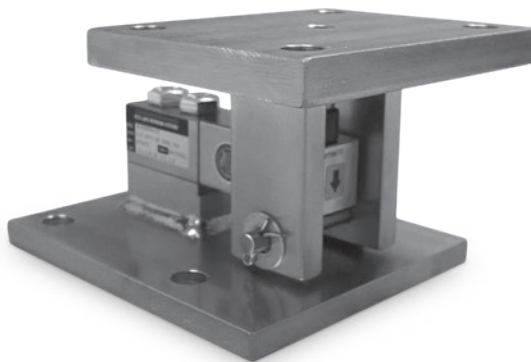
WEIGH MODULES



Fixed-pin Mount

Free-sliding Mount

Side-stop Mount



Does not include load cell.
Picture is a representation of actual product.

Standard Features

- Capacities (per module): 250 to 5,000 lb SE
- Zinc plated, mild steel construction or stainless steel construction
- Self-checking, multi-directional movement
- Design incorporates a ball and cup for self-centering
- The RLBTM will accommodate a standard shear beam 250 to 5,000 lb SE load cell that has a threaded load hole such as the RL30000, RL39123, RL35023, RL35082 and RL35083

Applications

- Light- to medium-capacity tanks and hoppers
- Conveyors

Mild Steel Order Information

Load Rating (Per Module)	Part #	Price
Single Module (Does NOT Include Load Cell)		
250 lb to 5,000 lb SE	53059	\$430.00

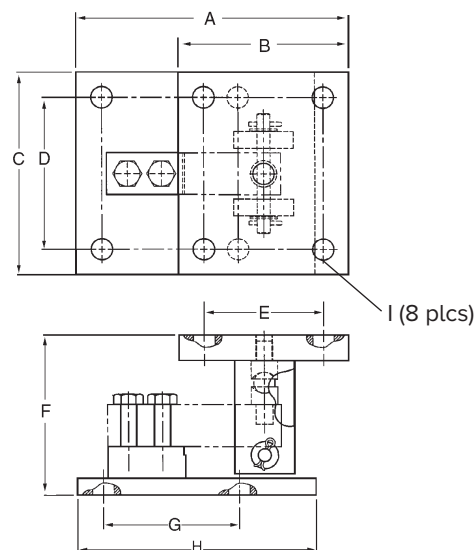
Stainless Steel Order Information

Load Rating (Per Module)	Part #	Price
Single Module (Does NOT Include Load Cell)		
250 lb to 5,000 lb SE	53066	\$655.00

Dimensions

Rated Capacity	A	B	C	D	E	F	G	H	I
lb/in									
250 to 5,000 SE*	8.00	5.00	6.00	4.50	3.50	4.75	4.00	7.00	0.63

*SE refers to small envelope



RL1800 Series

Mild Steel/Stainless Steel Weigh Modules



Module with RL32018 single-ended beam load cell

Picture is a representation of actual product.

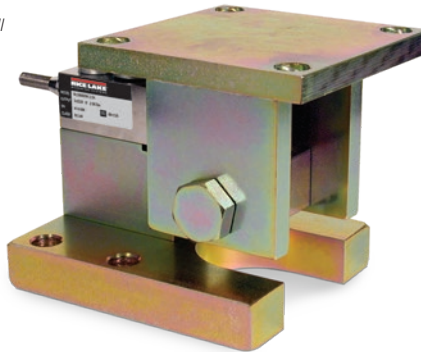
Load Cell Approvals



Except 250lb
and 500lb



APPROVED



Complete Kit Includes

- One JB4SS NEMA Type 4X stainless steel signal trim junction box
- Three or four RL1800 mild steel or stainless steel compression mounts
- Three or four RL32018 single-ended beam load cells, RL32018S used in stainless steel
- 25 ft of hostile environment EL147HE SURVIVOR® load cell cable

Standard Features

- Capacities (per module): 250 to 10,000 lb
- NTEP Certified cells in 1,000 to 10,000 lb capacities, except 3,000 lb
- Zinc plated mild steel/stainless steel construction
- Center-pivoted, tension loading design
- Self-checking, multi-directional movement
- Load is suspended on high-strength bolt instead of wire rope
- Design incorporates spherical washers for self centering
- Stainless steel kit includes RL32018S NTEP Certified load cell

Applications

- Conveyors
- Medium-capacity tanks and hoppers
- Mixers and blenders
- Process measurement and control

WEIGH MODULES

Mild Steel Order Information

Load Rating (Per Module)	Part #	Price
Single Module (Does NOT Include Load Cell)		
250 lb to 5,000 lb SE	17817	\$399.00
5,000 lb LE to 10,000 lb	17819	\$428.00
3-Module Kit		
250 lb*	18075	\$2,350.00
500 lb*	18076	\$2,350.00
1,000 lb	18077	\$2,350.00
2,000 lb	18078	\$2,350.00
2,500 lb	18079	\$2,350.00
3,000 lb	18080	\$2,350.00
4,000 lb	18081	\$2,350.00
5,000 lb SE	18082	\$2,350.00
5,000 lb LE	18083	\$2,700.00
10,000 lb	18084	\$2,700.00
4-Module Kit		
250 lb*	18085	\$3,050.00
500 lb*	18086	\$3,050.00
1,000 lb	18087	\$3,050.00
2,000 lb	18088	\$3,050.00
2,500 lb	18089	\$3,050.00
3,000 lb	18090	\$3,050.00
4,000 lb	18091	\$3,050.00
5,000 lb SE	18092	\$3,050.00
5,000 lb LE	18093	\$3,500.00
10,000 lb	18094	\$3,500.00

SE=Small envelope; LE=Large envelope

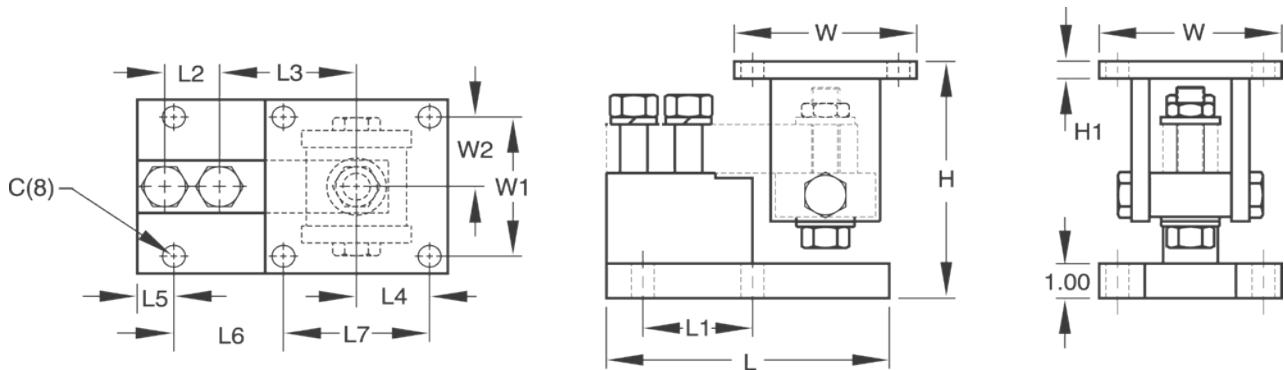
* Non-NTEP Certified using RL30000 or RL32018 load cells.

Stainless Steel Order Information

Load Rating (Per Module)	Part #	Price
Single Module (Does NOT Include Load Cell)		
250 lb to 4,000 lb	17818	\$640.00
5,000 lb to 10,000 lb	17820	\$675.00
3-Module Kit		
1,000 lb	18095	\$3,190.00
2,000 lb	18096	\$3,190.00
2,500 lb	18097	\$3,190.00
4,000 lb	18099	\$3,190.00
5,000 lb LE	18100	\$3,445.00
10,000 lb	18101	\$3,445.00
4-Module Kit		
1,000 lb	18102	\$4,250.00
2,000 lb	18103	\$4,250.00
2,500 lb	18104	\$4,250.00
4,000 lb	18106	\$4,250.00
5,000 lb LE	18107	\$4,595.00
10,000 lb	18108	\$4,595.00
Dummy Cell		
Dummy load cell 1 k to 5 k SE	22980	\$53.00

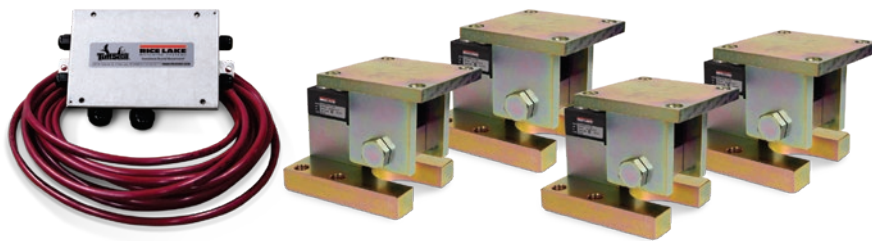
Dimensions

Rated Capacity	C	H Min/Max	H1	L	L1	L2	L3	L4	L5	L6	L7	W	W1	W2
Mild Steel Construction														
lb/in														
250 to 5,000SE	0.62	5.25/5.56	0.50	6.00	2.00	1.00	3.00	2.00	0.68	1.94	4.00	5.00	4.00	2.00
5,000LE to 10,000	0.62	6.12/6.62	0.50	7.75	3.00	1.50	3.75	2.00	1.03	2.97	4.00	5.00	4.00	2.00
Stainless Steel Construction														
lb/in														
1,000 to 4,000	0.62	5.25/5.56	0.50	6.00	2.00	1.00	3.00	2.00	0.68	1.94	4.00	5.00	4.00	2.00
5,000 to 10,000	0.62	6.12/6.62	0.50	7.75	3.00	1.50	3.75	2.00	1.03	2.97	4.00	5.00	4.00	2.00



RL1800 Series Painted Load Cell Version

Stainless Steel Weigh Modules



Module with RL35023S painted single-ended beam load cell

Picture is a representation of actual product.

Load Cell Approvals

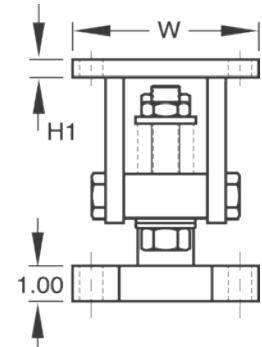
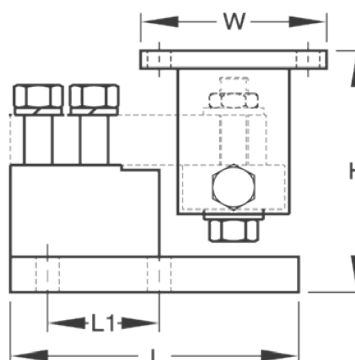
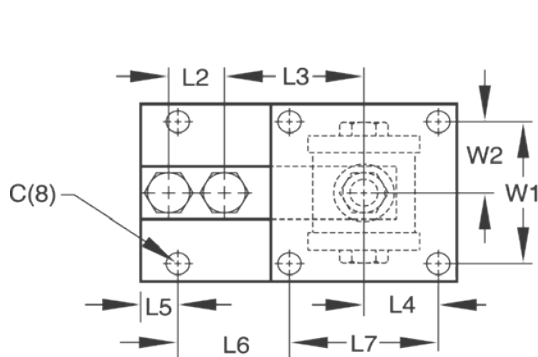


Stainless Steel Order Information

Load Rating (Per Module)	Part #	Price
Single Module (Does NOT Include Load Cell)		
1,000 lb-4,000 lb	17818	\$640.00
5,000 lb-10,000 lb	17820	\$675.00
3-Module Kit		
1,000 lb	188177	\$3,175.00
2,000 lb	188179	\$3,175.00
2,500 lb	188181	\$3,175.00
4,000 lb	188183	\$3,175.00
5,000 lb	188185	\$3,430.00
10,000 lb	188187	\$3,430.00
4-Module Kit		
1,000 lb	188178	\$4,230.00
2,000 lb	188180	\$4,230.00
2,500 lb	188182	\$4,230.00
4,000 lb	188184	\$4,230.00
5,000 lb	188186	\$4,570.00
10,000 lb	188188	\$4,570.00

Dimensions

Rated Capacity C	H Min/Max	H1	L	L1	L2	L3	L4	L5	L6	L7	W	W1	W2
lb/in													
1,000 to 4,000	0.62	5.25/5.56	0.50	6.00	2.00	1.00	3.00	2.00	0.68	1.94	4.00	5.00	4.00
5,000 to 10,000	0.62	6.12/6.62	0.50	7.75	3.00	1.50	3.75	2.00	1.03	2.97	4.00	5.00	4.00



Complete Kit Includes

- One JB4SS NEMA Type 4X stainless steel signal trim junction box
- Three or four RL1800 stainless steel compression mounts
- Three or four RL35023S painted stainless steel single-ended beam load cells
- 25 ft of hostile environment EL147HE SURVIVOR® load cell cable

Standard Features

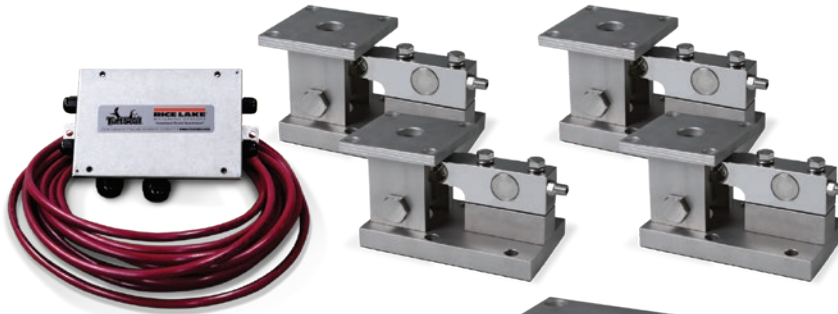
- Capacities (per module): 1,000 to 10,000 lb
- NTEP Certified cells in 1,000 to 10,000 lb capacities
- Stainless steel construction
- Center-pivoted, tension loading design
- Self-checking, multi-directional movement
- Load is suspended on high-strength bolt instead of wire rope
- Design incorporates spherical washers for self centering
- Painted load cells for corrosion protection

Applications

- Conveyors
- Medium-capacity tanks and hoppers

RL1900 Series

Stainless Steel Weigh Modules



Module with welded-seal RLSSB single-ended beam load cell

Picture is a representation of actual product.

Load Cell Approvals

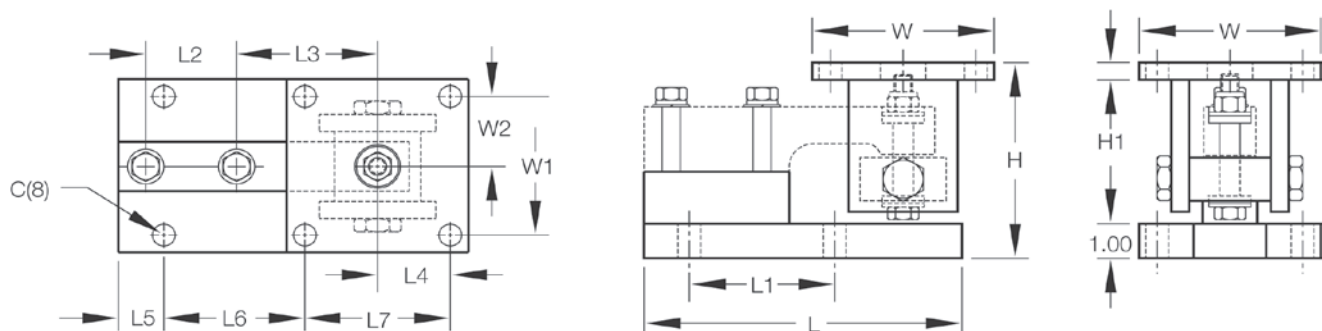


Order Information

Load Rating (Per Module)	Part #	Price
Single Module (Does NOT Include Load Cell)		
1,000 lb to 5,000 lb	17841	\$700.00
10,000 lb	17843	\$760.00
3-Module Kit		
1,000 lb	18109	\$4,285.00
2,000 lb	18110	\$4,285.00
5,000 lb	18111	\$4,285.00
10,000 lb	18112	\$4,770.00
4-Module Kit		
1,000 lb	18113	\$5,710.00
2,000 lb	18114	\$5,710.00
5,000 lb	18115	\$5,710.00
10,000 lb	18116	\$5,710.00

Dimensions

Rated Capacity C	H Min/Max	H1	L	L1	L2	L3	L4	L5	L6	L7	W	W1	W2
lb/in													
1,000 to 5,000	0.62	5.38/5.62	0.50	8.75	4.00	2.50	3.88	2.00	1.12	4.00	4.00	5.00	4.00
10,000	0.81	6.88/7.50	1.00	9.75	5.00	2.63	4.88	2.25	1.00	5.00	4.50	6.00	4.50



Complete Kit Includes

- One JB4SS NEMA Type 4X stainless steel signal trim junction box
- Three or four RL1900 stainless steel compression mounts
- Three or four RLSSB welded stainless steel single-ended beam load cells
- 25 ft of hostile environment EL147HE SURVIVOR® load cell cable

Standard Features

- NTEP Certified load cells, 1:5000d, Class III single cell
- Capacities (per module): 1,000 to 10,000lb
- 304 stainless steel construction
- Center-pivoted, tension loading design
- Welded-seal stainless steel load cells, IP67
- Self-checking, multi-directional movement
- Easy load cell replacement
- Load is suspended on high-strength bolt instead of wire rope
- Design incorporates spherical washers

Optional Features

- Also compatible with RTI SSB load cells

Applications

- Medium-capacity tanks, bins and hoppers
- Washdown applications

WEIGH MODULES

RLTM

Stainless Steel Tank Weigh Modules



Picture is a representation of actual product.

Load Cell Approvals

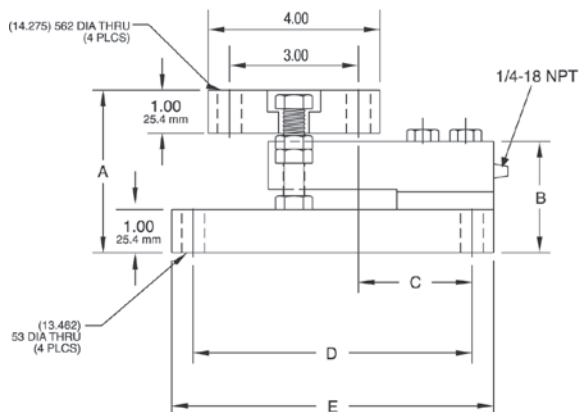


Order Information

Load Rating (Per Module)	Part #	Price
Single Module (Includes Load Cell)		
500 lb	159288	\$1,085.00
1,250 lb	159289	\$1,085.00
2,500 lb	159290	\$1,085.00
5,000 lb	159291	\$1,310.00
10,000 lb	159292	\$1,310.00
3-Module Kit		
500 lb	162942	\$3,375.00
1,250 lb	162944	\$3,375.00
2,500 lb	162945	\$3,375.00
5,000 lb	162946	\$4,180.00
10,000 lb	162947	\$4,180.00
4-Module Kit		
500 lb	162948	\$4,465.00
1250 lb	162949	\$4,465.00
2500 lb	162950	\$4,465.00
5000 lb	162951	\$5,375.00
10,000 lb	162953	\$5,375.00

Dimensions

Rated Capacity	A	B	C	D	E
lb/in					
500 to 2,500	3.77	2.59	2.62	6.50	7.50
5,000	3.99	2.83	2.62	6.50	7.50
10,000	4.27	3.08	3.88	7.50	8.50



Complete Kit Includes

- One JB4SS NEMA Type 4X stainless steel signal trim junction box
- Three or four Rice Lake RLTM stainless steel mounting assemblies
- Three or four RL32018S-T stainless steel load cells
- 25 ft of hostile environment EL147HE SURVIVOR® load cell cable

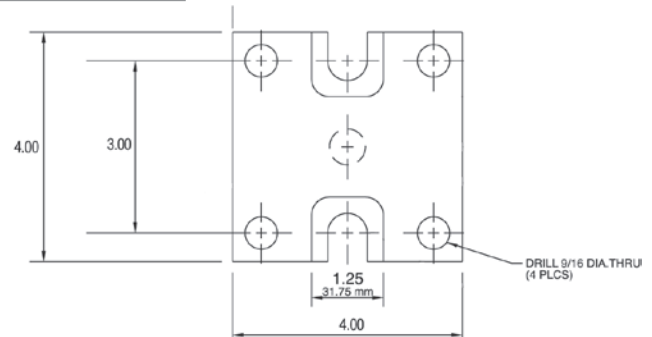
Standard Features

- Capacities: 500 to 10,000 lb
- Stainless steel
- Overload and uplift protection
- Rocker pin loading
- Welded-seal load cells
- Integral lateral stops
- 30 ft cable on load cells

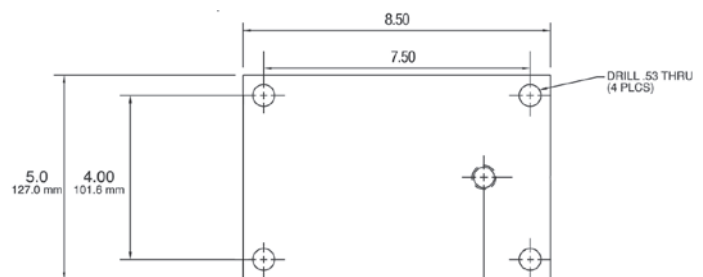
Applications

- Lower capacity tank and vessel weighing
- Process control and batching

TOP PLATE



BASE PLATE



RL2200SS Series

Stainless Steel, Tank, Hopper and Vessel Weighing Assembly



Assembly with integral RL2200SS compression disk load cell

Picture is a representation of actual product.

Order Information

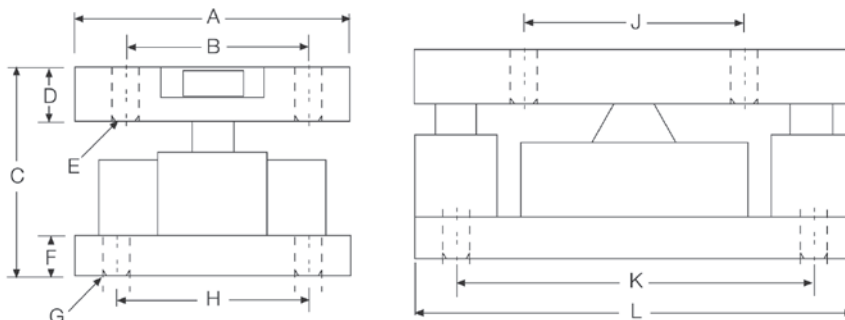
Load Rating (Per Module)	Part #	Price
Single Module		
2,500 lb	76657	\$2,765.00
5,000 lb	45845	\$2,765.00
10,000 lb	45844	\$2,765.00
25,000 lb	45843	\$4,680.00
50,000 lb	45842	\$4,680.00
3-Module Kit		
2,500 lb	76899	\$7,865.00
5,000 lb	46478	\$7,865.00
10,000 lb	46479	\$7,865.00
25,000 lb	46480	\$13,710.00
50,000 lb	46481	\$13,710.00
4-Module Kit		
2,500 lb	76900	\$10,400.00
5,000 lb	46482	\$10,400.00
10,000 lb	46483	\$10,400.00
25,000 lb	46484	\$17,890.00
50,000 lb	46485	\$17,890.00

Replacement Load Cell Order Information

Load Rating (Per Module)	Part #	Price
2,500 lb	76655	\$1,563.00
5,000 lb	45712	\$1,563.00
10,000 lb	45713	\$1,563.00
25,000 lb	45714	\$2,565.00
50,000 lb	45715	\$2,565.00

Dimensions

Rated Capacity	A	B	C	D	E	F	G	H	J	K	L
lb/in											
2,500 to 10,000	5.00	3.50	4.00	1.00	0.52	1.00	0.52	3.50	4.00	6.50	8.00
25,000 to 50,000	6.00	4.50	5.00	1.25	0.78	1.00	0.78	4.50	5.00	7.75	10.00



Complete Kit Includes

- One JB4SS NEMA Type 4X stainless steel signal trim junction box
- Three or four RL2200 stainless steel mounting assemblies
- Three or four RL2200SS stainless steel, hermetically sealed, compression disk load cells
- 25 ft of hostile environment EL147HE SURVIVOR® load cell cable

Applications

- Tank, hopper or vessel weighing
- Belt or roller conveyors
- Scale platforms and screw feeders

Specifications

Full Scale Output:

4.0 mV/V
2.0 mV/V (2,500 lb)

Bridge Resistance:

350 ohm nominal

Material/Finish:

Stainless steel

Safe Overload:

150% full scale

Rated Excitation:

5 to 10 VDC (20 V maximum)

Nonlinearity:

0.05% full scale

Hysteresis:

0.03% full scale

Temperature:

Compensated range
15 °F to 115 °F (9 °C to 46 °C)

Insulation Resistance:

5,000 megohm

Seal Type:

Hermetically sealed, IP66/68

Cable Length:

30 ft

Cable Color Code:

Red +Excitation
Black -Excitation
White +Signal
Green -Signal

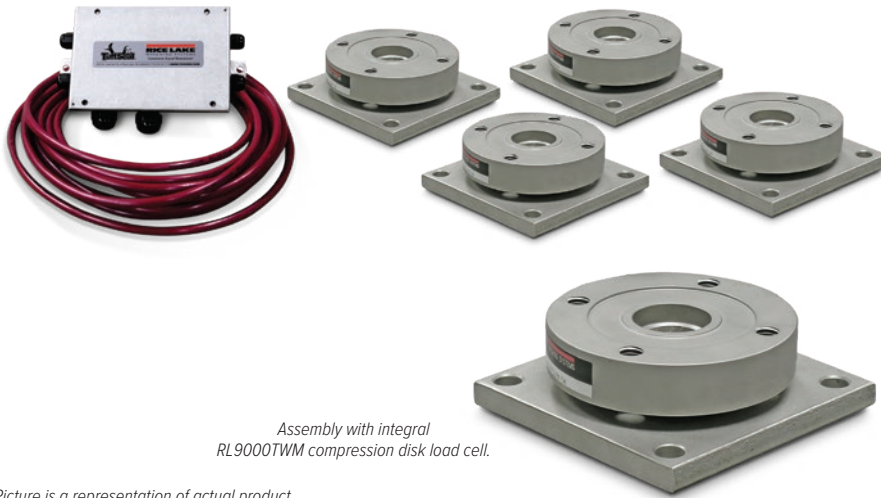
Warranty:

Two-year limited

WEIGH MODULES

RL9000TWM Series

Stainless Steel, Tank, Hopper and Vessel Weighing Assembly



Load Cell Approvals



Complete Kit Includes

- One JB4SS NEMA Type 4X stainless steel signal trim junction box
- Three or four stainless steel mounting assemblies
- 25 ft of hostile environment EL147HE SURVIVOR® load cell cable

Standard Features

- Capacities: 1,000 to 450,000lb
- Very low profile design
- 3 mV/V output
- Self-centering
- Self-checking assembly
- Offers 100% sideload, 100% uplift and 150% static safe load and 300% ultimate static overload protection
- Stainless steel construction
- Welded seal
- Weighs accurately with as much as a 3° non-parallel load
- Includes 25 ft load cell cable

Optional Features

- Stainless steel top plates (150,000 to 450,000 lb have mild steel painted base plate)

Applications

- Tank, hopper or vessel weighing

Specifications

Full Scale Output:

3 ($\pm 0.1\%$) mV/V

Bridge Resistance:

350 ohm

Material/Finish:

Stainless steel

Operating Temperature:

0 °F to 150 °F (-17 °C to 65 °C)

Seal Type:

Welded-seal, IP67

Safe Overload:

150% Full scale

Rated Excitation:

5 to 10 VDC

Insulation Resistance:

5,000 megohm

Non-linearity:

1 to 100 K: 0.05% FS

150 to 450 K: 0.1% FS

Non-repeatability:

1 to 100 K: 0.02% full scale

150 to 450 K: 0.03% full scale

Cable Length:

25 ft

Deflection at Capacity:

1 to 15 K: 0.002in

20 to 50 K: 0.004in

60 to 100 K: 0.007in

150 to 200 K: 0.007in

250 to 400 K: 0.009in

Cable Color Code:

Green +Excitation

Black -Excitation

White +Signal

Red -Signal

Warranty:

Two-year limited

RL9000TWM Series

Stainless Steel, Tank, Hopper and Vessel Weighing Assembly

Order information

Load Rating (Per Module)	Part #	Price
Single Module		
1,000 lb	84353	\$710.00
2,500 lb	84354	\$710.00
5,000 lb	84355	\$710.00
10,000 lb	84356	\$710.00
15,000 lb	84357	\$710.00
20,000 lb	84358	\$1,350.00
25,000 lb	84359	\$1,350.00
35,000 lb	84360	\$1,350.00
50,000 lb	84361	\$1,350.00
60,000 lb	84362	\$2,255.00
75,000 lb	84363	\$2,255.00
100,000 lb	84364	\$2,255.00
150,000 lb	84365	\$4,600.00
200,000 lb	84366	\$4,600.00
250,000 lb	84368	\$6,750.00
300,000 lb	84369	\$6,750.00
400,000 lb	84370	\$6,750.00
450,000 lb	84371	\$6,750.00
3-Module Kit		
1,000 lb	98974	\$2,355.00
2,500 lb	98980	\$2,355.00
5,000 lb	98981	\$2,355.00
10,000 lb	98982	\$2,355.00
15,000 lb	98983	\$2,355.00
20,000 lb	98984	\$4,275.00
25,000 lb	98985	\$4,275.00
35,000 lb	98986	\$4,275.00
50,000 lb	98987	\$4,275.00
60,000 lb	98988	\$6,930.00
75,000 lb	98989	\$6,930.00
100,000 lb	98990	\$6,930.00
150,000 lb	98991	\$13,935.00
200,000 lb	98992	\$13,935.00
250,000 lb	98993	\$20,415.00
300,000 lb	98994	\$20,415.00
400,000 lb	98995	\$20,415.00
450,000 lb	98996	\$20,415.00
4-Module Kit		
1,000 lb	98997	\$2,970.00
2,500 lb	98998	\$2,970.00
5,000 lb	98999	\$2,970.00
10,000 lb	99000	\$2,970.00
15,000 lb	99001	\$2,970.00
20,000 lb	99002	\$5,530.00
25,000 lb	99003	\$5,530.00
35,000 lb	99004	\$5,530.00
50,000 lb	99005	\$5,530.00
60,000 lb	99006	\$9,110.00
75,000 lb	99007	\$9,110.00
100,000 lb	99008	\$9,110.00
150,000 lb	99009	\$18,435.00
200,000 lb	99010	\$18,435.00
250,000 lb	99011	\$27,050.00
300,000 lb	99012	\$27,050.00
400,000 lb	99013	\$27,050.00
450,000 lb	99014	\$27,050.00

Load Rating (Per Module)	Part #	Price
Top Plates (Stainless Steel) with bolts		
1,000 to 15,000 lb	91207	\$125.00
20,000 to 50,000 lb	91210	\$285.00
60,000 to 100,000 lb	91211	\$465.00
150,000 to 200,000 lb	91213	\$740.00
250,000 to 450,000 lb	91215	\$1,710.00
Top Plates (Mild Steel) with bolts		
1,000 to 15,000 lb	124758	\$60.00
20,000 to 50,000 lb	125141	\$115.00
60,000 to 100,000 lb	124759	\$165.00
150,000 to 200,000 lb	124760	\$262.00
250,000 to 450,000 lb	124761	\$388.00
Dummy Weigh Modules (non-functioning)		
1,000 to 10,000 lb	158749	\$100.00
15,000 lb	158750	\$130.00
20,000 to 50,000 lb	158752	\$145.00
60,000 to 100,000 lb	158753	\$160.00
150,000 to 200,000 lb	158754	\$410.00
250,000 to 450,000 lb	158755	\$435.00

150,000 to 450,000 lb have mild steel painted base plates

Order information

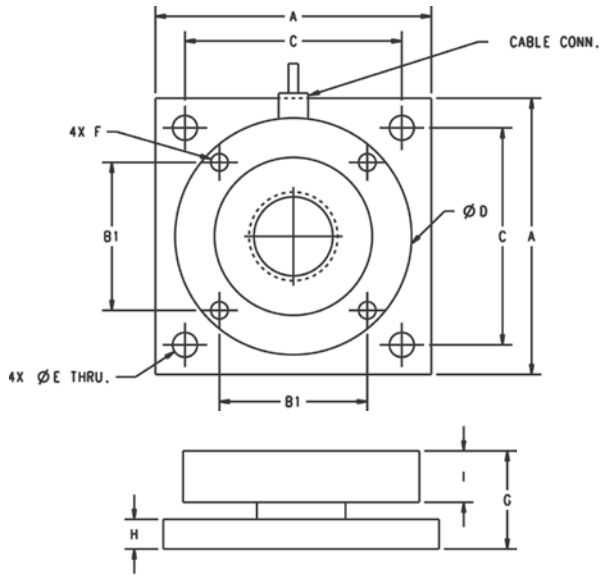
Capacity	Thickness	Material	Part #	Price
Shims				
1,000 to 15,000 lb	0.0625	SST	167001	\$6.00
1,000 to 15,000 lb	0.125	SST	167002	\$8.00
1,000 to 15,000 lb	0.250	SST	167003	\$11.00
1,000 to 15,000 lb	0.0625	MS	167004	\$2.50
1,000 to 15,000 lb	0.125	MS	167005	\$2.75
1,000 to 15,000 lb	0.250	MS	167006	\$3.25
20,000 lb to 50,000 lb	0.0625	SST	167008	\$15.00
20,000 lb to 50,000 lb	0.125	SST	167009	\$22.00
20,000 lb to 50,000 lb	0.250	SST	167010	\$34.00
20,000 lb to 50,000 lb	0.0625	MS	167011	\$9.00
20,000 lb to 50,000 lb	0.125	MS	167012	\$9.00
20,000 lb to 50,000 lb	0.250	MS	167013	\$10.00
60,000 lb to 100,000 lb	0.0625	SST	167014	\$24.00
60,000 lb to 100,000 lb	0.125	SST	167015	\$34.00
60,000 lb to 100,000 lb	0.250	SST	167016	\$53.00
150,000 lb to 200,000 lb	0.0625	SST	167020	\$32.00
150,000 lb to 200,000 lb	0.125	SST	167021	\$40.00
150,000 lb to 200,000 lb	0.250	SST	167022	\$65.00
250,000 lb to 450,000 lb	0.0625	SST	167026	\$40.00
250,000 lb to 450,000 lb	0.125	SST	167027	\$58.00
250,000 lb to 450,000 lb	0.250	SST	167028	\$75.00

Shims match dimensions of base plate and optional top plate

WEIGH MODULES

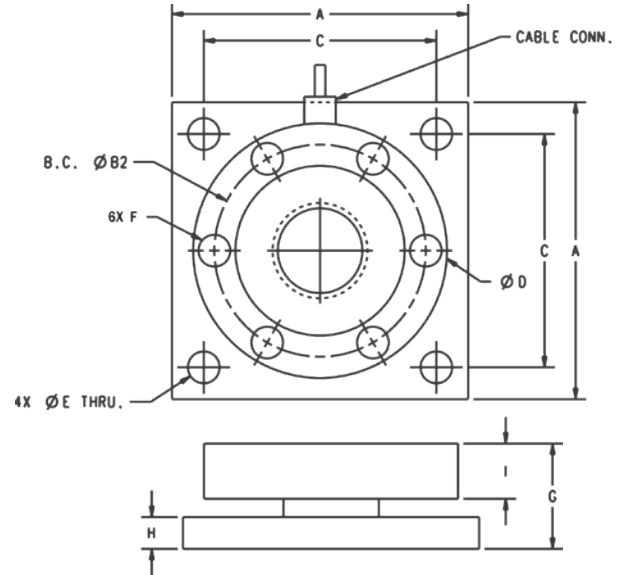
RL9000TWM Series

Stainless Steel, Tank, Hopper and Vessel Weighing Assembly



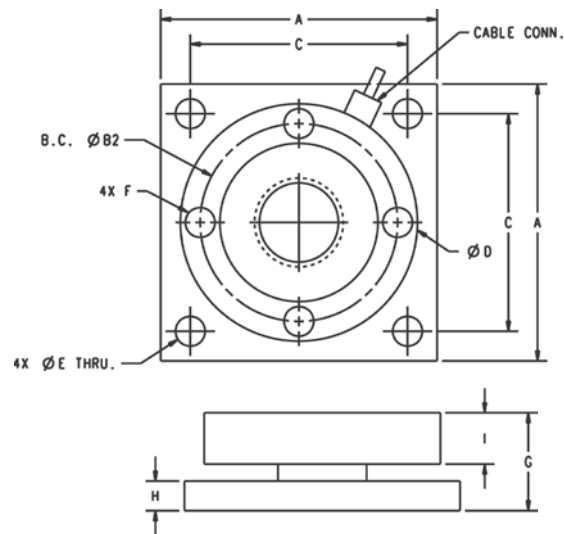
Dimensions

Rated Capacity	A	B1	C	D	E	F	G	H	I	Conduit Adapter
lb/in										
1,000 to 10,000	4.00	2.00	3.25	3.50	0.40	3/8-16 UNC	1.35	0.375	0.75	-
15,000	4.00	2.00	3.25	3.50	0.40	3/8-16 UNC	1.60	0.625	0.75	-
20,000 to 50,000	7.00	3.75	5.50	6.00	0.63	1/2-13 UNC	2.48	0.75	1.30	1/2-14 NPT
60,000 to 100,000	8.00	4.25	6.50	7.00	0.81	3/4-16 UNC	2.50	1.00	1.30	1/2-14 NPT



Dimensions

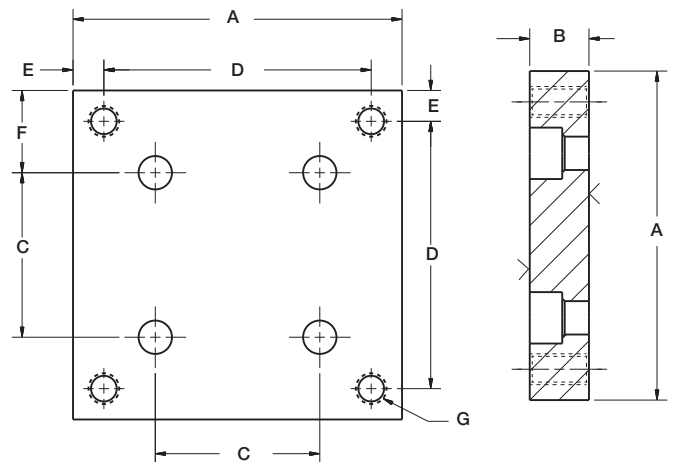
Rated Capacity	A	B2	C	D	E	F	G	H	I	Conduit Adapter
lb/in										
250,000 to 450,000	11.00	7.75	9.00	9.00	1.30	7/8-14 UNF	6.42	3.00	2.25	1/2-14 NPT



Dimensions

Rated Capacity	A	B2	C	D	E	F	G	H	I	Conduit Adapter
lb/in										
150,000 to 200,000	10.0	7.825	8.00	9.00	1.10	1-14 UNF	4.75	2.00	1.70	1/2-14 NPT

Optional Top Plates

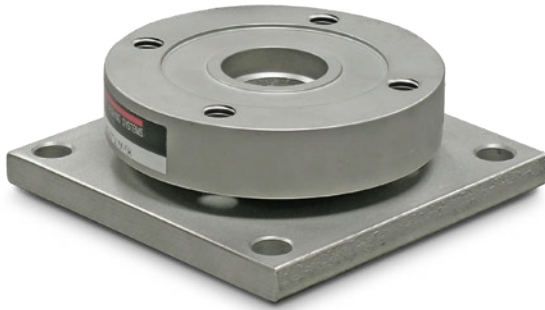


Dimensions

Rated Capacity	A	B	C	D	E	F	G
lb/in							
1,000 to 15,000	4.00	0.72	2.00	3.25	0.38	1.00	3/8-16 UNC
20,000 to 50,000	7.00	0.97	3.75	5.50	0.75	1.62	5/8-11 UNC
60,000 to 100,000	8.00	1.46	4.25	6.50	0.75	1.88	3/4-16 UNF
150,000 to 200,000	10.00	1.94	5.53	8.00	1.00	2.25	1-14 UNS
250,000 to 450,000	11.00	2.94	7.75 B.C.	9.00	1.00	1.00	1-1/4-12 UNF

RL9000TWM-HT

Tank, Hopper and Vessel Weigh Module



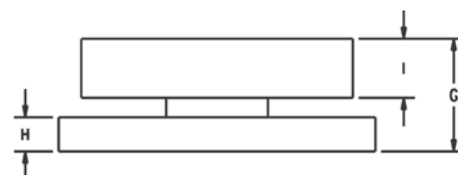
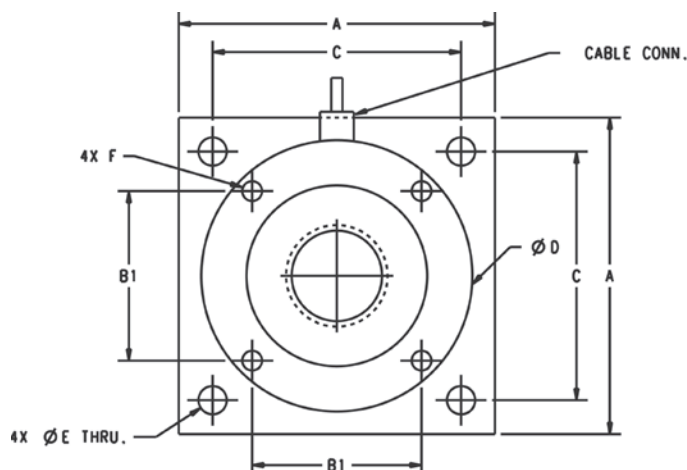
Picture is a representation of actual product.

Order Information

Load Rating (per module)	Part #	Price
Single Module		
1,000 lb	117050	\$1,285.00
2,500 lb	117051	\$1,285.00
5,000 lb	117052	\$1,285.00
10,000 lb	117140	\$1,285.00
15,000 lb	117053	\$1,285.00
20,000 lb	117054	\$2,045.00
25,000 lb	117055	\$2,045.00
35,000 lb	117056	\$2,045.00
50,000 lb	117057	\$2,045.00
Top Plates (Stainless Steel) with bolts		
1,000 lb to 15,000 lb	91207	\$125.00
20,000 lb to 50,000 lb	91210	\$285.00
Top Plates (Mild Steel) with bolts		
1,000 to 15,000 lb	124758	\$60.00
20,000 to 50,000 lb	125141	\$115.00

Dimensions

Rated Capacity	A	B1	C	D	E	F	G	H	I	Conduit Adapter
lb/in										
1,000 to 10,000	4.00	2.00	3.25	3.50	0.40	3/8-16 UNC	1.35	0.375	0.75	-
15,000	4.00	2.00	3.25	3.50	0.40	3/8-16 UNC	1.60	0.625	0.75	-
20,000 to 50,000	7.00	3.75	5.50	6.00	0.63	1/2-13 UNC	2.48	0.750	1.30	1/2-14NPT



Standard Features

- Capacities: 1,000 to 50,000 lb
- Very low profile design
- 3 mV/V output
- Self-centering
- Self-checking assembly
- Offers 100% side load, 100% uplift, 150% safe load and 300% ultimate overload protection
- Stainless steel construction
- Welded seal
- Weighs accurately with as much as a 3° non-parallel load
- Integral 25 ft PTFE cable

Optional Features

- Stainless steel top plates
- Higher capacities available upon request

Applications

- Tank, hopper or vessel weighing
- High temperature applications

Specifications

Full Scale Output:

3 (± 0.1%) mV/V

Bridge Resistance:

700 ohm

Material/Finish:

Stainless steel

Safe Overload:

150% Full scale

Non-linearity:

0.05% full scale

Non-repeatability:

0.02% full scale

Operating Temperature:

0 °F to 400 °F

Insulation Resistance:

5,000 megohm

Seal Type:

Welded seal, IP67

Deflection at Capacity:

1 to 15 K: 0.002 in
20 to 50 K: 0.004 in

Cable Length:

25 ft PTFE Jacket

Cable Color Code:

Green +Excitation
Black -Excitation
White +Signal
Red -Signal

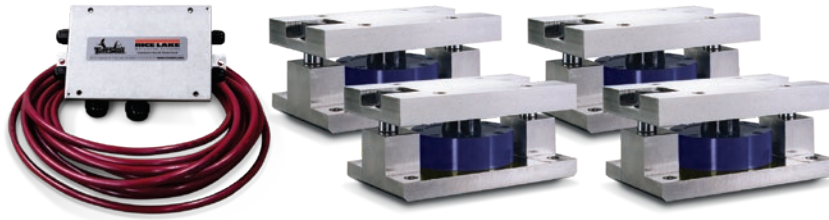
Warranty:

Two-year limited

WEIGH MODULES

RL2200 Series

Tank, Hopper and Vessel Weighing Assembly



Assembly with integral
RL2200 compression disk
load cell

Picture is a representation of actual product.

Order Information

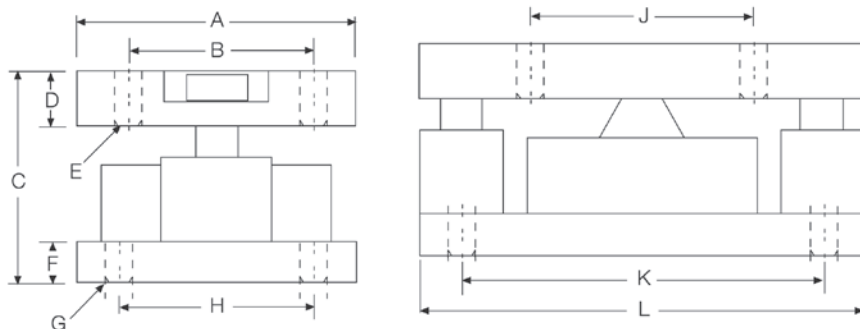
Load Rating (Per Module)	Part #	Price
Single Module		
2,500 lb	76656	\$1,965.00
5,000 lb	45849	\$1,965.00
10,000 lb	45848	\$1,965.00
25,000 lb	45847	\$2,650.00
50,000 lb	45846	\$2,650.00
3-Module Kit		
2,500 lb	76897	\$5,875.00
5,000 lb	42811	\$5,875.00
10,000 lb	42812	\$5,875.00
25,000 lb	42813	\$7,580.00
50,000 lb	42814	\$7,580.00
4-Module Kit		
2,500 lb	76898	\$7,770.00
5,000 lb	42815	\$7,770.00
10,000 lb	42816	\$7,770.00
25,000 lb	42817	\$8,995.00
50,000 lb	42818	\$8,995.00

Replacement Load Cell Order Information

Load Rating (Per Module)	Part #	Price
2,500 lb	76654	\$1,325.00
5,000 lb	45708	\$1,325.00
10,000 lb	45709	\$1,325.00
25,000 lb	45710	\$1,669.00
50,000 lb	45711	\$1,669.00

Dimensions

Rated Capacity	A	B	C	D	E	F	G	H	J	K	L
lb/in											
2,500 to 10,000	5.00	3.50	4.00	1.00	0.52	1.0	0.52	3.50	4.00	6.50	8.00
25,000 to 50,000	6.00	4.50	5.00	1.25	0.78	1.0	0.78	4.50	5.00	7.75	10.0



Complete Kit Includes

- One JB4SS NEMA Type 4X stainless steel signal trim junction box
- Three or four RL2200 high-alloy, zinc-plated steel mounting assemblies
- Three or four RL2200 compression disk load cells
- 25 ft of hostile environment EL147HE SURVIVOR® load cell cable

Standard Features

- Capacities: 2,500 to 50,000 lb
- Low-profile design
- High 4 mV/V output (2 mV/V, 2,500 lb)
- Self-centering in all directions, able to withstand excessive side loads
- Self-checking assembly

Applications

- Tank, hopper or vessel weighing
- Belt or roller conveyors
- Scale platforms and screw feeders

Specifications

Full Scale Output:

4.0 mV/V
2.0 mV/V (2,500 lb)

Bridge Resistance:

350 ohm nominal

Material/Finish:

High-alloy steel, painted

Safe Overload:

150% full scale

Rated Excitation:

5 to 10 VDC (20 V maximum)

Nonlinearity:

0.05% full scale

Hysteresis:

0.03% full scale

Temperature:

Compensated range
15 °F to 115 °F (-9 °C to 46 °C)

Insulation Resistance:

5,000 megohm

Seal Type:

Environmentally sealed

Cable Length:

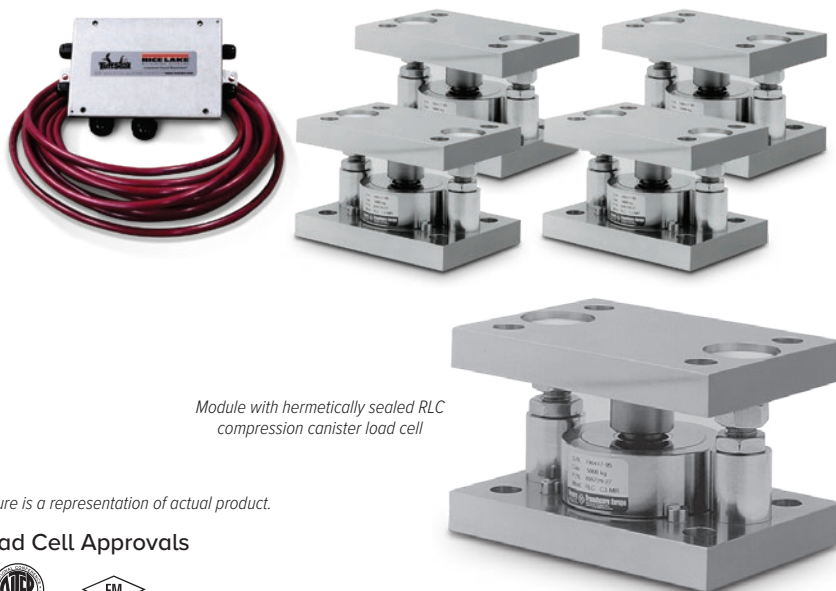
30 ft

Cable Color Code:

Red +Excitation
Black -Excitation
White +Signal
Green -Signal

Warranty:

Two-year limited



Module with hermetically sealed RLC compression canister load cell

Picture is a representation of actual product.

Load Cell Approvals



Order Information

Load Rating (Per Module)	Part #	Price
Single Module (Includes Load Cell)		
0.5t	36401	\$1,198.00
1t	36402	\$1,198.00
2t	36403	\$1,383.00
3.5t	36404	\$1,383.00
5t	36405	\$1,383.00
3-Module Kit		
0.5t	36406	\$3,885.00
1t	36407	\$3,885.00
2t	36408	\$4,065.00
3.5t	36409	\$4,065.00
5t	36410	\$4,065.00
4-Module Kit		
0.5t	36411	\$5,083.00
1t	36412	\$5,083.00
2t	36413	\$5,422.00
3.5t	36414	\$5,422.00
5t	36415	\$5,422.00

Replacement Rocker Pin Set*

Load Rating (Per Module)	Part #	Price
250 kg to 1 t	170875	\$132.00
2 t to 5 t	170876	\$132.00

*Kit includes upper cup, rocker pin and grease

Dimensions

Rated Capacity	H	H1	H2	L	L1	L2	T	W	W1	W2
ton/mm										
0.5 to 1	80.0	20.0	15.0	150.0	15.0	120.0	14.0 (top plate)	100.0	70.0	15.0
2 to 5	100.0	20.0	20.0	160.0	20.0	120.0	13.8 (bottom plate)	110.0	70.0	20.0

Complete Kit Includes

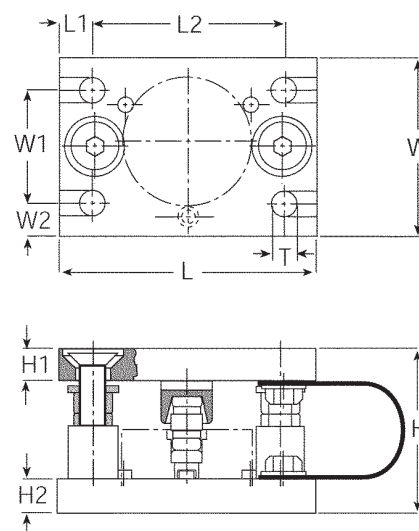
- One JB4SS NEMA Type 4X stainless steel signal trim junction box
- Three or four RLC stainless steel compression mounts
- Three or four RLC stainless steel hermetically sealed compression disk load cells
- 25 ft of hostile environment EL147HE SURVIVOR® load cell cable

Standard Features

- Capacities (per module): 0.5 to 5 t
- Matched output load cells eliminate trimming
- 304 stainless steel construction
- Rocker pin design allows movement in all directions
- Hermetically sealed, IP66/68 stainless steel load cells
- Easy load cell replacement
- Integral jacking/shipping bolts

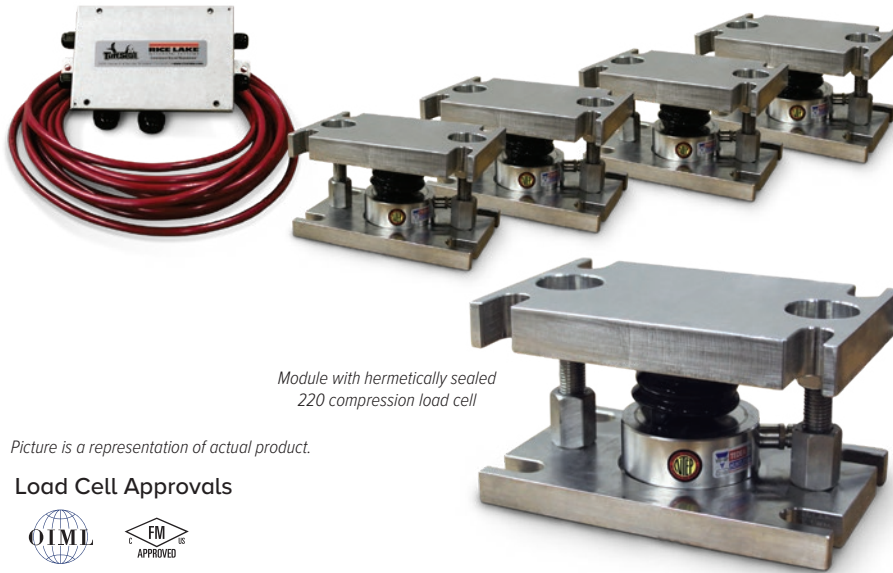
Applications

- Medium-capacity tanks, bins and hoppers
- Washdown applications
- Process control and batch weighing



220 Universal Mount

Stainless Steel Weigh Modules, VPG Tedeo-Huntleigh



Module with hermetically sealed 220 compression load cell

Picture is a representation of actual product.

Load Cell Approvals



Order Information

Load Rating (Per Module)	Part #	Price
3-Module Kit (Includes Load Cell)		
5,000 kg	66208	\$6,355.00
10,000 kg	66209	\$6,355.00
20,000 kg	66210	\$7,200.00
30,000 kg	66211	\$7,200.00
4-Module Kit (Includes Load Cell)		
5,000 kg	66212	\$8,369.00
10,000 kg	66213	\$8,369.00
20,000 kg	66214	\$9,672.00
30,000 kg	66215	\$9,672.00

Replacement Mount Parts

Load Rating (Per Module)	Part #	Price
Saddle 5 t to 10 t	170879	\$132.00
Rolling cylinder 5 t to 10 t	170882	\$111.00
Load adaptor 5 t	170880	\$117.00
Load adaptor 10 t	170881	\$165.00
Rubber boot 5 t to 10 t	171211	\$37.00
Saddle 20 t to 30 t	170884	\$127.00
Rolling cylinder 20 t to 30 t	170885	\$58.00
Load adaptor 20 t to 30 t	170883	\$111.00
Rubber boot 20 t to 30 t	171212	\$32.00

Complete Kit Includes

- One JB4SS NEMA Type 4X stainless steel signal trim junction box
- Three or four 220 stainless steel compression mounts
- Three or four 220 stainless steel hermetically sealed compression disk load cells
- 25 ft of hostile environment EL147HE SURVIVOR® load cell cable

Standard Features

- Capacities (per module): 5,000 to 30,000 kg
- Matched output load cells eliminate trimming
- 304 stainless steel construction
- Hermetically sealed, IP68 stainless steel load cells
- Easy load cell replacement
- Integral jacking/shipping bolts

Applications

- Medium- to high-capacity tanks, bins and hoppers
- Washdown applications
- Process control and batch weighing

Specifications

Full Scale Output:

2.0 mV/V

Bridge Resistance:

1,000 ohm nominal

Material/Finish:

Stainless Steel

Operating Temperature Range:

14 °F to 104 °F (-10 °C to 40 °C)

Seal Type:

Hermetically sealed, IP68

Safe Overload:

150% at center loading point, full scale

Rated Excitation:

5 to 10 VDC (15 V maximum)

Combined Error:

0.020% full scale

Insulation Resistance:

2,000 megaohm

Cable Length:

5,000 kg: 5 m
10,000 to 20,000 kg: 10 m
30,000 kg: 20 m

Cable Color Code:

Blue +Excitation
Black -Excitation
White +Signal
Red -Signal
Green +Sense
Grey -Sense

Warranty:

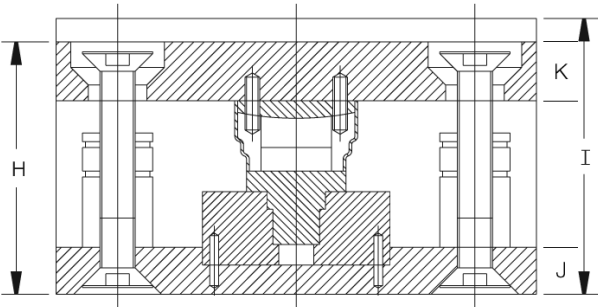
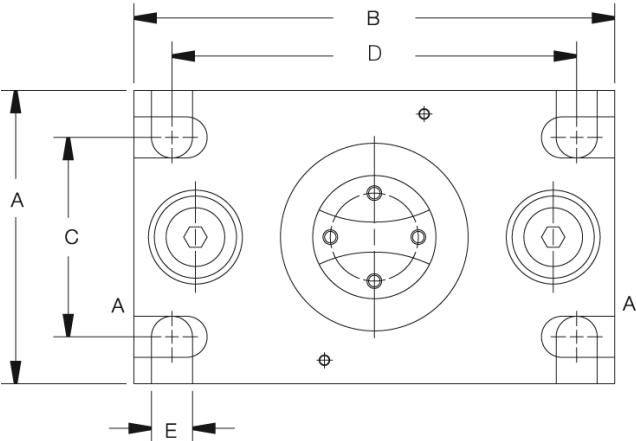
One-year limited

220 Universal Mount

Stainless Steel Weigh Modules, VPG Tedea-Huntleigh

Dimensions

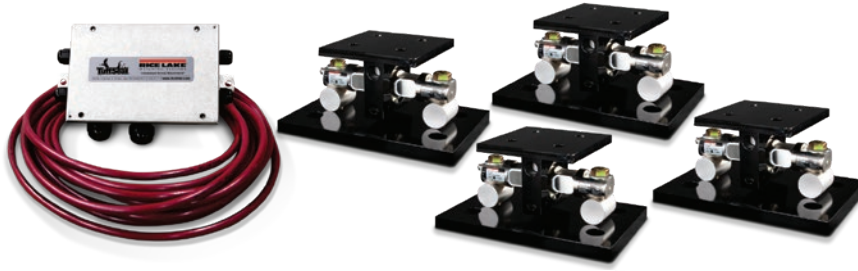
Rated Capacity kg/mm	A	B	C	D	E	H	I	J	K
5,000 to 10,000	127.0	203.0	90.0	170.0	18.0	107.0	Load Cell Replacement Height: 118.0 Operating Height: 107.0	19.1	25.4
20,000 to 30,000	152.0	245.0	115.0	208.0	24.0	148.0	Load Cell Replacement Height: 156.0 Operating Height: 148.1	31.8	25.4



WEIGH MODULES

EZ Mount 1 with RL72020

Mild Steel Weigh Modules, Rice Lake Weighing Systems



Module with
RL72020 double-ended
shear beam load cell

Picture is a representation of actual product.

Load Cell Approvals



Order Information

Load Rating (Per Module)	Part #	Price
Single Module (Does NOT Include Load Cell)		
5,000 lb to 20,000 lb	17823	\$360.00
30,000 lb to 60,000 lb	17824	\$975.00
100,000 lb	17850	\$1,340.00
150,000 lb	29012	\$1,340.00
200,000 lb to 250,000 lb	26068	\$3,060.00
3-Module Kit		
5,000 lb	208881	\$3,310.00
10,000 lb	208882	\$3,310.00
20,000 lb	208883	\$3,310.00
30,000 lb	208884	\$5,350.00
40,000 lb	208885	\$5,350.00
50,000 lb	208886	\$5,350.00
60,000 lb	208887	\$5,350.00
100,000 lb	208888	\$8,620.00
150,000 lb	208889	\$8,620.00
4-Module Kit		
5,000 lb	208892	\$4,300.00
10,000 lb	208893	\$4,300.00
20,000 lb	208894	\$4,300.00
30,000 lb	208895	\$6,765.00
40,000 lb	208896	\$6,765.00
50,000 lb	208897	\$6,765.00
60,000 lb	208898	\$6,765.00
100,000 lb	208899	\$11,205.00
150,000 lb	208900	\$11,205.00

VPG Revere 5103

Order Information

Load Rating (Per Module)	Part #	Price
3-Module Kit		
5,000 lb	18175	\$3,420.00
10,000 lb	18176	\$3,420.00
20,000 lb	18177	\$3,420.00
30,000 lb	32169	\$5,465.00
40,000 lb	32171	\$5,465.00
50,000 lb	18178	\$5,625.00
60,000 lb	18179	\$5,625.00
100,000 lb	18180	\$8,735.00
150,000 lb	18181	\$8,735.00
4-Module Kit		
5,000 lb	18182	\$4,410.00
10,000 lb	18183	\$4,410.00
20,000 lb	18184	\$4,410.00
30,000 lb	32170	\$6,920.00
40,000 lb	32172	\$6,920.00
50,000 lb	18185	\$6,920.00
60,000 lb	18186	\$6,920.00
100,000 lb	18187	\$11,380.00
150,000 lb	18188	\$11,380.00
Dummy Load Cells		
5,000 lb to 20,000 lb	33749	\$90.00
30,000 lb to 60,000 lb	74016	\$122.00
100,000 lb	94175	\$265.00
150,000 lb	158715	\$265.00
Grounding Kit		
5,000 lb to 60,000 lb	126419	\$21.00

Complete Kit Includes

- One JB4SS NEMA Type 4X stainless steel signal trim junction box
- Three or four EZ Mount 1 mild steel compression mounts
- Three or four RL72020 double-ended shear beam load cells
- 25 ft of hostile environment EL147HE SURVIVOR® load cell cable

Standard Features

- Capacities (per module): 5,000 to 250,000 lb
- NTEP Certified load cells
- Unique sliding pin design compensates for thermal expansion/contraction
- Self-checking
- Easy load cell replacement
- Simplified design allows bolting directly to tank and floor
- Center-loaded double-ended shear beam design
- Low-profile design
- Painted mild steel construction

Optional Features

- Kits available with VPG® Revere 5103 load cell, capacities in 5,000 to 150,000 lb

Applications

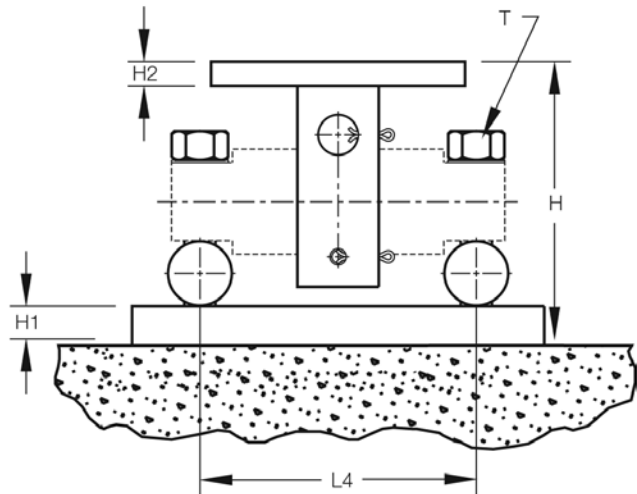
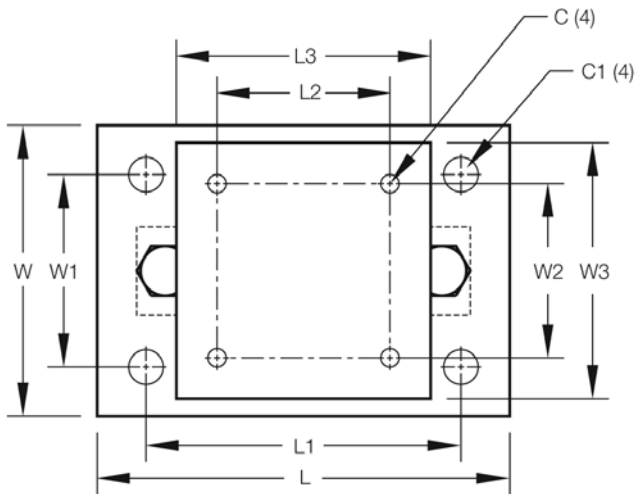
- Medium- to heavy-capacity tank and hopper weighing applications

EZ Mount 1 with RL72020

Mild Steel Weigh Modules, Rice Lake Weighing Systems

Dimensions

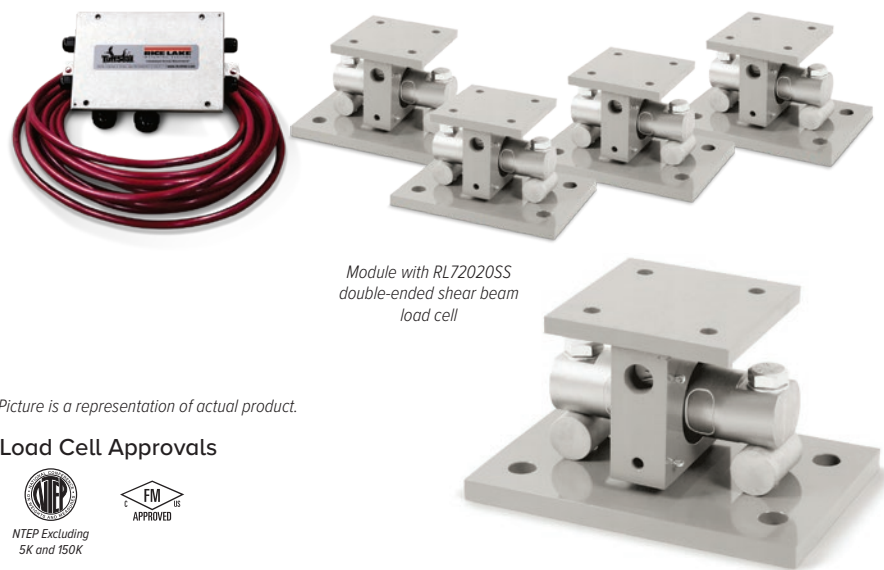
Rated Capacity	C	C1	H	H1	H2	L	L1	L2	L3	L4	T	W	W1	W2	W3
lb/in															
5,000 to 20,000	0.56	1.06	5.31	0.75	0.50	11.00	8.00	3.00	6.00	6.87	5/8-18 UNF	7.50	4.00	3.00	6.00
30,000 to 60,000	0.68	1.19	8.43	1.00	0.75	15.00	11.50	5.12	8.00	8.50	1-14 UNS	10.00	6.00	5.12	8.00
100,000 to 150,000	0.81	1.38	10.37	1.25	1.25	18.00	14.00	7.50	10.00	9.50	1-14 UNS	12.00	9.00	7.50	10.00
200,000 to 250,000	1.06	1.88	16.75	2.00	2.00	26.00	20.00	9.00	12.00	13.00	1 1/2-12 UNS	12.00	6.00	9.00	12.00



WEIGH MODULES

EZ Mount 1 SS with RL72020SS

Stainless Steel Weigh Modules, Rice Lake Weighing Systems



Module with RL72020SS
double-ended shear beam
load cell

Picture is a representation of actual product.

Load Cell Approvals



NTEP Excluding
5K and 150K



Order Information

Load Rating (Per Module)	Part #	Price
Single Module (Does NOT Include Load Cell)		
5,000 lb to 20,000 lb	17943	\$885.00
30,000 lb to 60,000 lb	17944	\$2,450.00
100,000 lb	17945	\$4,480.00
150,000 lb	29011	\$4,480.00
3-Module Kit		
5,000 lb*	208914	\$5,290.00
10,000 lb	208917	\$5,290.00
20,000 lb	208918	\$5,290.00
30,000 lb	208919	\$10,640.00
40,000 lb	208920	\$10,640.00
50,000 lb	208921	\$10,640.00
60,000 lb	208922	\$10,640.00
100,000 lb	208923	\$19,570.00
150,000 lb*	208924	\$19,570.00

* Non-NTEP Certified

Load Rating (Per Module)	Part #	Price
4-Module Kit		
5,000 lb*	208925	\$6,865.00
10,000 lb	208926	\$6,865.00
20,000 lb	208927	\$6,865.00
30,000 lb	208928	\$14,010.00
40,000 lb	208929	\$14,010.00
50,000 lb	208930	\$14,010.00
60,000 lb	208931	\$14,010.00
100,000 lb	208932	\$26,030.00
150,000 lb*	208933	\$26,030.00
Dummy Load Cells (Mild Steel)		
5,000 lb to 20,000 lb	33749	\$90.00
30,000 lb to 60,000 lb	74016	\$122.00
100,000 lb	94175	\$265.00
150,000 lb	158715	\$265.00
Grounding Kit		
5,000 lb-60,000 lb	126419	\$21.00

Includes ground strap and mounting hardware per mount

Complete Kit Includes

- One JB4SS NEMA Type 4X stainless steel signal trim junction box
- Three or four EZ Mount 1 stainless steel compression mounts
- Three or four RL72020SS stainless steel double-ended shear beam load cells
- 25 ft of our hostile environment EL147HE SURVIVOR® load cell cable

Standard Features

- Capacities (per module): 5,000 to 150,000 lb
- Unique sliding pin design compensates for thermal expansion/contraction
- Self-checking
- Easy load cell replacement
- Simplified design allows bolting directly to tank and floor
- Center-loaded double-ended shear beam design
- Low-profile design
- 304 stainless steel construction

Optional Features

- Kits available with VPG Revere 9103 load cell, capacities in 5,000 to 150,000 lb

Applications

- Medium to heavy-capacity tank and hopper weighing applications

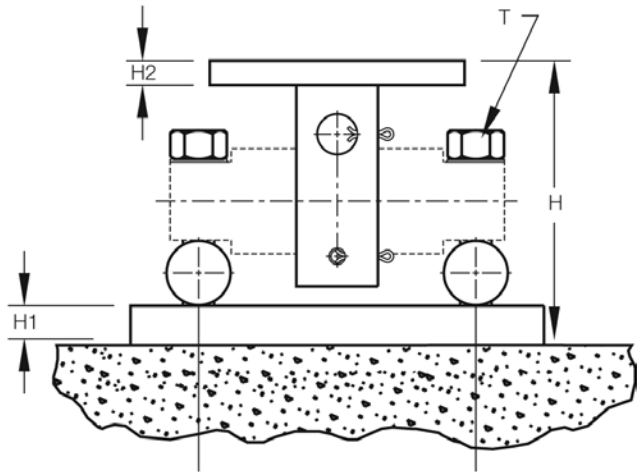
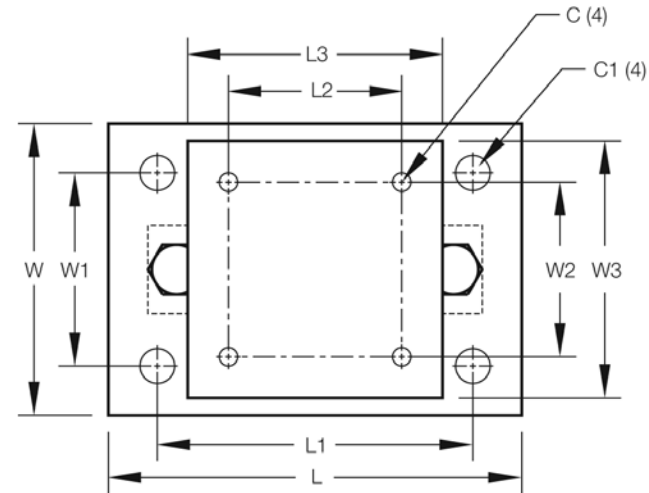
WEIGH MODULES

EZ Mount 1 SS with RL72020SS

Stainless Steel Weigh Modules, Rice Lake Weighing Systems

Dimensions

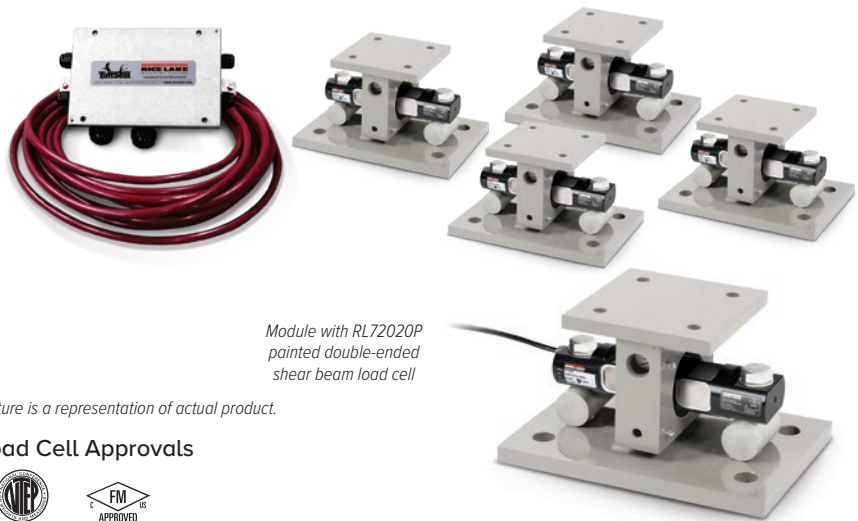
Rated Capacity	C	C1	H	H1	H2	L	L1	L2	L3	L4	T	W	W1	W2	W3
lb/in															
5,000 to 20,000	0.56	1.06	5.31	0.75	0.50	11.00	8.00	3.00	6.00	6.87	5/8-18 UNF	7.50	4.00	3.00	6.00
30,000 to 60,000	0.68	1.19	8.43	1.00	0.75	15.00	11.50	5.12	8.00	8.50	1-14 UNS	10.00	6.00	5.12	8.00
100,000 to 150,000	0.81	1.38	10.37	1.25	1.25	18.00	14.00	7.50	10.00	9.50	1-14 UNS	12.00	9.00	7.50	10.00



WEIGH MODULES

EZ Mount 1 with Painted RL72020P

Rice Lake Weighing Systems



Module with RL72020P
painted double-ended
shear beam load cell

Picture is a representation of actual product.

Load Cell Approvals



Order Information

Load Rating (Per Module)	Part #	Price
Single Module (Does NOT Include Load Cell)		
5,000 lb to 20,000 lb	17943	\$885.00
30,000 lb to 60,000 lb	17944	\$2,450.00
100,000 lb	17945	\$4,480.00
150,000 lb	29011	\$4,480.00
3-Module Kit		
5,000 lb	208957	\$4,775.00
10,000 lb	208959	\$4,775.00
20,000 lb	208961	\$4,775.00
30,000 lb	208963	\$9,895.00
40,000 lb	208965	\$9,895.00
50,000 lb	208967	\$9,895.00
60,000 lb	208969	\$9,895.00
100,000 lb	208971	\$18,515.00
150,000 lb	208973	\$18,515.00

Load Rating (Per Module)	Part #	Price
4-Module Kit		
5,000 lb	208958	\$6,380.00
10,000 lb	208960	\$6,380.00
20,000 lb	208962	\$6,380.00
30,000 lb	208964	\$13,195.00
40,000 lb	208966	\$13,195.00
50,000 lb	208968	\$13,195.00
60,000 lb	208970	\$13,195.00
100,000 lb	208972	\$24,650.00
150,000 lb	208974	\$24,650.00
Dummy Load Cells (Mild Steel)		
5,000 lb to 20,000 lb	33749	\$90.00
30,000 lb to 60,000 lb	74016	\$122.00
100,000 lb	94175	\$265.00
150,000 lb	158715	\$265.00
Grounding Kit		
5,000 lb-60,000 lb	126419	\$21.00

Includes ground strap and mounting hardware per mount

Complete Kit Includes

- One JB4SS NEMA Type 4X stainless steel signal trim junction box
- Three or four EZ Mount 1 stainless steel compression mounts
- Three or four RL72020P alloy painted double-ended shear beam load cells
- 25 ft of hostile environment EL147HE SURVIVOR load cell cable

Standard Features

- Capacities (per module): 5,000 to 150,000 lb
- Unique sliding pin design compensates for thermal expansion/contraction
- Self-checking
- Easy load cell replacement
- Simplified design allows bolting directly to tank and floor
- Center-loaded double-ended shear beam design
- Low-profile design
- 304 stainless steel construction (mount)

Applications

- Medium- to heavy-capacity tank and fertilizer hopper weighing applications

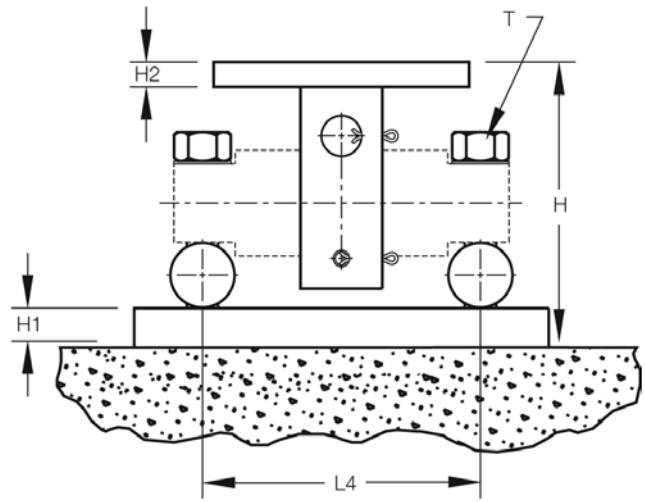
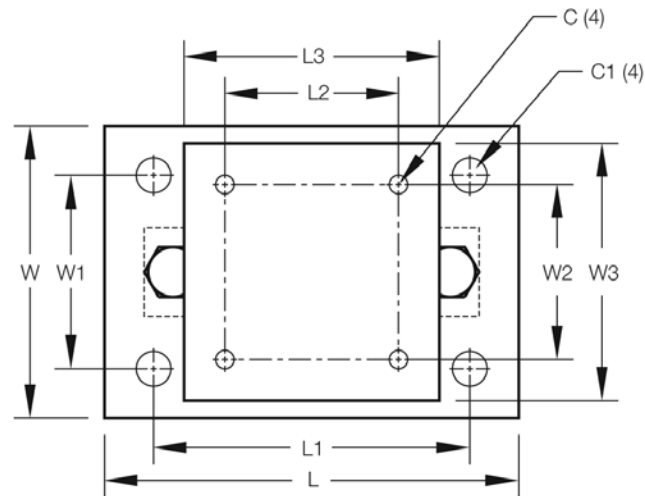
WEIGH MODULES

EZ Mount 1 with Painted RL72020P

Rice Lake Weighing Systems

Dimensions

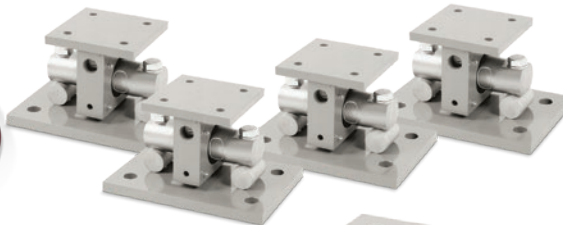
Rated Capacity	C	C1	H	H1	H2	L	L1	L2	L3	L4	T	W	W1	W2	W3
lb/in															
5,000 to 20,000	0.56	1.06	5.31	0.75	0.50	11.00	8.00	3.00	6.00	6.87	5/8-18 UNF	7.50	4.00	3.00	6.00
30,000 to 60,000	0.68	1.19	8.43	1.00	0.75	15.00	11.50	5.12	8.00	8.50	1-14 UNS	10.00	6.00	5.12	8.00
100,000 to 150,000	0.81	1.38	10.37	1.25	1.25	18.00	14.00	7.50	10.00	9.50	1-14 UNS	12.00	9.00	7.50	10.00



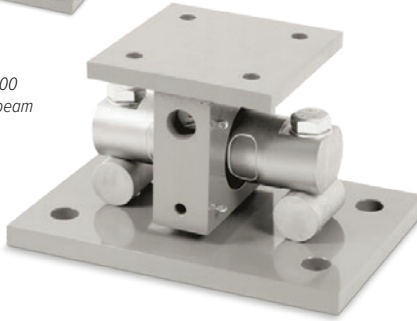
WEIGH MODULES

EZ Mount 1 with RL70000

Mild Steel Weigh Modules, Rice Lake Weighing Systems



Module with RL70000
double-ended shear beam
load cell



Picture is a representation of actual product.

Load Cell Approvals



Order Information

Load Rating (Per Module)	Part #	Price
Single Module (Does NOT Include Load Cell)		
5,000 lb to 20,000 lb	17823	\$360.00
30,000 lb to 60,000 lb	17824	\$975.00
100,000 lb	17850	\$1,340.00
150,000 lb	29012	\$1,340.00
200,000 lb-250,000 lb	26068	\$3,060.00
3-Module Kit		
5,000 lb	18163	\$3,265.00
10,000 lb	18164	\$3,310.00
20,000 lb	18165	\$3,310.00
30,000 lb	32164	\$5,350.00
40,000 lb	32167	\$5,350.00
50,000 lb	18166	\$5,350.00
60,000 lb	18167	\$5,350.00
100,000 lb	18168	\$8,620.00
150,000 lb	43290	\$8,620.00
4-Module Kit		
5,000 lb	18169	\$4,240.00
10,000 lb	18170	\$4,300.00
20,000 lb	18171	\$4,240.00
30,000 lb	32165	\$6,765.00
40,000 lb	32166	\$6,765.00
50,000 lb	18172	\$6,765.00
60,000 lb	18173	\$6,765.00
100,000 lb	18174	\$11,245.00
150,000 lb	43291	\$11,245.00

VPG Revere 5103 Order Information

Load Rating (Per Module)	Part #	Price
3-Module Kit		
5,000 lb	18175	\$3,420.00
10,000 lb	18176	\$3,420.00
20,000 lb	18177	\$3,420.00
30,000 lb	32169	\$5,465.00
40,000 lb	32171	\$5,465.00
50,000 lb	18178	\$5,625.00
60,000 lb	18179	\$5,625.00
100,000 lb	18180	\$8,735.00
150,000 lb	18181	\$8,735.00
4-Module Kit		
5,000 lb	18182	\$4,410.00
10,000 lb	18183	\$4,410.00
20,000 lb	18184	\$4,410.00
30,000 lb	32170	\$6,920.00
40,000 lb	32172	\$6,920.00
50,000 lb	18185	\$6,920.00
60,000 lb	18186	\$6,920.00
100,000 lb	18187	\$11,380.00
150,000 lb	18188	\$11,380.00
Dummy Load Cells		
5,000 lb to 20,000 lb	33749	\$90.00
30,000 lb to 60,000 lb	74016	\$122.00
100,000 lb	94175	\$265.00
150,000 lb	158715	\$265.00
Grounding Kit		
5,000 lb to 60,000 lb	126419	\$21.00

Includes ground strap and mounting hardware per mount

Complete Kit Includes

- One JB4SS NEMA Type 4X stainless steel signal trim junction box
- Three or four EZ Mount 1 mild steel compression mounts
- Three or four RL70000 double-ended shear beam load cells
- 25 ft of hostile environment EL147HE SURVIVOR® load cell cable

Standard Features

- Capacities (per module): 5,000 to 250,000 lb
- NTEP Certified load cells
- Unique sliding pin design compensates for thermal expansion/contraction
- Self-checking
- Easy load cell replacement
- Simplified design allows bolting directly to tank and floor
- Center-loaded double-ended shear beam design
- Low-profile design
- Painted mild steel construction

Optional Features

- Kits available with VPG® Revere 5103 load cell, capacities in 5,000 to 150,000 lb

Applications

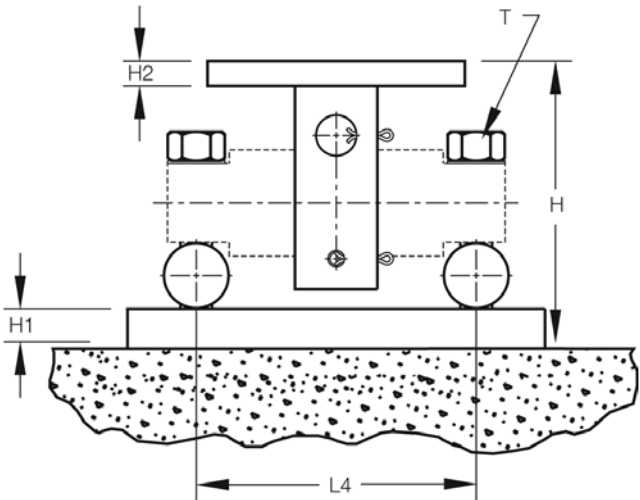
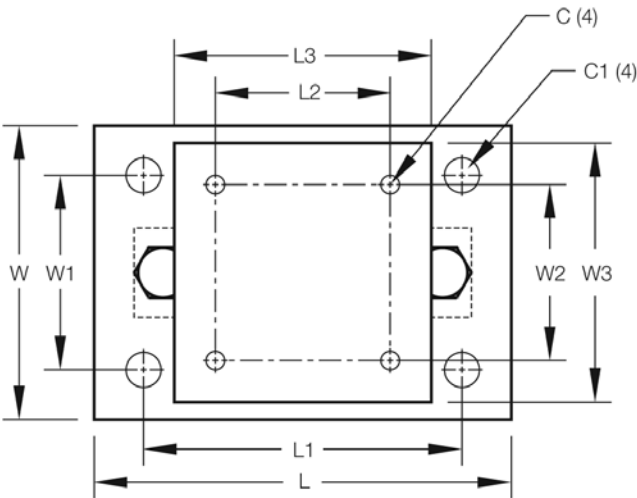
- Medium- to heavy-capacity tank and hopper weighing applications

EZ Mount 1 with RL70000

Mild Steel Weigh Modules, Rice Lake Weighing Systems

Dimensions

Rated Capacity	C	C1	H	H1	H2	L	L1	L2	L3	L4	T	W	W1	W2	W3
lb/in															
5,000 to 20,000	0.56	1.06	5.31	0.75	0.50	11.00	8.00	3.00	6.00	6.87	5/8-18 UNF	7.50	4.00	3.00	6.00
30,000 to 60,000	0.68	1.19	8.43	1.00	0.75	15.00	11.50	5.12	8.00	8.50	1-14 UNS	10.00	6.00	5.12	8.00
100,000 to 150,000	0.81	1.38	10.37	1.25	1.25	18.00	14.00	7.50	10.00	9.50	1-14 UNS	12.00	9.00	7.50	10.00
200,000 to 250,000	1.06	1.88	16.75	2.00	2.00	26.00	20.00	9.00	12.00	13.00	1 1/2-12 UNS	12.00	6.00	9.00	12.00

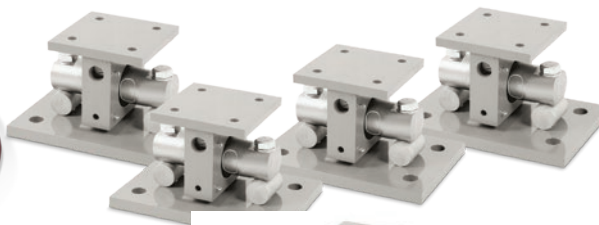


WEIGH MODULES

EZ Mount 1 with RL70000SS

Stainless Steel Weigh Modules, Rice Lake Weighing Systems

Discontinued
Limited Stock Available



Module with RL70000SS
double-ended shear beam
load cell

Picture is a representation of actual product.

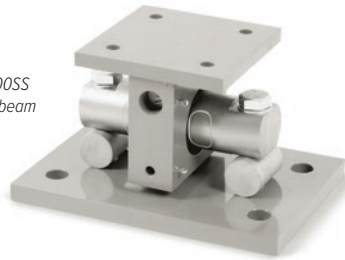
Load Cell Approvals



NTEP Excluding
5K and 150K



APPROVED



Complete Kit Includes

- One JB4SS NEMA Type 4X stainless steel signal trim junction box
- Three or four EZ Mount 1 stainless steel compression mounts
- Three or four RL70000SS stainless steel double-ended shear beam load cells
- 25 ft of hostile environment EL147HE SURVIVOR® load cell cable

Standard Features

- Capacities (per module): 5,000 to 150,000 lb
- Unique sliding pin design compensates for thermal expansion/contraction
- NTEP Certified load cells (10 to 100 K)
- Self-checking
- Easy load cell replacement
- Simplified design allows bolting directly to tank and floor
- Center-loaded double-ended shear beam design
- Low-profile design
- 304 stainless steel construction

Optional Features

- Kits available with VPG Revere 9103 load cell, capacities in 5,000 to 150,000 lb

Applications

- Medium to heavy-capacity tank and hopper weighing applications

Order Information

Load Rating (Per Module)	Part #	Price
Single Module (Does NOT Include Load Cell)		
5,000 lb to 20,000 lb	17943	\$885.00
30,000 lb to 60,000 lb	17944	\$2,450.00
100,000 lb	17945	\$4,480.00
150,000 lb	29011	\$4,480.00
3-Module Kit		
5,000 lb*	36195	\$5,065.00
10,000 lb	36196	\$5,065.00
20,000 lb	36197	\$5,065.00
30,000 lb	36198	\$9,582.00
40,000 lb	36199	\$9,940.00
50,000 lb	36200	\$9,940.00
60,000 lb	36201	\$9,940.00
100,000 lb	36202	\$18,500.00
150,000 lb*	43288	\$18,500.00

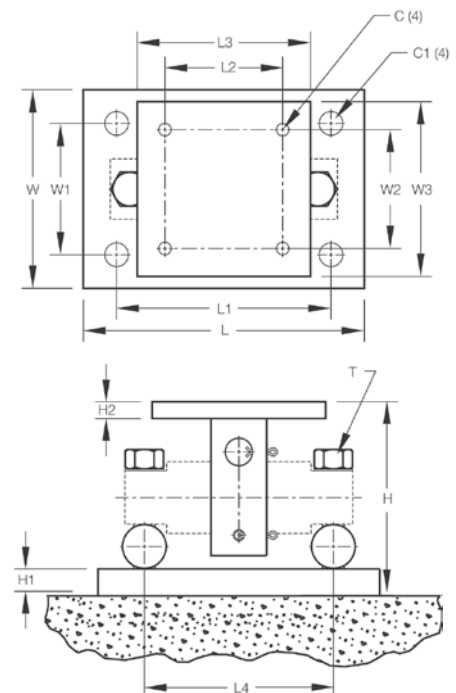
* Non-NTEP Certified

Load Rating (Per Module)	Part #	Price
4-Module Kit		
5,000 lb*	36203	\$6,785.00
10,000 lb	36204	\$6,625.00
20,000 lb	36205	\$6,625.00
30,000 lb	36206	\$13,010.00
40,000 lb	36207	\$13,490.00
50,000 lb	36208	\$13,317.00
60,000 lb	36209	\$13,490.00
100,000 lb	36210	\$26,030.00
150,000 lb*	43289	\$26,030.00
Dummy Load Cells (Mild Steel)		
5,000 lb to 20,000 lb	33749	\$90.00
30,000 lb to 60,000 lb	74016	\$122.00
100,000 lb	94175	\$265.00
150,000 lb	158715	\$265.00
Grounding Kit		
5,000 lb to 60,000 lb	126419	\$21.00

Includes ground strap and mounting hardware per mount

Dimensions

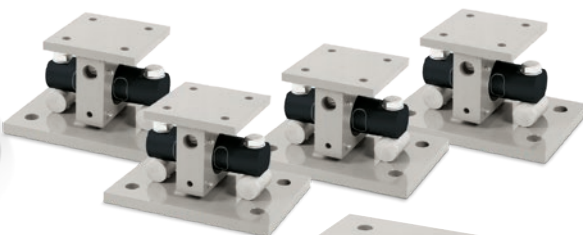
Rated Capacity	C	C1	H	H1	H2	L	L1	L2	L3	L4	T	W	W1	W2	W3
lb/in															
5,000 to 20,000	0.56	1.06	5.31	0.75	0.50	11.00	8.00	3.00	6.00	6.87	5/8-18 UNF	7.50	4.00	3.00	6.00
30,000 to 60,000	0.68	1.19	8.43	1.00	0.75	15.00	11.50	5.12	8.00	8.50	1-14 UNS	10.00	6.00	5.12	8.00
100,000 to 150,000	0.81	1.38	10.37	1.25	1.25	18.00	14.00	7.50	10.00	9.50	1-14 UNS	12.00	9.00	7.50	10.00





EZ Mount 1 with Painted RL70000

Rice Lake Weighing Systems



Module with RL70000 painted double-ended shear beam load cell

Available in configurations with three or four mounting assemblies. Picture is a representation of actual product.

Load Cell Approvals



Order Information

Load Rating (Per Module)	Part #	Price
Single Module (Does NOT Include Load Cell)		
5,000 lb to 20,000 lb	17943	\$885.00
30,000 lb to 60,000 lb	17944	\$2,450.00
100,000 lb	17945	\$4,480.00
150,000 lb	29011	\$4,480.00
3-Module Kit		
5,000 lb*	207819	\$4,775.00
10,000 lb	207820	\$4,775.00
20,000 lb	207821	\$4,775.00
30,000 lb	207822	\$9,895.00
40,000 lb	207823	\$9,895.00
50,000 lb	207824	\$9,895.00
60,000 lb	207825	\$9,895.00
100,000 lb	207826	\$18,515.00
150,000 lb*	207827	\$18,515.00

* Non-NTEP Certified

Load Rating (Per Module)	Part #	Price
4-Module Kit		
5,000 lb*	207829	\$6,385.00
10,000 lb	207830	\$6,385.00
20,000 lb	207831	\$6,385.00
30,000 lb	207832	\$13,195.00
40,000 lb	207833	\$13,195.00
50,000 lb	207834	\$13,195.00
60,000 lb	207835	\$13,195.00
100,000 lb	207836	\$24,650.00
150,000 lb*	207837	\$24,650.00
Dummy Load Cells (Mild Steel)		
5,000 lb to 20,000 lb	33749	\$90.00
30,000 lb to 60,000 lb	74016	\$122.00
100,000 lb	94175	\$265.00
150,000 lb	158715	\$265.00
Grounding Kit		
5,000 lb to 60,000 lb	126419	\$21.00

Includes ground strap and mounting hardware per mount

Dimensions

Rated Capacity	C	C1	H	H1	H2	L	L1	L2	L3	L4	T	W	W1	W2	W3
lb/in															
5,000 to 20,000	0.56	1.06	5.31	0.75	0.50	11.00	8.00	3.00	6.00	6.87	5/8-18 UNF	7.50	4.00	3.00	6.00
30,000 to 60,000	0.68	1.19	8.43	1.00	0.75	15.00	11.50	5.12	8.00	8.50	1-14 UNS	10.00	6.00	5.12	8.00
100,000 to 150,000	0.81	1.38	10.37	1.25	1.25	18.00	14.00	7.50	10.00	9.50	1-14 UNS	12.00	9.00	7.50	10.00

Complete Kit Includes

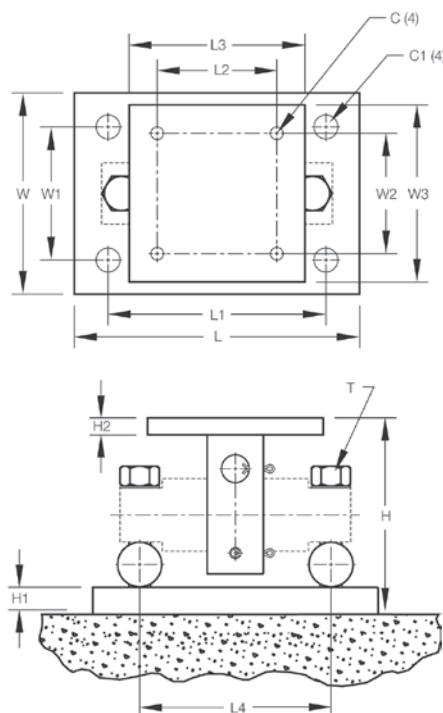
- One JB4SS NEMA Type 4X stainless steel signal trim junction box
- Three or four EZ Mount 1 stainless steel compression mounts
- Three or four RL70000 alloy painted double-ended shear beam load cells
- 25 ft of our hostile environment EL147HE SURVIVOR® load cell cable

Standard Features

- Capacities (per module): 5,000 to 150,000 lb
- NTEP Certified load cells (5 to 100 k)
- Unique sliding pin design compensates for thermal expansion/contraction
- Self-checking
- Easy load cell replacement
- Simplified design allows bolting directly to tank and floor
- Center-loaded double-ended shear beam design
- Low-profile design
- 304 stainless steel construction (mount)

Applications

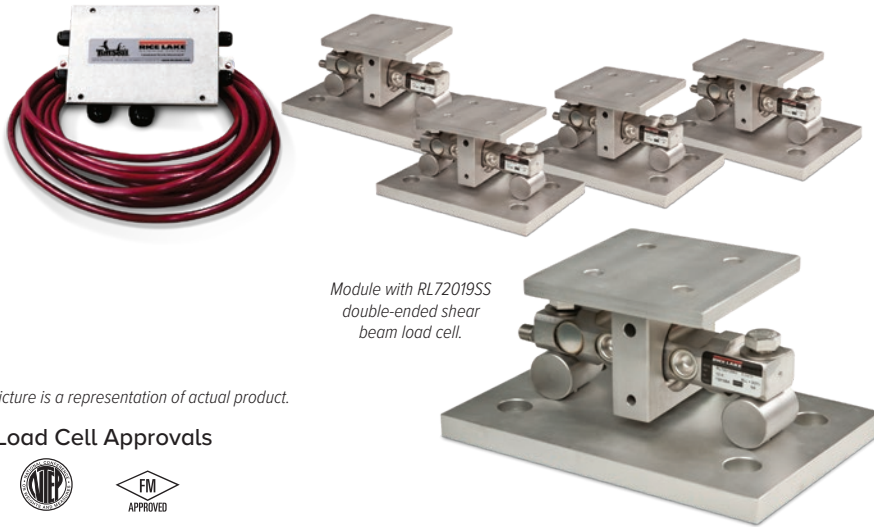
- Medium-to heavy-capacity tank and fertilizer hopper weighing applications



WEIGH MODULES

EZ Mount 1 HE

Stainless Steel Weigh Modules, Rice Lake Weighing Systems



Module with RL72019SS double-ended shear beam load cell.

Picture is a representation of actual product.

Load Cell Approvals



Order Information

Load Rating (Per Module)	Part #	Price
3-Module Kit		
5,000 lb*	46695	\$6,235.00
10,000 lb	46696	\$6,235.00
20,000 lb	46697	\$6,235.00
30,000 lb	46698	\$12,375.00
40,000 lb	46699	\$12,375.00
50,000 lb	46700	\$12,375.00
60,000 lb	46701	\$12,375.00
4-Module Kit		
5,000 lb*	46702	\$8,390.00
10,000 lb	46703	\$8,390.00
20,000 lb	46704	\$8,390.00
30,000 lb	46705	\$16,175.00
40,000 lb	46706	\$16,175.00
50,000 lb	46707	\$16,175.00
60,000 lb	46708	\$16,175.00
Dummy Load Cells (Mild Steel)		
5,000 lb to 20,000 lb	33749	\$90.00
30,000 lb to 60,000 lb	74016	\$122.00
Grounding Kit		
5,000 lb to 60,000 lb	126419	\$21.00

Includes ground strap and mounting hardware
*Non-NTEP

Shims

	Part #	Price
5,000 lb to 20,000 lb, Stainless Steel		
0.0625 in	150886	\$12.00
0.125 in	150888	\$18.00
0.250 in	150889	\$29.00
30,000 lb to 60,000 lb, Stainless Steel		
0.0625 in	150890	\$19.00
0.125 in	150891	\$30.00
0.250 in	150892	\$64.00
100,000 lb to 150,000 lb, Stainless Steel		
0.0625 in	150893	\$32.00
0.125 in	150894	\$41.00
0.250 in	150896	\$97.00
5,000 lb to 20,000 lb, Mild Steel		
0.0625 in	150874	\$5.00
0.125 in	150876	\$6.00
0.250 in	150877	\$8.00
30,000 lb to 60,000 lb, Mild Steel		
0.0625 in	150878	\$6.00
0.125 in	150880	\$9.00
0.250 in	150881	\$11.00
100,000 lb to 150,000 lb, Mild Steel		
0.0625 in	150882	\$9.00
0.125 in	150884	\$13.00
0.250 in	150885	\$18.00

Complete Kit Includes

- One JB4SS NEMA Type 4X stainless steel signal trim junction box
- Three or four EZ Mount 1 stainless steel compression mounts
- Three or four RL72019SS welded sealed stainless steel double-ended shear beam load cells
- 25 ft of our hostile environment EL147HE SURVIVOR® load cell cable

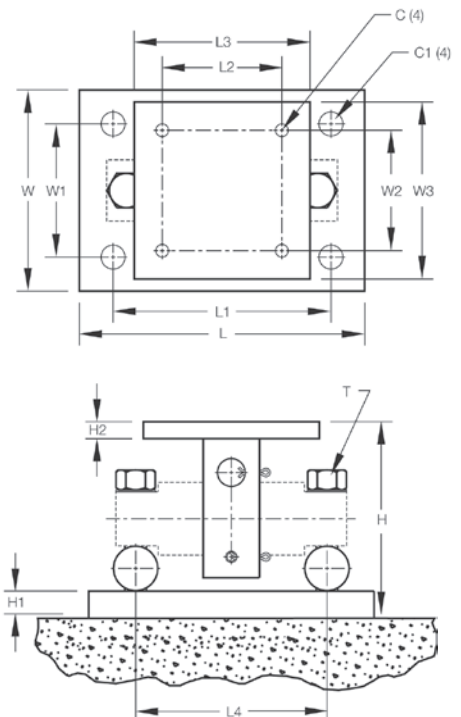
Standard Features

- Capacities (per module): 5,000 to 60,000 lb
- Unique sliding pin design compensates for thermal expansion/contraction
- Self-checking
- Easy load cell replacement
- Simplified design allows bolting directly to tank and floor
- Center-loaded, double-ended shear beam design
- Low-profile design
- 304 stainless steel construction

Applications

- Medium- to heavy-capacity tank and hopper weighing applications

WEIGH MODULES



Dimensions

Rated Capacity	C	C1	H	H1	H2	L	L1	L2	L3	L4	T	W	W1	W2	W3
lb/in															
5,000 to 20,000	0.56	1.06	5.31	0.75	0.50	11.00	8.00	3.00	6.00	6.87	5/8-18 UNF	7.50	4.00	3.00	6.00
30,000 to 60,000	0.68	1.19	8.43	1.00	0.75	15.00	11.50	5.12	8.00	8.50	1-14 UNS	10.00	6.00	5.12	8.00

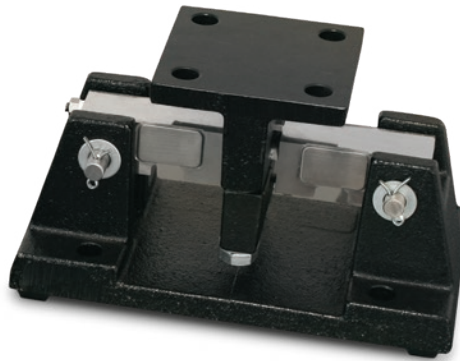
NOTES: Mounting bolts (T) may project on lower side of base plate. Foundation plate not included

RL1600 Series

Cast Iron Weigh Modules



Cast iron module with
RL75016 double-ended
beam load cell



Picture is a representation of actual product.

Order Information

Load Rating (Per Module)	Part #	Price
Single Module (Does NOT Include Load Cell)		
1,000 lb to 5,000 lb	17964	\$185.00
10,000 lb to 25,000 lb	17965	\$357.00
3-Module Kit		
1,000 lb	25663	\$2,285.00
1,500 lb	25664	\$2,285.00
2,000 lb	25665	\$2,285.00
2,500 lb	25666	\$2,285.00
3,000 lb	25667	\$2,285.00
5,000 lb	25668	\$2,285.00
10,000 lb	25669	\$3,000.00
15,000 lb	25671	\$3,000.00
20,000 lb	25672	\$3,000.00
25,000 lb	25674	\$3,000.00
4-Module Kit		
1,000 lb	25675	\$2,925.00
1,500 lb	25676	\$2,925.00
2,000 lb	25677	\$2,925.00
2,500 lb	25678	\$2,925.00
3,000 lb	25679	\$2,925.00
5,000 lb	25680	\$2,925.00
10,000 lb	25681	\$3,875.00
15,000 lb	25682	\$3,875.00
20,000 lb	25683	\$3,875.00
25,000 lb	25684	\$3,875.00

VPG Sensortronics 65016 Order Information

Load Rating (Per Module)	Part #	Price
3-Module Kit		
1,000 lb	25685	\$2,685.00
1,500 lb	25686	\$2,685.00
2,500 lb	25688	\$2,685.00
5,000 lb	25690	\$2,685.00
10,000 lb	25691	\$3,400.00
15,000 lb	25692	\$3,400.00
20,000 lb	25693	\$3,400.00
25,000 lb	25694	\$3,400.00
4-Module Kit		
1,000 lb	25695	\$3,485.00
1,500 lb	25696	\$3,485.00
2,500 lb	25698	\$3,485.00
5,000 lb	25700	\$3,485.00
10,000 lb	25701	\$4,465.00
15,000 lb	25702	\$4,465.00
20,000 lb	25703	\$4,465.00
25,000 lb	25704	\$4,465.00
Dummy Load Cells		
1,000 lb to 5,000 lb	18236	\$26.00
10,000 lb to 25,000 lb	18237	\$42.00

Shims, Mild Steel

	Part #	Price
1,000 lb to 5,000 lb		
0.0625 in	150844	\$2.00
0.125 in	150845	\$3.00
0.250 in	150846	\$3.00
10,000 lb to 25,000 lb		
0.0625 in	150847	\$5.00
0.125 in	150848	\$7.50
0.250 in	150849	\$8.00

Complete Kit Includes

- One JB4SS NEMA Type 4X stainless steel signal trim junction box
- Three or four RL1600 cast iron compression mounts
- Three or four RL75016 double-ended shear beam load cells
- 25 ft of hostile environment EL147HE SURVIVOR® load cell cable

Standard Features

- Capacities (per module): 1,000 to 25,000 lb
- Cast iron construction
- Self-checking easy-to-use design allows module to be bolted directly to tank leg without requiring additional mounting plates or load buttons
- Environmentally protected load cells
- Double-ended beam design, center loaded

Optional Features

- Kits available with VPG® Sensortronics 65016 load cells, capacities (per module): 1,000 to 25,000 lb

Applications

- Medium- to heavy-capacity tanks, bins and hoppers
- Bulk material management

WEIGH MODULES

RL1600 Series

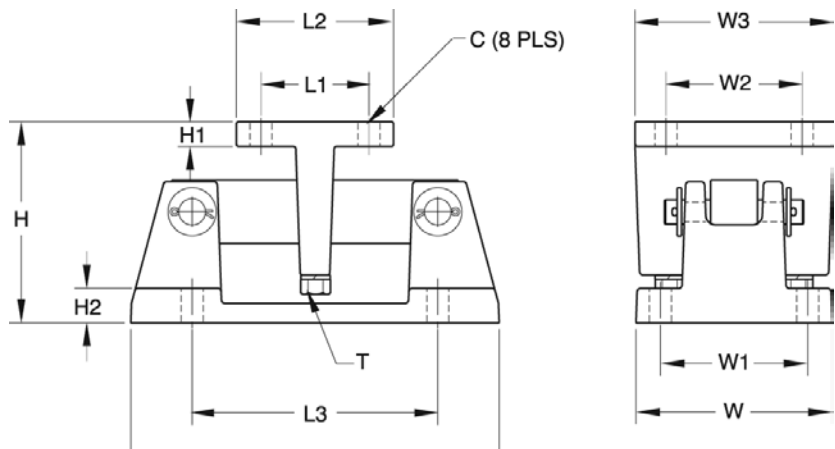
Cast Iron Weigh Modules

Load Cell Upgrade

RL75016SS Stainless Steel Load Cells	
Three mount kits, 1,000 lb to 25,000 lb	\$75.00 added to list price
Four mount kits, 1,000 lb to 25,000 lb	\$100.00 added to list price
RL75016WHE Stainless Steel Hermetic Load Cells	
Three mount kits 1,000 lb to 5,000 lb	\$540.00, 10 k-25 k \$588.00 added to list price
Four mount kits 1,000 lb to 5,000 lb	\$720.00, 10 k-25 k \$784.00 added to list price
Contact factory for a 50,000 lb to 75,000 lb upgrade	

Dimensions

Rated Capacity	C	H	H1	H2	L	L1	L2	L3	T	W	W1	W2	W3
lb/in													
1,000 to 5,000	0.56	5.00	0.50	0.50	9.31	2.75	4.00	6.25	1/2-13 UNC	5.00	3.75	2.75	4.00
10,000 to 25,000	0.78	7.89	0.75	0.75	12.00	6.00	8.00	7.50	3/4-10 UNC	8.00	6.00	6.00	8.00



WEIGH MODULES

RL1600 Series

Mild Steel Weigh Modules



Mild steel module with RL75016 double-ended shear beam load cell.

Picture is a representation of actual product.

Load Cell Approvals



Order Information

Load Rating (Per Module)	Part #	Price
Single Module (Does NOT Include Load Cell)		
1,000 lb to 5,000 lb	17812	\$185.00
10,000 to 25,000 lb	17814	\$357.00
50,000 lb	17816	\$1,197.00
75,000 lb	25346	\$1,197.00
3-Module Kit		
1,000 lb	18117	\$2,285.00
1,500 lb	18118	\$2,285.00
2,000 lb	18119	\$2,285.00
2,500 lb	18120	\$2,285.00
3,000 lb	18121	\$2,285.00
5,000 lb	18122	\$2,285.00
10,000 lb	18123	\$3,000.00
15,000 lb	18124	\$3,000.00
20,000 lb	18125	\$3,000.00
25,000 lb	18126	\$3,000.00
50,000 lb	18127	\$6,305.00
75,000 lb	25348	\$6,305.00
4-Module Kit		
1,000 lb	18129	\$2,925.00
1,500 lb	18130	\$2,925.00
2,000 lb	18131	\$2,925.00
2,500 lb	18132	\$2,925.00
3,000 lb	18133	\$2,925.00
5,000 lb	18134	\$2,925.00
10,000 lb	18135	\$3,875.00
15,000 lb	18136	\$3,875.00
20,000 lb	18137	\$3,875.00
25,000 lb	18138	\$3,875.00
50,000 lb	18139	\$8,425.00
75,000 lb	25349	\$8,425.00

VPG Sensortronics 65016 Order Information

Load Rating (Per Module)	Part #	Price
3-Module Kit		
1,000 lb	18189	\$2,685.00
1,500 lb	18190	\$2,685.00
2,500 lb	18192	\$2,685.00
5,000 lb	18194	\$2,685.00
10,000 lb	18195	\$3,400.00
15,000 lb	18196	\$3,400.00
20,000 lb	18197	\$3,400.00
25,000 lb	18198	\$3,400.00
50,000 lb	18199	\$6,800.00
75,000 lb	25350	\$6,800.00
4-Module Kit		
1,000 lb	18201	\$3,485.00
1,500 lb	18202	\$3,485.00
2,500 lb	18204	\$3,485.00
5,000 lb	18206	\$3,485.00
10,000 lb	18207	\$4,465.00
15,000 lb	18208	\$4,465.00
20,000 lb	18209	\$4,465.00
25,000 lb	18210	\$4,465.00
50,000 lb	18211	\$8,920.00
75,000 lb	25351	\$8,920.00
Dummy Load Cells		
1,000 lb to 5,000 lb	18236	\$26.00
10,000 lb to 25,000 lb	18237	\$42.00
50,000 lb	18238	\$56.00

Complete Kit Includes

- One JB4SS NEMA Type 4X stainless steel signal trim junction box
- Three or four RL1600 mild steel compression mounts
- Three or four RL75016 double-ended shear beam load cells
- 25 ft of our hostile environment EL147HE SURVIVOR® load cell cable

Standard Features

- Capacities (per module): 1,000 to 75,000 lb
- Self-checking, easy-to-use design allows module to be bolted directly to tank leg without requiring additional mounting plates or load buttons
- Environmentally protected load cells
- Double-ended shear beam design, center loaded
- Painted mild steel construction

Optional Features

- Kits available with VPG Sensortronics 65016 load cells, capacities (per module): 1,000 to 75,000 lb

Applications

- Medium- to heavy-capacity tanks, bins and hoppers
- Bulk material management

WEIGH MODULES

Shims, Mild Steel

	Part #	Price
1,000 lb to 5,000 lb		
0.0625 in	150844	\$2.00
0.125 in	150845	\$3.00
0.250 in	150846	\$3.00
10,000 lb to 25,000 lb		
0.0625 in	150847	\$5.00
0.125 in	150848	\$7.50
0.250 in	150849	\$8.00
50,000 lb to 75,000 lb		
0.0625 in	150850	\$7.00
0.125 in	150851	\$9.00
0.250 in	150866	\$7.50

RL1600 Series

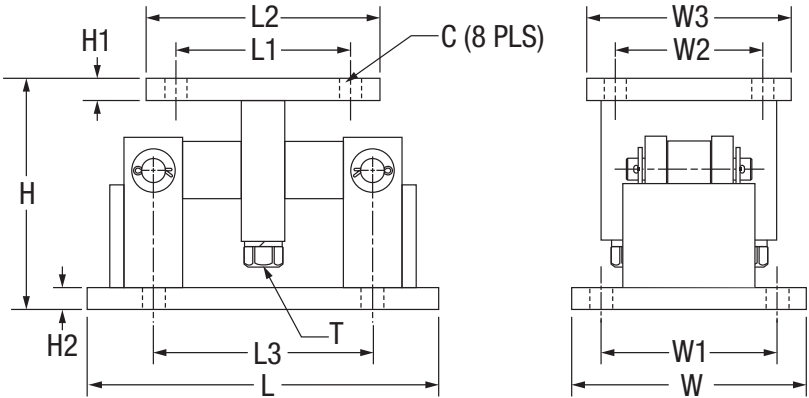
Mild Steel Weigh Modules

Load Cell Upgrade

RL75016SS Stainless Steel Load Cells	
Three mount kits, 1,000 lb to 25,000 lb \$75.00 added to list price	
Four mount kits, 1,000 lb 25,000 lb \$100.00 added to list price	
RL75016WHE Stainless Steel Hermetic Load Cells	
Three mount kits 1,000 lb to 5,000 lb \$540.00, 10 k-25 k \$588.00 added to list price	
Four mount kits 1,000 lb to 5,000 lb \$720.00, 10 k-25 k \$784.00 added to list price	
Contact factory for a 50,000 lb to 75,000 lb adder for stainless only	

Dimensions

Rated Capacity	C	H	H1	H2	L	L1	L2	L3	T	W	W1	W2	W3
lb/in													
1,000 to 5,000	0.56	5.00	0.50	0.50	9.25	2.75	4.00	6.25	1/2-13 UNC	5.00	3.75	2.75	4.00
10,000 to 25,000	0.78	7.87	0.75	0.75	12.00	6.00	8.00	7.50	3/4-10 UNC	8.00	6.00	6.00	8.00
50,000 to 75,000	0.78	9.25	1.00	1.00	16.25	6.50	9.00	11.50	1 1/4-7 UNC	12.00	9.50	6.50	9.00



WEIGH MODULES

RL1600 Series SS

Stainless Steel Weigh Modules



Fabricated stainless steel module with RL75016SS double-ended beam load cell.

Picture is a representation of actual product.

Load Cell Approvals



Order Information

Load Rating (Per Module)	Part #	Price
Single Module (Does NOT Include Load Cell)		
1,000 lb to 5,000 lb	17813	\$685.00
10,000 lb to 25,000 lb	17815	\$1,345.00
50,000 lb	17842	\$3,185.00
75,000 lb	25347	\$3,185.00
3-Module Kit		
1,000 lb	18141	\$3,820.00
1,500 lb	18142	\$3,820.00
2,000 lb	18143	\$3,820.00
2,500 lb	18144	\$3,820.00
5,000 lb	18145	\$3,820.00
10,000 lb	18146	\$5,830.00
15,000 lb	18147	\$5,830.00
20,000 lb	18148	\$5,830.00
25,000 lb	18149	\$5,830.00
50,000 lb	18150	\$13,255.00
75,000 lb	25352	\$13,255.00
4-Module Kit		
1,000 lb	18152	\$4,988.00
1,500 lb	18153	\$4,988.00
2,000 lb	18154	\$4,988.00
2,500 lb	18155	\$4,988.00
5,000 lb	18156	\$4,988.00
10,000 lb	18157	\$7,959.00
15,000 lb	18158	\$7,959.00
20,000 lb	18159	\$7,959.00
25,000 lb	18160	\$7,959.00
50,000 lb	18161	\$17,895.00
75,000 lb	25353	\$17,895.00

VPG Sensortronics 65016W Order Information

Load Rating (Per Module)	Part #	Price
3-Module Kit		
1,000 lb	18213	\$4,090.00
1,500 lb	18214	\$4,090.00
2,500 lb	18216	\$4,090.00
5,000 lb	18217	\$4,090.00
10,000 lb	18218	\$6,280.00
15,000 lb	18219	\$6,280.00
20,000 lb	18220	\$6,280.00
25,000 lb	18221	\$6,280.00
50,000 lb	18222	\$13,815.00
75,000 lb	25354	\$13,815.00
4-Module Kit		
1,000 lb	18224	\$5,375.00
1,500 lb	18225	\$5,375.00
2,500 lb	18227	\$5,375.00
5,000 lb	18228	\$5,375.00
10,000 lb	18229	\$8,290.00
15,000 lb	18230	\$8,290.00
20,000 lb	18231	\$8,290.00
25,000 lb	18232	\$8,290.00
50,000 lb	18233	\$18,225.00
75,000 lb	25355	\$18,225.00
Dummy Load Cells (Mild Steel)		
1,000 lb to 5,000 lb	18236	\$26.00
10,000 lb to 25,000 lb	18237	\$42.00
50,000 lb	18238	\$56.00

Complete Kit Includes

- One JB4SS NEMA Type 4X stainless steel signal trim junction box
- Three or four RL1600 stainless steel compression mounts
- Three or four RL75016SS stainless steel double-ended shear beam load cells
- 25 ft of hostile environment EL147HE SURVIVOR® load cell cable

Standard Features

- Capacities (per module): 1,000 to 75,000 lb
- 304 stainless steel construction
- Self-checking, easy-to-use design allows module to be bolted directly to tank leg without requiring additional mounting plates or load buttons
- Environmentally protected load cells
- Double-ended shear beam design, center loaded

Optional Features

- Kits available with VPG Sensortronics® 65016W SS load cells

Applications

- Medium- to heavy-capacity tanks, bins and hoppers
- Bulk material management

WEIGH MODULES

Shims, Stainless

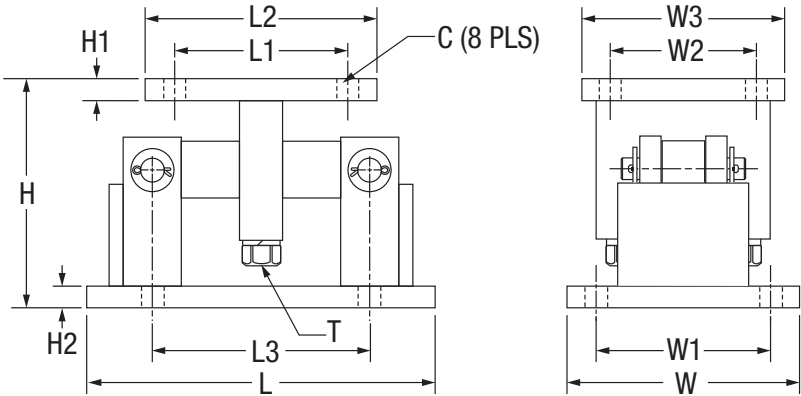
	Part #	Price
1,000 lb to 5,000 lb		
0.0625	150852	\$7.00
0.125	150853	\$12.00
0.250	150854	\$18.00
10,000 lb to 25,000 lb		
0.0625	150855	\$19.00
0.125	150856	\$30.00
0.250	150857	\$65.00
50,000 lb to 75,000 lb		
0.0625	150858	\$27.00
0.125	150859	\$38.00
0.250	150861	\$79.00

RL1600 Series SS

Stainless Steel Weigh Modules

Dimensions

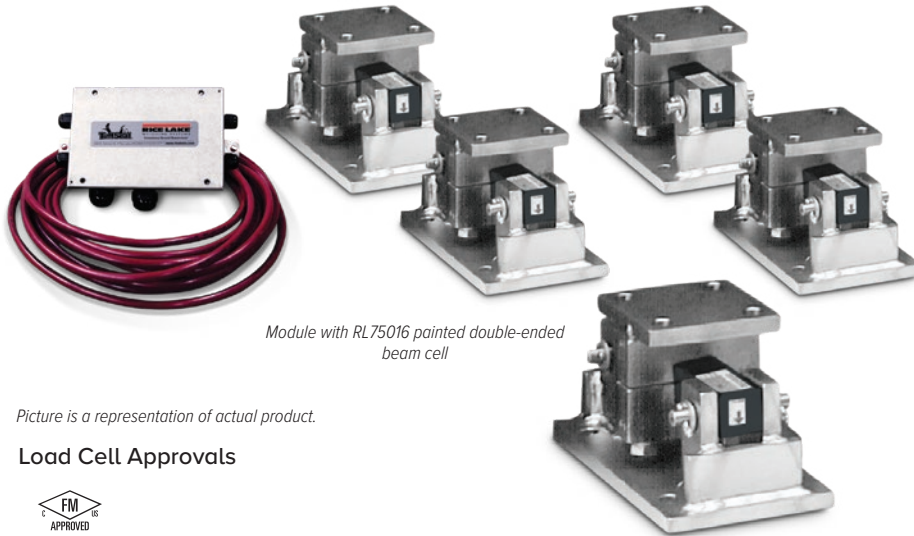
Rated Capacity	C	H	H1	H2	L	L1	L2	L3	T	W	W1	W2	W3
lb/in													
1,000 to 5,000	0.56	5.00	0.50	0.50	9.25	2.75	4.00	6.25	1/2-13 UNC	5.00	3.75	2.75	4.00
10,000 to 25,000	0.78	7.87	0.75	0.75	12.00	6.00	8.00	7.50	3/4-10 UNC	8.00	6.00	6.00	8.00
50,000 to 75,000	0.78	9.25	1.00	1.00	16.25	6.50	9.00	11.50	1 1/4-7 UNC	12.00	9.50	6.50	9.00



WEIGH MODULES

RL1600 Series Painted Load Cell Version

Stainless Steel Weigh Modules



Module with RL75016 painted double-ended beam cell

Picture is a representation of actual product.

Load Cell Approvals



Order Information

Load Rating (Per Module)	Part #	Price
Single Module (Does NOT Include Load Cell)		
1,000 lb to 5,000 lb	17813	\$685.00
10,000 lb to 25,000 lb	17815	\$1,345.00
50,000 lb	17842	\$3,185.00
75,000 lb	25347	\$3,185.00
3-Module Kit		
1,000 lb	199023	\$3,820.00
1,500 lb	199025	\$3,820.00
2,000 lb	199027	\$3,820.00
2,500 lb	199029	\$3,820.00
3,000 lb	199031	\$3,820.00
5,000 lb	199033	\$3,820.00
10,000 lb	199035	\$5,830.00
15,000 lb	199037	\$5,830.00
20,000 lb	199038	\$5,830.00
25,000 lb	199040	\$5,830.00
50,000 lb	199042	\$13,255.00
75,000 lb	199044	\$13,255.00
4-Module Kit		
1,000 lb	199024	\$4,985.00
1,500 lb	199026	\$4,985.00
2,000 lb	199028	\$4,985.00
2,500 lb	199030	\$4,985.00
3,000 lb	199032	\$4,985.00
5,000 lb	199034	\$4,985.00
10,000 lb	199036	\$7,955.00
15,000 lb	199056	\$7,955.00
20,000 lb	199039	\$7,955.00
25,000 lb	199041	\$7,955.00
50,000 lb	199043	\$17,895.00
75,000 lb	199045	\$17,895.00

Dimensions

Rated Capacity	C	H	H1	H2	L	L1	L2	L3	T	W	W1	W2	W3
lb/in													
1,000 to 5,000	0.56	5.00	0.50	0.50	9.25	2.75	4.00	6.25	1/2-13 UNC	5.00	3.75	2.75	4.00
10,000 to 25,000	0.78	7.87	0.75	0.75	12.00	6.00	8.00	7.50	3/4-10 UNC	8.00	6.00	6.00	8.00
50,000 to 75,000	0.78	9.25	1.00	1.00	16.25	6.50	9.00	11.50	1 1/4-7 UNC	12.00	9.50	6.50	9.00

Complete Kit Includes

- One JB4SS NEMA Type 4X stainless steel signal trim junction box
- Three or four RL1600 stainless steel compression mounts
- Three or four RL75016 painted alloy steel double ended shear beam load cells
- 25 ft of hostile environment EL147HE SURVIVOR® load cell cable

Standard Features:

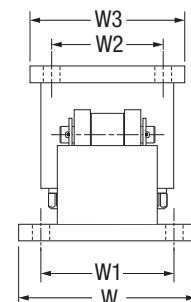
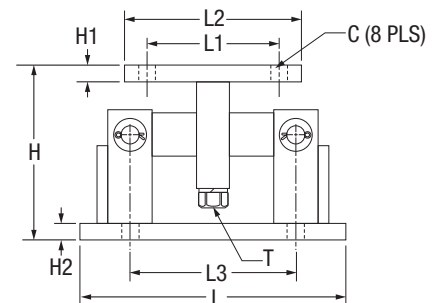
- Capacities (per module): 1,000 to 75,000 lb
- Self-checking, easy-to-use design allows module to be bolted directly to tank leg without requiring additional mounting plates or load buttons
- Environmentally protected load cells
- Double-ended shear beam design, center loaded

Applications

- Medium-to heavy-capacity tanks, bins and hoppers
- Bulk material management

Shims, Stainless

	Part #	Price
1,000 lb to 5,000 lb		
0.0625	150852	\$7.00
0.125	150853	\$12.00
0.250	150854	\$18.00
10,000 lb to 25,000 lb		
0.0625	150855	\$19.00
0.125	150856	\$30.00
0.250	150857	\$65.00
50,000 lb to 75,000 lb		
0.0625	150858	\$27.00
0.125	150859	\$38.00
0.250	150861	\$79.00



WEIGH MODULES

MVS Mount/MVS

Conversion Kit



Picture is a representation of actual product.

Load Cell Approvals



Order Information

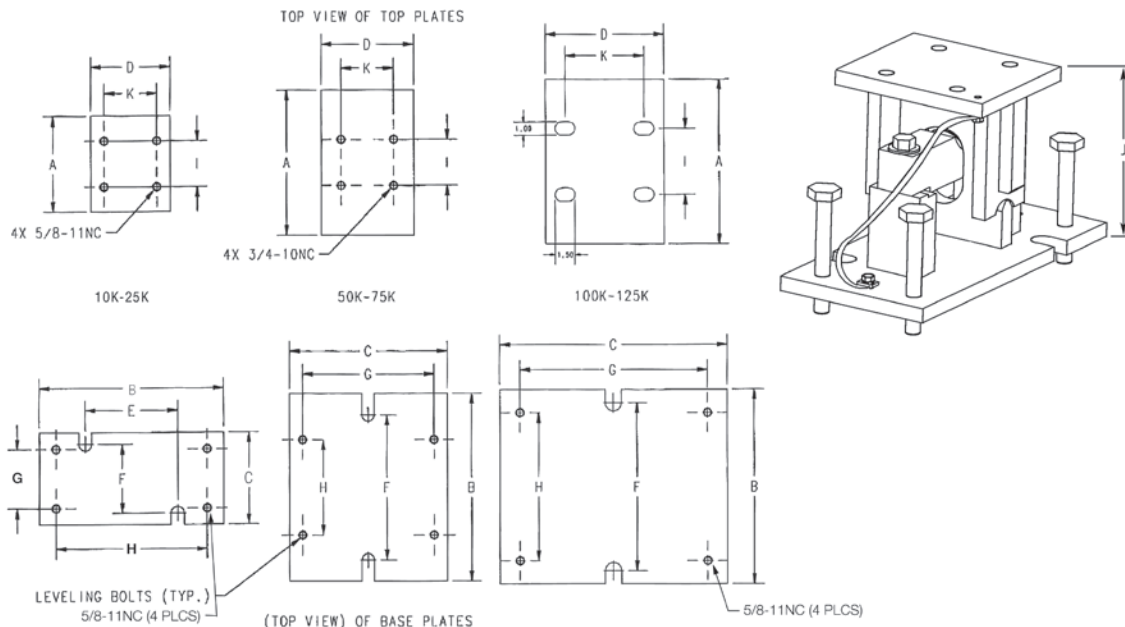
Load Rating (Per Module)	Part #	Price
MVS Mount (Does NOT Include Load Cell)		
10,000 lb to 25,000 lb	71200	\$725.00
50,000 lb to 75,000 lb	46441	\$865.00
100,000 lb to 125,000 lb	68520	\$1,475.00
MVS Conversion Kits (Includes 75,000 lb* Load Cells, Mounts and Junction Box)		
4-module kit	68495	\$7,505.00
6-module kit	68496	\$11,050.00
8-module kit	68497	\$15,020.00
10-module kit	68498	\$19,465.00
Dummy Load Cell		
50,000 lb to 75,000 lb	169388	\$175.00
100,000 lb to 125,000 lb	159696	\$212.00

Custom heights available; Consult

* Consult for other capacity requirements

Dimensions

Rated Capacity	A	B	C	D	E	F	G	H	I	J	K
lb/in											
10,000 to 25,000	7.25	14.00	7.00	6.00	7.00	5.25	4.50	11.50	3.50	8.50	4.00
50,000 to 75,000	11.00	14.25	12.00	7.00	—	11.00	10.00	7.25	3.50	11.53	4.00
100,000 to 125,000	12.50	14.75	17.25	9.00	—	12.75	14.25	11.25	5.00	14.21	6.00



Complete Kit Includes

- 4 to 10 RL75058-LP 75,000 lb load cells with 35 ft or 60 ft cables
- 4 to 10 MVS mounts
- JB8SPT junction box (JB1010 on 10 module kit)
- 100 ft of our hostile environment EL147HE SURVIVOR® load cell cable

Standard Features

- Capacity design: 10,000 to 125,000 lb
- Mild steel construction
- Specially hardened center link
- Self-checking design
- Self-centering design
- Accommodates thermal expansion and contraction

Optional Features

- VPG Sensortronics® 65058 or VPG Celtron® CLB

Applications

- Truck scale conversion
- Heavy-capacity horizontal tanks

Translink™ Parallel Link

Truck Scale Assembly, Rice Lake Weighing Systems



Mount only; does not include load cell.
Picture is a representation of actual product.

Standard Features

- Capacities: 25,000 to 100,000 lb
- Center-supported, end-loaded double-ended shear beam design
- Free movement in all directions in the horizontal plane with virtually no friction
- Links provide optimal loading conditions for the cell
- Completely self-centering
- Requires no check rods
- Utilizes cells with 3 mV/V output
- Models available are RL75223 and RL75040, VPG Revere® 5223 and VPG Sensortronics® 65040A load cells

Applications

- Truck scale mount
- Heavy-capacity horizontal tanks

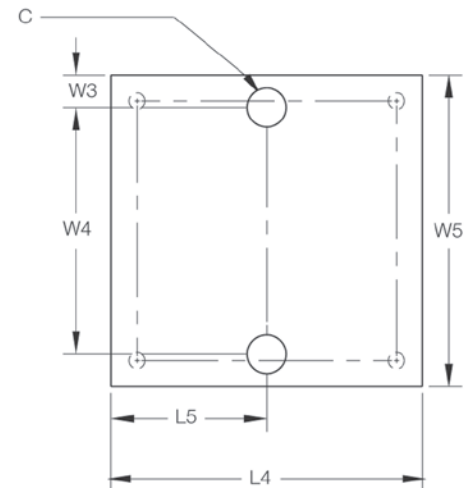
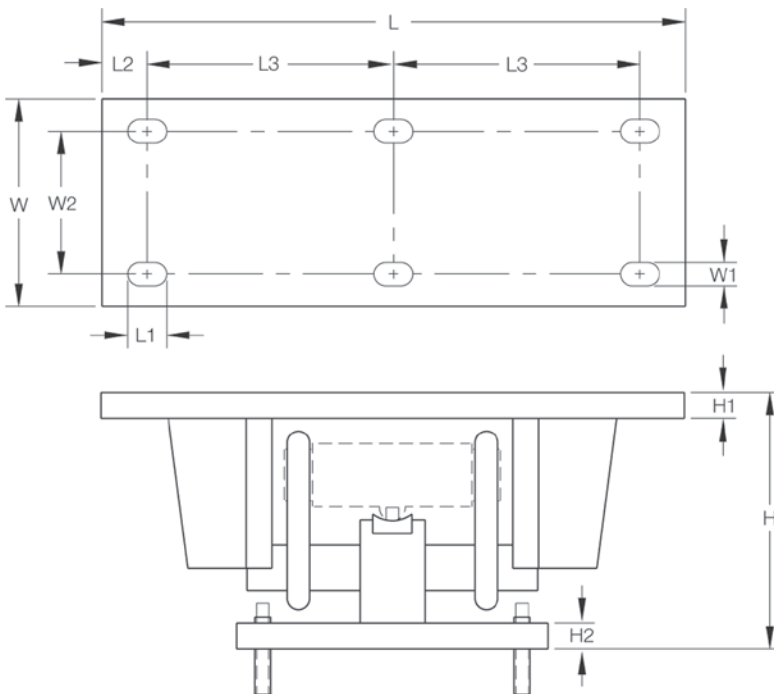
Order Information

Load Rating (Per Module)	Part #	Price
For Use With RL75223, 5223 Load Cells		
50,000 lb to 100,000 lb	17970	\$885.00
For Use With RL75040, 65040A Load Cells		
25,000 lb to 40,000 lb	17971	\$885.00
50,000 lb to 75,000 lb	17972	\$885.00

Mount only; does not include load cell

Dimensions

Rated Capacity lb/in	C	H	H1	H2	L	L1	L2	L3	L4	L5	W	W1	W2	W3	W4	W5
50,000 to 100,000 (RL75223, 5223)	1.50	12.93	1.00	1.00	22.50	1.50	1.75	9.50	11.75	5.88	7.75	0.91	5.25	1.25	9.25	11.75
25,000 to 40,000 (RL75040, 65040A)	1.50	9.88	1.00	1.00	18.50	1.50	1.75	7.50	11.75	5.88	7.75	0.91	5.25	1.25	9.25	11.75
50,000 to 75,000 (RL75040, 65040A)	1.50	12.82	1.00	1.00	22.50	1.50	1.75	9.50	11.75	5.88	7.75	0.91	5.25	1.25	9.25	11.75



WEIGH MODULES

Motor Truck Scale Electronic Conversion Kit

Rice Lake Weighing Systems



Picture is a representation of actual product.

Order Information

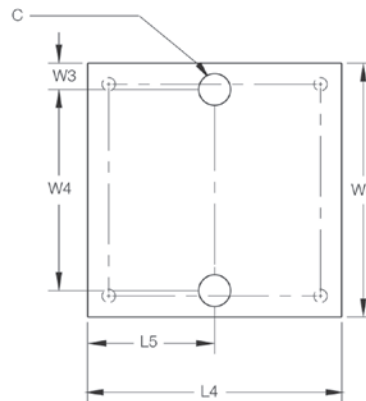
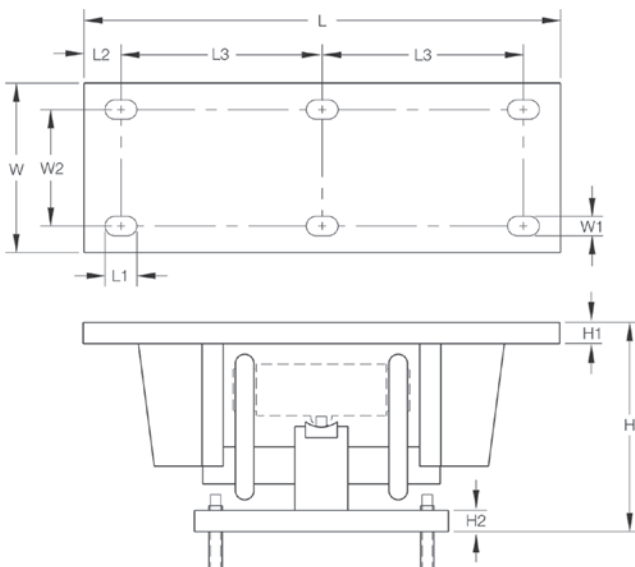
Scale Suggested Capacity	Load Cell Capacity (Per Module)	Part #	Load Cell Used In Kit	Price
4-Module Kit (Includes Weigh Modules Load Cells, Junction Box, and Transient Protection)				
40,000 lb	25,000 lb	30513	RL75040	\$6,324.00
60,000 lb	40,000 lb	30514	RL75040	\$6,854.00
6-Module Kit (Includes Weigh Modules Load Cells, Junction Box and Transient Protection)				
100,000 lb	50,000 lb	30515	RL75040	\$10,765.00
120,000 lb	60,000 lb	30516	RL75040	\$10,765.00
8-Module Kit (Includes Weigh Modules Load Cells, Junction Box and Transient Protection)				
120,000 lb	60,000 lb	30517	RL75040	\$13,899.00
200,000 lb	75,000 lb	30518	RL75040	\$13,899.00
300,000 lb	100,000 lb	30512	RL75223	\$16,787.00

SD refers to super duty, 100,000 lb capacity welded-seal load cells

Dimensions

Rated Capacity	C	H*	H1	H2	L	L1	L2	L3	L4	L5	W	W1	W2	W3	W4**	W5
lb/in																
50,000 to 100,000 (RL75223)	1.50	12.93	1.00	1.00	22.50	1.50	1.75	9.50	11.75	5.88	7.75	0.91	5.25	1.25	9.25	11.75
25,000 to 40,000 (RL75040)	1.50	9.88	1.00	1.00	18.50	1.50	1.75	7.50	11.75	5.88	7.75	0.91	5.25	1.25	9.25	11.75
50,000 to 75,000 (RL75040)	1.50	12.82	1.00	1.00	22.50	1.50	1.75	9.50	11.75	5.88	7.75	0.91	5.25	1.25	9.25	11.75

*Custom heights available; consult **Custom hole spacing for existing bolt patterns is available; consult



Complete Kit Includes

- One JB8SP NEMA Type 4X signal-trim junction box with individual and section trimming capability (six- and eight-mount kits) or one JB4SP NEMA Type 4X signal-trim junction box (four-mount kits)
- One UJB3T6 DC transient protector
- Four, six or eight Translink mounting assemblies with RL75040 or RL75223 load cells
- 100 ft of hostile environment EL147HE SURVIVOR® load cell cable

Standard Features

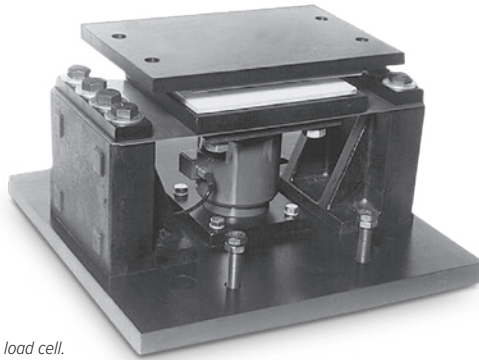
- Cost and time efficient installation; no need to remove weighbridge
- Converts existing scale capacities of 40,000 to 300,000 lb
- Four, six or eight-mount kits for two, three or four section conversions
- Translink™ heavy-capacity mounting assemblies
- Free movement in all directions in the horizontal plane with virtually no friction
- Completely self-centering
- Requires no check rods
- Capacity per mount: 25,000 to 100,000 lb
- Utilizes cells with 3 mV/V output

Optional Features

- Custom heights available; consult
- Rice Lake RL75223 welded-seal, VPG Sensortronics® 65040A or VPG Revere® 5223 load cells

Applications

- Updating existing mechanical motor truck scales
- Replacing unsatisfactory electronic motor truck scales
- Conversion of heavy-capacity scales into fully electronic vehicle scales where the existing scale cannot be removed



Mount only; does not include load cell.
Picture is a representation of actual product.

Standard Features

- Capacities: 50,000 lb, 100,000 lb and 200,000 lb
- Protects load cell from shock and side loads
- Low-profile design
- High-strength load bearing plate made of high-grade carbon steel hardened to Rockwell C 48-54
- PTFE-coated shock absorbing pads
- Compatible with VPG® Revere CP and CSP and Rice Lake Weighing Systems' RLCSP1NTEP Certified load cells

Applications

- Truck scale mount*
- Heavy-capacity horizontal tanks*
- Railroad track mount*

*Check rods required

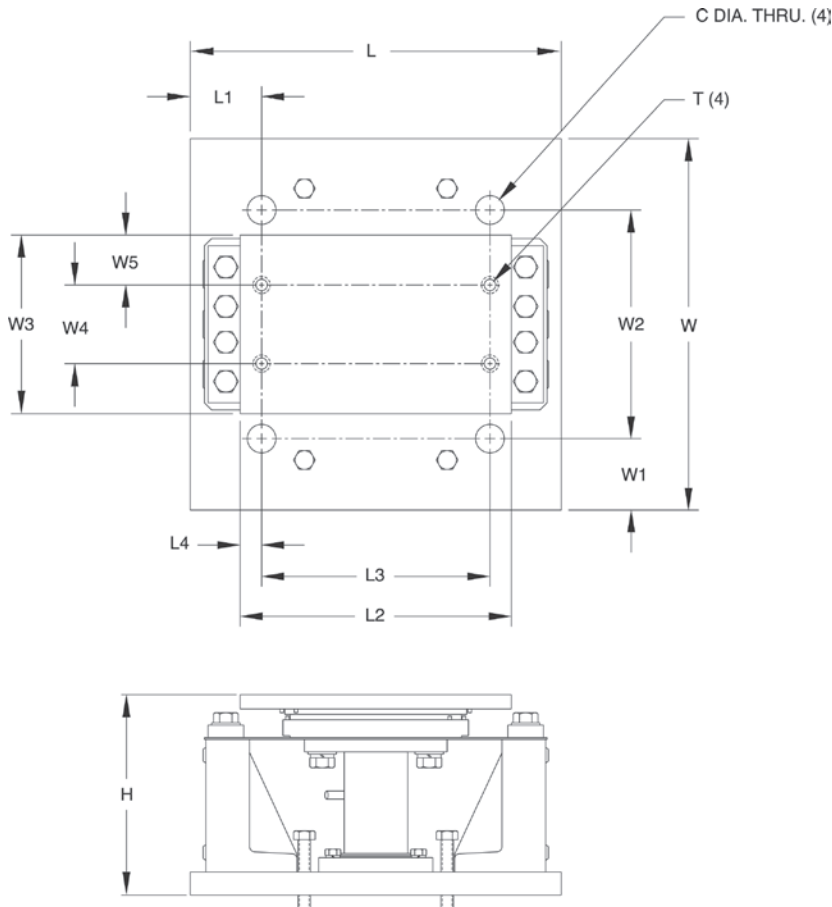
Order Information

Load Rating (Per Module)	Part #	Price
50,000 lb	21723	\$2,225.00
100,000 lb	21724	\$2,650.00
200,000 lb	17974	\$4,595.00

Mount only; does not include load cell

Dimensions

Rated Capacity	C	H	L	L1	L2	L3	L4	T	W	W1	W2	W3	W4	W5
lb/in														
50,000	1.25	7.39	13.00	1.75	11.25	8.50	1.37	3/4-10 UNC	12.00	1.75	8.50	8.00	4.50	1.75
100,000	1.50	11.29	20.00	2.25	18.00	15.50	1.25	7/8-9 UNC	17.00	2.50	12.00	9.00	5.50	1.75
200,000	2.00	14.10	26.00	5.00	19.00	16.00	1.50	1-8 UNC	26.00	5.00	16.00	12.50	5.50	3.50



Mettler Toledo® DigiTOL® Retrofit Kit

Stainless Steel, Rice Lake Weighing Systems/Flintec

RC1 Load Cells



Shown here with the JB8SP signal trim junction box.
Picture is a representation of actual product.

Load Cell Approvals



DigiTOL Retrofit Order information

Description	Part #	Price
8 mount kit (RC1-56,000) 1 JB8SP junction box	78713	\$9,485.00
10 mount kit (RC1-56,000) 2 JB8SP junction boxes	78714	\$11,535.00
12 mount kit (RC1-56,000) 3 EL304 junction boxes	152774	\$14,225.00

Complete Kit Includes

- Signal trim EL204 or JB8SP junction boxes
- 8, 10 or 12 Flintec RC1-250 KN load cells with upper and lower load cups
- 8, 10 or 12 Flintec RC3 load cells with upper and lower load cups
- 100 ft of hostile environment EL147HE SURVIVOR® load cell cable
- Cups included

Standard Features

- Stainless steel hermetically sealed load cells
- Converts existing Mettler -Toledo DigiTOL scale to an analog based load cell weighing system
- 8, 10 or 12 load cells and cups plus junction box and home run cable
- Load cells are NTEP Certified 1:10,000 divisions, Class IIII*
- Rocker design load cells
- Load cups

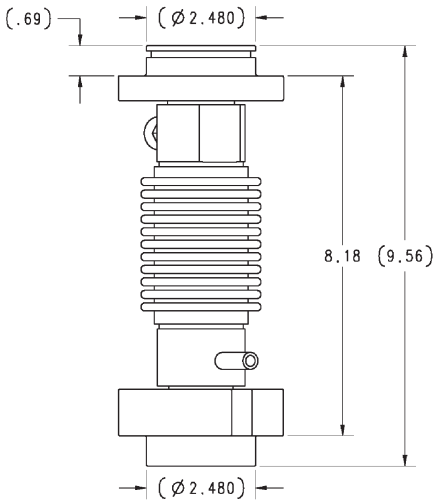
*Consult your local Weights & Measures Authorities for local Legal for Trade requirements

Warranty

- One-year limited

Applications

- Mettler Toledo® DigiTOL® truck scale conversion



RC1-250KN

WEIGH MODULES

Mettler Toledo® DigiTOL® Retrofit Kit

Stainless Steel, Rice Lake Weighing Systems/Flintec

RC3 Load Cells



Shown here with the JB8SP signal trim junction box
Picture is a representation of actual product

Load Cell Approvals



DigiTOL Retrofit Order information

Description	Part #	Price
8 mount kit (RC3-50T) RR/track 2 EL304 junction boxes	129844	\$12,995.00
8 mount kit (RC3-50T) truck 2 EL304 junction boxes	154347	\$12,995.00
10 mount kit (RC3-50T) RR/track 2 JB8SP junction boxes	111367	\$16,100.00
10 mount kit (RC3-50T) truck 3 EL304 junction boxes	154348	\$16,100.00
12 mount kit (RC3-50T) truck 3 EL304 junction boxes	154349	\$19,295.00

Complete Kit Includes

- Signal trim EL204 or JB8SP junction boxes
- 8, 10 or 12 Flintec RC1-250 KN load cells with upper and lower load cups
- 8, 10 or 12 Flintec RC3 load cells with upper and lower load cups
- 100 ft of hostile environment EL147HE SURVIVOR® load cell cable
- Cups included

Standard Features

- Stainless steel hermetically sealed load cells
- Converts existing Mettler-Toledo DigiTOL scale to an analog based load cell weighing system
- 8, 10 or 12 load cells and cups plus junction box and home run cable
- Load cells are NTEP Certified 1:10,000 divisions, Class IIII*
- Rocker design load cells
- Load cups

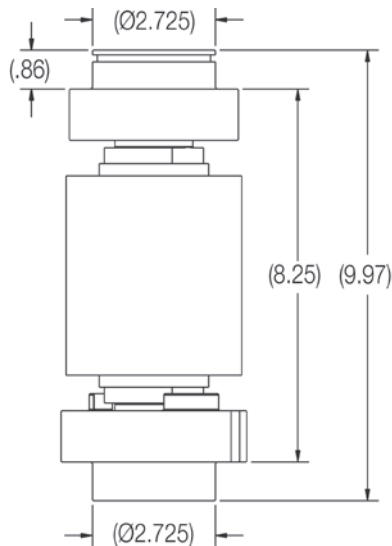
*Consult your local Weights & Measures Authorities for local Legal for Trade requirements

Warranty

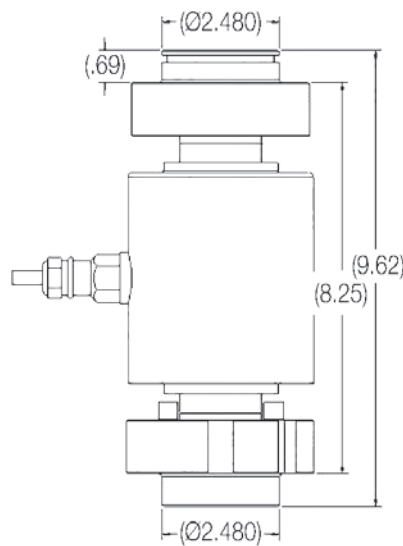
- One-year limited

Applications

- Mettler Toledo® DigiTOL® truck scale conversion



RC3-50t
RR TRACK



RC3-50t
TRUCK

WEIGH MODULES

B-TEK Digital Retrofit Kit

Stainless Steel, Rice Lake Weighing Systems

RL82021-40t Load Cells



Shown here with the EL304A signal trim junction box.
Picture is a representation of actual product.

Load Cell Approvals



Digital Retrofit Order information

Description	Part #	Price
8 mount kit (RC1-56,000) 2 EL304A junction boxes	216423	\$7,795.00
10 mount kit (RC1-56,000) 3 EL304A junction boxes	216424	\$9,875.00

Complete Kit Includes

- Signal trim EL304A junction boxes
- 8 or 10 RL82021-40t load cells with upper and lower load cups
- 100 ft of hostile environment EL147HE SURVIVOR® load cell cable
- Cups included

Standard Features

- Stainless steel hermetically sealed load cells with overbraid
- Cable end built in surge protection
- 8 or 10 load cells and cups plus junction box and home run cable
- Load cells are NTEP Certified 1:10,000 divisions, Class IIII*
- Rocker design load cells
- Load cups
- Converts B-TEK digital CPD-M scales to analog

**Consult your local Weights & Measures Authorities for local Legal for Trade requirements*

Warranty

- Two-year limited

Applications

- B-TEK digital truck scale conversion

Electronic Floor Scale Underdeck Kits



Underdeck kits are provided to meet the application needs of the electronic floor scale producer and are an easy source for rebuilding existing floor scales. Underdeck kits are provided with mounting plates and load cell bolts for easy installation.

Economical Kit

Kit Includes

- (4) VPG® Celtron SQB alloy steel NTEP Certified 5,000 d, Class III load cells
- (1) JB4SS stainless steel NEMA Type 4X junction box
- (4) SureFoot® high-accuracy stainless steel support feet
- 20 ft EL147HE load cell cable
- (4) mounting plates and (8) load cell bolts

Order Information

Scale Base Capacity	Part #	Price
1,000 lb for 2,000 lb base	26436	\$980.00
2,500 lb for 5,000 lb base	26437	\$980.00
4,000 lb for 10,000 lb base	26438	\$980.00

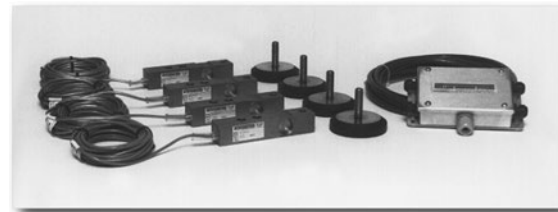
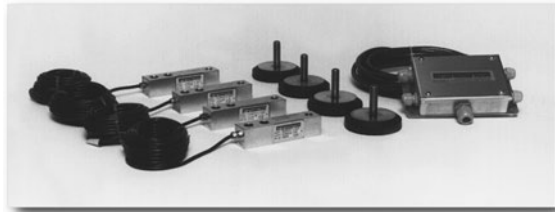
Chemical, Dry Corrosive & Non-Washdown Applications Kit

Kit Includes

- (4) VPG® Celtron SQB-HSS stainless steel NTEP Certified 5,000 d, Class III load cells
- (1) JB4SS stainless steel NEMA Type 4X junction box
- (4) SureFoot® high-accuracy stainless steel support feet
- 20 ft EL147HE load cell cable
- (4) mounting plates and (8) load cell bolts

Order Information

Scale Base Capacity	Part #	Price
1,000 lb for 2,000 lb base	19035	\$1,378.00
2,500 lb for 5,000 lb base	19036	\$1,378.00
4,000 lb for 10,000 lb base	19037	\$1,378.00



Standard Precision Applications Kit

Kit Includes

- (4) Rice Lake RL32018 alloy steel NTEP Certified 5,000 d, Class III load cells
- (1) JB4SS stainless steel NEMA Type 4X junction box
- (4) SureFoot high-accuracy stainless steel support feet
- 20 ft EL147HE load cell cable
- (4) mounting plates and (8) load cell bolts

NOTES: The use of NTEP Certified load cells in a scale base does not constitute approval of the completed base. Consult with local or state jurisdiction for compliance requirements.

Order Information

Scale Base Capacity	Part #	Price
1,000 lb for 2,000 lb base	19032	\$1,060.00
2,500 lb for 5,000 lb base	19033	\$1,060.00
4,000 lb for 10,000 lb base	19034	\$1,060.00

Wet Applications Kit

Kit Includes

- (4) Rice Lake RL32018S-HE welded-seal stainless steel NTEP Certified 5,000 d, Class III load cells
- (1) JB4SS stainless steel NEMA Type 4X junction box
- (4) SureFoot® high-accuracy stainless steel support feet
- 20 ft EL147HE load cell cable
- (4) mounting plates and (8) load cell bolts

Order Information

Scale Base Capacity	Part #	Price
1,000 lb for 2,000 lb base	19038	\$1,706.00
2,500 lb for 5,000 lb base	19039	\$1,706.00
4,000 lb for 10,000 lb base	19040	\$1,706.00

