

Rice Lake Weighing Systems

TABLE OF CONTENTS

S-BEAMS

Page 96

RL20000I, ALLOY STEEL



Ideally suited for scale conversions and general-purpose weighing. Compact and rugged design. Capacities range from 25 to 20,000 lb, with cable lengths available in 20, 30 or 35 ft, depending on the module.



Page 97

RL20000SS, STAINLESS STEEL



For suspended applications or mechanical scale conversions, this model provides the additional protection of stainless steel necessary in dry, corrosive environments. Available in capacities ranging from 50 to 20,000 lb with 20 ft of load cell cable.



Page 98

RL20000ST, STAINLESS STEEL



Ideally suited for suspended applications or mechanical scale conversions. The stainless steel design provides additional protection in dry, corrosive environments. The extremely miniature envelope is suitable for a wide variety of weighing applications in tension or compression. Capacities available from 50 to 5,000 lb, each comes with 20 ft of polyurethane cable.



Page 99

RL20001I, ALLOY STEEL



Suited for scale conversions, tension applications and general-purpose weighing. Compact and rugged design. Capacities range from 250 to 20,000 lb. Complete with 20 ft of load cell cable.



Page 100

RL20001HE, STAINLESS STEEL



A full stainless steel, welded-seal, S-beam featured in our ITCM HE products, and it is ideal for the harshest tension mounting applications. NTEP Certified capacities range from 500 to 5,000 lb; non-NTEP Certified capacity of 10,000 lb. Complete with 20 ft of load cell cable



Page 101

RLETS, ALLOY STEEL



Ideally suited for scale conversions and general-purpose weighing. OIML approved and metric envelope capacities range from 250 to 2,500 kg. Complete with 6 m of load cell cable.



SINGLE-ENDED BEAMS

Page 102

RL32022, ALLOY STEEL



The RL32022 is a metric version of the RL32018 load cell. Constructed of alloy steel and sealed to IP67 standards. OIML approved capacities range from 300 to 2,000 kg. Complete with 5 m of load cell cable.



SINGLE-ENDED BEAM
RL30000I

Alloy Steel, Environmentally Sealed, NTEP Certified 1:5,000 IIIIL Class III Multiple Cell, IP67



Picture is a representation of actual product.

Approvals



Order Information

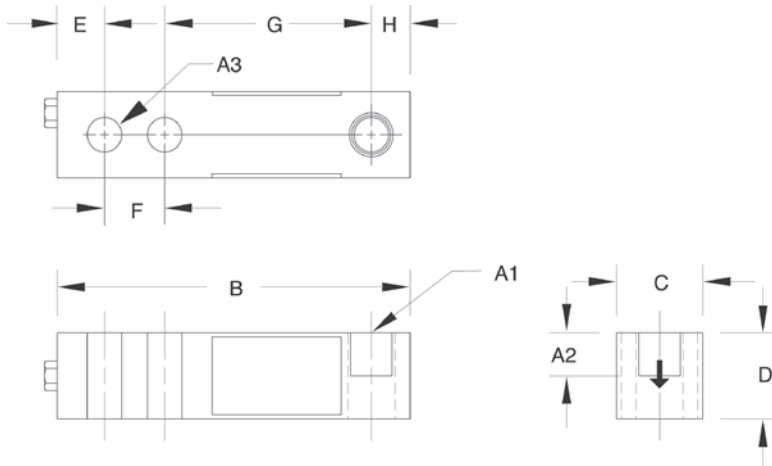
Load Rating	Part #	Est. Weight	Price
NTEP Certified			
1,000 lb	21491	3 lb	Consult
2,000 lb	21493	3 lb	Consult
2,500 lb	21495	3 lb	Consult
3,000 lb	21497	3 lb	Consult
4,000 lb	21498	3 lb	Consult
5,000 lb SE	21500	3 lb	Consult
5,000 lb LE	21501	5 lb	Consult
10,000 lb	21503	5 lb	Consult
Non-NTEP Certified			
250 lb	17341	3 lb	Consult
500 lb	17342	3 lb	Consult
20,000 lb	17109	10 lb	Consult
Conduit Adapter Kit (must be factory installed to maintain warranty)			
3/8-24 nipple	31533*	1 lb	Consult
3/8-24 to 1/4-18 NPT	31534*	1 lb	Consult

SE=small envelope; LE=large envelope

* PN 31533 and PN 31534 must be installed together to form the Conduit Adapter Kit

Dimensions

Rated Capacity	A1	A2	A3	B	C	D	E	F	G	H
250 to 5,000 SE	1/2-20 UNF	0.60	0.53	5.12	1.25	1.25	0.62	1.00	3.00	0.50
5,000 LE to 10,000	3/4-16 UNF	0.75	0.78	6.75	1.50	1.50	0.75	1.50	3.75	0.75
20,000	1-14 UNF	1.00	1.03	8.75	2.00	2.00	1.00	2.00	4.75	1.00



Interchangeable Products

- VPG® REVERE
5123..... page 248
- VPG® TEDEA-HUNTLEIGH®
3411..... page 308
- ARTECH®
30310

Weigh Module Available

- RICE LAKE WEIGHING SYSTEMS
RL50210TA..... page 39
- RICE LAKE WEIGHING SYSTEMS
RL1800 Series..... page 50

Specifications

- Full Scale Output:**
3.0 mV/V
- Output Resistance:**
350 ± 3 ohm
- Input Resistance:**
385 ± 5 ohm
- Material/Finish:**
High-alloy steel, nickel plated
- Temperature:**
Compensated:
14 °F to 104 °F (-10 °C to 40 °C)
Operating:
0 °F to 150 °F (-18 °C to 65 °C)
- Seal Type:**
Environmentally sealed, IP67
- Safe Overload:**
150% full scale
- Safe Sideload:**
100% full scale
- Rated Excitation:**
5 to 10 VAC (15 V maximum)
- Combined Error:**
0.02% full scale
- Insulation Resistance:**
5,000 megohm
- Deflection at Capacity:**
250 to 1,000 lb: 0.013 in
2,000 to 3,000 lb: 0.015 in
4,000 to 5,000 lb: 0.025 in
10,000 lb: 0.032 in
20,000 lb: 0.038 in
- Cable Length:**
20 ft
- Cable Diameter:**
0.200 in
Polyurethane jacket
- Cable Color Code:**
Red +Excitation
Black -Excitation
Green +Signal
White -Signal
- Warranty:**
Two-year limited
- Approvals:**
NTEP 98-043
cFMus

RICE LAKE
LOAD CELLS