

# Software Traceability Systems

## TABLE OF CONTENTS

**VIRTUI2®** ..... **928**  
*PC-Based HMI for iQUBE2®*

**INTERCHANGE** ..... **929**  
*920i/1280 Database Management Software*

**ONTRAK®** ..... **930**  
*Truck Data Management Software*

**TRANSACT® LE/TRANSACT/  
TRANSACT PLUS** ..... **932**  
*Truck Data Management Software*

**WEIGHVAULT®** ..... **934**

**WINWEDGE® TAL SOFTWARE** ..... **935**  
*Wedge Software*

Product names, logos, brands, and other trademarks featured or referred to within this publication are the property of their respective trademark holders.

# VIRTUi2®

PC-Based HMI for iQUBE2®



## Specifications

### Minimum System Requirements:

Windows® 8.1 and newer

### Serial port

USB to serial converter, or Ethernet TCP/IP for connection to iQUBE<sup>2</sup>

Additional serial ports are required for connections to printers/remote displays

### Status Annunciators:

Units (lb, kg, short tons (tn), metric tons (t), NONE) gross/net, motion, center of zero

### Approvals:

NTEP CC 04-058 Classes III and IIIIL at 10,000d

VIRTUi2 is a Windows®-based desktop application that works with iQUBE<sup>2</sup> to replicate simple indicator functionality ideal for system integrators and OEMs wanting to provide a PC-based solution. Load cells are individually monitored and calibrated, making setup easy.

## Standard Features

- Virtual front panel consists of display and five-button keypad
- Web browser-based iQUBE<sup>2</sup> cell status
- Provides local and remote reporting of diagnostics and error conditions
- Up to four scale and one total scale
- Primary/secondary units configuration (lb, kg, short tons, metric tons, none)
- RS-232 communications at up to 460 Kbps
- Electronic Data Processing (EDP) port over RS-232 and TCP/IP
- Printer port for output-only, simplex communications
- Two print formats
- Provides iQUBE<sup>2</sup> configuration screen and iQUBE<sup>2</sup> digital I/O configuration
- Supports iQUBE<sup>2</sup> diagnostics with configurable error viewing
- Peak weight history
- Recalibration notification
- Concentrated load capacity (CLC)
- Section capacity

## Approvals

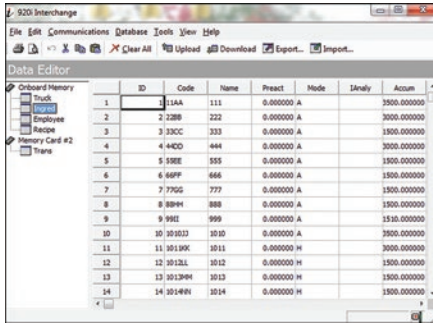


## Part Number/Price

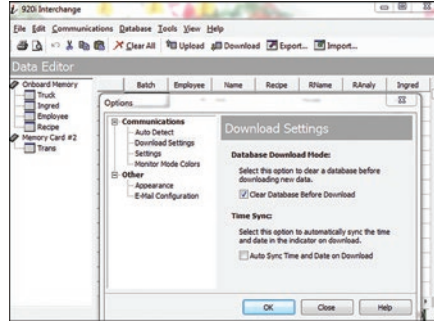
Part #	Description	Price
108435	Virtual Indicator demo CD	N/A
108436	Activation part number - requires machine ID and customer's email address	\$500.00

# Interchange

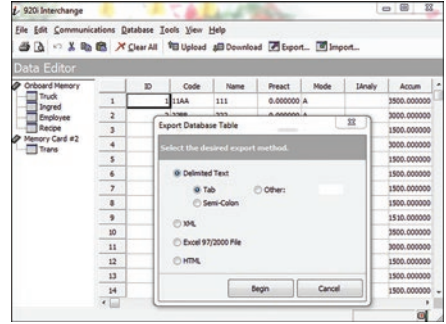
## 920i®/1280 Database Management Software



Database Editor



Communication Settings for Download



Export or Import Data

### Specifications

**Minimum System Requirements:**  
Windows® 7 or newer

Interchange database management software is used to setup a custom job file for each database you need to export. Manually or automatically run the job file by setting a predetermined time using Windows® Task Scheduler.

### Standard Features

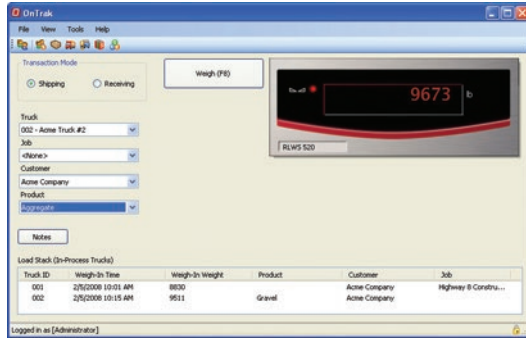
- Edit and Manage Databases
- Setup using an export job wizard
- Connect using RS-232, RS-485 or Ethernet TCP/IP
- Program will connect to the indicator and upload the current database structure
- Select the desired database
- Export database table file types: delimited text, XML, XLS, HTML

### Part Number/Price

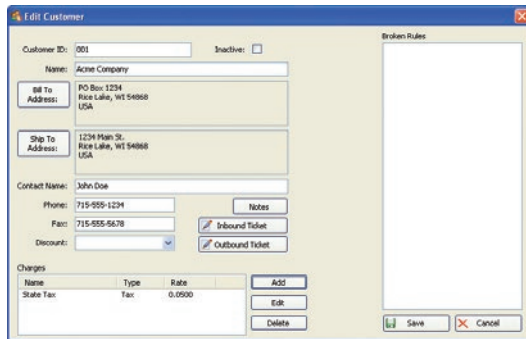
Part #	Description	Price
72809	Interchange database software	\$295.00

# OnTrak<sup>®</sup>

TRUCK SCALE DATA MANAGEMENT



Weigh Scale



Customer Account Information

## Specifications

### System Requirements:

Windows<sup>®</sup> 7 and newer (x64 systems)

### Databases:

10 GB max database size when using the included Microsoft SQL Server Express edition. Unlimited database size when using a purchased edition (contact Microsoft for details on purchasing a licensed edition of SQL Server)

### Communications:

Support for multiple printers  
Supports all Rice Lake indicator interfaces  
Supports VIRTUi/VIRTUi2 interface  
920i-based Automating Ticketing Kiosks  
Optional Drivers available for non-Rice Lake weight indicators

### Transaction Ticket:

User defined ticket formatting

### Reports:

Comprehensive report filters  
Optional custom reports

### Export Data:

File transfer via XML transaction; exported reports can be saved as PDF/XLS; configurable transaction data export in .csv file format

### Transaction Calculations:

Unlimited product prices and discounts  
Tax calculations (does not integrate directly to financial software)

### Software Support:

Database configuration, field installation and training available  
Phone support packages available  
Contact Rice Lake for further options

### Approvals:

NTEP CC 05-107w

## Standard Features

- Supports systems using Windows<sup>®</sup> 7 and newer
- Microsoft SQL Server Express client/server database (free edition)
- Comprehensive report filters
- User and administrator roles
- Backup and restore supported via SQL Server Management Studio freely available through Microsoft
- Unlimited charge/discount per product
- Ship or Receive mode for each transaction
- Exclusive database for: customer, hauler, truck, product, job, price/discount, tax, transaction
- Ethernet TCP/IP or RS-232 connectivity
- Supports VIRTUi/VIRTUi2<sup>®</sup> or Rice Lake weight indicators
- .CSV transaction file export
- Supports one or two scales

## Optional Features

- Image capture with Ethernet camera TCP/IP (requires SQL Server Standard or better through Microsoft)
- Interface to non-Rice Lake weight indicators
- Custom reports
- Database configuration
- Field installation and training
- Factory phone support

## Approvals



### Part Numbers/Price

Part #	Description	Price
104787	OnTrak activation code	\$1,395.00
101062	OnTrak CD/ROM	\$84.00

OnTrak trial at [www.ricelake.com/ontrak](http://www.ricelake.com/ontrak)

### Options/Accessories

Part #	Description	Price
Consult	Non-Rice Lake indicator interface	\$195.00
Consult	Custom reports	\$95.00/hour
Consult	Database configuration	\$95.00/hour
FLD-INSTALL	Field installation	\$1,395.00/ weekday plus expenses
104789	Phone support, one hour	\$125.00
104790	Phone support, 10 hours	\$1,250.00
104791	Phone support, 25 hours	\$3,125.00
104792	Phone support, 50 hours	\$6,250.00
101003	Additional OnTrak manual	\$55.00

# TransAct® LE/TransAct/TransAct Plus

Truck Data Management Software

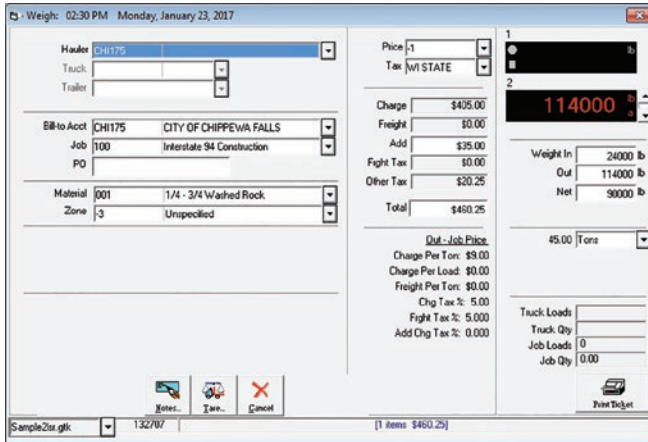


TRUCK DATA MANAGEMENT SOFTWARE

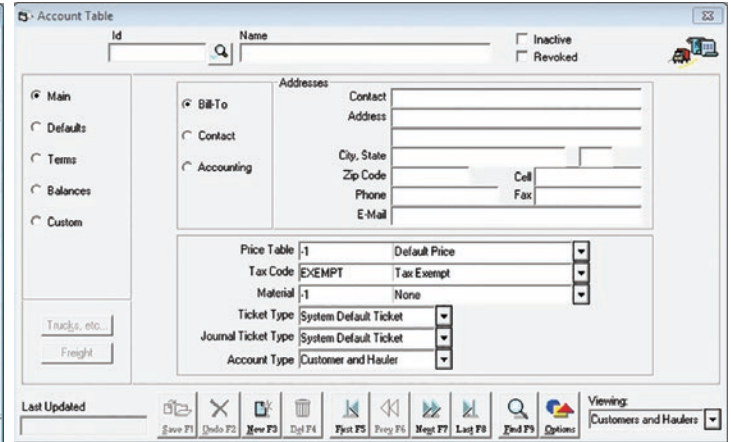
Approvals



SOFTWARE / TRACEABILITY SYSTEMS



Truck/Container Cash Transaction



Customer Account Table

Standard Features	TransAct LE	TransAct	TransAct Plus
Intuitive menu-driven programs	X	X	X
Ticket editing, voiding and reprinting with the Quickscan utility	X	X	X
Report to screen, printer or export	X	X	X
Password protection	X	X	X
Easy-to-use graphic interface	X	X	X
Full mouse and keyboard support	X	X	X
Fault-tolerant data recovery to protect from system crashes	X	X	X
Bar code, magstripe and RFID interface	X	X	X
Full database backup and purge functions	X	X	X
Truck overweight warning	X	X	X
Predetermined keyboard and automatic tare entry	X	X	X
Interfaces to ticket, tape, dot-matrix and laser printers	X	X	X
Unlimited configurable ticket formats	X	X	X
Networkable		X	X
Three-configurable tares		X	X
Four-configurable categories		X	X
Configurable product rates		X	X
Multiple scale operation		X	X
Multiple transactions per ticket		X	X
Job table for contract purchases		X	X
Accounts payable and receivable			X
Aging report showing current and extended balance 30, 60 and 90 days			X
Expandable reporting features			X
Credit weight limits			X
Prints customer invoices and statements with detailed transaction information			X
Full reporting by account, revenue, tonnage, material and transaction			X
Invoice processing is separate from statement processing			X
Two invoice options available (open item, balance forward)			X
Invoice and statement printing options (print summary report, print detailed report)			X
Reprint invoices, statements, summary reports or detailed reports by isolating ranges of invoice numbers or dates			X

www.ricelake.com | Phone: 800-472-6703

RICELAKE

932

# TransAct® LE/TransAct/TransAct Plus

Truck Data Management Software

## Specifications

### System Requirements:

Windows® 10 or operating system currently supported by Microsoft

### Hardware:

Intel® AMD® Processor, 1 GHz or greater  
1 GB of RAM or greater  
1 GB available storage space (data dependent)

### Databases:

Virtually unlimited with user-definable categories  
Full database backup including configuration files

### Communications:

Support for two printers with selectable drivers for most popular printers

### Transaction Ticket:

Configurable weigh-in and weigh-out ticket formats, complete selection of variables and data types

### Reports:

Full reporting capabilities by account, job, material, hauler, ticket, truck, container, trailer or date  
Age reports 30, 60, 90 days

### Export Data:

Reports can be saved in various formats such as XLS, PDF, Word or HTML  
Export/Import function for transferring transaction data in non-networking applications

### Transaction Calculations:

Definable product rates, charges, taxes and customer discounts  
Configurable percentage weight reductions for moisture and dockage

### Accounting (TransAct Plus Version):

Full accounting capabilities  
Accounts payable  
Accounts receivable  
Balance/reconciliation

### Software Support:

Rice Lake Weighing Systems offers field software support for TransAct LE/TransAct/TransAct Plus  
Contact our service department for software support  
Software support is a chargeable service

### Approvals:

NTEP CC 97-034



TRUCK DATA MANAGEMENT SOFTWARE

## Part Numbers/Price

Part #	Description	Price
79079	TransAct LE version 6.5.01	\$1,385.00
43898	TransAct version 6.5.01	\$2,470.00
98089	Additional seat TransAct 6.5.01 (must be purchased with original 6.5.01)	\$965.00
43899	TransAct Plus version 6.5.01	\$4,900.00
98090	Additional seat TransAct Plus 6.5.01 (must be purchased with original 6.5.01)	\$1,880.00

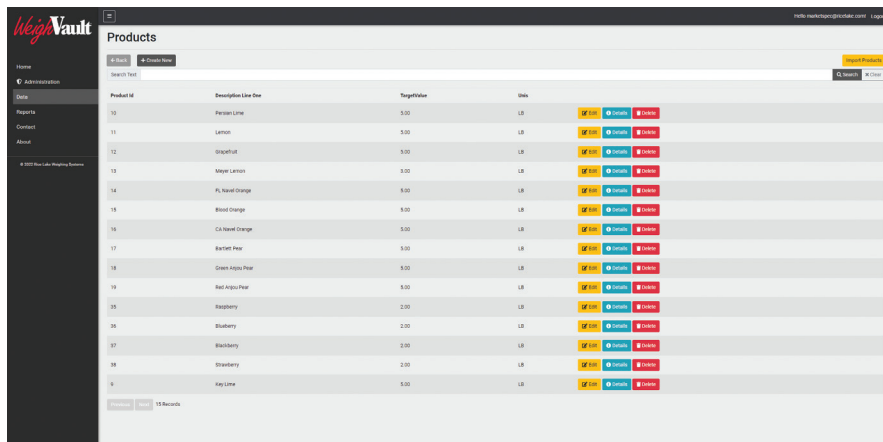
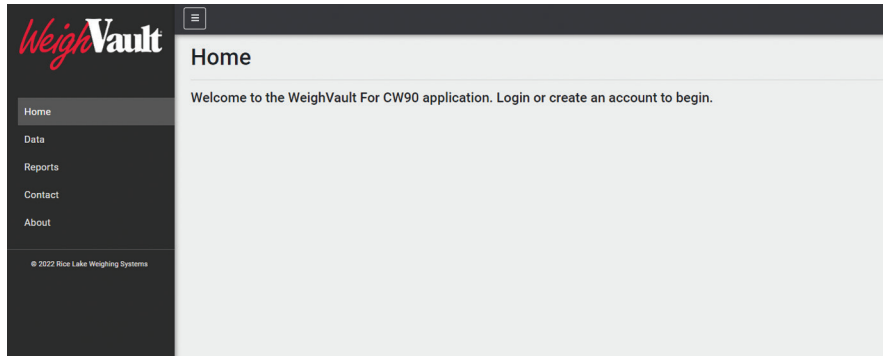
Note: TransAct demos can be downloaded from our website at [www.ricelake.com](http://www.ricelake.com)

## Options/Accessories

Part #	Description	Price
15547	Blunt end, 25-pin D-sub male RS-232 serial interface cable	\$70.00
<b>Interfaces to: 480, 680, 720, 820, 880, 920i and 1280</b>		
Consult	Upgrade from TransAct LE to TransAct 6.5.01	Consult
Consult	Upgrade from TransAct LE to TransAct Plus 6.5.01	Consult
Consult	Upgrade from TransAct to TransAct Plus 6.5.01	Consult
Consult	Quickbooks® interface for TransAct 6.5.01	Consult
Consult	Quickbooks® interface for TransAct Plus 6.5.01	Consult
Consult	3rd party accounting software interface for TransAct 6.5.01	Consult
Consult	3rd party accounting software interface for TransAct Plus 6.5.01	Consult
98103	Two hours configuration installation and training service	\$385.00
98104	Four hours configuration installation and training service	\$805.00
98105	Eight hours configuration installation and training service	\$1,740.00

# WeighVault®

Web Application with Middleware Services



## Standard Features

- Web application extends the memory of the device and makes data entry easy
- Boosts product ID storage to nearly limitless potential, and manage as many scales as necessary
- Eliminates front-panel entry of ID parameters
- Quickly program, edit and manage scales and each unique product ID right from your PC
- Stores the details of each transaction for either a single scale or multiple scales
- Collects data as transactions occur and provides detailed reports
- Allows users to add, edit and access IDs over a network connection
- Reports can be exported into word processing, spreadsheet, PDF format and more
- Microsoft® SQL Server Express client/server database (Express edition)
- User and administrator roles
- Integrate backend business systems easily with included REST API (OAS 3.0)

## Part Number/Price

Part #	Description	Price
117358	Software package, WeighVault for CW90/90X	\$250.00
125546	Software package, WeighVault for Counterpart	\$265.00

## Specifications

### Scale Requirements:

Ethernet TCP/IP connection to CW-90, CW-90X or Counterpart®

### Minimum System Requirements:

Windows® 10 build 1607 or newer (64 bit only) or equivalent Windows Servers OS  
 2.0 GHz processor or faster  
 250 MB drive space needed for install  
 8 GB ram or greater  
 Microsoft® SQL Server 2016 (Express edition included)  
 Ethernet TCP/IP connection to check weighing devices  
 A supported web browser (Apple Safari, Google Chrome, Microsoft Edge, Mozilla Firefox)

### Network Requirements:

The PC running the WeighVault service must have a static IP address  
 Known IP address and subnet of the host PC; if connecting via WLAN, known network SSID and security settings (pass keys and phrases)  
 Network policy must allow passwords of six characters

## Counterpart Functions Only

- Part Fields:
  - ID code [32 characters]
  - Unit weight [8 characters]
  - Tare weight [8 characters]
  - Unit of Measure [lb, kg, g, oz]
  - Parts name [32 characters]
  - Part description [32 characters]
  - Lot number [32 characters]
  - Location [12 characters]
  - Inventory quantity [8 characters]
- Reports:
  - Part
  - Inventory
  - Activity
  - Location

## CW-90/90X Functions Only

- Product Fields:
  - Product ID [4 characters]
  - Description, two lines [32 characters each]
  - Target Weight [8 characters]
  - Tare Weight [8 characters]
  - Overweight Limit [8 characters]
  - Underweight Limit [8 characters]
  - Unit of Measure [lb, kg, g, oz]
- Reports:
  - Transaction
  - Productivity



## Specifications

### System Requirements:

- Any version of Windows®
- Any Windows PC
- 4MB of RAM
- 2MB of hard disk space

### Communications:

WinWedge can collect data on any serial port (RS-232 or RS-485) and even on multiple ports simultaneously. Also supports full device control.

### Software Support:

Rice Lake Weighing Systems offers field software support for our software packages. Contact our Service Department for software support. Software support is a chargeable service.



## Standard Features

- Input scale or instrument data directly into Excel®, Access®, statistical software, LIMS, MMIs, or any Windows® application
- Transfers RS-232 data quickly, accurately and formatted to your exact specifications
- Powerful DDE options for collecting data from multiple devices simultaneously
- Extremely easy to set up and use

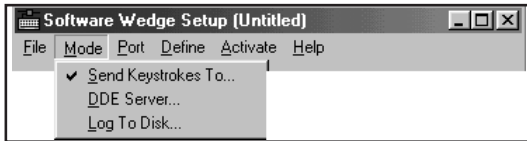
## WinWedge Pro Additional Features:

- Support for even the most complex devices and serial I/O with advanced data parsing, filtering, formatting and translation
- RS-232 data collection and I/O support, TCP/IP included with Pro version
- More advanced device control options
- Additional features such as math functions and virtual instrument mode

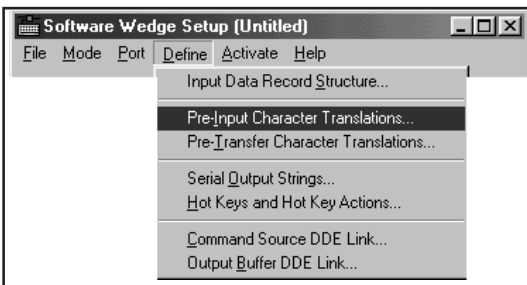
## Part Number/Price

Part #	Description	Price
75351	WinWedge® TAL software, 32 Std	\$345.00
72304	WinWedge® TAL software, 32 Pro, TCP/Wedge	\$575.00

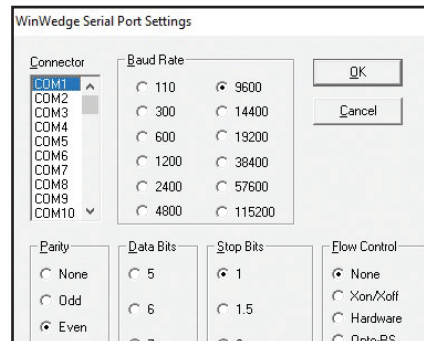
1. Select how you want the data collected:



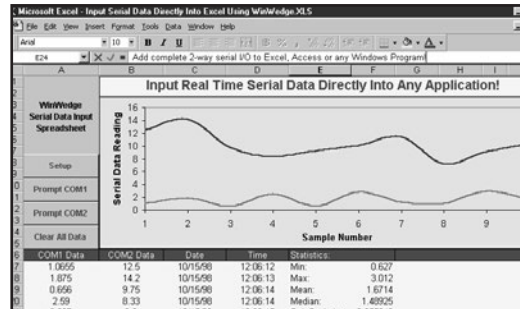
2. Choose the communication parameters for your serial device:

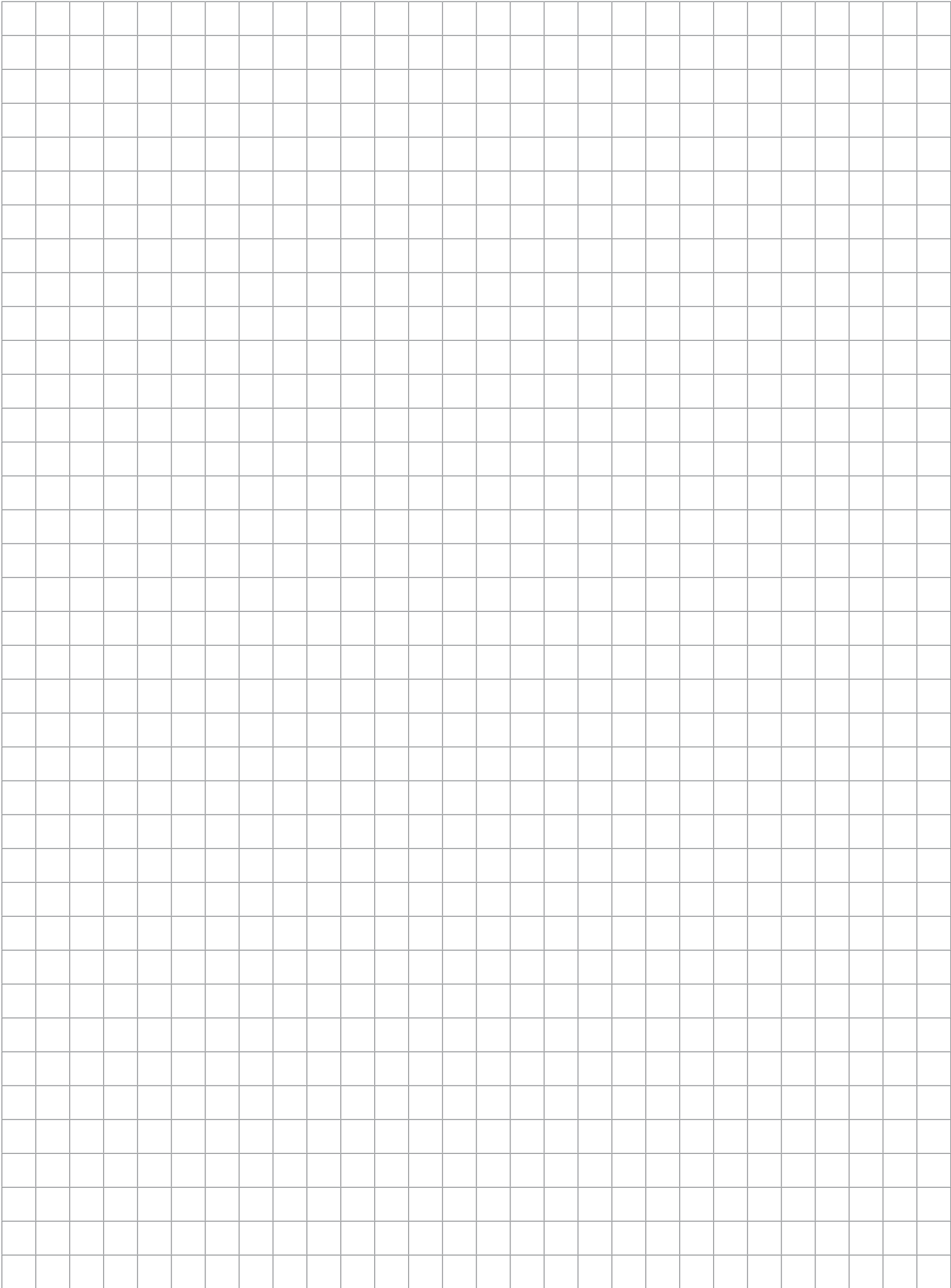


3. Define how you want the serial data to be parsed, filtered, and translated:



4. Activate WinWedge and watch your serial data "pop" into your application:



A large grid of empty cells, likely for data entry or calculation. The grid consists of 20 columns and 30 rows of small squares.