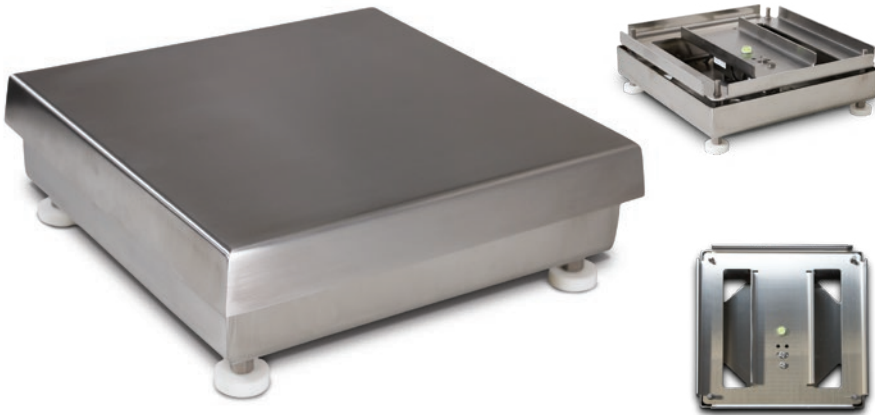


# CW-90XB

Light-capacity Bench Scale

BENCH SCALES



## Standard Features

- NTEP Certified load cell
- 304 stainless steel construction
- Meets HACCP requirements
- Five-point overload protection
- Specially designed adjustable support feet provide exceptional traction and will not scratch surfaces

## Specifications

### Load Cell:

IP69K, hermetically sealed  
Stainless steel

### Output Impedance:

350 ohm

### Maximum Overload:

180% to 200% depending on capacity

### Overload Protection:

Five-point, independently adjusted

### Scale Frame:

AISI304L, straight line finish, Ra=45 ± 10

### Scale Cover:

AISI304L, straight line finish, Ra=45 ± 10

### Cable Length:

34 in (86 cm) or 10 ft (3 m)

### Temperature:

Compensated:  
14 °F to 104 °F (-10 °C to 40 °C)

### Warranty:

Three-year limited  
(includes water ingress)

### Approvals:

NTEP 95-072, Class III 5,000 d  
Measurement Canada AM-5082  
NSF  
Load cell is NTEP  
Load cell is FM Approved

## Approvals



Measurement  
Canada  
Approved



## Part Number/Price

Part #	Platform Capacity	Dimensions (L × W × H)	Est. Weight	Price	
10 ft Cable 34 in Cable					
112600	106143	5 lb (2.5 kg)	10 × 10 × 4.25 in	14 lb	Consult
112602	106144	10 lb (5 kg)	10 × 10 × 4.25 in	14 lb	Consult
112604	106145	25 lb (10 kg)	10 × 10 × 4.25 in	14 lb	Consult
112606	106146	25 lb (10 kg)	12 × 12 × 4.25 in	17 lb	Consult
112608	106147	50 lb (25 kg)	12 × 12 × 4.25 in	17 lb	Consult
112610	106148	100 lb (50 kg)	12 × 12 × 4.25 in	17 lb	Consult

## Options/Accessories

Part #	Description	Catalog Page #
Consult	Scale columns	See page 195
Consult	Ball transfer and roller conveyor scale tops	See page 194
Consult	Mobile scale carts	See page 190 to page 193

## Dimensions

CW-90XB			
10 × 10 in			
H	4.25 in	W	10.00 in
L	10.00 in	W1	10.25 in
L1	10.25 in		

Note: 1 in = 25.4 mm

12 × 12 in			
H	4.25 in	W	12.00 in
L	12.00 in	W1	12.25 in
L1	12.25 in		

Note: 1 in = 25.4 mm

