

Indicators / Controllers

TABLE OF CONTENTS

Indicators / Controllers	35
1280 Enterprise™ Series	36
<i>Programmable Digital Weight Indicator</i>	
MSI-8000	41
<i>RF Remote Display</i>	
MSI-8000HD	42
<i>Digital Weight Indicator/RF Remote Display</i>	
MSI-8004HD	44
<i>Digital Weight Indicator/RF Remote Display</i>	
MSI Scoreboards Wireless RF	46
<i>Featuring LaserLight2™ Remote Displays</i>	
TranSend™	47
<i>Wireless Load Cell Interface System</i>	
MSI ScaleCore Webserver	48
<i>Wireless Network Router</i>	
Rugged Remote	50
<i>Remote Control</i>	
SCT-1100	51
<i>Signal Conditioning Transmitter</i>	
SCT-2200	52
<i>Signal Conditioning Transmitter</i>	
SCT-3300	53
<i>Signal Conditioning Transmitter</i>	
SCT-1PX	54
<i>Transmitter with Integrated Fieldbus and Web Server</i>	
SCT-1SX	55
<i>Transmitter with Integrated Fieldbus and Web Server</i>	
SCT-4X	56
<i>Integrated Fieldbus Transmitter</i>	
SCT-10	57
<i>Signal Conditioning Transmitter</i>	
SCT-20	58
<i>Signal Conditioning Transmitter</i>	
SCT-30	59
<i>Signal Conditioning Transmitter</i>	
SCT-40	60
<i>Signal Conditioning Transmitter</i>	
Ranger 7	61
<i>Variable Range Simulator</i>	

Product names, logos, brands and other trademarks featured
or referred to within this publication are the property of their respective trademark holders.

1280 Enterprise™ Series

Programmable Digital Weight Indicator



Specifications

Power:

AC voltages: 100 to 240 VAC; 50/60 Hz
DC voltages: 11 to 30 VDC

Power Consumption:

60 W

Excitation Voltage:

10 VDC (± 5 VDC)
16 \times 350 ohm or 32 \times 700 ohm load cells per A/D card

Analog Signal Input Range:

-60 mV to 60 mV

Analog Signal Sensitivity:

0.3 μ V/graduation minimum at 7.5 Hz to 120 Hz
1.0 μ V/graduation recommended

A/D Sample Rate:

7.5 to 960 Hz, software selectable

Resolution:

Internal: 8,000,000 counts
Display: 1,000,000

System Linearity

$\pm 0.01\%$ full scale

Digital I/O:

Eight I/O channels on CPU board
Optional 24-channel I/O expansion boards

Communication Ports:

Port 1 & 2: Full duplex RS-232 with CTS/RTS, RS-422/485
Baud rate: 1200 to 115200
Port 3: USB 2.0 Device (Micro)
USB host: (2) Type A connectors max 500 mA
Ethernet: Wired 10/100 Auto-MDX
Ethernet: Wireless 802.11 b/g/n 2.4GHz

Onboard:

Selectable filters: Three stage, Adaptive or Damping
Embedded Linux® OS
8 GB eMMC (system use)
1 GB DDR3 RAM
460 MB onboard database (SQLite) storage
Up to 32 GB micro SD card (sold separately)

Display:

Seven-inch, 800 \times 480 pixel, 500 or 1,000 NIT
Twelve-inch, 1280 \times 800 pixel, 1,500 NIT

Keys/Buttons:

22-key membrane panel, tactile buttons, on-screen keyboard for text and numeric entry, USB port for flash drive, keyboard and printer

Temperature:

Certified: 14 °F to 104 °F (-10 °C to 40 °C)
Operating: -4 °F to 131 °F (-20 °C to 55 °C)

Rating/Material:

Universal: IP69K
Wall Mount: IP66
Panel Mount: IP69K, NEMA Type 4X and 12
Stainless steel 304 enclosure

Weight:

Universal enclosure: 11 lb (4.9 kg)
Panel mount enclosure: 8 lb (3.6 kg)
Wall mount enclosure: 23 lb (10.4 kg)
Panel mount 7 in touch-only: 7 lb (3.1 kg)
Panel mount 12 in touch-only: 10 lb (4.5 kg)

Warranty:

Two-year limited

EMC Immunity:

10 V/m

Approvals:

NTEP 15-001/Class III/IIIL 10,000 d
Measurement Canada AM-5980C,
Class III/IIIL HD 10,000 d
OIML R76/2006-A-NL1-19.23 Class III/IIIL 10,000 d
OIML R61-1/2017 TC8596
cULus Listed (Universal, Wall Mount)
cULus Recognized (Panel Mount)
CE Marked

Approvals



Measurement
Canada
Approved



Standard Features

- Customizable color touchscreen with graphical user interface
- User-defined softkeys, icons and graphics
- Tactile keypad for scale operations, numeric entry and navigation
- On-screen keyboard available during entry mode (or external keyboard)
- Built-in web server for remote access, systems integration and data monitoring
- Multi-language operation and text entry
- Supports eight scales within five different kinds:
 - Analog load cell, multi-range/interval weighing
 - Total scale summing
 - Serial input scales
 - iQUBE²® and iQUBE³ scales
 - Program scales
- Six smart card slots for additional scale channels, serial ports, digital inputs and outputs, analog outputs and protocol interfaces
- iRite™ Programming Software
 - Five built-in applications: Truck In/Out, recipe storage, filling/dosing, counting, checkweighing
 - Customizable user programs with event-based functions
 - 150 built-in functions for common processes and data tables
 - Customize and transfer data via email, FTP server and networked printers
 - Display data with line charts or bar graphs
 - iRite reporting of iQUBE² and iQUBE³ alerts
- Email, USB, Ethernet TCP/IP, Wi-Fi Direct®, two serial ports RS-232 or RS-485
- Alibi memory captures serial port transmissions
- Four configurable data-stream formats for PC, printers and remote displays
- 100 setpoints, 18 configurable setpoint types
- Eight digital I/O for control and pulse count
- Three different enclosure types: universal with tilt stand, panel mount and wall mount

1280 Enterprise™ Series

Programmable Digital Weight Indicator



7-inch model with keypad

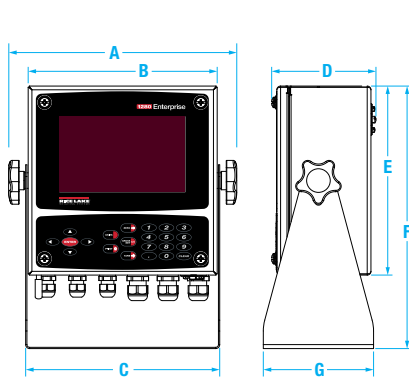


7-inch touch-only model

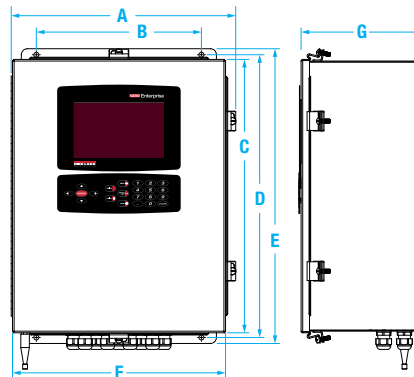


12-inch touch-only model

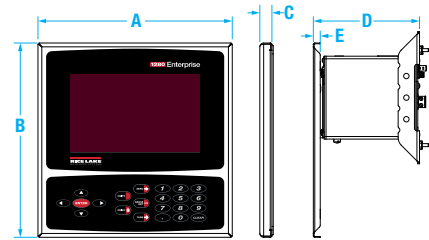
Numeric Keypad Models:



1280-2



1280-3



1280-4

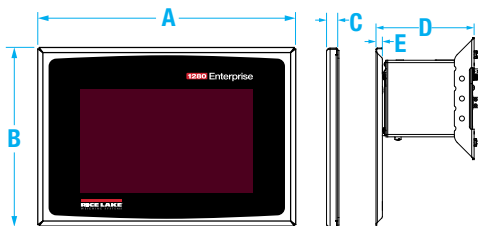
Dimensions

Universal (1280-2)			
A	10.86 in (276 mm)	E	9.00 in (229 mm)
B	9.00 in (229 mm)	F	12.50 in (318 mm)
C	9.24 in (235 mm)	G	5.25 in (133 mm)
D	4.97 in (126 mm)		

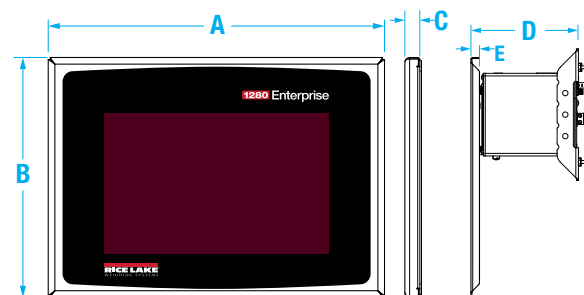
Wall Mount (1280-3)			
A	14.92 in (379 mm)	E	19.64 in (499 mm)
B	11.00 in (279 mm)	F	14.20 in (361 mm)
C	18.22 in (463 mm)	G	8.08 in (205 mm)
D	18.84 in (479 mm)		

Panel Mount (1280-4)			
A	9.00 in (229 mm)	D	5.34 in (136 mm)
B	9.00 in (229 mm)	E	0.32 in (8 mm)
C	0.58 in (15 mm)		

Touch-only Models:



1280-5



1280-6

Dimensions

7-inch Touch-only (1280-5)			
A	9.00 in (229 mm)	D	5.34 in (136 mm)
B	6.22 in (158 mm)	E	0.32 in (8 mm)
C	0.58 in (15 mm)		

12-inch Touch-only (1280-6)			
A	14.00 in (356 mm)	D	5.34 in (136 mm)
B	10.00 in (254 mm)	E	0.32 in (8 mm)
C	0.58 in (15 mm)		

1280 Enterprise™ Series

Programmable Digital Weight Indicator

Part Number/Price

Part #	Description	Power	Display	Option Installed	Price
Universal Enclosure with 500 NIT Display (1280-2)					
171427 †	1280 Universal	115 VAC	500 NIT	Single Scale Card	\$3,850.00
171441 ††	1280 Universal	100 to 240 VAC	500 NIT	Single Scale Card	\$3,850.00
171662 †	1280 Universal	115 VAC	500 NIT	Dual Scale Card	\$4,050.00
172188 ††	1280 Universal	100 to 240 VAC	500 NIT	Dual Scale Card	\$4,150.00
Panel Mount Enclosure with 500 NIT Display (1280-4)					
171663	1280 Panel Mount	100 to 240 VAC	500 NIT	Single Scale Card	\$3,725.00
172186	1280 Panel Mount	100 to 240 VAC	500 NIT	Dual Scale Card	\$3,950.00
Wall Mount Enclosure with 500 NIT Display (1280-3)					
173673 †	1280 Wall Mount	115 VAC	500 NIT	Single Scale Card	\$4,250.00
174143 ††	1280 Wall Mount	100 to 240 VAC	500 NIT	Single Scale Card	\$4,250.00
174144 †	1280 Wall Mount	115 VAC	500 NIT	Dual Scale Card	\$4,550.00
174145 ††	1280 Wall Mount	100 to 240 VAC	500 NIT	Dual Scale Card	\$4,550.00
Wall Mount Enclosure with 1000 NIT Display (1280-3)					
172184 †	1280 Wall Mount	115 VAC	1,000 NIT	Single Scale Card	\$4,350.00
172185 ††	1280 Wall Mount	100 to 240 VAC	1,000 NIT	Single Scale Card	\$4,350.00
206563 †	1280 Wall Mount	115 VAC	1,000 NIT	Dual Scale Card	\$4,550.00
172187 ††	1280 Wall Mount	100 to 240 VAC	1,000 NIT	Dual Scale Card	\$4,650.00
Touch-only 7 inch with 500 NIT Display (1280-5)					
186618	1280 Touch-only 7 in	100 to 240 VAC	500 NIT	Single Scale Card	\$3,750.00
Touch-only 12 inch with 1500 NIT Display (1280-6)					
186465	1280 Touch-only 12 in	100 to 240 VAC	1,500 NIT	Single Scale Card	\$4,375.00



† US plug (NA) - Type B



†† Euro Plug - Type E



(Brazil) - Type N



††† BS1363 (UK) - Type G



††† AS 3112 (Australian) - Type I

Model Reference Chart

Choose any options to best fit your application and we customize

ENCLOSURE TYPE

- 1 Universal (1280-2)
- 2 Panel (1280-4)
- 3 Wall (1280-3)
- 4 Touch-only Panel 7 in (1280-5)
- 5 Touch-only Panel 12 in (1280-6)

POWER TYPE

- 1 AC
- 2 DC

DISPLAY TYPE

- 1 500 NIT
7 in Universal
- 2 1000 NIT
7 in Universal
- 3 500 NIT
7 in Panel/Wall
- 4 1000 NIT
7 in Panel/Wall
- 5 1500 NIT
12 in Panel

CORD TYPE

- 1 US Plug
Universal
- 2 Brazil Plug
Universal
- 3 Euro Plug
Universal
- 4 US Plug
Wall
- 5 Euro Plug
Wall
- 6 Brazil Plug
Wall
- 7 UK Plug
Universal
- 8 AU/NZ Plug
Universal
- 9 UK Plug
Wall
- 10 AU/NZ Plug
Wall

OPTION CARDS ALL SLOTS MUST BE FILLED

- A Blank
If no option, controller will need 6 blanks
- B Single A/D Scale
- C Dual A/D Scale
- D 24 Channel Digital I/O
- E Dual Serial Channel
- F 4-dry Contact Relay
- G Single Analog Out
- H Dual Analog Out
- I Analog Out
- J EtherNet/IP™
- K DeviceNet®
- L PROFINET
- M Modbus TCP
- N PROFIBUS® DP
- O EtherCat®
- P PowerLink

1280 Enterprise™ Series

Programmable Digital Weight Indicator

Single A/D Scale



Excitation Voltage:

10 VDC bipolar, 4 or 6 wire sensing
16 × 350 ohms per channel

Analog Input Signal:

- 10 to + 40 mV

Part #	Description	Price
220026	Single scale A/D	\$475.00
166957	A/D sealing kit	\$15.00

Dual A/D Scale



Excitation Voltage:

10 VDC bipolar, 4 or 6 wire sensing
8 × 350 ohms per channel

Analog Input Signal:

- 10 to + 40 mV

Part #	Description	Price
220027	Dual scale A/D	\$675.00
166957	A/D sealing kit	\$15.00

Digital I/O



24 channels, configurable as inputs or outputs
Inputs: 5 VDC max, active low; Outputs: 20 mA max per channel, active low; 5 VDC source available: 500 mA max

Part #	Description	Price
164684*	Digital I/O	\$350.00
170008	DIO adapter, includes 60 pin flat ribbon cable, 24 in	\$130.00
170009	DIO adapter, includes 60 pin round cable, 60 in	\$225.00
170736	DIO adapter, includes 60 pin cable and cord grip, 60 in	\$155.00

* 24 I/O ribbon cable required.

Dual Serial Channel



Two-channel, full duplex RS-232 with CTS/RTS, RS-485 or RS-422, 1200 to 115200 baud

Part #	Description	Price
164685	Dual serial channel	\$425.00

Single Analog Out



16 bit, voltage output 0 to 10 VDC, current output 0 to 20 mA, 4 to 20 mA

Part #	Description	Price
165366	Single analog out	\$375.00

Dual Analog Out



16 bit, voltage output 0 to 10 VDC, current output 0 to 20 mA, 4 to 20 mA

Part #	Description	Price
164686	Dual analog out	\$550.00

Relay Card



Relay four-dry contact, max current
3 A @ 30 VDC, 3 A @ 250 VAC

Part #	Description	Price
164689	Relay card	\$425.00

Analog Input



Analog Input Signal:

± 10 VDC, ± 100 mV, 0 to 20 mA

Part #	Description	Price
164687	Dual analog input	\$650.00

Data Exchange with PLC/DCS Systems

EtherNet/IP™



Part #	Description	Price
165792	EtherNet/IP, single port	\$620.00
208129	EtherNet/IP, dual port	\$805.00

DeviceNet®



Part #	Description	Price
165793	DeviceNet	\$620.00

PROFINET



Part #	Description	Price
165794	PROFINET	\$620.00

Modbus TCP



Part #	Description	Price
165796	Modbus TCP	\$620.00

PROFIBUS® DP



Part #	Description	Price
165795	PROFIBUS DP	\$620.00

EtherCAT®



Part #	Description	Price
179533	EtherCAT	\$620.00

INDICATORS /
CONTROLLERS

1280 Enterprise™ Series

Programmable Digital Weight Indicator

Options/Accessories

To have your option factory installed, please specify when placing your order.

Part #	Description	Price
Manuals and Software		
167659	Technical Manual	\$35.00
72809	Interchange database software	\$325.00
164939	8 GB Micro SD card with SD and USB adapter	\$25.00
195607	USB flash drive, 1 GB	\$9.00
Extended Display Cable Length for Touch Only Models		
182600	Display cable for 7 in (500 NIT) touch-only, 5 ft length	\$130.00
182601	Display cable for 7 in (500 NIT) touch-only, 10 ft length	\$160.00
187489	Display cable for 7 in (1,000 NIT) touch-only, 10 ft length	\$160.00
180027	Display cable for 12 in touch-only, 5 ft length	\$160.00
180028	Display cable for 12 in touch-only, 10 ft length	\$160.00
Extended Touch Cable Length for Touch Only Models		
180744	Touch cable for touch-only, 5 ft length	\$105.00
180745	Touch cable for touch-only, 10 ft length	\$105.00

Primary Component Parts

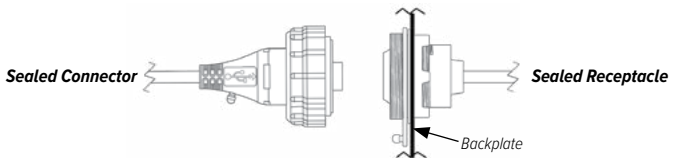
Part #	Description	Price
Displays		
163400	7 in 500 NIT display	\$350.00
163399	7 in 1,000 NIT display	\$450.00
182992	12 in 1,500 NIT display	\$995.00
Boards		
179992	1280 main CPU board with fan plate	\$1,100.00
199157	1280, CPU AC power, extruded aluminum enclosure (replacement)	\$1,500.00
Power Supplies		
202512	AC power supply board	\$180.00
202514	DC power supply board	\$180.00
Overlays		
164121	Keypad, for panel and wall mount	\$75.00
164120	Touchscreen, for panel and wall mount	\$130.00
161731	Keypad, for universal	\$75.00
161730	Touchscreen, for universal	\$145.00
178498	Touchscreen, for 7 in touch-only panel mount	\$295.00
176126	Touchscreen, for 12 in touch-only panel mount	\$400.00
178161	Clear protective overlay display for 7 in display (pack of 5)	\$63.00
178163	Clear protective overlay keypad for 7 in display (pack of 5)	\$63.00

Cables and Receptacles

To have your option factory installed, please specify when placing your order.

Part #	Connector Type		Length	Price
USB Cables <i>(Connector is a male plug)</i>				
79074	A UNSEALED	B UNSEALED	2 m	\$35.00
124700	A SEALED	B SEALED	3 m	\$125.00
126477	A SEALED	A UNSEALED	3 m	\$545.00
124701	A SEALED	B UNSEALED	3 m	\$745.00
124702	B SEALED	A UNSEALED	3 m	\$675.00
152434	A UNSEALED	Micro A UNSEALED	2 m	\$55.00
USB Receptacles <i>(Receptacle is a socket)</i>				
176790 Panel Mount	A SEALED	A UNSEALED	0.75 m	\$105.00
126476 Wall Mount	A SEALED	A UNSEALED	0.5 m	\$125.00
172735 Universal	A SEALED	A UNSEALED	0.25 m	\$90.00
Ethernet Cables				
72697	RJ-45 UNSEALED	RJ-45 UNSEALED	2 m	\$40.00
124706	RJ-45 SEALED	RJ-45 SEALED	3 m	\$625.00
124707	RJ-45 SEALED	RJ-45 UNSEALED	2 m	\$125.00
Ethernet Receptacles <i>(Receptacle is a socket)</i>				
176789	RJ-45 SEALED		0.75 m	\$145.00
172734	RJ-45 SEALED		0.5 m	\$90.00
126353	RJ-45 SEALED		0.25 m	\$125.00
Cable and Receptacle Accessories				
124694	Cover for sealed receptacles			\$25.00
124689	Cover for flash driver mounts on sealed receptacle			\$45.00

Unsealed Connectors





Part Number/Price

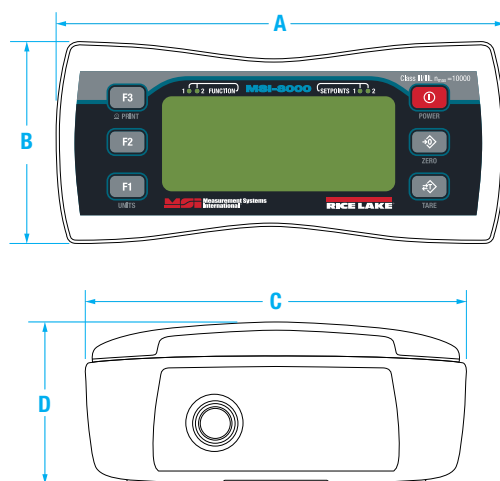
Part #	Description	Est. Weight	Price
139381	MSI-8000 RF remote display	5 lb	\$1,530.00

Options/Accessories

Part #	Description	Est. Weight	Price
149549	Universal 115/230 VAC 50/60 Hz (NA plug standard) battery charger for MSI-8000 RF remote display	3 lb	\$180.00
149550	Universal 115/230 VAC 50/60 Hz (EC plug standard) battery charger for MSI 8000 RF remote display	1 lb	\$180.00
150964	DB9 female serial interface cable for MSI-8000 RF remote display	1 lb	\$220.00
151095	Audible alarm	—	\$330.00

Dimensions

MSI-8000			
A	8.00 in (203 mm)	C	3.85 in (98 mm)
B	3.85 in (98 mm)	D	1.37 in (35 mm)



Standard Features

- LCD display
- Membrane keypad for remote control functionality
- User-definable function keys for added versatility
- Universal 115/230 VAC, 50/60 Hz battery charger (NA plug standard)
- Compatible with all ScaleCore™ based products including: MSI-7300 Dyna-Link 2, MSI-3460 Challenger 3, MSI-4260 Port-A-Weigh, MSI-7000 and MSI-7001 TranSend™, MSI-9600HT and MSI-6360

(Contact MSI for application consultation)

Specifications

Power:

Integral lithium-ion battery
Universal 115/230 VAC, 50/60 Hz battery charger (NA plug included)

Operating Time:

Up to 24 hours of continuous use (15 minute auto-shutoff with non-use)

Annunciators:

COZ, stable, low battery, peak, net, kg, kN, lb, M, ton, setpoint, function LEDs

Weight:

0.98 lb (445 g)

Keys/Buttons:

On/Off, zero (100%), tare, print and two user-defined keys for the following functions: peak hold, high resolution, total, view total, net/gross, unit switching

Display:

Six-digit 1.0 in (26.4 mm) LCD screen

Temperature:

Operating:
-4 °F to 140 °F (-20 °C to 60 °C)

Rating/Material:

NEMA Type 4, IP65

RF Radio Link:

2.4 GHz 802.15.4
Communicates with RF 3460, 4260, 7300, 7000 & 7001

RF Effective Range:

Typically 100 to 300 ft, line of sight;
for longer range consult factory

Connector:

Four-pin Turck connector for charging and RS-232 communication

Warranty:

One-year limited

MSI-8000HD

Digital Weight Indicator/RF Remote Display



Approvals



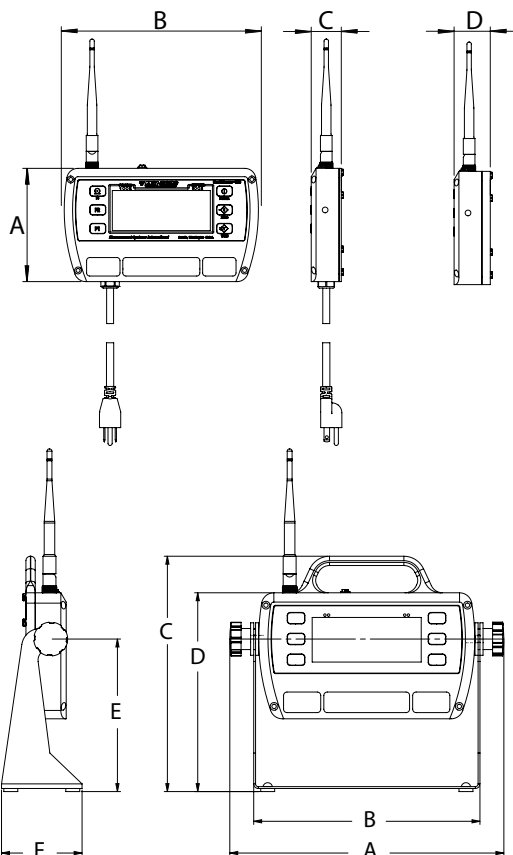
Standard Features

- Compatible with all ScaleCore™ based products
- LCD display
- Time and date
- Membrane keypad for remote-control functionality
- User-definable function keys for added versatility
- Swivel tilt stand

Dimensions

MSI-8000HD	
A	5.09 in (129 mm)
B	8.98 in (228 mm)
C	1.35 in (34 mm)
D	1.63 in (41 mm)

With Tilt Stand	
A	11.06 in (281 mm)
B	9.13 in (232 mm)
C	9.50 in (241 mm)
D	8.02 in (204 mm)
E	6.16 in (156 mm)
F	3.25 in (83 mm)



Options

(Contact MSI for application consultation)

- 18 to 72 VDC power
- Up to 8 configurable relay outputs
- Wi-Fi communications
- Wi-Fi indicators
- 802.15.4 Serial RF
- FHSS
- Wired Ethernet

Specifications

Power:

90 to 267 VAC, 9 to 36 VDC, 18 to 72 VDC,
120 to 300 VDC
Optional battery power module available

Excitation Voltage:

4.8 V current limited and over-voltage protected

RF Remote Channels:

Up to four remote sensors, monitored individually,
in pairs or sum all (non-A/D version only)

Service Counters:

A/D version only

A/D Inputs:

Two independent or summing load cell inputs

Filtering:

Off, Low, Hi-1, Hi-2

RF Radio Link:

2.4 GHz 802.15.4
Compatible with all ScaleCore™ based
products, including:
MSI-7300 Dyna-Link 2,
MSI-3460 Challenger 3,
MSI-4260 Port-A-Weigh, MSI-7000 and MSI-7001

RF Effective Range:

Typically 100 to 300 ft, line of sight;
for longer range consult factory

Communication Ports:

Dual RS-232 communication ports

Annunciators:

Stable, CO2, Peak, kg, kN, lb, M, Ton, Setpoint,
Function LEDs
Channels: 1, 2, 3, 4, TTL

Display:

Six-digit 1.0 in (26.4 mm) LCD

Units Displayed:

Pounds, kilograms, tons, metric tons, kilonewtons

Keys/Buttons:

On/Off, zero (100%), tare, print, and two user-
defined keys for the following functions: peak hold,
high resolution, total, view total, net/gross,
units switching

Rating/Material:

Enclosure: NEMA Type 4, IP66 milled anodized
aluminum with O-ring gaskets

Temperature:

Certified: 14 °F to 104 °F (-10° °C to 40 °C)
Operating: -4 °F to 140 °F (-20 °C to 60 °C)

Warranty:

One-year limited

Approvals:

NTEP 15-110

Part Number/Price

Part #	Description	Est. Weight	Price
Indicator			
158427	Indicator, dual channel, 85 to 265 VAC	5 lb	\$2,025.00
158428	Indicator, dual channel, internal battery	5 lb	\$2,150.00
160478	Indicator, dual channel, 7 to 36 VDC	5 lb	\$1,825.00
159380	Indicator, dual channel, 9 to 36 VDC	5 lb	\$1,850.00
158425	Indicator, RF, dual channel, 85 to 265 VAC	5 lb	\$2,050.00
158426	Indicator, RF, dual channel, internal battery	5 lb	\$2,175.00
160477	Indicator, RF, dual channel, 7 to 36 VDC	5 lb	\$2,050.00
159378	Indicator, RF, dual channel, 9 to 36 VDC	5 lb	\$2,075.00
Remote Display			
153591	Remote display, RF, 85 to 265 VAC	5 lb	\$1,675.00
154853	Remote display, RF, internal battery	5 lb	\$1,825.00
160476	Remote display, RF, 7 to 36 VDC	5 lb	\$1,625.00
159376	Remote display, RF, 9 to 36 VDC	5 lb	\$1,650.00

Options/Accessories

Part #	Description	Price
155173	MSI-8000HD spare tilt stand option kit	\$94.00
155193	MSI-8000HD Ethernet TCP/IP option kit wired	\$475.00
162178	Antenna extension kit, 6 ft	\$535.00
148624	MSI-8000HD serial RS-232 cable	\$150.00
158779	MSI-8000HD two each coil relay option kit, 250 VAC/30 VDC 5 A or 100 VDC 0.4 A	\$410.00
158780	MSI-8000HD two each solid state relay option kit, 60 V pk 2.7 A	\$410.00
158781	MSI-8000HD two each solid state relay option kit, 200 V pk 0.9 A	\$420.00
149549	Universal 115/230 VAC 50/60 Hz (NA plug standard) battery charger for MSI-8000HD battery powered device	\$180.00
149550	Universal 115/230 VAC 50/60 Hz (international plugs) battery charger for MSI-8000HD battery powered device	\$180.00
171203	Audible alarm kit	\$390.00
176963	Serial print cable (for GoDex printer)	\$175.00
Relays		
172490	Expanded relay kit, four-channel, 12 A 5 V, latching relays	Consult
172492	Expanded relay kit, four-channel, 12 A 5 V, momentary relays	Consult
Consult	Expanded relay kit, four-channel, 0.9 A 200 V pk, AC/DC solid state relays	Consult
172495	Expanded relay kit, eight-channel, 12 A 5 V, momentary relays	Consult
172500	Expanded relays option kit, four-channel, 3 A, 60 V pk solid state Form C relays	Consult
172501	Expanded relays option kit, eight-channel, 3 A 60 V pk, solid state Form C relays	Consult
172502	Expanded relays option kit, eight-channel, 0.9 A 200 V pk, solid state Form C relays	Consult
171676	Expanded relays option kit, eight-channel, 12 A 5 V, latching relays	Consult

MSI-8004HD

Digital Weight Indicator/RF Remote Display



Approvals



Measurement
Canada
Approved

Standard Features

- Multicolor LED display
- Backlit membrane keypad for user functioning and controls
- Tilt bracket included
- Color changing display (via setpoints)

Options

(Contact MSI for application consultation)

- Expanded relay outputs
- Battery pack for mobile operation
- Second radio module for additional network connectivity
- Remote display 8 to 32 VDC
- Remote display 5 VDC
- Remote display 9 to 36 VDC
- Indicator 8 to 32 VDC
- Wired Ethernet
- Single and dual channel analog output
- Additional antenna kits
- Extended relay option kits

Part Number/Price

Part #	Description	Price
Indicator		
221177	AC Power (85 to 264 VAC), multi-color display, RF	\$2,075.00
221183	AC Power (85 to 264 VAC), multi-color display, RF, Instant power-on	\$2,050.00
221179	DC Power (9 to 36 VDC), multi-color display, RF	\$2,075.00
221181	DC Power (5 VDC), multi-color display, RF	\$2,225.00
Remote Display		
221176	AC Power (85 to 264 VAC), multi-color display, RF	\$2,075.00
221180	External battery (Li-ion 5V/3A), multi-color display, RF	\$2,025.00

Specifications

Power:

90 to 267 VAC, 9 to 36 VDC, 18 to 72 VDC,
120 to 300 VDC

Excitation Voltage:

4.8 V current limited and over-voltage protected

Functions:

Peak hold, high resolution, total, view total
net/gross, units switching

Units:

Pounds and kilograms

Channels:

1, 2, 3, 4, TTL

RF Remote Channels:

Up to 4 remote sensors, monitored individually,
in pairs or sum all (non-A/D version only)
(when used with TransSend™)

Service Counters:

A/D version only

A/D Inputs:

Two independent or summing load cell inputs

Relays:

Two 5 V coil, 250 VAC, 5 A relays

Filtering:

Off, Low, Hi-1, Hi-2

RF Radio Link:

2.4 GHz 802.15.4, optional second channel
for Serial RF, 802.11 Wi-Fi

RF Effective Range:

Typically 100 to 300 ft, line of sight; for longer
range consult factory

Communication Ports

Two RS-232 hard wired communication ports

Annunciators:

Stable, COZ, BT, RF, TTL, NET, kg, lb

Display:

Six-digit, 1.5 in (38 mm) LED display with red/green/
orange coloring

Keys/Buttons:

On/Off, Zero, Tare, Print and two user-defined keys

Temperature:

Certified: 23 °F to 104 °F (-5 °C to 40 °C)
Operating: -40 °F to 140 °F (-40 °C to 60 °C)

Rating/Material:

NEMA Type 4, IP66 milled anodized aluminum

Warranty:

One-year limited

Approvals:

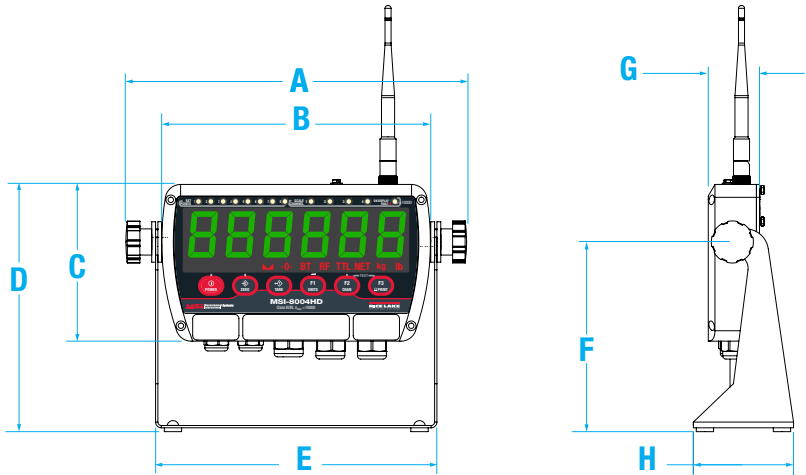
NTEP 17-036
Measurement Canada AM-6068

Options/Accessories

Part #	Description	Price
162178	Antenna extension kit, 6 ft	\$535.00
197013	Antenna extension kit, 20 ft	\$575.00
199105	Audible alarm not compatible with battery versions	Consult
22436	Cable assembly, DB9F to bare wires, 6 in, Gen 1	\$70.00
148624	Cable assembly, RS232 DB9, Gen 2	\$150.00
183437	Battery, 5V Li-ion battery with USB power ports. Output 5 V/3.0 A per port (6.0 A max) rate, 2 A per port (4 A if both ports are used).	\$245.00
187425	8004 option kit, Wi-Fi with TNC connector	\$210.00
187424	8004 option kit, 2nd Xbee® with TNC connector	\$220.00
223594	Option Kit, Dual Analog Output, 8004HD	\$625.00
224817	Ethernet (forward module only)	\$250.00

Dimensions

MSI-8004HD			
With Tilt Stand			
A	11.10 in (282 mm)	E	9.13 in (232 mm)
B	8.76 in (223 mm)	F	6.16 in (156 mm)
C	8.02 in (204 mm)	G	3.25 in (83 mm)
D	5.09 in (129 mm)	H	1.66 in (42 mm)



INDICATORS /
CONTROLLERS

MSI Scoreboards Wireless RF

Featuring LaserLight2™ Remote Displays



- Auto Learn mode of communication protocols
- Hold displayed weight (demand input)
- Software selectable standstill mode for no updates while in motion
- Durable weather-tight IP66 enclosure
- Adjustable day/night intensity
- Non-glare contrast filtered lens
- Mirror (reverse image) feature
- RS-232, 20 mA and RS-485 communications
- Auto sensing 115/230 VAC power supply
- PEMs for VESA flat-wall mount or side-mounting flange available
- Polyethylene breather vent inhibits internal moisture buildup
- Compatible with: MSI-7300 Dyna-Link 2, MSI-3460 Challenger 3, MSI-4260 Port-A-Weigh, MSI-7000 and MSI-7001 TranSend™, MSI-9600HT, MSI-6360, MSI-8000HD and MSI-8004HD

(Contact MSI for application consultation)

Specifications

Display:

Six-digit long-life LED, 4 in or 6 in

Power:

AC/DC power supply 85 to 265 VAC, 47 to 440 Hz/130 to 300 VDC

Rating/Material:

NEMA Type 4, IP66

Radio Link:

Direct sequence spread spectrum at 2.4 GHz

Radio Link Effective Range:

Typically, 100 to 300 ft, line of sight; for longer range consult factory

Temperature:

Operating:
-40 °F to 120 °F (-40 °C to 49 °C)

Standard Antenna:

1/2 wave 2 dBi, articulated

Warranty:

One-year limited

Echo Data Output:

RS-232

Standard Features

- Tilt mounting bracket
- Integrated data repeater
- Six high-intensity red digits (double-row discrete LED)

Part Number/Price

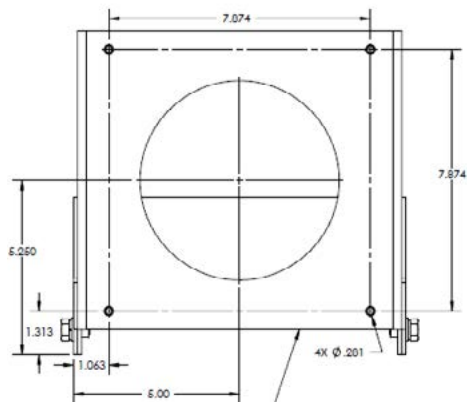
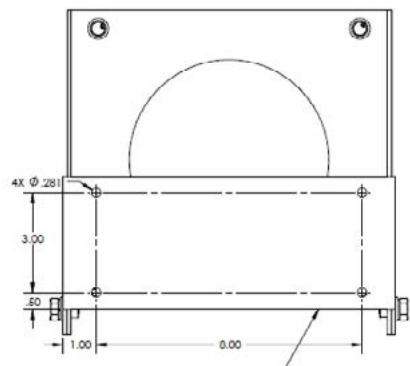
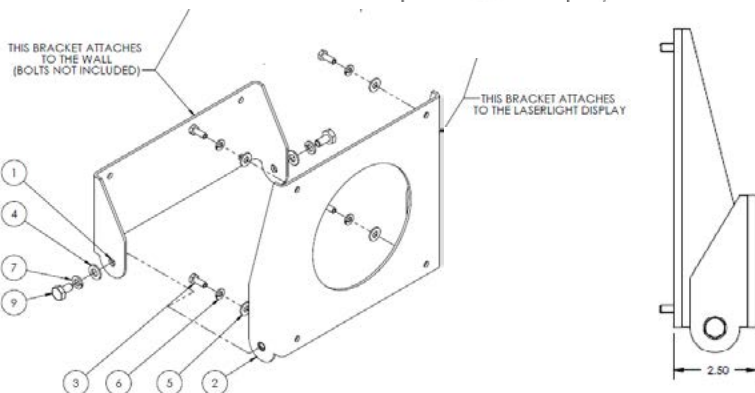
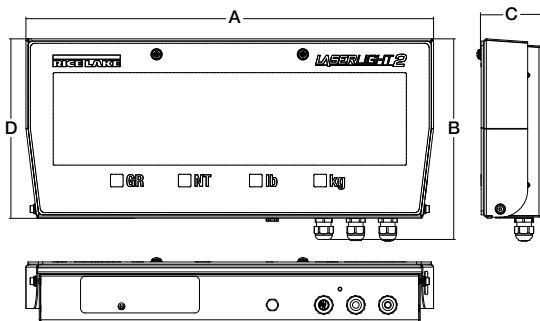
Part #	Description	Est. Weight	Price
178004	LaserLight2, 4 in with ScaleCore RF and tilt bracket	20 lb	\$3,350.00
178006	LaserLight2, 6 in with ScaleCore RF and tilt bracket	25 lb	\$3,850.00
178341	Laserlight2, 4 in with tilt bracket	20 lb	\$2,650.00
178342	Laserlight2, 6 in with tilt bracket	20 lb	\$3,025.00

Options/Accessories

Part #	Description	Price
162178	Antenna extension kit, 6 ft	\$535.00
197013	Antenna extension kit, 20 ft	\$575.00
178318	Replacement tilt bracket, LaserLight2	\$275.00

Dimensions

MSI Scoreboards Wireless RF					
22 in enclosure (4 in model)			31 in enclosure (6 in model)		
A	22.28 in (565 mm)	C	3.28 in (85 mm)	A	30.63 in (780 mm)
B	10.96 in (280 mm)	D	9.80 in (250 mm)	C	3.73 in (95 mm)
				B	13.94 in (355 mm)
				D	12.77 in (325 mm)





Part Number/Price

Part #	Description	Est. Weight	Price
MSI-7000			
227549	Four-channel, transmitter, 85-265 VAC, load cell, w/3 relays	2 lb	\$1,425.00
227550	Four-channel, receiver, 85-265 VAC, digital, w/3 relays	2 lb	\$1,275.00
MSI-7001			
230905	Single-channel, transmitter, 85-265 VAC, load cell input	2 lb	Consult
230951	Single-channel, receiver, 85-265 VAC, mV output	2 lb	Consult
230952	Single-channel, receiver, 85-265 VAC, RS232 output	2 lb	Consult

Options/Accessories

Part #	Description	Price
143531	Power cord, 6 V SLA battery charger EU	\$33.00
143533	Power cord, 6 V SLA battery charger, Australia	\$54.00
143534	Power cord, 6 V SLA battery charger, UK	\$49.00
162178	Antenna extension kit, 6 ft coax cable	\$535.00
150964	RS-232 13 ft (4 m) serial cable with nine-pin (female) connector, MSI-7001	\$220.00
150965	RS-232 13 ft (4 m) serial cable with nine-pin (male) connector, MSI-7001	\$180.00
145085	RS-232 serial cable, unterminated, MSI-7000	\$145.00
148624	Cable assembly, RS232/485 to DB9, used for setup and calibration	\$150.00
144400	Cable assembly, 4 pin, female, 4 meter, mV	\$110.00
145084	Cable assembly, 4 pin, female, 2 meter, mV	\$64.00
162177	Cable assembly, 4 pin, male, 2 meter, A2D cable, MSI-7001	\$145.00
162184	Connector, M12, 4 pin, straight, mV, MSI-7001	\$65.00
162185	Connector, M12, 4 pin, right-angle, mV, MSI-7001	\$65.00

Standard Features

- Works with any basic digital weight indicator
- Excitation to load cell(s) provided by the transmitter, not the indicator
- Each transmitter/receiver set is individually paired
- Serial communication cable included

Options

(Contact MSI for application consultation)

- Multiple antenna selections
- Analog output
- Additional VDC input power

Specifications

Power:

85 to 265 VAC

Excitation Voltage:

Transmitter: +4.8 VDC, 16 × 350 ohm or 32 × 700 ohm load cells

Standard Antenna:

1/2 wave 2dBi, articulated

Frequency:

Spread spectrum at 2.4 GHz, 802.15.4

Effective Range:

Typically 100 to 300 ft, line of sight; for longer range consult factory

Communication Ports:

Full duplex RS-232

Circuit Protection:

RFI, EMI, ESD protection

Temperature:

Operating:
-40 °F to 185 °F (-40 °C to 85 °C)

Rating/Material:

IP68, die-cast aluminum enclosure

Additional RF Options:

Wi-Fi
802.15.4
FHSS

Warranty:

One-year limited

MSI ScaleCore Webserver

Wireless Network Router



Approvals



Part Number/Price

Part #	Description	Price
207943	ScaleCore Webserver, 5 VDC and PoE	\$4,025.00
209704	ScaleCore Webserver, 7 to 14 VDC and PoE	\$4,025.00
210817	ScaleCore Webserver, 85 to 265 VAC and PoE wall cube	\$4,025.00

Options/Accessories

Part #	Description	Price
Consult	Extended-range antennas	Consult
213559	MSI-8000 handheld remote display with Wi-Fi, (only to be used with MSI ScaleCore Webserver systems and applications)	\$1,650.00
224240	Webserver Access Point, more than 8 devices	\$1,400.00

* Other MSI Wi-Fi products available based on application requirements.

Standard Features

- Display and control multiple ScaleCore based scales, indicators, remote displays and receivers through network connected devices using a web browser, including cell phones, tablets and PCs
- Capable of functioning either with an existing Wi-Fi network or as its own Wi-Fi router
- Can be powered by a dedicated power input or directly through the Ethernet cable where PoE (Power over Ethernet) is supported
- RS-232 communications at up to 460 Kbps
- Scale / load cell summing
- Tiered login to limit scale functionality for different levels of users

(Contact MSI for application consultation)

Specifications

Power:

5 to 6 VDC, 7 to 14 VDC, 85 to 265 VAC, PoE

Effective Range:

Typically 100 to 300 ft, line of sight; for longer range consult factory

Minimum System Requirements:

Will display on any device with a web browser supporting HTML 5
Connected ScaleCore based MSI scales and indicators are required to have the optional Wi-Fi radio modul

Connectivity:

Wi-Fi 2.4 GHz IEEE 802.11g
Gigabit Ethernet
2 x USB 2.0 Interface
RS-232 Serial

Status Annunciators:

Units (lb, kg, short tons (tn), metric tons (t), (NONE) gross/net, motion, center of zero

Enclosure:

IP65, aluminum black powder coated
(excludes 85 to 265 VAC model)

Temperature:

Operating:
14 °F to 104 °F (-10 °C to 40 °C)

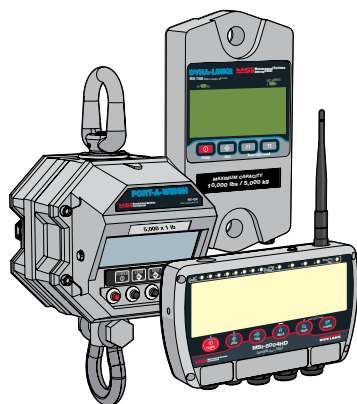
Warranty:

One year limited

Approvals:

NTEP 21-098 Classes III and IIIL at 10,000d

INDICATORS /
CONTROLLERS



MSI ScaleCore and Wi-Fi enabled device

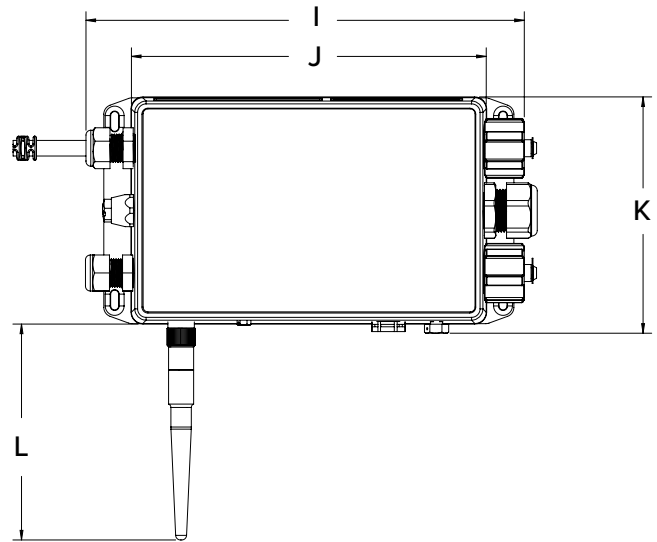
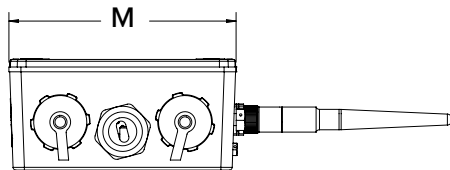
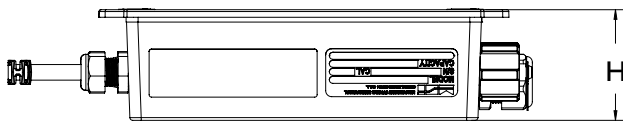
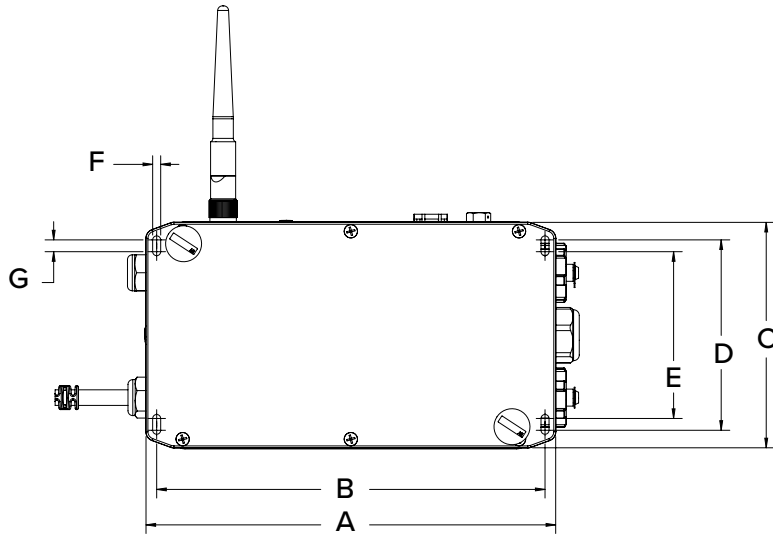


Display multiple ScaleCore devices using a web browser

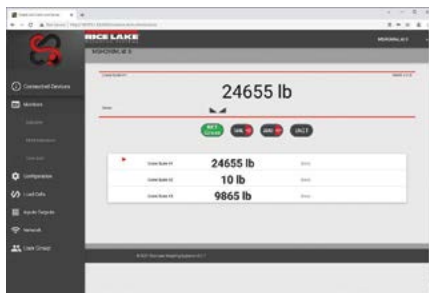
Dimensions

ScaleCore Webserver

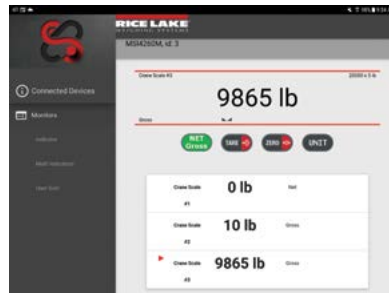
A	8.54 in (217 mm)	H	2.23 in (57 mm)
B	8.09 in (205 mm)	I	9.13 in (232 mm)
C	4.70 in (119 mm)	J	7.40 in (188 mm)
D	3.97 in (101 mm)	K	4.90 in (124 mm)
E	3.47 in (88 mm)	L	4.50 in (114 mm)
F	0.17 in (4 mm)	M	4.70 in (119 mm)
G	0.25 in (6 mm)		



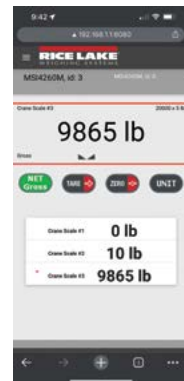
INDICATORS/
CONTROLLERS



Computer Screenshot



Tablet Screenshot



Phone Screenshot

Rugged Remote

Remote Control



Approvals



Part Number/Price

Part #	Description	Est. Weight	Price
173014	MSI Rugged Remote control, non-CE approved	3 lb	\$375.00
211841	MSI Rugged Remote control, CE approved	3 lb	\$375.00

Standard Features

- Handheld
- Compatible with: MSI-7300, Dyna-Link 2, MSI-7000 Series and all MSI Crane Scales
- Four button interface: Power, zero, tare, function

Specifications

Power:

Battery operated, three (3) AAA alkaline batteries

Function:

Power: turns unit on/off

Zero: zeros applied load up to 100% of capacity (limited range in NTEP/OIML configurations)

Tare: tares applied load and displays weight in net mode

User: programmable as test, units, net/gross, total, peak hold and setpoints

Radio Effective Range:

Typically 100 to 300 ft line of sight

Warranty:

One-year limited

Approval:

CE Listed



SCT1100-AN with Analog Output



SCT-1100-AN in Plastic Enclosure

Specifications

Power:

12/24 VDC

Power Consumption:

70 mA min to 100 mA max

Excitation Voltage:

5VDC, 120 mA, 8 × 350 ohm load cells

Analog Signal Input Range:

± 39 mV

Analog Signal Sensitivity:

0.3 µV/graduation minimum

A/D Sample Rate:

Four channel A/D 24-bit sigma-delta conversion, up to 200 conv./sec. auto select

Resolution:

Internal: 1,500,000 counts

Display: 800,000

Digital I/O:

Two inputs: 12/24 VDC

Two outputs: 150 mA 48 VAC/150 mA 60 VDC

Serial Ports:

Modbus RTU or ASCII selectable/bidirectional (both ports)

(1) RS-485 for connection to a PC or weight repeater

(1) RS-232 for connection to a PC or printer

Analog Output (if equipped):

Opto isolated, 16-bit

0 to 20mA, 4 to 20mA (Maximum 350 ohm)

0 to 5VDC, 0 to 10VDC (Minimum 10,000 ohm)

Annunciators:

Net, center of zero, stability

Display:

Six-digit (10 mm), red LED

Keys/Buttons:

Five key, membrane panel, tactile feel Zero (Down), Tare (Up), Mode (Right), Print (Enter), C (On/Off)

Dimensions:

(L × W × H)

4.17 × 3.54 × 2.28 in

(106 × 90 × 58 mm)

Temperature:

5 °F to 104 °F (-15 °C to 40 °C)

Humidity:

85% non-condensing

Rating/Material:

Enclosure: NEMA Type 4, plastic

Clear cover: six PG9 cord grips

Warranty:

One-year limited

Approvals:

NTEP 20-046

Measurement Canada AM-6165C

OIML R76/2006-A-GB1-19.17

UKCA Marked

cULus Listed

Approvals



Measurement
Canada
Approved



Standard Features

- Up to four independent scales or four load cell inputs
- Quick menu for real and theoretical calibration
- Red LED display
- DIN rail mountable
- Configurable calibration and setup parameters from keyboard
- Calibration using linearization points
- Reading of the net, gross and tare weights, clearing, semi-automatic and preset tare, scale switch, setting of outputs application thresholds
- Diagnostic information via serial port, message display, printing, setting of APW in counting mode, digital input for key press
- Modbus RTU or ASCII protocol
- Easy configuration with Rice Lake Tools software

Part Number/Price

Part #	Description	Est. Weight	Price
202101	Indicator, SCT-1100-AN four load cell input with Analog Output	1 lb	\$560.00
197011	Indicator, SCT-1100-AN four load cell input with Analog Output in plastic enclosure	1 lb	\$675.00

NOTE: PN 182588 is superseded by 202101

Options/Accessories

Part #	Description	Est. Weight	Price
188483	SCT-1000 converter RS-232/485 to Ethernet TCP/IP and Modbus TCP. Does not have an A/D	1 lb	\$400.00
88792	12 VDC 1.2 A DIN rail mount power supply	1 lb	\$140.00
119244	24 VDC 1.3 A DIN rail mount power supply	1 lb	\$160.00



SCT-1000
Serial to Ethernet converter

SCT-2200

Signal Conditioning Transmitter



SCT2200 pictured with optional EtherNet/IP module

Approvals



Measurement
Canada
Approved



Standard Features

- HUB mode connects up to 16 transmitters to one fieldbus
- Two RS-485 port for "daisy-chain" network connection
- Quick menu for real and theoretical calibration
- Remote access through web browser for weight monitoring and calibration over EtherNet/IP™, PROFINET and Modbus TCP network
- Red LED display
- DIN rail mountable
- Calibration using linearization points
- Reading of the net, gross and tare weights, clearing, semi-automatic and preset tare setting of outputs application thresholds
- Diagnostic information via serial port, message display, printing, simulation of key pressure, Modbus RTU or ASCII protocol
- Printer management on second serial port available
- Multi-range function allows for subdividing the scale capacity in two, each up to 3,000 divisions
- Easy configuration with Rice Lake Tools software

Part Number/Price

Part #	Description	Est. Weight	Price
Transmitters			
202103 *	Indicator, SCT-2200 for scale input to be used with fieldbus module	1 lb	\$375.00
202104 *	Indicator, SCT-2200-AN with analog output	1 lb	\$500.00
Fieldbus			
182592	Fieldbus, SCT-2200, PROFINET module	1 lb	\$625.00
194343	Fieldbus, SCT-2200, Ethernet TCP/IP and Wi-Fi	1 lb	\$620.00
182593	Fieldbus, SCT-2200, PROFIBUS® module	1 lb	\$425.00
182591	Fieldbus, SCT-2200, EtherNet/IP™ module	1 lb	\$625.00
182596	Fieldbus, SCT-2200, DeviceNet® module	1 lb	\$625.00
182598	Fieldbus, SCT-2200, EtherCAT module	1 lb	\$620.00
182597	Fieldbus, SCT-2200, CANopen module	1 lb	\$620.00
196694	Fieldbus, SCT-2200, Modbus TCP module	1 lb	\$620.00
182599	Cable with RJ45 plugs, 6 in length	1 lb	\$15.00
212772 **	Fieldbus, SCT-2200, PROFIBUS module	1 lb	\$425.00

NOTE: PN 182587 is superseded by 202103 and PN 182589 is superseded by 202104.

*How to Order the SCT-2200 for use with fieldbus module

Order 1 RJ45 cable for every Scale module connected to a Fieldbus module.

** Compatible with 682 indicator

Options/Accessories

Part #	Description	Est. Weight	Price
88792	12 VDC 1.2 A DIN rail mount power supply	1 lb	\$140.00
119244	24 VDC 1.3 A DIN rail mount power supply	1 lb	\$160.00

Specifications

Power:

12/24 VDC

Power Consumption:

70 mA min to 100 mA max

Excitation Voltage:

5 VDC, 120 mA, 8 × 350 ohm load cells

Analog Signal Input Range:

± 39 mV

Analog Signal Sensitivity:

0.3 µV/graduation minimum

A/D Sample Rate:

One channel A/D 24-bit sigma-delta conversion, up to 200 conv/sec. auto select

Resolution:

Internal: 1,500,000 counts

Display: 800,000

Digital I/O:

Two inputs: 12/24 VDC

Two outputs: 150 mA 48 VAC/150 mA 60 VDC

Communication Ports:

(1) RS-485, (1) RS-232

Analog output (if equipped):

Opt isolated, 16-bit

0-20 mA, 4-20 mA (Maximum 350 ohm)

0-5 VDC, 0-10 VDC (Minimum 10,000 ohm)

Annunciators:

Net, center of zero, stability

Display:

Six-digit 0.31 in (8 mm), red LED

Keys/Buttons:

Five key, tactile feel

Zero (Down), Tare (Up), Mode (Right), Print (Enter),

C (On/Off)

Dimensions:

(L × H × D)

4.72 × 4.52 × 0.98 in

(120 × 115 × 25 mm)

Temperature:

Certified: 14 °F to 104 °F (-10 °C to 40 °C)

Operating: 14 °F to 122 °F (-10 °C to 50 °C)

Humidity:

85% non-condensing

Rating/Material:

NEMA Type 1 plastic pluggable connectors

Weight:

1 lb (0.5 kg)

Warranty:

One-year limited

Approvals:

NTEP 20-046

Measurement Canada AM-6165C

OIML R76/2006-A-GB1-19.17

UKCA Marked

cULus Listed

SCT-3300

Signal Conditioning Transmitter



Approvals



Part Number/Price

Part #	Description	Est. Weight	Price
Transmitters			
188725	Indicator, SCT-3300 four load cell input with Analog Output	1 lb	\$400.00

Options/Accessories

Part #	Description	Est. Weight	Price
88792	12 VDC 1.2 A DIN rail mount power supply	1 lb	\$140.00
119244	24 VDC 1.3 A DIN rail mount power supply	1 lb	\$160.00

Standard Features

- Powers up to six (350 ohm) load cells in parallel
- Analog amplifier and transmitter
- Analog output: 0-20 mA, 4-20 mA, 0-10 V
- Mounting on Omega/DIN rail for back panel or junction box

Specifications

Power:

Input: 20 to 28 VDC

Power Consumption:

8 W

Excitation Voltage:

10 VDC, 170 mA, 6 × 350 ohm load cells

Analog Signal Input Range:

3.5 to 24 mV

Analog Signal Sensitivity:

0.3 μ V/graduation minimum
1.0 μ V/graduation recommended

A/D Sample Rate:

300 Hz

System linearity:

± 0.01% full scale

Analog Output (if equipped):

Opto isolated
0-20 mA, 4-20 mA (max 300 ohm)
0-10 VDC (min 10,000 ohm)

Dimensions:

(L × W × H)
4.56 × 3.72 × 2.4 in
(114 × 93 × 60 mm)

Temperature:

Operating: 14 °F to 122 °F (-10 °C to 50 °C)

Humidity:

85% non-condensing

Rating/Material:

DIN rail mount: NEMA Type 1

Weight:

0.5 lb (0.2 kg)

Warranty:

One-year limited

Approvals:

UKCA Marked

SCT-1PX

Transmitter with Integrated Fieldbus and Web Server

NEW



INDICATORS /
CONTROLLERS

Standard Features

- Integrated web server allows complete diagnostics, calibration and remote configuration
- Real-time warning of any faults or disconnections of the load cell
- Configuration and calibration through Rice Lake Tools, XSpeed software or display navigation
- Power supply circuit with protections against overloads, polarity reversal and short circuits, specific for industrial environments
- Micro-USB communication and configuration port accessible from display for quick programming, diagnostics and data backup
- All scale data and adjustments are available through integrated fieldbus with up to 120 updates per second
- Removable terminal blocks to simplify wiring in the electrical panel
- Modbus RTU protocol integrated, up to 110 updates per second

Part Number/Price

Part #	Description	Est. Weight	Price
229189	SCT1PX-AN		\$500.00
229190	SCT1PX-PRONET		\$750.00
229191	SCT1PX-ETHIP		\$750.00
229192	SCT1PX-MODTCP		\$750.00

Options/Accessories

Part #	Description	Est. Weight	Price
88792	12 VDC 1.2 A DIN rail mount power supply	1 lb	\$140.00
119244	24 VDC 1.3 A DIN rail mount power supply	1 lb	\$160.00
Consult	Alibi Memory for type-approved communication to PC/PLC (fiscal memory, max 120,000 weighs) built-in real time clock to print the date/time with PCB, screw terminal, plastic box		Consult
Consult	Real time clock for printing/displaying of date and time		Consult

Specifications

Power:

12 to 24 VDC

Power Consumption:

5 W

Excitation Voltage:

5 VDC, 230 mA

up to 16 × 350 ohm load cells

Analog Signal Input Range:

±39 mV

Analog Signal Sensitivity:

0.3 µV/graduation minimum

A/D Sample Rate:

24-bit A/D

Single channel up to 4,800 Hz

Resolution:

Internal: 4,000,000 counts

Display: up to 800,000

Up to 8 linearization points

Digital I/O:

Two inputs: 12/24 VDC

Two outputs*: 500 mA, up to 48 VAC or 60 VDC

*(up to six with option for analog version only)

Serial Ports:

One micro-USB port (device) for PC configuration

One RS-485

EtherNet /IP™ or PROFINET IO or Modbus TCP

(Fieldbus version)

Analog Output (if equipped):

Opt. isolated, 16-bit

0 to 20 mA, 4 to 20 mA (maximum 350 ohm)

0 to 5 VDC, 0 to 10 VDC (minimum 10,000 ohm)

Annunciators:

Nine LEDs

Display:

Six-digit 0.56 in (14.2 mm), red LED

Keys/Buttons:

Five tactile keys

Zeroing, Tare, function mode, manual data printing/sending, On/Stand-by

Dimensions:

(L × W × H)

(100 × 53 × 136 mm)

Temperature:

Certified: 14 °F to 104 °F (-10 °C to 40 °C)

Operating: -4 °F to 140 °F (-20 °C to 60 °C)

Humidity:

85% RH, non-condensing

Rating/Material:

Aluminum IP65

Warranty:

One-year limited

Approvals:

CE-M EN 45501

UL



Standard Features

- Load cell status diagnostics
- USB port for quick programming
- Integrated fieldbus and web server for configuration, diagnostics and data backup
- Process up to 4800 weight readings per second. The high speed allows an extremely accurate weight filtering even with weighing being performed in milliseconds.
- Up to 120 updates per second on Fieldbus
- New power supply circuit of the load cells (up to 16) for a better weighing stability
- Power supply circuit with protections against overloads, polarity reversal and short circuits, specific for industrial environments
- Micro-USB communication port for configuration, diagnostics and data backup is available on all versions
- Modbus RTU protocol integrated on all versions, up to 110 updates per second
- Real-time warning of any faults or disconnections of the load cell
- The integrated web server allows full diagnostics, calibration and remote configuration of the weight transmitter from an Ethernet network
- Calibration via theoretical (mV/V), with sample weights, web server or xSpeed software tool
- Easy configuration with Rice Lake Tools software

Optional xSpeed Software

- Customization of the weighing filter, to maximize the speed and accuracy in static and dynamic applications
- Graphical weighing analysis for the identification of mechanical disturbances and vibrations. Oscilloscope function for system diagnostics and filter optimization.

Part Number/Price

Part #	Description	Est. Weight	Price
216820	SCT-1SX-AN weight transmitter and analog output for DIN rail mount with digital I/O 2 IN and 4 OUT		\$895.00
229550	SCT-1SX-ETHIP weight transmitter and EtherNet/IP™ port for DIN rail mount with digital I/O 2 IN and 4 OUT, integrated web server		\$1,295.00
216821	SCT-1SX-PRONET weight transmitter and PROFINET port for DIN rail mount with digital I/O 2 IN and 4 OUT, integrated web server		\$1,095.00
216823	SCT-1SX-MODTCP weight transmitter and Modbus TCP port for DIN rail mount with digital I/O 2 IN and 4 OUT, integrated web server		\$1,295.00

Options/Accessories

Part #	Description	Est. Weight	Price
88792	12 VDC 1.2 A DIN rail mount power supply	1 lb	\$140.00
119244	24 VDC 1.3 A DIN rail mount power supply	1 lb	\$160.00
Consult	Alibi Memory for type-approved communication to PC/PLC (fiscal memory, max 120,000 weighs) built-in real time clock to print the date/time with PCB, screw terminal, plastic box		Consult
Consult	Real time clock for printing/displaying of date and time		Consult

Specifications

Power:

12 to 24 VDC, 5 W

Power Consumption:

70 mA min to 100 mA max

Excitation Voltage:

5V, 250 mA, 16 × 350 ohm load cells

Analog Signal Input Range:

±39 mV

Analog Signal Sensitivity:

High resolution 0.01 µV/d

Legal for trade 0.3 µV/e

A/D Sample Rate:

Up to 4800 Hz

Resolution:

Internal: 1,500,000 counts

Display: 800,000

Legal for Trade divisions

Up to 10,000e or multi-field 2 × 3,000e

Digital I/O:

Two inputs, configurable: 12 to 24 VDC

Four outputs, configurable: 150 mA 48 VAC/150 mA 60 VDC

Communication Ports:

One RS-485, one RS-232,

one micro-USB port (device)

Serial port update rate: up to 1600 Hz

Fieldbus update rate: up to 120 Hz

Analog Output (if equipped):

OPTO isolated, 16-bit

0 to 20 mA, 4 to 20 mA (maximum 350 ohm)

0 to 5 VDC, 0 to 10 VDC (minimum 10,000 ohm)

Annunciators:

Net, center of zero, stability

Display:

Six-digit (8 mm), red LED

Keys/Buttons:

Five key, membrane panel

Zero (down), Tare (up), Mode (right), Print (enter),

C (on/off)

Dimensions:

(L × W × H)

4.72 × 0.9 × 4.0 in

(120 × 23 × 112 mm)

Temperature:

Certified: 14 °F to 104 °F (-10 °C to 40 °C)

Operating: -4 °F to 140 °F (-20 °C to 60 °C)

Humidity:

85% non-condensing

Rating/Material:

Enclosure: ABS plastic

Warranty:

One-year limited

Approvals:

CE-M EN 45501

2014/30/EU EMC

2014/35/EU LVD

2011/65/EU RoHS

OIML R61 - MID

OIML R76

SCT-4X

Integrated Fieldbus Transmitter



Standard Features

- Manage up to four load cells (one scale) or four scales with load cell feed circuit for greater weighing stability
- Process to 2,600 weight readings per second for single-channel
- Integrated web server allows complete diagnostics, calibration and remote configuration (not available on AN models)
- 14.2 mm display with new configuration menu to simplify calibration and configuration
- All data and adjustments of each scale are available through integrated fieldbus with up to 120 updates per second
- Frontal micro-USB communication port for configuration, diagnostics and data backup
- Removable terminal blocks to simplify wiring in the electrical panel
- RS-485 communication port always available on all versions
- Power supply circuit with protections, specific for industrial environment

Optional xSpeed Software

- Customization of the weighing filter, to maximize the speed and accuracy in static and dynamic applications
- Graphical weighing analysis for the identification of mechanical disturbances and vibrations
- Oscilloscope function for system diagnostics and filter optimization

Part Number/Price

Part #	Description	Est. Weight	Price
216824	SCT-4XAN high speed weight transmitter and analog output for DIN rail mount with digital I/O, 2 IN, 2 OUT, keypad, LED display (does not include web server)		\$940.00
216825	SCT-4X-ETHIP high speed 4 channel weight transmitter and EtherNet/IP™ port for DIN rail mount with digital I/O 2 IN, 2 OUT, 5-key keypad, LED display		\$1,175.00
216826	SCT-4X-MODTCP high speed 4 channel weight transmitter and Modbus TCP port for DIN rail mount with digital I/O 2 IN, 2 OUT, 5-key keypad, LED display		\$1,155.00
216827	SCT-4X-PRONET high speed 4 channel weight transmitter and PROFINET port for DIN rail mount with digital I/O 2 IN, 2 OUT, 5-key keypad, LED display		\$1,125.00

Options/Accessories

Part #	Description	Est. Weight	Price
88792	12 VDC 1.2 A DIN rail mount power supply	1 lb	\$140.00
119244	24 VDC 1.3 A DIN rail mount power supply	1 lb	\$160.00
Consult	Alibi Memory for type-approved communication to PC/PLC (fiscal memory, max 120,000 weighs) built-in real time clock to print the date/time with PCB, screw terminal, plastic box		Consult
Consult	Real time clock for printing/displaying of date and time		Consult

Dimensions

SCT-4X					
A	4.17 in (106 mm)	E	1.77 in (45 mm)	I	0.20 in (5 mm)
B	1.77 in (45 mm)	F	1.30 in (33 mm)	J	0.59 in (15 mm)
C	3.54 in (90 mm)	G	0.54 in (13.7 mm)	K	0.39 in (10 mm)
D	1.38 in (35 mm)	H	2.28 in (58 mm)		

Specifications

Power:

12 to 24 VDC

Power Consumption:

5 W

Excitation Voltage:

5 VDC, 230 mA
up to 16 × 350 ohm cells

Analog Signal Input Range:

± 39 mV

Analog Signal Sensitivity:

0.3 µV/graduation minimum

A/D Sample Rate:

24-bit A/D
Single channel up to 2,600 conv/sec
4 channels up to 100 conv/sec

Resolution:

Internal: 3,000,000 counts
Display: up to 800,000
Up to 8 linearization points

Digital I/O:

Two inputs: 12/24 VDC
Two outputs: 150 mA 48 VAC/ 150 mA 60 VDC

Communication Ports:

1 Micro-USB port (device) for PC configuration
(1) RS-485, (1) RS-232

Analog Output (if equipped):

OPTO isolated, 16-bit
0 to 20 mA, 4 to 20 mA (maximum 350 ohm)
0 to 5 VDC, 0 to 10 VDC (minimum 10,000 ohm)

Annunciators:

Nine LEDs

Display:

Six-digit 0.31 in (8 mm), red LED

Keys/Buttons:

Five tactile keys
Zeroing, Tare, function mode, manual data printing/
sending, on/stand-by

Dimensions:

(L × W × H)
4.17 × 2.20 × 4.64 in
(106 × 56 × 118 mm)

Temperature:

Certified: 14 °F to 104 °F (-10 °C to 40 °C)
Operating: -4 °F to 140 °F (-20 °C to 60 °C)

Humidity:

80% RH, non-condensing

Rating/Material:

NEMA Type 1 plastic pluggable connectors
ABS

Weight:

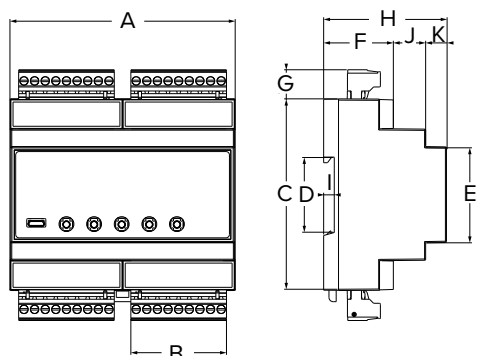
1 lb (0.5 kg)

Warranty:

One-year limited

Approvals:

CE-M EN 45501





SCT-10 in Plastic Enclosure

Approvals



Standard Features

- Converts digital weight to analog output
- Sums four input channels in parallel
- Theoretical calibration, real-weigh calibration, linearity calibration
- Push-button or preset tare
- Full-scale analog output with zero setting and PLC correction of analog signal
- Displays weight, configuration, calibration and error conditions
- DIN-rail mounting, suitable for back panel
- Two digital inputs, two digital outputs
- Supports ASCII or Modbus RTU protocols

Part Number/Price

Part #	Description	Est. Weight	Price
129393	SCT-10 converter with Analog Output	1 lb	\$585.00
129394	SCT-10 converter with Analog Output in enclosure	1 lb	\$760.00

Options/Accessories

Part #	Description	Est. Weight	Price
88792	12 VDC 1.2 A DIN rail mount power supply	1 lb	\$140.00
119244	24 VDC 1.3 A DIN rail mount power supply	1 lb	\$160.00
131129	Installation manual	1 lb	\$25.00
199687	DIN rail clip right & left end clamp		\$11.00

Specifications

Power:

Input: 12 to 24 VDC

Power Consumption:

5 W

Excitation Voltage:

5 VDC, 120 mA, 8 × 350 ohm load cells

Analog Signal Input Range:

± 19.5 mV

Analog Signal Sensitivity:

0.3 µV/graduation minimum

1.0 µV/graduation recommended

A/D Sample Rate:

80 Hz

Resolution:

Internal: 16,000,000 counts

Display: 999,999

System Linearity:

± 0.01% full scale

Digital I/O:

2 inputs 5-24 VDC, 2 outputs

24 VDC/60 mA

N.O. or N.C. (solid state)

Communication Ports

RS-485 or RS-232 simplex supports

up to 115,200 bps

Analog Output:

Opto isolated, 16 bit

0-20 mA, 4-20 mA (max 300 ohm)

0-10 VDC, 0-5 VDC, -10 to 10 VDC,

5 to 5 VDC, (min 10 k ohm)

Annunciators:

Net, center of zero, stability, kg, g, lb

Display:

0.3 in (8 mm), six-digit, seven-segment LED

Keys/Buttons:

4-key membrane panel, tactile feel

Zero, Tare, Print, Menu, Escape,

Left and Up Navigation, Enter

Dimensions:

(L × W × H)

DIN Rail Mount: 4.84 × 3.62 × 1.96 in

(123 × 92 × 50 mm)

Enclosure: 6.69 × 5.51 × 3.74 in

(170 × 140 × 95 mm)

Temperature & Humidity:

Operating Temperature:

-4 °F to 140 °F (-20 °C to 60 °C)

Humidity: 85% non-condensing

Rating/Material:

DIN rail mount: NEMA Type 1

Enclosure: NEMA Type 4/IP67, plastic

Clear cover: six PG9 cord grips

Weight:

1 lb (0.5 kg)

Warranty:

One-year limited

Approvals:

cULus Recognized

SCT-20

Signal Conditioning Transmitter



Approvals



Standard Features

- Space saving, vertical shape with DIN-rail mounting
- Displays weight, configuration, calibration and error conditions
- Theoretical calibration, real-weigh calibration, linearity calibration
- Push-button or preset tare
- Converts digital weight to analog output or optional DeviceNet® or PROFIBUS® or EtherNet/IP™ protocol
- Supports ASCII or Modbus RTU protocols
- Full-scale analog output with zero setting and PLC correction of analog signal
- Bit swapping selection for little endian and big-endian format
- Two digital inputs, three digital outputs
- One serial port, RS-232 transmit only, or RS-485 half-duplex connection

Part Number/Price

Part #	Description	Est. Weight	Price
129396	SCT-20 converter with Analog Output	1 lb	\$600.00
129397	SCT-20 converter with DeviceNet®	1 lb	\$725.00
129558	SCT-20 converter with PROFIBUS® DP	1 lb	\$785.00
129398	SCT-20 converter with EtherNet/IP™	1 lb	\$1,000.00
132534	SCT-20 converter with Ethernet TCP/IP	1 lb	\$1,055.00
156903	SCT-20 converter with Modbus TCP	1 lb	\$1,000.00
131128	Installation manual	1 lb	\$25.00

EtherNet/IP and Modbus output changed to Dual Port in 2019.

Options/Accessories

Part #	Description	Est. Weight	Price
88792	12 VDC 1.2 A DIN rail mount power supply	1 lb	\$140.00
119244	24 VDC 1.3 A DIN rail mount power supply.	1 lb	\$160.00

Specifications

Power:

Input: 12 to 24 VDC

Power Consumption:

5 W

Excitation Voltage:

5 VDC, 120 mA, 8 × 350 ohm load cells

Analog Signal Input Range:

± 39 mV

Analog Signal Sensitivity:

0.3 µV/graduation minimum

1.0 µV/graduation recommended

A/D Sample Rate:

300 Hz

Resolution:

Internal: 16,000,000 counts

Display: 999,999

System linearity:

± 0.01% full scale

Digital I/O:

2 inputs 5 to 24 VDC, 3 outputs 115 VAC/150 mA

N.O. or N.C. (dry contact)

Communication Ports:

RS-232 transmit only, or RS-485 half duplex

Supports up to 115,200 bps

Analog Output:

Opto isolated, 16 bit

0-20 mA, 4-20 mA (max 300 ohm)

0-10 VDC, 0-5 VDC (min 10 k ohm)

Display:

0.3 in (8 mm), six-digit, seven-segment LED

Annunciators: Net, center of zero, stability,

kg, g, lb

Keys/Buttons:

4-key membrane panel, tactile feel
zero, tare, print, menu, escape, left and up
navigation, enter

Dimensions

(W × H × D)

4.72 × 4.52 × 0.98 in

(120 × 115 × 25 mm)

Temperature:

Operating: -4 °F to 140 °F (-20 °C to 60 °C)

Humidity:

85% non-condensing

Rating/Material:

Enclosure: NEMA Type 1 plastic

pluggable connectors

Weight:

1 lb (0.5 kg)

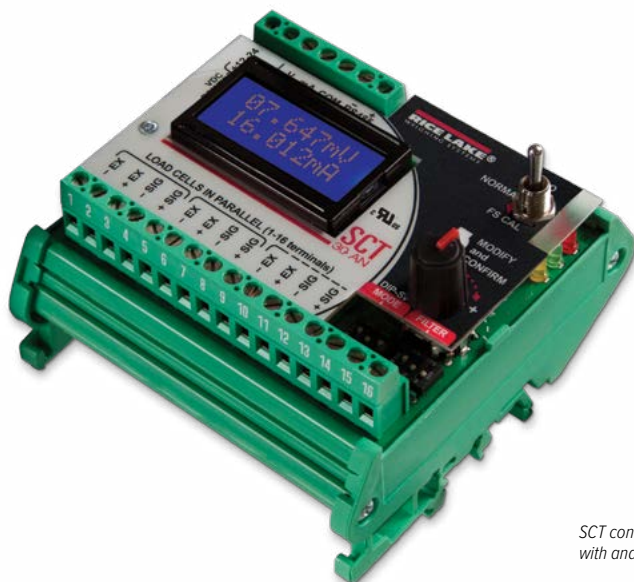
Warranty:

One-year limited

Approvals:

NTEP 14-083

cULus Recognized



SCT converter
with analog output

Approvals



Part Number/Price

Part #	Description	Est. Weight	Price
156794	SCT-30 converter with Analog Output	1 lb	\$475.00
156834	SCT-30 converter with Analog Output in enclosure	1 lb	\$630.00

Options/Accessories

Part #	Description	Est. Weight	Price
88792	12 VDC 1.2 A DIN rail mount power supply	1 lb	\$140.00
119244	24 VDC 1.3 A DIN rail mount power supply	1 lb	\$160.00
131129	Installation manual	1 lb	\$25.00
199707	DIN rail clip right & left end clamp		\$11.00

Standard Features

- LCD display
- Powers up to eight (350 ohm) load cells in parallel (with a 24-bit A/D converter)
- A/D converter 24-bit 4.8 kHz
- 16-bit analog output: 0-20 mA, 4-20 mA, 0-5 V, 0-10 V, ± 5 V and ± 10 V
- Mounting on Omega/DIN rail for back panel or junction box
- Diagnostic message for load cell disconnect and over-capacity errors

Specifications

Power:

Input: 12 to 24 VDC

Power Consumption:

3 W

Excitation Voltage:

5 VDC, 120 mA, 8 \times 350 ohm load cells

Analog Signal Input Range:

± 39 mV

Analog Signal Sensitivity:

0.3 μ V/graduation minimum

1.0 μ V/graduation recommended

A/D Sample Rate:

300 Hz

Resolution:

Internal: 16,000,000 counts

System Linearity:

$\pm 0.01\%$ full scale

Communication Ports:

RS-485

Analog Output:

Opto isolated, 16 bit
0-20 mA, 4-20 mA (max 300 ohm)
0-10 VDC, 0-5 VDC (min 10 k ohm)

Display:

Eight-digit alphanumeric tow line LCD, 5 mm high

Keys/Buttons:

Control knob and DIP switches

Dimensions:

(L \times W \times H)
3.74 \times 3.54 \times 2.36 in
(95 \times 90 \times 60 mm)

Temperature:

Operating: -4°F to 140°F (-20°C to 60°C)

Humidity:

85% non-condensing

Rating/Material:

DIN rail mount: NEMA Type 1

Weight:

1 lb (0.5 kg)

Warranty:

One-year limited

Approval:

cULus Recognized

SCT-40

Signal Conditioning Transmitter



Approvals



Standard Features

- LCD display
- Supports up to eight independent reading channels for load cells
- Displays weight, configuration, calibration and error conditions
- DIN rail mounting
- Theoretical calibration, real-weight calibration and linear calibration
- Push-button or preset tare
- Converts digital weight to analog output or optional DeviceNet®, PROFIBUS®, EtherNet/IP™, PROFINET and Modbus TCP protocols
- Supports ASCII or Modbus RTU protocols
- Bit swapping selection for little endian and endian format
- Three digital inputs, five digital outputs
- One serial port, RS-485 half duplex or RS-232 transmit-only connection

SCT-40AN only

- Full scale analog output with zero setting and PLC correction of analog signal

Part Number/Price

Part #	Description	Est. Weight	Price
170470	SCT-40 with Analog Output	1 lb	\$800.00
170471	SCT-40 with DeviceNet®	1 lb	\$1,045.00
170472	SCT-40 with PROFIBUS®	1 lb	\$1,045.00
170473	SCT-40 with EtherNet/IP™	1 lb	\$1,085.00
170474	SCT-40 with Ethernet TCP/IP	1 lb	\$1,045.00
170475	SCT-40 with Modbus TCP	1 lb	\$1,085.00
170476	SCT-40 with PROFINET IO	1 lb	\$1,050.00

EtherNet/IP and Modbus output changed to Dual Port in 2019

Options/Accessories

Part #	Description	Est. Weight	Price
88792	12 VDC 1.2 A DIN rail mount power supply	1 lb	\$140.00
119244	24 VDC 1.3 A DIN rail mount power supply.	1 lb	\$160.00
131128	Installation manual	1 lb	\$25.00

Specifications

Power:

Input: 12 to 24 VDC

Power Consumption:

5 W

Excitation Voltage:

5 VDC, 240 mA, 16 x 350 ohm load cells

Analog Signal Input Range:

± 39 mV

Analog Signal Sensitivity:

0.3 µV/graduation minimum
1.0 µV/graduation recommended

A/D Sample Rate:

600 Hz

Resolution:

Internal: 16,000,000 counts
Display: 999,999

System linearity:

± 0.01% full scale

Digital I/O:

3 inputs 5 to 24 VDC, 5 outputs, 115 VAC/150 mA

Communication Ports

RS-232 transmit only, or RS-485 half duplex
Supports up to 115,200 bps

Analog Output (SCT-40AN only):

Opto isolated, 16 bit
0-20 mA, 4-20 mA (max 300 ohm)
0-10 VDC, 0-5 VDC (min 10 k ohm)

Display:

Backlit graphic LCD, transmissive
128 x 64 pixel resolution, 60 x 32 mm visible area

Keys/Buttons:

Five-key tactile keypad
Test, zero, tare, print menu, escape, left and up, navigator, enter

Dimensions:

(L x W x H)
5.82 x 3.62 x 2.36 in
(148 x 92 x 60 mm)

Temperature:

Operating: -4 °F to 140 °F (-20 °C to 60 °C)

Humidity:

85% non-condensing

Rating/Material:

DIN rail mount: NEMA Type 1

Weight:

1 lb (0.5 kg)

Warranty:

One-year limited

Approvals:

cULus Recognized



Standard Features

- High resolution design
- Used in high precision testing, troubleshooting and calibrating digital weight indicators
- Switchable offset
- Painted die-cast enclosure

Part Number/Price

Part #	Description	Price
157323	Ranger 7 high resolution calibration simulator	\$1,050.00

Options/Accessories

Part #	Description	Price
21116	Cable (4 ft) with banana plugs	\$70.00

Specifications

Vernier:

Two ranges; one is equal to the sum of the 0.05 mV/V switch and the 0 to 0.5 mV/V switch. The other is the sum of the 0.5 mV/V, 0.1 mV/V and 0.01 mV/V switches.

Load Impedance:

Three settings:
X0.5: 700 ohm
X1: 350 ohm (one standard load cell)
X4: 87.5 ohm (four load cell platform)

Linearity:

$\pm 0.01\% + 1\mu V$

Connectors:

Low Thermal Electronics, Type 2758 precision gold plated binding posts, standard banana jacks or 14 AWG wire

Temperature Coefficient:

5 ppm/°C

Zero Offset:

± 0.0005 mV/V

Output Range:

0 to 3 mV/V in 0.01 mV/V steps

LED Annunciators:

EXC +
EXC -
Offset ON
0.5 mV/V
0.1 mV/V

Warranty:

One-year limited