

Specifications

Load Cell, OIML Approved:

Stainless steel and hermetically sealed, IP69K

Output Impedance:

350 ohms

Overload Protection:

Five point, independently adjusted

Cable Length:

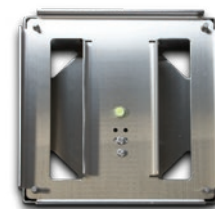
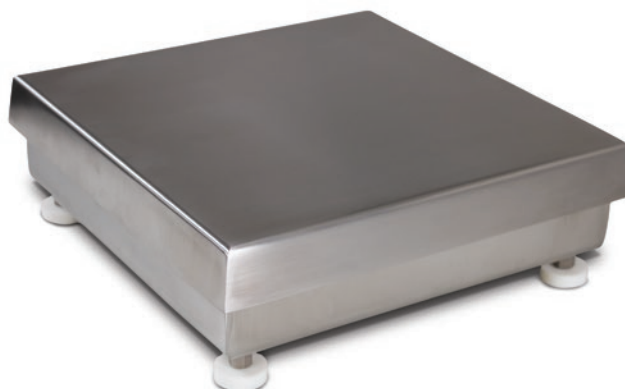
864 mm or 3 m

Compensated Temperature Range:

-10°C to 40°C

Warranty:

Two-year limited including water ingress



Standard Features

- 304 stainless steel construction
- Five point overload protection
- Specially designed adjustable support feet provide exceptional traction and will not scratch surfaces
- IP69K, stainless steel hermetically sealed load cell

Approvals



Additional models are available with the approvals shown here
Please consult the factory for part numbers.

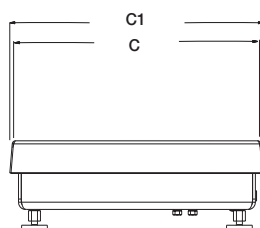
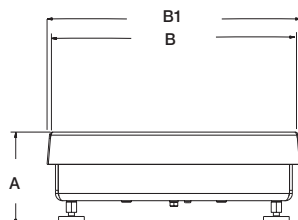


Measurement
Canada
Approved



Part Number/Price

Part #	Capacity	Dimensions L x W	L1/W1	Est. Weight	Price
864 mm cable					
124467	3 kg	254 x 254 mm	263 mm	6,4 kg	Consult
124468	6 kg	254 x 254 mm	263 mm	6,4 kg	Consult
124469	15 kg	254 x 254 mm	263 mm	6,4 kg	Consult
124470	15 kg	305 x 305 mm	314 mm	7,7 kg	Consult
124471	30 kg	305 x 305 mm	314 mm	7,7 kg	Consult
124472	60 kg	305 x 305 mm	314 mm	7,7 kg	Consult
3 m cable					
124461	3 kg	254 x 254 mm	263 mm	6,4 kg	Consult
124462	6 kg	254 x 254 mm	263 mm	6,4 kg	Consult
124463	15 kg	254 x 254 mm	263 mm	6,4 kg	Consult
124464	15 kg	305 x 305 mm	314 mm	7,7 kg	Consult
124465	30 kg	305 x 305 mm	314 mm	7,7 kg	Consult
124466	60 kg	305 x 305 mm	314 mm	7,7 kg	Consult



Options/Accessories

Part #	Description	Price
112044	305 mm column for CW-90, CW-90X, 480 and 482 Legend™ Series	Consult
112045**	257 mm column for CW-90, CW-90X, 480 and 482 Legend™ Series	Consult
N/A	Installation, testing, configuration and verification	Consult factory

** Not recommended for use with scale bases smaller than 305 x 305 mm