

IQ plus® 590-DC Digital Weight Indicator

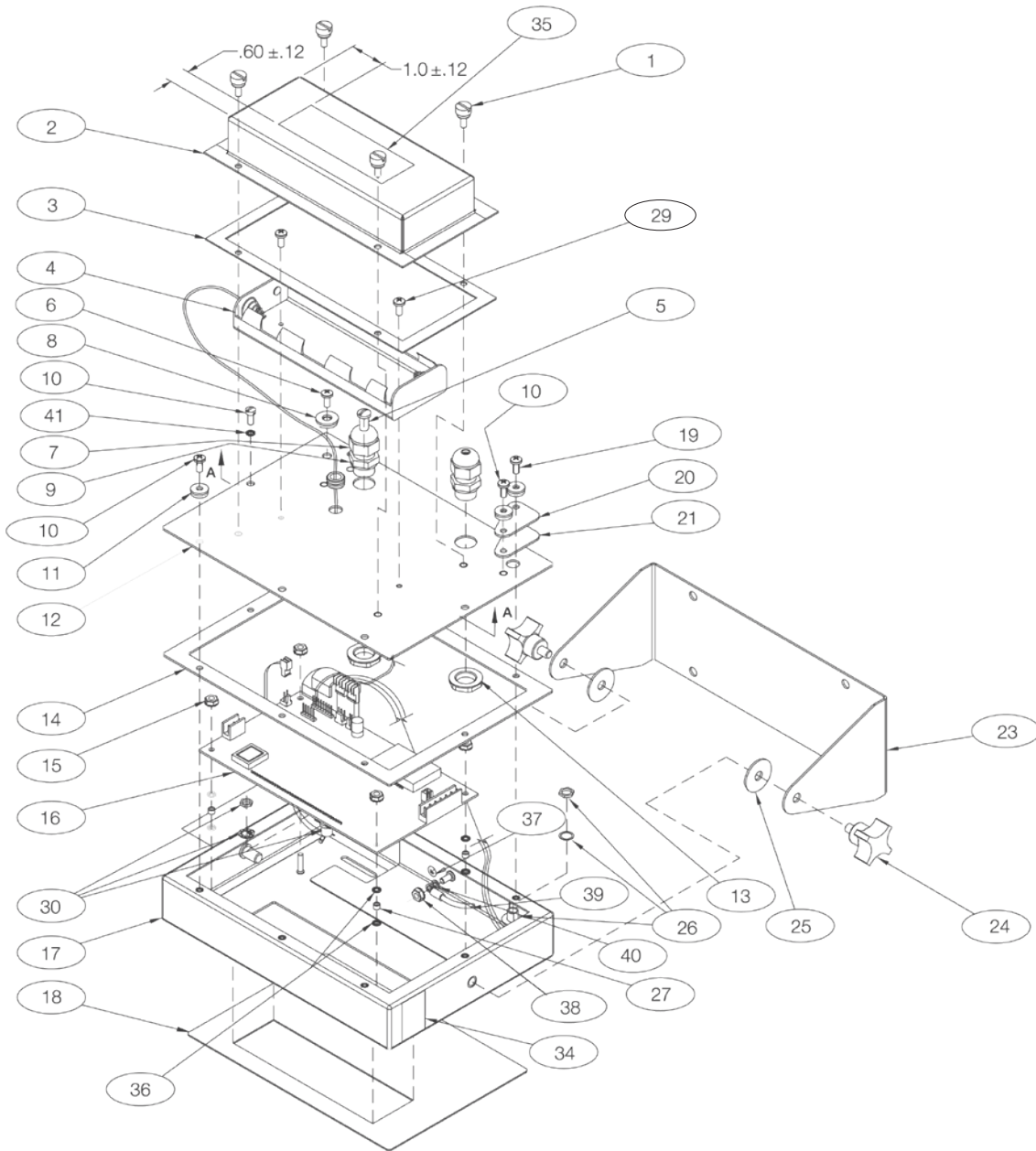


Part Number/Price

Ref#	Part#	Description	Price
	49978	AC adapter, 115VAC	Consult
	49977	AC adapter, 230VAC (requires plug 104782)	Consult
	104782	230VAC European style plug	Consult
	51778	Installation manual	Consult
	52754	Parts kit	Consult
Components of Part# 52754			
	14626	Nut, KEP 8 - 32 NC x hex	Consult
	14862	Screw, 8 - 32 NC x 3/8	Consult
	15133	Washer, lock No. 8, type A	Consult
	15888	Terminal block, 3 position	Consult
	23165	Terminal block, 7 position	Consult
	30623	Screw, Machine 8 - 32 NC x 7/16	Consult
	42149	Bumpers, rubber	Consult
	94422	Label, capacity	Consult
	45042	Washer, bonded sealing, SST	Consult
	52753	Label, identification	Consult
	53374	Label, annunciators	Consult
	67550	Clamp, ground cable shield	Consult
	66730	Filter, snap-on ferrite, CE	Consult
1	49520	Battery cover thumb screws	Consult
2	47939*	Battery cover, 4" x 4.5" (old style)	Consult
	71352	Battery cover, 3" x 7" (new style)	Consult
3	49557	Battery cover gasket (old style)	Consult
	71354	Battery cover gasket (new style)	Consult
4	49909	Battery holder assembly metal	Consult
	71448	Battery holder assembly plastic	Consult
5	19538	Cable grip plug	Consult
6	42640	Set-up switch access screw, 1/4 x 28 NF x 1/4	Consult
7	15626	Cable grips, PG9	Consult
8	44676	Sealing washer for set-up switch access screw, # 14	Consult
9	30375	Nylon seal rings for cable grips	Consult
10	14862	Screws, 8 - 32 NC x 3/8	Consult
11	45042	Sealing washers, no. 8	Consult
12	51970	Enclosure backplate (old style) (obsolete)	Consult
	71435	Enclosure backplate (new style)	Consult
13	15627	Lock nuts, PCN9	Consult
14	52382	Backplate gasket	Consult
15	14626	Nut, KEP, 6 - 32 NC hex	Consult
16	52469	Display and CPU board assembly	Consult
Component of Part# 52469			
	47137	Display 6-digit	Consult
	52564	Eprom	Consult
	71631	IC, A/D	Consult
17	51971	Enclosure	Consult
18	51972	Overlay membrane panel	Consult
19	49953	Screw, 8 - 32 NC x 1/2	Consult
20	49906	AC adapter port cover	Consult
21	49904	AC adapter port gasket	Consult
23	53073	Tilt stand	Consult
24	30342	Four-cornered wing knobs for tilt stand (old style)	Consult
	68403	Two-cornered wing knobs for tilt stand (new style)	Consult
25	15144	Nylon washers for tilt stand, 1/4 x 1 x 1/16	Consult
26	49908	AC adapter connector assembly	Consult
27	15365	Brass spacers for board mounting	Consult
29	14825	Screws, 4 - 40 NC x 1/4	Consult
30	49910	Set-up switch assembly	Consult
36	15130	Lock washers, internal tooth, No. 6, Type A	Consult
38	14626	Nut, KEP, 8 - 32 NC hex	Consult
39	45043	Ground wire, 4", No. 8	Consult

(See Diagram IQ plus 590-DC-A)

IQ plus® 590-DC Digital Weight Indicator



IQ plus 590-DC-A

Indicators/Controllers