

Pipe Lever Scales

TABLE OF CONTENTS

| | |
|------------------------|-----|
| PIPE LEVER SCALE | 808 |
|------------------------|-----|

Product names, logos, brands and other trademarks featured or referred to within this publication are the property of their respective trademark holders.

Pipe Lever Scale



Custom sizes fit your tank/hopper system for fewer modifications and less installation time.

Specifications

End Load Capacity:
100% full scale

mV/V Output:
1.50 - 1.87 mV/V nominal

Cable Length:
20 ft (6.1 m)

Warranty:
One-year limited warranty

Approvals:
NTEP CC 94-126 Model PLS-XXYY-ZZK
Class III/IIIL, 5000
Measurement Canada Approved, AM-5114,
Legal For Trade on sizes greater than 1.6 m,
or a capacity greater than 10,000 kg

Standard Features

- NTEP Certified and Measurement Canada Approved models available
- RL20000 alloy steel load cell standard (prices include load cell and ITCM load cell assembly)
- Mild steel construction, black paint finish
- Stainless steel, hermetically sealed load cells available
- Custom sizes and capacities available from 5,000 lb to 60,000 lb

APPROVALS



Part Number/Price

| Part # | Dimensions | Est. Weight | Price |
|----------------------------------|--------------------|-------------|------------|
| 25,000 lb | | | |
| 29587 | 62 5/8 x 62 5/8 in | 532 lb | \$4,300.00 |
| 29586 | 60 1/2 x 66 in | 528 lb | \$4,300.00 |
| 29588 | 66 1/2 x 91 in | 640 lb | \$4,300.00 |
| 29589 | 64 x 64 in | 538 lb | \$4,300.00 |
| 35008 | 62 x 92 in | 561 lb | \$4,300.00 |
| 35009 | 62 x 105 in | 720 lb | \$4,300.00 |
| 40409 | 72 x 72 in | 618 lb | \$4,300.00 |
| 83433 | 64 3/4 x 64 3/4 in | 567 lb | \$4,300.00 |
| 25,000 lb Stainless Steel | | | |
| 46264 | 62 5/8 x 62 5/8 in | 405 lb | \$9,700.00 |
| 46265 | 60 1/2 x 66 in | 550 lb | \$9,700.00 |
| 46266 | 66 1/2 x 91 in | 610 lb | \$9,700.00 |
| 50172 | 64 x 64 in | 550 lb | \$9,700.00 |
| 50173 | 62 x 92 in | 680 lb | \$9,700.00 |
| 50174 | 62 x 105 in | 720 lb | \$9,700.00 |
| 40,000 lb | | | |
| 39152 | 5 x 5 ft | 1,885 lb | \$9,900.00 |
| 39153 | 6 x 6 ft | 1,975 lb | \$9,900.00 |
| 39154 | 7 x 7 ft | 2,220 lb | \$9,900.00 |
| 39155 | 8 x 8 ft | 2,310 lb | \$9,900.00 |
| 39156 | 9 x 9 ft | 2,545 lb | \$9,900.00 |
| 39157 | 10 x 10 ft | 2,635 lb | \$9,900.00 |
| 50,000 lb | | | |
| 39158 | 5 x 5 ft | 2,010 lb | \$9,900.00 |
| 39159 | 6 x 6 ft | 2,120 lb | \$9,900.00 |
| 39160 | 7 x 7 ft | 2,385 lb | \$9,900.00 |
| 39161 | 8 x 8 ft | 2,495 lb | \$9,900.00 |
| 39162 | 9 x 9 ft | 2,750 lb | \$9,900.00 |
| 39163 | 10 x 10 ft | 2,860 lb | \$9,900.00 |

Pipe Lever Scale Questionnaire



Company _____

Name _____ Date _____

Phone _____ Fax _____ Email _____

| | 5K/10K Total Load* | | 25K Total Load* | | 30K Total Load* | | 40K/60K Total Load* | |
|---|--------------------|----------|-----------------|----------|-----------------|----------|---------------------|----------|
| | Standard | Minimum | Standard | Minimum | Standard | Minimum | Standard | Minimum |
| A | — | 48.00 in | — | 48.00 in | — | 60.00 in | — | 60.00 in |
| B | — | 48.00 in | — | 48.00 in | — | 60.00 in | — | 60.00 in |
| C | 12.25 in | 4.50 in | 15.50 in | 7.00 in | 15.62 in | 7.00 in | 18.00 in | 7.00 in |
| D | 6.00 in | 6.00 in | 9.50 in | 8.75 in | 9.50 in | 8.75 in | 13.00 in | 12.00 in |
| E | 6.00 in | 6.00 in | 9.50 in | 8.75 in | 9.50 in | 8.75 in | 13.00 in | 12.00 in |
| F | 8.62 in | 8.62 in | 13.56 in | 13.56 in | 13.81 in | 13.81 in | 18.18 in | 18.18 in |
| G | 4.50 in | 3.50 in | 6.50 in | 4.75 in | 6.50 in | 4.75 in | 9.25 in | 6.50 in |
| H | 4.50 in | 3.50 in | 6.50 in | 4.75 in | 6.50 in | 4.75 in | 9.25 in | 6.50 in |
| J | 24.00 in | 24.00 in | 32.25 in | 32.25 in | 32.25 in | 32.25 in | 37.25 in | 37.25 in |

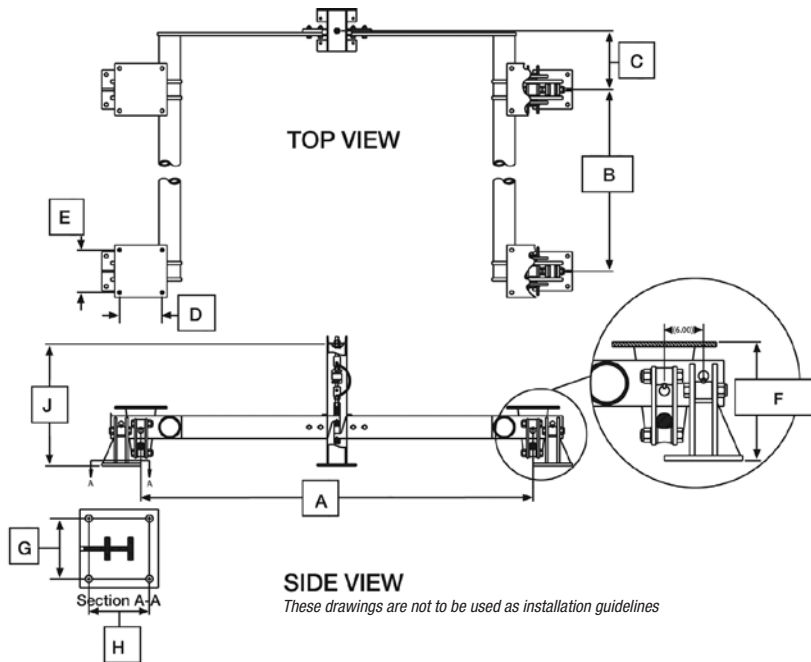
A x B must be equal to or less than 64 square feet. If, over consult factory.

* Live and dead load

A x B must be equal to or less than 100 square feet. If, over consult factory.

A x B must be equal to or less than 100 square feet. If, over consult factory.

A x B must be equal to or less than 100 square feet. If, over consult factory.



| | |
|-----|--|
| A | |
| B | |
| C | |
| D+ | |
| E+ | |
| F | |
| G** | |
| H** | |
| J | |

** Stand hole dimensions +Chair hole dimensions.

Capacity: 5K 10K 25K 30K 40K 50K 60K

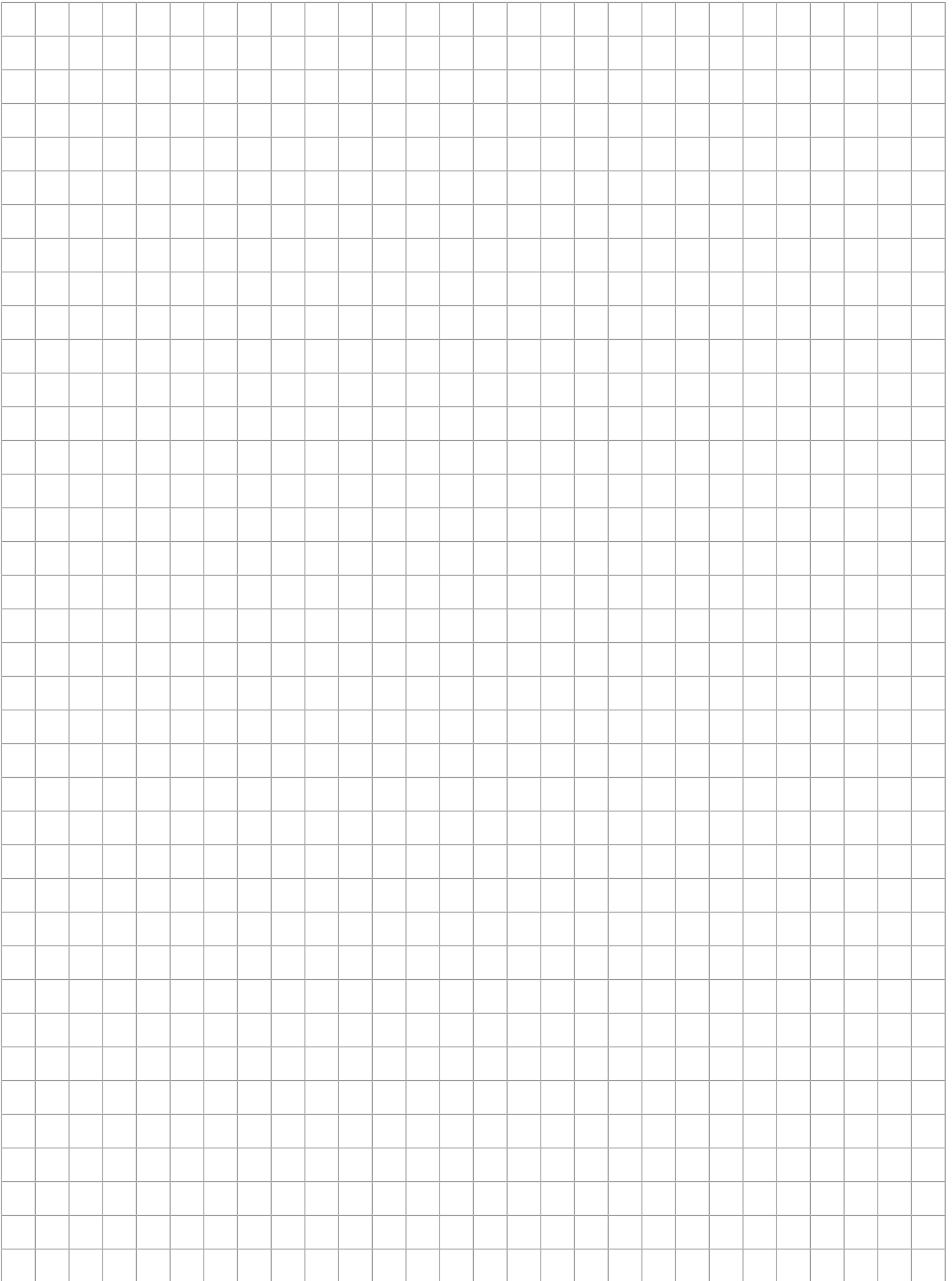
Material: Stainless Steel Mild Steel

NTEP Required: Yes No

Finish: _____

Load Cell: Mild Steel Model _____ Stainless Steel Hermetically Sealed Model _____

Form #0652 New 08/2021

A large grid of empty cells, likely for data entry or calculation. The grid consists of 20 columns and 30 rows of small squares.