



NATIONAL TYPE EVALUATION PROGRAM

Certificate of Conformance

for Weighing and Measuring Devices

For:

Indicating Element
In-Motion or Static, Software
Model: VIRTUi, VIRTUi2, & VIRTUi3
 n_{max} : 10 000
Accuracy Class: III / III L

Submitted By:

Rice Lake Weighing Systems
230 West Coleman Street
Rice Lake, WI 54868
Tel: 715-234-9171
Contact: Derrick Bender
Email: dbender@ricelake.com
Web site: www.ricelake.com

Standard Features and Options

Standard Features:	Version 1	Version 2	Version 2.01	Version 3
Center of Zero	X	X	X	X
Gross/Net Weight Display	X	X	X	X
Semi-automatic (push-button) Zero	X	X	X	X
Semi-automatic (push-button) Tare	X	X		X
lb/kg Units	X	X	X	X
Print Capacity	X	X		X
Single Display	X	X	X	X
Up to 5 Displays		X		
Summing Display		X		
In-Motion Weighing				X
Small Screens				X

Minimum System Requirements:

- Product Version: VIRTUi 1.0.5.27750 or Higher, VIRTUi2 2.0.0 or higher, VIRTUi3 3.1.0.0 or higher
- Operating System: Windows 98 or newer / Android 4.4 (KitKat) or higher
- Internet Explorer 5.5 or newer (Windows only)
- .NET Framework 1.1 (Windows only)
- 64 MB Ram
- 30 MB Free Hard Drive Space
- Hardware: Desktop or Laptop PC, Wireless Handheld devices, all mobile devices supporting the Android 4.4 O.S. and higher
- Program language: C# / Java
- Serial Port, USB or Bluetooth connectivity capability.
- Note: This system performs accounting and record keeping functions that have no metrological effect on the weighing operation.
- Compatible with the Rice Lake Model iQube and iQube2 NTEP Certificate of Conformance 03-032

This device was evaluated under the National Type Evaluation Program and was found to comply with the applicable technical requirements of "NIST Handbook 44: Specifications, Tolerances and Other Technical Requirements for Weighing and Measuring Devices." Evaluation results and device characteristics necessary for inspection and use in commerce are on the following pages.

Kevin Schnepf
Chair, NCWM, Inc.

Marc Paquette
Chair, NTEP Committee
Issued: May 20, 2026

9011 South 83rd Street | Lincoln, Nebraska 68516

The National Council on Weights and Measures (NCWM) does not approve, recommend or endorse any proprietary product or material, either as a single item or as a class or group. Results shall not be used in advertising or sales promotion to indicate explicit or implicit endorsement of the product or material by the NCWM.



Rice Lake Weighing Systems

Indicating Element / VIRTUi, VIRTUi2, & VIRTUi3

Application: A software based virtual indicator designed to replicate the form and function of the IQ plus 355. The virtual front panel consists of a display and five-button keypad. Keys are activated by a mouse click or a touch screen. PC and mobile devices consist of a display and function keys. VIRTUi, VIRTUi2, & VIRTUi3 have to be interfaced to a NTEP Certified and Compatible Digital Controller Element or Digital Controller for Load Cells.

Identification: The required information is displayed on the VIRTUi Screen under the "HELP" menu. The Capacity by Division Statement is located on the screen under the weight indication. On the handheld device, by pressing the button labeled "NTEP CC" a dropdown box will appear displaying required marking information. On mobile computers the identification can be found on the main screen.

Sealing: The VIRTUi, VIRTUi2, & VIRTUi3 have no sealable parameters. When the VIRTUi, VIRTUi2, & VIRTUi3 are interfaced with the iQube-yx and iQube2-zx NTEP CC 03-032 the sealing method is thru the iQube-yx and iQube2-zx sealing method.

Test Conditions: This Certificate of Conformance supersedes Certificate of Conformance 04-058A8 and is issued to add the iQube and iQube2 NTEP CC 03-032 as a recognized Digital controller for load cells to this NTEP Certificate of Conformance. Per NTEP technical policy no testing was deemed necessary. Previous test conditions are below for reference.

Certificate of Conformance Number 04-058A8: This Certificate of Conformance supersedes Certificate of Conformance 04-058A7 and is issued to add VIRTUi 2.01 which is an interface change to version 2. The emphasis of the evaluation was on interface design and performance. An android device with VIRTUi 2.01 installed on it was tested using a load cell simulator. Several increasing and decreasing load tests were performed to verify the device read input properly. This software is designed specifically for use with Rice Lake forklift scales. The previous test conditions are listed below for reference.

Certificate of Conformance Number 04-058A7: This Certificate of Conformance supersedes Certificate of Conformance 04-058A6 and is issued to add Static option to VIRTUi3. The emphasis of the evaluation was on device design and performance requirements. A VIRTUi3 with large & small screen was submitted. Several performance tests were conducted to verify the device functioned correctly in static mode. No other tests were deemed necessary. The previous test conditions are listed below for reference.

Certificate of Conformance Number 04-058A6: This Certificate of Conformance supersedes Certificate of Conformance 04-058A5 and is issued to add an Android operating system for in-motion weighing. The emphasis of the evaluation was on device design, performance and marking requirements. Several performance tests were conducted to verify all the display functioning correctly. No other tests were deemed necessary. The previous test conditions are listed below for reference.

Certificate of Conformance Number 04-058A5: This Certificate of Conformance supersedes Certificate of Conformance 04-058A4 and is issued to add the VIRTUi3 software (see examples below). The VIRTUi3 version was designed to operate as the primary indicating element when interfaced with in-motion instruments. The emphasis of the evaluation was on device design and performance and was interfaced, wirelessly to the model CLS Lift Truck Scale (NTEP CC 06-074).

Certificate of Conformance Number 04-058A4: This Certificate of Conformance supersedes Certificate of Conformance 04-058A3 and is issued to add the latest model Handheld Wireless Device with VIRTUi2 software (see page 4). The emphasis of the evaluation was on device design, performance and marking requirements. The requirements in NTEP Publication 14, section on testing wireless devices were used. No other tests were deemed necessary.

Certificate of Conformance Number 04-058A3: This Certificate of Conformance supersedes Certificate of Conformance 04-058A2 and is issued to add a different display screen and include compatibility with a mobile computer. No metrological changes were made; therefore, no testing was deemed necessary.

Certificate of Conformance Number 04-058A2: This Certificate of Conformance supersedes Certificate of Conformance 04-058A1 and is issued to add the model Handheld Wireless Device with VIRTUi2 software. The emphasis of the evaluation was on device design, performance and marking requirements. The requirements in NTEP Publication 14, section on testing wireless devices were used. No other tests were deemed necessary.



Rice Lake Weighing Systems

Indicating Element / VIRTUi, VIRTUi2, & VIRTUi3

Certificate of Conformance Number 04-058A1: This Certificate of Conformance supersedes Certificate of Conformance 04-058 and is issued to add the model Vertui2, which has 4 main displays and a 5th display for summing. The emphasis of the evaluation was on device design, performance and marking requirements. Several performance tests were conducted to verify all the displays functioned correctly. No other tests were deemed necessary.

Certificate of Conformance Number 04-058: The emphasis of the evaluation was on the performance of the computer system, its interaction with the weighing system, marking requirements and the information printed on the weight ticket. The software was installed on an IBM compatible computer. A Rice Lake indicator, Model IQube (Certificate of Conformance Number 03-032) was used with a load cell simulator for the evaluation. The requirements for an indicating element along with other applicable requirements from NTEP Publication 14 were used as a guideline. Several increasing return to zero load tests were completed.

Evaluated By: A. McCoy (OH) 04-058; T. Lucas (OH) 04-058A1; M. Kelley (OH) 04-058A2; J. Morrison (OH) 04-058A1, 04-058A3, 04-058A4; D. Flocken (NTEP) 04-058A5, M. Kelley (OH) 04-058A6, 04-058A7; B. Sipe (OH) 04-058A8 (CN 10804); J. Gibson (NCWM) 04-058A9 (CN xxxxx)

Type Evaluation Criteria Used: *NIST Handbook 44 Specifications, Tolerances, and Other Technical Requirements for Weighing and Measuring Devices, 2023 Edition. NCWM Publication 14 Weighing Devices, 2023 Edition.*

Conclusion: The results of the evaluation and information provided by the manufacturer indicate the device complies with applicable requirements.

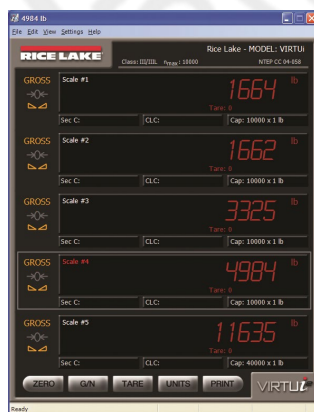
Information Reviewed By: J. Truex (NCWM) 04-058A1, 04-058A2, 04-058A3, 04-058A4, 04-058A5, 04-058A6; D. Flocken (NCWM) 04-058A7, 04-058A8; J. Gibson (NCWM) 04-058A9

Examples of Device:

Model VIRTUi

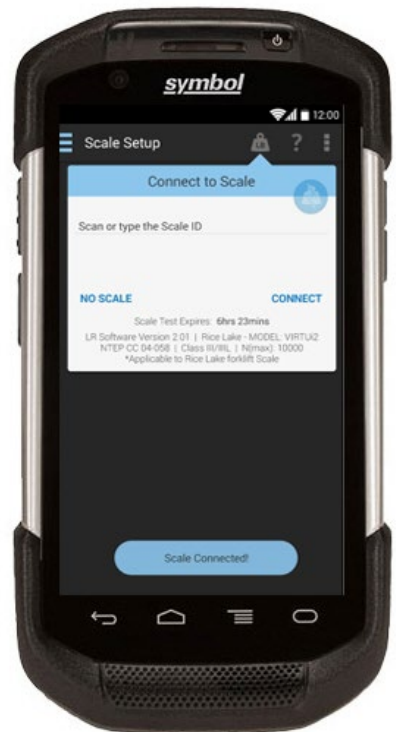
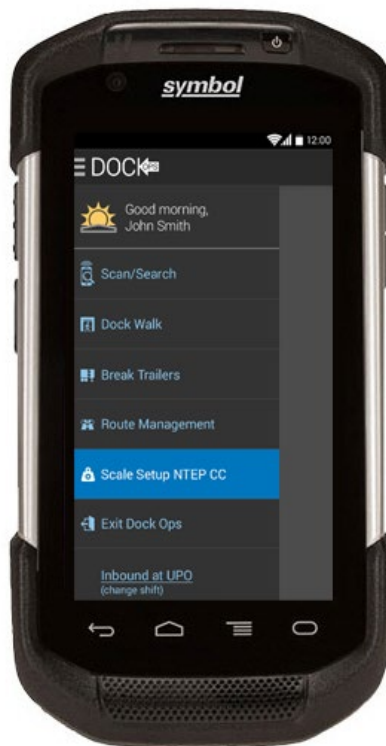
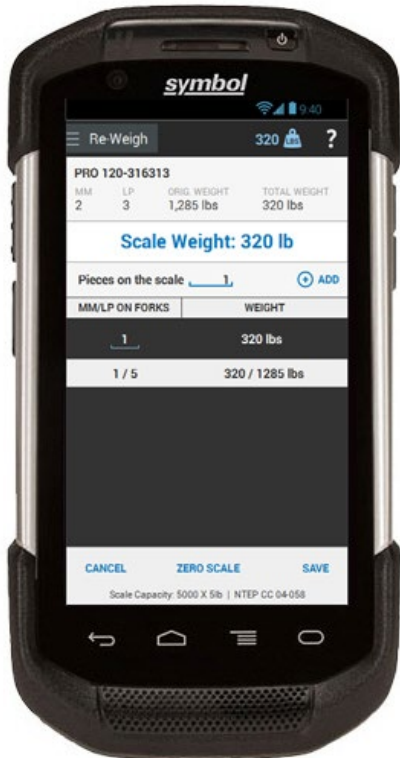


Model VIRTUi2





Rice Lake Weighing Systems
Indicating Element / VIRTUi, VIRTUi2, & VIRTUi3





Rice Lake Weighing Systems Indicating Element / VIRTUi, VIRTUi2, & VIRTUi3

Model VIRTUi 2.01

11:25 AM

Back Home

Shipment Info

Shipment: Barcode: 1804882338
1804882338-00

From: DOHRN TRANSFER RIS

To: DOHRN TRANSFER RKF
ROCK FALLS, IL 61071

Destination: RKF
Origin: RIS
Pieces: 1 Pallets: 0 Pallet Spots: 0
Weight: 930
Current Location: !! UNKNOWN !!
Valid Areas: RKF/DK11

New Location: scan new location Scan

W & I OS&D Photo More...

User: Gustafsa (Supervisor) Terminal: RIS

11:24 AM

Home

Dock Scanning Dock Photo Dock Assignments

Staff Photo Forklift Scale Inspection Mode Dock Chat

Company Messages Logout

User: Gustafsa (Supervisor) Terminal: RIS

11:26 AM

Back Home

Inspection Mode

Please scan the forklift scales equipment barcode.

.BS60A4238C1A9C Scan

Scale Information

Live Weight: 1000 lb Zero ->0<-

Capacity: 5000 lb x 5 lb

Serial No: 160785

NTEP CC: 04-058
Rice Lake - Model: Virtui2
LR Software Version: 2.01
Scale Class: III/IIIL
N(max): 10000

*Applicable to Rice Lake forklift scales

Close

User: Gustafsa (Supervisor) Terminal: RIS

Model VIRTUi3

In-motion weighing

RICE LAKE VIRTUi3 Calibration | Configuration | Diagnostic | Options

FINAL WEIGHT

1000 lb

GROSS 5000 lb x 5 lb

ZERO →0← IMCLR

Pitch 0.0 Roll -0.1

NTEP CC: 04-058 | Unit ID: 123456 | Mode: In-motion | Version 3.4.0.0

Static weighing

RICE LAKE VIRTUi3 Calibration | Configuration | Diagnostic | Options

LIVE WEIGHT

0 lb

GROSS →0← 5000 lb x 5 lb

ZERO →0← PRINT

Pitch 0.0 Roll -0.1

NTEP CC: 04-058 | Unit ID: 123456 | Mode: Static | Version 3.4.0.0

RICE LAKE VIRTUi3 NTEP CC: 04-058 | MODE: IN-MOTION

FINAL WEIGHT 1000 lb IMCLR

GROSS 5000 x 5 lb

RICE LAKE VIRTUi3 NTEP CC: 04-058 | MODE: STATIC

LIVE WEIGHT 0 lb PRINT

GROSS →0← 5000 x 5 lb



Rice Lake Weighing Systems
Indicating Element / VIRTUⁱ, VIRTUⁱ2, & VIRTUⁱ3

Operating system: Android 4.4 (KitKat) display

