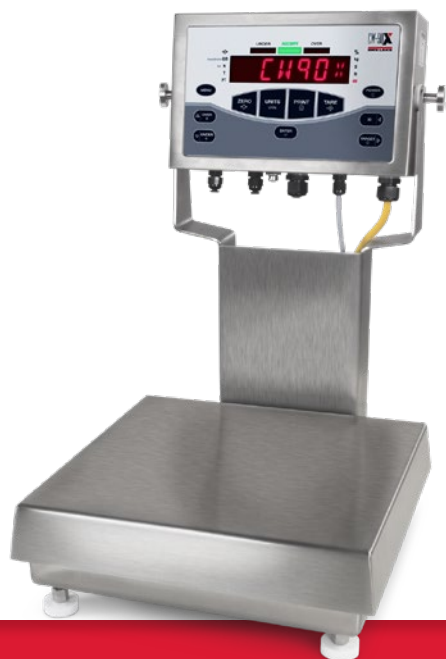


# CW-90X

OVER/UNDER WASHDOWN  
CHECKWEIGHER



**RICE LAKE®**  
WEIGHING SYSTEMS

800-472-6703

[www.ricelake.com](http://www.ricelake.com)

# Performance Under Extreme Pressure

## Reliable Strength

The CW-90X is designed to provide reliable performance in the demanding environments of the food industry. Built to withstand high-temperature and high-pressure washdown procedures, the CW-90X meets HACCP requirements and has an IP69K, hermetically sealed, stainless steel load cell. The CW-90X is constructed of 304 stainless steel and has a five-point overload protection system to prevent load cell damage during weighing processes.

## Simple Operation

The CW-90X can store up to 50 individual IDs to recall previously stored information, simplifying checkweighing. It can also transmit production data via option Ethernet, USB or fiber optic connections. Program the CW-90X to accept product at predetermined set values and then use the checkweigher by relying solely on the bright over/under lights. A red light displays an underweight condition, yellow is over, and a green light indicates the product is within the specified target values.

## Stainless Steel Design

The stainless steel, IP69K-rated indicator can be mounted on a wall or shelf above the scale base, or it can be connected to the base with a stainless steel column. Tilt knobs on the indicator are stainless steel to help ensure hygienic conditions, while allowing operators to angle the display.

The base on the CW-90X is also constructed of stainless steel with an IP69K rating to withstand sanitation procedures. Rice Lake can also create custom-size scale bases and columns to meet your unique weighing needs.



NSF®



### MOISTURE CONTROL

Eliminate the possibility of damaging moisture and dust while allowing air to flow freely in and out of the indicator with the stainless steel Gore® PreVent® breather vent.

GORE, GORE-TEX and design are registered trademarks of W.L. Gore & Associates, Inc.



### EASY TO READ

The high-intensity LED display features adjustable contrast so it can be adapted to any lighting condition. Over, under and accepted weight range lights and unit of measure annunciators are also clearly visible.



### HEAVY-DUTY KEYPAD

The CW-90X features a tough piezo keypad made to withstand sharp knife-point contacts as well as contaminants and liquids. The hardened, extra-strength material is designed to ensure your scale will continue to work through every process.



### POWER CABLE

The power cable color for models with 115 VAC is now a vibrant yellow so operators and cleaning crews can more easily see food or material buildup to ensure hygienic conditions.



### NSF APPROVAL

The CW-90X is fully compliant with NSF International standards and certified\* for use in meat and poultry processing. These standards have been specified by the USDA to ensure the highest quality equipment is used in food manufacturing.

\*NSF/ANSI/3-A Standards 14159-1, -2 and -3.

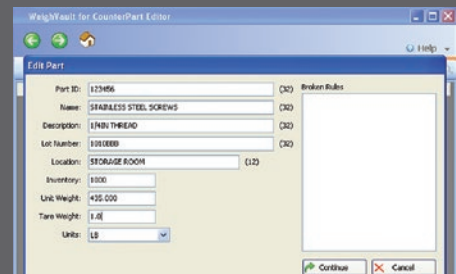


## Simple Data Management for Growing Companies

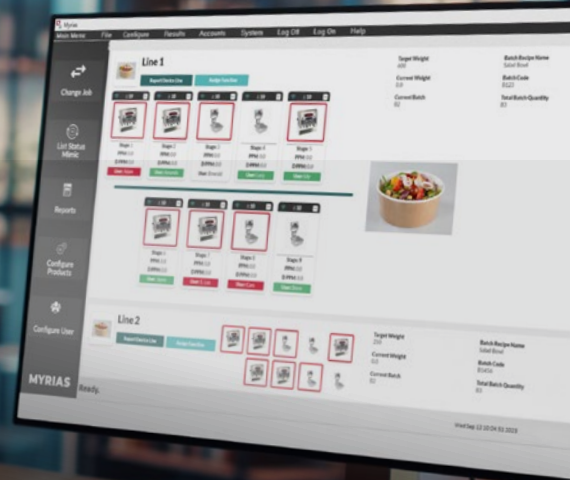
# WeighVault

### WeighVault®

WeighVault® software for the CW-90X checkweigher simplifies data entry, storage and reporting for single or multiple checkweighers. Easily access reports to review data including number of weighments, average weight, target values, transaction dates and more.



**MYRIAS™**  
INTEGRATED SOFTWARE SOLUTION



### Myrias™ Integrated Software Solution

Myrias™ is an easy-to-use data management software with options for static checkweighing, batch recipe formulation, offline sampling and more—all with easy-to-read reports. Myrias can help prevent batching errors, increase production efficiency and provide lot tracing to simplify business processes.



## OVER/UNDER WASHDOWN CHECKWEIGHER

### STANDARD FEATURES

#### Indicator:

- Piezo keypad consisting of ZERO, UNITS, PRINT, TARE, OVER, UNDER, ID, TARGET, ENTER, MENU, POWER
- 304 stainless steel, IP69K rated
- SST Gore® PreVent® breather vent
- Storage for up to 50 IDs
- Unit of Measure: kg, gm, lb, oz, lb/oz

#### Platform:

- IP69K, stainless steel hermetically sealed load cell
- 304 stainless steel
- Five-point overload protection
- Optional Communications: Ethernet, USB or Fiber Optic
- Four configurable digital I/Os
- Auto Print Capability

115 VAC OR 230 VAC				Platform Dimensions	Column Height
lb	Capacity lb	Capacity oz	Capacity kg	Inches	Inches
5	5 × 0.001	80 × 0.02	2.5 × 0.0005	10 × 10	12
10	10 × 0.002	160 × 0.05	5 × 0.001	10 × 10	12
25	25 × 0.005	400 × 0.1	10 × 0.005	10 × 10	12
25	25 × 0.005	400 × 0.1	10 × 0.005	12 × 12	12
50	50 × 0.01	800 × 0.2	25 × 0.005	12 × 12	12
100	100 × 0.02	1600 × 0.5	50 × 0.01	12 × 12	12

230 VAC CE marked/OIML approved		Platform Dimensions	Column Height
kg	Capacity kg	mm	mm
3	3 × 0.001	254 × 254 × 108	305
6	6 × 0.002	254 × 254 × 108	305
15	15 × 0.005	254 × 254 × 108	305
15	15 × 0.005	305 × 305 × 108	305
30	30 × 0.01	305 × 305 × 108	305
60	60 × 0.02	305 × 305 × 108	305

Column is 12 in/305 mm high.  
Custom column and platform sizes available.

### SPECIFICATIONS

<b>POWER AC:</b>	Line voltages: 115/230 VAC Frequency: 50/60 Hz Fused at 2.5 A
<b>POWER CONSUMPTION:</b>	1.5 A at 115 VAC (8W), 0.75 A at 230 VAC (8W)
<b>EXCITATION VOLTAGE:</b>	+5VDC 8 × 350 ohm or 16 × 700 ohm load cells
<b>ANALOG SIGNAL INPUT RANGE:</b>	-0.5 mV/V + 4.5 mV/V
<b>ANALOG SIGNAL SENSITIVITY:</b>	0.3 µV/graduation minimum, 1.5 µV/graduation recommended
<b>MEASUREMENT RATE:</b>	960, 480, 240, 120, 60, 30, 15, 7.5 per second
<b>SYSTEM LINEARITY:</b>	+/-0.01% full scale
<b>DIGITAL I/O:</b>	4 channels on CPU board
<b>CIRCUIT PROTECTION:</b>	RFI, EMI, EFT, ESD and surge protection
<b>DISPLAY:</b>	Large 0.8 in, 14-segment, six-digit high-intensity red LED display with three color over/under bar graph
<b>STATUS ANNUNCIATORS:</b>	Designators for %, kg, gm, lb, oz, center of zero, Gross/Brutto, N, T, PT, neg, motion
<b>OPERATING TEMPERATURE:</b>	Legal: 14° F to 104° F -10° C to 40° C
<b>RATING MATERIAL:</b>	IP69K, 304 stainless steel
<b>DISPLAY RESOLUTION:</b>	100,000 graduations maximum
<b>LOAD CELL:</b>	IP69K, stainless steel hermetically sealed
<b>WARRANTY:</b>	Three-year limited

### APPROVALS



Measurement  
Canada  
Approved



\* lb/oz setting is non-legal for Trade

R76/2006-G81-10.02  
European Test Certificate G81385  
European EC Type-Approval 15692  
Accuracy Class III max: 10,000



SALES AND TECHNICAL ASSISTANCE

**RICE LAKE®**  
WEIGHING SYSTEMS

#### HEADQUARTERS

230 West Coleman Street  
Rice Lake, Wisconsin 54868 - USA  
Tel: (715) 234 9171 | Fax: (715) 234 6967  
www.ricelake.com