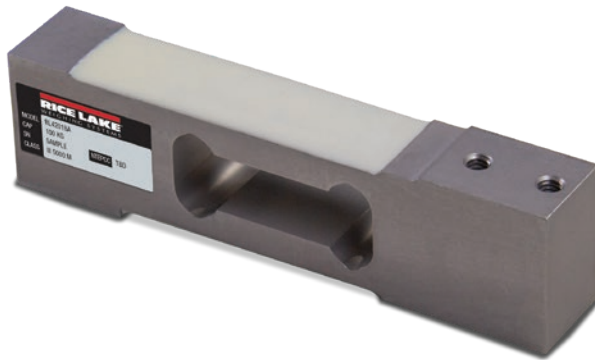


SINGLE POINT
RL42018A

Aluminum, Environmentally Sealed, NTEP Certified 1:5,000 Class III Single Cell, IP66



Picture is a representation of actual product.

Approvals

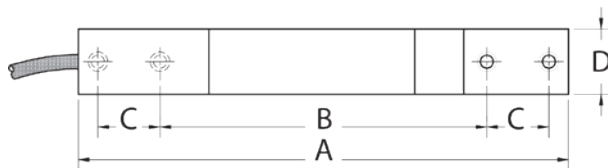
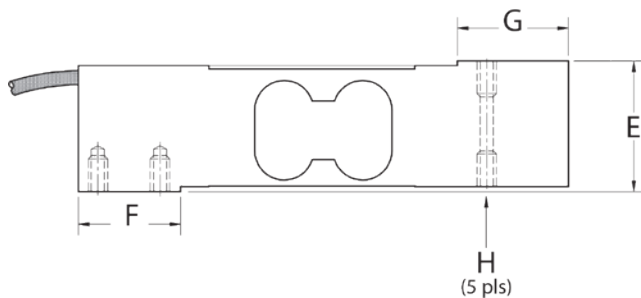


Order Information

Load Rating	Part #	Est. Weight	Price
3 kg	188672	2 lb	Consult
5 kg	188673	2 lb	Consult
7 kg	188674	2 lb	Consult
10 kg	188675	2 lb	Consult
15 kg	188676	2 lb	Consult
20 kg	188677	2 lb	Consult
30 kg	188678	2 lb	Consult
50 kg	188679	2 lb	Consult
75 kg	188680	2 lb	Consult
100 kg	188681	2 lb	Consult

Dimensions

Rated Capacity	A	B	C	D	E	F	G	H
kg/mm								
3 to 30	150.0	100.0	19.0	20.0	40.0	31.2	34.0	1/4-20 UNC
50 to 100	150.0	100.0	19.0	25.4	40.0	31.2	34.0	1/4-20 UNC



Interchangeable Products

- RICE LAKE WEIGHING SYSTEMS
RL1042..... page 173
- RICE LAKE WEIGHING SYSTEMS
RLSP4..... page 170
- VPG® TEDEA-HUNTLEIGH®
1042..... page 328
- HBK®
SP4M*..... page 242

*Color code is different

Specifications

- Full Scale Output:**
2.0 mV/V ± 10%
- Output Resistance:**
350 (± 3) ohm
- Input Resistance:**
400 (± 20) ohm
- Material/Finish:**
Aluminum
- Temperature:**
Compensated range
14 °F to 104 °F/-10 °C to 40 °C
Operating range
0 °F to 150 °F/-18 °C to 65 °C
- Seal Type:**
Environmentally sealed, IP66
- Safe Overload:**
150% of full scale at center loading point
- Rated Excitation:**
10 VDC
- Combined Error:**
0.02% full scale
- Insulation Resistance:**
> 5,000 megohm
- Deflection:**
0.3 to 0.5 mm
- Cable Length:**
10 ft
- Cable Color Code:**
Green +Excitation
Black -Excitation
Red +Signal
White -Signal
Blue +Sense
Yellow -Sense
- Platform Size:**
15.75 × 15.75 in max
- Warranty:**
Two-year limited
- Approvals:**
cFMus
NTEP 18-105

RICE LAKE
LOAD CELLS