

RL2200 Series

Mild Steel, Weigh Module Kit



Picture is a representation of actual product.

Order Information

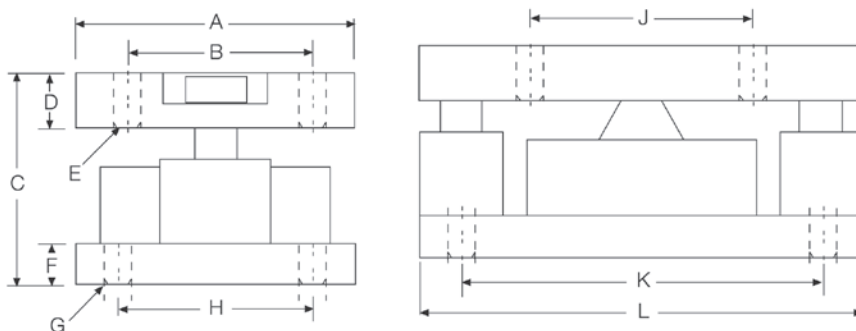
Load Rating (Per Module)	Part #	Price
Single Module		
2,500 lb	76656	Consult
5,000 lb	45849	Consult
10,000 lb	45848	Consult
25,000 lb	45847	Consult
50,000 lb	45846	Consult
3-Module Kit		
2,500 lb	76897	Consult
5,000 lb	42811	Consult
10,000 lb	42812	Consult
25,000 lb	42813	Consult
50,000 lb	42814	Consult
4-Module Kit		
2,500 lb	76898	Consult
5,000 lb	42815	Consult
10,000 lb	42816	Consult
25,000 lb	42817	Consult
50,000 lb	42818	Consult

Replacement Load Cell Order Information

Load Rating (Per Module)	Part #	Price
2,500 lb	76654	Consult
5,000 lb	45708	Consult
10,000 lb	45709	Consult
25,000 lb	45710	Consult
50,000 lb	45711	Consult

Dimensions

Rated Capacity	A	B	C	D	E	F	G	H	J	K	L
lb/in											
2,500 to 10,000	5.00	3.50	4.00	1.00	0.52	1.00	0.52	3.50	4.00	6.50	8.00
25,000 to 50,000	6.00	4.50	5.00	1.25	0.78	1.00	0.78	4.50	5.00	7.75	10.00



Complete Kit Includes

- Three or four RL2200 high-alloy, zinc-plated steel mounting assemblies with RL2200 compression disk load cells
- One JB4SS NEMA Type 4X stainless steel signal trim junction box
- 25 ft of hostile environment EL147HE SURVIVOR® load cell cable

Standard Features

- Capacities (per module): 2,500 to 50,000 lb
- Low-profile design
- Self-centering in all directions, able to withstand excessive side loads
- Self-checking assembly

Applications

- Tank, hopper or vessel weighing
- Belt or roller conveyors
- Scale platforms and screw feeders

Specifications

Full Scale Output:

4.0 mV/V
2.0 mV/V (2,500 lb)

Bridge Resistance:

350 ohm nominal

Material/Finish:

High-alloy steel, painted

Temperature:

Compensated:
15 °F to 115 °F (-9 °C to 46 °C)

Seal Type:

Environmentally sealed

Safe Overload:

150% full scale

Rated Excitation:

5 to 10 VDC (20 V maximum)

Nonlinearity:

0.05% full scale

Hysteresis:

0.03% full scale

Insulation Resistance:

5,000 megohm

Cable Length:

30 ft

Cable Color Code:

Red +Excitation
Black -Excitation
White +Signal
Green -Signal

Warranty:

Two-year limited

WEIGH MODULES