

# MSI-8000HD and MSI-8004HD

## Expanded Relay Option Kit

This addendum provides an overview of the parts included in the expanded relay option kit.

The MSI-8000HD and MSI-8004HD expanded relay option kit contains 4 or 8 relays and is installed on the back of the enclosure.



Manuals and additional resources are available from the Rice Lake Weighing Systems website at [www.ricelake.com](http://www.ricelake.com)

Warranty information can be found on the website at [www.ricelake.com/warranties](http://www.ricelake.com/warranties)



**WARNING** Failure to heed the following warnings could result in serious injury or death.

- \* Ensure that all power has been removed prior to working inside the enclosure.
- \* Use anti-static protection for grounding and to protect components from electrostatic discharge (ESD) when working inside the enclosure.
- \* Procedures requiring work inside the enclosure must be performed by qualified service personnel only.

Each of the 8 relay numbers in [Figure 1](#) correspond to the set point of the same number. Ensure proper connections are made with each set point.

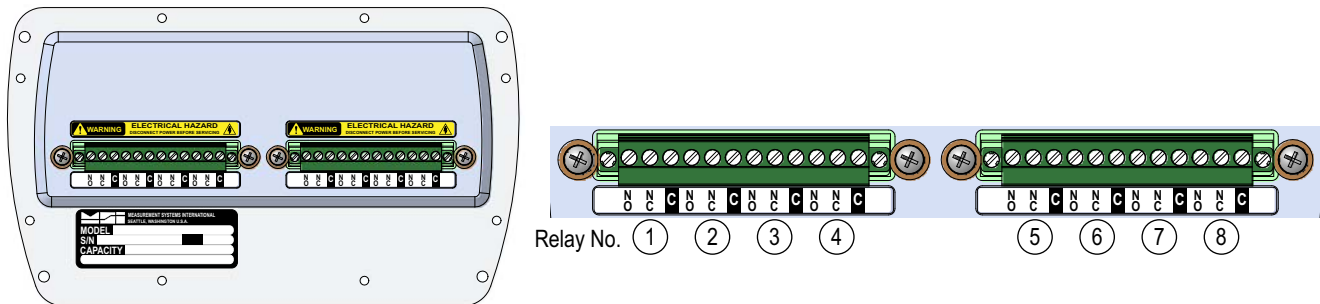


Figure 1. Expanded Relay Option Kit

See below for the full list of expanded relay option kits available for the MSI-8000HD and MSI-8004HD:

Part No.	Description
172502	8-CH 0.9 A 200 VPK SSR FORM C
172501	8-CH 3 A 60 VPK SSR FORM C
172500	4-CH 3 A 60 VPK SSR FORM C
172498	8-CH 0.9 A 200 VPK SSR
172497	8-CH 3 A 60 VPK SSR
172495	8-CH 12 A 5 V RELAYS MOMENTARY
172494	4-CH 0.9 A 200 VPK AC/DC SSR
172493	4-CH 3 A 60 VPK AC/DC SSR
172492	4-CH 5 V MOMENTARY
172490	4-CH 5 V LATCHING RELAYS
171676	8-CH 12 A RELAYS LATCHING

Table 1. Expanded Relay Option Kits

See below for the full parts list for an 8-channel MSI-8000HD and MSI-8004HD expanded relay option kit:

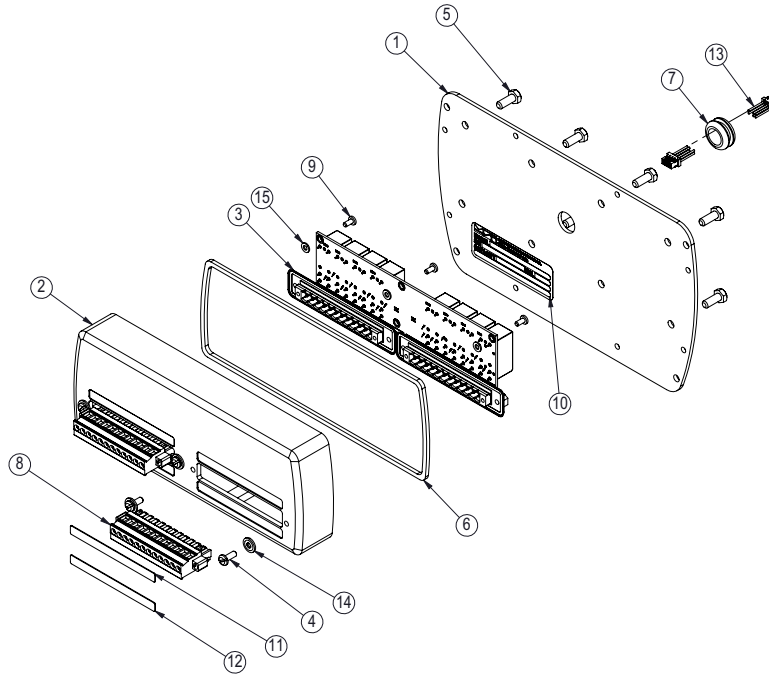


Figure 2. Expanded Relay Kit Parts Illustration

Item No.	Part No.	Description	Qty.
1	171622	Expanded Relay Cover	1
2	171623	Expanded Relay Enclosure	1
3	–	PCA, SPI 4/8-Ch Relay Board	1
4	41630	Screw, Cap M3-0.5 x 10	4
5	146030	Bolt HH 10-32 X 1/2 SS	8
6	171969	O-Ring (AS568-164)	1
7	172134	Grommet, 7/16 ID, 3/4 OD	1
8	172307	Term Blk Plug-in 12Pos RA	2
9	128088	Screw 4-40 x 1/4 PH Phil	3
10	148637	Serial Number Tag, 8000T	1
11	172407	High Voltage Warning Sticker	1
12	172408	Label Relay Designations	2
13	172405	Cable Assembly Expanded Relay	1
14	143272	Washer Seal SS #6	4
15	142474	Washer Flat #4 Nylon 0.031	3
–	159855	Overlay TranSend FCC	1
–	142039	Silicone Oil 1000 CS	–
–	144921	Conn Header 2 mm 8 PIN 2	1

Table 2. Expanded Relay Kit Parts List



© Rice Lake Weighing Systems Specifications subject to change without notice.  
Rice Lake Weighing Systems is an ISO 9001 registered company.

230 W. Coleman St. • Rice Lake, WI 54868 • USA  
U.S. 800-472-6703 • Canada/Mexico 800-321-6703 • International 715-234-9171 • Europe +31 (0)26 472 1319