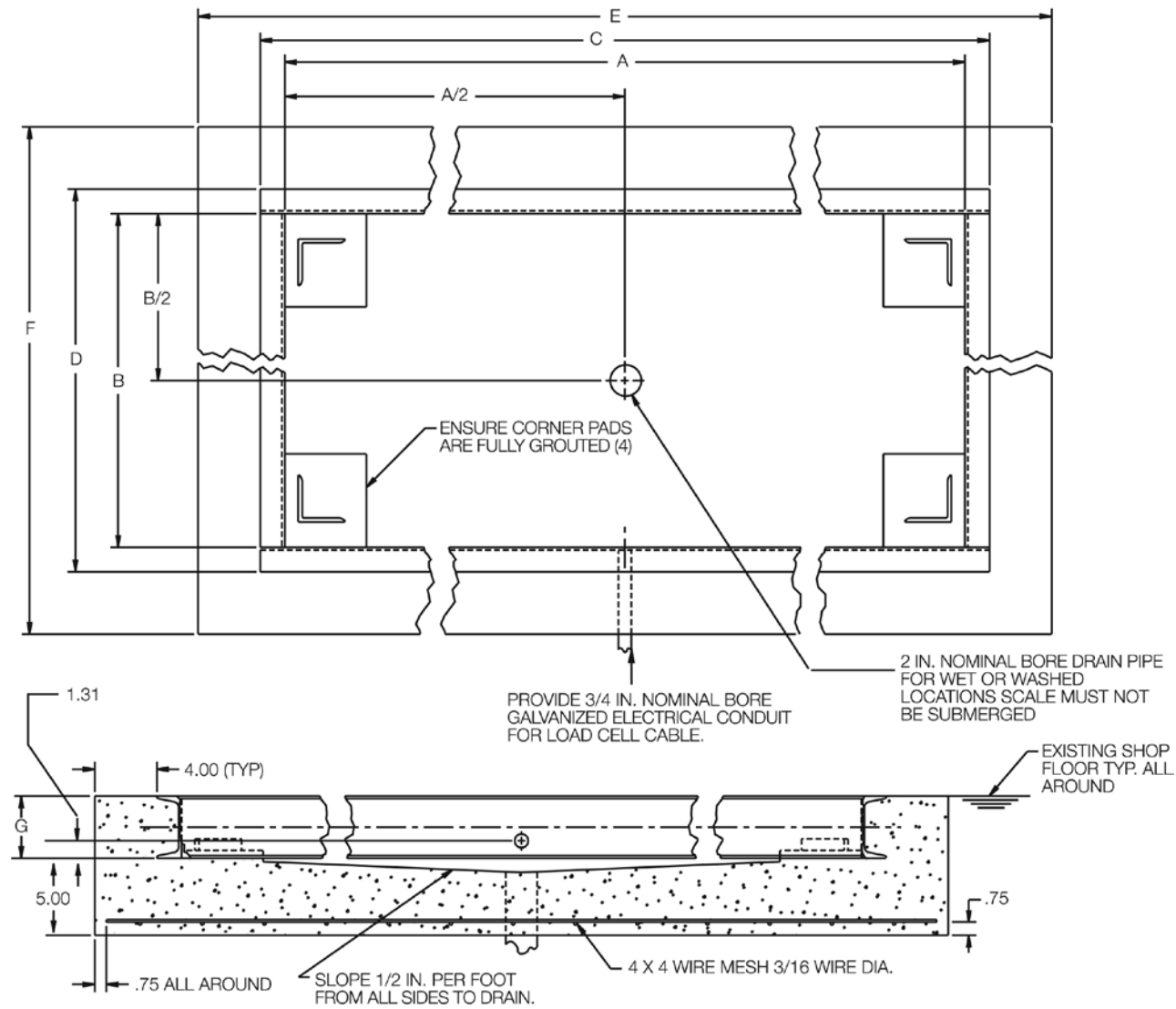


RoughDeck® QC

Pit Frame Concrete Details*

FLOOR SCALES



Dimensions

Scale Size	A	B	C	D	E	F	G
2.5 x 2.5 ft - 2,000 lb	30.75	31.00	34.75	35.00	42.75	43.00	4.00
3 x 3 ft - 2,000 lb	36.75	37.00	40.75	41.00	48.75	49.00	4.00
4 x 4 ft - 2,000 lb	48.75	49.00	52.75	53.00	60.75	61.00	4.00
4 x 4 ft - 5,000 lb	48.75	49.00	52.75	53.00	60.75	61.00	4.00
4 x 4 ft - 10,000 lb	48.75	49.00	53.75	54.00	61.75	62.00	5.00
4 x 5 ft - 2,000 lb	60.75	49.00	64.75	53.00	72.75	61.00	4.00
4 x 5 ft - 5,000 lb	60.75	49.00	65.75	54.00	73.75	62.00	5.00
4 x 5 ft - 10,000 lb	60.75	49.00	65.75	54.00	73.75	62.00	5.00
4 x 6 ft - 2,000 lb	72.75	49.00	77.75	54.00	85.75	62.00	5.00

Scale Size	A	B	C	D	E	F	G
4 x 6 ft - 5,000 lb	72.75	49.00	77.75	54.00	85.75	62.00	5.00
4 x 6 ft - 10,000 lb	72.75	49.00	78.75	55.00	86.75	63.00	6.00
5 x 5 ft - 2,000 lb	60.75	61.00	65.75	66.00	73.75	74.00	5.00
5 x 5 ft - 5,000 lb	60.75	61.00	65.75	66.00	73.75	74.00	5.00
5 x 5 ft - 10,000 lb	60.75	61.00	65.75	66.00	73.75	74.00	5.00
5 x 7 ft - 2,000 lb	84.75	61.00	90.75	67.00	98.75	75.00	6.00
5 x 7 ft - 5,000 lb	84.75	61.00	90.75	67.00	98.75	75.00	6.00
5 x 7 ft - 10,000 lb	84.75	61.00	90.75	67.00	98.75	75.00	6.00
6 x 6 ft - 5,000 lb	72.75	73.00	78.75	79.00	86.75	87.00	6.00
6 x 6 ft - 10,000 lb	72.75	73.00	78.75	79.00	86.75	87.00	6.00

All dimensions are shown in inches. Drawing #S6360A-Rev. D

* Drawings are for standard catalog part numbered scales.

1. Use concrete of minimum yield strength 5,000 PSI or 6-bag mix
2. Allow 7 days to cure (wet concrete periodically during this time)
3. Dimensions shown assume firm, stable soil conditions. When soil conditions are not adequate, place foundation at sufficient depth.
4. In wet or washdown applications, we recommend the use of hermetically sealed load cells, and that the junction box be mounted remotely in a dry location.
5. Wire mesh to have minimum 0.75 in cover bottom and sides.