

Survivor Weigh Modules

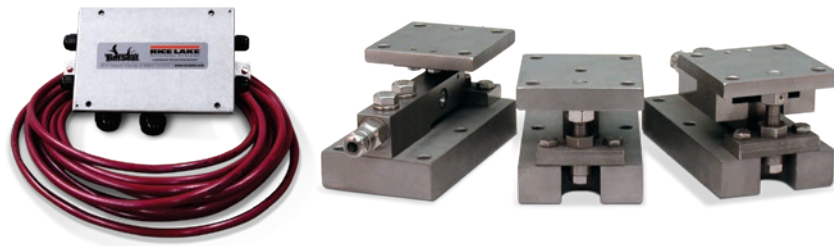
TABLE OF CONTENTS

SURVIVOR® Paramounts® HE	22
<i>Medium-capacity Weigh Module Systems</i>	
RL1700 HE	23
<i>Light- to Medium-capacity Weigh Modules</i>	
RL1600 HE	24
<i>Medium-capacity Weigh Modules</i>	
RL1855 HE-HS	25
<i>Medium-capacity Weigh Modules</i>	
RL2100 HE	26
<i>Heavy-capacity Weigh Modules</i>	

Product names, logos, brands and other trademarks featured or referred to within this publication are the property of their respective trademark holders.

SURVIVOR® Paramounts® HE

Medium-capacity Weigh Module Systems



Picture is a representation of actual product.

SURVIVOR
WEIGH MODULES

Order Information

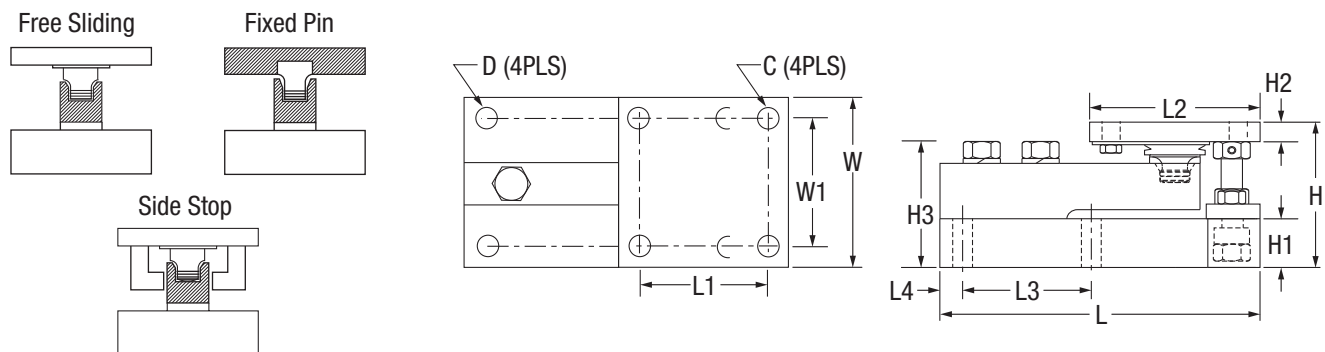
Load Rating (Per Module)	Part #	Price
NTEP Certified/OIML C3 3-Module Kit		
5 kN	29883	\$4,125.00
10 kN	29884	\$4,125.00
23 kN	29885	\$4,125.00
50 kN	29886	\$5,580.00
NTEP Certified/OIML C3 4-Module Kit		
5 kN	29879	\$5,482.00
10 kN	29880	\$5,482.00
23 kN	29881	\$5,482.00
50 kN	29882	\$7,038.00
Non-NTEP Certified 3-Module Kit		
2.3 kN	38207	\$4,680.00
5 kN	17991	\$4,012.00
10 kN	17992	\$4,012.00
23 kN	17993	\$4,012.00
50 kN	17994	\$5,205.00
100 kN	17995	\$5,952.00
Non-NTEP Certified 4-Module Kit		
2.3 kN	38208	\$5,925.00
5 kN	17998	\$5,225.00
10 kN	17999	\$5,225.00
23 kN	18000	\$5,225.00
50 kN	18001	\$6,566.00
100 kN	18002	\$8,284.00
*Conduit adapter, 1/2-14 NPT	17703	\$50.00

*Must be factory installed

Dimensions

Rated Capacity	C	D	H	H1	*H2	**H2	H3	L	L1	L2	L3	L4	W	W1
kN/in														
2.3	0.38	0.44	3.49	1.00	0.50	0.75	2.98	7.51	3.00	4.00	3.00	0.50	4.00	3.00
5 to 23	0.44	0.44	3.58	1.25	0.50	0.75	3.06	7.51	3.00	4.00	3.00	0.50	4.00	3.00
50	0.56	0.56	4.66	1.50	0.62	1.00	4.09	9.19	3.87	5.00	3.87	0.56	5.00	3.87
100	0.69	0.69	6.41	2.00	0.75	1.25	5.73	11.46	4.75	6.00	4.75	0.69	6.00	4.75

*Side stop and free sliding units **Fixed pin units



Complete Kit Includes

- One JB4SS NEMA Type 4X stainless steel signal trim junction box
- One fixed-pin module, one side-stop module, and one or two free-sliding assemblies. Each module is complete with a Flintec SB4 or SB10 (520 lb) stainless steel hermetically sealed load cell.
- 25 ft of our hostile environment EL147HE SURVIVOR load cell cable

Standard Features

- Capacities (per module): (2.3 to 100 kN)
- All stainless steel construction
- Bolt-in-place design; module bolts directly to tank leg without requiring additional load buttons or mounting plates
- Hermetically sealed, stainless steel load cells
- Load cell outputs are mV/V/ohm calibrated to minimizing maintenance costs
- Unique design allows for thermal expansion/contraction
- Low-profile, self-checking design
- Jacking screw allows empty vessel to be lifted clear of load cell for maintenance
- Unique patented blind load hole technology minimizes unwanted side and eccentric loading
- Vessel is free to slide laterally on PTFE-coated surfaces
- Two-year limited warranty

Applications

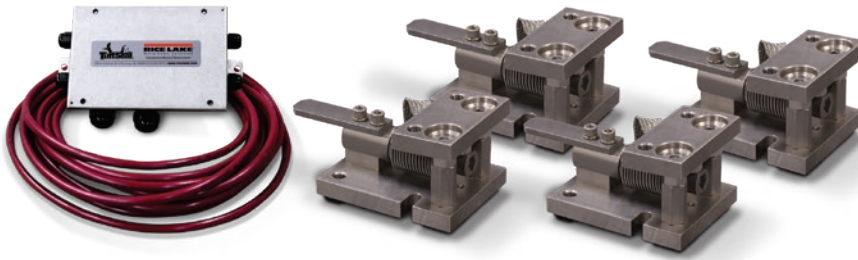
- Medium-capacity blenders and tanks
- Batching/blending
- Pharmaceutical processing
- Food processing
- Petroleum refining and batching

Load Cell Approvals



RL1700 HE

Light- to Medium-capacity Weigh Modules



Picture is a representation of actual product.

Order Information

Load Rating (Per Module)	Part #	Price
Single Module (Includes Load Cell)		
5 kg	32687	\$975.00
10 kg	32688	\$975.00
20 kg	32689	\$975.00
50 kg	32690	\$975.00
100 kg	32691	\$975.00
200 kg	32692	\$975.00
250 kg	32693	\$975.00
500 kg	32974	\$1,187.00
1,000 kg	32973	\$1,187.00
2,000 kg	32972	\$1,187.00
5,000 kg	32971	\$1,463.00
3-Module Kit		
5 kg	32920	\$3,143.00
10 kg	32921	\$3,143.00
20 kg	32922	\$3,143.00
50 kg	32923	\$3,143.00
100 kg	32924	\$3,143.00
200 kg	32925	\$3,143.00
250 kg	32926	\$3,143.00
500 kg	32980	\$3,763.00
1,000 kg	32981	\$3,763.00
2,000 kg	32982	\$3,763.00
5,000 kg	32983	\$4,690.00
4-Module Kit		
5 kg	32927	\$4,150.00
10 kg	32928	\$4,150.00
20 kg	32929	\$4,150.00
50 kg	32930	\$4,150.00
100 kg	32931	\$4,150.00
200 kg	32932	\$4,150.00
250 kg	32933	\$4,150.00
500 kg	32984	\$4,955.00
1,000 kg	32985	\$4,955.00
2,000 kg	32986	\$4,955.00
5,000 kg	32987	\$5,856.00

Dimensions

Rated Capacity	C	B	*H1	**H2	L	L1	L2	L3	L4	L5	W	W1	W2	W3
kg/mm														
5 to 250	12.9	1/2-20 UNF	80.0	86.1	131.8	63.7	76.0	42.0	56.0	14.0	96.0	70.0	12.9	25.4
500 to 2,000	12.9	5/8-18 UNF	101.6	109.4	165.0	70.0	129.5	14.9	80.0	59.9	110.0	70.0	20.0	31.7
5,000	20.0	3/4-10 UNC	135.0	143.0	215.0	81.0	161.0	20.0	90.0	70.5	150.0	90.0	30.0	40.0

* In weighing position ** In jacked-up position for load cell shipping or removal

Complete Kit Includes

- One JB4SS NEMA Type 4X stainless steel signal-trim junction box
- Three or four RL1700 HE stainless steel compression mounts
- Three or four RL9018SS (5 to 250 kg) or RLHTO (500 to 5,000 kg) stainless steel, hermetically sealed single-ended beam load cells
- 25 ft of our hostile environment EL147HE SURVIVOR load cell cable

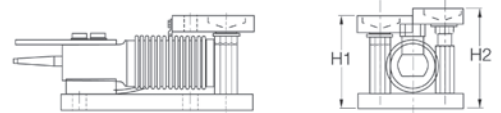
Standard Features

- All stainless steel construction
- Hermetically sealed, stainless steel load cells, IP66/68, guaranteed waterproof
- OIML certified load cells from 5 to 5,000 kg
- Bolt-in-place design; module bolts directly to tank leg without requiring additional load buttons or mounting plates
- Self-checking with lift-off/tip-over protection and jacking/shipping bolts
- Load cell is isolated from overload in all directions
- Weldless construction retains less residue and allows fast, thorough cleaning
- Two-year limited warranty

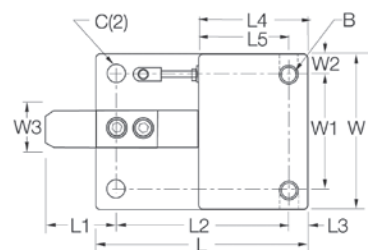
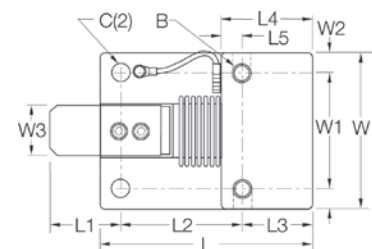
Applications

- Multi-ingredient micro-batching
- Meat and poultry processing
- Batching/blending
- Dye/ink blending

Load Cell Approvals



5 kg - 250 kg capacities

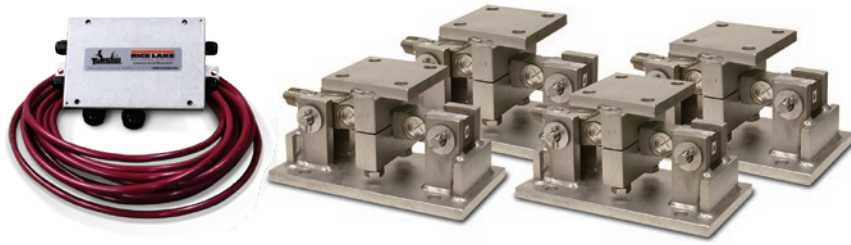


500 kg - 5000 kg capacities

SURVIVOR WEIGH MODULES

RL1600 HE

Medium-capacity Weigh Modules



Picture is a representation of actual product.

Complete Kit Includes

- One JB4SS NEMA Type 4X stainless steel signal trim junction box
- Three or four RL1600 HE stainless steel compression mounts
- Three or four RL75016WHE stainless steel, hermetically sealed double-ended shear beam load cells
- 25 ft of our hostile environment EL147HE SURVIVOR load cell cable

Standard Features

- Capacities (per module): 1,000 to 25,000lb
- All stainless steel construction
- Self-checking, easy-to-use design allows module to be bolted directly to tank leg without requiring additional mounting plates or load buttons
- Hermetically sealed IP66/69K protected load cells
- Double-ended shear beam design, center loaded

Applications

- Medium-capacity tanks, bins and hoppers
- Bulk material management
- Ingredient batching, mixing and blending

Load Cell Approvals



SURVIVOR
WEIGH MODULES

Order Information

Load Rating (Per Module)	Part #	Price
Single Module (Does Not Include Load Cell)		
1,000 to 5,000 lb	17813	\$657.00
10,000 to 25,000 lb	17815	\$1,283.00
3-Module Kit		
1,000 lb	46723	\$4,563.00
1,500 lb	119673	\$4,563.00
2,000 lb	119675	\$4,563.00
2,500 lb	46724	\$4,563.00
5,000 lb	46725	\$4,563.00
10,000 lb	46726	\$6,540.00
15,000 lb	46727	\$6,540.00
20,000 lb	84664	\$6,540.00
25,000 lb	46728	\$6,540.00
4-Module Kit		
1,000 lb	46729	\$5,753.00
1,500 lb	119674	\$5,753.00
2,000 lb	119676	\$5,753.00
2,500 lb	46730	\$5,753.00
5,000 lb	46731	\$5,753.00
10,000 lb	46732	\$8,554.00
15,000 lb	46733	\$8,554.00
20,000 lb	84665	\$8,554.00
25,000 lb	46734	\$8,554.00
Dummy Load Cells (Mild Steel)		
1,000 to 5,000 lb	18236	\$26.00
10,000 to 25,000 lb	18237	\$42.00

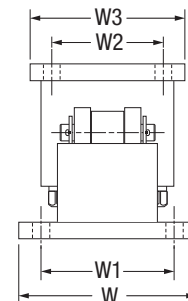
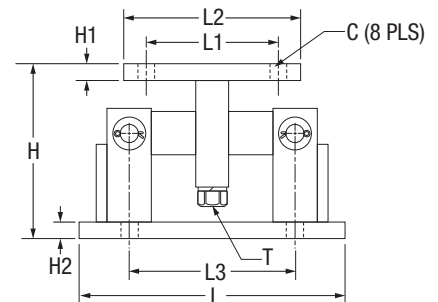
Shims*

	Part #	Price
1,000 lb to 5,000 lb		
0.0625	150852	\$7.00
0.125	150853	\$12.00
0.250	150854	\$18.00
10,000 lb to 25,000 lb		
0.0625	150855	\$19.00
0.125	150856	\$30.00
0.250	150857	\$65.00
50,000 lb to 75,000 lb		
0.0625	150858	\$27.00
0.125	150859	\$38.00
0.250	150861	\$79.00

*Shims match the top plate

Dimensions

Rated Capacity	C	H	H1	H2	L	L1	L2	L3	T	W	W1	W2	W3
1,000 to 5,000 lb/in	0.56	5.00	0.50	0.50	9.25	2.75	4.00	6.25	1/2-13 UNC	5.00	3.75	2.75	4.00
10,000 to 25,000	0.78	7.87	0.75	0.75	12.00	6.00	8.00	7.50	3/4-10 UNC	8.00	6.00	6.00	8.00



RL1855 HE-HS

Medium-capacity Weigh Modules



Picture is a representation of actual product.

Complete Kit Includes

- One JB4SS NEMA Type 4X stainless steel signal trim junction box
- Three or four RL1855 HE stainless steel mounts
- Three or four RL32218S-HE hermetically sealed NTEP Certified load cells
- 25 ft of hostile environment EL147HE SURVIVOR load cell cable

Standard Features

- All stainless steel construction
- Hermetically sealed, stainless steel IP69K
- NTEP Certified load cells, 5,000 d Class III multiple load cell
- Self-checking design with lift off/tip off protection
- Two-year limited warranty

Applications

- Medium-capacity hoppers, bins and tanks
- Batching/blending

Load Cell Approvals



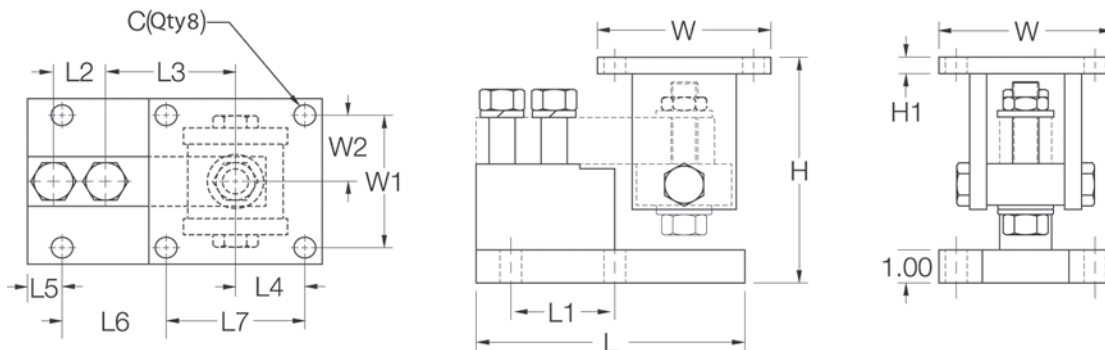
SURVIVOR WEIGH MODULES

Order Information

Load Rating (Per Module)	Part #	Price
Single Modules (Includes Load Cell)		
1,000 lb	170857	\$1,060.00
2,500 lb	170858	\$1,060.00
4,000 lb	170859	\$1,060.00
5,000 lb	170860	\$1,140.00
10,000 lb	170861	\$1,140.00
3-Module Kit		
1,000 lb	170862	\$3,339.00
2,500 lb	170863	\$3,339.00
4,000 lb	170864	\$3,339.00
5,000 lb	170865	\$3,588.00
10,000 lb	170866	\$3,588.00
4-Module Kit		
1,000 lb	170867	\$4,340.00
2,500 lb	170868	\$4,340.00
4,000 lb	170869	\$4,340.00
5,000 lb	170870	\$4,728.00
10,000 lb	170871	\$4,728.00

Dimensions

Rated Capacity C	H min/ max	H1	L	L1	L2	L3	L4	L5	L6	L7	W	W1	W2	
lb/in														
1,000 to 4,000	0.62	5.25/5.56	0.50	6.00	2.00	1.00	3.00	2.00	0.68	1.94	4.00	5.00	4.00	2.00
5,000 to 10,000	0.62	6.12/6.62	0.50	7.75	3.00	1.50	3.75	2.00	1.03	2.97	4.00	5.00	4.00	2.00



RL2100 HE

Heavy-capacity Weigh Modules



Picture is a representation of actual product.

Complete Kit Includes

- One JB4SS NEMA Type 4X stainless steel signal-trim junction box
- Three or four RL2100 HE stainless steel compression mounts
- Three or four RL75060S or RL75058S-LP stainless steel, welded seal double-ended beam load cells
- 25 ft of our hostile environment EL147HE SURVIVOR load cell cable

Standard Features

- All stainless steel construction
- Welded seal, stainless steel load cells, IP67, guaranteed waterproof
- NTEP Certified load cells, 5,000 d, Class III L/10,000 d, Class III L multiple cell
- Bolt-in-place design; module bolts directly to tank leg without requiring additional load buttons or mounting plates
- Self-checking design with lift-off/tip-over protection
- Two-year limited

Applications

- Heavy-capacity tanks, blenders, reactors and bulk inventory management
- Petroleum refining process control
- Blending/batching

Load Cell Approvals

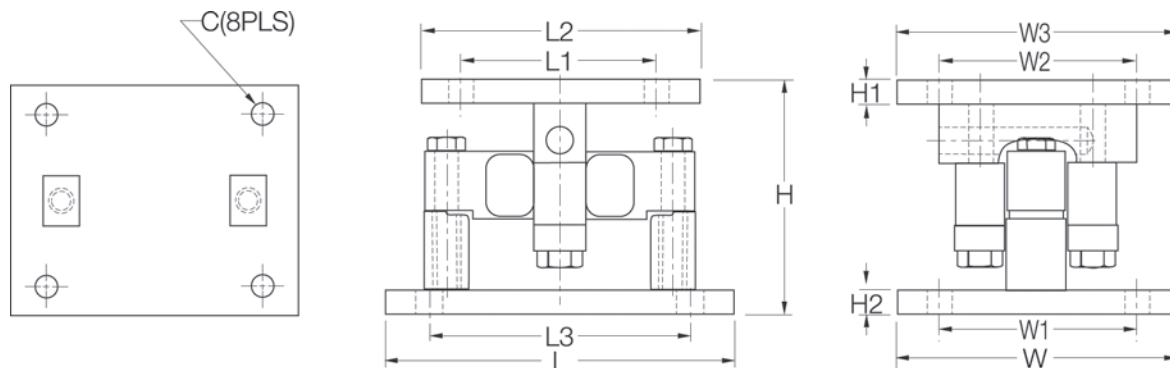


Order Information

Load Rating (Per Module)	Part #	Price
Single Module (Includes Load Cell)		
20,000 lb	32951	\$1,749.00
25,000 lb	65541	\$1,749.00
35,000 lb	32952	\$2,793.00
50,000 lb	32953	\$2,793.00
60,000 lb	32954	\$2,793.00
75,000 lb	32955	\$2,793.00
100,000 lb	32956	\$4,790.00
3-Module Kit		
20,000 lb	32970	\$5,500.00
25,000 lb	65984	\$5,500.00
35,000 lb	32969	\$8,660.00
50,000 lb	32968	\$8,660.00
60,000 lb	32967	\$8,660.00
75,000 lb	32966	\$8,660.00
100,000 lb	32965	\$14,268.00
4-Module Kit		
20,000 lb	32964	\$7,260.00
25,000 lb	65983	\$7,260.00
35,000 lb	32963	\$11,114.00
50,000 lb	32962	\$11,114.00
60,000 lb	32961	\$11,114.00
75,000 lb	32960	\$11,114.00
100,000 lb	32959	\$18,942.00

Dimensions

Rated Capacity	C	H	H1	H2	L	L1	L2	L3	W	W1	W2	W3
lb/in												
20,000 to 25,000	0.78	6.85	0.75	0.75	10.00	6.00	8.00	7.50	8.00	6.00	6.00	8.00
35,000 to 100,000	1.13	9.42	1.00	1.00	16.00	6.50	9.00	11.50	10.00	7.50	6.50	9.00



SURVIVOR WEIGH MODULES