

Bench Scales

TABLE OF CONTENTS

Bench Scales	161	BenchPro™ BP-SB	188
<i>Light-capacity Bench Scale</i>		<i>Ball Top Digital Shipping Scale</i>	
BenchMark® SL	162	BenchPro™ BP-SR	189
<i>Light-capacity Bench Scale</i>		<i>Roller Top Digital Shipping Scale</i>	
BenchMark® CW-80B	163	BenchMark® MSC-10	190
<i>Light-capacity Bench Scale</i>		<i>Mobile Scale Cart</i>	
BenchMark® SL/HE	164	BenchMark® MSC-20	191
<i>Spring Loaded/Hostile Environment Bench Scale</i>		<i>Mobile Scale Cart</i>	
CW-90B	165	BenchMark® MSC-30	192
<i>Light-capacity Bench Scale</i>		<i>Mobile Scale Cart</i>	
CW-90XB	166	BenchMark® MSC-40	193
<i>Light-capacity Bench Scale</i>		<i>Mobile Scale Cart</i>	
Ready-n-Weigh Bench Scale System	167	Bench Scale Ball Transfer	
<i>CW-90B Bench Scale and 380 Indicator Package</i>		and Roller Conveyor	194
Ready-n-Weigh Bench Scale System	168	Bench Scale Columns	195
<i>CW-90B Bench Scale and 680 Indicator Package</i>			
Ready-n-Weigh Bench Scale System	169		
<i>CW-90XB Bench Scale and 380 Indicator Package</i>			
Ready-n-Weigh Bench Scale System	170		
<i>CW-90XB Bench Scale and 680 Indicator Package</i>			
BenchMark® MS	171		
<i>Mild Steel Bench Scale</i>			
BenchMark® SS	172		
<i>Stainless Steel Bench Scale</i>			
BenchMark® HE	173		
<i>Hostile Environment Bench Scale</i>			
BenchMark® HE-X	174		
<i>Hostile Environment Extreme Bench Scale</i>			
BenchMark® LP	176		
<i>Low-profile Bench Scale</i>			
BenchMark® HD	177		
<i>Heavy-duty Bench Scale</i>			
BenchMark® HD-1	178		
<i>Aviation Scale</i>			
BenchMark® HD-2	180		
<i>Aviation Scale</i>			
BenchMark® HD-3	182		
<i>Aviation Scale</i>			
BenchMark® HDP	184		
<i>Heavy-duty Portable Scale</i>			
Versa-portion®	185		
<i>Compact Bench Scale</i>			
BenchPro™ BP-P	186		
<i>Digital Postal Scale</i>			
BenchPro™ BP-S	187		
<i>Digital Shipping Scale</i>			

Product names, logos, brands and other trademarks featured or referred to within this publication are the property of their respective trademark holders.

BenchMark® SL

Light-capacity Bench Scale

BENCH SCALES



Standard Features

- NTEP Certified load cell
- 304 stainless steel construction
- LifeGuard™ base design isolates load cell from overloads and shock loads for added durability
- Specially designed adjustable support feet provide exceptional traction and won't scratch surfaces

Specifications

Load Cell:
IP66, environmentally sealed
Aluminum

Output Impedance:
350 ohm

Maximum Overload:
200%

Overload Protection:
Shock-absorbing spider

Scale Frame:
AISI304L, straight line finish, Ra=45 ± 10

Scale Cover:
AISI304L, straight line finish, Ra=45 ± 10

Cable Length:
10 ft (3 m)

Temperature:
Compensated:
14 °F to 104 °F (-10 °C to 40 °C)

Warranty:
Two-year limited

Approvals:
NTEP 95-072, Class III 5,000 d
Measurement Canada AM-5082
Load cell is NTEP
Load cell is cFMus approved

Approvals



Part Number/Price

Part #	Platform Capacity	Dimensions (L × W × H)	Est. Weight	Price
18575*	2 lb (1 kg)	10 × 10 × 3.15 in	13 lb	\$745.00
18576	5 lb (2.5 kg)	10 × 10 × 3.15 in	13 lb	\$745.00
18577	10 lb (5 kg)	10 × 10 × 3.15 in	13 lb	\$745.00
18578	20 lb (10 kg)	10 × 10 × 3.15 in	13 lb	\$745.00
18579	30 lb (15 kg)	10 × 10 × 3.15 in	13 lb	\$745.00
32914	30 lb (15 kg)	12 × 12 × 3.25 in	14 lb	\$840.00
32913	50 lb (25 kg)	12 × 12 × 3.25 in	14 lb	\$840.00
35198	100 lb (50 kg)	12 × 12 × 3.25 in	14 lb	\$840.00

*Non-NTEP Certified or Measurement Canada approved

Options/Accessories

Part #	Description	Catalog Page #
Consult	Scale columns	See page 195
Consult	Ball transfer and roller conveyor scale tops	See page 194
Consult	Mobile scale carts	See page 190 to page 193

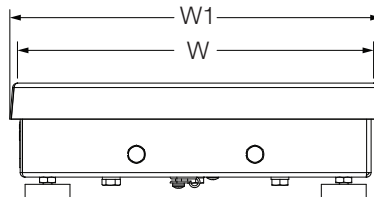
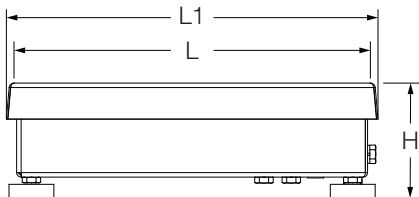
Dimensions

BenchMark SL			
10 × 10 in			
H	3.15 in	W	10.00 in
L	10.00 in	W1	10.25 in
L1	10.25 in		

Note: 1 in = 25.4 mm

12 × 12 in			
H	3.25 in	W	12.00 in
L	12.00 in	W1	12.25 in
L1	12.25 in		

Note: 1 in = 25.4 mm



BenchMark® CW-80B

Light-capacity Bench Scale

BENCH SCALES



Standard Features

- NTEP Certified load cell
- 304 stainless steel construction
- LifeGuard™ base design isolates load cell from overloads and shock loads for added durability
- Specially designed adjustable support feet provide exceptional traction and won't scratch surfaces

Specifications

Load Cell:

IP67 environmentally sealed stainless steel

Output Impedance:

350 ohm

Maximum Overload:

200%

Overload Protection:

Shock-absorbing spider

Scale Frame:

AISI304L, straight line finish, Ra=45 ± 10

Scale Cover:

AISI304L, straight line finish, Ra=45 ± 10

Cable Length:

10 ft (3 m)

Temperature:

Compensated:
14 °F to 104 °F (-10 °C to 40 °C)

Warranty:

Two-year limited

Approvals:

NTEP 96-107, Class III, 3000 d
Measurement Canada AM-5156
Load cell is NTEP
Load cell is FM approved

Approvals



Measurement
Canada
Approved



Part Number/Price

Part #	Platform Capacity	Dimensions (L × W × H)	Est. Weight	Price
35075	6 lb (3 kg)	10 × 10 × 3.15 in	13 lb	\$910.00
35076	10 lb (5 kg)	10 × 10 × 3.15 in	13 lb	\$910.00
35077	15 lb (7 kg)	10 × 10 × 3.15 in	13 lb	\$910.00
35078	30 lb (15 kg)	10 × 10 × 3.15 in	13 lb	\$910.00
35079	30 lb (15 kg)	12 × 12 × 3.25 in	14 lb	\$1,005.00
35080	60 lb (30 kg)	12 × 12 × 3.25 in	14 lb	\$1,005.00

Options/Accessories

Part #	Description	Catalog Page #
Consult	Scale columns	See page 195
Consult	Ball transfer and roller conveyor scale tops	See page 194
Consult	Mobile scale carts	See page 190 to page 193

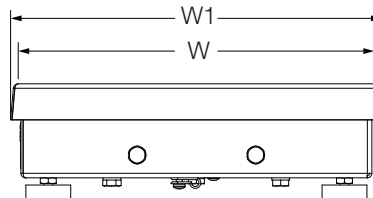
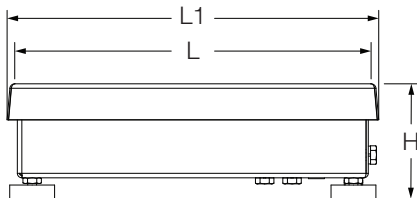
Dimensions

CW-80B			
10 × 10 in			
H	3.15 in	W	10.00 in
L	10.00 in	W1	10.25 in
L1	10.25 in		

Note: 1 in = 25.4 mm

12 × 12 in			
H	3.25 in	W	12.00 in
L	12.00 in	W1	12.25 in
L1	12.25 in		

Note: 1 in = 25.4 mm



BenchMark® SL/HE

Spring Loaded/Hostile Environment Bench Scale

BENCH SCALES



Standard Features

- NTEP Certified load cell
- 304 stainless steel construction
- LifeGuard™ base design isolates load cell from overloads and shock loads for added durability
- Specially designed adjustable support feet provide exceptional traction and won't scratch surfaces

Specifications

Load Cell:

IP69K, hermetically sealed
Stainless steel

Output Impedance:

350 ohm

Maximum Overload:

200%, except 150% for 30 lb

Overload Protection:

Shock-absorbing spider

Scale Frame:

AISI304L, straight line finish, Ra=45 ± 10

Scale Cover:

AISI304L, straight line finish, Ra=45 ± 10

Cable Length:

10 ft (3 m)

Temperature:

Compensated:
14 °F to 104 °F (-10 °C to 40 °C)

Warranty:

Three-year limited
(includes water ingress)

Approvals:

NTEP 95-072, Class III 5,000 d
Measurement Canada AM-5082
Load cell is NTEP
Load cell is FM approved

Approvals



Measurement
Canada
Approved



APPROVED

Part Number/Price

Part #	Platform Capacity	Dimensions (L × W × H)	Est. Weight	Price
86942	5 lb (2.5 kg)	10 × 10 × 3.15 in	13 lb	\$1,355.00
86943	10 lb (5 kg)	10 × 10 × 3.15 in	13 lb	\$1,355.00
86944	20 lb (10 kg)	10 × 10 × 3.15 in	13 lb	\$1,355.00
86945	30 lb (15 kg)	10 × 10 × 3.15 in	13 lb	\$1,355.00
86946	30 lb (15 kg)	12 × 12 × 3.25 in	13 lb	\$1,450.00
86947	50 lb (25 kg)	12 × 12 × 3.25 in	14 lb	\$1,450.00
86948	100 lb (50 kg)	12 × 12 × 3.25 in	14 lb	\$1,450.00

Options/Accessories

Part #	Description	Catalog Page #
Consult	Scale columns	See page 195
Consult	Ball transfer and roller conveyor scale tops	See page 194
Consult	Mobile scale carts	See page 190 to page 193

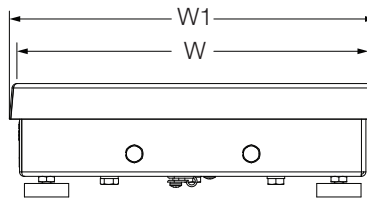
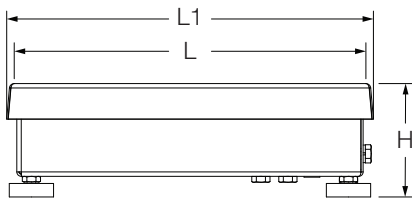
Dimensions

BenchMark SL/HE			
10 × 10 in			
H	3.15 in	W	10.00 in
L	10.00 in	W1	10.25 in
L1	10.25 in		

Note: 1 in = 25.4 mm

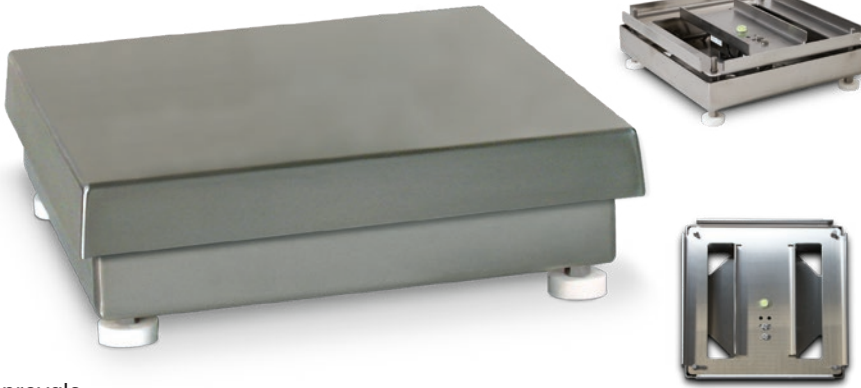
12 × 12 in			
H	3.25 in	W	12.00 in
L	12.00 in	W1	12.25 in
L1	12.25 in		

Note: 1 in = 25.4 mm



CW-90B

Light-capacity Bench Scale



Standard Features

- NTEP Certified load cell
- 304 stainless steel construction
- Meets HACCP requirements
- Five-point overload protection
- Specially designed adjustable support feet provide exceptional traction and will not scratch surfaces

Specifications

Load Cell:

IP67, environmentally sealed
Aluminum

Output Impedance:

350 ohm

Maximum Overload:

180% to 200% depending on capacity

Overload Protection:

Five-point, independently adjusted

Scale Frame:

AISI304L, straight line finish, Ra=45 ± 10

Scale Cover:

AISI304L, straight line finish, Ra=45 ± 10

Cable Length:

34 in (86 cm) or 10 ft (3 m)

Temperature:

Compensated:
14 °F to 104 °F (-10 °C to 40 °C)

Warranty:

Two-year limited

Approvals:

NTEP 95-072, Class III 5,000 d
Measurement Canada AM-5082
NSF
Load cell is NTEP
Load cell is cFMus Approved

Approvals



Measurement
Canada
Approved



Part Number/Price

Part #	Platform Capacity	Dimensions (L × W × H)	Est. Weight	Price	
10 ft cable	34 in cable				
112599	106137	5 lb (2.5 kg)	10 × 10 × 4.25 in	14 lb	\$695.00
112601	106138	10 lb (5 kg)	10 × 10 × 4.25 in	14 lb	\$695.00
112603	106139	25 lb (10 kg)	10 × 10 × 4.25 in	14 lb	\$695.00
112605	106140	25 lb (10 kg)	12 × 12 × 4.25 in	17 lb	\$790.00
112607	106141	50 lb (25 kg)	12 × 12 × 4.25 in	17 lb	\$790.00
112609	106142	100 lb (50 kg)	12 × 12 × 4.25 in	17 lb	\$790.00

Options/Accessories

Part #	Description	Catalog Page #
Consult	Scale columns	See page 195
Consult	Ball transfer and roller conveyor scale tops	See page 194
Consult	Mobile scale carts	See page 190 to page 193

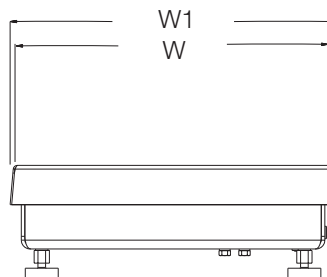
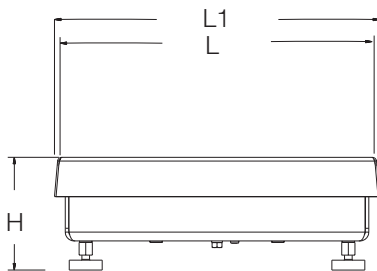
Dimensions

CW-90B			
10 × 10 in			
H	4.25 in	W	10.00 in
L	10.00 in	W1	10.25 in
L1	10.25 in		

Note: 1 in = 25.4 mm

12 × 12 in			
H	4.25 in	W	12.00 in
L	12.00 in	W1	12.25 in
L1	12.25 in		

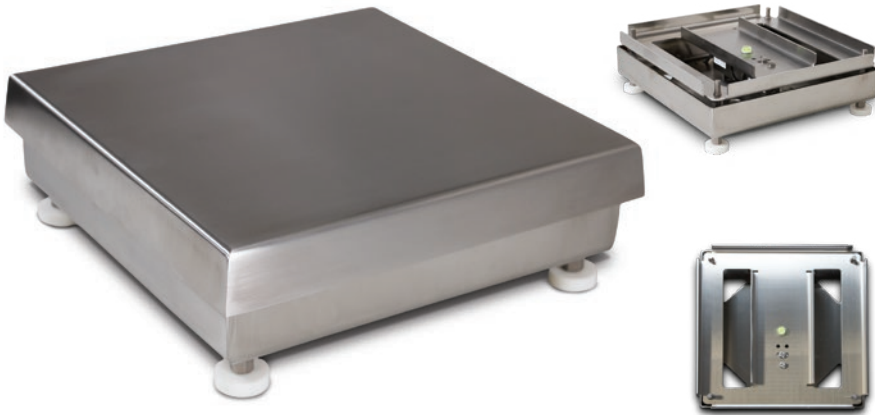
Note: 1 in = 25.4 mm



CW-90XB

Light-capacity Bench Scale

BENCH SCALES



Standard Features

- NTEP Certified load cell
- 304 stainless steel construction
- Meets HACCP requirements
- Five-point overload protection
- Specially designed adjustable support feet provide exceptional traction and will not scratch surfaces

Specifications

Load Cell:

IP69K, hermetically sealed
Stainless steel

Output Impedance:

350 ohm

Maximum Overload:

180% to 200% depending on capacity

Overload Protection:

Five-point, independently adjusted

Scale Frame:

AISI304L, straight line finish, Ra=45 ± 10

Scale Cover:

AISI304L, straight line finish, Ra=45 ± 10

Cable Length:

34 in (86 cm) or 10 ft (3 m)

Temperature:

Compensated:
14 °F to 104 °F (-10 °C to 40 °C)

Warranty:

Three-year limited
(includes water ingress)

Approvals:

NTEP 95-072, Class III 5,000 d
Measurement Canada AM-5082
NSF
Load cell is NTEP
Load cell is FM Approved

Approvals



Measurement
Canada
Approved



Part Number/Price

Part #	Platform Capacity	Dimensions (L × W × H)	Est. Weight	Price	
10 ft Cable 34 in Cable					
112600	106143	5 lb (2.5 kg)	10 × 10 × 4.25 in	14 lb	\$1,285.00
112602	106144	10 lb (5 kg)	10 × 10 × 4.25 in	14 lb	\$1,285.00
112604	106145	25 lb (10 kg)	10 × 10 × 4.25 in	14 lb	\$1,285.00
112606	106146	25 lb (10 kg)	12 × 12 × 4.25 in	17 lb	\$1,380.00
112608	106147	50 lb (25 kg)	12 × 12 × 4.25 in	17 lb	\$1,380.00
112610	106148	100 lb (50 kg)	12 × 12 × 4.25 in	17 lb	\$1,380.00

Options/Accessories

Part #	Description	Catalog Page #
Consult	Scale columns	See page 195
Consult	Ball transfer and roller conveyor scale tops	See page 194
Consult	Mobile scale carts	See page 190 to page 193

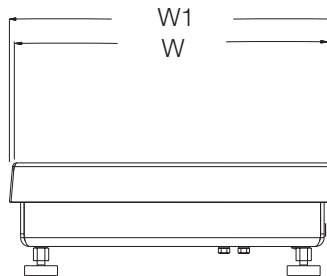
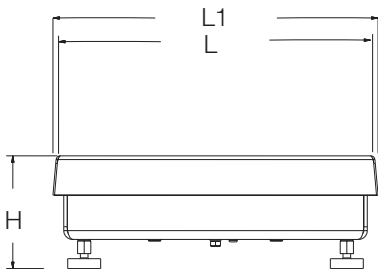
Dimensions

CW-90XB			
10 × 10 in			
H	4.25 in	W	10.00 in
L	10.00 in	W1	10.25 in
L1	10.25 in		

Note: 1 in = 25.4 mm

12 × 12 in			
H	4.25 in	W	12.00 in
L	12.00 in	W1	12.25 in
L1	12.25 in		

Note: 1 in = 25.4 mm



Ready-n-Weigh Bench Scale System

CW-90B Bench Scale and 380 Indicator Package

BENCH SCALES



Approvals



Measurement
Canada
Approved



CW-90B with 380 Package

Part #	Capacity	Dimensions (L x W x H)	Est. Weight	Price
208528	5 lb (2.5 kg)	10 x 10 x 4.25 in	24 lb	\$1,545.00
208529	10 lb (5 kg)	10 x 10 x 4.25 in	24 lb	\$1,545.00
208530	25 lb (10 kg)	10 x 10 x 4.25 in	24 lb	\$1,545.00
208531	25 lb (10 kg)	12 x 12 x 4.25 in	27 lb	\$1,640.00
208532	50 lb (25 kg)	12 x 12 x 4.25 in	27 lb	\$1,640.00
208533	100 lb (50 kg)	12 x 12 x 4.25 in	27 lb	\$1,640.00

Options/Accessories

Part #	Description	Price
206433†	External AC adapter	\$60.00
204258	Real-time clock module	\$127.00

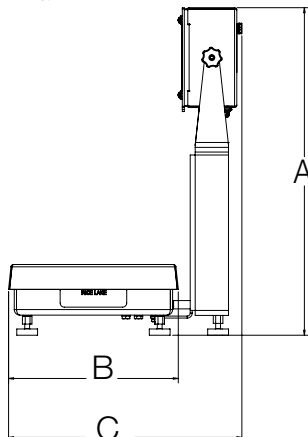


† US plug (NA) - Type A

Dimensions

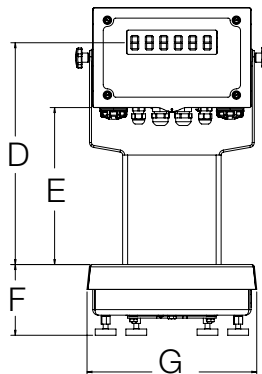
CW-90B Bench Scale and 380 Indicator 10 x 10 in			
A	19.56 in	E	9.43 in
B	10.20 in	F	4.25 in
C	14.02 in	G	10.20 in
D	13.36 in		

Note: 1 in = 25.4 mm



12 x 12 in			
A	19.56 in	E	9.30 in
B	12.38 in	F	4.25 in
C	16.10 in	G	12.35 in
D	13.23 in		

Note: 1 in = 25.4 mm



Standard Features

- Package includes scale, NTEP Certified load cell, indicator and 12-inch column
- Factory calibrated with indicator setup and configured for 5,000 divisions
- Scale includes rubber feet to provide exceptional traction and avoid scratching surfaces along with removable top cover for ease of cleaning
- Optional battery backed time and date
- Standard RS-232 serial port for connecting to a variety of peripherals
- Powered by four alkaline C-cell batteries (not included) or external AC adapter (not included)

CW-90B Specifications

Load Cell:

IP67, environmentally sealed aluminum

Scale Construction:

304 stainless steel

Maximum Overload:

180% to 200% depending on capacity

Overload Protection:

Five-point, independently adjusted

Scale Frame:

AISI304L, straight line finish, Ra=45 ± 10

Scale Cover:

AISI304L, straight line finish, Ra=45 ± 10

Cable Length:

34 in (86 cm)

Temperature:

Compensated:
14 °F to 104 °F (-10 °C to 40 °C)

Warranty:

Two-year limited

Approvals:

NTEP 21-051, Class III 5,000 d
Measurement Canada AM-6184
NSF
Load cell is NTEP
Load cell is cFmus Approved

380 Specifications

Power:

Batteries: Four alkaline C-cell (not included)
Optional: 115/230 VAC to 12 VAC adapter

Battery Life:

100 hours on alkaline batteries with one 350 ohm load cell, no backlight

Communication Ports:

One full-duplex RS-232 (three-wire)
One USB 2.0

Display:

Six 1 in (25 mm) tall, LCD digits

Annunciators:

g, lb, t, tn, kg, oz, battery level, PT, LT, gross, zero, unstable, net

Keys/Buttons:

Five tactile buttons

Rating/Material:

IP66, 304 stainless steel

Warranty:

Two-year limited

Approvals:

NTEP 21-051
Measurement Canada AM-6184
CE Marked
cULus Listed

Ready-n-Weigh Bench Scale System

CW-90B Bench Scale and 680 Indicator Package

BENCH SCALES



Scale
and
Indicator
Package

Approvals



Measurement
Canada
Approved



CW-90B with 680 Package

Part #	Platform Capacity	Dimensions (L × W × H)	Est. Weight	Price
115-230 VAC, LED, Numeric, US Plug-Type B				
201308	5 lb (2.5 kg)	10 × 10 × 4.25 in	24 lb	\$1,865.00
201309	10 lb (5 kg)	10 × 10 × 4.25 in	24 lb	\$1,865.00
201310	25 lb (10 kg)	10 × 10 × 4.25 in	24 lb	\$1,865.00
201311	25 lb (10 kg)	12 × 12 × 4.25 in	27 lb	\$1,960.00
201312	50 lb (25 kg)	12 × 12 × 4.25 in	27 lb	\$1,960.00
201313	100 lb (50 kg)	12 × 12 × 4.25 in	27 lb	\$1,960.00
115-230 VAC, LED, Numeric, Euro Plug-Type E				
201314	5 lb (2.5 kg)	10 × 10 × 4.25 in	24 lb	\$1,865.00
201315	10 lb (5 kg)	10 × 10 × 4.25 in	24 lb	\$1,865.00
201319	25 lb (10 kg)	10 × 10 × 4.25 in	24 lb	\$1,865.00
201320	25 lb (10 kg)	12 × 12 × 4.25 in	27 lb	\$1,960.00
201321	50 lb (25 kg)	12 × 12 × 4.25 in	27 lb	\$1,960.00
201322	100 lb (50 kg)	12 × 12 × 4.25 in	27 lb	\$1,960.00



* US plug (NA) - Type B

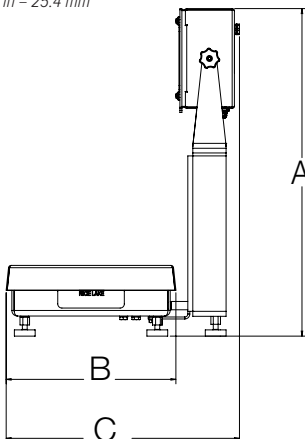


** Euro Plug - Type E

Dimensions

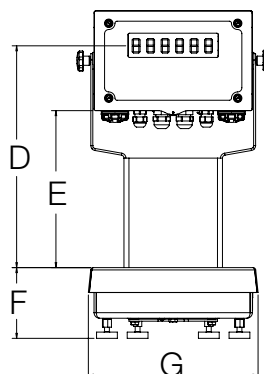
CW-90B Bench Scale and 680 Indicator			
10 × 10 in			
A	19.56 in	E	9.31 in
B	10.25 in	F	4.25 in
C	15.83 in	G	10.25 in
D	13.31 in		

Note: 1 in = 25.4 mm



12 × 12 in			
A	19.56 in	E	9.31 in
B	12.25 in	F	4.25 in
C	16.83 in	G	12.25 in
D	13.31 in		

Note: 1 in = 25.4 mm



Standard Features

- Package includes scale, NTEP Certified load cell, indicator and 12-inch column
- Factory calibrated with indicator setup and configured for 5,000 divisions
- Scale includes rubber feet to provide exceptional traction and avoid scratching surfaces along with removable top cover for ease of cleaning
- Battery backed time and date
- Standard RS-232 serial ports for connecting to a variety of peripheral

CW-90B Specifications

Load Cell:

IP67, environmentally sealed
Aluminum

Scale Construction:

304 stainless steel

Maximum Overload:

180% to 200% depending on capacity

Overload Protection:

Five-point, independently adjusted

Scale Frame:

AISI304L, straight line finish, Ra=45 ± 10

Scale Cover:

AISI304L, straight line finish, Ra=45 ± 10

Cable Length:

34 in (86 cm)

Temperature:

Compensated:
14 °F to 104 °F (-10 °C to 40 °C)

Warranty:

Two-year limited

Approvals:

NTEP 95-072, Class III 5,000 d
Measurement Canada AM-5082
NSF
Load cell is NTEP
Load cell is cFMus Approved

680 Specifications

Power:

Line voltage: 100 to 240 VAC
Frequency: 50/60 Hz

Communication Ports:

Two full-duplex RS-232
RS-485/422 (five-wire)
Micro USB (device)
Ethernet TCP/IP (10/100)

Display:

Seven 0.8 in (20 mm) tall, seven-segment digits

Annunciators:

Eight LED annunciators

Keys/Buttons:

Flat membrane panel, tactile feel
(18 buttons plus ON/OFF)

Rating/Material:

IP69K (IP66 with RJ45)
AISI 304 stainless Steel

Warranty:

Two-year limited

Approvals:

NTEP 19-021
Measurement Canada AM-6121C
CE Marked
cULus Listed

Ready-n-Weigh Bench Scale System

CW-90XB Bench Scale and 380 Indicator Package



Standard Features

- Package includes scale, NTEP Certified load cell, indicator and 12-inch column
- Factory calibrated with indicator setup and configured for 5,000 divisions
- Scale includes rubber feet to provide exceptional traction and avoid scratching surfaces along with a removable top cover for ease of cleaning
- Optional battery backed time and date
- Standard RS-232 serial port for connecting to a variety of peripherals
- Powered by four alkaline C-cell batteries (not included) or external AC adapter (not included)

CW-90XB Specifications

Load Cell:

IP69K, hermetically sealed
Stainless steel

Scale Construction:

304 stainless steel

Maximum Overload:

180% to 200% depending on capacity

Overload Protection:

Five-point, independently adjusted

Scale Frame:

AISI304L, straight line finish, Ra = 45 ± 10

Scale Cover:

AISI304L, straight line finish, Ra = 45 ± 10

Cable Length:

34 in (86 cm)

Temperature:

Compensated:
14 °F to 104 °F (-10 °C to 40 °C)

Warranty:

Three-year limited
(includes water ingress)

Approvals:

NTEP 95-072, Class III 5,000 d
Measurement Canada AM-5082
Load cell is NTEP
Load cell is FM approved

380 Specifications

Power:

Batteries: Four alkaline C-cell (not included)
Optional: 115/230 VAC to 12 VDC adapter

Battery Life:

100 hours on alkaline batteries with one 350 ohm load cell, no backlight

Communication Ports:

One full-duplex RS-232 (three-wire)
One USB 2.0

Display:

Six 1 in (25 mm) tall, LCD digits

Status Annunciators:

g, lb, t, tn, kg, oz, battery level, PT, LT, gross, zero, unstable, net

Keys/Buttons:

Five tactile buttons

Rating/Material:

IP66, 304 Stainless steel

Warranty:

Two-year limited

Approvals:

NTEP 21-051
Measurement Canada AM-6184
CE Marked
cULus Listed

Approvals



Measurement
Canada
Approved



CW-90XB with 380 Package

Part #	Capacity	Dimensions (L × W × H)	Est. Weight	Price
208543	5 lb (2.5 kg)	10 × 10 × 4.25 in	24 lb	\$2,135.00
208544	10 lb (5 kg)	10 × 10 × 4.25 in	24 lb	\$2,135.00
208545	25 lb (10 kg)	10 × 10 × 4.25 in	24 lb	\$2,135.00
208546	25 lb (10 kg)	12 × 12 × 4.25 in	27 lb	\$2,230.00
208547	50 lb (25 kg)	12 × 12 × 4.25 in	27 lb	\$2,230.00
208548	100 lb (50 kg)	12 × 12 × 4.25 in	27 lb	\$2,230.00

Options/Accessories

Part #	Description	Price
206433†	External AC adapter	\$60.00
204258	Real-time clock module	\$127.00

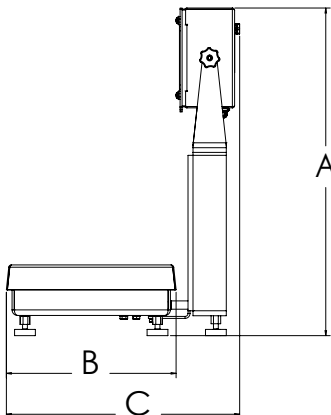


† US plug (NA) - Type A

Dimensions

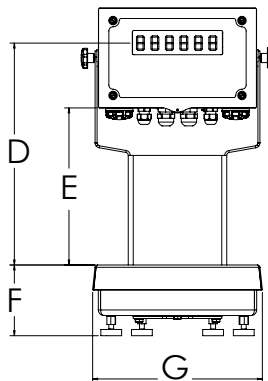
CW-90XB Bench Scale and 380 Indicator			
10 × 10 in			
A	19.56 in	E	9.44 in
B	10.20 in	F	4.25 in
C	14.02 in	G	10.20 in
D	13.36 in		

Note: 1 in = 25.4 mm



12 × 12 in			
A	19.56 in	E	9.31 in
B	12.29 in	F	4.25 in
C	16.07 in	G	12.29 in
D	13.23 in		

Note: 1 in = 25.4 mm



Ready-n-Weigh Bench Scale System

CW-90XB Bench Scale and 680 Indicator Package

BENCH SCALES



Approvals



Measurement
Canada
Approved



CW-90XB with 680 Package

Part #	Platform Capacity	Dimensions (L × W × H)	Est. Weight	Price
115-230 VAC, LED, Numeric, US Plug-Type B				
201409	5 lb (2.5 kg)	10 × 10 × 4.25 in	24 lb	\$2,455.00
201410	10 lb (5 kg)	10 × 10 × 4.25 in	24 lb	\$2,455.00
201411	25 lb (10 kg)	10 × 10 × 4.25 in	24 lb	\$2,455.00
201412	25 lb (10 kg)	12 × 12 × 4.25 in	27 lb	\$2,550.00
201413	50 lb (25 kg)	12 × 12 × 4.25 in	27 lb	\$2,550.00
201414	100 lb (50 kg)	12 × 12 × 4.25 in	27 lb	\$2,550.00
115-230 VAC, LED, Numeric, Euro Plug-Type E				
201415	5 lb (2.5 kg)	10 × 10 × 4.25 in	24 lb	\$2,455.00
201416	10 lb (5 kg)	10 × 10 × 4.25 in	24 lb	\$2,455.00
201417	25 lb (10 kg)	10 × 10 × 4.25 in	24 lb	\$2,455.00
201418	25 lb (10 kg)	12 × 12 × 4.25 in	27 lb	\$2,550.00
201419	50 lb (25 kg)	12 × 12 × 4.25 in	27 lb	\$2,550.00
201420	100 lb (50 kg)	12 × 12 × 4.25 in	27 lb	\$2,550.00



† US plug (NA) - Type B

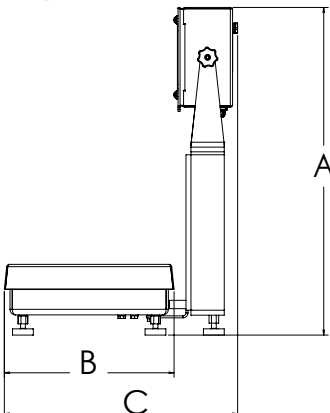


†† Euro Plug - Type E

Dimensions

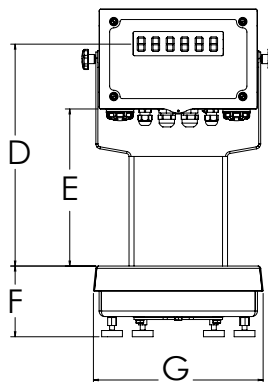
CW-90XB Bench Scale and 680 Indicator			
10 × 10 in			
A	19.56 in	E	9.31 in
B	10.25 in	F	4.25 in
C	15.83 in	G	10.25 in
D	13.31 in		

Note: 1 in = 25.4 mm



12 × 12 in			
A	19.56 in	E	9.31 in
B	12.25 in	F	4.25 in
C	16.83 in	G	12.25 in
D	13.31 in		

Note: 1 in = 25.4 mm



Standard Features

- Package includes scale, NTEP Certified load cell, indicator and 12-inch column
- Factory calibrated with indicator setup and configured for 5,000 divisions
- Scale includes rubber feet to provide exceptional traction and avoid scratching surfaces along with removable top cover for ease of cleaning
- Battery backed time and date
- Standard RS-232 serial ports for connecting to a variety of peripherals

CW-90XB Specifications

Load Cell:

IP69K, hermetically sealed
Stainless steel

Scale Construction:

304 stainless steel

Maximum Overload:

180% to 200% depending on capacity

Overload Protection:

Five-point, independently adjusted

Scale Frame:

AISI304L, straight line finish, Ra = 45 ± 10

Scale Cover:

AISI304L, straight line finish, Ra = 45 ± 10

Cable Length:

34 in (86 cm)

Temperature:

Compensated:
14 °F to 104 °F (-10 °C to 40 °C)

Warranty:

Three-year limited
(includes water ingress)

Approvals:

NTEP 95-072, Class III 5,000 d
Measurement Canada AM-5082
Load cell is NTEP
Load cell is FM approved

680 Specifications

Power:

Line voltage: 100 to 240 VAC
Frequency: 50/60 Hz

Communication Ports:

Two full-duplex RS-232
RS-485/422 (five-wire)
Micro USB (device)
Ethernet TCP/IP (10/100)

Display:

Seven 0.8-inch (20 mm) tall, seven-segment digits

Annunciators:

Eight LED annunciators

Keys/Buttons:

Flat membrane panel, tactile feel
(18 buttons plus ON/OFF)

Rating/Material:

IP69K (IP66 with RJ45)
AISI 304 stainless steel

Warranty:

Two-year limited

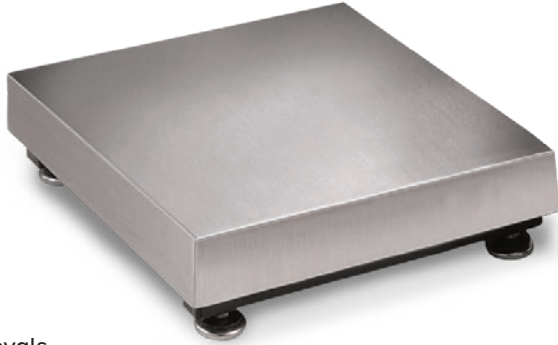
Approvals:

NTEP 19-021
Measurement Canada AM-6121C
CE Marked
cULus Listed

BenchMark® MS

Mild Steel Bench Scale

BENCH SCALES



Standard Features

- NTEP Certified load cell
- Painted mild steel frame with 304 stainless steel cover
- Base design isolates load cell from overloads and shock loads for added durability
- Specially designed adjustable support feet provide exceptional traction and will not scratch surfaces

Specifications

Load Cell:

IP66, environmentally sealed
Aluminum

Output Impedance:

350 ohm

Maximum Overload:

150% to 200% depending on capacity

Overload Protection:

Five-point, independently adjusted

Scale Frame:

Mild steel powder coated black

Scale Cover:

AISI304L, straight line finish, Ra=45 ± 10

Cable Length:

10 ft (3 m)

Temperature:

Compensated:
14 °F to 104 °F (-10 °C to 40 °C)

Warranty:

Two-year limited

Approvals:

NTEP 95-072, Class III, 5,000 d
Measurement Canada AM-5082
Load cell is NTEP
Load cell is FM/cFmus approved

Approvals



Measurement
Canada
Approved



† Load cell
approval



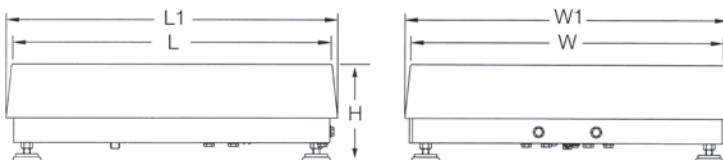
†† Load cell
approval

Part Number/Price

Part #	Capacity	Platform Dimensions (L x W x H)	Est. Weight	Price
18580 †	30 lb (15 kg)	12 x 12 x 4.12 in	20 lb	\$935.00
18582 †	50 lb (25 kg)	12 x 12 x 4.12 in	20 lb	\$935.00
18584 †	100 lb (50 kg)	12 x 12 x 4.12 in	20 lb	\$935.00
18586 ††	50 lb (25 kg)	12 x 18 x 4.12 in	37 lb	\$1,030.00
18588 ††	100 lb (50 kg)	12 x 18 x 4.12 in	37 lb	\$1,030.00
18590 †	50 lb (25 kg)	18 x 18 x 5.25 in	68 lb	\$1,270.00
18592 †	100 lb (50 kg)	18 x 18 x 5.25 in	68 lb	\$1,270.00
18594 †	150 lb (75 kg)	18 x 18 x 5.25 in	68 lb	\$1,270.00
18596 †	200 lb (100 kg)	18 x 18 x 5.25 in	68 lb	\$1,270.00
18598 †	250 lb (125 kg)	18 x 18 x 5.25 in	68 lb	\$1,270.00
18600 †	300 lb (150 kg)	18 x 18 x 5.25 in	68 lb	\$1,270.00
18602 †	500 lb (250 kg)	18 x 18 x 5.25 in	68 lb	\$1,270.00
18604 ††	1,000 lb (500 kg)	18 x 18 x 5.25 in	68 lb	\$1,270.00
18606 †	50 lb (25 kg)	24 x 18 x 5.25 in	78 lb	\$1,400.00
18608 †	100 lb (50 kg)	24 x 18 x 5.25 in	78 lb	\$1,400.00
18610 †	150 lb (75 kg)	24 x 18 x 5.25 in	78 lb	\$1,400.00
18612 †	200 lb (100 kg)	24 x 18 x 5.25 in	78 lb	\$1,400.00
18614 †	250 lb (125 kg)	24 x 18 x 5.25 in	78 lb	\$1,400.00
18616 †	300 lb (150 kg)	24 x 18 x 5.25 in	78 lb	\$1,400.00
18618 †	500 lb (250 kg)	24 x 18 x 5.25 in	78 lb	\$1,400.00
18620 ††	1,000 lb (500 kg)	24 x 18 x 5.25 in	78 lb	\$1,400.00
18622 †	100 lb (50 kg)	24 x 24 x 5.25 in	78 lb	\$1,545.00
18624 †	150 lb (75 kg)	24 x 24 x 5.25 in	84 lb	\$1,545.00
18626 †	200 lb (100 kg)	24 x 24 x 5.25 in	84 lb	\$1,545.00
18628 †	250 lb (125 kg)	24 x 24 x 5.25 in	84 lb	\$1,545.00
18630 †	300 lb (150 kg)	24 x 24 x 5.25 in	84 lb	\$1,545.00
18632 †	500 lb (250 kg)	24 x 24 x 5.25 in	84 lb	\$1,545.00
18634 ††	1,000 lb (500 kg)	24 x 24 x 5.25 in	84 lb	\$1,545.00

Options/Accessories

Part #	Description	Catalog Page #
Consult	Scale columns	See page 195
Consult	Ball transfer and roller conveyor scale tops	See page 194
Consult	Mobile scale carts	See page 190 to page 193



Dimensions

BenchMark MS			
12 x 12 in			
H	4.12 in	W	12.00 in
L	12.00 in	W1	12.50 in
L1	12.50 in		
12 x 18 in			
H	4.12 in	W	18.00 in
L	12.00 in	W1	18.50 in
L1	12.50 in		
18 x 18 in			
H	5.25 in	W	18.00 in
L	18.00 in	W1	18.75 in
L1	18.75 in		
24 x 18 in			
H	5.25 in	W	18.00 in
L	24.00 in	W1	18.75 in
L1	24.75 in		
24 x 24 in			
H	5.25 in	W	24.00 in
L	24.00 in	W1	24.75 in
L1	24.75 in		

Note: 1 in = 25.4 mm

BenchMark® SS

Stainless Steel Bench Scale

BENCH SCALES



Approvals



Measurement
Canada
Approved



APPROVED
† Load cell
approval



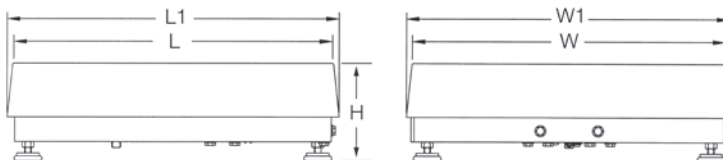
APPROVED
†† Load cell
approval

Part Number/Price

Part #	Capacity	Platform Dimensions (L × W × H)	Est. Weight	Price
186222 †	50 lb (25 kg)	12 × 18 × 4.00 in	37 lb	\$1,095.00
186223 †	100 lb (50 kg)	12 × 18 × 4.00 in	37 lb	\$1,095.00
18591 †	50 lb (25 kg)	18 × 18 × 5.25 in	68 lb	\$1,515.00
18593 †	100 lb (50 kg)	18 × 18 × 5.25 in	68 lb	\$1,515.00
18595 †	150 lb (75 kg)	18 × 18 × 5.25 in	68 lb	\$1,515.00
18597 †	200 lb (100 kg)	18 × 18 × 5.25 in	68 lb	\$1,515.00
18599 †	250 lb (125 kg)	18 × 18 × 5.25 in	68 lb	\$1,515.00
18601 †	300 lb (150 kg)	18 × 18 × 5.25 in	68 lb	\$1,515.00
18603 †	500 lb (250 kg)	18 × 18 × 5.25 in	68 lb	\$1,515.00
18605 ††	1,000 lb (500 kg)	18 × 18 × 5.25 in	68 lb	\$1,515.00
18607 †	50 lb (25 kg)	24 × 18 × 5.25 in	78 lb	\$1,800.00
18609 †	100 lb (50 kg)	24 × 18 × 5.25 in	78 lb	\$1,800.00
18611 †	150 lb (75 kg)	24 × 18 × 5.25 in	78 lb	\$1,800.00
18613 †	200 lb (100 kg)	24 × 18 × 5.25 in	78 lb	\$1,800.00
18615 †	250 lb (125 kg)	24 × 18 × 5.25 in	78 lb	\$1,800.00
18617 †	300 lb (150 kg)	24 × 18 × 5.25 in	78 lb	\$1,800.00
18619 †	500 lb (250 kg)	24 × 18 × 5.25 in	78 lb	\$1,800.00
18621 ††	1,000 lb (500 kg)	24 × 18 × 5.25 in	78 lb	\$1,800.00
18623 †	100 lb (50 kg)	24 × 24 × 5.25 in	84 lb	\$2,215.00
18625 †	150 lb (75 kg)	24 × 24 × 5.25 in	84 lb	\$2,215.00
18627 †	200 lb (100 kg)	24 × 24 × 5.25 in	84 lb	\$2,215.00
18629 †	250 lb (125 kg)	24 × 24 × 5.25 in	84 lb	\$2,215.00
18631 †	300 lb (150 kg)	24 × 24 × 5.25 in	84 lb	\$2,215.00
18633 †	500 lb (250 kg)	24 × 24 × 5.25 in	84 lb	\$2,215.00
18635 ††	1,000 lb (500 kg)	24 × 24 × 5.25 in	84 lb	\$2,215.00

Options/Accessories

Part #	Description	Catalog Page #
Consult	Scale columns	See page 195
Consult	Ball transfer and roller conveyor scale tops	See page 194
Consult	Mobile scale carts	See page 190 to page 193



Standard Features

- NTEP Certified load cell
- 304 stainless steel frame and cover
- Base design isolates load cell from overloads and shock loads for added durability
- Specially designed adjustable support feet provide exceptional traction and will not scratch surfaces

Specifications

Load Cell:

IP66, environmentally sealed
Aluminum

Output Impedance:

350 ohm

Maximum Overload:

150% to 200% depending on capacity

Overload Protection:

Five-point, independently adjusted

Scale Frame:

AISI304L, glass bead blasted for even appearance

Scale Cover:

AISI304L, straight line finish, Ra=45 ±10

Cable Length:

10 ft (3 m)

Temperature:

Compensated:
14 °F to 104 °F (-10 °C to 40 °C)

Warranty:

Two-year limited

Approvals:

NTEP 95-072, Class III, 5,000 d
Measurement Canada AM-5082
Load cell is NTEP
Load cell is FM/cFMus approved

Dimensions

BenchMark SS			
12 × 18 in			
H	4.00 in	W	18.00 in
L	12.00 in	W1	18.50 in
L1	12.50 in		
18 × 18 in			
H	5.25 in	W	18.00 in
L	18.00 in	W1	18.75 in
L1	18.75 in		
18 × 24 in			
H	5.25 in	W	18.00 in
L	24.00 in	W1	18.75 in
L1	24.75 in		
24 × 24 in			
H	5.25 in	W	24.00 in
L	24.00 in	W1	24.75 in
L1	24.75 in		

Note: 1 in = 25.4 mm



Standard Features

- NTEP Certified load cell
- 304 stainless steel frame and cover
- Base design isolates load cell from overloads and shock loads for added durability
- Specially designed adjustable support feet provide exceptional traction and will not scratch surfaces

Specifications

- Load Cell:**
IP69K, hermetically sealed stainless steel
- Output Impedance:**
1,000 ohm
- Maximum Overload:**
150% to 200% depending on capacity
- Overload Protection:**
Five-point, independently adjusted
- Scale Frame:**
AISI304L, glass bead blasted for even appearance
- Scale Cover:**
AISI304L, straight line finish, Ra=45 ± 10
- Cable Length:**
10 ft (3 m)
- Temperature:**
Compensated:
14 °F to 104 °F (-10 °C to 40 °C)
- Warranty:**
Three-year limited (includes water ingress)
- Approvals:**
NTEP 95-072, Class III, 5,000 d
Measurement Canada AM-5082
Load cell is NTEP
Load cell is FM approved

Approvals



Measurement
Canada
Approved

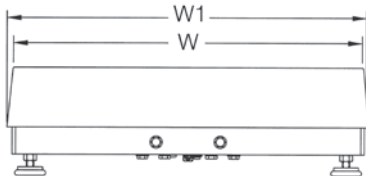


Part Number/Price

Part #	Capacity	Platform Dimensions (L × W × H)	Est. Weight	Price
186897	50 lb (25 kg)	12 × 18 × 4.00 in	37 lb	\$1,555.00
186898	100 lb (50 kg)	12 × 18 × 4.00 in	37 lb	\$1,555.00
86952	50 lb (25 kg)	18 × 18 × 5.25 in	68 lb	\$1,870.00
86953	100 lb (50 kg)	18 × 18 × 5.25 in	68 lb	\$1,870.00
86954	150 lb (75 kg)	18 × 18 × 5.25 in	68 lb	\$1,870.00
86955	200 lb (100 kg)	18 × 18 × 5.25 in	68 lb	\$1,870.00
86956	250 lb (125 kg)	18 × 18 × 5.5 in	68 lb	\$2,235.00
86957	300 lb (150 kg)	18 × 18 × 5.5 in	68 lb	\$2,235.00
86958	500 lb (250 kg)	18 × 18 × 5.5 in	68 lb	\$2,235.00
86959	1,000 lb (500 kg)	18 × 18 × 5.5 in	68 lb	\$2,235.00
86960	50 lb (25 kg)	24 × 18 × 5.5 in	78 lb	\$2,525.00
86961	100 lb (50 kg)	24 × 18 × 5.5 in	78 lb	\$2,525.00
86962	150 lb (75 kg)	24 × 18 × 5.5 in	78 lb	\$2,525.00
86963	200 lb (100 kg)	24 × 18 × 5.5 in	78 lb	\$2,525.00
86964	250 lb (125 kg)	24 × 18 × 5.5 in	78 lb	\$2,525.00
86965	300 lb (150 kg)	24 × 18 × 5.5 in	78 lb	\$2,525.00
86966	500 lb (250 kg)	24 × 18 × 5.5 in	78 lb	\$2,525.00
86967	1,000 lb (500 kg)	24 × 18 × 5.5 in	78 lb	\$2,525.00
86968	100 lb (50 kg)	24 × 24 × 5.5 in	84 lb	\$2,940.00
86969	150 lb (75 kg)	24 × 24 × 5.5 in	84 lb	\$2,940.00
86970	200 lb (100 kg)	24 × 24 × 5.5 in	84 lb	\$2,940.00
86971	250 lb (125 kg)	24 × 24 × 5.5 in	84 lb	\$2,940.00
86972	300 lb (150 kg)	24 × 24 × 5.5 in	84 lb	\$2,940.00
86973	500 lb (250 kg)	24 × 24 × 5.5 in	84 lb	\$2,940.00
86974	1,000 lb (500 kg)	24 × 24 × 5.5 in	84 lb	\$2,940.00

Options/Accessories

Part #	Description	Catalog Page #
Consult	Scale columns	See page 195
Consult	Ball transfer and roller conveyor scale tops	See page 194
Consult	Mobile scale carts	See page 190 to page 193



Dimensions

BenchMark HE			
12 × 18 in			
H	4.00 in	W	18.00 in
L	12.00 in	W1	18.50 in
L1	12.50 in		
18 × 18 × 5.25 in			
H	5.25 in	W	18.00 in
L	18.00 in	W1	18.75 in
L1	18.75 in		
18 × 18 × 5.5 in			
H	5.50 in	W	18.00 in
L	18.00 in	W1	18.75 in
L1	18.75 in		
18 × 24 in			
H	5.50 in	W	18.00 in
L	24.00 in	W1	18.75 in
L1	24.75 in		
24 × 24 in			
H	5.50 in	W	24.00 in
L	24.00 in	W1	24.75 in
L1	24.75 in		

Note: 1 in = 25.4 mm

BenchMark® HE-X

Hostile Environment Extreme Bench Scale

BENCH SCALES



Specifications

Load Cell:

IP69K, hermetically sealed
Stainless steel

Output Impedance:

1,000 ohm

Maximum Overload:

150% to 200% depending on capacity

Overload Protection:

Five-point, independently adjusted

Scale Frame:

AISI304L, glass bead blasted for even appearance

Scale Cover:

AISI304L, straight line finish, Ra=45 ± 10

Cable Length:

10 ft (3 m)

Temperature:

Compensated:
14 °F to 104 °F (-10 °C to 40 °C)

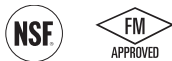
Warranty:

Three-year limited
(includes water ingress)

Approvals:

NSF
Load cell is NTEP
Load cell is FM approved

Approvals



Standard Features

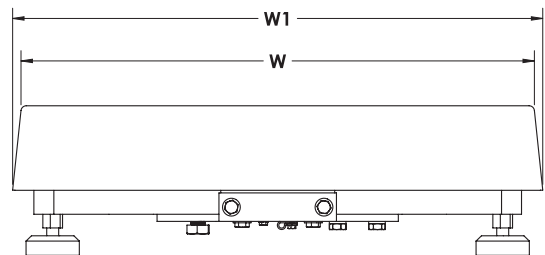
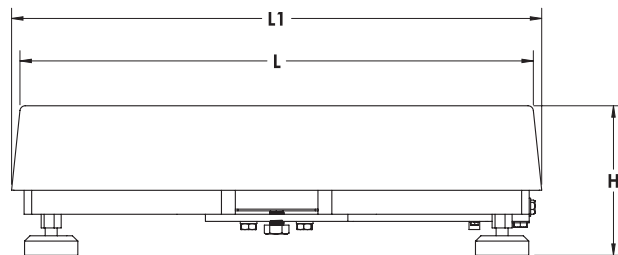
- NTEP, IP69K Certified load cell
- Washdown design
- 304 stainless steel frame and cover constructed with continuous welds
- Removable cover
- Four adjustable stainless steel support feet
- Meets sanitary design principles
- Meets HACCP requirements

Dimensions

BenchMark HE-X			
12 × 12 in			
H	5.25 in	W	18.00 in
L	12.00 in	W1	18.50 in
L1	12.50 in		
18 × 18 in			
H	5.25 in	W	18.00 in
L	18.00 in	W1	18.75 in
L1	18.75 in		

18 × 24 in			
H	5.25 in	W	24.00 in
L	18.00 in	W1	24.75 in
L1	18.75 in		
24 × 24 in			
H	5.25 in	W	24.00 in
L	24.00 in	W1	24.75 in
L1	24.75 in		

Note: 1 in = 25.4 mm



Part Number/Price

Part #	Capacity	Platform Dimensions (L x W x H)	Est. Weight	Price
192346	50 lb (25 kg)	12 x 18 x 5.25 in	59 lb	\$3,075.00
192347	100 lb (50 kg)	12 x 18 x 5.25 in	59 lb	\$3,075.00
191455	50 lb (25 kg)	18 x 18 x 5.25 in	73 lb	\$3,255.00
191456	100 lb (50 kg)	18 x 18 x 5.25 in	73 lb	\$3,255.00
191457	150 lb (75 kg)	18 x 18 x 5.25 in	73 lb	\$3,255.00
191458	200 lb (100 kg)	18 x 18 x 5.25 in	73 lb	\$3,255.00
191459	250 lb (125 kg)	18 x 18 x 5.25 in	73 lb	\$3,255.00
191460	300 lb (150 kg)	18 x 18 x 5.25 in	73 lb	\$3,255.00
191461	500 lb (250 kg)	18 x 18 x 5.25 in	73 lb	\$3,255.00
191462	1,000 lb (500 kg)	18 x 18 x 5.25 in	73 lb	\$3,255.00
191467	50 lb (25 kg)	18 x 24 x 5.25 in	90 lb	\$3,515.00
191469	100 lb (50 kg)	18 x 24 x 5.25 in	90 lb	\$3,515.00
191470	150 lb (75 kg)	18 x 24 x 5.25 in	90 lb	\$3,515.00
191472	200 lb (100 kg)	18 x 24 x 5.25 in	90 lb	\$3,515.00
191473	250 lb (125 kg)	18 x 24 x 5.25 in	90 lb	\$3,515.00
191474	300 lb (150 kg)	18 x 24 x 5.25 in	90 lb	\$3,515.00
191475	500 lb (250 kg)	18 x 24 x 5.25 in	90 lb	\$3,515.00
191476	1,000 lb (500 kg)	18 x 24 x 5.25 in	90 lb	\$3,515.00
191479	100 lb (50 kg)	24 x 24 x 5.25 in	122 lb	\$3,780.00
191480	150 lb (75 kg)	24 x 24 x 5.25 in	122 lb	\$3,780.00
191481	200 lb (100 kg)	24 x 24 x 5.25 in	122 lb	\$3,780.00
191482	250 lb (125 kg)	24 x 24 x 5.25 in	122 lb	\$3,780.00
191483	300 lb (150 kg)	24 x 24 x 5.25 in	122 lb	\$3,780.00
191485	500 lb (250 kg)	24 x 24 x 5.25 in	122 lb	\$3,780.00
191486	1,000 lb (500 kg)	24 x 24 x 5.25 in	122 lb	\$3,780.00

Options/Accessories


Part #	Description	Catalog Page #
Consult	Scale columns	See page 195
Consult	Ball transfer and roller conveyor scale tops	See page 194
Consult	Mobile scale carts	See page 190 to page 193

BenchMark® LP

Low-profile Bench Scale

BENCH SCALES



 Ideal for aviation weighing. A complete system can be sold with the Tracer® AV2. Reference Aviation section for specifications.

Standard Features

- Mild steel base construction
- 304 stainless steel cover
- ABS junction box
- Four planar beam load cells
- Adjustable leveling feet
- 20 ft of EL147 load cell cable
- Holes in lower frame for mounting scale without adjustable leveling feet

Specifications

Load Cell:

IP65
Aluminum

Output:

1.0 mV/V ± 10%

End Load Capacity:

60% of full scale capacity

Cable Length:

20 ft (6.1 m) for connecting junction box to indicator

Scale Frame:

Mild steel powder coated black

Scale Cover:

AISI304L, straight line finish, Ra=45 ± 10

Warranty:

Two-year limited

Approvals:

NTEP 08-017, Class III 5,000 d
(except 1,000 lb capacity)
Measurement Canada AM 5660
(except 500 kg capacity)

Approvals



Measurement
Canada
Approved

Part Number/Price

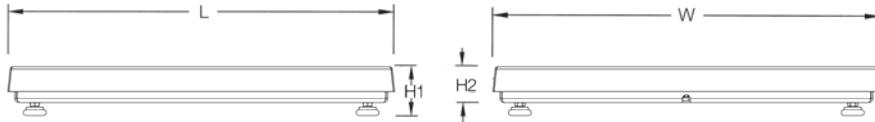
Part #	Capacity	Platform Dimensions L × W × H1 (H2)	Est. Weight	Price
97662	100 lb (50 kg)	18 × 18 × 2.63 in (1.67 in*)	75 lb	\$1,455.00
97663	250 lb (125 kg)	18 × 18 × 2.50 in (1.74 in*)	85 lb	\$1,485.00
97664	500 lb (250 kg)	18 × 18 × 2.69 in (1.93 in*)	85 lb	\$1,525.00
97665	100 lb (50 kg)	24 × 24 × 2.66 in (1.69 in*)	85 lb	\$1,740.00
97666	250 lb (125 kg)	24 × 24 × 2.83 in (2.07 in*)	100 lb	\$1,765.00
97667	500 lb (250 kg)	24 × 24 × 3.02 in (2.26 in*)	100 lb	\$1,800.00
97668	500 lb (250 kg)	30 × 30 × 3.02 in (2.26 in*)	150 lb	\$2,075.00
97669**	1,000 lb (500 kg)	30 × 30 × 3.47 in (2.70 in*)	190 lb	\$2,145.00
97670	500 lb (250 kg)	36 × 36 × 3.02 in (2.26 in*)	175 lb	\$2,720.00
97671**	1,000 lb (500 kg)	36 × 36 × 3.47 in (2.70 in*)	175 lb	\$2,785.00

*Height without adjustable leveling feet

** Non-NTEP or Measurement Canada Approved

Options/Accessories

Part #	Description	Price
208904	20 ft cable with DB-9 connector for connecting to Tracer AV2	\$95.00



Dimensions

BenchMark LP			
PN 97662			
H1	2.63 in	L	18.00 in
H2	1.67 in	W	18.00 in
PN 97663			
H1	2.50 in	L	18.00 in
H2	1.74 in	W	18.00 in
PN 97664			
H1	2.69 in	L	18.00 in
H2	1.93 in	W	18.00 in
PN 97665			
H1	2.66 in	L	24.00 in
H2	1.69 in	W	24.00 in

Note: 1 in = 25.4 mm

PN 97666			
H1	2.83 in	L	24.00 in
H2	2.07 in	W	24.00 in
PN 97667			
H1	3.02 in	L	24.00 in
H2	2.26 in	W	24.00 in
PN 97668			
H1	3.02 in	L	30.00 in
H2	2.26 in	W	30.00 in
PN 97669			
H1	3.47 in	L	30.00 in
H2	2.70 in	W	30.00 in

Note: 1 in = 25.4 mm

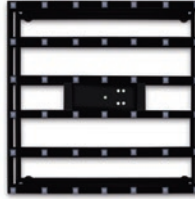
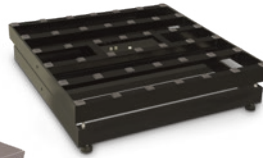
PN 97670			
H1	3.02 in	L	36.00 in
H2	2.26 in	W	36.00 in
PN 97671			
H1	3.47 in	L	36.00 in
H2	2.70 in	W	36.00 in

Note: 1 in = 25.4 mm

BenchMark® HD

Heavy-duty Bench Scale

BENCH SCALES



Standard Features

- Heavy-duty designed mild steel base construction with 304 stainless steel cover
- Polyurethane rubber leveling feet with stainless steel stems

Specifications

Load Cell:

IP67, environmentally sealed
Aluminum

Output Impedance:

350 ohm

Maximum Overload:

200%

Overload Protection:

Five-point, independently adjusted

Scale Frame:

Mild steel powder coated black

Scale Cover:

AISI304L, straight line finish, Ra=45 ± 10

Cable Length:

10 ft (3 m)

Temperature:

Compensated:
14 °F to 104 °F (-10 °C to 40 °C)

Warranty:

Two-year limited

Approvals:

NTEP 06-010, Class III 5,000 d
Measurement Canada AM-5625
Load cell is cFMus approved

Approvals



Measurement
Canada
Approved



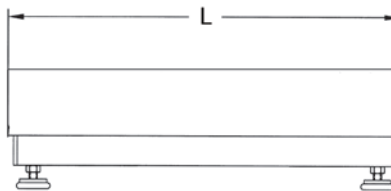
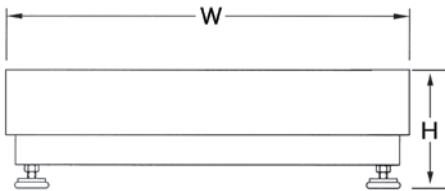
Part Number/Price

Part #	Capacity	Platform Dimensions (L × W × H)	Est. Weight	Price
93414	250 lb (125 kg)	30 × 30 × 8.75 in	300 lb	\$2,230.00
93415	500 lb (225 kg)	30 × 30 × 8.75 in	300 lb	\$2,230.00
93416	250 lb (125 kg)	36 × 36 × 8.75 in	330 lb	\$2,700.00
93417	500 lb (225 kg)	36 × 36 × 8.75 in	330 lb	\$2,700.00

Dimensions

BenchMark HD			
30 × 30 in			
H	8.75 in	W	30.00 in
L	30.00 in		
36 × 36 in			
H	8.75 in	W	36.00 in
L	36.00 in		

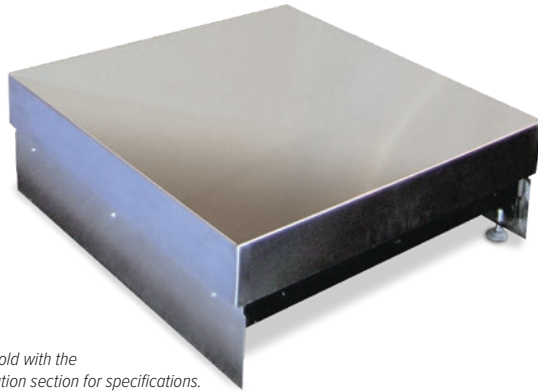
Note: 1 in = 25.4 mm



BenchMark® HD-1

Aviation Scale

BENCH SCALES



*Ideal for aviation weighing.
A complete system can be sold with the
Tracer® AV2. Reference Aviation section for specifications.*

Approvals



Part Number/Price

Part #	Capacity	Platform Dimensions	Price
Consult	500 lb (225 kg)	W × D × 12 in	Consult

Note: Maximum size is up to 36 in × 36 in, height is always 12 in W × D supplied by customer

Standard Features

- Heavy-duty scale designed mild steel base construction with 304 stainless steel cover
- Polyurethane rubber leveling feet with stainless steel stems
- Load cell comes standard with DB-9 connector for connecting to Tracer AV2
- Front and back kick plates

Specifications

Load Cell:

IP67, environmentally sealed
Aluminum

Output Impedance:

350 ohm

Maximum Overload:

200%

Overload Protection:

Five-point, independently adjusted

Cable Length:

10 ft (3 m)

Temperature:

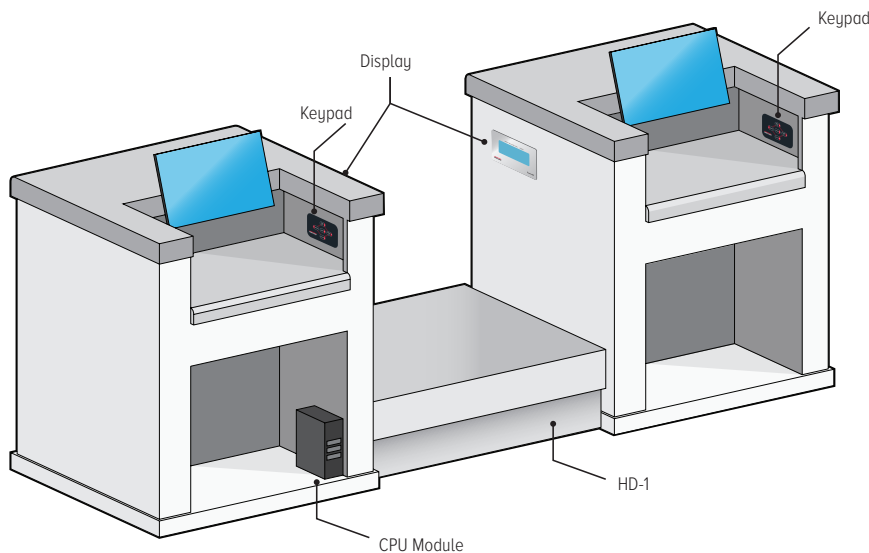
Compensated:
14 °F to 104 °F (-10 °C to 40 °C)

Warranty:

Two-year limited

Approvals:

NTEP 06-010, Class III 5,000 d
Measurement Canada AM-5625
Load cell is cFMus approved

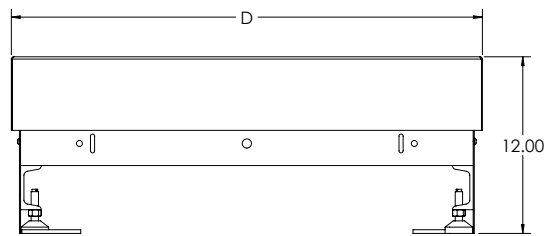
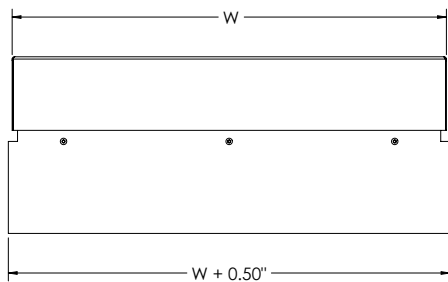
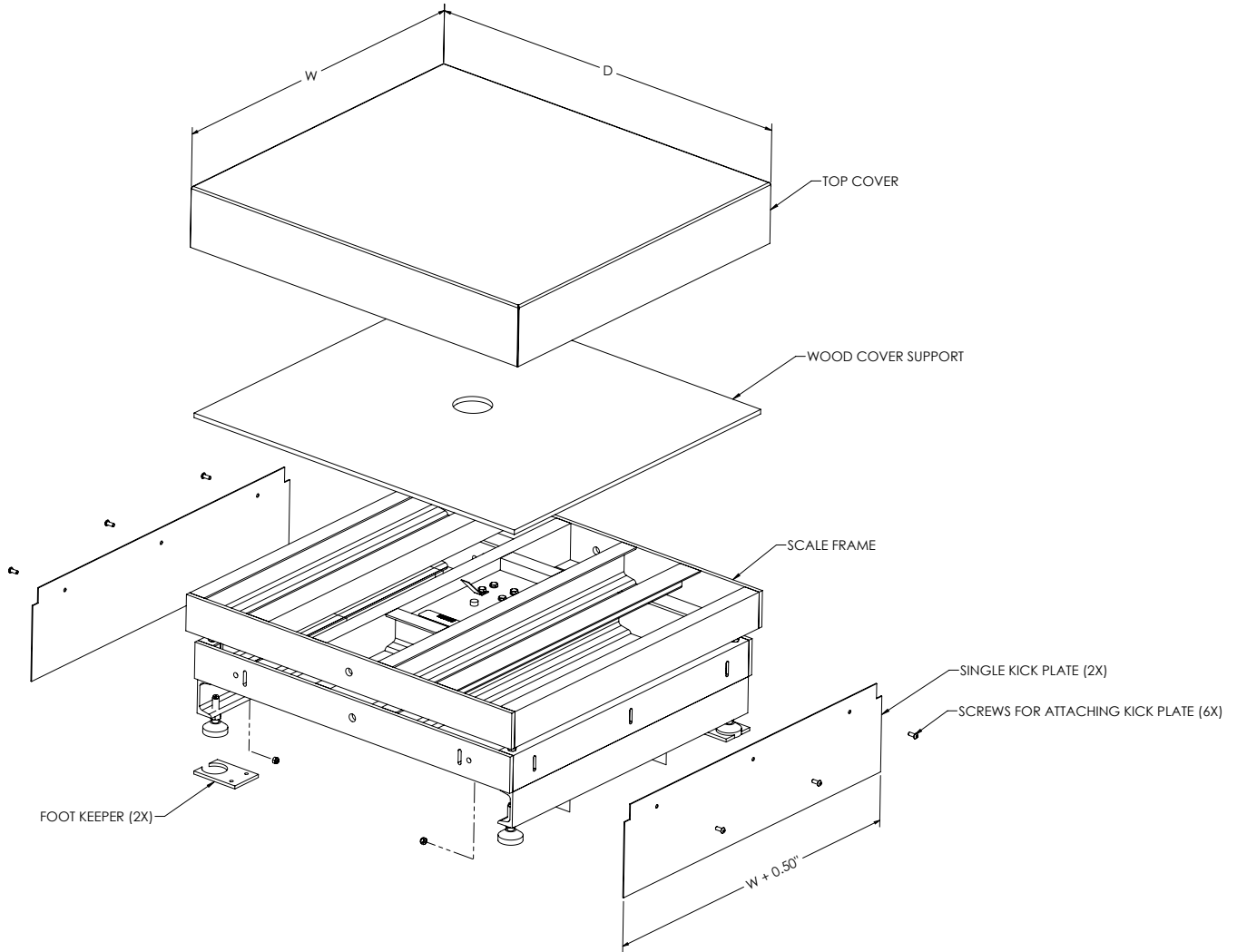


Baggage weighing system with Benchmark HD-1 and Tracer AV2 dual LCD panel mount display, dual keypad

BenchMark® HD-1

Aviation Scale

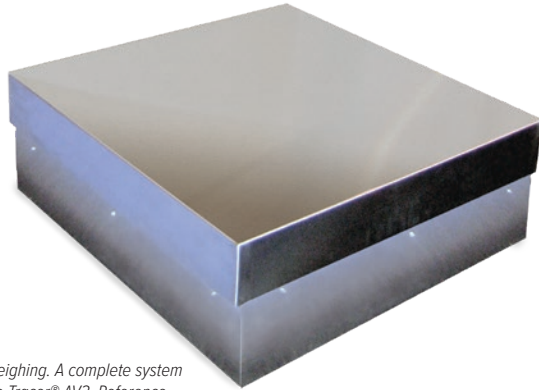
BENCH SCALES



BenchMark® HD-2

Aviation Scale

BENCH SCALES



✈ Ideal for aviation weighing. A complete system can be sold with the Tracer® AV2. Reference Aviation section for specifications.

Approvals



Measurement
Canada
Approved



Part Number/Price

Part #	Capacity	Platform Dimensions	Price
Consult	500 lb (225 kg)	W × D × 12 in	Consult

Note: Maximum size is up to 36 in × 36 in, height is always 12 in W × D supplied by customer.

Standard Features

- Heavy-duty scale designed mild steel base construction with 304 stainless steel cover
- Polyurethane rubber leveling feet with stainless steel stems
- Load cell comes standard with DB-9 connector for connecting to Tracer AV2
- Three-sided kick plate

Specifications

Load Cell:

IP67, environmentally sealed
Aluminum

Output Impedance:

350 ohm

Maximum Overload:

200%

Overload Protection:

Five-point, independently adjusted

Cable Length:

10 ft (3 m)

Temperature:

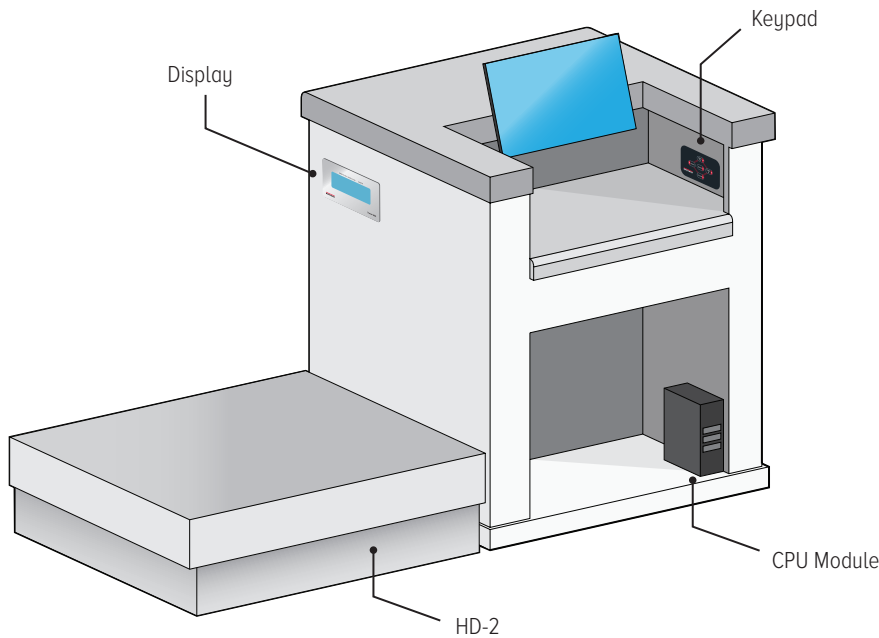
Compensated:
14 °F to 104 °F (-10 °C to 40 °C)

Warranty:

Two-year limited

Approvals:

NTEP 06-010, Class III 5,000 d
Measurement Canada AM-5625
Load cell is cFMus approved

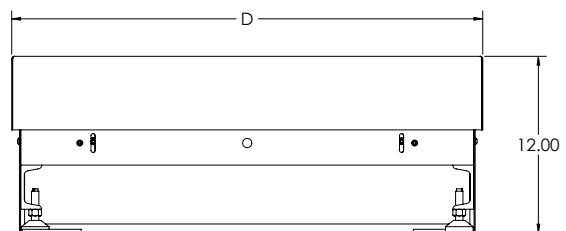
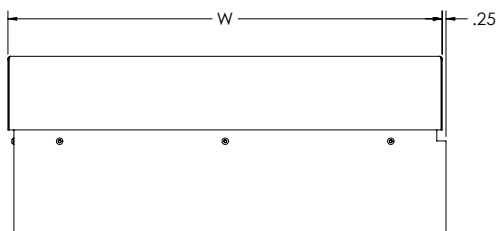
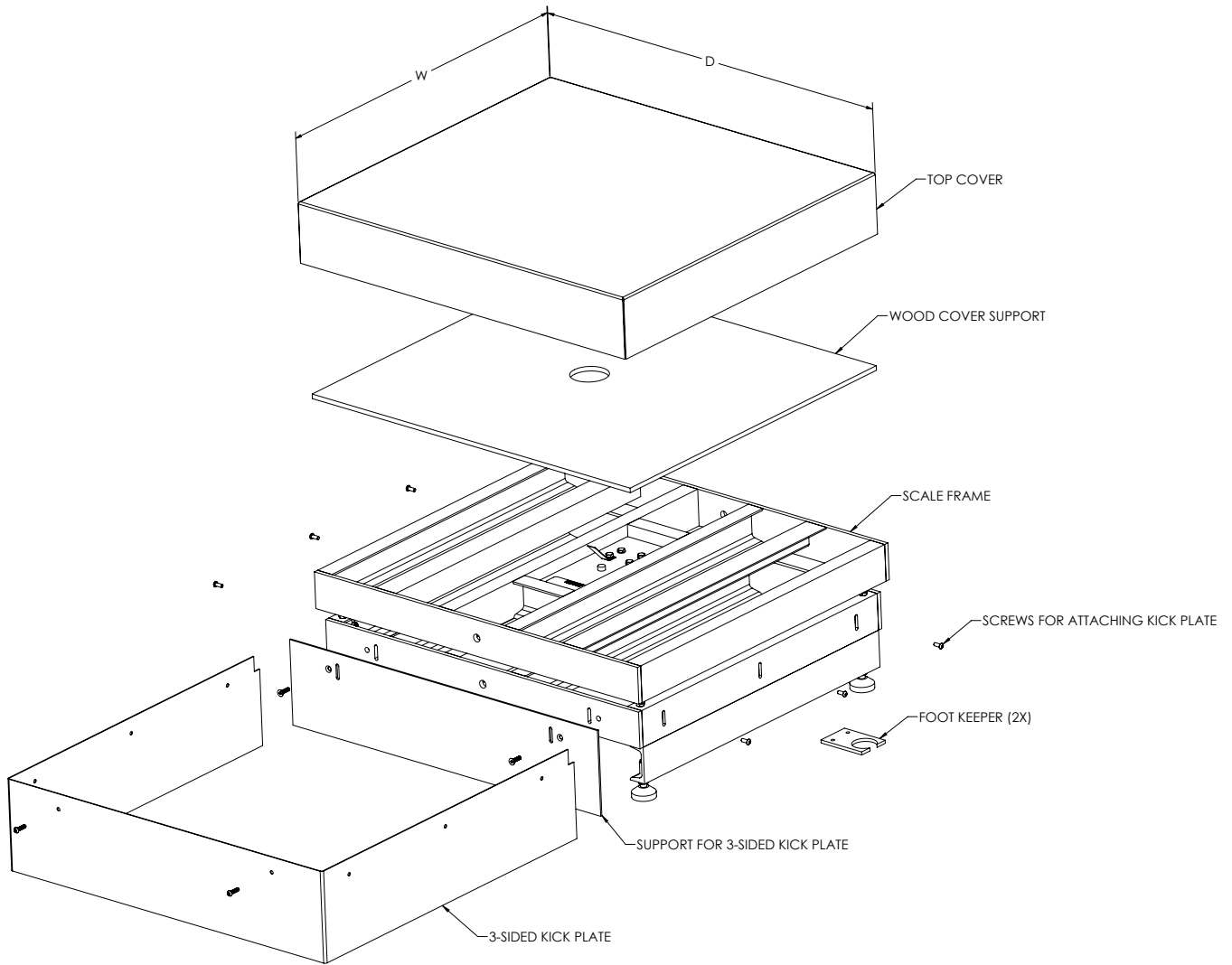


Baggage weighing system with Benchmark HD-2 and Tracer AV2 single LCD panel mount display, single keypad

BenchMark® HD-2

Aviation Scale

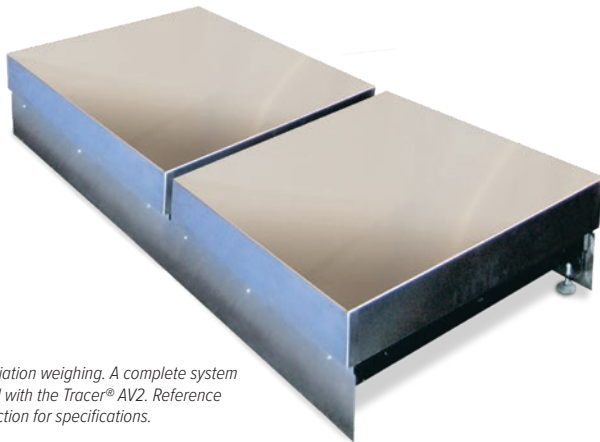
BENCH SCALES



BenchMark® HD-3

Aviation Scale

BENCH SCALES



Ideal for aviation weighing. A complete system can be sold with the Tracer® AV2. Reference Aviation section for specifications.

Approvals



Measurement
Canada
Approved



Part Number/Price

Part #	Capacity	Platform Dimensions	Price
Consult	500 lb (225 kg)	W × D × 12 in	Consult

Note: Maximum size is up to 36 in × 36 in, height is always 12 in W × D supplied by customer.

Standard Features

- Two heavy-duty scales designed mild steel base construction with 304 stainless steel cover
- Polyurethane rubber leveling feet with stainless steel stems
- Load cell comes standard with DB-9 connector for connecting to Tracer AV2
- Front and back kick plates for two side-by-side scales

Specifications

Load Cell:

IP67, environmentally sealed
Aluminum

Output Impedance:

350 ohm

Maximum Overload:

200%

Overload Protection:

Five-point, independently adjusted

Cable Length:

10 ft (3 m)

Temperature:

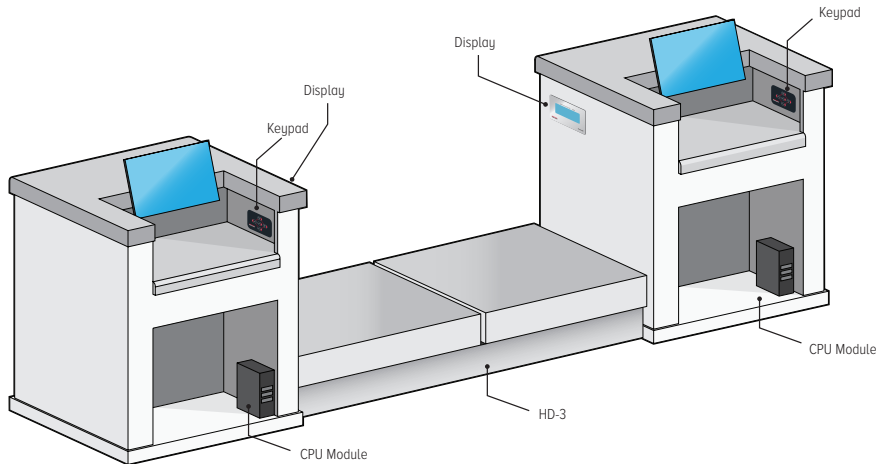
Compensated:
14 °F to 104 °F (-10 °C to 40 °C)

Warranty:

Two-year limited

Approvals:

NTEP 06-010, Class III 5,000 d
Measurement Canada AM-5625
Load cell is cFMus approved

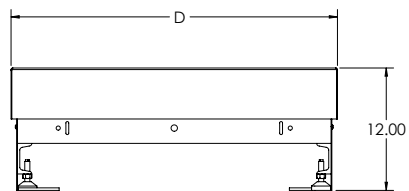
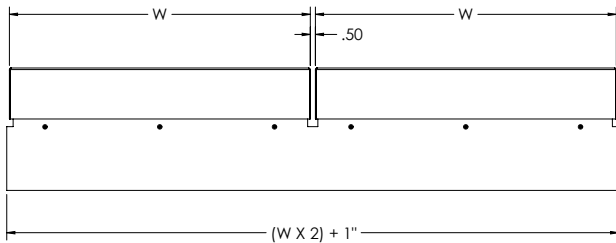
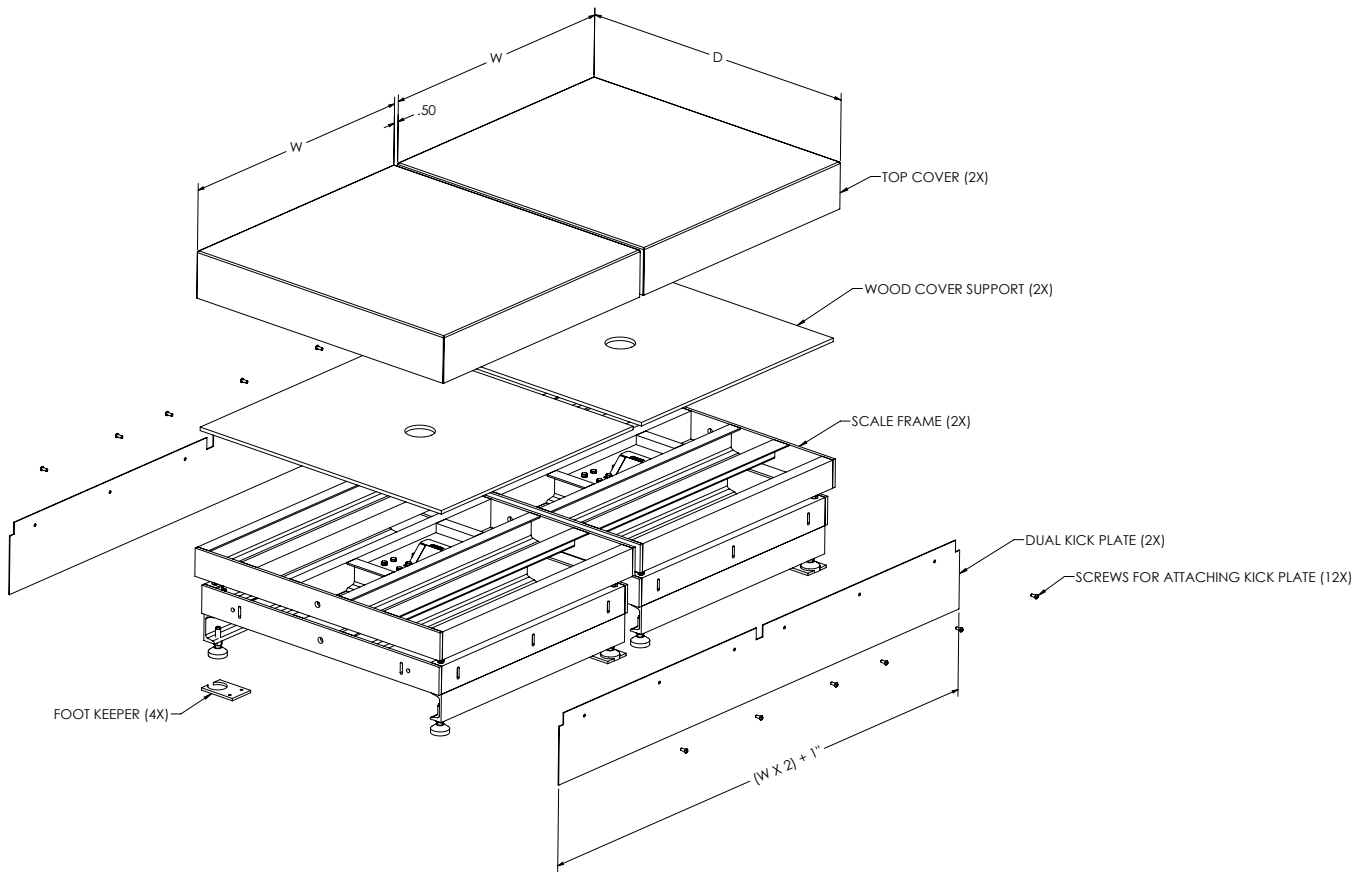


Baggage weighing system with BenchMark HD-3 and Tracer AV2 single LCD panel mount display, single keypad

BenchMark® HD-3

Aviation Scale

BENCH SCALES



BenchMark® HDP

Heavy-duty Portable Scale

BENCH SCALES



Standard Features

- Mild steel base construction
- 304 stainless steel cover
- Indicator stand for mounting 380 Synergy

Wheel model

- Polyurethane rubber leveling feet with stainless steel stems
- 8-inch diameter preformed rubber wheels with ball bearings

Caster model

- 3 1/2 in diameter preformed rubber casters, two fixed, two swivel with lock

Specifications

Load Cell:

IP67, environmentally sealed
Aluminum

Output Impedance:

350 ohm

Maximum Overload:

200%

Overload Protection:

Five-point, independently adjusted

Scale Frame:

Mild steel powder-coated black

Scale Cover:

AISI304L, straight line finish, Ra=45 ± 10

Cable Length:

10 ft (3 m)

Temperature:

Compensated:
14 °F to 104 °F (-10 °C to 40 °C)

Warranty:

Two-year limited

Approvals:

NTEP 06-010, Class III 5,000 d
Measurement Canada AM-5625

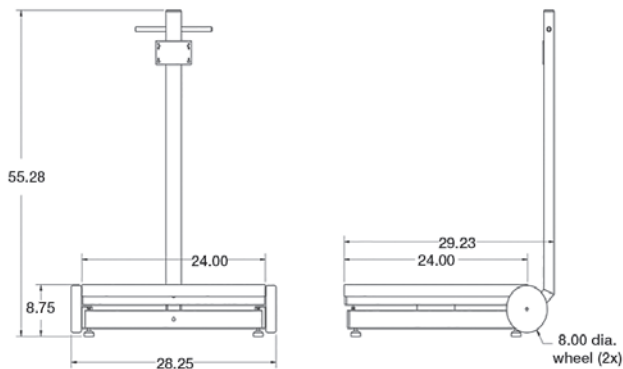
Approvals



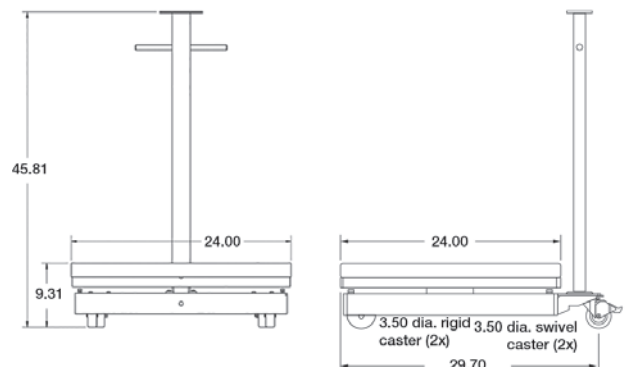
Measurement
Canada
Approved

Part Number/Price

Part #	Capacity	Platform Dimensions	Est. Weight	Price
Wheel Model				
97072	250 lb (125 kg)	24 × 24 × 8.75 in	275 lb	\$2,695.00
97073	500 lb (225 kg)	24 × 24 × 8.75 in	275 lb	\$2,695.00
Caster Model				
97074	250 lb (125 kg)	24 × 24 × 9.31 in	290 lb	\$2,695.00
97075	500 lb (225 kg)	24 × 24 × 9.31 in	290 lb	\$2,695.00



Wheel Model



Caster Model



Approvals



Measurement
Canada
Approved

Part Number/Price

Part #	Description	Capacity	Est. Weight	Price
115125	RPL-6S	6.00 × 0.002 lb	15 lb (6.3 kg)	\$500.00
115128	RPL-15S	15.00 × 0.005 lb	15 lb (6.3 kg)	\$500.00
115129	RPL-30S	30.00 × 0.01 lb	15 lb (6.3 kg)	\$500.00
115130	RPL-60S	60.00 × 0.02 lb	15 lb (6.3 kg)	\$500.00

Options/Accessories

Part #	Description	Price
108516	Rechargeable battery	\$50.00
108518	AC adapter 110-230 VAC, U.S. plug	\$50.00
129953	AC adapter, 110-230 VAC, Euro plug	\$55.00
115519	Additional operator guide	\$10.00

Standard Features

- Compact and easy to use
- IP68 water and dust resistant
- Stainless steel finish
- Removable weigh pan for quick and easy cleaning
- LED display
- AC adapter included
- Legal for Trade
- HACCP compliant

Options

- Rechargeable battery

Specifications

Display:

LED, six-digit

Capacity:

	Pound	Gram	Ounce
RPL-6S	6.0 × 0.002 lb	3,000 × 1 g	60.0 × 0.02 oz
RPL-15S	15.0 × 0.005 lb	6,000 × 2 g	150.0 × 0.05 oz
RPL-30S	30.0 × 0.01 lb	15,000 × 5 g	300.0 × 0.1 oz
RPL-60S	60.0 × 0.02 lb	30,000 × 10 g	600.0 × 0.2 oz

Annunciators:

Ounces, grams, pounds, net, center of zero, battery usage

Keyboard:

Rezero, tare, on/off, unit

Resolution:

Internal: 90,000 count

Display: 3,000

Humidity:

15 to 85% RH

Temperature:

Operating: 14 °F to 104 °F (-10 °C to 40 °C)

Power Consumption:

18 W when using DC power, 3 W when using rechargeable battery

Power Source:

AC 117/100 V, 240/230/220 V

DC 12 V/1.5 A, DC 6 V 5 Ah optional rechargeable battery

Optional Battery:

60 hours of continuous usage

Calibration:

RPL-S: Grams

Overall Dimensions:

(L × W × H)

11.4 × 9.9 × 5.3 in

(290 × 252 × 135 mm)

Package Size:

(L × W × H)

14.8 × 13.3 × 9.6 in

(377 × 337 × 245 mm)

Platter Size:

9.3 × 7.8 in

(237 × 198.0 mm)

Warranty:

One-year limited

Approvals:

NTEP 10-068, Class III 3,000 d

Measurement Canada AM-5794

BenchPro™ BP-P

Digital Postal Scale

BENCH SCALES



Standard Features

- Simple operation, easy to set up
- Large six-digit backlight LCD display with 1-inch (29 mm) characters protected by heavy-duty tempered glass
- Powered USB HID point of sale interface, kg model only
- Nine-pin RS-232 interface for use with SMA and NCI protocols
- Four AA alkaline battery operation for portability
- Gravitational compensation allows for adjustment of factory calibration to meet your local gravity setting, non-approved

Specifications

- Power:**
In-line power supply (included)
- Input:**
100 to 240 VAC, +10% -15%, 3-wire w/ground
Terminated with standard USA 3-prong plug
- Output:**
12 V at 0.1 Amps DC minimum
- Frequency:**
50/60 Hz ± 3 Hz
- Power Supply Approvals:**
UL, CE, EN, CUL
- Battery Type:**
Four AA alkaline batteries, 6 V,
with low battery indication at 4.3 volts
- Battery Life:**
50 to 250 hrs depending on backlight and
auto-shutdown settings

Approvals



Part Number/Price

Part #	Platform Capacity	Dimensions	Est. Weight	Price
187832	35 kg triple range	12 × 14 in	18 lb	\$775.00
195741	35 kg triple interval	12 × 14 in	18 lb	\$775.00
192361	70 lb dual range	12 × 14 in	18 lb	\$775.00
195742	70 lb dual interval	12 × 14 in	18 lb	\$775.00

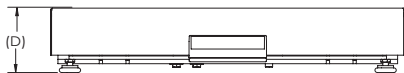
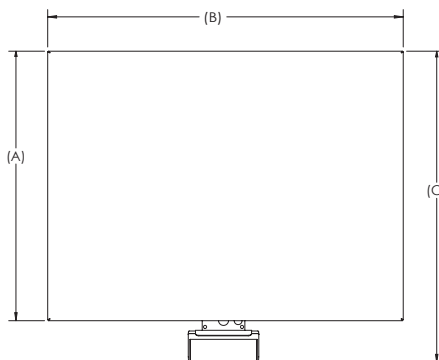
Options/Accessories

Part #	Description	Est. Weight	Price
174783	Column bracket and post (12 × 14 scale only)	2 lb	\$50.00
180901	Second customer display, BenchPro BP-P no keyboard with 68 in cable	4 lb	\$72.00
174784	Second remote operator display, BenchPro BP-P with 68 in cable	4 lb	\$88.00
183103	16 in (H) tabletop display post for use with second display, customer or remote operator	4 lb	\$215.00
178501	USB RS-232 serial adapter 3.28 ft cable	1 lb	\$60.00

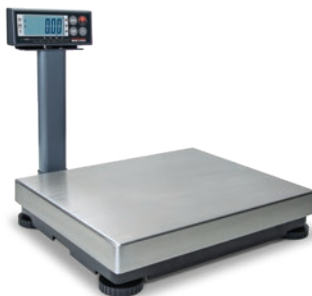
Dimensions

BenchPro BP-P			
A	12.00 in	C	14.50 in
B	14.00 in	D	2.70 in

Note: 1 in = 25.4 mm



BP-P shown with 183103 and 180901



Shown with 174783

- Excitation:**
3.0 mV/V
- Resolution:**
Internal: 500,000 counts
- USB HID:**
USB 2.0 full speed; Vendor ID: 1C19;
Product ID: 0002
- Divisions (Multi-range):**
kg triple range:
0 to 5 kg × 0.001 kg
0 to 10 kg × 0.002 kg
0 to 35 kg × 0.01 kg
lb/oz dual range:
0 to 7 lb × 0.05 oz
0 to 70 lb × 0.2 oz
- Divisions (Multi-interval):**
kg triple interval:
0 to 5 kg × 0.001 kg
5 to 10 kg × 0.002 kg
10 to 35 kg × 0.01 kg
Lb/oz dual interval:
0 to 7 lb × 0.05 oz
7 to 70 lb × 0.2 oz
- Material:**
Display: ABS plastic housing
Scale base: Die-cast aluminum load bridge and base housing with stainless steel weight platter
- Dynamic Response:**
Response time for stable weight:
0 to 1,000 d, 1,000 ms, maximum mean average
1,000 d +, 1,500 ms, maximum mean average
- Overload Protection:**
Corner and center overload protection
- Display:**
Large six-digit backlight LCD display with 1-inch (29 mm) characters protected by heavy-duty tempered glass
- Annunciators:**
Six: zero, gross/brutto, net, W1/W2/W3 multi-range
- Keys/Buttons:**
Three: units, on/off, F1
(Tare is not applicable)
Minimum key press life of 500,000 cycles
- RS-232 Cable (Included):**
10 ft DB 9-pin male to female, straight pass-through
- USB Cable (Included):**
46 in (1,168 mm) A/B type USB cable
- Warranty:**
Two-year limited
- Approvals:**
NTEP 17-002
Canada Weights and Measures: AM-6050
CE Marked

BenchPro™ BP-S

Digital Shipping Scale

BENCH SCALES



Approvals



Measurement
Canada
Approved



Part Number/Price

Part #	Platform Capacity	Dimensions	Est. Weight	Price
174879*	150 × 0.05 lb (75 × 0.02 kg)	12 × 14 in	17 lb	\$775.00
182993	150 × 0.05 lb (75 × 0.02 kg)	12 × 16 in	31 lb	\$1,285.00
182391	100 × 0.02 lb (50 × 0.01 kg)	18 × 18 in	63 lb	\$1,740.00
182378	150 × 0.05 lb (75 × 0.02 kg)	18 × 18 in	63 lb	\$1,740.00
182382	300 × 0.1 lb (150 × 0.05 kg)	18 × 18 in	63 lb	\$1,740.00
182395	300 × 0.1 lb (150 × 0.05 kg)	20 × 20 in	76 lb	\$1,950.00
182399	300 × 0.1 lb (150 × 0.05 kg)	24 × 24 in	131 lb	\$2,150.00

* Battery or DC power

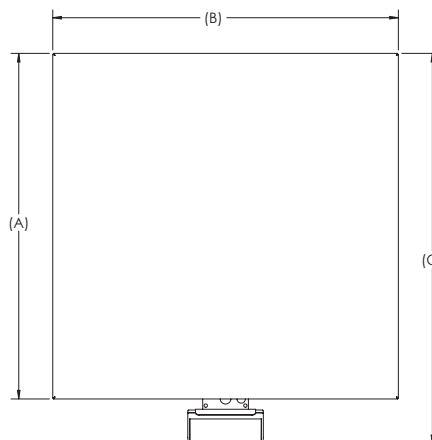
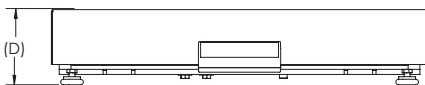
Options/Accessories

Part #	Description	Est. Weight	Price
174783	Column bracket and post (12 × 14 scale only)	2 lb	\$50.00
180901	Second customer display, BenchPro BP-S no keyboard with 68 in cable	4 lb	\$72.00
174784	Second remote operator display, BenchPro BP-S with 68 in cable	4 lb	\$88.00
183103	16 in (H) tabletop display post for use with second display, customer or remote operator	4 lb	\$215.00
178501	USB RS-232 serial adapter	1 lb	\$60.00

Dimensions

	A	B	C	D
12 × 14 in	12.00 in	14.00 in	14.50 in	2.70 in
12 × 16 in	12.00 in	16.00 in	15.30 in	4.32 in
18 × 18 in	18.00 in	18.00 in	21.10 in	4.30 in
20 × 20 in	20.00 in	20.00 in	23.10 in	4.30 in
24 × 24 in	24.00 in	24.00 in	27.10 in	4.30 in

Note: 1 in = 25.4 mm



Standard Features

- Simple operation, easy to set up
- Large six-digit backlight LCD display with 1-inch (29 mm) characters protected by heavy-duty tempered glass
- Powered USB HID point of sale interface
- Nine-pin RS-232 interface for use with SMA and NCI protocols
- Four AA alkaline battery operation for portability
- Gravitational compensation allows for adjustment of factory calibration to meet your local gravity setting, non-approved
- Compatible with FedEx Ship Manager® and UPS Worldship®

Specifications

Power:

In-line power supply (included)

Input:

100 to 240 VAC, +10% -15%, 3-wire w/ground
Terminated with standard USA 3-prong plug

Battery:

(12 × 14 in scale only)
Four AA alkaline batteries,
6 V, with low battery indication at 4.3 volts

Power Consumption:

12 V at 0.1 amps DC minimum

Frequency:

50/60 Hz ± 3 Hz

Battery Life:

50 to 250 hrs depending on backlight and auto-shutdown settings

Excitation:

3.0 mV/V

Resolution:

Internal: 500,000 counts

USB HID:

USB 2.0 full speed; Vendor ID: 1C19;
Product ID: 0002

RS-232 Cable (Included):

10 ft DB 9-pin male to female, straight pass-through

USB Cable (Included):

46 in (1,168 mm) A/B type USB cable

Dynamic Response:

Response time for stable weight:
0 to 1,000 d, 1,000 ms, maximum mean average
1,000 d ±, 1,500 ms, maximum mean average

Overload Protection:

Corner and center overload protection

Annunciators:

Six: zero, gross/brutto, net, W1/W2/W3 multi-range

Display:

Large six-digit backlight LCD display with 1-inch (25.4 mm) characters protected by heavy-duty tempered glass

Keys/Buttons:

Four: units, tare, on/off, F1
Minimum key press life of 500,000 cycles

Material:

Display: ABS plastic housing
Scale base: Powder coat painted mild steel base plate and load bridge with stainless steel weight platter
BP-S 12 × 14 in: Die-cast aluminum load bridge and base housing with stainless steel weight platter

Warranty:

Two-year limited

Approvals:

NTEP 17-002
Canada Weights and Measures: AM-6050
CE Marked

BenchPro™ BP-SB

Ball Top Digital Shipping Scale

BENCH SCALES



Approvals



Part Number/Price

Part #	Capacity	Dimensions	Est. Weight	Price
182995	150 × 0.05 lb (75 × 0.02 kg)	12 × 16 in	37 lb	\$1,545.00
182393	100 × 0.02 lb (50 × 0.01 kg)	18 × 18 in	73 lb	\$2,140.00
182380	150 × 0.05 lb (75 × 0.02 kg)	18 × 18 in	73 lb	\$2,140.00
182384	300 × 0.1 lb (150 × 0.05 kg)	18 × 18 in	73 lb	\$2,140.00
182397	300 × 0.1 lb (150 × 0.05 kg)	20 × 20 in	88 lb	\$2,375.00
182401	300 × 0.1 lb (150 × 0.05 kg)	24 × 24 in	131 lb	\$2,615.00

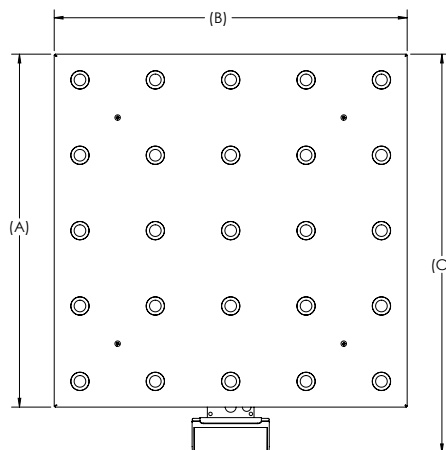
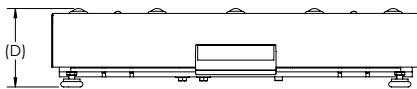
Options/Accessories

Part #	Description	Est. Weight	Price
180901	Second customer display, BenchPro BP-SB no keyboard with 68 in cable	4 lb	\$72.00
174784	Second remote operator display, BenchPro BP-SB with 68 in cable	4 lb	\$88.00
183103	16 in (H) tabletop display post for use with second display, customer or remote operator	4 lb	\$215.00
178501	USB RS-232 serial adapter	1 lb	\$60.00

Dimensions

	A	B	C	D
12 × 16 in	12.00 in	16.00 in	15.30 in	4.32 in
18 × 18 in	18.00 in	18.00 in	21.10 in	4.86 in
20 × 20 in	20.00 in	20.00 in	23.10 in	4.86 in
24 × 24 in	24.00 in	24.00 in	27.10 in	4.86 in

Note: 1 in = 25.4 mm



Standard Features

- Simple operation, easy to set up
- Large six-digit backlight LCD display with 1-inch (29 mm) characters protected by heavy-duty tempered glass
- Powered USB HID point of sale interface
- Nine-pin RS-232 interface for use with SMA and NCI protocols
- Gravitational compensation allows for adjustment of factory calibration to meet your local gravity setting, non-approved
- Compatible with FedEx Ship Manager® and UPS Worldship®

Specifications

Power:

In-line power supply (included)

Input:

100 to 240 VAC, +10% -15%, 3-wire w/ground
Terminated with standard USA 3-prong plug

Output:

12 V at 0.1 amps DC minimum

Frequency:

50/60 Hz ±3 Hz

Approvals:

UL, CE, EN, CUL

Excitation:

3.0 mV/V

Resolution:

Internal: 500,000 counts

USB HID:

USB 2.0 full speed; Vendor ID: 1C19;
Product ID: 0002

RS-232 Cable (Included):

10 ft DB 9-pin male to female, straight pass-through

USB Cable (Included):

46 in (1,168 mm) A/B type USB cable

Dynamic Response:

Response time for stable weight:
0 to 1,000 d, 1,000 ms, maximum mean average
1,000 d +, 1,500 ms, maximum mean average

Overload Protection:

Corner and center overload protection

Annunciators:

Six: zero, gross/brutto, net, W1/W2/W3 multi-range

Display:

Large six-digit backlight LCD display with 1-inch (25.4 mm) characters protected by heavy-duty tempered glass

Keys/Buttons:

Four: units, tare, on/off, F1
Minimum key press life of 500,000 cycles

Material:

Display: A BS plastic housing
Scale base: Powder coat painted mild steel base plate and load bridge. Carbon steel ball with carbon steel zinc-plated housing. Stainless steel shroud.

Warranty:

Two-year limited

Approvals:

NTEP 17-002
Canada Weights and Measures: AM - 6050
CE Marked

BenchPro™ BP-SR

Roller Top Digital Shipping Scale

BENCH SCALES



Approvals



Measurement
Canada
Approved



Part Number/Price

Part #	Platform Capacity	Dimensions	Est. Weight	Price
182996	150 × 0.05 lb (75 × 0.02 kg)	12 × 16 in	41 lb	\$1,460.00
182394	100 × 0.02 lb (50 × 0.01 kg)	18 × 18 in	77 lb	\$1,925.00
182381	150 × 0.05 lb (75 × 0.02 kg)	18 × 18 in	77 lb	\$1,925.00
182386	300 × 0.1 lb (150 × 0.05 kg)	18 × 18 in	77 lb	\$1,925.00
182398	300 × 0.1 lb (150 × 0.05 kg)	20 × 20 in	94 lb	\$2,065.00
182402	300 × 0.1 lb (150 × 0.05 kg)	24 × 24 in	131 lb	\$2,265.00

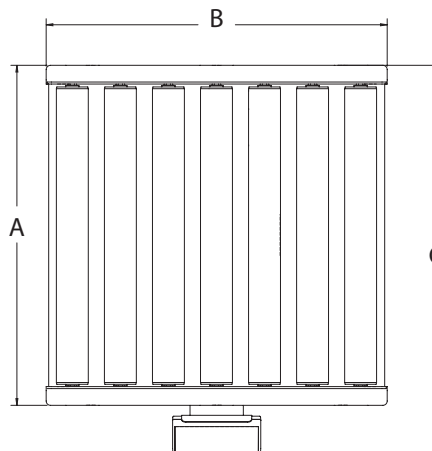
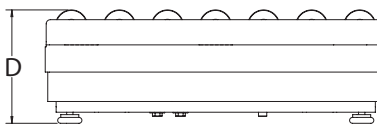
Options/Accessories

Part #	Description	Est. Weight	Price
180901	Second customer display, BenchPro BP-SR no keyboard with 68 in cable	4 lb	\$72.00
174784	Second remote operator display, BenchPro BP-SR with 68 in cable	4 lb	\$88.00
183103	16 in (H) tabletop display post for use with second display, customer or remote operator	4 lb	\$215.00
178501	USB RS-232 serial adapter	1 lb	\$60.00

Dimensions

	A	B	C	D
12 × 16 in	12.00 in	16.00 in	15.30 in	5.95 in
18 × 18 in	18.00 in	18.00 in	21.10 in	6.50 in
20 × 20 in	20.00 in	20.00 in	23.10 in	6.50 in
24 × 24 in	24.00 in	24.00 in	27.10 in	6.50 in

Note: 1 in = 25.4 mm



Standard Features

- Simple operation, easy to set up
- Large six-digit backlight LCD display with 1-inch (25.4-mm) characters protected by heavy-duty tempered glass
- Powered USB HID point of sale interface
- Nine-pin RS-232 interface for use with SMA and NCI protocols
- Gravitational compensation allows for adjustment of factory calibration to meet your local gravity setting, non-approved
- Compatible with FedEx Ship Manager® and UPS Worldship®

Specifications

Power:

In-line power supply (included)

Input:

100 to 240 VAC, +10% -15%, 3-wire w/ground
Terminated with standard USA 3-prong plug

Output:

12 V at 0.1 Amps DC minimum

Frequency:

50/60 Hz ± 3 Hz, standard

Approvals:

UL, CE, EN, CUL

Excitation:

3.0 mV/V

Resolution:

Internal: 500,000 counts

USB HID:

USB 2.0 full speed; Vendor ID: 1C19;
Product ID: 0002

RS-232 Cable (Included):

10 ft DB 9-pin male to female, straight pass-through

USB Cable (Included):

46 in (1,168 mm) A/B type USB cable

Dynamic Response:

Response time for stable weight:
0 to 1,000 d, 1,000 ms, maximum mean average
1,000 d +, 1,500 ms, maximum mean average

Overload Protection:

Corner and center overload protection

Annunciators:

Six: zero, gross/brutto, net, W1/W2/W3 multi-range

Display:

Large six-digit backlight LCD display with 1-inch (25.4 mm) characters protected by heavy-duty tempered glass

Keys/Buttons:

Four: units, tare, on/off, F1
Minimum key press life of 500,000 cycles

Material:

Display: ABS plastic housing
Scale base: Powder coat painted mild steel
base plate and load bridge with galvanized
roller conveyor

Warranty:

Two-year limited

Approvals:

NTEP 17-002
Canada Weights and Measures: AM-6050
CE Marked

BenchMark® MSC-10

Mobile Scale Cart

BENCH SCALES



Standard Features

- Two swivel, locking casters and two rigid casters
- Adjustable height with telescoping tube designed legs
- 18-inch indicator stand for mounting
CW-90/90X, 680/682 Synergy, 380/380X Synergy

Specifications

Capacity:
1,000 lb (500 kg) maximum

Warranty:
One-year limited

Part Number/Price

Part #	Description	Cart Dimensions (L × W × H)	Est. Weight	Price
Mild Steel				
190201	Designed for 12 × 18 in Benchmark MS scale	25 × 14 × 41.89 to 51.89 in (22.78 to 32.78 in*)	70 lb	\$1,400.00
190202	Designed for 18 × 18 in Benchmark MS scale	25 × 20 × 41.89 to 51.89 in (22.78 to 32.78 in*)	83 lb	\$1,435.00
190203	Designed for 18 × 24 in Benchmark MS scale	31 × 20 × 41.89 to 51.89 in (22.78 to 32.78 in*)	93 lb	\$1,470.00
190204	Designed for 24 × 24 in Benchmark MS scale	31 × 26 × 41.89 to 51.89 in (22.78 to 32.78 in*)	101 lb	\$1,500.00
Stainless Steel				
190205	Designed for 12 × 18 in Benchmark SS and Benchmark HE scale	25 × 14 × 41.89 to 51.89 in (22.78 to 32.78 in*)	70 lb	\$1,755.00
190206	Designed for 18 × 18 in Benchmark SS and Benchmark HE scale	25 × 20 × 41.89 to 51.89 in (22.78 to 32.78 in*)	83 lb	\$1,805.00
190207	Designed for 18 × 24 in Benchmark SS and Benchmark HE scale	31 × 20 × 41.89 to 51.89 in (22.78 to 32.78 in*)	93 lb	\$1,855.00
190209	Designed for 24 × 24 in Benchmark SS and Benchmark HE scale	31 × 26 × 41.89 to 51.89 in (22.78 to 32.78 in*)	101 lb	\$1,905.00

*Height of cart without indicator stand

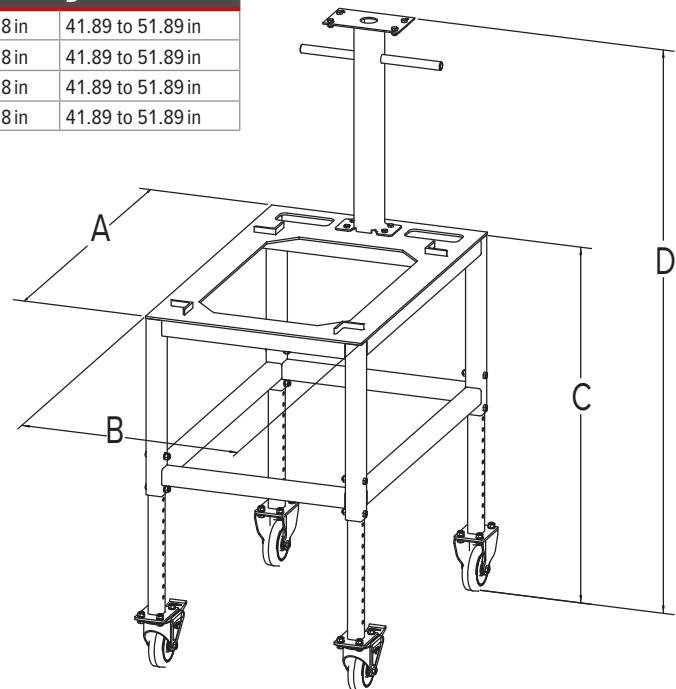
Wheels on standard carts are not conductive. If the end user plans to use the cart with an IS indicator, they will need a custom cart quoted with conductive wheels.

Cart not compatible with HE-X. See MSC-40.

Dimensions

	A	B	C	D
Designed for 12 × 18 in scale	25.00 in	14.00 in	22.78 to 32.78 in	41.89 to 51.89 in
Designed for 18 × 18 in scale	25.00 in	20.00 in	22.78 to 32.78 in	41.89 to 51.89 in
Designed for 18 × 24 in scale	31.00 in	20.00 in	22.78 to 32.78 in	41.89 to 51.89 in
Designed for 24 × 24 in scale	31.00 in	26.00 in	22.78 to 32.78 in	41.89 to 51.89 in

Note: 1 in = 25.4 mm



BenchMark® MSC-20

Mobile Scale Cart

BENCH SCALES



Standard Features

- Two swivel, locking casters and two rigid casters
- Designed to easily transport counting scale and secondary scale

Specifications

Capacity:

Lower base frame: 1,000 lb (500 kg) maximum
Upper base frame: 50 lb (25 kg) maximum

Warranty:

One-year limited

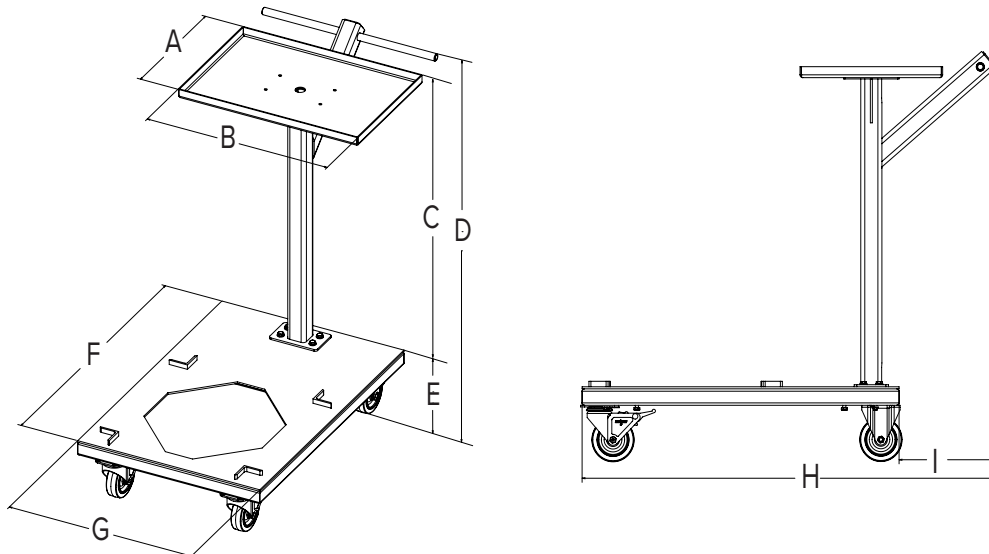
Part Number/Price

Part #	Description	Est. Weight	Price
Mild Steel			
197502	Designed for 12 × 18 in Benchmark MS scale	85 lb	\$1,495.00
197503	Designed for 18 × 18 in Benchmark MS scale	85 lb	\$1,520.00
197504	Designed for 18 × 24 in Benchmark MS scale	88 lb	\$1,545.00
197505	Designed for 24 × 24 in Benchmark MS scale	96 lb	\$1,570.00
Stainless Steel			
197506	Designed for 12 × 18 in Benchmark SS and Benchmark HE scale	90 lb	\$2,125.00
197507	Designed for 18 × 18 in Benchmark SS and Benchmark HE scale	90 lb	\$2,145.00
197508	Designed for 18 × 24 in Benchmark SS and Benchmark HE scale	93 lb	\$2,170.00
197509	Designed for 24 × 24 in Benchmark SS and Benchmark HE scale	101 lb	\$2,200.00

Dimensions

	A	B	C	D	E	F	G	H	I
Designed for 12 × 18 in scale	19.50 in	13.25 in	29.18 in	36.00 in	6.81 in	30.00 in	20.00 in	39.00 in	9.00 in
Designed for 18 × 18 in scale	19.50 in	13.25 in	29.18 in	36.00 in	6.81 in	30.00 in	20.00 in	39.00 in	9.00 in
Designed for 18 × 24 in scale	19.50 in	13.25 in	29.18 in	36.00 in	6.81 in	35.00 in	20.00 in	44.00 in	9.00 in
Designed for 24 × 24 in scale	19.50 in	13.25 in	29.18 in	36.00 in	6.81 in	35.00 in	26.00 in	44.00 in	9.00 in

Note: 1 in = 25.4 mm



BenchMark® MSC-30

Mobile Scale Cart

BENCH SCALES



Standard Features

- Two swivel, locking casters and two rigid casters
- Indicator stand for mounting CW-90/90X, 680/682 Synergy, 380/380X Synergy

Specifications

Capacity:
1,000 lb (500 kg) maximum

Warranty:
One-year limited

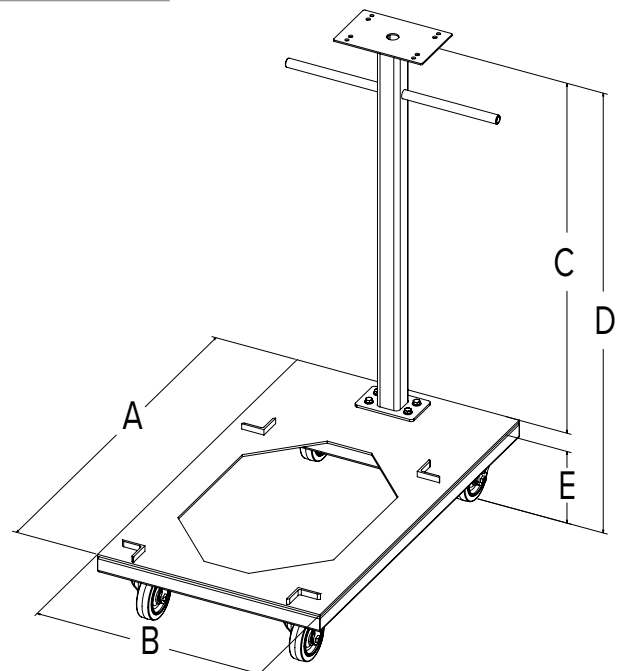
Part Number/Price

Part #	Description	Est. Weight	Price
Mild Steel			
197510	Designed for 12 × 18 Benchmark MS scale	67 lb	\$1,495.00
197511	Designed for 18 × 18 Benchmark MS scale	67 lb	\$1,520.00
197512	Designed for 18 × 24 Benchmark MS scale	70 lb	\$1,545.00
197513	Designed for 24 × 24 Benchmark MS scale	78 lb	\$1,570.00
Stainless Steel			
197514	Designed for 12 × 18 Benchmark SS and Benchmark HE scale	72 lb	\$2,125.00
197515	Designed for 18 × 18 Benchmark SS and Benchmark HE scale	72 lb	\$2,145.00
197516	Designed for 18 × 24 Benchmark SS and Benchmark HE scale	75 lb	\$2,170.00
197517	Designed for 24 × 24 Benchmark SS and Benchmark HE scale	83 lb	\$2,200.00

Dimensions

	A	B	C	D	E
Designed for 12 × 18 scale	30.00 in	20.00 in	34.25 in	41.00 in	6.81 in
Designed for 18 × 18 scale	30.00 in	20.00 in	34.25 in	41.00 in	6.81 in
Designed for 18 × 24 scale	35.00 in	20.00 in	34.25 in	41.00 in	6.81 in
Designed for 24 × 24 scale	35.00 in	26.00 in	34.25 in	41.00 in	6.81 in

Note: 1 in = 25.4 mm



BenchMark® MSC-40

Mobile Scale Cart

BENCH SCALES



Standard Features

- Two swivel, locking casters and two rigid casters
- Rugged washdown design meets Sanitary Design Principles

Specifications

Capacity:
1,000 lb (500 kg) maximum

Warranty:
One-year limited

Part Number/Price

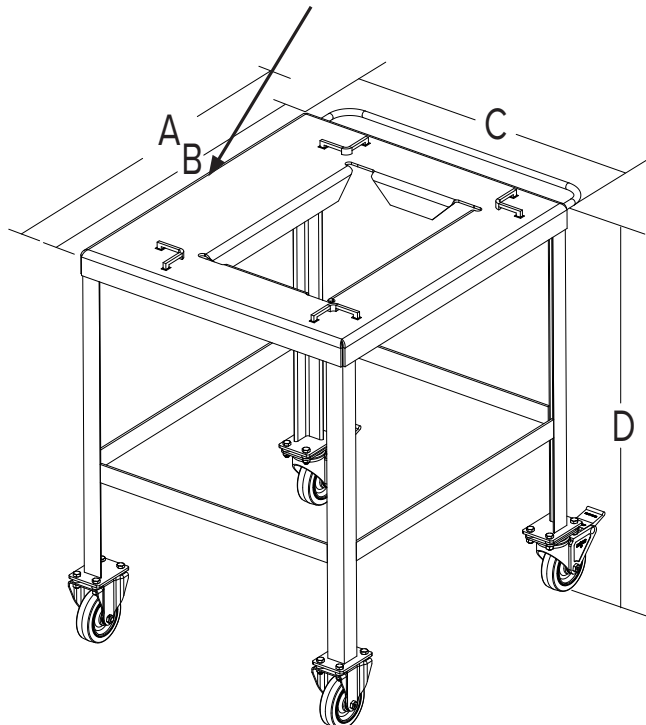
Part #	Description	Est. Weight	Price
Stainless Steel			
197518	Designed for 12 × 18 in Benchmark HE-X scale	62 lb	\$1,975.00
197519	Designed for 18 × 18 in Benchmark HE-X scale	62 lb	\$2,085.00
197520	Designed for 18 × 24 in Benchmark HE-X scale	69 lb	\$2,195.00
197521	Designed for 24 × 24 in Benchmark HE-X scale	79 lb	\$2,305.00

Dimensions

	A	B	C	D
Designed for 12 × 18 in scale	24.75 in	21.00 in	17.88 in	32.00 in
Designed for 18 × 18 in scale	24.75 in	21.00 in	24.00 in	32.00 in
Designed for 18 × 24 in scale	30.75 in	27.00 in	24.00 in	32.00 in
Designed for 24 × 24 in scale	30.75 in	27.00 in	30.00 in	32.00 in

Note: 1 in = 25.4 mm

Note: This side of cart is larger to accommodate BenchMark HE-X with indicator column



Bench Scale Ball Transfer and Roller Conveyor

1. Rice Lake Weighing Systems model number or part number of bench scale _____
2. Dimensions of scale: _____ in L × _____ in W
3. Capacity of scale: _____ lb
4. Dimensions of the smallest box/container to be used with the scale: _____ in L × _____ in W

Ball Transfer

5. Construction of ball transfer
 - Steel ball, steel housing zinc finish
 - Stainless steel ball, steel housing zinc finish
 - Stainless steel ball, stainless steel housing
6. Center-to-center ball dimension, if known:



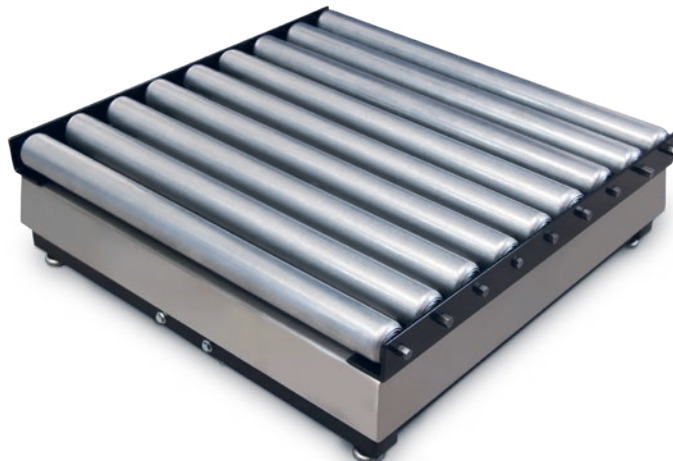
Ball Transfer with Shroud

5. Construction of ball transfer
 - Steel ball, steel housing zinc finish
 - Stainless steel ball, stainless steel housing
6. Center-to-center ball dimension, if known:



Roller Conveyor

8. Roller diameter, if known:
9. Center-to-center dimension, if known:
10. Construction of rollers
 - Plain steel
 - Galvanized steel
 - Aluminum
 - Stainless steel
7. Direction of roller conveyor, if platform is rectangular shaped (i.e., 18 × 24 in scale, please tell us if the rollers should be 18 in or 24 in long)



Bench Scale Columns

Part Number/Price

Part #	Description	Price
112044	12 in column for IQ plus® 210, CW-90, CW-90X, 480/482 Legend Series, 380/380X Synergy Series, 680/682 Synergy Series	\$145.00
112045	18 in column for IQ plus® 210, CW-90, CW-90X, 480/482 Legend Series, 380/380X Synergy Series, 680/682 Synergy Series	\$195.00
196363	12 in column for 882IS/882IS Plus with battery	\$225.00
196364	18 in column for 882IS/882IS Plus with battery	\$275.00
197482	12 in column for 882IS/882IS Plus with power supply (Note: Power supply does not mount to column)	\$165.00
197484	18 in column for 882IS/882IS Plus with power supply (Note: Power supply does not mount to column)	\$215.00
64576	Attachment bracket for IQ plus® 210, CW-90, CW-90X, 480/482 Legend Series, 380/380X Synergy Series, 680/682 Synergy Series	\$100.00
216970	12 in column for 381 Synergy Indicator	\$145.00
216971	18 in column for 381 Synergy Indicator	\$195.00

Available for the BenchMark SL, BenchMark SL/HE, BenchMark Mild Steel, BenchMark Stainless Steel, BenchMark HE, BenchMark HE-X, CW-80B, CW-90B and CW90-XB



CW-90B with 380 indicator and 12 in column



Base with 882IS/882IS Plus indicator with battery and 12 in column



Attachment bracket with 680 Indicator



Base with 381 Synergy indicator and 12 in column

