

Bench Scales

TABLE OF CONTENTS

BenchMark® SL	166	Ishida iPC Series	197
<i>Light-capacity Bench Scale</i>		<i>Portable Bench Scale</i>	
BenchMark® CW-80B	167	Versa-portion®	198
<i>Light-capacity Bench Scale</i>		<i>Compact Scale</i>	
BenchMark® SL/HE	168	BenchPro™ BP-P	199
<i>Spring Loaded/Hostile Environment Bench Scale</i>		<i>Postal Bench Scale</i>	
CW-90B	169	BenchPro™ BP-S	200
<i>Light-capacity Bench Scale</i>		<i>Shipping Bench Scale</i>	
CW-90XB	170	BenchPro™ BP-SB	201
<i>Light-capacity Bench Scale</i>		<i>Shipping Bench Scale with Ball Top Shroud</i>	
Ready-n-Weigh Bench Scale System	171	BenchPro™ BP-SR	202
<i>CW-90B Bench Scale and 380 Indicator Package</i>		<i>Shipping Bench Scale with Roller Conveyor</i>	
Ready-n-Weigh Bench Scale System	172	BenchMark® MSC-10	203
<i>CW-90B Bench Scale and 480/480 Plus Indicator Package</i>		<i>Mobile Scale Cart</i>	
Ready-n-Weigh Bench Scale System	174	BenchMark® MSC-20	204
<i>CW-90B Bench Scale and 482/482 Plus Indicator Package</i>		<i>Mobile Scale Cart</i>	
Ready-n-Weigh Bench Scale System	176	BenchMark® MSC-30	205
<i>CW-90B Bench Scale and 680 Indicator Package</i>		<i>Mobile Scale Cart</i>	
Ready-n-Weigh Bench Scale System	177	BenchMark® MSC-40	206
<i>CW-90XB Bench Scale and 380 Indicator Package</i>		<i>Mobile Scale Cart</i>	
Ready-n-Weigh Bench Scale System	178	Bench Scale Ball Transfer	
<i>CW-90XB Bench Scale and 480/480 Plus Indicator Package</i>		and Roller Conveyor	207
Ready-n-Weigh Bench Scale System	180	Bench Scale Columns	208
<i>CW-90XB Bench Scale and 482/482 Plus Indicator Package</i>			
Ready-n-Weigh Bench Scale System	182		
<i>CW-90XB Bench Scale and 680 Indicator Package</i>			
BenchMark® MS	183		
<i>Mild Steel Bench Scale</i>			
BenchMark® SS	184		
<i>Stainless Steel Bench Scale</i>			
BenchMark® HE	185		
<i>Hostile Environment Bench Scale</i>			
BenchMark® HE-X	186		
<i>Hostile Environment Extreme Bench Scale</i>			
BenchMark® LP	188		
<i>Low-Profile Bench Scale</i>			
BenchMark® HD	189		
<i>Heavy-Duty Bench Scale</i>			
BenchMark® HD-1 Aviation	190		
<i>Heavy Duty Bench Scale</i>			
BenchMark® HD-2 Aviation	192		
<i>Heavy Duty Bench Scale</i>			
BenchMark® HD-3 Aviation	194		
<i>Heavy Duty Bench Scale</i>			
BenchMark® HDP	196		
<i>Portable Heavy-Duty Bench Scale</i>			

Product names, logos, brands and other trademarks featured or referred to within this publication are the property of their respective trademark holders.

BenchMark® SL

Light-capacity Bench Scale

BENCH SCALES



Standard Features

- NTEP Certified IP66 aluminum load cell
- 304 stainless steel construction
- LifeGuard™ base design isolates load cell from overloads and shock loads for added durability
- Specially designed adjustable support feet provide exceptional traction and won't scratch surfaces

Specifications

Load Cell, NTEP Certified:

IP66 aluminum and environmentally sealed

Output Impedance:

350 ohm

Maximum Overload:

200%

Overload Protection:

Shock-absorbing spider

Scale Frame:

AISI304L, straight line finish, Ra=45 ± 10

Scale Cover:

AISI304L, straight line finish, Ra=45 ± 10

Cable Length:

10 ft (3 m)

Temperature:

Compensated:

14 °F to 104 °F (-10 °C to 40 °C)

Warranty:

Two-year limited

Approvals:

NTEP 95-072, Class III 5,000 d

Measurement Canada AM-5082

Load cell is cFMus approved

Approvals



Measurement
Canada
Approved



Part Number/Price

Part #	Platform Capacity	Dimensions (L × W × H)	Est. Weight	Price
18575*	2 lb (1 kg)	10 × 10 × 3.15 in	13 lb	\$745.00
18576	5 lb (2.5 kg)	10 × 10 × 3.15 in	13 lb	\$745.00
18577	10 lb (5 kg)	10 × 10 × 3.15 in	13 lb	\$745.00
18578	20 lb (10 kg)	10 × 10 × 3.15 in	13 lb	\$745.00
18579	30 lb (15 kg)	10 × 10 × 3.15 in	13 lb	\$745.00
32914	30 lb (15 kg)	12 × 12 × 3.25 in	14 lb	\$840.00
32913	50 lb (25 kg)	12 × 12 × 3.25 in	14 lb	\$840.00
35198	100 lb (50 kg)	12 × 12 × 3.25 in	14 lb	\$840.00

Options/Accessories

Part #	Description	Catalog Page #
Consult	Scale columns	See page 208
Consult	Ball transfer and roller conveyor scale tops	See page 207
Consult	Mobile scale carts	See page 203 to page 206

*Non-NTEP Certified or Measurement Canada approved

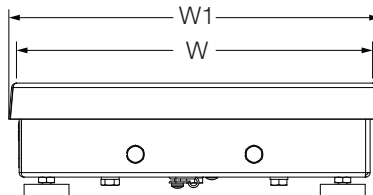
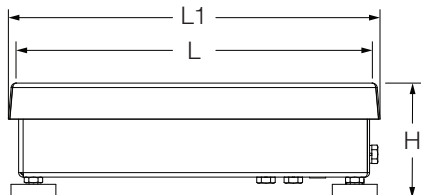
Dimensions

BenchMark SL			
10 × 10 in			
H	3.15 in	W	10.00 in
L	10.00 in	W1	10.25 in
L1	10.25 in		

Note: 1 in = 25.4 mm

12 × 12 in			
H	3.25 in	W	12.00 in
L	12.00 in	W1	12.25 in
L1	12.25 in		

Note: 1 in = 25.4 mm



BenchMark® CW-80B

Light-capacity Bench Scale

BENCH SCALES



Standard Features

- NTEP Certified, IP67 stainless steel load cell
- 304 stainless steel construction
- LifeGuard™ base design isolates load cell from overloads and shock loads for added durability
- Specially designed adjustable support feet provide exceptional traction and won't scratch surfaces

Specifications

Load Cell, NTEP Certified:

IP67 stainless steel and environmentally sealed

Output Impedance:

350 ohm

Maximum Overload:

200%

Overload Protection:

Shock-absorbing spider

Scale Frame:

AISI304L, straight line finish, Ra=45 ± 10

Scale Cover:

AISI304L, straight line finish, Ra=45 ± 10

Cable Length:

10 ft (3 m)

Temperature:

Compensated:

14 °F to 104 °F (-10 °C to 40 °C)

Warranty:

Two-year limited

Approvals:

NTEP 96-107, Class III, 3000 d

Measurement Canada AM-5156

Load cell is FM approved

Approvals



Measurement
Canada
Approved



Part Number/Price

Part #	Platform Capacity	Dimensions (L × W × H)	Est. Weight	Price
35075	6 lb (3 kg)	10 × 10 × 3.15 in	13 lb	\$910.00
35076	10 lb (5 kg)	10 × 10 × 3.15 in	13 lb	\$910.00
35077	15 lb (7 kg)	10 × 10 × 3.15 in	13 lb	\$910.00
35078	30 lb (15 kg)	10 × 10 × 3.15 in	13 lb	\$910.00
35079	30 lb (15 kg)	12 × 12 × 3.25 in	14 lb	\$1,005.00
35080	60 lb (30 kg)	12 × 12 × 3.25 in	14 lb	\$1,005.00

Options/Accessories

Part #	Description	Catalog Page #
Consult	Scale columns	See page 208
Consult	Ball transfer and roller conveyor scale tops	See page 207
Consult	Mobile scale carts	See page 203 to page 206

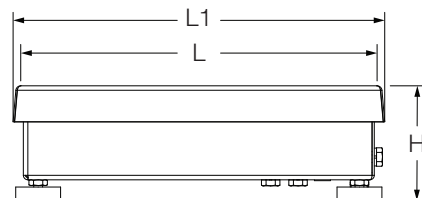
Dimensions

CW-80B

10 × 10 in

H	3.15 in	W	10.00 in
L	10.00 in	W1	10.25 in
L1	10.25 in		

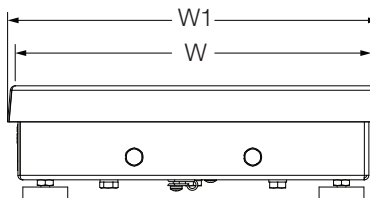
Note: 1 in = 25.4 mm



12 × 12 in

H	3.25 in	W	12.00 in
L	12.00 in	W1	12.25 in
L1	12.25 in		

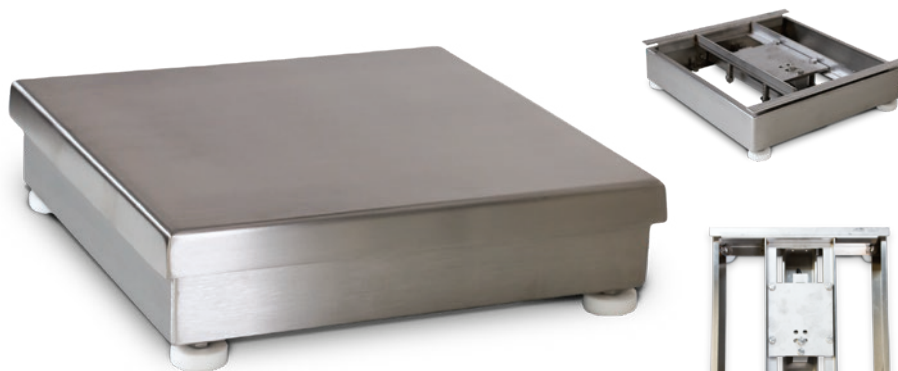
Note: 1 in = 25.4 mm



BenchMark® SL/HE

Spring Loaded/Hostile Environment Bench Scale

BENCH SCALES



Standard Features

- NTEP Certified, IP69K stainless steel, hermetically sealed load cell
- 304 stainless steel construction
- LifeGuard™ base design isolates load cell from overloads and shock loads for added durability
- Specially designed adjustable support feet provide exceptional traction and won't scratch surfaces

Specifications

Load Cell, NTEP Certified:

IP69K stainless steel, hermetically sealed

Output Impedance:

350 ohm

Maximum Overload:

200%, except 150% for 30 lb

Overload Protection:

Shock-absorbing spider

Scale Frame:

AISI304L, straight line finish, Ra=45 ± 10

Scale Cover:

AISI304L, straight line finish, Ra=45 ± 10

Cable Length:

10 ft (3 m)

Temperature:

Compensated:
14 °F to 104 °F (-10 °C to 40 °C)

Warranty:

Three-year limited
(includes water ingress)

Approvals:

NTEP 95-072, Class III 5,000 d
Measurement Canada AM-5082
Load cell is FM approved

Approvals



Measurement
Canada
Approved



APPROVED

Part Number/Price

Part #	Platform Capacity	Dimensions (L × W × H)	Est. Weight	Price
86942	5 lb (2.5 kg)	10 × 10 × 3.15 in	13 lb	\$1,355.00
86943	10 lb (5 kg)	10 × 10 × 3.15 in	13 lb	\$1,355.00
86944	20 lb (10 kg)	10 × 10 × 3.15 in	13 lb	\$1,355.00
86945	30 lb (15 kg)	10 × 10 × 3.15 in	13 lb	\$1,355.00
86946	30 lb (15 kg)	12 × 12 × 3.25 in	13 lb	\$1,450.00
86947	50 lb (25 kg)	12 × 12 × 3.25 in	14 lb	\$1,450.00
86948	100 lb (50 kg)	12 × 12 × 3.25 in	14 lb	\$1,450.00

Options/Accessories

Part #	Description	Catalog Page #
Consult	Scale columns	See page 208
Consult	Ball transfer and roller conveyor scale tops	See page 207
Consult	Mobile scale carts	See page 203 to page 206

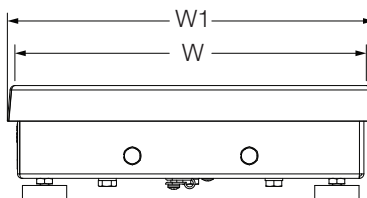
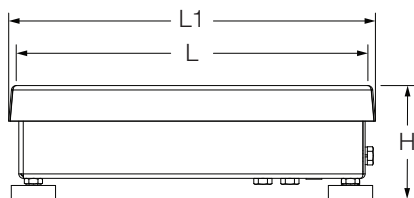
Dimensions

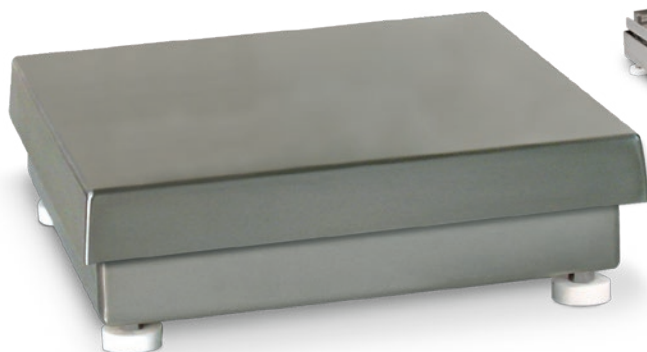
BenchMark SL/HE			
10 × 10 in			
H	3.15 in	W	10.00 in
L	10.00 in	W1	10.25 in
L1	10.25 in		

Note: 1 in = 25.4 mm

12 × 12 in			
H	3.25 in	W	12.00 in
L	12.00 in	W1	12.25 in
L1	12.25 in		

Note: 1 in = 25.4 mm





Standard Features

- IP67 aluminum environmentally sealed load cell
- 304 stainless steel construction
- Meets HACCP requirements
- Five-point overload protection
- Specially designed adjustable support feet provide exceptional traction and will not scratch surfaces

Specifications

Load Cell, NTEP Certified:

IP67 aluminum, environmentally sealed

Output Impedance:

350 ohm

Maximum Overload:

180% to 200% depending on capacity

Overload Protection:

Five-point, independently adjusted

Scale Frame:

AISI304L, straight line finish, Ra=45 ± 10

Scale Cover:

AISI304L, straight line finish, Ra=45 ± 10

Cable Length:

34 in or 10 ft

Temperature:

Compensated:

14 °F to 104 °F (-10 °C to 40 °C)

Warranty:

Two-year limited

Approvals:

NTEP 95-072, Class III 5,000 d

Measurement Canada AM-5082

NSF

Load cell is cFmus Approved

Approvals



Measurement
Canada
Approved



Part Number/Price

Part #		Platform Capacity	Dimensions (L × W × H)	Est. Weight	Price
10 ft cable	34 in cable				
112599	106137	5 lb (2.5 kg)	10 × 10 × 4.25 in	14 lb	\$695.00
112601	106138	10 lb (5 kg)	10 × 10 × 4.25 in	14 lb	\$695.00
112603	106139	25 lb (10 kg)	10 × 10 × 4.25 in	14 lb	\$695.00
112605	106140	25 lb (10 kg)	12 × 12 × 4.25 in	17 lb	\$790.00
112607	106141	50 lb (25 kg)	12 × 12 × 4.25 in	17 lb	\$790.00
112609	106142	100 lb (50 kg)	12 × 12 × 4.25 in	17 lb	\$790.00

Options/Accessories

Part #	Description	Catalog Page #
Consult	Scale columns	See page 208
Consult	Ball transfer and roller conveyor scale tops	See page 207
Consult	Mobile scale carts	See page 203 to page 206

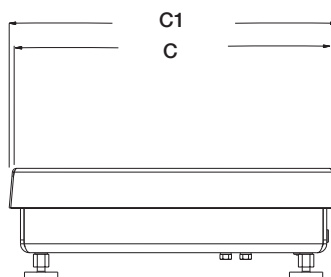
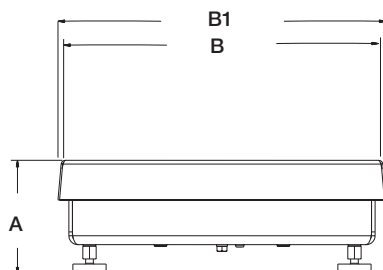
Dimensions

CW-90B			
10 × 10 in			
A	4.25 in	C	10.00 in
B	10.00 in	C1	10.25 in
B1	10.25 in		

Note: 1 in = 25.4 mm

12 × 12 in			
A	4.25 in	C	12.00 in
B	12.00 in	C1	12.25 in
B1	12.25 in		

Note: 1 in = 25.4 mm



CW-90XB

Light-capacity Bench Scale

BENCH SCALES



Standard Features

- IP69K, stainless steel hermetically sealed load cell
- 304 stainless steel construction
- Meets HACCP requirements
- Five-point overload protection
- Specially designed adjustable support feet provide exceptional traction and will not scratch surfaces

Specifications

Load Cell, NTEP Certified:

IP69K stainless steel and hermetically sealed

Output Impedance:

350 ohm

Maximum Overload:

180% to 200% depending on capacity

Overload Protection:

Five-point, independently adjusted

Scale Frame:

AISI304L, straight line finish, Ra=45 ± 10

Scale Cover:

AISI304L, straight line finish, Ra=45 ± 10

Cable Length:

34 in or 10 ft

Temperature:

Compensated:
14 °F to 104 °F (-10 °C to 40 °C)

Warranty:

Three-year limited
(includes water ingress)

Approvals:

NTEP 95-072, Class III 5,000 d
Measurement Canada AM-5082
NSF
Load cell is FM Approved

Approvals



Measurement
Canada
Approved



Part Number/Price

Part #		Platform Capacity	Dimensions (L × W × H)	Est. Weight	Price
10 ft Cable	34 in Cable				
112600	106143	5 lb (2.5 kg)	10 × 10 × 4.25 in	14 lb	\$1,285.00
112602	106144	10 lb (5 kg)	10 × 10 × 4.25 in	14 lb	\$1,285.00
112604	106145	25 lb (10 kg)	10 × 10 × 4.25 in	14 lb	\$1,285.00
112606	106146	25 lb (10 kg)	12 × 12 × 4.25 in	17 lb	\$1,380.00
112608	106147	50 lb (25 kg)	12 × 12 × 4.25 in	17 lb	\$1,380.00
112610	106148	100 lb (50 kg)	12 × 12 × 4.25 in	17 lb	\$1,380.00

Options/Accessories

Part #	Description	Catalog Page #
Consult	Scale columns	See page 208
Consult	Ball transfer and roller conveyor scale tops	See page 207
Consult	Mobile scale carts	See page 203 to page 206

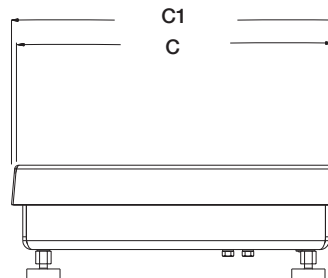
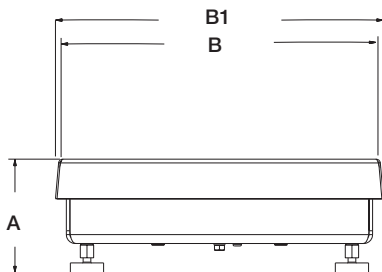
Dimensions

CW-90XB			
10 × 10 in			
A	4.25 in	C	10.00 in
B	10.00 in	C1	10.25 in
B1	10.25 in		

Note: 1 in = 25.4 mm

12 × 12 in			
A	4.25 in	C	12.00 in
B	12.00 in	C1	12.25 in
B1	12.25 in		

Note: 1 in = 25.4 mm



Ready-n-Weigh Bench Scale System

CW-90B Bench Scale and 380 Indicator Package

BENCH SCALES



Approvals



Measurement
Canada
Approved



CW-90B with 380 Package

Part #	Capacity	Dimensions (L x W x H)	Est. Weight	Price
208528	5 lb (2.5 kg)	10 x 10 x 4.25 in	24 lb	\$1,545.00
208529	10 lb (5 kg)	10 x 10 x 4.25 in	24 lb	\$1,545.00
208530	25 lb (10 kg)	10 x 10 x 4.25 in	24 lb	\$1,545.00
208531	25 lb (10 kg)	12 x 12 x 4.25 in	27 lb	\$1,640.00
208532	50 lb (25 kg)	12 x 12 x 4.25 in	27 lb	\$1,640.00
208533	100 lb (50 kg)	12 x 12 x 4.25 in	27 lb	\$1,640.00

Options/Accessories

Part #	Description	Price
206433†	External AC adapter	\$60.00
204258	Real-time clock module	\$127.00

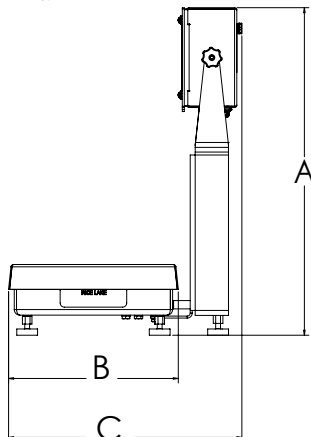


† US plug (NA) - Type A

Dimensions

CW-90B Bench Scale and 380 Indicator 10 x 10 in			
A	19.56 in	E	9.43 in
B	10.20 in	F	4.25 in
C	14.02 in	G	10.20 in
D	13.36 in		

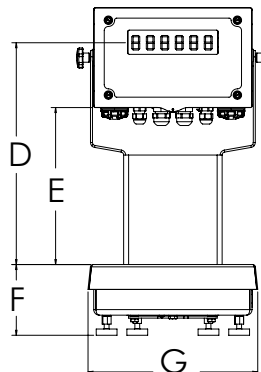
Note: 1 in = 25.4 mm



CW-90B with 380 indicator

12 x 12 in			
A	19.56 in	E	9.30 in
B	12.38 in	F	4.25 in
C	16.10 in	G	12.35 in
D	13.23 in		

Note: 1 in = 25.4 mm



Standard Features

- Package includes scale with IP67 aluminum environmentally sealed load cell with an indicator and 12-inch column
- Factory calibrated with indicator setup and configured for 5,000 divisions
- Scale includes rubber feet to provide exceptional traction and avoid scratching surfaces along with removable top cover for ease of cleaning
- Standard RS-232 serial port for connecting to a variety of peripherals
- Powered by four alkaline C-cell batteries (not included) or external AC adapter (not included)

CW-90B Specifications

Load Cell, NTEP Certified:

IP67 aluminum, environmentally sealed

Scale Construction:

304 stainless steel

Maximum Overload:

180% to 200% depending on capacity

Overload Protection:

Five-point, independently adjusted

Scale Frame:

AISI304L, straight line finish, Ra=45 ± 10

Scale Cover:

AISI304L, straight line finish, Ra=45 ± 10

Cable Length:

34 in

Temperature:

Compensated:

14 °F to 104 °F (-10 °C to 40 °C)

Approvals:

NTEP 21-051, Class III 5,000 d

Measurement Canada AM-6184

NSF

Load cell is cFmus Approved

Warranty:

Two-year limited

380 Specifications

Power:

Batteries: Four alkaline C-cell

Optional: 115/230 VAC to 12 VAC adapter

Battery Life:

45 hours, one 350 ohm load cell, no backlight

15 hours, four 350 ohm load cells, no backlight

10 hours, eight 350 ohm load cells, backlight

Communication Ports:

One full-duplex RS-232 (three-wire)

One USB 2.0

Display:

Six 1 in (25 mm) tall, LCD digits

Annunciators:

g, lb, t, tn, kg, oz, battery level, PT, LT, gross, zero, unstable, net

Keys/Buttons:

Five- tactile buttons

Rating/Material:

IP69K, 304 Stainless steel

Approvals:

NTEP 21-051

Measurement Canada AM-6184

CE

cULus

Warranty:

One-year limited on battery

Two-year limited on indicator and parts

Ready-n-Weigh Bench Scale System

CW-90B Bench Scale and 480/480 Plus Indicator Package

BENCH SCALES



Scale and Indicator Package



Approvals



Measurement
Canada
Approved



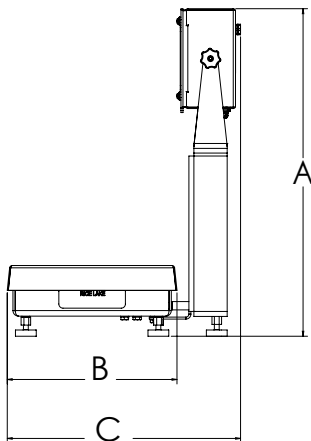
Dimensions

CW-90B Bench Scale and 480/480 Plus Indicator

10 × 10 in

A	19.50 in	E	9.25 in
B	10.25 in	F	4.25 in
C	14.53 in	G	10.25 in
D	13.25 in		

Note: 1 in = 25.4 mm

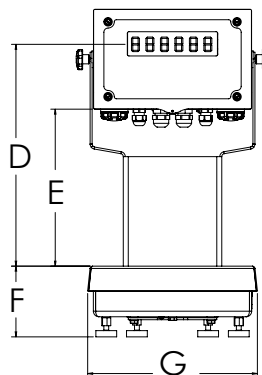


CW-90B with 480 indicator

12 × 12 in

A	19.50 in	E	9.25 in
B	12.25 in	F	4.25 in
C	16.53 in	G	12.25 in
D	13.25 in		

Note: 1 in = 25.4 mm



Standard Features

- Package includes scale with IP67 aluminum environmentally sealed load cell with an indicator and 12-inch column
- Factory calibrated with indicator setup and configured for 5,000 divisions
- Scale includes rubber feet to provide exceptional traction and avoid scratching surfaces along with removable top cover for ease of cleaning
- AC power 100 to 240 VAC
- Numeric keypad (480 Plus)
- Battery backed time and date
- Standard RS-232 serial ports for connecting to a variety of peripherals

CW-90B Specifications

Load Cell, NTEP Certified:

IP67 aluminum, environmentally sealed

Scale Construction:

304 stainless steel

Maximum Overload:

180% to 200% depending on capacity

Overload Protection:

Five-point, independently adjusted

Scale Frame:

AISI304L, straight line finish, Ra=45 ± 10

Scale Cover:

AISI304L, straight line finish, Ra=45 ± 10

Cable Length:

34 in

Temperature:

Compensated:

14 °F to 104 °F (-10 °C to 40 °C)

Approvals:

NTEP 12-123, Class III 5,000 d

Measurement Canada AM-5892C

CE

cULus

Warranty:

Two-year limited

480/480 Plus Specifications

Communication Ports:

Com 1: RS-232 full duplex

Com 2: RS-232 full duplex or 20 mA simplex, continuous

Both ports 1200, 2400, 4800, 9600, 19200, 38400 baud seven or eight data bits, even, odd or no parity

Display:

LED display 0.8 in (20 mm), six-digit, seven-segment

Status Annunciators:

Gross, net, center of zero, standstill, lb, kg, tare, preset tare

Keys/Buttons:

Flat membrane panel, embossed keys, tactile feel

Rating/Material:

Enclosure: NEMA Type 4X/IP66, heavy-gauge stainless steel

Approvals:

NTEP 12-123

Measurement Canada AM-5892C

CE Marked

UL/cUL Listed

Warranty:

Two-year limited

Ready-n-Weigh Bench Scale System

CW-90B Bench Scale and 480/480 Plus Indicator Package

BENCH SCALES

CW-90B with 480 Package

Part #	Platform Capacity	Dimensions (L × W × H)	Est. Weight	Price
115 VAC, LED, US Plug-Type B				
201157	5 lb (2.5 kg)	10 × 10 × 4.25 in	24 lb	\$1,915.00
201158	10 lb (5 kg)	10 × 10 × 4.25 in	24 lb	\$1,915.00
201159	25 lb (10 kg)	10 × 10 × 4.25 in	24 lb	\$1,915.00
201160	25 lb (10 kg)	12 × 12 × 4.25 in	27 lb	\$2,010.00
201161	50 lb (25 kg)	12 × 12 × 4.25 in	27 lb	\$2,010.00
201162	100 lb (50 kg)	12 × 12 × 4.25 in	27 lb	\$2,010.00
90-264 VAC, LED, Euro Plug-Type E				
201169	5 lb (2.5 kg)	10 × 10 × 4.25 in	24 lb	\$1,915.00
201170	10 lb (5 kg)	10 × 10 × 4.25 in	24 lb	\$1,915.00
201171	25 lb (10 kg)	10 × 10 × 4.25 in	24 lb	\$1,915.00
201172	25 lb (10 kg)	12 × 12 × 4.25 in	27 lb	\$2,010.00
201173	50 lb (25 kg)	12 × 12 × 4.25 in	27 lb	\$2,010.00
201174	100 lb (50 kg)	12 × 12 × 4.25 in	27 lb	\$2,010.00

CW-90B with 480 Plus Package

Part #	Platform Capacity	Dimensions (L × W × H)	Est. Weight	Price
115 VAC, LED, Numeric keypad, US Plug-Type B				
201163	5 lb (2.5 kg)	10 × 10 × 4.25 in	24 lb	\$1,915.00
201164	10 lb (5 kg)	10 × 10 × 4.25 in	24 lb	\$1,915.00
201165	25 lb (10 kg)	10 × 10 × 4.25 in	24 lb	\$1,915.00
201166	25 lb (10 kg)	12 × 12 × 4.25 in	27 lb	\$2,010.00
201167	50 lb (25 kg)	12 × 12 × 4.25 in	27 lb	\$2,010.00
201168	100 lb (50 kg)	12 × 12 × 4.25 in	27 lb	\$2,010.00
90-264 VAC, LED, Numeric keypad, Euro Plug-Type E				
201175	5 lb (2.5 kg)	10 × 10 × 4.25 in	24 lb	\$1,915.00
201176	10 lb (5 kg)	10 × 10 × 4.25 in	24 lb	\$1,915.00
201177	25 lb (10 kg)	10 × 10 × 4.25 in	24 lb	\$1,915.00
201178	25 lb (10 kg)	12 × 12 × 4.25 in	27 lb	\$2,010.00
201179	50 lb (25 kg)	12 × 12 × 4.25 in	27 lb	\$2,010.00
201180	100 lb (50 kg)	12 × 12 × 4.25 in	27 lb	\$2,010.00



† US plug (NA) - Type B



†† Euro Plug - Type E

Ready-n-Weigh Bench Scale System

CW-90B Bench Scale and 482/482 Plus Indicator Package

BENCH SCALES



Scale and Indicator Package

Approvals



Measurement
Canada
Approved



Dimensions

CW-90B Bench Scale and 482/482 Plus Indicator

10 × 10 in

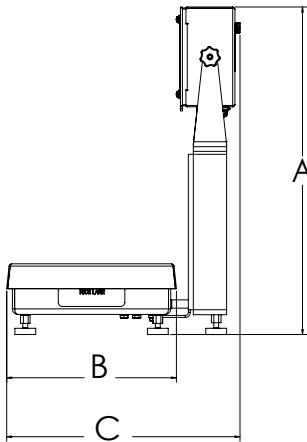
A	19.50 in	E	9.25 in
B	10.25 in	F	4.25 in
C	14.53 in	G	10.25 in
D	13.25 in		

Note: 1 in = 25.4 mm

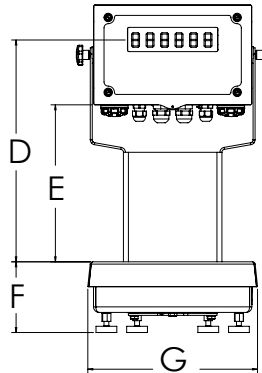
12 × 12 in

A	19.50 in	E	9.25 in
B	12.25 in	F	4.25 in
C	16.53 in	G	12.25 in
D	13.25 in		

Note: 1 in = 25.4 mm



CW-90B with 482 indicator



Standard Features

- Package includes scale with IP67 aluminum environmentally sealed load cell with an indicator and 12-inch column
- Factory calibrated with indicator setup and configured for 5,000 divisions
- Scale includes rubber feet to provide exceptional traction and avoid scratching surfaces along with removable top cover for ease of cleaning
- AC power 100 to 240 VAC
- LCD backlit indicator display for a variety of environments
- Battery backed time and date
- Standard RS-232 serial ports for connecting to a variety of peripherals

CW-90B Specifications

Load Cell, NTEP Certified:

IP67 aluminum, environmentally sealed

Scale Construction:

304 stainless steel

Maximum Overload:

180% to 200% depending on capacity

Overload Protection:

Five-point, independently adjusted

Scale Frame:

AISI304L, straight line finish, Ra=45 ± 10

Scale Cover:

AISI304L, straight line finish, Ra=45 ± 10

Cable Length:

34 in

Temperature:

Compensated:

14 °F to 104 °F (-10 °C to 40 °C)

Approvals:

NTEP 12-123, Class III 5,000 d

Measurement Canada AM-5892C

CE

cULus

Warranty:

Two-year limited

482/482 Plus Specifications

Communication Ports:

Com 1: RS-232 full duplex

Com 2: RS-232 full duplex or 20 mA simplex, continuous

Both ports 1200, 2400, 4800, 9600, 19200, 38400 baud seven or eight data bits, even, odd or no parity

Display:

LCD backlit display, transmissive/transflective 0.8 in (20 mm), six-digit, seven-segment

Status Annunciators:

Gross, net, center of zero, standstill, lb, kg, tare, preset tare

Keys/Buttons:

Flat membrane panel, embossed keys, tactile feel

Rating/Material:

Enclosure: NEMA Type 4X/IP66, heavy-gauge stainless steel

Approvals:

NTEP 12-123

Measurement Canada AM-5892C

CE Marked

cULus Listed

Warranty:

Two-year limited

Ready-n-Weigh Bench Scale System

CW-90B Bench Scale and 482/482 Plus Indicator Package

BENCH SCALES

CW-90B with 482 Package

Part #	Platform Capacity	Dimensions (L × W × H)	Est. Weight	Price
115 VAC, LCD, US Plug-Type B				
201463	5 lb (2.5 kg)	10 × 10 × 4.25 in	24 lb	\$2,065.00
201464	10 lb (5 kg)	10 × 10 × 4.25 in	24 lb	\$2,065.00
201465	25 lb (10 kg)	10 × 10 × 4.25 in	24 lb	\$2,065.00
201466	25 lb (10 kg)	12 × 12 × 4.25 in	27 lb	\$2,160.00
201467	50 lb (25 kg)	12 × 12 × 4.25 in	27 lb	\$2,160.00
201468	100 lb (50 kg)	12 × 12 × 4.25 in	27 lb	\$2,160.00
90-264 VAC, LCD, Euro Plug-Type E				
201480	5 lb (2.5 kg)	10 × 10 × 4.25 in	24 lb	\$2,065.00
201485	10 lb (5 kg)	10 × 10 × 4.25 in	24 lb	\$2,065.00
201486	25 lb (10 kg)	10 × 10 × 4.25 in	24 lb	\$2,065.00
201487	25 lb (10 kg)	12 × 12 × 4.25 in	27 lb	\$2,160.00
201488	50 lb (25 kg)	12 × 12 × 4.25 in	27 lb	\$2,160.00
201489	100 lb (50 kg)	12 × 12 × 4.25 in	27 lb	\$2,160.00

CW-90B with 482 Package

Part #	Platform Capacity	Dimensions (L × W × H)	Est. Weight	Price
115 VAC, LCD, Numeric keypad, US Plug-Type B				
201469	5 lb (2.5 kg)	10 × 10 × 4.25 in	24 lb	\$2,065.00
201475	10 lb (5 kg)	10 × 10 × 4.25 in	24 lb	\$2,065.00
201476	25 lb (10 kg)	10 × 10 × 4.25 in	24 lb	\$2,065.00
201477	25 lb (10 kg)	12 × 12 × 4.25 in	27 lb	\$2,160.00
201478	50 lb (25 kg)	12 × 12 × 4.25 in	27 lb	\$2,160.00
201479	100 lb (50 kg)	12 × 12 × 4.25 in	27 lb	\$2,160.00
90-264 VAC, LCD, Numeric keypad, Euro Plug-Type E				
201490	5 lb (2.5 kg)	10 × 10 × 4.25 in	24 lb	\$2,065.00
201491	10 lb (5 kg)	10 × 10 × 4.25 in	24 lb	\$2,065.00
201492	25 lb (10 kg)	10 × 10 × 4.25 in	24 lb	\$2,065.00
201493	25 lb (10 kg)	12 × 12 × 4.25 in	27 lb	\$2,160.00
201494	50 lb (25 kg)	12 × 12 × 4.25 in	27 lb	\$2,160.00
201495	100 lb (50 kg)	12 × 12 × 4.25 in	27 lb	\$2,160.00



[†] US plug (NA) - Type B



^{**} Euro Plug - Type E

Ready-n-Weigh Bench Scale System

CW-90B Bench Scale and 680 Indicator Package

BENCH SCALES



Scale and Indicator Package

Approvals



Measurement
Canada
Approved



CW-90B with 680 Package

Part #	Platform Capacity	Dimensions (L x W x H)	Est. Weight	Price
115-230 VAC, LED, Numeric, US Plug-Type B				
201308	5 lb (2.5 kg)	10 x 10 x 4.25 in	24 lb	\$1,865.00
201309	10 lb (5 kg)	10 x 10 x 4.25 in	24 lb	\$1,865.00
201310	25 lb (10 kg)	10 x 10 x 4.25 in	24 lb	\$1,865.00
201311	25 lb (10 kg)	12 x 12 x 4.25 in	27 lb	\$1,960.00
201312	50 lb (25 kg)	12 x 12 x 4.25 in	27 lb	\$1,960.00
201313	100 lb (50 kg)	12 x 12 x 4.25 in	27 lb	\$1,960.00
115-230 VAC, LED, Numeric, Euro Plug-Type E				
201314	5 lb (2.5 kg)	10 x 10 x 4.25 in	24 lb	\$1,865.00
201315	10 lb (5 kg)	10 x 10 x 4.25 in	24 lb	\$1,865.00
201319	25 lb (10 kg)	10 x 10 x 4.25 in	24 lb	\$1,865.00
201320	25 lb (10 kg)	12 x 12 x 4.25 in	27 lb	\$1,960.00
201321	50 lb (25 kg)	12 x 12 x 4.25 in	27 lb	\$1,960.00
201322	100 lb (50 kg)	12 x 12 x 4.25 in	27 lb	\$1,960.00



* US plug (NA) - Type B



** Euro Plug - Type E

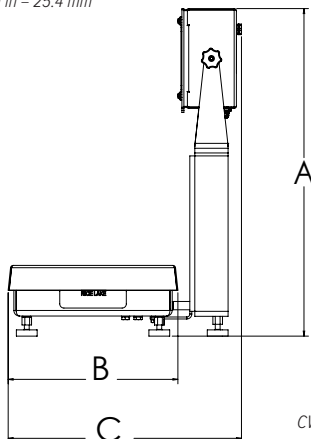
Dimensions

CW-90B Bench Scale and 680 Indicator			
10 x 10 in			
A	19.56 in	E	9.31 in
B	10.25 in	F	4.25 in
C	15.83 in	G	10.25 in
D	13.31 in		

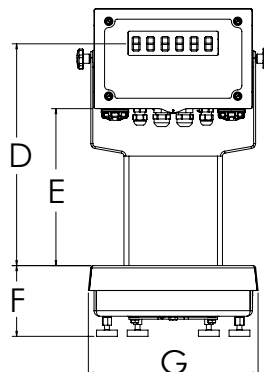
Note: 1 in = 25.4 mm

12 x 12 in			
A	19.56 in	E	9.31 in
B	12.25 in	F	4.25 in
C	16.83 in	G	12.25 in
D	13.31 in		

Note: 1 in = 25.4 mm



CW-90B with 680 indicator



Standard Features

- Package includes scale with IP67 aluminum environmentally sealed load cell with an indicator and 12-inch column
- Factory calibrated with indicator setup and configured for 5,000 divisions
- Scale includes rubber feet to provide exceptional traction and avoid scratching surfaces along with removable top cover for ease of cleaning
- AC power 100 to 240 VAC
- LCD backlit indicator display for a variety of environments
- Battery backed time and date
- Standard RS-232 serial ports for connecting to a variety of peripherals
- Ethernet TCP/IP comes standard

CW-90B Specifications

Load Cell, NTEP Certified:

IP67 aluminum, environmentally sealed

Scale Construction:

304 stainless steel

Maximum Overload:

180% to 200% depending on capacity

Overload Protection:

Five-point, independently adjusted

Scale Frame:

AISI304L, straight line finish, Ra=45 ± 10

Scale Cover:

AISI304L, straight line finish, Ra=45 ± 10

Cable Length:

34 in

Temperature:

Compensated:

14 °F to 104 °F (-10 °C to 40 °C)

Approvals:

NTEP 95-072, Class III 5,000 d

Measurement Canada AM-5082

NSF

Load cell is cFMus Approved

Warranty:

Two-year limited

680 Specifications

Communication Ports:

Two full-duplex RS-232

RS-485/422 (five -wire)

Micro USB (device)

Ethernet TCP/IP (10/100)

Display:

Seven 0.8 in tall, seven-segment digits

Annunciators:

Eight LED

Keys/Buttons:

Flat membrane panel, tactile feel

(18 buttons plus on/off)

Rating/Material:

IP69K (IP66 with RJ45)

AISI 304 stainless Steel

Approvals:

NTEP 19-021

Measurement Canada AM-6121C

cULus Listed

CE Marked

Warranty:

Two-year limited

Ready-n-Weigh Bench Scale System

CW-90XB Bench Scale and 380 Indicator Package

BENCH SCALES



Approvals



Measurement
Canada
Approved



CW-90XB with 380 Package

Part #	Capacity	Dimensions (L × W × H)	Est. Weight	Price
208543	5 lb (2.5 kg)	10 × 10 × 4.25 in	24 lb	\$2,135.00
208544	10 lb (5 kg)	10 × 10 × 4.25 in	24 lb	\$2,135.00
208545	25 lb (10 kg)	10 × 10 × 4.25 in	24 lb	\$2,135.00
208546	25 lb (10 kg)	12 × 12 × 4.25 in	27 lb	\$2,230.00
208547	50 lb (25 kg)	12 × 12 × 4.25 in	27 lb	\$2,230.00
208548	100 lb (50 kg)	12 × 12 × 4.25 in	27 lb	\$2,230.00

Options/Accessories

Part #	Description	Price
206433†	External AC adapter	\$60.00
204258	Real-time clock module	\$127.00



† US plug (NA) - Type A

Dimensions

CW-90XB Bench Scale and 380 Indicator

10 × 10 in

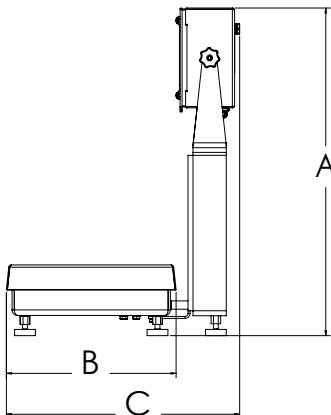
A	19.56 in	E	9.44 in
B	10.20 in	F	4.25 in
C	14.02 in	G	10.20 in
D	13.36 in		

Note: 1 in = 25.4 mm

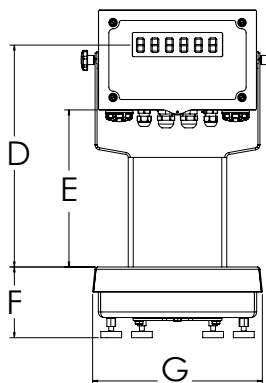
12 × 12 in

A	19.56 in	E	9.31 in
B	12.29 in	F	4.25 in
C	16.07 in	G	12.29 in
D	13.23 in		

Note: 1 in = 25.4 mm



CW-90XB with 380 indicator



Standard Features

- Package includes scale with IP69K stainless steel hermetically sealed load cell with an indicator and 12-inch column
- Factory calibrated with indicator setup and configured for 5,000 divisions
- Scale includes rubber feet to provide exceptional traction and avoid scratching surfaces along with a removable top cover for ease of cleaning
- Powered by four alkaline C-cell batteries (not included) or external AC adapter (not included)
- Standard RS-232 serial port for connecting to a variety of peripherals

CW-90XB Specifications

Load Cell, NTEP Certified:

IP69K stainless steel and hermetically sealed

Scale Construction:

304 stainless steel

Maximum Overload:

180% to 200% depending on capacity

Overload Protection:

Five-point, independently adjusted

Scale Frame:

AISI304L, straight line finish, Ra=45 ± 10

Scale Cover:

AISI304L, straight line finish, Ra=45 ± 10

Cable Length:

34 in

Temperature:

Compensated:

14 °F to 104 °F (-10 °C to 40 °C)

Approvals:

NTEP 95-072, Class III 5,000 d

Measurement Canada AM-5082

Load cell is FM approved

Warranty:

Three-year limited (includes water ingress)

380 Specifications

Power:

Batteries: Four alkaline C-cell (not included)

Optional: 115/230 VAC to 12 VDC adapter

Battery Life:

100 hours on alkaline batteries with one 350 ohm load cell, no backlight

Communication Ports:

One RS-232 (three-wire)

One USB 2.0

Display:

Six 1-inch tall, LCD digits

Status Annunciators:

g, lb, t, tn, kg, oz, battery level, PT, LT, gross, zero, unstable, net

Keys/Buttons:

5 tactile buttons

Rating/Material:

Enclosure: IP66, 304 Stainless steel

Approvals:

NTEP 21-051

Measurement Canada AM-6184

CE Marked

cULus Listed

Warranty:

Two-year limited

Ready-n-Weigh Bench Scale System

CW-90XB Bench Scale and 480/480 Plus Indicator Package

BENCH SCALES



Scale
and
Indicator
Package

Standard Features

- Package includes scale with IP69K stainless steel hermetically sealed load cell with an indicator and 12-inch column
- Factory calibrated with indicator setup and configured for 5,000 divisions
- Scale includes rubber feet to provide exceptional traction and avoid scratching surfaces along with removable top cover for ease of cleaning
- AC power 100 to 240 VAC
- Numeric keypad (480 plus)
- Battery backed time and date
- Standard RS-232 serial ports for connecting to peripherals

CW-90XB Specifications

Load Cell, NTEP Certified:

IP69K stainless steel and hermetically sealed

Scale Construction:

304 stainless steel

Maximum Overload:

180% to 200% depending on capacity

Overload Protection:

Five-point, independently adjusted

Scale Frame:

AISI304L, straight line finish, Ra = 45 ± 10

Scale Cover:

AISI304L, straight line finish, Ra = 45 ± 10

Cable Length:

34 in

Temperature:

Compensated:
14 °F to 104 °F (-10 °C to 40 °C)

CW-90XB Approvals:

NTEP CC 95-072, Class III 5,000 d
Measurement Canada AM-5082
Load cell is FM approved

Warranty:

Three-year limited (includes water ingress)

480/480 Plus Specifications

Communication Ports:

Com 1: RS-232 full duplex
Com 2: RS-232 full duplex or 20 mA simplex, continuous
Both ports 1200, 2400, 4800, 9600, 19200, 38400 baud seven or eight data bits, even, odd or no parity

Display:

LED display 0.8 in (20 mm), six-digit, seven-segment

Status Annunciators:

Gross, net, center of zero, standstill, lb, kg, tare, preset tare

Keys/Buttons:

Flat membrane panel, embossed keys, tactile feel

Rating/Material:

Enclosure: NEMA Type 4X/IP66, heavy-gauge stainless steel

Approvals:

NTEP 12-123
Measurement Canada AM-5892C
CE Marked
cULus Listed

Warranty:

Two-year limited

Approvals



Measurement
Canada
Approved



Dimensions

CW-90XB Bench Scale and 480/480 Plus Indicator

10 × 10 in

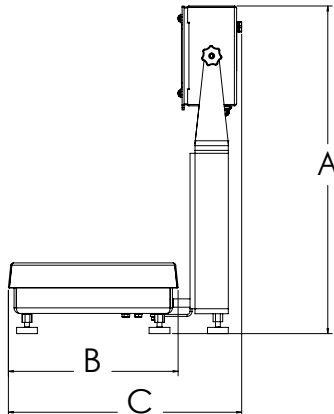
A	19.50 in	E	9.25 in
B	10.25 in	F	4.25 in
C	14.53 in	G	10.25 in
D	13.25 in		

Note: 1 in = 25.4 mm

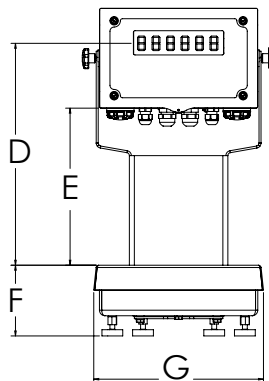
12 × 12 in

A	19.50 in	E	9.25 in
B	12.25 in	F	4.25 in
C	16.53 in	G	12.25 in
D	13.25 in		

Note: 1 in = 25.4 mm



CW-90XB with 480 indicator



Ready-n-Weigh Bench Scale System

CW-90XB Bench Scale and 480/480 Plus Indicator Package

BENCH SCALES

CW-90XB with 480 Package

Part #	Platform Capacity	Dimensions (L × W × H)	Est. Weight	Price
115 VAC, LED, US Plug-Type B				
201241	5 lb (2.5 kg)	10 × 10 × 4.25 in	24 lb	\$2,505.00
201242	10 lb (5 kg)	10 × 10 × 4.25 in	24 lb	\$2,505.00
201243	25 lb (10 kg)	10 × 10 × 4.25 in	24 lb	\$2,505.00
201244	25 lb (10 kg)	12 × 12 × 4.25 in	27 lb	\$2,600.00
201245	50 lb (25 kg)	12 × 12 × 4.25 in	27 lb	\$2,600.00
201246	100 lb (50 kg)	12 × 12 × 4.25 in	27 lb	\$2,600.00
90-264 VAC, LED, Euro Plug-Type E				
201254	5 lb (2.5 kg)	10 × 10 × 4.25 in	24 lb	\$2,505.00
201255	10 lb (5 kg)	10 × 10 × 4.25 in	24 lb	\$2,505.00
201257	25 lb (10 kg)	10 × 10 × 4.25 in	24 lb	\$2,505.00
201258	25 lb (10 kg)	12 × 12 × 4.25 in	27 lb	\$2,600.00
201259	50 lb (25 kg)	12 × 12 × 4.25 in	27 lb	\$2,600.00
201260	100 lb (50 kg)	12 × 12 × 4.25 in	27 lb	\$2,600.00

CW-90XB with 480 Plus Package

Part #	Platform Capacity	Dimensions (L × W × H)	Est. Weight	Price
115 VAC, LED, Numeric, US Plug-Type B				
201247	5 lb (2.5 kg)	10 × 10 × 4.25 in	24 lb	\$2,505.00
201248	10 lb (5 kg)	10 × 10 × 4.25 in	24 lb	\$2,505.00
201249	25 lb (10 kg)	10 × 10 × 4.25 in	24 lb	\$2,505.00
201250	25 lb (10 kg)	12 × 12 × 4.25 in	27 lb	\$2,600.00
201251	50 lb (25 kg)	12 × 12 × 4.25 in	27 lb	\$2,600.00
201253	100 lb (50 kg)	12 × 12 × 4.25 in	27 lb	\$2,600.00
90-264 VAC, LED, Numeric, Euro Plug-Type E				
201261	5 lb (2.5 kg)	10 × 10 × 4.25 in	24 lb	\$2,505.00
201262	10 lb (5 kg)	10 × 10 × 4.25 in	24 lb	\$2,505.00
201263	25 lb (10 kg)	10 × 10 × 4.25 in	24 lb	\$2,505.00
201264	25 lb (10 kg)	12 × 12 × 4.25 in	27 lb	\$2,600.00
201265	50 lb (25 kg)	12 × 12 × 4.25 in	27 lb	\$2,600.00
201266	100 lb (50 kg)	12 × 12 × 4.25 in	27 lb	\$2,600.00



* US plug (NA) - Type B



** Euro Plug - Type E

Ready-n-Weigh Bench Scale System

CW-90XB Bench Scale and 482/482 Plus Indicator Package

BENCH SCALES



Scale
and
Indicator
Package

Approvals



Measurement
Canada
Approved



Standard Features

- Package includes scale with IP69K stainless steel hermetically sealed load cell with an indicator and 12-inch
- Factory calibrated with indicator setup and configured for 5,000 divisions
- Scale includes rubber feet to provide exceptional traction and avoid scratching surfaces along with removable top cover for ease of cleaning
- AC power 100 to 240 VAC
- LCD backlit display suitable for a variety of environments
- Battery backed time and date
- Standard RS-232 serial ports for connecting to a variety of peripherals

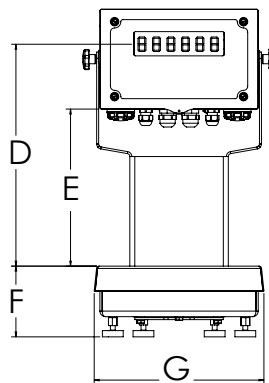
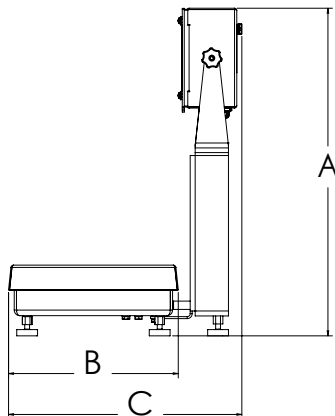
Dimensions

CW-90XB Bench Scale and 482/482 Plus Indicator			
10 × 10 in			
A	19.50 in	E	9.25 in
B	10.25 in	F	4.25 in
C	14.53 in	G	10.25 in
D	13.25 in		

Note: 1 in = 25.4 mm

12 × 12 in			
A	19.50 in	E	9.25 in
B	12.25 in	F	4.25 in
C	16.53 in	G	12.25 in
D	13.25 in		

Note: 1 in = 25.4 mm



CW-90XB with 482 indicator

Specifications

Load Cell, NTEP Certified:

IP69K stainless steel and hermetically sealed

Scale Construction:

304 stainless steel

Maximum Overload:

180% to 200% depending on capacity

Overload Protection:

Five-point, independently adjusted

Scale Frame:

AISI304L, straight line finish, Ra=45 ± 10

Scale Cover:

AISI304L, straight line finish, Ra=45 ± 10

Cable Length:

34 in

Temperature:

Compensated:
14 °F to 104 °F (-10 °C to 40 °C)

Approvals:

NTEP CC 95-072, Class III 5,000 d
Measurement Canada AM-5082
Load cell is FM approved

Warranty:

Three-year limited (includes water ingress)

482/482 Plus Specifications

Communication Ports:

Com 1: RS-232 full duplex
Com 2: RS-232 full duplex or 20 mA simplex, continuous
Both ports 1200, 2400, 4800, 9600, 19200, 38400 baud seven or eight data bits, even, odd or no parity

Display:

LCD backlit display, transmissive/transflective
0.8 in (20 mm), six-digit, seven-segment

Status Annunciators:

Gross, net, center of zero, standstill, lb, kg, tare, preset tare

Keys/Buttons:

Flat membrane panel, embossed keys, tactile feel

Rating/Material:

Enclosure: NEMA Type 4X/IP66, heavy-gauge stainless steel

Approvals:

NTEP 12-123
Measurement Canada AM-5892C
CE Marked
cULus Listed

Warranty:

Two-year limited

Ready-n-Weigh Bench Scale System

CW-90XB Bench Scale and 482/482 Plus Indicator Package

BENCH SCALES

CW-90XB with 482 Package

Part #	Platform Capacity	Dimensions (L × W × H)	Est. Weight	Price
115 VAC, LCD, US Plug-Type B				
201533	5 lb (2.5 kg)	10 × 10 × 4.25 in	24 lb	\$2,655.00
201534	10 lb (5 kg)	10 × 10 × 4.25 in	24 lb	\$2,655.00
201535	25 lb (10 kg)	10 × 10 × 4.25 in	24 lb	\$2,655.00
201536	25 lb (10 kg)	12 × 12 × 4.25 in	27 lb	\$2,750.00
201537	50 lb (25 kg)	12 × 12 × 4.25 in	27 lb	\$2,750.00
201538	100 lb (50 kg)	12 × 12 × 4.25 in	27 lb	\$2,750.00
90-264 VAC, LCD, Euro Plug-Type E				
201546	5 lb (2.5 kg)	10 × 10 × 4.25 in	24 lb	\$2,655.00
201547	10 lb (5 kg)	10 × 10 × 4.25 in	24 lb	\$2,655.00
201548	25 lb (10 kg)	10 × 10 × 4.25 in	24 lb	\$2,655.00
201549	25 lb (10 kg)	12 × 12 × 4.25 in	27 lb	\$2,750.00
201550	50 lb (25 kg)	12 × 12 × 4.25 in	27 lb	\$2,750.00
201551	100 lb (50 kg)	12 × 12 × 4.25 in	27 lb	\$2,750.00

CW-90XB with 482 Plus Package

Part #	Platform Capacity	Dimensions (L × W × H)	Est. Weight	Price
115 VAC, LCD, Numeric, US Plug-Type B				
201539	5 lb (2.5 kg)	10 × 10 × 4.25 in	24 lb	\$2,655.00
201541	10 lb (5 kg)	10 × 10 × 4.25 in	24 lb	\$2,655.00
201542	25 lb (10 kg)	10 × 10 × 4.25 in	24 lb	\$2,655.00
201543	25 lb (10 kg)	12 × 12 × 4.25 in	27 lb	\$2,750.00
201544	50 lb (25 kg)	12 × 12 × 4.25 in	27 lb	\$2,750.00
201545	100 lb (50 kg)	12 × 12 × 4.25 in	27 lb	\$2,750.00
90-264 VAC, LCD, Numeric, Euro Plug-Type E				
201552	5 lb (2.5 kg)	10 × 10 × 4.25 in	24 lb	\$2,655.00
201553	10 lb (5 kg)	10 × 10 × 4.25 in	24 lb	\$2,655.00
201554	25 lb (10 kg)	10 × 10 × 4.25 in	24 lb	\$2,655.00
201555	25 lb (10 kg)	12 × 12 × 4.25 in	27 lb	\$2,750.00
201556	50 lb (25 kg)	12 × 12 × 4.25 in	27 lb	\$2,750.00
201557	100 lb (50 kg)	12 × 12 × 4.25 in	27 lb	\$2,750.00



* US plug (NA) - Type B



** Euro Plug - Type E

Ready-n-Weigh Bench Scale System

CW-90XB Bench Scale and 680 Indicator Package

BENCH SCALES



Approvals



Measurement
Canada
Approved



CW-90XB with 680 Package

Part #	Platform Capacity	Dimensions (L × W × H)	Est. Weight	Price
115-230 VAC, LED, Numeric, US Plug-Type B				
201409	5 lb (2.5 kg)	10 × 10 × 4.25 in	24 lb	\$2,455.00
201410	10 lb (5 kg)	10 × 10 × 4.25 in	24 lb	\$2,455.00
201411	25 lb (10 kg)	10 × 10 × 4.25 in	24 lb	\$2,455.00
201412	25 lb (10 kg)	12 × 12 × 4.25 in	27 lb	\$2,550.00
201413	50 lb (25 kg)	12 × 12 × 4.25 in	27 lb	\$2,550.00
201414	100 lb (50 kg)	12 × 12 × 4.25 in	27 lb	\$2,550.00
115-230 VAC, LED, Numeric, Euro Plug-Type E				
201415	5 lb (2.5 kg)	10 × 10 × 4.25 in	24 lb	\$2,455.00
201416	10 lb (5 kg)	10 × 10 × 4.25 in	24 lb	\$2,455.00
201417	25 lb (10 kg)	10 × 10 × 4.25 in	24 lb	\$2,455.00
201418	25 lb (10 kg)	12 × 12 × 4.25 in	27 lb	\$2,550.00
201419	50 lb (25 kg)	12 × 12 × 4.25 in	27 lb	\$2,550.00
201420	100 lb (50 kg)	12 × 12 × 4.25 in	27 lb	\$2,550.00



† US plug (NA) - Type B

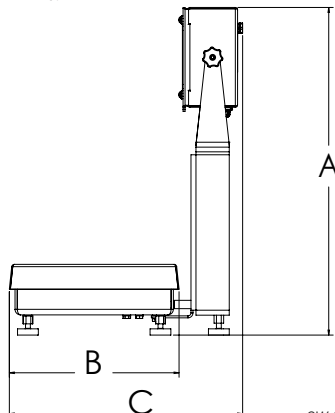


†† Euro Plug - Type E

Dimensions

CW-90XB Bench Scale and 680 Indicator			
10 × 10 in			
A	19.56 in	E	9.31 in
B	10.25 in	F	4.25 in
C	15.83 in	G	10.25 in
D	13.31 in		

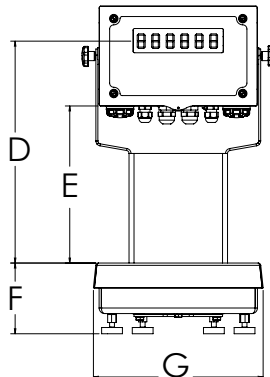
Note: 1 in = 25.4 mm



CW-90XB with 680 indicator

12 × 12 in			
A	19.56 in	E	9.31 in
B	12.25 in	F	4.25 in
C	16.83 in	G	12.25 in
D	13.31 in		

Note: 1 in = 25.4 mm



Standard Features

- Package includes scale with IP69K stainless steel hermetically sealed load cell with an indicator and 12-inch column
- Factory calibrated with indicator setup and configured for 5,000 divisions
- Scale includes rubber feet to provide exceptional traction and avoid scratching surfaces along with removable top cover for ease of cleaning
- AC power 100 to 240 VAC
- Full numeric keypad
- LED display suitable for a variety of environments
- Battery backed time and date
- Standard RS-232 serial ports for connecting to a variety of peripherals
- Ethernet TCP/IP

CW-90XB Specifications

Load Cell, NTEP Certified:

IP69K stainless steel and hermetically sealed

Scale Construction:

304 stainless steel

Maximum Overload:

180% to 200% depending on capacity

Overload Protection:

Five-point, independently adjusted

Scale Frame:

AISI304L, straight line finish, Ra = 45 ± 10

Scale Cover:

AISI304L, straight line finish, Ra = 45 ± 10

Cable Length:

34 in

Temperature:

Compensated:

14 °F to 104 °F (-10 °C to 40 °C)

Approvals:

NTEP CC 95-072, Class III 5,000 d

Measurement Canada AM-5082

Load cell is FM approved

Warranty:

Three-year limited (includes water ingress)

680 Specifications

Communication Ports:

Two RS-232 (three-wire)

RS-485/422 (two-wire or four-wire)

Micro USB (device)

Ethernet TCP/IP (10/100)

Display:

Seven 0.8-inch tall, seven-segment digits

Status Annunciators:

Eight LED annunciators

Keys/Buttons:

Flat membrane panel, tactile feel
(18 buttons plus ON/OFF)

Rating/Material:

Rating: IP69K (IP66 with RJ45)

Material: AISI 304 stainless steel

Approvals:

NTEP 19-021

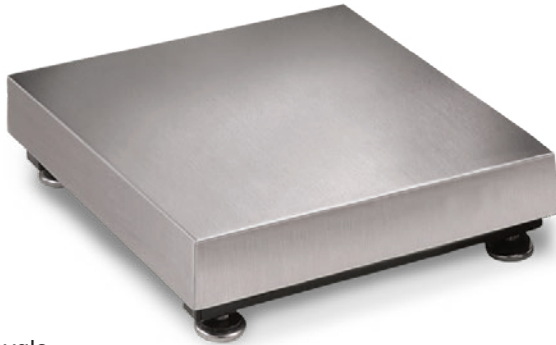
Measurement Canada AM-6121C

cULus Listed

CE Marked

Warranty:

Two-year limited



Approvals



Measurement
Canada
Approved



† Load cell
approval



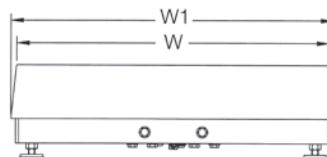
†† Load cell
approval

Part Number/Price

Part #	Capacity	Platform Dimensions (L x W x H)	Est. Weight	Price
18580 †	30 lb (15 kg)	12 x 12 x 4.12 in	20 lb	\$935.00
18582 †	50 lb (25 kg)	12 x 12 x 4.12 in	20 lb	\$935.00
18584 †	100 lb (50 kg)	12 x 12 x 4.12 in	20 lb	\$935.00
18586 ††	50 lb (25 kg)	12 x 18 x 4.12 in	37 lb	\$1,030.00
18588 ††	100 lb (50 kg)	12 x 18 x 4.12 in	37 lb	\$1,030.00
18590 †	50 lb (25 kg)	18 x 18 x 5.25 in	68 lb	\$1,270.00
18592 †	100 lb (50 kg)	18 x 18 x 5.25 in	68 lb	\$1,270.00
18594 †	150 lb (75 kg)	18 x 18 x 5.25 in	68 lb	\$1,270.00
18596 †	200 lb (100 kg)	18 x 18 x 5.25 in	68 lb	\$1,270.00
18598 †	250 lb (125 kg)	18 x 18 x 5.25 in	68 lb	\$1,270.00
18600 †	300 lb (150 kg)	18 x 18 x 5.25 in	68 lb	\$1,270.00
18602 †	500 lb (250 kg)	18 x 18 x 5.25 in	68 lb	\$1,270.00
18604 ††	1,000 lb (500 kg)	18 x 18 x 5.25 in	68 lb	\$1,270.00
18606 †	50 lb (25 kg)	24 x 18 x 5.25 in	78 lb	\$1,400.00
18608 †	100 lb (50 kg)	24 x 18 x 5.25 in	78 lb	\$1,400.00
18610 †	150 lb (75 kg)	24 x 18 x 5.25 in	78 lb	\$1,400.00
18612 †	200 lb (100 kg)	24 x 18 x 5.25 in	78 lb	\$1,400.00
18614 †	250 lb (125 kg)	24 x 18 x 5.25 in	78 lb	\$1,400.00
18616 †	300 lb (150 kg)	24 x 18 x 5.25 in	78 lb	\$1,400.00
18618 †	500 lb (250 kg)	24 x 18 x 5.25 in	78 lb	\$1,400.00
18620 ††	1,000 lb (500 kg)	24 x 18 x 5.25 in	78 lb	\$1,400.00
18622 †	100 lb (50 kg)	24 x 24 x 5.25 in	78 lb	\$1,545.00
18624 †	150 lb (75 kg)	24 x 24 x 5.25 in	84 lb	\$1,545.00
18626 †	200 lb (100 kg)	24 x 24 x 5.25 in	84 lb	\$1,545.00
18628 †	250 lb (125 kg)	24 x 24 x 5.25 in	84 lb	\$1,545.00
18630 †	300 lb (150 kg)	24 x 24 x 5.25 in	84 lb	\$1,545.00
18632 †	500 lb (250 kg)	24 x 24 x 5.25 in	84 lb	\$1,545.00
18634 ††	1,000 lb (500 kg)	24 x 24 x 5.25 in	84 lb	\$1,545.00

Options/Accessories

Part #	Description	Catalog Page #
Consult	Scale columns	See page 208
Consult	Ball transfer and roller conveyor scale tops	See page 207
Consult	Mobile scale carts	See page 203 to page 206



Standard Features

- Painted mild steel frame with 304 stainless steel cover
- Base design isolates load cell from overloads and shock loads for added durability
- Specially designed adjustable support feet provide exceptional traction and will not scratch surfaces

Specifications

Load Cell, NTEP Certified:

IP66 aluminum, environmentally sealed

Output Impedance:

350 ohm

Maximum Overload:

150% to 200% depending on capacity

Overload Protection:

Five-point, independently adjusted

Scale Frame:

Mild steel powder coated black

Scale Cover:

AISI304L, straight line finish, Ra=45 ± 10

Cable Length:

10 ft (3 m)

Temperature:

Compensated:

14 °F to 104 °F (-10 °C to 40 °C)

Warranty:

Two-year limited

Approvals:

NTEP 95-072, Class III, 5,000 d

Measurement Canada AM-5082

Dimensions

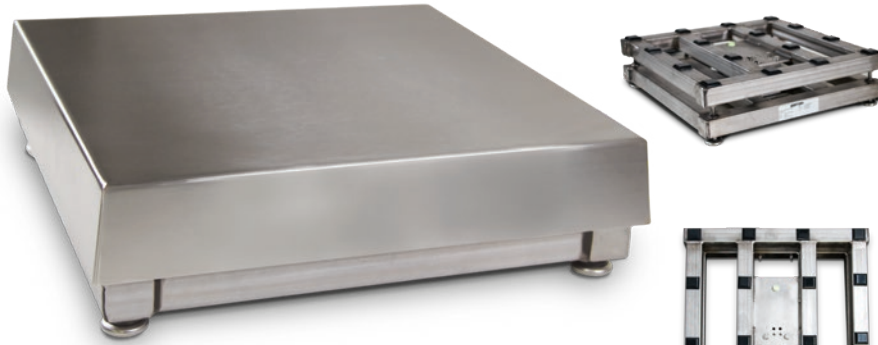
BenchMark MS			
12 x 12 in			
H	4.12 in	W	12.00 in
L	12.00 in	W1	12.50 in
L1	12.50 in		
12 x 18 in			
H	4.12 in	W	18.00 in
L	12.00 in	W1	18.50 in
L1	12.50 in		
18 x 18 in			
H	5.25 in	W	18.00 in
L	18.00 in	W1	18.75 in
L1	18.75 in		
24 x 18 in			
H	5.25 in	W	18.00 in
L	24.00 in	W1	18.75 in
L1	24.75 in		
24 x 24 in			
H	5.25 in	W	24.00 in
L	24.00 in	W1	24.75 in
L1	24.75 in		

Note: 1 in = 25.4 mm

BenchMark® SS

Stainless Steel Bench Scale

BENCH SCALES



Approvals



Measurement
Canada
Approved



APPROVED
† Load cell
approval



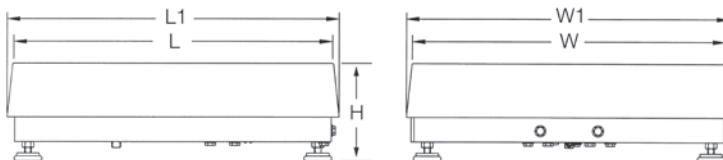
APPROVED
†† Load cell
approval

Part Number/Price

Part #	Capacity	Platform Dimensions (L × W × H)	Est. Weight	Price
186222 †	50 lb (25 kg)	12 × 18 × 4.00 in	37 lb	\$1,095.00
186223 †	100 lb (50 kg)	12 × 18 × 4.00 in	37 lb	\$1,095.00
18591 †	50 lb (25 kg)	18 × 18 × 5.25 in	68 lb	\$1,515.00
18593 †	100 lb (50 kg)	18 × 18 × 5.25 in	68 lb	\$1,515.00
18595 †	150 lb (75 kg)	18 × 18 × 5.25 in	68 lb	\$1,515.00
18597 †	200 lb (100 kg)	18 × 18 × 5.25 in	68 lb	\$1,515.00
18599 †	250 lb (125 kg)	18 × 18 × 5.25 in	68 lb	\$1,515.00
18601 †	300 lb (150 kg)	18 × 18 × 5.25 in	68 lb	\$1,515.00
18603 †	500 lb (250 kg)	18 × 18 × 5.25 in	68 lb	\$1,515.00
18605 ††	1,000 lb (500 kg)	18 × 18 × 5.25 in	68 lb	\$1,515.00
18607 †	50 lb (25 kg)	24 × 18 × 5.25 in	78 lb	\$1,800.00
18609 †	100 lb (50 kg)	24 × 18 × 5.25 in	78 lb	\$1,800.00
18611 †	150 lb (75 kg)	24 × 18 × 5.25 in	78 lb	\$1,800.00
18613 †	200 lb (100 kg)	24 × 18 × 5.25 in	78 lb	\$1,800.00
18615 †	250 lb (125 kg)	24 × 18 × 5.25 in	78 lb	\$1,800.00
18617 †	300 lb (150 kg)	24 × 18 × 5.25 in	78 lb	\$1,800.00
18619 †	500 lb (250 kg)	24 × 18 × 5.25 in	78 lb	\$1,800.00
18621 ††	1,000 lb (500 kg)	24 × 18 × 5.25 in	78 lb	\$1,800.00
18623 †	100 lb (50 kg)	24 × 24 × 5.25 in	84 lb	\$2,215.00
18625 †	150 lb (75 kg)	24 × 24 × 5.25 in	84 lb	\$2,215.00
18627 †	200 lb (100 kg)	24 × 24 × 5.25 in	84 lb	\$2,215.00
18629 †	250 lb (125 kg)	24 × 24 × 5.25 in	84 lb	\$2,215.00
18631 †	300 lb (150 kg)	24 × 24 × 5.25 in	84 lb	\$2,215.00
18633 †	500 lb (250 kg)	24 × 24 × 5.25 in	84 lb	\$2,215.00
18635 ††	1,000 lb (500 kg)	24 × 24 × 5.25 in	84 lb	\$2,215.00

Options/Accessories

Part #	Description	Catalog Page #
Consult	Scale columns	See page 208
Consult	Ball transfer and roller conveyor scale tops	See page 207
Consult	Mobile scale carts	See page 203 to page 206



Standard Features

- 304 stainless steel frame and cover
- Base design isolates load cell from overloads and shock loads for added durability
- Specially designed adjustable support feet provide exceptional traction and will not scratch surfaces

Specifications

Load Cell, NTEP Certified:

IP66 aluminum, environmentally sealed

Output Impedance:

350 ohm

Maximum Overload:

150% to 200% depending on capacity

Overload Protection:

Five-point, independently adjusted

Scale Frame:

AISI304L, glass bead blasted for even appearance

Scale Cover:

AISI304L, straight line finish, Ra=45 ±10

Cable Length:

10 ft (3 m)

Temperature:

Compensated:
14 °F to 104 °F (-10 °C to 40 °C)

Warranty:

Two-year limited

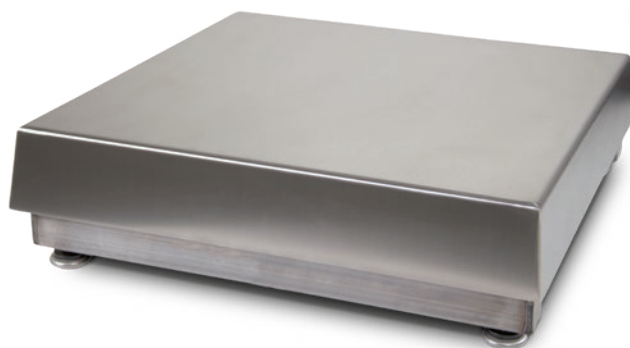
Approvals:

NTEP CC 95-072, Class III, 5,000 d
Measurement Canada AM-5082

Dimensions

BenchMark SS			
12 × 18 in			
H	4.00 in	W	18.00 in
L	12.00 in	W1	18.50 in
L1	12.50 in		
18 × 18 in			
H	5.25 in	W	18.00 in
L	18.00 in	W1	18.75 in
L1	18.75 in		
18 × 24 in			
H	5.25 in	W	18.00 in
L	24.00 in	W1	18.75 in
L1	24.75 in		
24 × 24 in			
H	5.25 in	W	24.00 in
L	24.00 in	W1	24.75 in
L1	24.75 in		

Note: 1 in = 25.4 mm



Approvals



Measurement
Canada
Approved

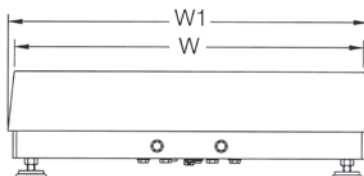
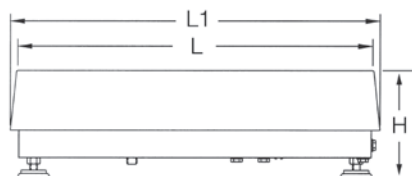


Part Number/Price

Part #	Capacity	Platform Dimensions (L x W x H)	Est. Weight	Price
186897	50 lb (25 kg)	12 x 18 x 4.00 in	37 lb	\$1,555.00
186898	100 lb (50 kg)	12 x 18 x 4.00 in	37 lb	\$1,555.00
86952	50 lb (25 kg)	18 x 18 x 5.25 in	68 lb	\$1,870.00
86953	100 lb (50 kg)	18 x 18 x 5.25 in	68 lb	\$1,870.00
86954	150 lb (75 kg)	18 x 18 x 5.25 in	68 lb	\$1,870.00
86955	200 lb (100 kg)	18 x 18 x 5.25 in	68 lb	\$1,870.00
86956	250 lb (125 kg)	18 x 18 x 5.5 in	68 lb	\$2,235.00
86957	300 lb (150 kg)	18 x 18 x 5.5 in	68 lb	\$2,235.00
86958	500 lb (250 kg)	18 x 18 x 5.5 in	68 lb	\$2,235.00
86959	1,000 lb (500 kg)	18 x 18 x 5.5 in	68 lb	\$2,235.00
86960	50 lb (25 kg)	24 x 18 x 5.5 in	78 lb	\$2,525.00
86961	100 lb (50 kg)	24 x 18 x 5.5 in	78 lb	\$2,525.00
86962	150 lb (75 kg)	24 x 18 x 5.5 in	78 lb	\$2,525.00
86963	200 lb (100 kg)	24 x 18 x 5.5 in	78 lb	\$2,525.00
86964	250 lb (125 kg)	24 x 18 x 5.5 in	78 lb	\$2,525.00
86965	300 lb (150 kg)	24 x 18 x 5.5 in	78 lb	\$2,525.00
86966	500 lb (250 kg)	24 x 18 x 5.5 in	78 lb	\$2,525.00
86967	1,000 lb (500 kg)	24 x 18 x 5.5 in	78 lb	\$2,525.00
86968	100 lb (50 kg)	24 x 24 x 5.5 in	84 lb	\$2,940.00
86969	150 lb (75 kg)	24 x 24 x 5.5 in	84 lb	\$2,940.00
86970	200 lb (100 kg)	24 x 24 x 5.5 in	84 lb	\$2,940.00
86971	250 lb (125 kg)	24 x 24 x 5.5 in	84 lb	\$2,940.00
86972	300 lb (150 kg)	24 x 24 x 5.5 in	84 lb	\$2,940.00
86973	500 lb (250 kg)	24 x 24 x 5.5 in	84 lb	\$2,940.00
86974	1,000 lb (500 kg)	24 x 24 x 5.5 in	84 lb	\$2,940.00

Options/Accessories

Part #	Description	Catalog Page #
Consult	Scale columns	See page 208
Consult	Ball transfer and roller conveyor scale tops	See page 207
Consult	Mobile scale carts	See page 203 to page 206



Standard Features

- 304 stainless steel frame and cover
- Base design isolates load cell from overloads and shock loads for added durability
- Specially designed adjustable support feet provide exceptional traction and will not scratch surfaces

Specifications

Load Cell, NTEP Certified:

IP69K stainless steel, hermetically sealed

Output Impedance:

1,000 ohm

Maximum Overload:

150% to 200% depending on capacity

Overload Protection:

Five-point, independently adjusted

Scale Frame:

AISI304L, glass bead blasted for even appearance

Scale Cover:

AISI304L, straight line finish, Ra=45 ± 10

Cable Length:

10 ft (3 m)

Temperature:

Compensated:
14 °F to 104 °F (-10 °C to 40 °C)

Warranty:

Three-year limited
(includes water ingress)

Approvals:

NTEP CC 95-072, Class III, 5,000 d
Measurement Canada AM-5082
Load cell is FM approved

Dimensions

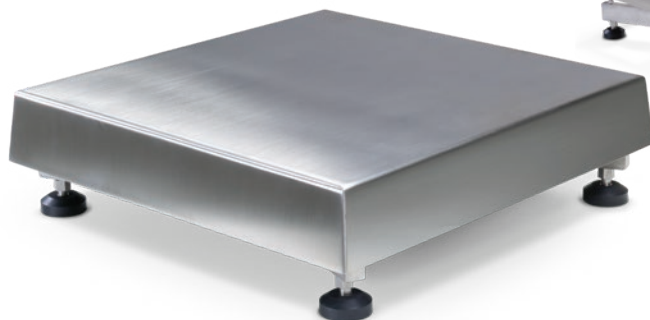
BenchMark HE			
12 x 18 in			
H	4.00 in	W	18.00 in
L	12.00 in	W1	18.50 in
L1	12.50 in		
18 x 18 x 5.25 in			
H	5.25 in	W	18.00 in
L	18.00 in	W1	18.75 in
L1	18.75 in		
18 x 18 x 5.5 in			
H	5.50 in	W	18.00 in
L	18.00 in	W1	18.75 in
L1	18.75 in		
18 x 24 in			
H	5.50 in	W	18.00 in
L	24.00 in	W1	18.75 in
L1	24.75 in		
24 x 24 in			
H	5.50 in	W	24.00 in
L	24.00 in	W1	24.75 in
L1	24.75 in		

Note: 1 in = 25.4 mm

BenchMark® HE-X

Hostile Environment Extreme Bench Scale

BENCH SCALES



Specifications

Load Cell, NTEP Certified:

IP69K stainless steel, hermetically sealed

Output Impedance:

1,000 ohm

Maximum Overload:

150% to 200% depending on capacity

Overload Protection:

Five-point, independently adjusted

Scale Frame:

AISI304L, glass bead blasted for even appearance

Scale Cover:

AISI304L, straight line finish, Ra=45 ± 10

Cable Length:

10 ft (3 m)

Temperature:

Compensated:
14 °F to 104 °F (-10 °C to 40 °C)

Warranty:

Three-year limited (includes water ingress)

Approvals:

Load cell is FM approved

Approvals



Standard Features

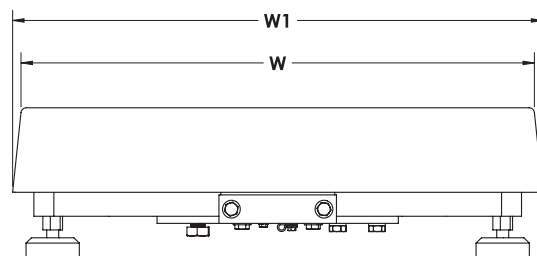
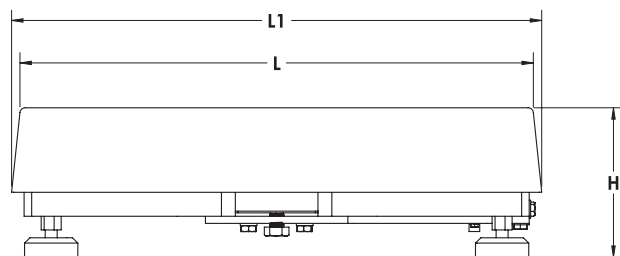
- IP69K stainless steel load cell
- Rugged washdown design, rigid 304 stainless steel frame and cover constructed with continuous welds
- Four adjustable stainless steel support feet
- Meets Sanitary Design Principles
- Meets HACCP requirements

Dimensions

BenchMark HE-X			
12 × 12 in			
H	5.25 in	W	18.00 in
L	12.00 in	W1	18.50 in
L1	12.50 in		
18 × 18 in			
H	5.25 in	W	18.00 in
L	18.00 in	W1	18.75 in
L1	18.75 in		

18 × 24 in			
H	5.25 in	W	24.00 in
L	18.00 in	W1	24.75 in
L1	18.75 in		
24 × 24 in			
H	5.25 in	W	24.00 in
L	24.00 in	W1	24.75 in
L1	24.75 in		

Note: 1 in = 25.4 mm



Part Number/Price

Part #	Capacity	Platform Dimensions (L × W × H)	Est. Weight	Price
192346	50 lb (25 kg)	12 × 18 × 5.25 in	59 lb	\$3,075.00
192347	100 lb (50 kg)	12 × 18 × 5.25 in	59 lb	\$3,075.00
191455	50 lb (25 kg)	18 × 18 × 5.25 in	73 lb	\$3,255.00
191456	100 lb (50 kg)	18 × 18 × 5.25 in	73 lb	\$3,255.00
191457	150 lb (75 kg)	18 × 18 × 5.25 in	73 lb	\$3,255.00
191458	200 lb (100 kg)	18 × 18 × 5.25 in	73 lb	\$3,255.00
191459	250 lb (125 kg)	18 × 18 × 5.25 in	73 lb	\$3,255.00
191460	300 lb (150 kg)	18 × 18 × 5.25 in	73 lb	\$3,255.00
191461	500 lb (250 kg)	18 × 18 × 5.25 in	73 lb	\$3,255.00
191462	1,000 lb (500 kg)	18 × 18 × 5.25 in	73 lb	\$3,255.00
191467	50 lb (25 kg)	18 × 24 × 5.25 in	90 lb	\$3,515.00
191469	100 lb (50 kg)	18 × 24 × 5.25 in	90 lb	\$3,515.00
191470	150 lb (75 kg)	18 × 24 × 5.25 in	90 lb	\$3,515.00
191472	200 lb (100 kg)	18 × 24 × 5.25 in	90 lb	\$3,515.00
191473	250 lb (125 kg)	18 × 24 × 5.25 in	90 lb	\$3,515.00
191474	300 lb (150 kg)	18 × 24 × 5.25 in	90 lb	\$3,515.00
191475	500 lb (250 kg)	18 × 24 × 5.25 in	90 lb	\$3,515.00
191476	1,000 lb (500 kg)	18 × 24 × 5.25 in	90 lb	\$3,515.00
191479	100 lb (50 kg)	24 × 24 × 5.25 in	122 lb	\$3,780.00
191480	150 lb (75 kg)	24 × 24 × 5.25 in	122 lb	\$3,780.00
191481	200 lb (100 kg)	24 × 24 × 5.25 in	122 lb	\$3,780.00
191482	250 lb (125 kg)	24 × 24 × 5.25 in	122 lb	\$3,780.00
191483	300 lb (150 kg)	24 × 24 × 5.25 in	122 lb	\$3,780.00
191485	500 lb (250 kg)	24 × 24 × 5.25 in	122 lb	\$3,780.00
191486	1,000 lb (500 kg)	24 × 24 × 5.25 in	122 lb	\$3,780.00

Options/Accessories

Part #	Description	Catalog Page #
Consult	Scale columns	See page 208
Consult	Ball transfer and roller conveyor scale tops	See page 207
Consult	Mobile scale carts	See page 203 to page 206

BenchMark® LP

Low-Profile Bench Scale

BENCH SCALES



Ideal for aviation weighing. A complete system can be sold with the Tracer® AV2. Reference Aviation section for specifications.

Approvals



Measurement
Canada
Approved

Part Number/Price

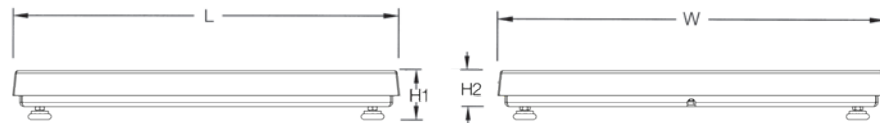
Part #	Capacity	Platform Dimensions L x W x H1 (H2)	Est. Weight	Price
97662	100 lb (50 kg)	18 x 18 x 2.63 in (1.67 in*)	75 lb	\$1,455.00
97663	250 lb (125 kg)	18 x 18 x 2.50 in (1.74 in*)	85 lb	\$1,485.00
97664	500 lb (250 kg)	18 x 18 x 2.69 in (1.93 in*)	85 lb	\$1,525.00
97665	100 lb (50 kg)	24 x 24 x 2.66 in (1.69 in*)	85 lb	\$1,740.00
97666	250 lb (125 kg)	24 x 24 x 2.83 in (2.07 in*)	100 lb	\$1,765.00
97667	500 lb (250 kg)	24 x 24 x 3.02 in (2.26 in*)	100 lb	\$1,800.00
97668	500 lb (250 kg)	30 x 30 x 3.02 in (2.26 in*)	150 lb	\$2,075.00
97669**	1,000 lb (500 kg)	30 x 30 x 3.47 in (2.70 in*)	190 lb	\$2,145.00
97670	500 lb (250 kg)	36 x 36 x 3.02 in (2.26 in*)	175 lb	\$2,720.00
97671**	1,000 lb (500 kg)	36 x 36 x 3.47 in (2.70 in*)	175 lb	\$2,785.00

*Height without adjustable leveling feet

** Non-NTEP or Measurement Canada Approved

Options/Accessories

Part #	Description	Price
208904	20 ft cable with DB-9 connector for connecting to Tracer AV2	\$95.00



Dimensions

BenchMark LP			
PN 97662			
H1	2.63 in	L	18.00 in
H2	1.67 in	W	18.00 in
PN 97663			
H1	2.50 in	L	18.00 in
H2	1.74 in	W	18.00 in
PN 97664			
H1	2.69 in	L	18.00 in
H2	1.93 in	W	18.00 in
PN 97665			
H1	2.66 in	L	24.00 in
H2	1.69 in	W	24.00 in

Note: 1 in = 25.4 mm

PN 97666			
H1	2.83 in	L	24.00 in
H2	2.07 in	W	24.00 in
PN 97667			
H1	3.02 in	L	24.00 in
H2	2.26 in	W	24.00 in
PN 97668			
H1	3.02 in	L	30.00 in
H2	2.26 in	W	30.00 in
PN 97669			
H1	3.47 in	L	30.00 in
H2	2.70 in	W	30.00 in

Note: 1 in = 25.4 mm

Standard Features

- Mild steel base construction
- 304 stainless steel cover
- ABS junction box
- Four planar beam load cells
- Adjustable leveling feet
- 20 ft of EL147 load cell cable
- Holes in lower frame for mounting scale without adjustable leveling feet

Specifications

Load Cell, Rated Output:

IP65 aluminum, 1.0 mV/V ± 10%

End Load Capacity:

60% of full scale capacity

Cable Length:

20 ft (6.1 m) for connecting junction box to indicator

Scale Frame:

Mild steel powder coated black

Scale Cover:

AISI304L, straight line finish, Ra=45 ± 10

Warranty:

Two-year limited

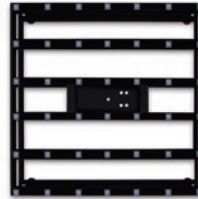
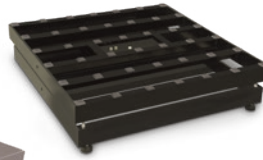
Approvals:

NTEP 08-017, Class III 5,000 d
(except 1,000 lb capacity)
Measurement Canada AM 5660
(except 500 kg capacity)

BenchMark® HD

Heavy-Duty Bench Scale

BENCH SCALES



Standard Features

- Heavy-duty designed mild steel base construction with 304 stainless steel cover
- Polyurethane rubber leveling feet with stainless steel stems

Specifications

Load Cell, NTEP Certified:

IP67 aluminum, environmentally sealed

Output Impedance:

350 ohm

Maximum Overload:

200%

Overload Protection:

Five-point, independently adjusted

Scale Frame:

Mild steel powder coated black

Scale Cover:

AISI304L, straight line finish, Ra=45 ± 10

Cable Length:

10 ft (3 m)

Temperature:

Compensated:

14 °F to 104 °F (-10 °C to 40 °C)

Warranty:

Two-year limited

Approvals:

NTEP 06-010, Class III 5,000 d

Measurement Canada AM-5625

Load cell is cFMus approved

Approvals



Measurement
Canada
Approved



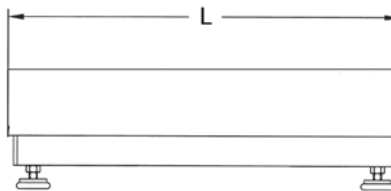
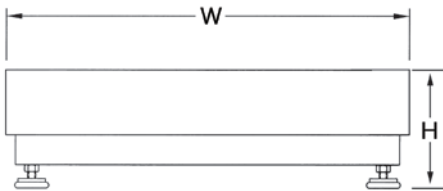
Part Number/Price

Part #	Capacity	Platform Dimensions (L × W × H)	Est. Weight	Price
93414	250 lb (125 kg)	30 × 30 × 8.75 in	300 lb	\$2,230.00
93415	500 lb (225 kg)	30 × 30 × 8.75 in	300 lb	\$2,230.00
93416	250 lb (125 kg)	36 × 36 × 8.75 in	330 lb	\$2,700.00
93417	500 lb (225 kg)	36 × 36 × 8.75 in	330 lb	\$2,700.00

Dimensions

BenchMark HD			
30 × 30 in			
H	8.75 in	W	30.00 in
L	30.00 in		
36 × 36 in			
H	8.75 in	W	36.00 in
L	36.00 in		

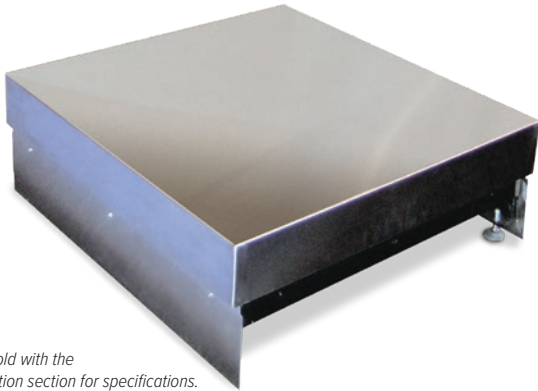
Note: 1 in = 25.4 mm




BenchMark® HD-1 Aviation

Heavy Duty Bench Scale

BENCH SCALES



 Ideal for aviation weighing.
A complete system can be sold with the
Tracer® AV2. Reference Aviation section for specifications.

Approvals



Measurement
Canada
Approved



Part Number/Price

Part #	Capacity	Platform Dimensions	Price
Consult	500 lb (225 kg)	W × D × 12 in	Consult

Note: Maximum size is up to 36in × 36in, height is always 12in
W × D supplied by customer

Standard Features

- Heavy-duty scale designed mild steel base construction with 304 stainless steel cover
- Polyurethane rubber leveling feet with stainless steel stems
- Load cell comes standard with DB-9 connector for connecting to Tracer AV2
- Front and back kick plates

Specifications

Load Cell, NTEP Certified:

IP67 aluminum, environmentally sealed

Output Impedance:

350 ohm

Maximum Overload:

200%

Overload Protection:

Five-point, independently adjusted

Cable Length:

10 ft (3 m)

Temperature:

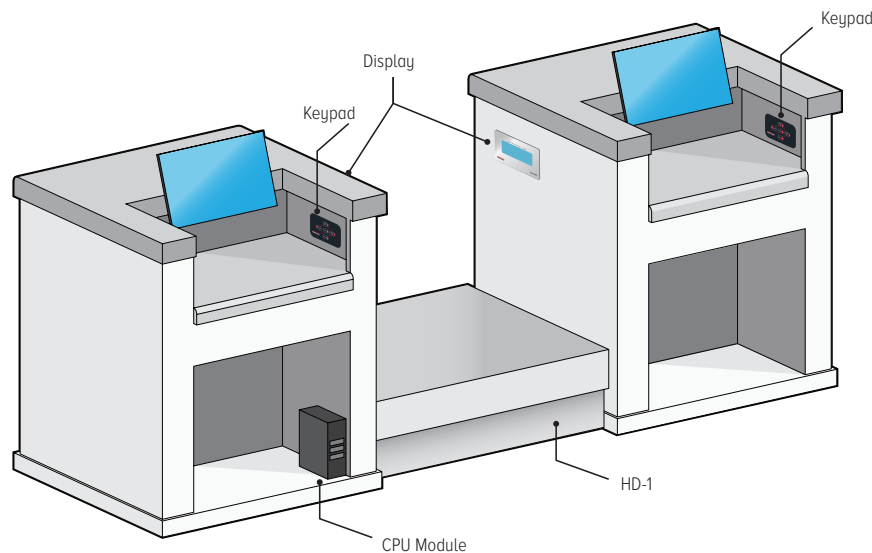
Compensated:
14 °F to 104 °F (-10 °C to 40 °C)

Warranty:

Two-year limited

Approvals:

NTEP 06-010, Class III 5,000 d
Measurement Canada AM-5625
Load cell is cFMus approved

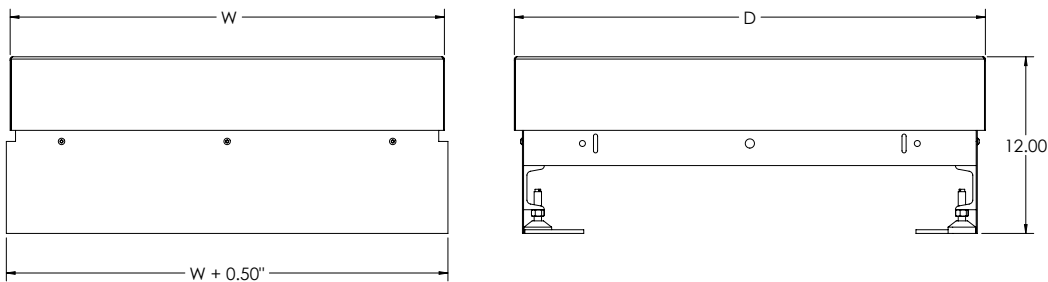
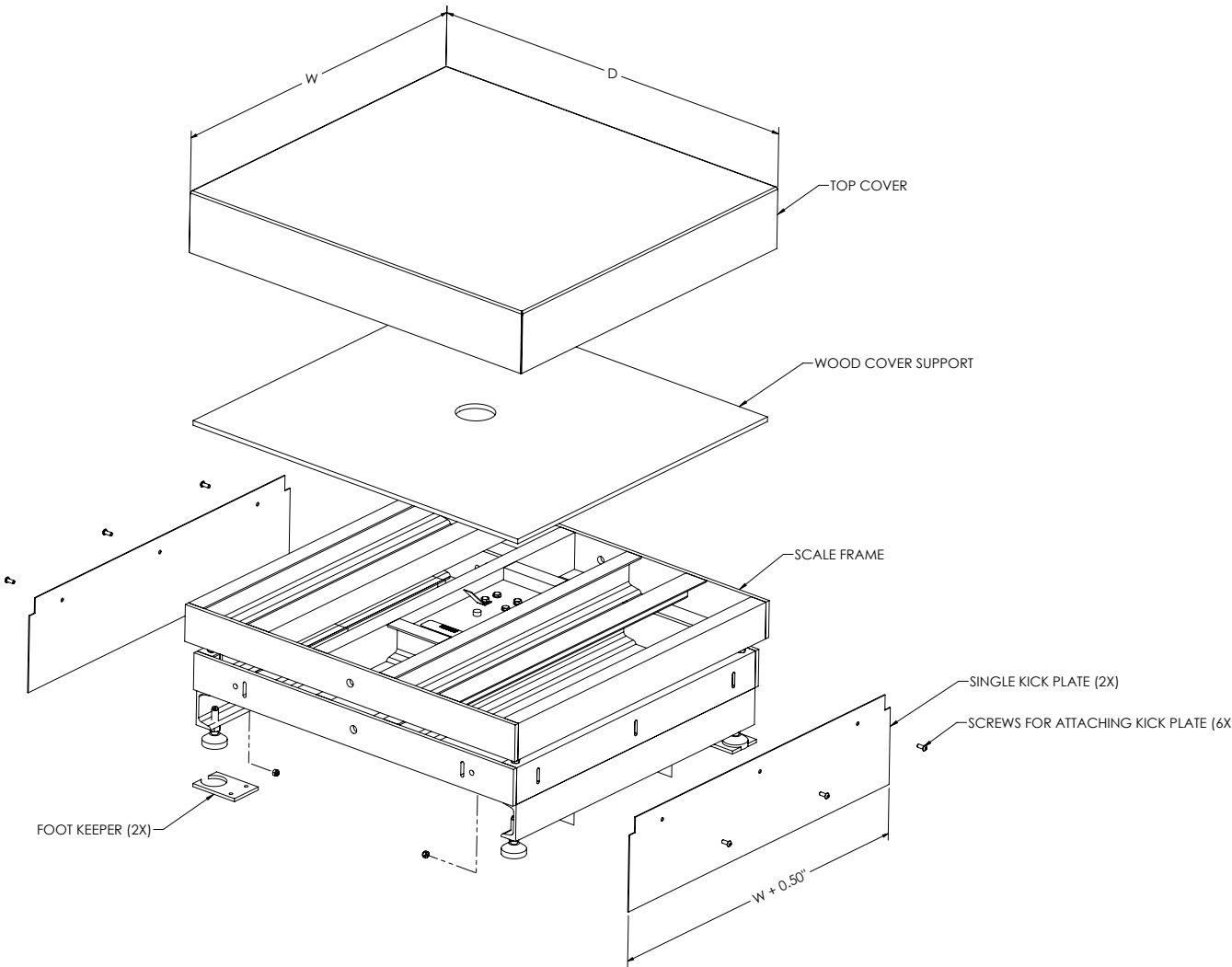


Baggage weighing system with Benchmark HD-1 and Tracer AV2Dual LCD Panel Mount Display, Dual keypad

BenchMark® HD-1 Aviation

Heavy Duty Bench Scale

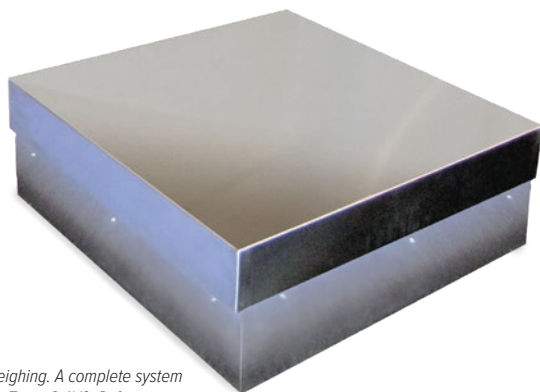
BENCH SCALES



BenchMark® HD-2 Aviation

Heavy Duty Bench Scale

BENCH SCALES



Ideal for aviation weighing. A complete system can be sold with the Tracer® AV2. Reference Aviation section for specifications.

Approvals



Measurement
Canada
Approved



Part Number/Price

Part #	Capacity	Platform Dimensions	Price
Consult	500 lb (225 kg)	W × D × 12 in	Consult

Note: Maximum size is up to 36 in × 36 in, height is always 12 in W × D supplied by customer.

Standard Features

- Heavy-duty scale designed mild steel base construction with 304 stainless steel cover
- Polyurethane rubber leveling feet with stainless steel stems
- Load cell comes standard with DB-9 connector for connecting to Tracer AV2
- Three-sided kick plate

Specifications

Load Cell, NTEP Certified:

IP67 aluminum, environmentally sealed

Output Impedance:

350 ohm

Maximum Overload:

200%

Overload Protection:

Five-point, independently adjusted

Cable Length:

10 ft (3 m)

Temperature:

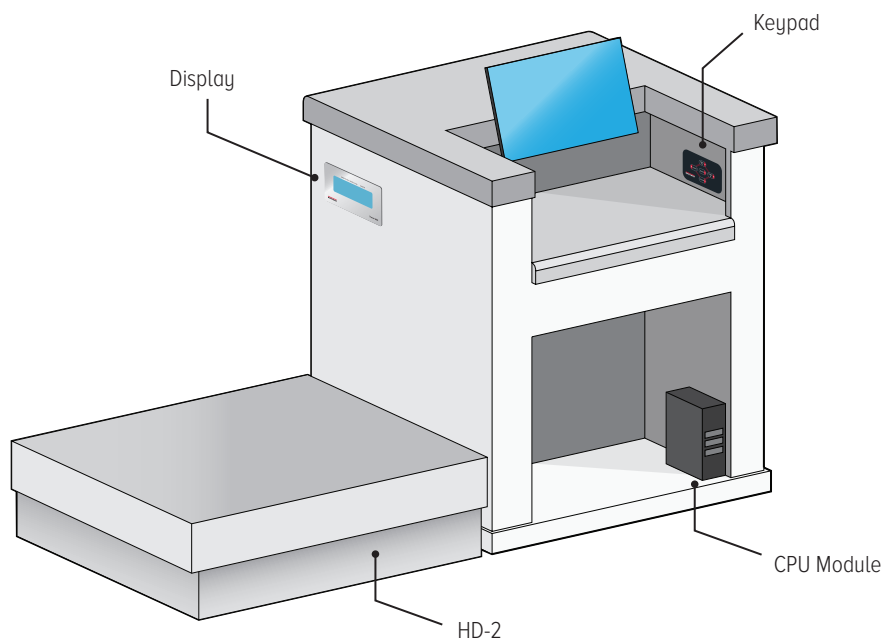
Compensated:
14 °F to 104 °F (-10 °C to 40 °C)

Warranty:

Two-year limited

Approvals:

NTEP 06-010, Class III 5,000 d
Measurement Canada AM-5625
Load cell is cFMus approved

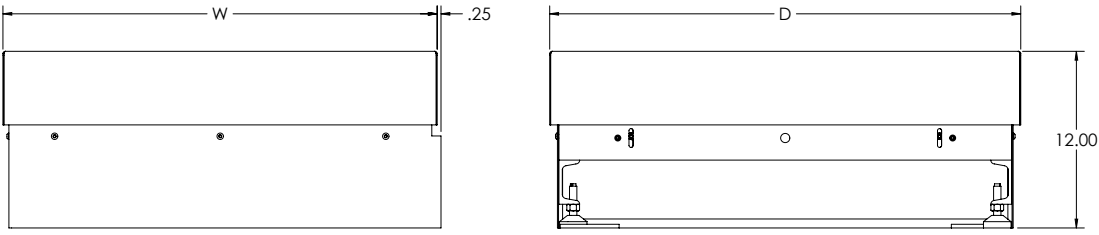
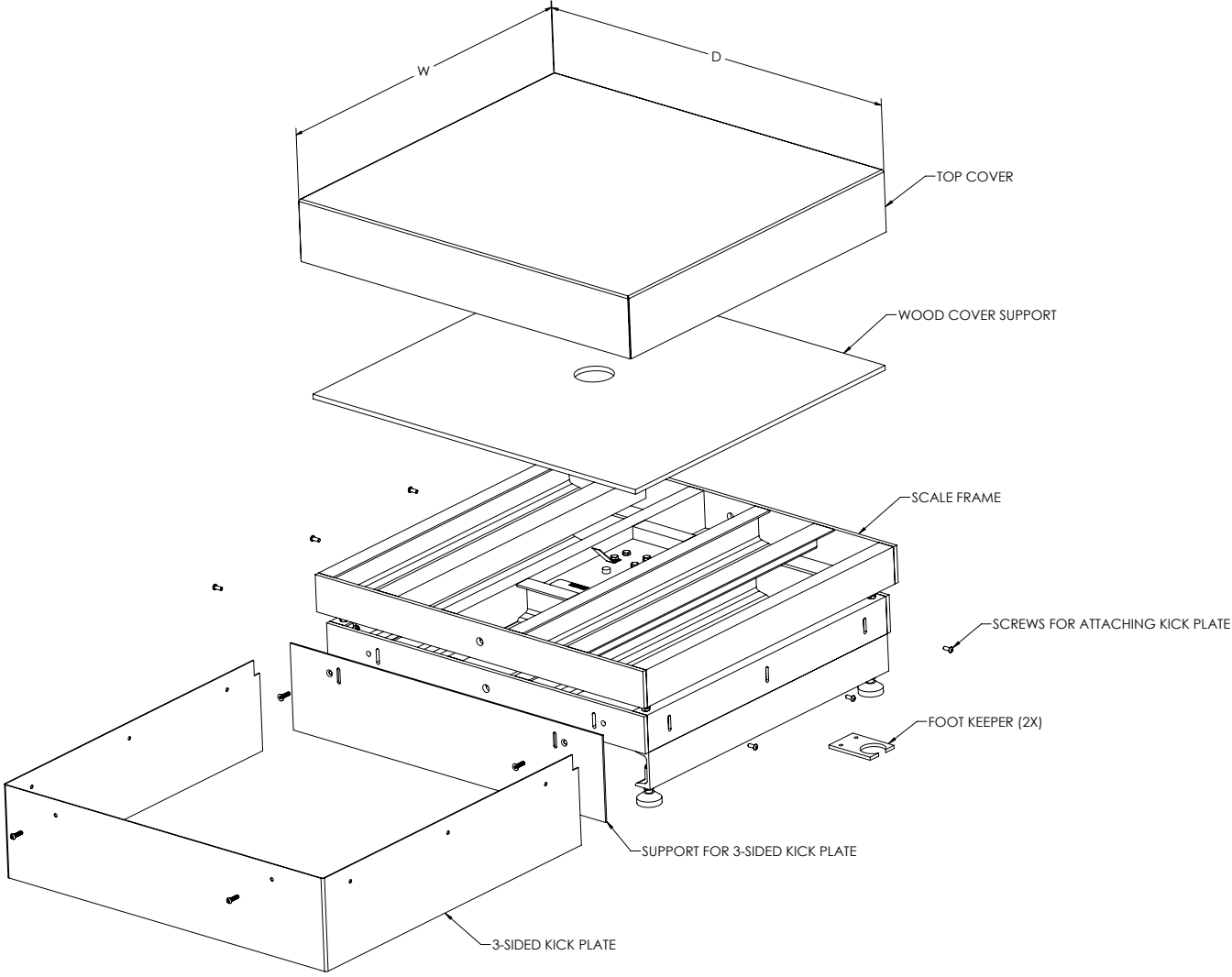


Baggage weighing system with Benchmark HD-2 and Tracer AV2 Single LCD Panel Mount Display, Single keypad

BenchMark® HD-2 Aviation

Heavy Duty Bench Scale

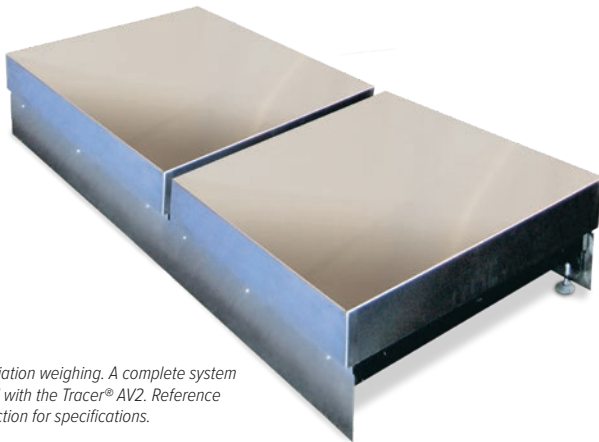
BENCH SCALES



BenchMark® HD-3 Aviation

Heavy Duty Bench Scale

BENCH SCALES



Ideal for aviation weighing. A complete system can be sold with the Tracer® AV2. Reference Aviation section for specifications.

Approvals



Measurement
Canada
Approved



Part Number/Price

Part #	Capacity	Platform Dimensions	Price
Consult	500 lb (225 kg)	W × D × 12 in	Consult

*Note: Maximum size is up to 36in × 36in, height is always 12in
W × D supplied by customer.*

Standard Features

- Two heavy-duty scales designed mild steel base construction with 304 stainless steel cover
- Polyurethane rubber leveling feet with stainless steel stems
- Load cell comes standard with DB-9 connector for connecting to Tracer AV2
- Front and back kick plates for two side-by-side scales

Specifications

Load Cell, NTEP Certified:

IP67 aluminum, environmentally sealed

Output Impedance:

350 ohm

Maximum Overload:

200%

Overload Protection:

Five-point, independently adjusted

Cable Length:

10 ft (3 m)

Temperature:

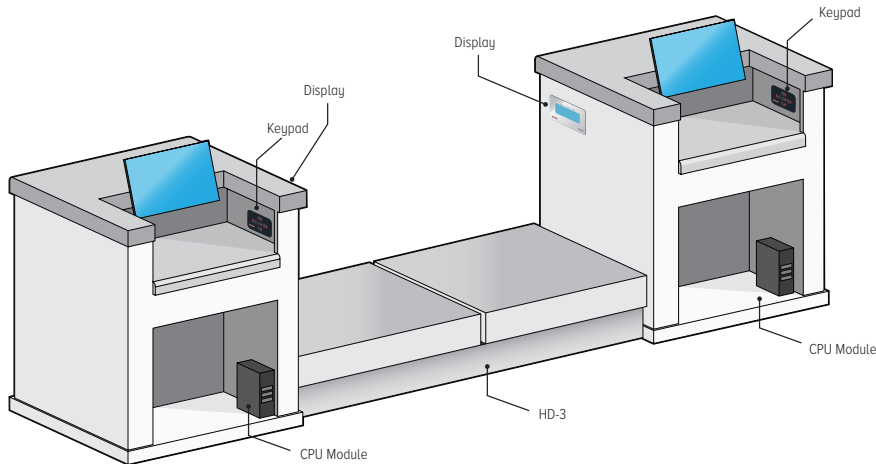
Compensated:
14 °F to 104 °F (-10 °C to 40 °C)

Warranty:

Two-year limited

Approvals:

NTEP 06-010, Class III 5,000 d
Measurement Canada AM-5625
Load cell is cFMus approved

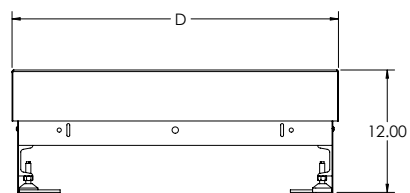
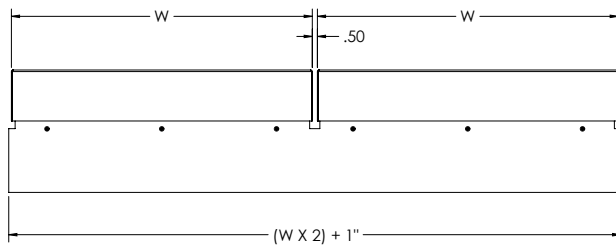
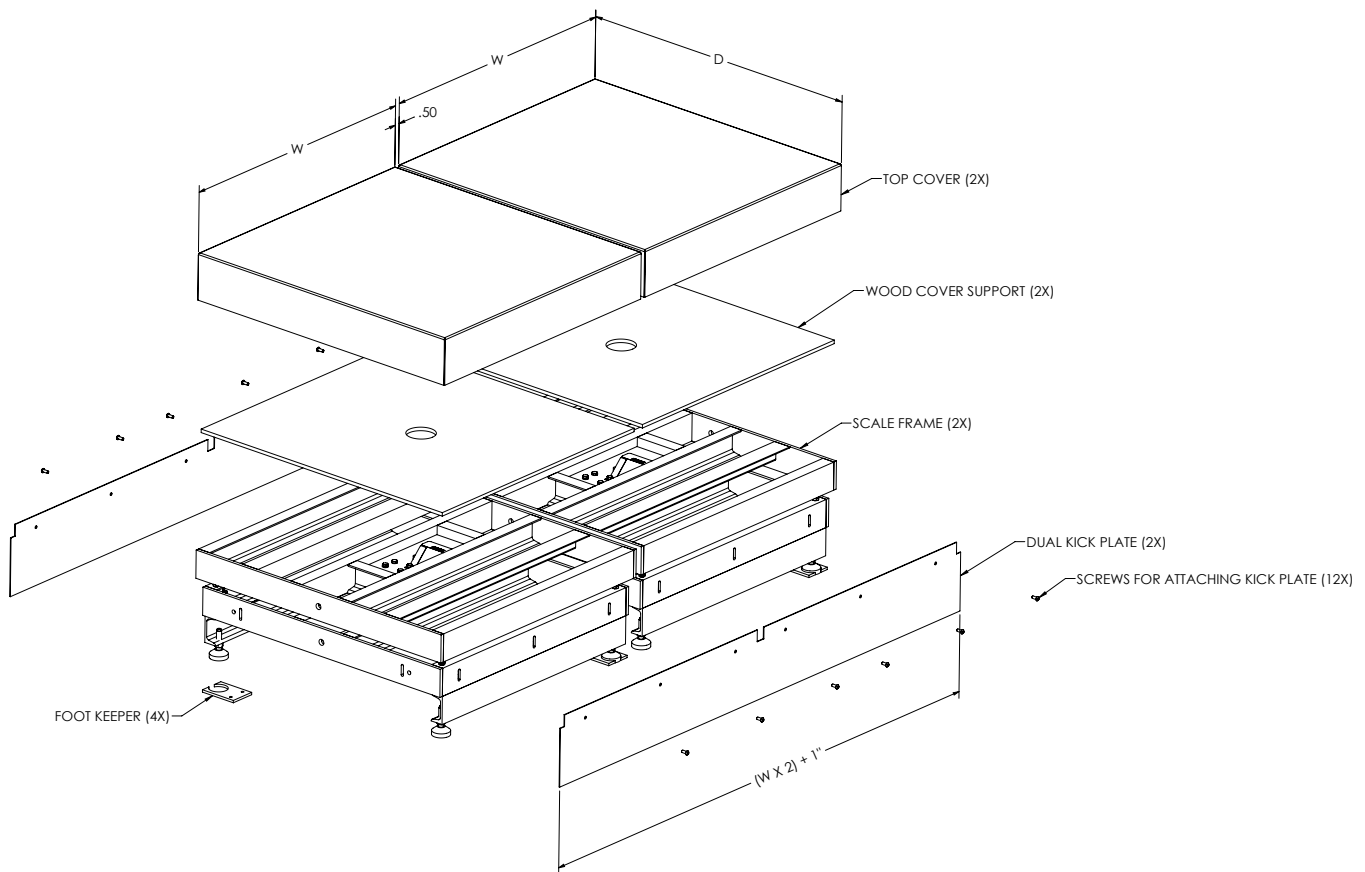


Baggage weighing system with Benchmark HD-3 and Tracer AV2 Single LCD Panel Mount Display, Single keypad

BenchMark® HD-3 Aviation

Heavy Duty Bench Scale

BENCH SCALES



BenchMark® HDP

Portable Heavy-Duty Bench Scale

BENCH SCALES



Standard Features

- Mild steel base construction
- 304 stainless steel cover
- Indicator stand for mounting 380 Synergy

Wheel model

- Polyurethane rubber leveling feet with stainless steel stems
- 8-inch diameter preformed rubber wheels with ball bearings

Caster model

- 3 1/2 in diameter preformed rubber casters, two fixed, two swivel with lock

Specifications

Load Cell, NTEP Certified:

IP67 aluminum, environmentally sealed

Output Impedance:

350 ohm

Maximum Overload:

200%

Overload Protection:

Five-point, independently adjusted

Scale Frame:

Mild steel powder-coated black

Scale Cover:

AISI304L, straight line finish, Ra=45 ± 10

Cable Length:

10 ft (3 m)

Temperature:

Compensated:

14 °F to 104 °F (-10 °C to 40 °C)

Warranty:

Two-year limited

Approvals:

NTEP 06-010, Class III 5,000 d
Measurement Canada AM-5625

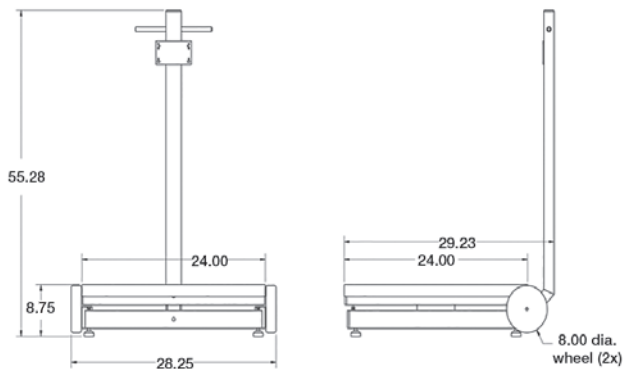
Approvals



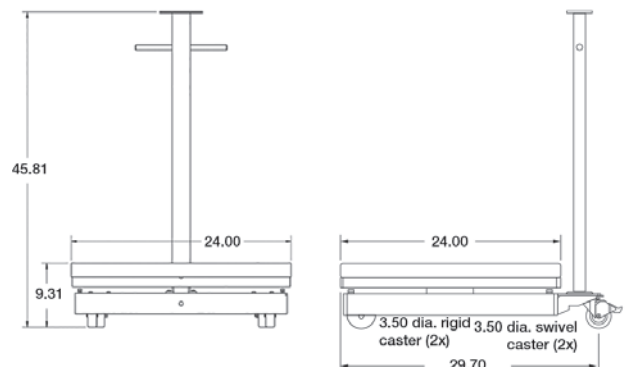
Measurement
Canada
Approved

Part Number/Price

Part #	Capacity	Platform Dimensions	Est. Weight	Price
Wheel Model				
97072	250 lb (125 kg)	24 × 24 × 8.75 in	275 lb	\$2,695.00
97073	500 lb (225 kg)	24 × 24 × 8.75 in	275 lb	\$2,695.00
Caster Model				
97074	250 lb (125 kg)	24 × 24 × 9.31 in	290 lb	\$2,695.00
97075	500 lb (225 kg)	24 × 24 × 9.31 in	290 lb	\$2,695.00



Wheel Model



Caster Model

Ishida iPC Series

Portable Bench Scale

BENCH SCALES



Standard Features

- Six-digit liquid crystal display (LCD)
- Powered by two D cell batteries (up to 500 hours of operation)
- Auto power-off function
- Low battery indicator
- Overload stops
- Batteries and AC adapter not included

Specifications

Display:

Six-digit (seven-segment), LCD
Character height: 1 in (25.4 mm)

Keyboard:

Zero, tare, on/off, unit (lb/kg)
NOTE: oz version only displays weight in oz

Power:

Two dry cell D type batteries (up to 500 hours) or AC adapter*
Auto power-off function (can be set to 60 min., 20 min., or off)

Temperature:

Operating: 23 °F to 104 °F (-5 °C to 40 °C)

Divisions (Auto Ranging):

30 lb
0.01 lb:
0 to 15 lb
0.02 lb: 15 to 30 lb
60 lb
0.02 lb: 0 to 30 lb
0.05 lb: 30 to 60 lb

Platter Size:

30 lb (15 kg): 11 × 11.5 in
60 lb (30 kg): 11 × 11.5 in

Warranty:

One-year limited

Approvals:

NTEP 02-139, Class III
30 lb 1,500 d; 60 lb 1,200 d
UL listed

Approvals



Part Number/Price

Part #	Capacity	Platform Dimensions	Est. Weight	Price
75457	30 lb (15 kg)	11 × 11.5 in	8 lb	\$325.00
75458	60 lb (30 kg)	11 × 11.5 in	8 lb	\$325.00

Options/Accessories

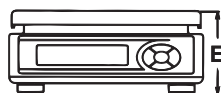
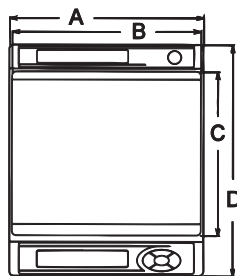
Part #	Description	Price
75739	Stainless steel platter cover (30 lb and 60 lb capacity)	\$29.00
75473 *	AC adapter	\$30.00

*National Recognized Test Laboratory certified adapter

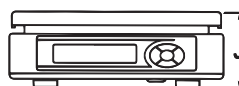
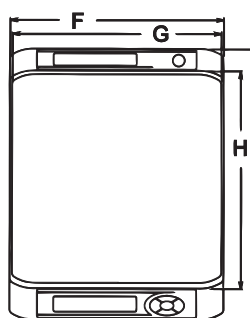
Dimensions

Ishida iPC Series			
A	9.30 in	F	11.30 in
B	9.10 in	G	11.00 in
C	7.80 in	H	11.50 in
D	11.10 in	I	14.30 in
E	3.90 in	J	4.00 in

Note: 1 in = 25.4 mm



iPC 9.1" x 7.8" platter



iPC 11" x 11.5" platter

Versa-portion®

Compact Scale

BENCH SCALES



Approvals



Measurement
Canada
Approved

Part Number/Price

Part #	Description	Capacity	Est. Weight	Price
115125	RLP-6S	6.00 × 0.002 lb	15 lb (6.3 kg)	\$475.00
115128	RLP-15S	15.00 × 0.005 lb	15 lb (6.3 kg)	\$475.00
115129	RLP-30S	30.00 × 0.01 lb	15 lb (6.3 kg)	\$475.00
115130	RLP-60S	60.00 × 0.02 lb	15 lb (6.3 kg)	\$475.00

Options/Accessories

Part #	Description	Price
108516	Rechargeable battery	\$50.00
108518	AC adapter 110-230 VAC, U.S. plug	\$50.00
129953	AC adapter, 110-230 VAC, Euro plug	\$55.00
115519	Additional operator guide	\$10.00

Standard Features

- Compact and easy to use
- IP68 water and dust resistant
- Stainless steel finish
- Removable weigh pan for quick and easy cleaning
- LED display
- AC adapter included
- Legal for Trade
- HACCP compliant

Options

- Rechargeable battery

Specifications

Display:

LED, six-digit

Capacity:

	Pound	Gram	Ounce
RLP-6S	6.0 × 0.002 lb	3,000 × 1 g	60.0 × 0.02 oz
RLP-15S	15.0 × 0.005 lb	6,000 × 2 g	150.0 × 0.05 oz
RLP-30S	30.0 × 0.01 lb	15,000 × 5 g	300.0 × 0.1 oz
RLP-60S	60.0 × 0.02 lb	30,000 × 10 g	600.0 × 0.2 oz

Display Indicators:

Ounces, grams, pounds, net, center of zero, battery usage

Keyboard:

Rezero, tare, on/off, unit

Resolution:

Internal: 90,000 count

Display: 3,000

Humidity:

15 to 85% RH

Temperature:

Operating: 14 °F to 104 °F (-10 °C to 40 °C)

Power Consumption:

18 W when using DC power, 3 W when using rechargeable battery

Battery life: 60 hours of continuous usage

Power Source:

AC 117/100 V, 240/230/220 V

DC 12 V/1.5 A, DC 6 V 5 Ah optional rechargeable battery

Calibration:

RLP-S: Grams

Overall Dimensions:

(L × W × H)

11.4 × 9.9 × 5.3 in

(290 × 252 × 135 mm)

Package Size:

(L × W × H)

14.8 × 13.3 × 9.6 in

(377 × 337 × 245 mm)

Platter Size:

9.3 × 7.8 in

(237 × 198.0 mm)

Warranty:

One-year limited

Approvals:

NTEP 10-068, Class III 3,000 d

Measurement Canada AM-5794



Standard Features

- Simple operation, easy to set up
- Large six-digit backlight LCD display with 1-inch (29 mm) characters protected by heavy-duty tempered glass
- Powered USB HID point of sale interface, kg model only
- Nine-pin RS-232 interface for use with SMA and NCI protocols
- Four AA alkaline battery operation for portability
- Gravitational compensation allows for adjustment of factory calibration to meet your local gravity setting, non-approved

Approvals



Measurement
Canada
Approved



Part Number/Price

Part #	Platform Capacity	Dimensions	Est. Weight	Price
187832	35 kg triple range	12 × 14 in	18 lb	\$775.00
195741	35 kg triple interval	12 × 14 in	18 lb	\$775.00
192361	70 lb dual range	12 × 14 in	18 lb	\$775.00
195742	70 lb dual interval	12 × 14 in	18 lb	\$775.00

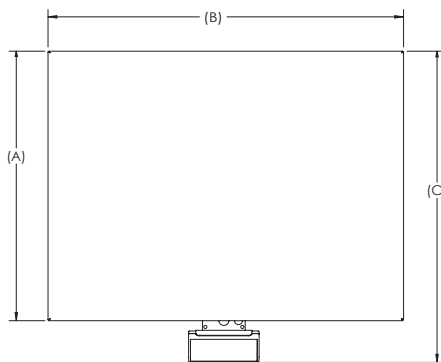
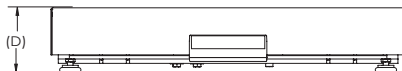
Options/Accessories

Part #	Description	Est. Weight	Price
174783	Column bracket and post (12 × 14 scale only)	2 lb	\$50.00
180901	Second customer display, BenchPro BP-P no keyboard with 68 in cable	4 lb	\$72.00
174784	Second remote operator display, BenchPro BP-P with 68 in cable	4 lb	\$88.00
183103	16 in (H) tabletop display post for use with second display, customer or remote operator	4 lb	\$215.00
178501	USB RS-232 serial adapter 3.28 ft cable	1 lb	\$60.00

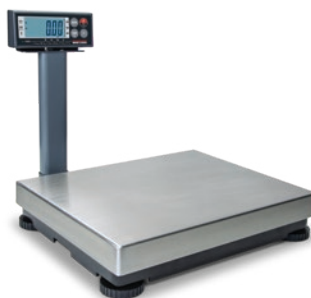
Dimensions

BenchPro BP-P			
A	12.00 in	C	14.50 in
B	14.00 in	D	2.70 in

Note: 1 in = 25.4 mm



BP-P shown with 183103 and 180901



Shown with 174783

Specifications

Power:

In-line power supply (included)

Input:

100 to 240 VAC, +10% -15%, 3-wire w/ground
Terminated with standard USA 3-prong plug

Output:

12 V at 0.1 Amps DC minimum

Frequency:

50/60 Hz ± 3 Hz

Power supply approvals:

UL, CE, EN, CUL

Battery Type:

Four AA alkaline batteries, 6 V,
with low battery indication at 4.3 volts

Battery Life:

50 to 250 hrs depending on backlight and
auto-shutdown settings

Excitation:

3.0 mV/V

Resolution:

Internal: 500,000 counts

USB HID:

USB 2.0 full speed; Vendor ID: 1C19;
Product ID: 0002

Divisions (multi-range):

kg triple range:

0 to 5 kg × 0.001 kg
0 to 10 kg × 0.002 kg
0 to 35 kg × 0.01 kg

lb/oz dual range:

0 to 7 lb × 0.05 oz
0 to 70 lb × 0.2 oz

Divisions (Multi-Interval):

kg triple interval:

0 to 5 kg × 0.001 kg
5 to 10 kg × 0.002 kg
10 to 35 kg × 0.01 kg

Lb/oz dual interval:

0 to 7 lb × 0.05 oz
7 to 70 lb × 0.2 oz

Material:

Display: ABS plastic housing
Scale base: Die-cast aluminum load bridge and
base housing with stainless steel weight platter

Dynamic Response:

Response time for stable weight:
0 to 1,000 d, 1,000 ms, maximum mean average
1,000 d+, 1,500 ms, maximum mean average

Overload Protection:

Corner and center overload protection

Display:

Large six-digit backlight LCD display with 1-inch
(29 mm) Characters protected by heavy-duty
tempered glass

Annunciators:

Six: zero, gross/brutto, net, W1/W2/W3 multi-range

Keys/Buttons:

Three: units, on/off, F1
(Tare is not applicable)
Minimum key press life of 500,000 cycles

RS-232 Cable (Included):

10 ft DB 9-pin male to female, straight pass-through

USB Cable (Included):

46 in (1,168 mm) A/B type USB cable

Warranty:

Two-year limited

Approvals:

NTEP 17-002
Canada Weights and Measures: AM - 6050
CE Marked

BenchPro™ BP-S

Shipping Bench Scale

BENCH SCALES



Approvals



Measurement
Canada
Approved



Part Number/Price

Part #	Platform Capacity	Dimensions	Est. Weight	Price
174879 *	150 × 0.05 lb (75 × 0.02 kg)	12 × 14 in	17 lb	\$775.00
182993	150 × 0.05 lb (75 × 0.02 kg)	12 × 16 in	31 lb	\$1,285.00
182391	100 × 0.02 lb (50 × 0.01 kg)	18 × 18 in	63 lb	\$1,740.00
182378	150 × 0.05 lb (75 × 0.02 kg)	18 × 18 in	63 lb	\$1,740.00
182382	300 × 0.1 lb (150 × 0.05 kg)	18 × 18 in	63 lb	\$1,740.00
182395	300 × 0.1 lb (150 × 0.05 kg)	20 × 20 in	76 lb	\$1,950.00
182399	300 × 0.1 lb (150 × 0.05 kg)	24 × 24 in	131 lb	\$2,150.00

* Battery or DC power

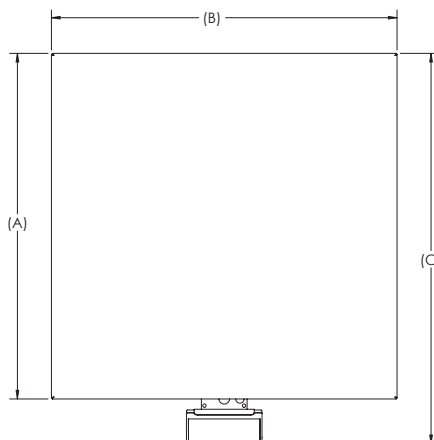
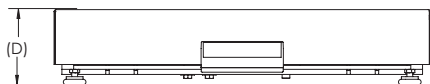
Options/Accessories

Part #	Description	Est. Weight	Price
174783	Column bracket and post (12 × 14 scale only)	2 lb	\$50.00
180901	Second customer display, BenchPro BP-S no keyboard with 68 in cable	4 lb	\$72.00
174784	Second remote operator display, BenchPro BP-S with 68 in cable	4 lb	\$88.00
183103	16 in (H) tabletop display post for use with second display, customer or remote operator	4 lb	\$215.00
178501	USB RS-232 serial adapter	1 lb	\$60.00

Dimensions

	A	B	C	D
12 × 14 in	12.00 in	14.00 in	14.50 in	2.70 in
12 × 16 in	12.00 in	16.00 in	15.30 in	4.32 in
18 × 18 in	18.00 in	18.00 in	21.10 in	4.30 in
20 × 20 in	20.00 in	20.00 in	23.10 in	4.30 in
24 × 24 in	24.00 in	24.00 in	27.10 in	4.30 in

Note: 1 in = 25.4 mm



Standard Features

- Simple operation, easy to set up
- Large six-digit backlight LCD display with 1-inch (29 mm) characters protected by heavy-duty tempered glass
- Powered USB HID point of sale interface
- Nine-pin RS-232 interface for use with SMA and NCI protocols
- Four AA alkaline battery operation for portability
- Gravitational compensation allows for adjustment of factory calibration to meet your local gravity setting, non-approved
- Compatible with FedEx Ship Manager® and UPS Worldship®

Specifications

Power:

In-line power supply (included)

Input:

100 to 240 VAC, +10% -15%, 3-wire w/ground
Terminated with standard USA 3-prong plug

Battery:

(12 × 14 in scale only)
Four AA alkaline batteries,
6 V, with low battery indication at 4.3 volts

Power Consumption:

12 V at 0.1 amps DC minimum

Frequency:

50/60 Hz ± 3 Hz

Battery Life:

50 to 250 hrs depending on backlight and auto-shutdown settings

Excitation:

3.0 mV/V

Resolution:

Internal: 500,000 counts

USB HID:

USB 2.0 full speed; Vendor ID: 1C19;
Product ID: 0002

RS-232 Cable (Included):

10 ft DB 9-pin male to female, straight pass-through

USB Cable (Included):

46 in (1,168 mm) A/B type USB cable

Dynamic Response:

Response time for stable weight:
0 to 1,000 d, 1,000 ms, maximum mean average
1,000 d +, 1,500 ms, maximum mean average

Overload Protection:

Corner and center overload protection

Annunciators:

Six: zero, gross/brutto, net, W1/W2/W3 multi-range

Display:

Large six-digit backlight LCD display with 1-inch (29 mm)
Characters protected by heavy-duty tempered glass

Keys/Buttons:

Four: units, tare, on/off, F1
Minimum key press life of 500,000 cycles

Material:

Display: ABS plastic housing
Scale base: Powder coat painted mild steel
base plate and load bridge with stainless steel weight platter
BP-S 12 × 14 in: Die-cast aluminum load bridge and base housing with stainless steel weight platter

Warranty:

Two-year limited

Approvals:

NTEP 17-002
Canada Weights and Measures: AM-6050
CE Marked



Approvals



Measurement
Canada
Approved



Part Number/Price

Part #	Capacity	Dimensions	Est. Weight	Price
182995	150 × 0.05 lb (75 × 0.02 kg)	12 × 16 in	37 lb	\$1,545.00
182393	100 × 0.02 lb (50 × 0.01 kg)	18 × 18 in	73 lb	\$2,140.00
182380	150 × 0.05 lb (75 × 0.02 kg)	18 × 18 in	73 lb	\$2,140.00
182384	300 × 0.1 lb (150 × 0.05 kg)	18 × 18 in	73 lb	\$2,140.00
182397	300 × 0.1 lb (150 × 0.05 kg)	20 × 20 in	88 lb	\$2,375.00
182401	300 × 0.1 lb (150 × 0.05 kg)	24 × 24 in	131 lb	\$2,615.00

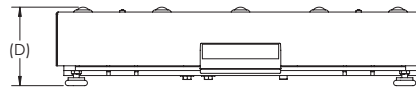
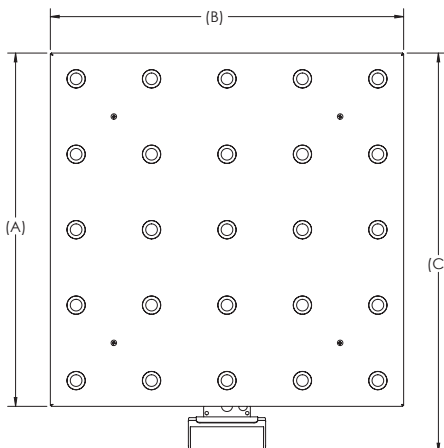
Options/Accessories

Part #	Description	Est. Weight	Price
180901	Second customer display, BenchPro BP-SB no keyboard with 68 in cable	4 lb	\$72.00
174784	Second remote operator display, BenchPro BP-SB with 68 in cable	4 lb	\$88.00
183103	16 in (H) tabletop display post for use with second display, customer or remote operator	4 lb	\$215.00
178501	USB RS-232 serial adapter	1 lb	\$60.00

Dimensions

	A	B	C	D
12 × 16 in	12.00 in	16.00 in	15.30 in	4.32 in
18 × 18 in	18.00 in	18.00 in	21.10 in	4.86 in
20 × 20 in	20.00 in	20.00 in	23.10 in	4.86 in
24 × 24 in	24.00 in	24.00 in	27.10 in	4.86 in

Note: 1 in = 25.4 mm



Standard Features

- Simple operation, easy to set up
- Large six-digit backlight LCD display with 1-inch (29 mm) characters protected by heavy-duty tempered glass
- Powered USB HID point of sale interface
- Nine-pin RS-232 interface for use with SMA and NCI protocols
- Gravitational compensation allows for adjustment of factory calibration to meet your local gravity setting, non-approved
- Compatible with FedEx Ship Manager® and UPS Worldship®

Specifications

Power:

In-line power supply (included)

Input:

100 to 240 VAC, +10% -15%, 3-wire w/ground
Terminated with standard USA 3-prong plug

Output:

12 V at 0.1 amps DC minimum

Frequency:

50/60 Hz ±3 Hz

Approvals:

UL, CE, EN, CUL

Excitation:

3.0 mV/V

Resolution:

Internal: 500,000 counts

USB HID:

USB 2.0 full speed; Vendor ID: 1C19;
Product ID: 0002

RS-232 Cable (Included):

10 ft DB 9-pin male to female, straight pass-through

USB Cable (Included):

46 in (1,168 mm) A/B type USB cable

Dynamic Response:

Response time for stable weight:
0 to 1,000 d, 1,000 ms, maximum mean average
1,000 d +, 1,500 ms, maximum mean average

Overload Protection:

Corner and center overload protection

Annunciators:

Six: zero, gross/brutto, net, W1/W2/W3 multi-range

Display:

Large six-digit backlight LCD display with 1-inch (29 mm) Characters protected by heavy-duty tempered glass

Keys/Buttons:

Four: units, tare, on/off, F1
Minimum key press life of 500,000 cycles

Material:

Display: A BS plastic housing
Scale base: Powder coat painted mild steel base plate and load bridge.
Carbon steel ball with carbon steel zinc-plated housing. Stainless steel shroud.

Warranty:

Two-year limited

Approvals:

NTEP 17-002
Canada Weights and Measures: AM - 6050
CE Marked

BenchPro™ BP-SR

Shipping Bench Scale with Roller Conveyor

BENCH SCALES



Approvals



Measurement
Canada
Approved



Part Number/Price

Part #	Platform Capacity	Dimensions	Est. Weight	Price
182996	150 × 0.05 lb (75 × 0.02 kg)	12 × 16 in	41 lb	\$1,460.00
182394	100 × 0.02 lb (50 × 0.01 kg)	18 × 18 in	77 lb	\$1,925.00
182381	150 × 0.05 lb (75 × 0.02 kg)	18 × 18 in	77 lb	\$1,925.00
182386	300 × 0.1 lb (150 × 0.05 kg)	18 × 18 in	77 lb	\$1,925.00
182398	300 × 0.1 lb (150 × 0.05 kg)	20 × 20 in	94 lb	\$2,065.00
182402	300 × 0.1 lb (150 × 0.05 kg)	24 × 24 in	131 lb	\$2,265.00

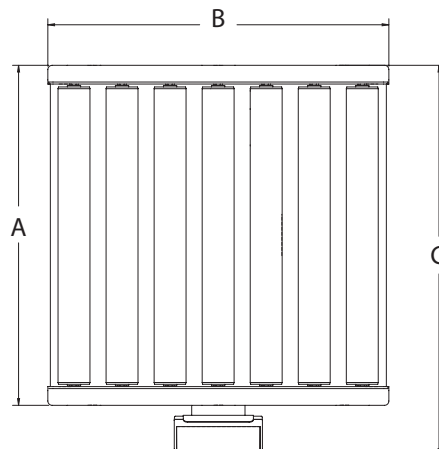
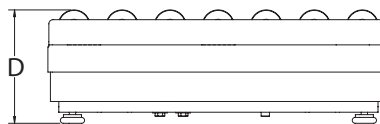
Options/Accessories

Part #	Description	Est. Weight	Price
180901	Second customer display, BenchPro BP-SR no keyboard with 68 in cable	4 lb	\$72.00
174784	Second remote operator display, BenchPro BP-SR with 68 in cable	4 lb	\$88.00
183103	16 in (H) tabletop display post for use with second display, customer or remote operator	4 lb	\$215.00
178501	USB RS-232 serial adapter	1 lb	\$60.00

Dimensions

	A	B	C	D
12 × 16 in	12.00 in	16.00 in	15.30 in	5.95 in
18 × 18 in	18.00 in	18.00 in	21.10 in	6.50 in
20 × 20 in	20.00 in	20.00 in	23.10 in	6.50 in
24 × 24 in	24.00 in	24.00 in	27.10 in	6.50 in

Note: 1 in = 25.4 mm



Standard Features

- Simple operation, easy to set up
- Large six-digit backlight LCD display with 1-inch (29-mm) characters protected by heavy-duty tempered glass
- Powered USB HID point of sale interface
- Nine-pin RS-232 interface for use with SMA and NCI protocols
- Gravitational compensation allows for adjustment of factory calibration to meet your local gravity setting, non-approved
- Compatible with FedEx Ship Manager® and UPS Worldship®

Specifications

Power:

In-line power supply (included)
Input: 100 to 240 VAC, +10% -15%, 3-wire w/ground
Terminated with standard USA 3-prong plug
Output: 12 V at 0.1 Amps DC minimum
Frequency: 50/60 Hz ± 3 Hz, standard
Approvals: UL, CE, EN, CUL

Excitation:

3.0 mV/V

Resolution:

Internal: 500,000 counts

USB HID:

USB 2.0 full speed; Vendor ID: 1C19;
Product ID: 0002

RS-232 Cable (Included):

10 ft DB 9-pin male to female, straight pass-through

USB Cable (Included):

46 in (1,168 mm) A/B type USB cable

Dynamic Response:

Response time for stable weight:
0 to 1,000 d, 1,000 ms, maximum mean average
1,000 d +, 1,500 ms, maximum mean average

Overload Protection:

Corner and center overload protection

Annunciators:

Six: zero, gross/brutto, net, W1/W2/W3 multi-range

Display:

Large six-digit backlight LCD display with 1-inch (29 mm) Characters protected by heavy-duty tempered glass

Keys/Buttons:

Four: units, tare, on/off, F1
Minimum key press life of 500,000 cycles

Material:

Display: ABS plastic housing
Scale base: Powder coat painted mild steel
base plate and load bridge with stainless steel
roller conveyor

Warranty:

Two-year limited

Approvals:

NTEP 17-002
Canada Weights and Measures: AM - 6050
CE Marked

BenchMark® MSC-10

Mobile Scale Cart

BENCH SCALES



Standard Features

- Two swivel, locking casters and two rigid casters
- Adjustable height with telescoping tube designed legs
- 18-inch indicator stand for mounting CW-90/90X, 480/480 Plus, 482/482 Plus, 680/682 Synergy, 380/380X Synergy

Specifications

Capacity:
1,000 lb (500 kg) maximum

Warranty:
One-year limited

Part Number/Price

Part #	Description	Cart Dimensions (L × W × H)	Est. Weight	Price
Mild Steel				
190201	Designed for 12 × 18 in Benchmark MS scale	25 × 14 × 41.89 to 51.89 in (22.78 to 32.78 in*)	70 lb	\$1,400.00
190202	Designed for 18 × 18 in Benchmark MS scale	25 × 20 × 41.89 to 51.89 in (22.78 to 32.78 in*)	83 lb	\$1,435.00
190203	Designed for 18 × 24 in Benchmark MS scale	31 × 20 × 41.89 to 51.89 in (22.78 to 32.78 in*)	93 lb	\$1,470.00
190204	Designed for 24 × 24 in Benchmark MS scale	31 × 26 × 41.89 to 51.89 in (22.78 to 32.78 in*)	101 lb	\$1,500.00
Stainless Steel				
190205	Designed for 12 × 18 in Benchmark SS and Benchmark HE scale	25 × 14 × 41.89 to 51.89 in (22.78 to 32.78 in*)	70 lb	\$1,755.00
190206	Designed for 18 × 18 in Benchmark SS and Benchmark HE scale	25 × 20 × 41.89 to 51.89 in (22.78 to 32.78 in*)	83 lb	\$1,805.00
190207	Designed for 18 × 24 in Benchmark SS and Benchmark HE scale	31 × 20 × 41.89 to 51.89 in (22.78 to 32.78 in*)	93 lb	\$1,855.00
190209	Designed for 24 × 24 in Benchmark SS and Benchmark HE scale	31 × 26 × 41.89 to 51.89 in (22.78 to 32.78 in*)	101 lb	\$1,905.00

*Height of cart without indicator stand

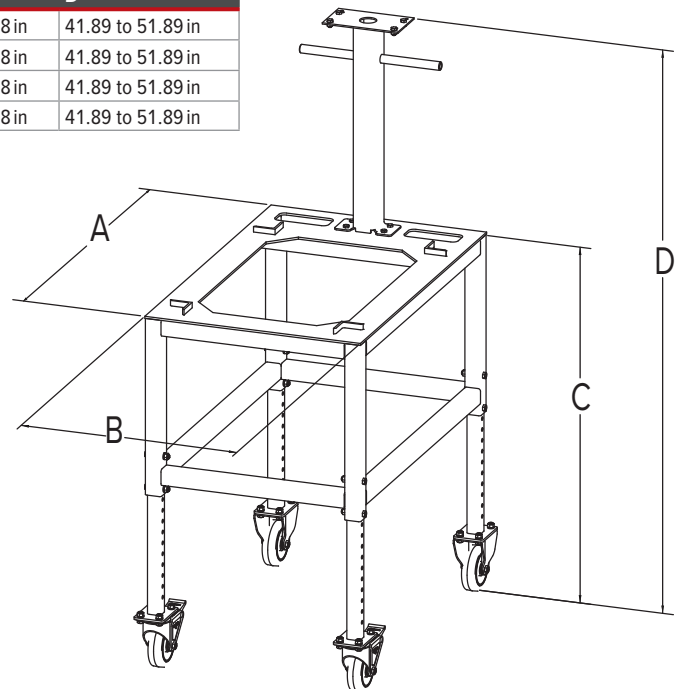
Wheels on standard carts are not conductive. If the end user plans to use the cart with an IS indicator, they will need a custom cart quoted with conductive wheels.

Cart not compatible with HE-X. See MSC-40.

Dimensions

	A	B	C	D
Designed for 12 × 18 in scale	25.00 in	14.00 in	22.78 to 32.78 in	41.89 to 51.89 in
Designed for 18 × 18 in scale	25.00 in	20.00 in	22.78 to 32.78 in	41.89 to 51.89 in
Designed for 18 × 24 in scale	31.00 in	20.00 in	22.78 to 32.78 in	41.89 to 51.89 in
Designed for 24 × 24 in scale	31.00 in	26.00 in	22.78 to 32.78 in	41.89 to 51.89 in

Note: 1 in = 25.4 mm



BenchMark® MSC-20

Mobile Scale Cart

BENCH SCALES



Standard Features

- Two swivel, locking casters and two rigid casters
- Designed to easily transport counting scale and secondary scale

Specifications

Capacity:

Lower base frame: 1,000 lb (500 kg) maximum
Upper base frame: 50 lb (25 kg) maximum

Warranty:

One-year limited

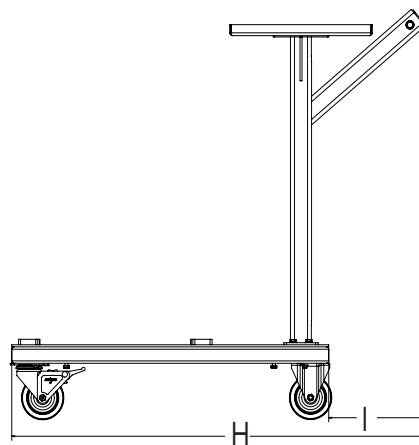
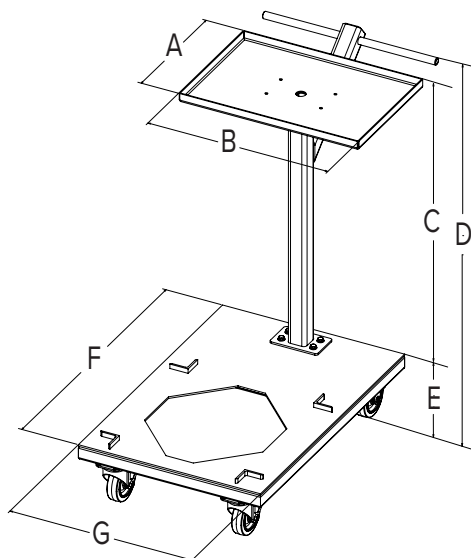
Part Number/Price

Part #	Description	Est. Weight	Price
Mild Steel			
197502	Designed for 12 × 18 in Benchmark MS scale	85 lb	\$1,495.00
197503	Designed for 18 × 18 in Benchmark MS scale	85 lb	\$1,520.00
197504	Designed for 18 × 24 in Benchmark MS scale	88 lb	\$1,545.00
197505	Designed for 24 × 24 in Benchmark MS scale	96 lb	\$1,570.00
Stainless Steel			
197506	Designed for 12 × 18 in Benchmark SS and Benchmark HE scale	90 lb	\$2,125.00
197507	Designed for 18 × 18 in Benchmark SS and Benchmark HE scale	90 lb	\$2,145.00
197508	Designed for 18 × 24 in Benchmark SS and Benchmark HE scale	93 lb	\$2,170.00
197509	Designed for 24 × 24 in Benchmark SS and Benchmark HE scale	101 lb	\$2,200.00

Dimensions

	A	B	C	D	E	F	G	H	I
Designed for 12 × 18 in scale	19.50 in	13.25 in	29.18 in	36.00 in	6.81 in	30.00 in	20.00 in	39.00 in	9.00 in
Designed for 18 × 18 in scale	19.50 in	13.25 in	29.18 in	36.00 in	6.81 in	30.00 in	20.00 in	39.00 in	9.00 in
Designed for 18 × 24 in scale	19.50 in	13.25 in	29.18 in	36.00 in	6.81 in	35.00 in	20.00 in	44.00 in	9.00 in
Designed for 24 × 24 in scale	19.50 in	13.25 in	29.18 in	36.00 in	6.81 in	35.00 in	26.00 in	44.00 in	9.00 in

Note: 1 in = 25.4 mm





Standard Features

- Two swivel, locking casters and two rigid casters
- Indicator stand for mounting CW-90/90X, 480/480Plus, 482/482Plus, 680/682 Synergy, 380/380X Synergy

Specifications

Capacity:
1,000 lb (500 kg) maximum

Warranty:
One-year limited

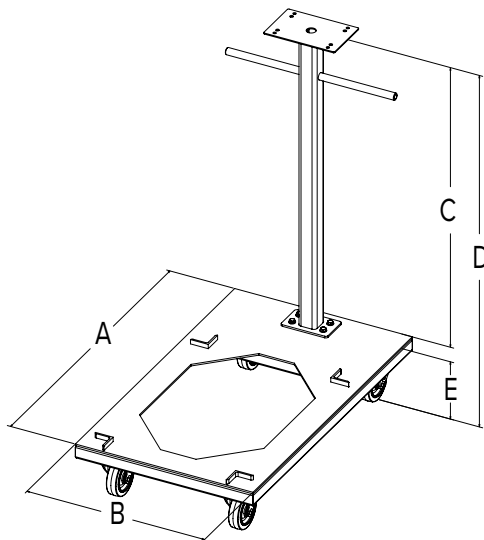
Part Number/Price

Part #	Description	Est. Weight	Price
Mild Steel			
197510	Designed for 12 × 18 Benchmark MS scale	67 lb	\$1,495.00
197511	Designed for 18 × 18 Benchmark MS scale	67 lb	\$1,520.00
197512	Designed for 18 × 24 Benchmark MS scale	70 lb	\$1,545.00
197513	Designed for 24 × 24 Benchmark MS scale	78 lb	\$1,570.00
Stainless Steel			
197514	Designed for 12 × 18 Benchmark SS and Benchmark HE scale	72 lb	\$2,125.00
197515	Designed for 18 × 18 Benchmark SS and Benchmark HE scale	72 lb	\$2,145.00
197516	Designed for 18 × 24 Benchmark SS and Benchmark HE scale	75 lb	\$2,170.00
197517	Designed for 24 × 24 Benchmark SS and Benchmark HE scale	83 lb	\$2,200.00

Dimensions

	A	B	C	D	E
Designed for 12 × 18 scale	30.00 in	20.00 in	34.25 in	41.00 in	6.81 in
Designed for 18 × 18 scale	30.00 in	20.00 in	34.25 in	41.00 in	6.81 in
Designed for 18 × 24 scale	35.00 in	20.00 in	34.25 in	41.00 in	6.81 in
Designed for 24 × 24 scale	35.00 in	26.00 in	34.25 in	41.00 in	6.81 in

Note: 1 in = 25.4 mm



BenchMark® MSC-40

Mobile Scale Cart

BENCH SCALES



Standard Features

- Two swivel, locking casters and two rigid casters
- Rugged washdown design meets Sanitary Design Principles

Specifications

Capacity:
1,000 lb (500 kg) maximum

Warranty:
One-year limited

Part Number/Price

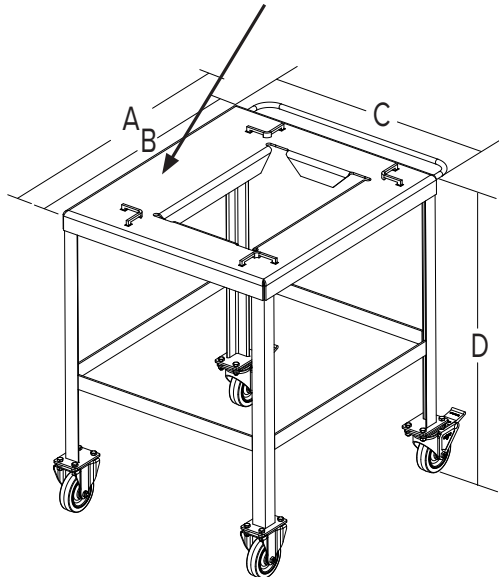
Part #	Description	Est. Weight	Price
Stainless Steel			
197518	Designed for 12 × 18 in Benchmark HE-X scale	62 lb	\$1,975.00
197519	Designed for 18 × 18 in Benchmark HE-X scale	62 lb	\$2,085.00
197520	Designed for 18 × 24 in Benchmark HE-X scale	69 lb	\$2,195.00
197521	Designed for 24 × 24 in Benchmark HE-X scale	79 lb	\$2,305.00

Dimensions

	A	B	C	D
Designed for 12 × 18 in scale	24.75 in	21.00 in	17.88 in	32.00 in
Designed for 18 × 18 in scale	24.75 in	21.00 in	24.00 in	32.00 in
Designed for 18 × 24 in scale	30.75 in	27.00 in	24.00 in	32.00 in
Designed for 24 × 24 in scale	30.75 in	27.00 in	30.00 in	32.00 in

Note: 1 in = 25.4 mm

Note: This side of cart is larger to accommodate BenchMark HE-X with indicator column



Bench Scale Ball Transfer and Roller Conveyor

1. Rice Lake Weighing Systems model number or part number of bench scale _____
2. Dimensions of scale: _____ in L × _____ in W
3. Capacity of scale: _____ lb
4. Dimensions of the smallest box/container to be used with the scale: _____ in L × _____ in W

Ball Transfer

5. Construction of ball transfer
 - ☐ Steel ball, steel housing zinc finish
 - ☐ Stainless steel ball, steel housing zinc finish
 - ☐ Stainless steel ball, stainless steel housing
6. Center-to-center ball dimension, if known:



Ball Transfer with Shroud

5. Construction of ball transfer
 - ☐ Steel ball, steel housing zinc finish
 - ☐ Stainless steel ball, stainless steel housing
6. Center-to-center ball dimension, if known:



Roller Conveyor

8. Roller diameter, if known:
9. Center-to-center dimension, if known:
10. Construction of rollers
 - ☐ Plain steel
 - ☐ Galvanized steel
 - ☐ Aluminum
 - ☐ Stainless steel
7. Direction of roller conveyor, if platform is rectangular shaped (i.e., 18 × 24 in scale, please tell us if the rollers should be 18 in or 24 in long)



Bench Scale Columns

Part Number/Price

Part #	Description	Price
112044	12 in column for IQ plus® 210, CW-90, CW-90X, 480/482 Legend Series, 380/380X Synergy Series, 680/682 Synergy Series	\$145.00
112045	18 in column for IQ plus® 210, CW-90, CW-90X, 480/482 Legend Series, 380/380X Synergy Series, 680/682 Synergy Series	\$195.00
196363	12 in column for 882IS/882IS Plus with battery	\$225.00
196364	18 in column for 882IS/882IS Plus with battery	\$275.00
197482	12 in column for 882IS/882IS Plus with power supply (Note: Power supply does not mount to column)	\$165.00
197484	18 in column for 882IS/882IS Plus with power supply (Note: Power supply does not mount to column)	\$215.00
64576	Attachment bracket for IQ plus® 210, CW-90, CW-90X, 480/482 Legend Series, 380/380X Synergy Series, 680/682 Synergy Series	\$100.00
216970	12 in column for 381 Synergy Indicator	\$145.00
216971	18 in column for 381 Synergy Indicator	\$195.00

Available for the BenchMark SL, BenchMark SL/HE, BenchMark Mild Steel, BenchMark Stainless Steel, BenchMark HE, BenchMark HE-X, CW-80B, CW-90B and CW90-XB



CW-90B with 480 indicator and 12in column



Base with 882IS/882IS Plus indicator with battery and 12in column



Attachment bracket with IQ Plus 2100



Base with 381 Synergy indicator and 12in column