



Picture is a representation of actual product

Approvals



Order Information

Load Rating	Part #	Est. Weight	Price
1010 NTEP Certified, Potted			
10 kg	33727	2 lb	Consult
15 kg	33728	2 lb	Consult
20 kg	33729	2 lb	Consult
30 kg	33730	2 lb	Consult
50 kg	33731	2 lb	Consult
1010 Non-NTEP, Potted			
5 kg	17462	2 lb	Consult
7 kg	17463	2 lb	Consult
10 kg	17464	2 lb	Consult
20 kg	17482	2 lb	Consult
30 kg	17475	2 lb	Consult
50 kg	17476	2 lb	Consult
90 kg	17471	2 lb	Consult
1010 NTEP Certified, Unpotted			
5 kg	33732	2 lb	Consult
7 kg	33733	2 lb	Consult
1010 Non-NTEP, Unpotted			
3 kg	17481	1.2 lb	Consult
1015 NTEP Certified, Potted			
7 kg	188806	2 lb	Consult
10 kg	188807	2 lb	Consult
15 kg	188808	2 lb	Consult
20 kg	188809	2 lb	Consult
30 kg	188810	2 lb	Consult
50 kg	188811	2 lb	Consult
1015 Non-NTEP, Potted			
3 kg	188804	1.2 lb	Consult

Note: Model 1015 has M6 metric threads

Dimensions

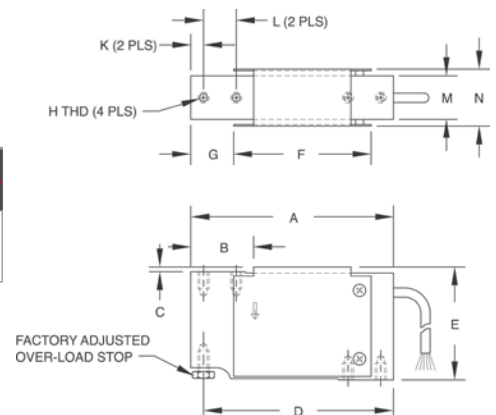
Rated Capacity	A	B	C	D	E	F	G	H	K	L	M	N
kg/mm												
3 to 90	118.0	34.0	3.0	110.5	66.0	80.0	25.0	(1010) 1/4-20 UNC x 13 DP (1015) M6 Metric	7.5	19.1	25.4	33.5

Interchangeable Products

RICE LAKE WEIGHING SYSTEMS
RL1010.....page 160

Specifications

- Full Scale Output:** 2.0 mV/V
- Output Resistance:** 350 (± 3) ohm
- Input Resistance:** Model 1010: 415 (± 15) ohm
Model 1015: 350 (± 3) ohm
- Material/Finish:** Aluminum
- Temperature:** Compensated: 14 °F to 104 °F (-10 °C to 40 °C)
Operating: 0 °F to 150 °F (-18 °C to 65 °C)
- Seal Type:** Environmentally sealed
Potted: IP67
Unpotted: IP65
- Safe Overload:** 150% at center of loading point, full scale
- Rated Excitation:** 5 to 10 VDC (15 V maximum)
- Combined Error:** 0.02% full scale
- Deflection at Capacity:** 0.4 mm
- Cable Length:** 3 m
- Cable Diameter:** 5 mm
PVC jacket
- Cable Color Code:** Green +Excitation
Black -Excitation
Red +Signal
White -Signal
Blue +Sense
Brown -Sense
- Max Platform Size:** 400.05 x 400.05 mm
- Warranty:** One-year limited
- Approvals:** NTEP
cFMus



VPG®
TEDEA-HUNTLEIGH®