



Picture is a representation of actual product

Approvals

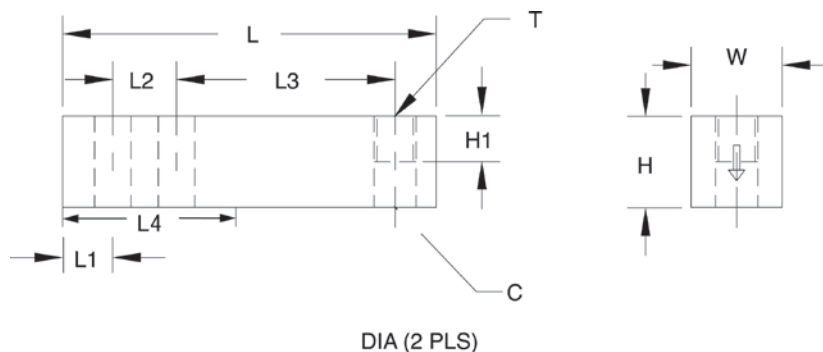


Order Information

Load Rating	Part #	Est. Weight	Price
1,000 lb	21516	3 lb	Consult
2,500 lb	21517	3 lb	Consult
4,000 lb	21518	3 lb	Consult
5,000 lb	21519	8 lb	Consult
10,000 lb	21520	8 lb	Consult

Dimensions

Rated Capacity	C	H	H1	L	L1	L2	L3	L4	T	W
lb/in										
1,000 to 4,000	0.53	1.25	0.62	5.12	0.62	1.00	3.00	2.25	1/2-20 UNF	1.25
5,000 to 10,000	0.78	1.50	0.75	6.75	0.75	1.50	3.75	3.12	3/4-16 UNF	1.50



Interchangeable Products

RICE LAKE WEIGHING SYSTEMS

RL30000Ipage 110

RICE LAKE WEIGHING SYSTEMS

RL32018page 102

VPG® TEDEA-HUNTLEIGH®

3411 page 306

ARTECH®

30310

Weigh Module Available

RICE LAKE WEIGHING SYSTEMS

RL50210TApage 37

RICE LAKE WEIGHING SYSTEMS

RL1800 Series page 48

Specifications

Full Scale Output:

3.0 mV/V

Output Resistance:

352 (± 3) ohm

Input Resistance:

350 (± 7) ohm

Material/Finish:

Alloy steel, nickel plated

Temperature:

Compensated:

14 °F to 104 °F (-10 °C to 40 °C)

Operating:

0 °F to 150 °F (-18 °C to 65 °C)

Seal Type:

Environmentally sealed, IP67

Safe Overload:

150% full scale

Safe Sideload:

100% full scale

Rated Excitation:

5 to 10 VDC (15 V maximum)

Combined Error:

0.025% full scale

Non-repeatability:

0.01% full scale

Insulation Resistance:

1,000 megohm

Deflection at Capacity:

1,000 lb: 0.016 in

2,500 lb: 0.03 in

4,000 lb: 0.04 in

5,000 lb: 0.035 in

10,000 lb: 0.042 in

Cable Length:

20 ft

Cable Color Code:

Red +Excitation

Black -Excitation

Green +Signal

White -Signal

Warranty:

One-year limited

Approvals:

NTEP

cFMus