

Software Systems

TABLE OF CONTENTS

VIRTUI2® 926
PC-Based HMI for iQUBE2®

VIRTUlink 927
Cloud Accessible Diagnostics and Scale Monitoring

Interchange 929
920i®/1280 Database Management Software

OnTrak® 930
Truck Data Management Software

WeighVault® 931

WinWedge® TAL Software 932
Wedge Software

SOFTWARE SYSTEMS

Product names, logos, brands and other trademarks featured
or referred to within this publication are the property of their respective trademark holders.

VIRTUi2®

PC-Based HMI for iQUBE2®

SOFTWARE SYSTEMS



VIRTUi2®

VIRTUi2 is a Windows®-based desktop application that works with iQUBE2® to replicate simple indicator functionality ideal for system integrators and OEMs wanting to provide a PC-based solution. Load cells are individually monitored and calibrated, making setup easy.

Approvals



Part Number/Price

Part #	Description	Price
108436	Activation part number - requires machine ID and customer's email address	\$500.00

Standard Features

- Virtual front panel consists of display and five-button keypad
- Web browser-based iQUBE2 cell status
- Provides local and remote reporting of diagnostics and error conditions
- Up to four scales and one total scale
- Primary/secondary units configuration (lb, kg, short tons, metric tons, none)
- RS-232 communications at up to 460 kbps
- Electronic Data Processing (EDP) port over RS-232 and TCP/IP
- Printer port for output-only, simplex communications
- Two print formats
- Provides iQUBE2 configuration screen and iQUBE2 digital I/O configuration
- Supports iQUBE2 diagnostics with configurable error viewing
- Peak weight history
- Recalibration notification
- Concentrated load capacity (CLC)
- Section capacity

Specifications

Minimum System Requirements:

Windows® 8.1 and newer

Serial port

USB to serial converter, or Ethernet TCP/IP for connection to iQUBE2

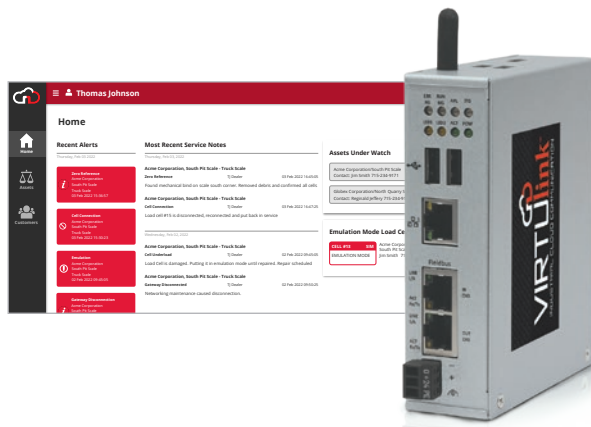
Additional serial ports are required for connections to printers/remote displays

Annunciators:

Units (lb, kg, short tons (tn), metric tons (t), NONE) gross/net, motion, center of zero

Approvals:

NTEP CC 04-058 Class III/IIIL, 10,000d



VIRTUlink™ connects weighing equipment to the cloud, enabling data from networked devices to be utilized for a wide variety of business and operational decisions.

Standard Features

Data

- Sends raw and analyzed values from the scale to the cloud
- Supports long-term efficiency by providing scale and throughput records
- Expandable with support for multiple data points from indicators, junction boxes, auxiliary equipment, sensors, web relays and IP cameras

Diagnostics

- Enhanced onboard diagnostics identify cell noise, tests for linearity and zero-reference, and monitors drift
- Diagnostics are complemented by a unique load cell emulation feature which compensates for a failing load cell until a repair can be made
- Unmatched reaction time (500 cycles per second) brings accuracy to new levels

Dashboard

- Online portal to monitor scale status in real-time
- Receive alerts when scale is outside of programmable tolerances
- Remotely identify service needs and review technician notes
- Hosted on a cloud platform



Specifications

Communication:

Ethernet TCP/IP

Power Connector:

3-pin terminal block (3.5 mm)

Power Supply:

24 V DC \pm 6 V DC

Conformity with UL:

Use Class 2 power source, Over-voltage Category II

Current (at 24 V DC):

170 mA (typical)

Operating System:

Security-hardened Linux

Display:

8 LEDs (2 programmable)

Real-time Clock:

Capacitor buffered, maximum 7 days backup, maintenance free

Gateway Hardware/Communication

Memory:

Integrated memory 1 GB DDR3 RAM, SD card 32 GB MLC NAND, Micro SD card

IT Interface:

1 x 10/100 Mbit, Microchip LAN9514
1 x RJ45 socket LAN connector

Required Accessible Ports:

http (80), https (443), MQTT (1883), MQTT over SSL (8883), AMQP (5672), AMQPS (5671)

Required Accessible Ports:

http (80)
https (443)
MQTT (1883)
MQTT over SSL (8883)
AMQP (5672)
AMQPS (5671)

Environment Protection:

IP20

Ambient Temperature:

Operation: -20 °C to 60 °C
Storage: -40 °C to 85 °C

Humidity Range:

10% to 95 % (95% at 40 °C)
relative humidity (non-condensing)

Use:

Indoor

Dimensions:

5.5 x 1.38 x 1.13 in
(140 mm x 35 mm x 105 mm)

Weight:

0.89 lb (400 g)

Metal Housing:

DIN top hat rail mount

Approvals:

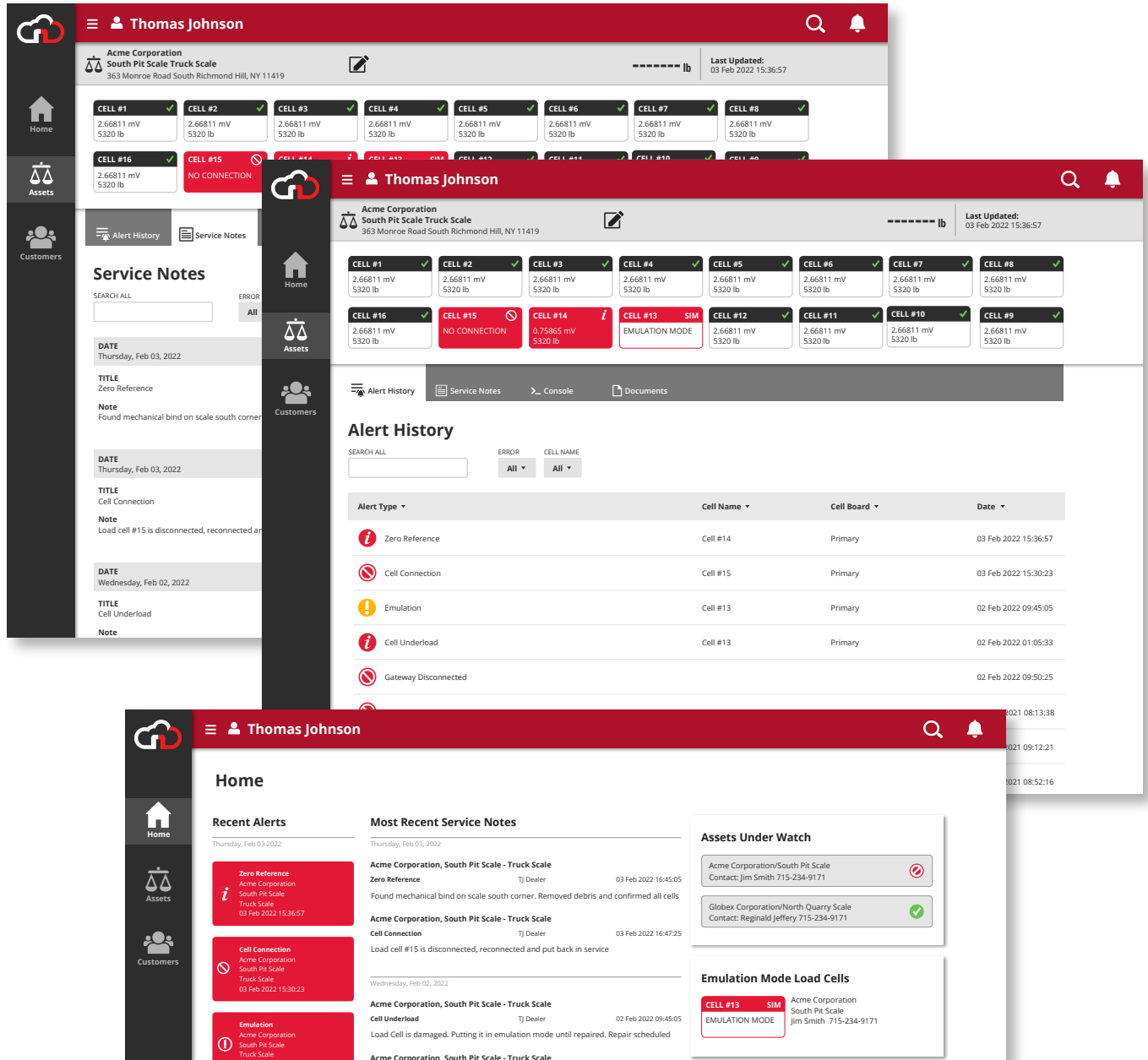
UL – Nr. E221530 Vol D1
FCC – ID 2ANEG0001
IC – 24152-0001
KCC – No. R-C-HKR-ETP51EN-RE
UL Japan – No. 007-AH0211
RoHS
Conformance with EMC Directives:
CE Emission EN 55011:2009
Immunity IEC 61000-6-2/3, EN 61131-2
Electrostatic discharge (ESD)
(air and contact discharge method) EN 61000-4-2
Fast transient interferences (Burst) EN 61000-4-4
Surge voltage EN 61000-4-5

Part Numbers/Price

Part #	Description	Price
209604	VIRTUlink secure gateway	\$1,795.00
215212	Power supply for VIRTUlink secure gateway, 3 wire AC power and DC hookup 24 VDC cord (12 inches)	\$260.00
215213	24 VDC output wall adapter, 100 to 240VAC input, 12W	\$45.50
211283	VIRTUlink cloud-service contract, annual agreement	\$1,200.00

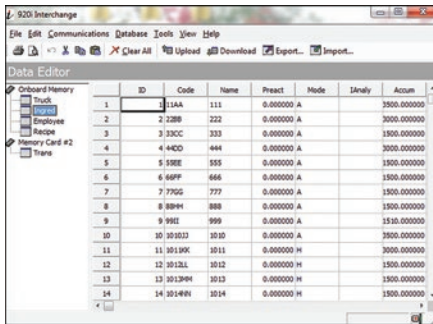
Specifications subject to change without notice.

SOFTWARE SYSTEMS

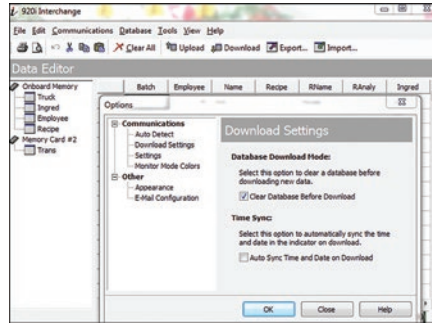


The screenshot displays the VIRTUlink software interface for Thomas Johnson. The interface is divided into several sections:

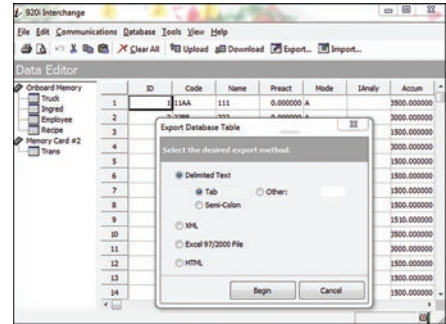
- Home:** Shows a grid of scale cells (CELL #1 to CELL #16) with their respective voltage (2.66811 mV) and weight (5320 lb) readings. Some cells show status icons (green checkmark, red X, red circle with exclamation mark).
- Assets:** Lists the assets under watch, including Acme Corporation/South Pit Scale and Globex Corporation/North Quarry Scale.
- Customers:** Lists the customers, including Acme Corporation and Globex Corporation.
- Service Notes:** Displays a list of service notes with details such as DATE, TITLE, and Note.
- Alert History:** Shows a table of alerts with columns for Alert Type, Cell Name, Cell Board, and Date.
- Recent Alerts:** Lists the most recent alerts, including Zero Reference, Cell Connection, and Emulation.
- Most Recent Service Notes:** Displays the most recent service notes, including Acme Corporation, South Pit Scale - Truck Scale.
- Emulation Mode Load Cells:** Lists the load cells in emulation mode, including CELL #13.



Database Editor



Communication Settings for Download



Export or Import Data

Interchange database management software is used to set up a custom job file for each database you need to export. Manually or automatically run the job file by setting a predetermined time using Windows® Task Scheduler.

Part Number/Price

Part #	Description	Price
72809	Interchange database software	\$295.00

Standard Features

- Edit and manage databases
- Set up using an export job wizard
- Connect using RS-232, RS-485 or Ethernet TCP/IP
- Program will connect to the indicator and upload the current database structure
- Select the desired database
- Export database table file types: delimited text, XML, XLS, HTML

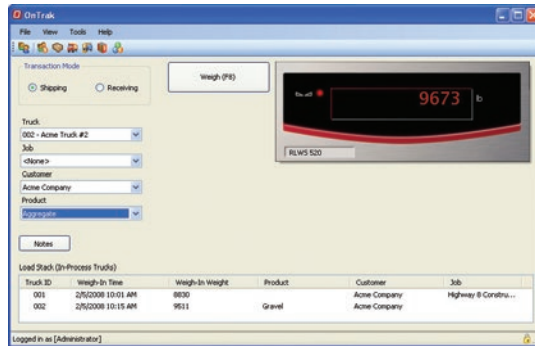
Specifications

Minimum System Requirements:

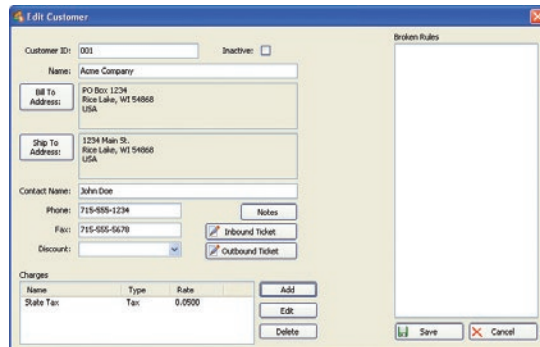
Windows® 7 or newer

OnTrak®

TRUCK SCALE DATA MANAGEMENT



Weigh Scale



Customer Account Information

Approvals



Part Numbers/Price

Part #	Description	Price
104787	OnTrak activation code	\$1,495.00
101062	OnTrak CD-ROM	\$84.00

OnTrak trial at www.ricelake.com/ontrak

Options/Accessories

Part #	Description	Price
Consult	Non-Rice Lake indicator interface	\$245.00
Consult	Custom reports	\$243.00/hour
Consult	Database configuration	\$243.00/hour
FLD-INSTALL	Field installation	\$1,395.00/weekday plus expenses
104789	Phone support, one hour	\$145.00
101003	Additional OnTrak manual	\$65.00

Standard Features

- Supports systems using Windows® 10 and newer
- Microsoft SQL Server Express client/server database (free edition)
- Comprehensive report filters
- User and administrator roles
- Backup and restore via SQL Server Management Studio freely available through Microsoft
- Unlimited charge/discount per product
- Ship or receive mode for each transaction
- Exclusive database for: customer, hauler, truck, product, job, price/discount, tax, transaction
- Ethernet TCP/IP or RS-232 connectivity
- Supports VIRTUi/VIRTUi2® or Rice Lake weight indicators
- .CSV transaction file export
- Supports one or two scales

Optional Features

- Image capture with Ethernet camera TCP/IP (requires SQL Server Standard or better through Microsoft)
- Interface to non-Rice Lake weight indicators
- Custom reports
- Database configuration
- Field installation and training
- Factory phone support

Specifications

System Requirements:

Windows® 10 and newer (x64 systems)

Databases:

10 GB max database size when using included Microsoft SQL Server Express
Unlimited database size when using a purchased edition (contact Microsoft for details on purchasing a licensed edition of SQL Server)

Communications:

Support for multiple printers
Supports all Rice Lake indicator interfaces
Supports VIRTUi/VIRTUi2 interface
920i based Automated Ticketing Kiosks
Optional drivers available for non-Rice Lake weight indicators

Transaction Ticket:

User defined ticket formatting

Reports:

Comprehensive report filters
Optional custom reports

Export Data:

File transfer via XML transaction; exported reports can be saved as PDF/XLS; configurable transaction data export in .CSV file format

Transaction Calculations:

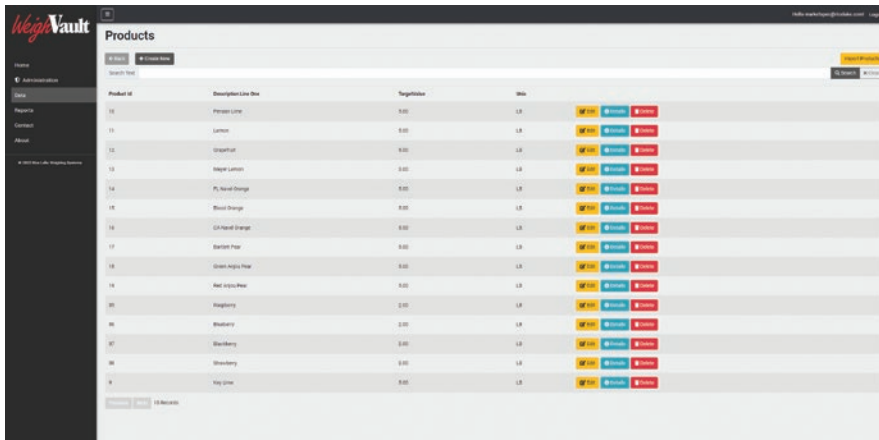
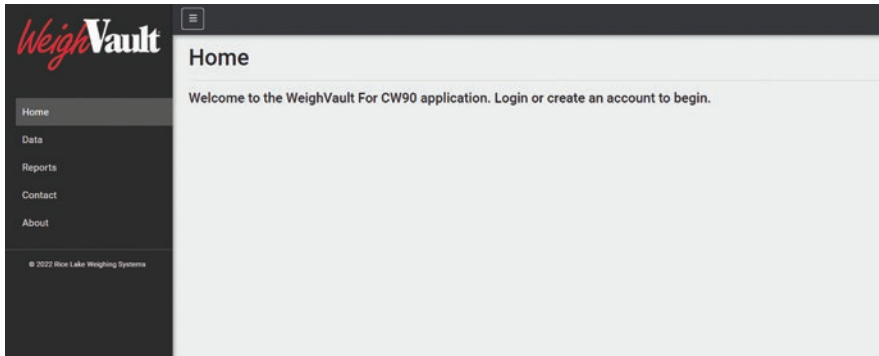
Unlimited product prices and discounts
Tax calculations (does not integrate directly to financial software)

Software Support:

Database configuration, field installation and training available
Phone support packages available
Contact Rice Lake for further options

Approvals:

NTEP CC 05-107



Standard Features

- Specialized PC software makes data entry easy
- Boost product ID storage to nearly limitless potential, and manage as many scales as necessary
- Eliminates front-panel entry of ID parameters
- Quickly program, edit and manage scales and each unique product ID right from your PC
- Stores the details of each transaction for either a single scale or multiple scales
- Collects data as transactions occur and provides detailed transaction and productivity reports
- Allows users to add, edit and access IDs over a network connection
- Reports can be exported into word processing, spreadsheet or PDF format

REST API designed to:

- Extend reach of WeighVault application
- Gain efficiencies for programmers integrating application specific content
- Enterprise dashboard view points
- Useful weight data related to IDs
- Boost system usage

Part Number/Price

Part #	Description	Price
117358	Software package, WeighVault for CW90/90X	\$265.00
125546	Software package, WeighVault for Counterpart	\$265.00

Counterpart Functions Only

Data Registers:

- ID code [32 characters]
- Unit weight [6 places]
- Tare weight [6 places]
- Units field
- Parts name [32 characters]
- Part description [32 characters]
- Lot number [32 characters]
- Location [12 characters]
- Inventory quantity [7 characters]

Reports:

- Part
- Inventory
- Activity
- Location

CW-90/90X Functions Only

Part Fields:

- Product ID [4 characters]
- Two descriptions fields [32 characters each]
- Target
- Tare
- Over
- Under
- Units

Reports:

- Transaction
- Productivity

Specifications

Minimum System Specifications:

CW-90X or Counterpart®
800+ MHz Intel® compatible processor
1 GB of RAM
750 MB hard drive space
TCP/IP connections to a CW-90, CW-90X or Counterpart

Recommended System Specifications:

1.0 GHz Intel compatible processor
2 GB of RAM
4 GB hard drive space
Windows 10 or newer (x64 systems)
TCP/IP connections to a CW-90, CW-90X or Counterpart

Network Requirements:

The PC running the WeighVault service must have a static IP address
Known IP address and subnet of the host PC;
if connecting via WLAN, known network SSID and security settings (pass keys and phrases)
Network policy must allow passwords of six characters

WinWedge® TAL Software

Wedge Software



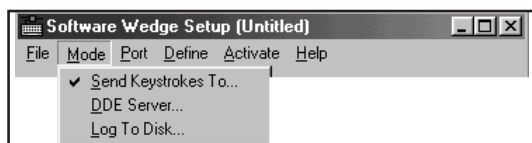
Standard Features

- Input scale or instrument data directly into Excel®, Access®, statistical software, LIMS, MMIs, or any Windows® application
- Transfers RS-232 data quickly, accurately and formatted to your exact specifications
- Powerful DDE options for collecting data from multiple devices simultaneously
- Extremely easy to set up and use

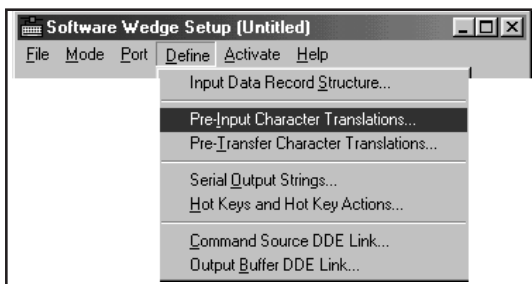
Part Number/Price

Part #	Description	Price
75351	WinWedge® TAL software, 32 Std	\$345.00
72304	WinWedge® TAL software, 32 Pro, TCP/Wedge	\$575.00

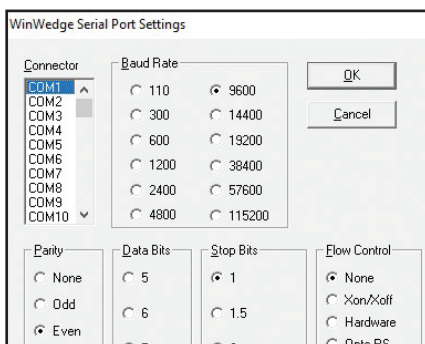
1. Select how you want the data collected:



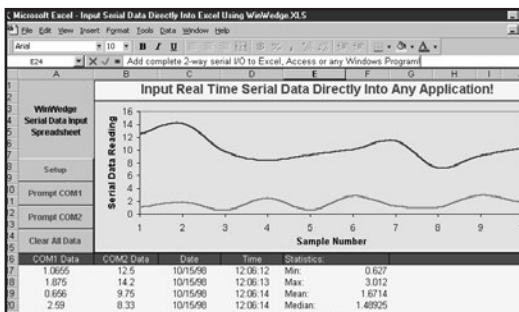
2. Choose the communication parameters for your serial device:



3. Define how you want the serial data to be parsed, filtered, and translated:



4. Activate WinWedge and watch your serial data "pop" into your application:



WinWedge Pro

Additional Features:

- Support for even the most complex devices and serial I/O with advanced data parsing, filtering, formatting and translation
- RS-232 data collection and I/O support, TCP/IP included with Pro version
- More advanced device control options
- Additional features such as math functions and virtual instrument mode

Specifications

System Requirements:

Any version of Windows®
Any Windows PC
4MB of RAM
2MB of hard disk space

Communications:

WinWedge can collect data on any serial port (RS-232 or RS-485) and even on multiple ports simultaneously. Also supports full device control.

Software Support:

Rice Lake Weighing Systems offers field software support for our software packages. Contact our Service Department for software support. Software support is a chargeable service.