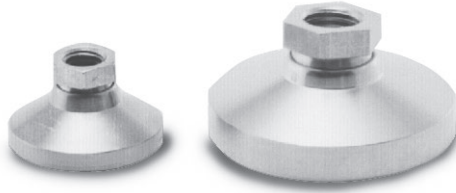


# Leveling Pads



## Standard Features

- Replacement feet adapt to most floor scales
- Available in mild steel or stainless steel
- Simple swivel design
- Use with single-ended shear beams or bending beams to provide a large, flat load introduction surface

## Part Number/Price

Part #	Thread Size	Height	Diameter	Price
<b>Mild Steel</b>				
<b>18817</b>	1/2-13 NC	1.12 in	1.87 in	Consult
<b>18820</b>	3/4-10 NC	1.50 in	3.00 in	Consult
<b>Stainless Steel</b>				
<b>18818</b>	1/2-13 NC	1.12 in	1.87 in	Consult
<b>18833</b>	3/4-10 NC	1.50 in	3.00 in	Consult

Used in conjunction with leveling pad stems

# Leveling Mount



## Standard Features

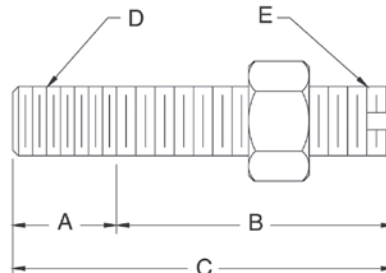
- Designed for use with some floor scales or machinery platforms
- Can limit vibrations transmitted to the scale through the floor
- Provides vibration isolation on most portable platforms

## Part Number/Price

Part #	Thread Size	Height	Diameter	Price
<b>18819</b>	1/2-13 NC	1.81 in	5.00 in	Consult

HARDWARE AND  
ACCESSORIES

# Leveling Pad Stems



## Standard Features

- For use with leveling pads
- One jam nut included

## Part Number/Price

Part #	A	B	C	D	E	Slot	Material	Price
<b>Mild Steel</b>								
<b>17693</b>	0.75 in	2.00 in	2.75 in	3/4-10 UNC	3/4-16 UNF	No	1045	Consult
<b>Stainless Steel</b>								
<b>17689</b>	0.50 in	1.50 in	2.00 in	1/2-13 UNC	1/2-20 UNF	Yes	Stainless steel	Consult
<b>17695</b>	0.75 in	2.00 in	2.75 in	3/4-10 UNC	3/4-16 UNF	No	Stainless steel	Consult

Warning: Do not use to suspend a load