

SINGLE-ENDED BEAMS

Page 224

H35, STAINLESS STEEL



Offers all stainless steel construction, an integral mounting foot as well as dimensional and electrical interchangeability with several load cell manufacturers. Available in capacities ranging from 500 to 5,000 lb, with 20 ft of cable.



Page 225

BBS, ALLOY STEEL



Low-cost bending beam load cell designed for precision force and weight measurement. Features excellent performance and protection against adverse environments, alloy steel sensing elements and low mounting sensitivity. Capacities range from 50 to 1,000 lb. Complete with 10 ft of load cell cable.



Page 226

Z6, STAINLESS STEEL



Featuring stainless steel and a welded seal, this bending beam load cell is ideal for harsh or caustic environments and washdown applications. Capacities range from 5 to 200 kg. Complete with 3 m of load cell cable.



ROCKER COLUMN

Page 227

C16A, STAINLESS STEEL



A rocker column load cell specifically designed for high-capacity weighing in the harshest environments. Ideal for truck scale applications, it features all stainless steel construction with IP68 hermetic sealing. Easy to install and maintain. Available in capacities ranging from 20 to 60 t and includes 12 m of load cell cable.



SINGLE POINTS

Page 228

SP4M, ALUMINUM



Low-profile, off-center load cell designed for use in retail, postal and platform scale applications. Manufactured from aluminum and is movement-compensated for guaranteed accuracy. Protected by a quality gauge coating compound that provides a barrier against high-humidity environments. Capacities range from 3 to 100 kg, and comes standard with three meters of load cell cable.



Page 229

PW15, STAINLESS STEEL



A stainless steel, single point load cell with capacities ranging from 15 to 150 kg. Ideal for platform, hanging scale and other low-capacity beam applications. Complete with ten feet of load cell cable.



Page 230

PW15AH, STAINLESS STEEL



The new standard for hermetically sealed, single point load cells. A unique sealing process guarantees moisture protection from high-pressure jets. IP69K rated and available in 10 to 100 kg capacities. Complete with three meters of load cell cable.



Page 231

PWS, STAINLESS STEEL



A single point cell, constructed of stainless steel and designed for performance in harsh, high-shock load environments. Ideal for platform scales as well as packaging and process weighing equipment. Capacities range from 7 to 150 kg. Complete with 10 ft of load cell cable.





Picture is a representation of actual product.

Approvals

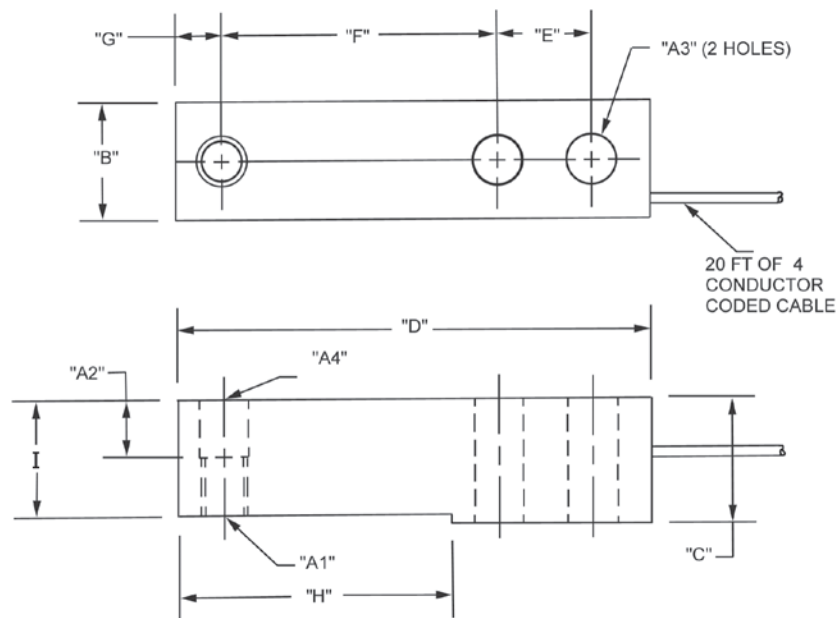


Order Information

Load Rating	Part #	Est. Weight	Price
500 lb	84818	3 lb	\$468.00
1,000 lb	64876	3 lb	\$468.00
2,500 lb	64877	3 lb	\$468.00
4,000 lb	64878	3 lb	\$468.00
5,000 lb	64879	3 lb	\$468.00

Dimensions

Rated Capacity	A1	A2	A3	A4	B	C	D	E	F	G	H	I
lb/in												
500 to 5,000	1/2-20 UNF-2B	0.62	0.53	0.53	1.21	1.19	5.12	1.00	3.00	0.50	2.85	1.12



Interchangeable Products

RICE LAKE WEIGHING SYSTEMS

RLH35page 112

METTLER TOLEDO®

500lb-8ft cable TB601019-008

1,000lb-20ft cable TB601016-020

2,500lb-8ft cable.. TB601016-008

4,000lb-20ft cable TB601017-020

5,000lb-8ft cable.. TB601018-008

METTLER TOLEDO

500 lb..... TB600830-020

METTLER TOLEDO

1,000 lb.....TB600831-020

METTLER TOLEDO

2,000 lb..... TB600832-020

METTLER TOLEDO

2,500 lb..... TB600833-020

Specifications

Full Scale Output:

3.0 mV/V

Output Resistance:

350 (± 3) ohm

Input Resistance:

385 ohm nominal

Material/Finish:

Stainless steel

Temperature:

Compensated:

14 °F to 104 °F (-10 °C to 40 °C)

Operating:

0 °F to 150 °F (-18 °C to 65 °C)

Seal Type:

Welded-seal, IP67

Safe Overload:

150% full scale

Safe Sideload:

100% full scale

Rated Excitation:

5 to 15 VDC

Combined Error:

0.02% full scale

Insulation Resistance:

5,000 megohm

Cable Length:

20 ft

Cable Diameter:

0.190 in

Polyurethane jacket

Cable Color Code:

Green +Excitation

Black -Excitation

White +Signal

Red -Signal

Yellow Shield

Warranty:

One-year limited

Approvals:

NTEP

FM



Picture is a representation of actual product.

Approvals

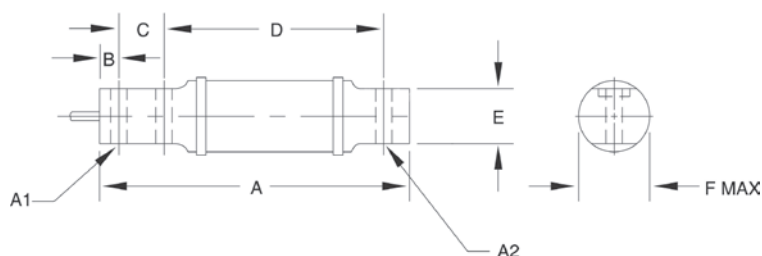


Order Information

Load Rating	Part #	Est. Weight	Price
50 lb	17352	3 lb	\$995.00
100 lb	17353	3 lb	\$995.00
200 lb	17354	3 lb	\$995.00
250 lb	17355	3 lb	\$995.00
500 lb	17356	3 lb	\$995.00
1,000 lb	17357	3 lb	\$995.00

Dimensions

Rated Capacity	A	A1	A2	B	C	D	E	F
lb/in								
50 to 100	6.00	0.31	0.31	0.38	0.88	4.25	1.06	1.25
200 to 1,000	6.63	0.51	0.51	0.50	1.12	4.25	1.06	1.25



Interchangeable Products

RICE LAKE WEIGHING SYSTEMS

RL40BBSpage 121

VPG® SENSORTRONICS®

60007

VPG® BLH®

LBG1

FAIRBANKS®

3-481XX-1, 3-486XX-1

Specifications

Full Scale Output:

2.0 mV/V

Output Resistance:

750 (± 15) ohm

Input Resistance:

810 (± 10) ohm

Material/Finish:

High-alloy steel, nickel plated

Temperature:

Operating:
0 °F to 150 °F (-18 °C to 65 °C)

Seal Type:

Environmentally sealed, IP65

Safe Overload:

150% full scale

Safe Sideload:

50% full scale

Rated Excitation:

5 to 15 VDC

Nonlinearity:

0.03% full scale

Hysteresis:

0.03% full scale

Insulation Resistance:

1,000 megohm

Deflection at Capacity:

50 lb: 0.015 in
100 lb: 0.025 in
200 to 250 lb: 0.030 in
500 lb: 0.020 in
1,000 lb: 0.040 in

Cable Length:

10 ft

Cable Diameter:

0.190 in
Polyurethane jacket

Cable Color Code:

Green +Excitation
Black -Excitation
White +Signal
Red -Signal
Yellow Shield

Warranty:

One-year limited

Approvals:

FM



Picture is a representation of actual product.

Approvals



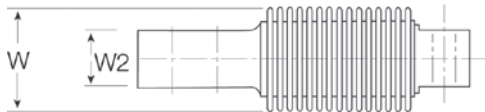
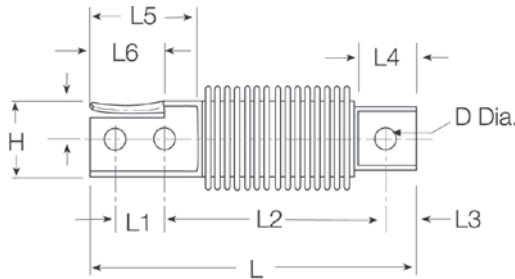
Available upon request

Order Information

Load Rating	Part #	Est. Weight	Price
OIML C3			
10 kg	36173	2 lb	\$895.00
20 kg	36174	2 lb	\$895.00
50 kg	36175	2 lb	\$895.00
100 kg	36176	2 lb	\$895.00
200 kg	36177	2 lb	\$895.00
OIML D1			
5 kg	36172	2 lb	\$895.00

Dimensions

Rated Capacity	H	L	L1	L2	L3	L4	L5	L6	W	W2	D
kg/mm											
5 to 200	31.0	123.0	18.0	82.0	9.9	21.0	45.0	27.9	42.0	20.1	8.2



Interchangeable Products

RICE LAKE WEIGHING SYSTEMS	
RL9018SSpage 109
RICE LAKE WEIGHING SYSTEMS	
RLHBB	
VPG® REVERE	
SHBpage 253
METTLER TOLEDO®	
MTB	

Specifications

Full Scale Output:	2.0 mV/V
Output Resistance:	356 ohm
Input Resistance:	350 to 400 ohm
Material/Finish:	Stainless steel
Temperature:	Operating: 0 °F to 150 °F (-18 °C to 65 °C)
Seal Type:	Welded-seal, IP68
Safe Overload:	150% full scale
Rated Excitation:	5 to 15 V DC
Combined Error:	0.05% full scale
Insulation Resistance:	5,000 megohm
Cable Length:	3 m
Cable Diameter:	4.8 mm PVC jacket
Cable Color Code:	Blue +Excitation Black -Excitation White +Signal Red -Signal Green +Sense Grey -Sense
Warranty:	One-year limited
Approvals:	OIML FM Ex (available upon request)

Stainless Steel, Hermetically Sealed, NTEP Certified 1:10,000 Class IIIL Multiple Cell/OIML, IP68



Picture is a representation of actual product.

Approvals

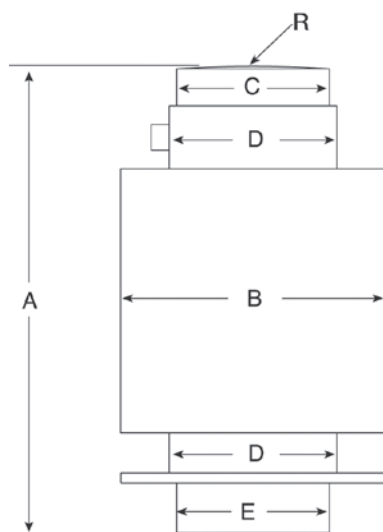


Order Information

Load Rating	Part #	Est. Weight	Price
OIML C3			
20 t	69312	6 lb	\$1,350.00
30 t	69313	6 lb	\$1,350.00
40 t	69314	10 lb	\$1,350.00
60 t	125266	10 lb	\$1,350.00
NTEP Certified			
20 t	106149	6 lb	\$1,350.00
30 t	106150	6 lb	\$1,350.00
40 t	106151	10 lb	\$1,350.00
60 t	125265	10 lb	\$1,350.00

Dimensions

Rated Capacity	A	B	C	D	E	R
t/mm						
20	150.0	76.1	44.0	48.0	44.0	130.0
30	150.0	76.1	44.0	48.0	44.0	160.0
40	150.0	76.1	44.0	48.0	44.0	180.0
60	210.0	76.1	44.0	48.0	44.0	220.0



Specifications

Full Scale Output:2 mV/V \pm 1%**Output Resistance:**706 (\pm 3.5) ohm**Input Resistance:**700 (\pm 20) ohm**Material/Finish:**

Stainless steel

Temperature:

Compensated:

14 °F to 104 °F (-10 °C to 40 °C)

Operating:

0 °F to 150 °F (-18 °C to 65 °C)

Seal Type:

Hermetically sealed, IP68

Safe Overload:

130% full scale

Rated Excitation:

5 to 15 VDC

Combined Error:

0.03% full scale

Insulation Resistance:

5,000 megohm

Cable Length:

12 m

Cable Diameter:

4.8 mm

Polyurethane jacket

Cable Color Code:

Blue +Excitation

Black -Excitation

White +Signal

Red -Signal

Green +Sense

Grey -Sense

Warranty:

One-year limited

Approvals:

NTEP

OIML



Picture is a representation of actual product.

Approvals

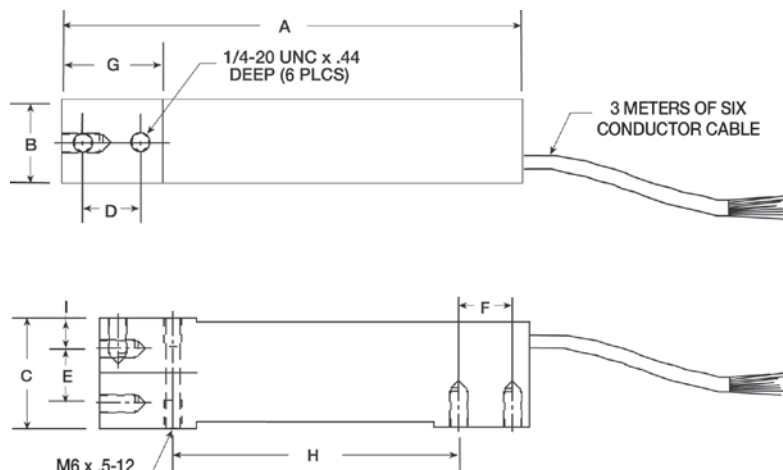


Order Information

Load Rating	Part #	Est. Weight	Price
NTEP Certified			
7 kg	72764	2 lb	\$250.00
15 kg	72767	2 lb	\$250.00
20 kg	72769	2 lb	\$250.00
30 kg	72771	2 lb	\$250.00
50 kg	72776	2 lb	\$250.00
75 kg	72777	2 lb	\$250.00
100 kg	72778	2 lb	\$250.00
OIML with Metric Threads			
3 kg	121396	2 lb	\$250.00
5 kg	121397	2 lb	\$250.00
7 kg	121398	2 lb	\$250.00
10 kg	121399	2 lb	\$250.00
15 kg	121400	2 lb	\$250.00
20 kg	121401	2 lb	\$250.00
30 kg	121402	2 lb	\$250.00
50 kg	121403	2 lb	\$250.00
75 kg	124835	2 lb	\$250.00
100 kg	121404	2 lb	\$250.00

Dimensions

Rated Capacity	A	B	C	D	E	F	G	H	I
kg/mm									
3 to 100	150.3	25.4	39.9	19.1	19.1	19.1	33.8	99.6	11.4



Interchangeable Products

RICE LAKE WEIGHING SYSTEMS

RLSP4*page 159

RICE LAKE WEIGHING SYSTEMS

RL1042.....page 161

VPG® TEDEA-HUNTLEIGH®

1042.....page 313

*Color code is different

Specifications

Full Scale Output:

2.0 mV/V

Output Resistance:

350 (± 3) ohm

Input Resistance:

350 ohm

Material/Finish:

Anodized aluminum

Temperature:

Compensated:

14 °F to 104 °F (-10 °C to 40 °C)

Operating:

0 °F to 150 °F (-18 °C to 65 °C)

Seal Type:

Environmentally sealed, IP67

Safe Overload:

150% full scale

Rated Excitation:

5 to 15 VDC

Combined Error:

0.02% full scale

Insulation Resistance:

5,000 megohm

Deflection at Capacity:

0.015 in

Cable Length:

3 m (9.8 ft)

Cable Diameter:

0.190 in PVC jacket

Cable Color Code:

Blue +Excitation

Black -Excitation

White +Signal

Red -Signal

Green +Sense

Grey -Sense

Warranty:

One-year limited

Approvals:

NTEP

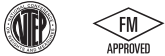
OIML

FM



Picture is a representation of actual product.

Approvals

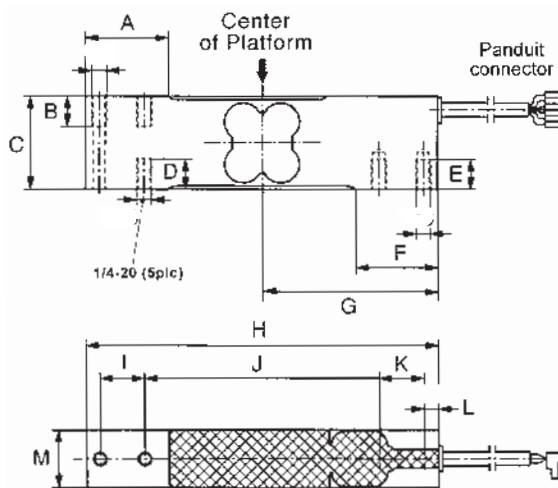


Order Information

Load Rating	Part #	Est. Weight	Price
15 kg	76771	3 lb	\$550.00
20 kg	76772	3 lb	\$550.00
50 kg	76774	3 lb	\$550.00
75 kg	76775	3 lb	\$550.00
100 kg	76776	3 lb	\$550.00
150 kg	84820	3 lb	\$550.00

Dimensions

Rated Capacity	A	B	C	D	E	F	G	H	I	J	K	L	M
kg/mm													
15 to 150	35.0	13.0	40.0	13.0	13.0	35.0	75.0	150.0	19.0	100.0	19.0	6.2	25.0



Interchangeable Products

RICE LAKE WEIGHING SYSTEMS

RLPWM15.....page 155

VPG® TEDEA-HUNTLEIGH®

1142*page 318

*Color code is different

Specifications

Full Scale Output:

2.0 mV/V

Output Resistance:

359 (± 5) ohm

Input Resistance:

380 (± 15) ohm

Material/Finish:

Stainless steel

Temperature:

Compensated:

14 °F to 104 °F (-10 °C to 40 °C)

Operating:

0 °F to 150 °F (-18 °C to 65 °C)

Seal Type:

Environmentally sealed, IP67

Safe Overload:

150% full scale

Rated Excitation:

5 to 15 VDC

Total Error:

0.02% full scale

Insulation Resistance:

1,000 megohm

Deflection at Capacity:

0.2 mm

Cable Length:

10 ft

Cable Diameter:

0.190 in PVC jacket

Cable Color Code:

Blue +Excitation

Black -Excitation

White +Signal

Red -Signal

Green +Sense

Grey -Sense

Warranty:

One-year limited

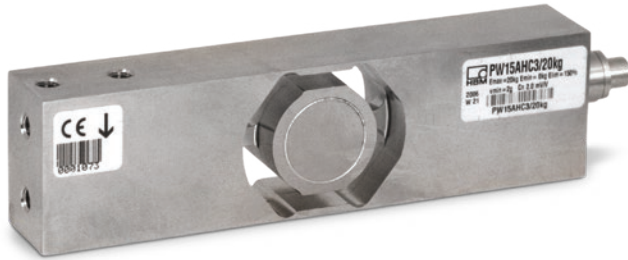
Approvals:

NTEP

FM

SINGLE POINT PW15AH

Stainless Steel, Hermetically Sealed, NTEP Certified 1:5,000 Class III Single Cell, OIML C3, IP69K



Picture is a representation of actual product.

Approvals

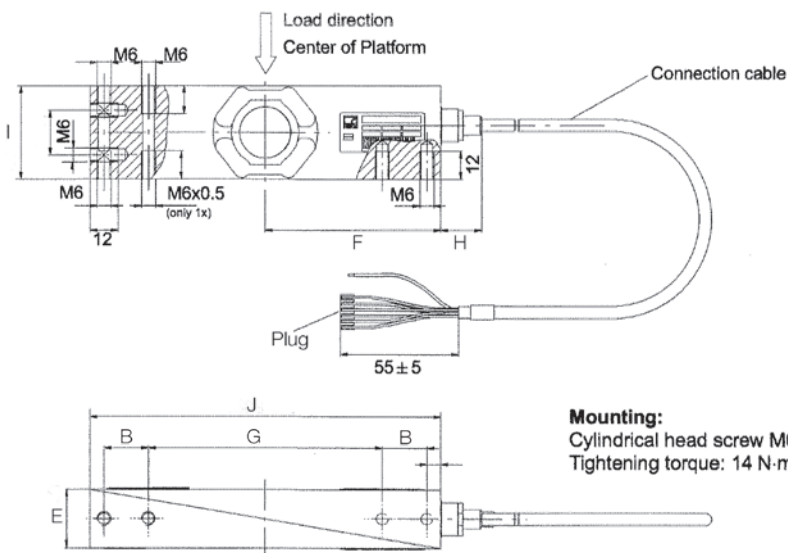


Order Information

Load Rating	Part #	Est. Weight	Price
10 kg	101915	3 lb	\$825.00
20 kg	101916	3 lb	\$825.00
50 kg	101917	3 lb	\$825.00
100 kg	101918	3 lb	\$825.00

Dimensions

Rated Capacity	B	E	F	G	H	I	J
kg/mm							
10 to 100	19.0	25.0	75.0	100.0	17.5	40.0	150.0



Mounting:
Cylindrical head screw M6-10.9
Tightening torque: 14 N·m

Interchangeable Products

RICE LAKE WEIGHING SYSTEMS

RLPWM15HE.....page 154

FLINTEC®

PC4.....page 218

Specifications

Full Scale Output:

2.0 mV/V

Output Resistance:

350 (± 10) ohm

Input Resistance:

380 (± 15) ohm

Material/Finish:

Stainless steel

Temperature:

Compensated:

14 °F to 104 °F (-10 °C to 40 °C)

Operating:

0 °F to 150 °F (-18 °C to 65 °C)

Seal Type:

Hermetically sealed, IP69K

Safe Overload:

150% full scale

Rated Excitation:

5 to 15 VDC

Combined Error:

0.02% full scale

Insulation Resistance:

1,000 megohm

Cable Length:

3 m

Cable Diameter:

5.38 mm

PVC jacket

Cable Color Code:

Blue +Excitation

Black -Excitation

White +Signal

Red -Signal

Green +Sense

Grey -Sense

Warranty:

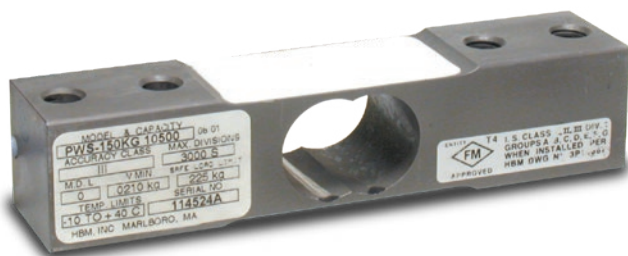
One-year limited

Approvals:

NTEP

OIML

FM



Picture is a representation of actual product.

Approvals

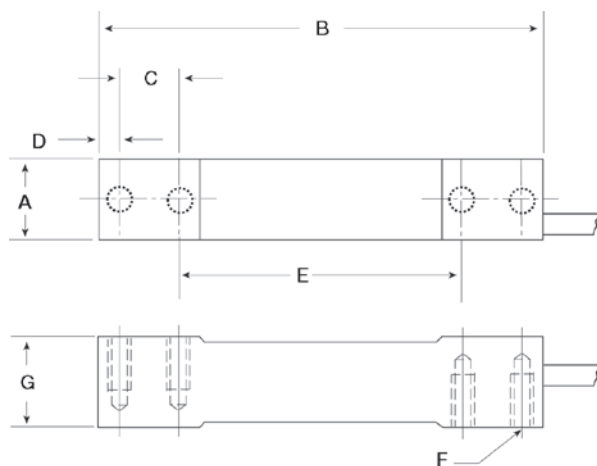


Order Information

Load Rating	Part #	Est. Weight	Price
7 kg	36185	2 lb	\$525.00
10 kg	36186	2 lb	\$525.00
15 kg	36187	2 lb	\$525.00
30 kg	36188	2 lb	\$525.00
60 kg	36189	2 lb	\$525.00
100 kg	68551	2 lb	\$525.00
150 kg	69345	2 lb	\$525.00

Dimensions

Rated Capacity	A	B	C	D	E	F	G
kg/mm							
7 to 15	30.2	139.7	19.1	6.4	88.9	1/4-20 UNC	19.1
30 to 60	30.2	139.7	19.1	6.4	88.9	1/4-20 UNC	23.9
100 to 150	30.2	139.7	22.3	7.8	79.2	3/8-16 UNC	30.7



Interchangeable Products

RICE LAKE WEIGHING SYSTEMS

RL1380..... page 164

Specifications

Full Scale Output:

2.0 mV/V

Output Resistance:

359 (± 10) ohm

Input Resistance:

390 (± 15) ohm

Material/Finish:

Stainless steel

Temperature:

Compensated:

14 °F to 104 °F (-10 °C to 40 °C)

Operating:

0 °F to 150 °F (-18 °C to 65 °C)

Seal Type:

Environmentally sealed, IP67

Safe Overload:

150% full scale

Rated Excitation:

5 to 10 VDC (15 V maximum)

Combined Error:

0.03% full scale

Insulation Resistance:

5,000 megohm

Deflection at Capacity:

<0.4 mm full scale

Cable Length:

10 ft

Cable Diameter:

0.190 in

Polyurethane jacket

Cable Color Code:

Green +Excitation

Black -Excitation

White +Signal

Red -Signal

Yellow Shield

Warranty:

One-year limited

Approvals:

NTEP

OIML

FM

