

### SINGLE-ENDED BEAMS

Page 224

#### H35, STAINLESS STEEL



Offers all stainless steel construction, an integral mounting foot as well as dimensional and electrical interchangeability with several load cell manufacturers. Available in capacities ranging from 500 lb to 5,000 lb, with 20 ft of cable.



Page 225

#### BBS, ALLOY STEEL



Low-cost bending beam load cell designed for precision force and weight measurement. Features excellent performance and protection against adverse environments, alloy steel sensing elements and low mounting sensitivity. Capacities range from 50 lb to 1,000 lb. Complete with 10 ft of load cell cable.



Page 226

#### Z6, STAINLESS STEEL



Featuring stainless steel and a welded seal, this bending beam load cell is ideal for harsh or caustic environments and washdown applications. Capacities range from 5 kg to 200 kg. Complete with 10 ft of load cell cable.



### ROCKER COLUMN

Page 227

#### C16A, STAINLESS STEEL



A rocker column load cell specifically designed for high-capacity weighing in the harshest environments. Ideal for truck scale applications, it features all stainless steel construction with IP68 hermetic sealing. Easy to install and maintain. Available in capacities ranging from 20 t to 60 t and includes 12 m of load cell cable.



### SINGLE POINTS

Page 228

#### SP4M, ALUMINUM



Low-profile, off-center load cell designed for use in retail, postal and platform scale applications. Manufactured from aluminum and is movement compensated for guaranteed accuracy. Protected by a quality gauge coating compound that provides a barrier against high humidity environments. Capacities range from 3 kg to 100 kg, and comes standard with 3 meters of load cell cable.



Page 229

#### PW15, STAINLESS STEEL



A stainless steel, single point load cell with capacities ranging from 15 kg to 150 kg. Ideal for platform, hanging scale and other low capacity beam applications. Complete with 10 ft of load cell cable.



Page 230

#### PW15AH, STAINLESS STEEL



The new standard for hermetically sealed, single-point load cells. A unique sealing process guarantees moisture protection from high-pressure jets. IP69K rated and available in 10 kg to 100 kg capacities.



Page 231

#### PWS, STAINLESS STEEL



A single-point cell, constructed of stainless steel and designed for performance in harsh, high-shock load environments. Ideal for platform scales as well as packaging and process weighing equipment. Capacities range from 7 kg to 150 kg. Complete with 10 ft of load cell cable.





Picture is a representation of actual product.

#### Approvals

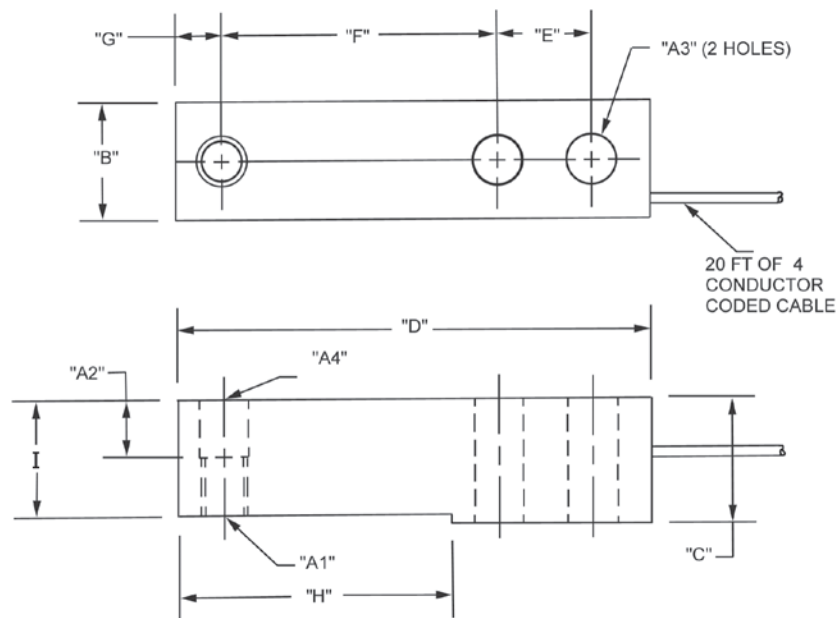


#### Order Information

Load Rating	Part #	Est. Weight	Price
500 lb	<b>84818</b>	3 lb	\$468.00
1,000 lb	<b>64876</b>	3 lb	\$468.00
2,500 lb	<b>64877</b>	3 lb	\$468.00
4,000 lb	<b>64878</b>	3 lb	\$468.00
5,000 lb	<b>64879</b>	3 lb	\$468.00

#### Dimensions

Rated Capacity	A1	A2	A3	A4	B	C	D	E	F	G	H	I
lb/in												
500 to 5,000	1/2-20 UNF-2B	0.62	0.53	0.53	1.21	1.19	5.12	1.00	3.00	0.50	2.85	1.12



#### Interchangeable Products

RICE LAKE WEIGHING SYSTEMS

**RLH35** .....page 114

METTLER TOLEDO®

**500lb-8ft cable** ..... TB601019-008

**1,000lb-20ft cable** TB601016-020

**2,500lb-8ft cable**.. TB601016-008

**4,000lb-20ft cable** TB601017-020

**5,000lb-8ft cable**.. TB601018-008

METTLER TOLEDO

**500 lb**..... TB600830-020

METTLER TOLEDO

**1,000 lb**.....TB600831-020

METTLER TOLEDO

**2,000 lb**..... TB600832-020

METTLER TOLEDO

**2,500 lb**..... TB600833-020

#### Specifications

##### Full Scale Output:

3.0 mV/V

##### Output Resistance:

350 (± 3) ohm

##### Input Resistance:

385 ohm nominal

##### Material/Finish:

Stainless steel

##### Temperature:

Compensated:

14 °F to 104 °F (-10 °C to 40 °C)

Operating:

0 °F to 150 °F (-18 °C to 65 °C)

##### Seal Type:

Welded-seal, IP67

##### Safe Overload:

150% full scale

##### Safe Sideload:

100% full scale

##### Rated Excitation:

5 to 15 VDC

##### Combined Error:

0.02% full scale

##### Insulation Resistance:

5,000 megohm

##### Cable Length:

20 ft

##### Cable Diameter:

0.190 in Polyurethane jacket

##### Cable Color Code:

Green +Excitation

Black -Excitation

White +Signal

Red -Signal

Yellow Shield

##### Warranty:

One-year limited

##### Approvals:

FM

NTEP



Picture is a representation of actual product.

### Approvals

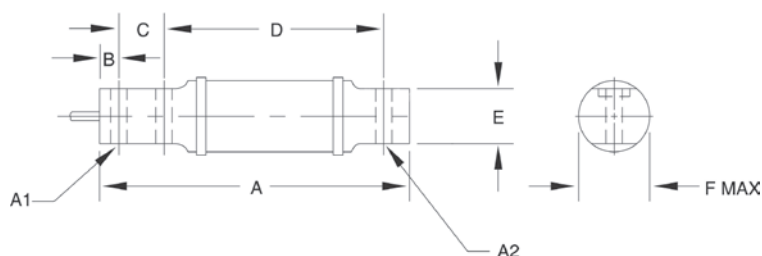


### Order Information

Load Rating	Part #	Est. Weight	Price
50 lb	17352	3 lb	\$995.00
100 lb	17353	3 lb	\$995.00
200 lb	17354	3 lb	\$995.00
250 lb	17355	3 lb	\$995.00
500 lb	17356	3 lb	\$995.00
1,000 lb	17357	3 lb	\$995.00

### Dimensions

Rated Capacity	A	A1	A2	B	C	D	E	F
lb/in								
50 to 100	6.00	0.31	0.31	0.38	0.88	4.25	1.06	1.25
200 to 1,000	6.63	0.51	0.51	0.50	1.12	4.25	1.06	1.25



### Interchangeable Products

RICE LAKE WEIGHING SYSTEMS

**RL40BBS** ..... page 123

VPG® SENSORTRONICS®

**60007**

VPG® BLH®

**LBG1**

FAIRBANKS®

**3-481XX-1, 3-486XX-1**

### Specifications

#### Full Scale Output:

2.0 mV/V

#### Output Resistance:

750 (± 15) ohm

#### Input Resistance:

810 (± 10) ohm

#### Material/Finish:

High-alloy steel, nickel plated

#### Temperature:

Operating:  
0 °F to 150 °F (-18 °C to 65 °C)

#### Seal Type:

Environmentally sealed, IP65

#### Safe Overload:

150% full scale

#### Safe Sideload:

50% full scale

#### Rated Excitation:

5 to 15 VDC

#### Nonlinearity:

0.03% full scale

#### Hysteresis:

0.03% full scale

#### Insulation Resistance:

1,000 megohm

#### Deflection at Capacity:

50 lb: 0.015 in  
100 lb: 0.025 in  
200 to 250 lb: 0.030 in  
500 lb: 0.020 in  
1,000 lb: 0.040 in

#### Cable Length:

10 ft

#### Cable Diameter:

0.190 in  
Polyurethane jacket

#### Cable Color Code:

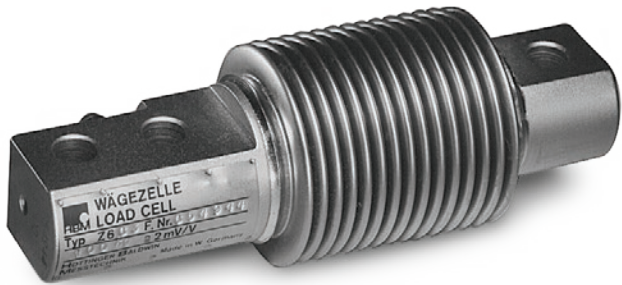
Green +Excitation  
Black -Excitation  
White +Signal  
Red -Signal  
Yellow Shield

#### Warranty:

One-year limited

#### Approvals:

FM



Picture is a representation of actual product.

Approvals



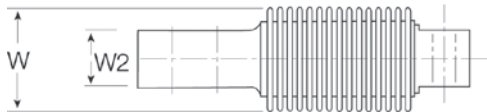
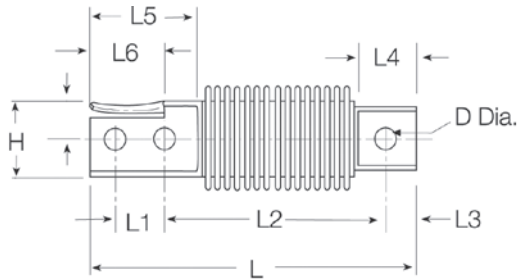
Available  
upon  
request

Order Information

Load Rating	Part #	Est. Weight	Price
<b>OIML C3</b>			
10 kg	36173	2 lb	\$895.00
20 kg	36174	2 lb	\$895.00
50 kg	36175	2 lb	\$895.00
100 kg	36176	2 lb	\$895.00
200 kg	36177	2 lb	\$895.00
<b>OIML D1</b>			
5 kg	36172	2 lb	\$895.00

Dimensions

Rated Capacity	H	L	L1	L2	L3	L4	L5	L6	W	W2	D
kg/mm											
5 to 200	31.0	123.0	18.0	82.0	9.9	21.0	45.0	27.9	42.0	20.1	8.2



Interchangeable Products

RICE LAKE WEIGHING SYSTEMS  
**RL9018SS** .....page 111  
RICE LAKE WEIGHING SYSTEMS  
**RLHBB**  
VPG® REVERE  
**SHB** ..... page 253  
METTLER TOLEDO®  
**MTB**

Specifications

**Full Scale Output:**  
2.0 mV/V  
**Output Resistance:**  
356 ohm  
**Input Resistance:**  
350 to 400 ohm  
**Material/Finish:**  
Stainless steel  
**Temperature:**  
Operating:  
0 °F to 150 °F (-18 °C to 65 °C)  
**Seal Type:**  
Welded-seal, IP68  
**Safe Overload:**  
150% full scale  
**Rated Excitation:**  
5 to 15 V DC  
**Combined Error:**  
0.05% full scale  
**Insulation Resistance:**  
5,000 megohm  
**Cable Length:**  
10 ft  
**Cable Diameter:**  
0.190 in PVC jacket  
**Cable Color Code:**  
Blue +Excitation  
Black -Excitation  
White +Signal  
Red -Signal  
Green +Sense  
Grey -Sense  
**Warranty:**  
One-year limited  
**Approvals:**  
FM  
OIML  
Ex (available upon request)

Stainless Steel, Hermetically Sealed, NTEP Certified 1:10,000 Class IIIL Multiple Cell/OIML, IP68



Picture is a representation of actual product.

## Approvals

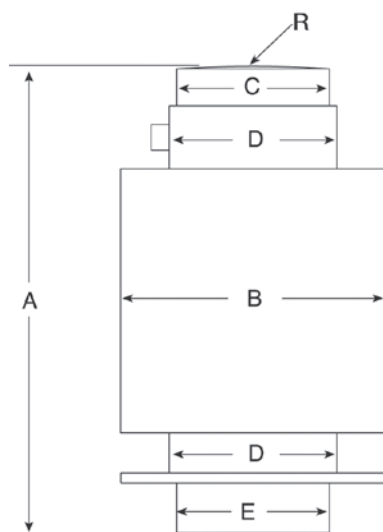


## Order Information

Load Rating	Part #	Est. Weight	Price
<b>OIML C3</b>			
20 t	<b>69312</b>	6 lb	\$1,350.00
30 t	<b>69313</b>	6 lb	\$1,350.00
40 t	<b>69314</b>	10 lb	\$1,350.00
60 t	<b>125266</b>	10 lb	\$1,350.00
<b>NTEP Certified</b>			
20 t	<b>106149</b>	6 lb	\$1,350.00
30 t	<b>106150</b>	6 lb	\$1,350.00
40 t	<b>106151</b>	10 lb	\$1,350.00
60 t	<b>125265</b>	10 lb	\$1,350.00

## Dimensions

Rated Capacity	A	B	C	D	E	R
t/mm						
20	150.0	76.1	44.0	48.0	44.0	130.0
30	150.0	76.1	44.0	48.0	44.0	160.0
40	150.0	76.1	44.0	48.0	44.0	180.0
60	210.0	76.1	44.0	48.0	44.0	220.0



## Specifications

**Full Scale Output:**2 mV/V  $\pm$  1%**Output Resistance:**706 ( $\pm$  3.5) ohm**Input Resistance:**700 ( $\pm$  20) ohm**Material/Finish:**

Stainless steel

**Temperature:**

Compensated:

14 °F to 104 °F (-10 °C to 40 °C)

Operating:

0 °F to 150 °F (-18 °C to 65 °C)

**Seal Type:**

Hermetically sealed, IP68

**Safe Overload:**

130% full scale

**Rated Excitation:**

5 to 15 VDC

**Combined Error:**

0.03% full scale

**Insulation Resistance:**

5,000 megohm

**Cable Length:**

12 m

**Cable Diameter:**

0.190 in Polyurethane jacket

**Cable Color Code:**

Blue +Excitation

Black -Excitation

White +Signal

Red -Signal

Green +Sense

Grey -Sense

**Warranty:**

One-year limited

**Approvals:**

NTEP

OIML



Picture is a representation of actual product.

Approvals

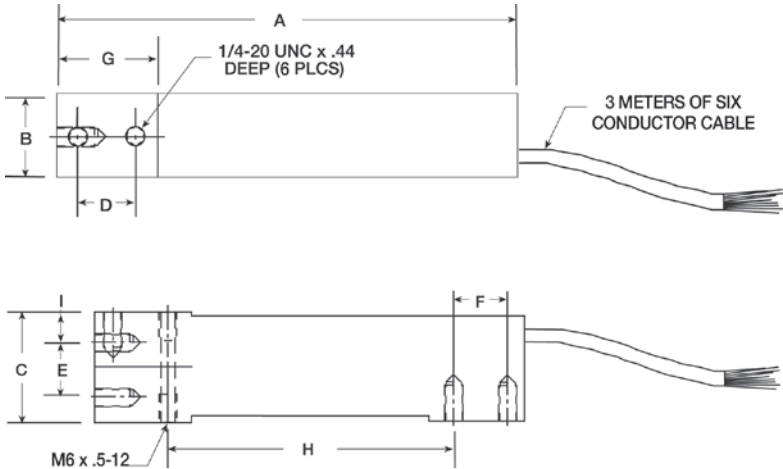


Order Information

Load Rating	Part #	Est. Weight	Price
NTEP Certified			
7 kg	72764	2 lb	\$250.00
15 kg	72767	2 lb	\$250.00
20 kg	72769	2 lb	\$250.00
30 kg	72771	2 lb	\$250.00
50 kg	72776	2 lb	\$250.00
75 kg	72777	2 lb	\$250.00
100 kg	72778	2 lb	\$250.00
OIML with Metric Threads			
3 kg	121396	2 lb	\$250.00
5 kg	121397	2 lb	\$250.00
7 kg	121398	2 lb	\$250.00
10 kg	121399	2 lb	\$250.00
15 kg	121400	2 lb	\$250.00
20 kg	121401	2 lb	\$250.00
30 kg	121402	2 lb	\$250.00
50 kg	121403	2 lb	\$250.00
75 kg	124835	2 lb	\$250.00
100 kg	121404	2 lb	\$250.00

Dimensions

Rated Capacity	A	B	C	D	E	F	G	H	I
kg/mm									
3 to 100	150.3	25.4	39.9	19.1	19.1	19.1	33.8	99.6	11.4



Interchangeable Products

RICE LAKE WEIGHING SYSTEMS	
RLSP4*	page 160
RICE LAKE WEIGHING SYSTEMS	
RL1042	page 163
VPG® TEDEA-HUNTLEIGH®	
1042	page 313

\*Color code is different

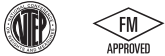
Specifications

- Full Scale Output:**  
2.0 mV/V
- Output Resistance:**  
350 (± 3) ohm
- Input Resistance:**  
350 ohm
- Material/Finish:**  
Anodized aluminum
- Temperature:**  
Compensated:  
14 °F to 104 °F (-10 °C to 40 °C)  
Operating:  
0 °F to 150 °F (-18 °C to 65 °C)
- Seal Type:**  
Environmentally sealed, IP67
- Safe Overload:**  
150% full scale
- Rated Excitation:**  
5 to 15 VDC
- Combined Error:**  
0.02% full scale
- Insulation Resistance:**  
5,000 megohm
- Deflection at Capacity:**  
0.015 in
- Cable Length:**  
3 m (9.8 ft)
- Cable Diameter:**  
0.190 in PVC jacket
- Cable Color Code:**  
Blue +Excitation  
Black -Excitation  
White +Signal  
Red -Signal  
Green +Sense  
Grey -Sense
- Warranty:**  
One-year limited
- Approvals:**  
FM  
NTEP  
OIML



Picture is a representation of actual product.

#### Approvals

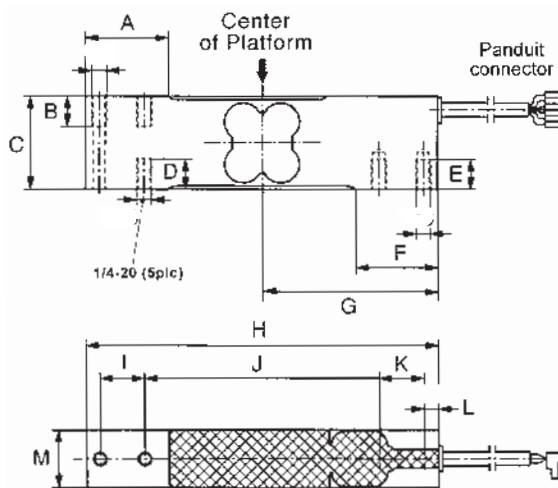


#### Order Information

Load Rating	Part #	Est. Weight	Price
15 kg	76771	3 lb	\$550.00
20 kg	76772	3 lb	\$550.00
50 kg	76774	3 lb	\$550.00
75 kg	76775	3 lb	\$550.00
100 kg	76776	3 lb	\$550.00
150 kg	84820	3 lb	\$550.00

#### Dimensions

Rated Capacity	A	B	C	D	E	F	G	H	I	J	K	L	M
kg/mm													
15 to 150	35.0	13.0	40.0	13.0	13.0	35.0	75.0	150.0	19.0	100.0	19.0	6.2	25.0



#### Interchangeable Products

RICE LAKE WEIGHING SYSTEMS

**RLPWM15**.....page 156

VPG® TEDEA-HUNTLEIGH®

**1142\*** .....page 318

\*Color code is different

#### Specifications

##### Full Scale Output:

2.0 mV/V

##### Output Resistance:

359 (± 5) ohm

##### Input Resistance:

380 (± 15) ohm

##### Material/Finish:

Stainless steel

##### Temperature:

Compensated:

14 °F to 104 °F (-10 °C to 40 °C)

Operating:

0 °F to 150 °F (-18 °C to 65 °C)

##### Seal Type:

Environmentally sealed, IP67

##### Safe Overload:

150% full scale

##### Rated Excitation:

5 to 15 VDC

##### Total Error:

0.02% full scale

##### Insulation Resistance:

1,000 megohm

##### Deflection at Capacity:

0.2 mm

##### Cable Length:

10 ft

##### Cable Diameter:

0.190 in PVC jacket

##### Cable Color Code:

Blue +Excitation

Black -Excitation

White +Signal

Red -Signal

Green +Sense

Grey -Sense

##### Warranty:

One-year limited

##### Approvals:

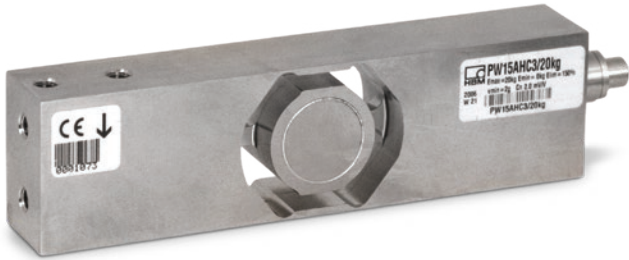
FM

NTEP



SINGLE POINT  
**PW15AH**

Stainless Steel, Hermetically Sealed, NTEP Certified 1:5,000 Class III Single Cell, OIML C3, IP69K



Picture is a representation of actual product.

Approvals

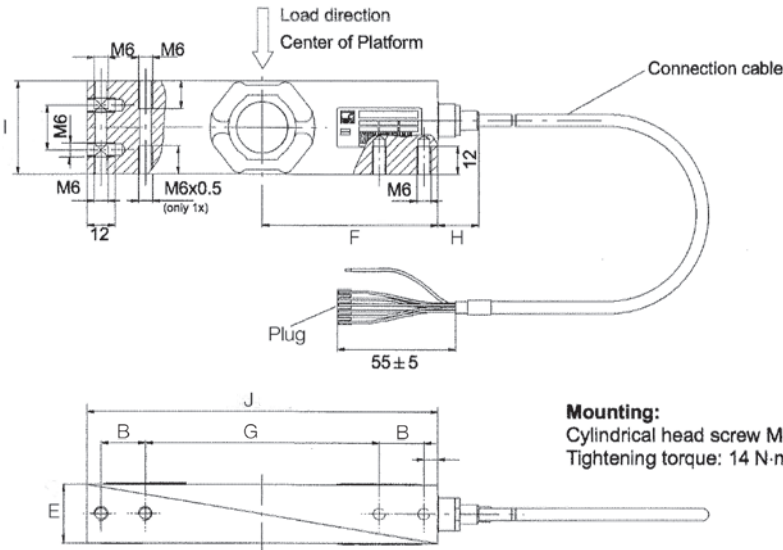


Order Information

Load Rating	Part #	Est. Weight	Price
10 kg	101915	3 lb	\$825.00
20 kg	101916	3 lb	\$825.00
50 kg	101917	3 lb	\$825.00
100 kg	101918	3 lb	\$825.00

Dimensions

Rated Capacity	B	E	F	G	H	I	J
kg/mm							
10 to 100	19.0	25.0	75.0	100.0	17.5	40.0	150.0



**Mounting:**  
Cylindrical head screw M6-10.9  
Tightening torque: 14 N·m

Interchangeable Products

RICE LAKE WEIGHING SYSTEMS

**RLPWM15HE**.....page 155

FLINTEC®

**PC4**..... page 217

Specifications

**Full Scale Output:**

2.0 mV/V

**Output Resistance:**

350 (± 10) ohm

**Input Resistance:**

380 (± 15) ohm

**Material/Finish:**

Stainless steel

**Temperature:**

Compensated:

14 °F to 104 °F (-10 °C to 40 °C)

Operating:

0 °F to 150 °F (-18 °C to 65 °C)

**Seal Type:**

Hermetically sealed, IP69K

**Safe Overload:**

150% full scale

**Rated Excitation:**

5 to 15 VDC

**Combined Error:**

0.02% full scale

**Insulation Resistance:**

1,000 megohm

**Cable Length:**

10 ft

**Cable Diameter:**

0.212 in

PVC jacket

**Cable Color Code:**

Blue +Excitation

Black -Excitation

White +Signal

Red -Signal

Green +Sense

Grey -Sense

**Warranty:**

One-year limited

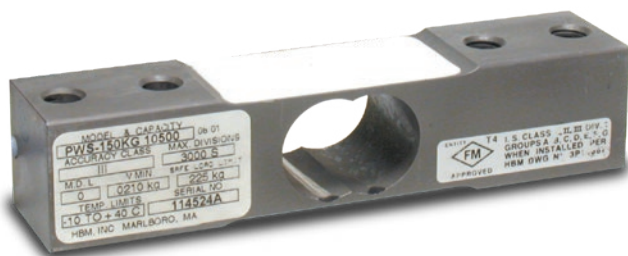
**Approvals:**

NTEP

OIML

FM





Picture is a representation of actual product.

#### Approvals

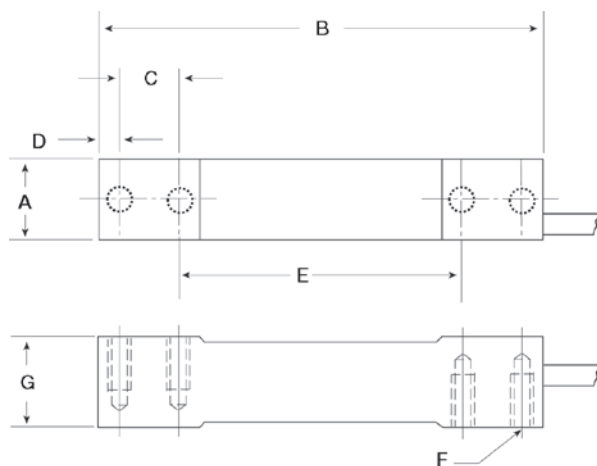


#### Order Information

Load Rating	Part #	Est. Weight	Price
7 kg	36185	2 lb	\$525.00
10 kg	36186	2 lb	\$525.00
15 kg	36187	2 lb	\$525.00
30 kg	36188	2 lb	\$525.00
60 kg	36189	2 lb	\$525.00
100 kg	68551	2 lb	\$525.00
150 kg	69345	2 lb	\$525.00

#### Dimensions

Rated Capacity	A	B	C	D	E	F	G
kg/mm							
7 to 15	30.2	139.7	19.1	6.4	88.9	1/4-20 UNC	19.1
30 to 60	30.2	139.7	19.1	6.4	88.9	1/4-20 UNC	23.9
100 to 150	30.2	139.7	22.3	7.8	79.2	3/8-16 UNC	30.7



#### Interchangeable Products

RICE LAKE WEIGHING SYSTEMS

RL1380.....page 166

#### Specifications

##### Full Scale Output:

2.0 mV/V

##### Output Resistance:

359 (± 10) ohm

##### Input Resistance:

390 (± 15) ohm

##### Material/Finish:

Stainless steel

##### Temperature:

Compensated:

14 °F to 104 °F (-10 °C to 40 °C)

Operating:

0 °F to 150 °F (-18 °C to 65 °C)

##### Seal Type:

Environmentally sealed, IP67

##### Safe Overload:

150% full scale

##### Rated Excitation:

5 to 10 VDC (15 V maximum)

##### Combined Error:

0.03% full scale

##### Insulation Resistance:

5,000 megohm

##### Deflection at Capacity:

< 0.4 mm full scale

##### Cable Length:

10 ft

##### Cable Diameter:

0.190 in

Polyurethane jacket

##### Cable Color Code:

Green +Excitation

Black -Excitation

White +Signal

Red -Signal

Yellow Shield

##### Warranty:

One-year limited

##### Approvals:

FM

NTEP

OIML

