

## SLP-5 Configuration for WM-Ai and IP-Ai Chinese BIG5 Characters

The WM-Ai auto wrapper and IP-Ai pre-pack scale can display and print PLU information in Chinese BIG5 characters, also known as Traditional, but all menus, etc. remain in English. Chinese characters are entered in SLP-5 and sent to the wrapper and scale; Chinese characters cannot be entered at the wrapper and scale. Refer to the following procedure to configure SLP-5.

Refer to the WM-Ai auto wrapper and IP-Ai pre-pack scale release notes for details to load the firmware.

### WRAPPER AND SCALE SETUP

Update the firmware for the WM-Ai auto wrapper and IP-Ai to version **C2225x**. Refer to the C2225x release notes for details.

### SLP-5 SETUP

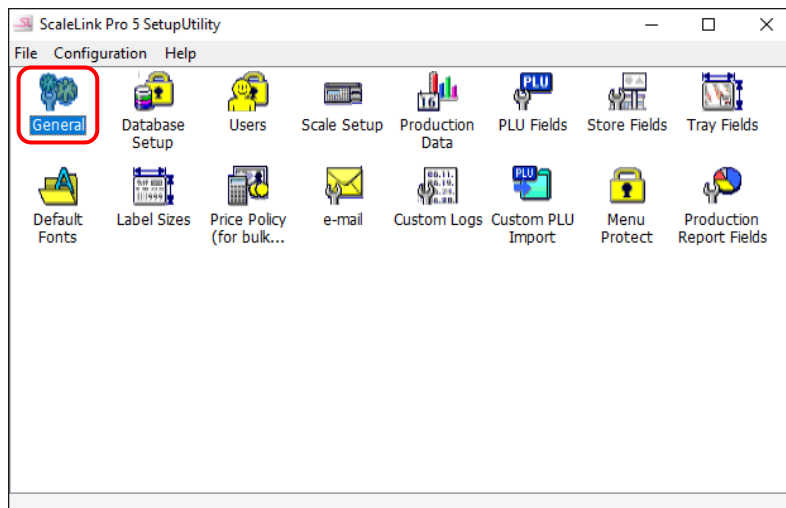
Because the character size is fixed in the label format PLU description, it is only necessary to enable one Chinese BIG5 font.

- 32x32 (Chinese) - Large (Item Name)

The following Chinese BIG5 character sizes are also available. These should only be added if Uni-3, Uni-5, Uni-7, or WM-Nano models are in the same installation. These models require the character sizes to be specified in the PLU description and sent from SLP-5.

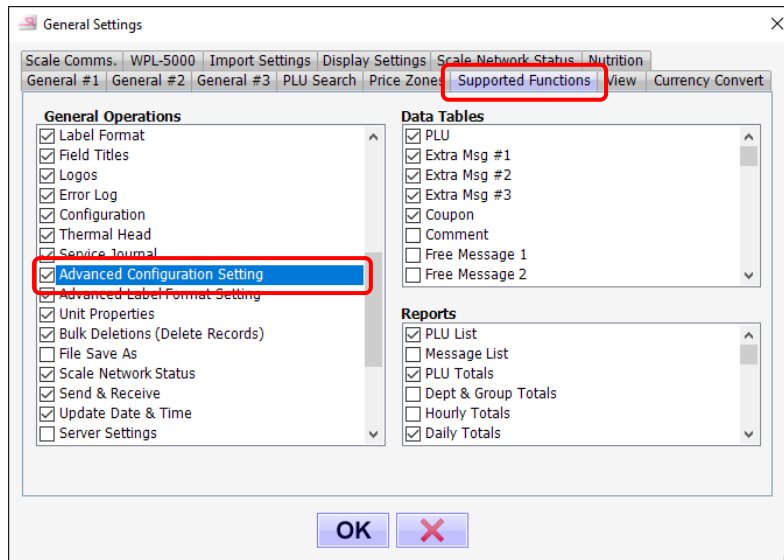
- 48x48 (Chinese) - Very Large (Item Name)
- 24x24 (Chinese) - Medium (Messages)
- 16x16 (Chinese) - Small (Ingredients)

**Note:** English (ASCII) and Chinese BIG5 (traditional) characters cannot be mixed on the same line. If both are present only the first character type on the line is used.

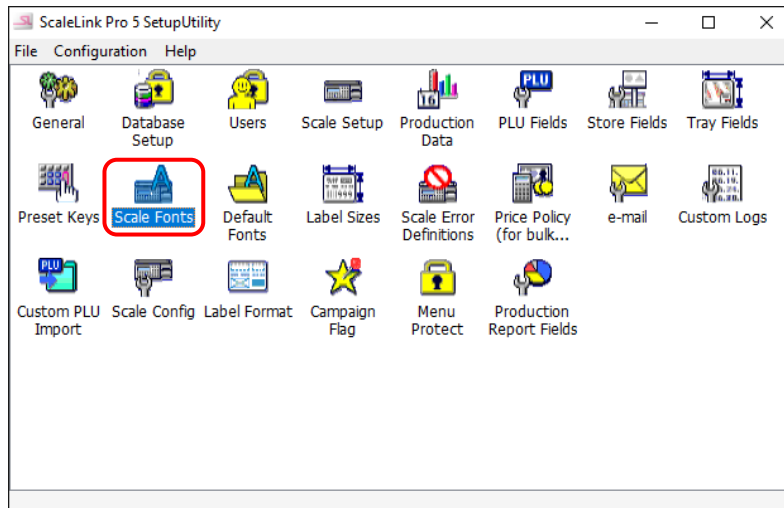


1. Open **Setup Utility**.
2. Select "General".

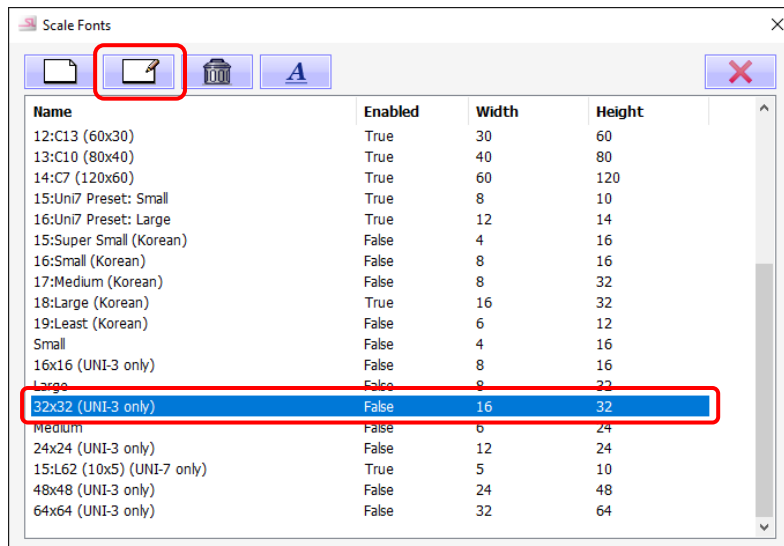
## SLP-5 Configuration for WM-Ai and IP-Ai Chinese BIG5 Characters



3. Select "Supported Functions".
4. Enable "Advanced Configuration Setting".
5. Select "OK".



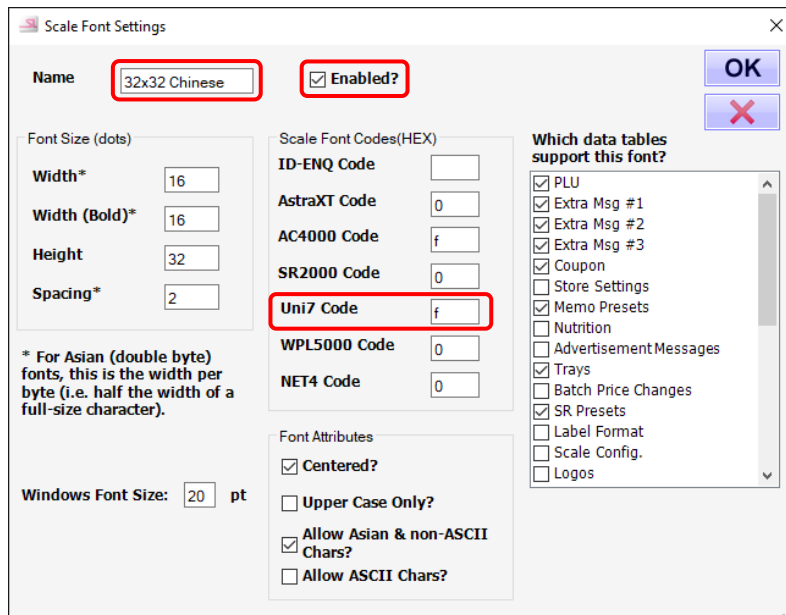
6. Select "Scale Fonts"



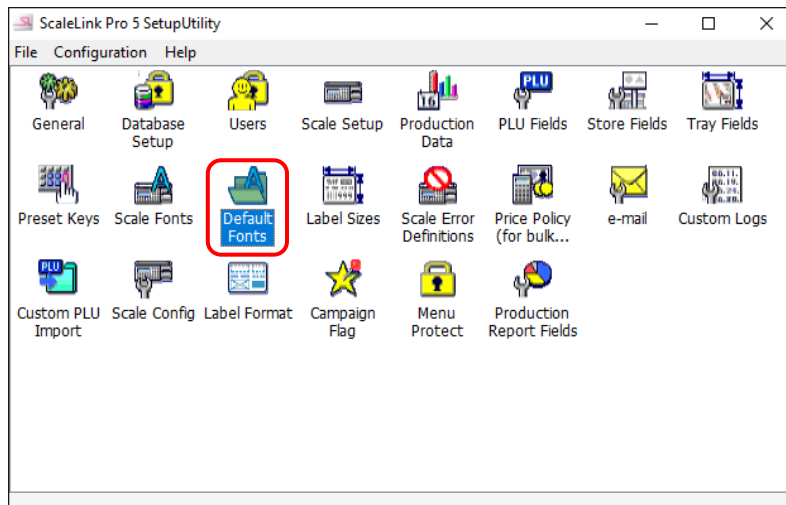
The list of "Scale Fonts" is displayed.

7. Choose "32x32 (Uni-3 only)".
8. Click "Edit".

## SLP-5 Configuration for WM-Ai and IP-Ai Chinese BIG5 Characters



9. Rename as "32x32 (Chinese)".
10. Check "Enabled?".
11. Set the Uni-7 "Scale Font Codes (HEX)" value as "f" (same value as AC-4000).
12. Click "OK".
13. If the Uni-3, Uni-5, Uni-7, or WM-Nano are also installed, repeat for the remaining three Chinese fonts:
  - 16x16 (Chinese) = "6"
  - 24x24 (Chinese) = "c"
  - 48x48 (Chinese) = "1f"



14. Select "Default Fonts".

This is to set which line is Chinese BIG5 and which line is English.

## SLP-5 Configuration for WM-Ai and IP-Ai Chinese BIG5 Characters

At the "Edit Default Fonts" screen select the font for each line.

Select one line for Chinese characters and the other for standard English characters.

15. Set "Line 1" to size "7:C25" or "5:C31". Change "Line 2" to "32x32 (Chinese)".

16. Select "OK" when finished.

17. Select "General" again.

18. Enter "Chinese" in the "Customer Code" field.

19. Select "OK" when finished.

## SLP-5 Configuration for WM-Ai and IP-Ai Chinese BIG5 Characters

**Edit Label Format Configuration setup**

**General Settings**

Unit Packet Size: 32

Units per Label: 63

Min. Label No.: 1

Max. Label No.: 999

Max. Label Width: 800

Max. Label Height: 2000

Default Title Font Code (Hex): 3

Default Label Width: 600

Default Label Height: 590

Max. Logo Memory Area\*: 1024000

Max. Title No.: 200

\* Not applicable for EMZ,FDP,WPL and some AC-4000 models

12 dot/mm printer?

Include Name Unit in Label?

**Label Format Data**

**File Maintenance**

Scale Model: WM-AI/IP-AI

20. Select 'Label Format'.
21. Select "WM-Ai / IP-Ai".
22. Select "Unit Properties Setup".

**Edit Unit Property Definition**

Name: Font Family

Property Type: UserDefined

BCD Format?  Is Display?

Maximum: 255

Minimum: 0

Default Value: 0

Digits After Decimal Point: 0

**Property Values (Leave blank if any value can be set)**

Value	Title
*0000	None
0001	Courie
0002	Helvetica
0003	Lucida Bright
0004	Lucida
0005	Times
0016	Free Scans
0019	Rockwell
0032	BIG5
0033	BIG5 Bold
0144	BIG5 Half
0145	BIG5 Half Bold

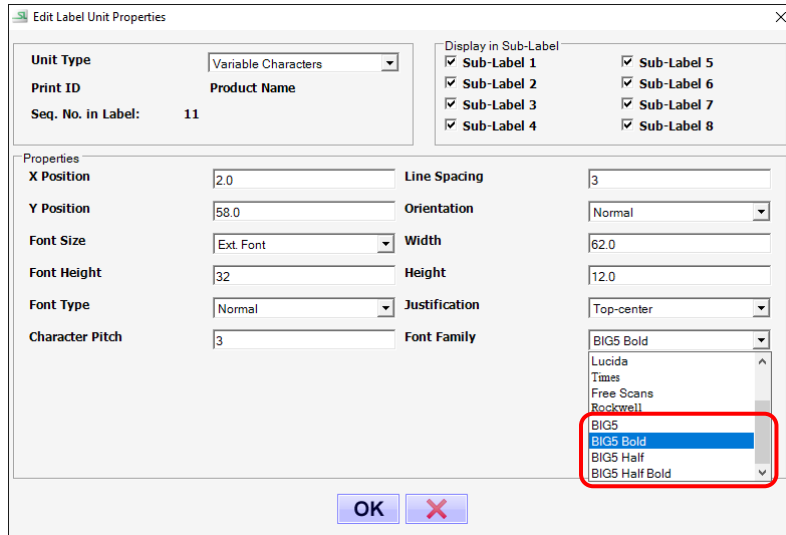
\*:Default Value

OK

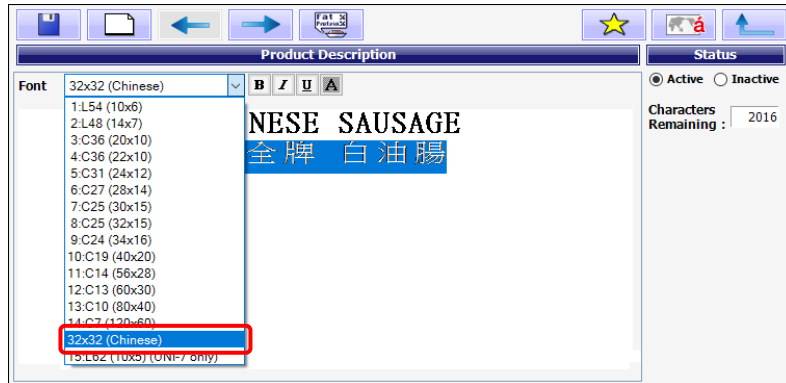
23. Select "Font Family".
24. Select "New".
25. Add the four Chinese fonts:
  - 32: BIG5
  - 33: BIG5 Bold
  - 144: BIG5 Half
  - 145: BIG5 Half Bold
26. Click "OK".
27. Click "X".
28. Click "Save".
29. Click "X".

This completes the Setup Utility configuration for Chinese characters.

# SLP-5 Configuration for WM-Ai and IP-Ai Chinese BIG5 Characters



1. Open **Maintenance Utility**.
2. Open the label format.
3. Edit the Product Name properties as follows.
  - Font Size: Ext. Font
  - Font Height: 24~32
  - Font Family: BIG5, BIG5 Bold, BIG5 Half, or BIG5 Half Bold



1. Open **ScaleLink Pro 5**.
2. Edit a PLU.
3. When editing the description, confirm the second line is set as "32x32 (Chinese)". The first line is set as a standard English font.



Ext. Font, BIG5 Bold

Font Height = 24 (SLP-5), 18 [Hex](Ai)

Ext. Font, BIG5 Bold

Font Height = 32 (SLP-5), 20 [Hex](Ai)

## SLP-5 Configuration for WM-Ai and IP-Ai Chinese BIG5 Characters



© Rice Lake Weighing Systems Specifications subject to change without notice.  
Rice Lake Weighing Systems is an ISO 9001 registered company.

230 W. Coleman St. • Rice Lake, WI 54868 • USA  
U.S. 800-472-6703 • Canada/Mexico 800-321-6703 • International 715-234-9171 • Europe +31 (0)26 472 1319

[www.ricelake.com/retail](http://www.ricelake.com/retail)

[www.ricelake.mx](http://www.ricelake.mx)

[www.ricelake.eu](http://www.ricelake.eu)

[www.ricelake.co.in](http://www.ricelake.co.in)