

WHEELCHAIR SCALES

NEW

350-ADA-1 DUAL-RAMP ADA-COMPLIANT WHEELCHAIR SCALE

Rice Lake's 350-ADA-1 is designed with accessibility and precision in mind. This ADA-compliant wheelchair scale provides safe, accurate weighing for patients, including those with mobility challenges. The low-profile ramps and spacious platform make transfers easy and stress free, while the sturdy construction ensures long-lasting reliability in any clinical or healthcare setting.

FEATURES

- ADA-compliant
- Large LCD display
- Antimicrobial keypad
- Dual ramp
- Metal, nonslip platform
- Supports bariatric patient weighing
- 2-in edge protection
- 1:8 gentle slope
- Two wheels for easy transport
- Motiontrap™ movement compensation technology
- Unit of measure toggle or locking
- EMR capable
- Serial and USB data communication ports
- Tare function
- Hold function
- Body mass index (BMI) function
- Factory calibrated
- Easy to store, folded depth is 11.75 in (29.8 cm)

SPECIFICATIONS

Capacity:
1,000 × 0.2 lb (450 × 0.1 kg)

Platform Dimensions:
(L × W × H)
40.60 × 32.00 × 4.50 in

Power:
9 VDC, provided by six AA alkaline batteries (included) or AC adapter (optional)

Battery Type:
Six AA alkaline (included)

Battery Use:
25 hours of continuous use with batteries
Automatic power-off can be configured

Display:
Five-digit LCD display, 0.75 in (1.9 cm) digit height

Temperature:
Operating:
50 °F to 104 °F (10 °C to 40 °C)

Warranty:
Two-year limited





WHEELCHAIR SCALE

MODEL	CAPACITY	COMMUNICATION	PART #
350-ADA-1	1,000 × 0.2lb (450 × 0.1 kg)	USB	231628

OPTIONS

DESCRIPTION	PART #
9VDC adapter, 100-240V, NEMA 1-15 plug, cULus power supply*	133077

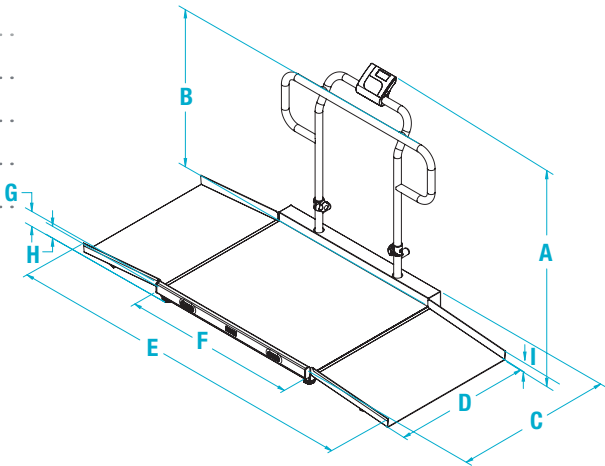
*NEMA 1-15 Plug 

SHIPPING WEIGHT

MODEL #	PART #	L (IN)	W (IN)	H (IN)	PACKAGE WGT. (LB)	DIM WGT. (LB)	SHIPPING WGT. (LB)
350-ADA-1	231628	43	48	25	145	NA	287

DIMENSIONS

	INCHES	CENTIMETERS		INCHES	CENTIMETERS
A	44.40	113.0	F	40.60	103.0
B	35.90	91.0	G	4.50	11.5
C	36.40	92.5	H	2.50	6.4
D	32.00	81.3	I	2.00	5.1
E	83.50	212.0			



350-10-3M

DUAL-RAMP WHEELCHAIR SCALE

Rice Lake's 350-10-3M is a dual-ramp, metal wheelchair scale in the 350-10 Series family. This durable scale offers accurate, high capacity weighing for a wide range of patients. The 350-10-3M has a large, stable scale base with a nonslip surface to ensure safety during patient weighing. Easy to set up, this foldable scale can be quickly moved on two heavy-duty rear wheels for efficient patient weighing in different locations.

FEATURES

- Large LCD display
- Antimicrobial keypad
- Two wheels for easy transport
- Dual ramp
- Metal, nonslip platform
- Motiontrap™ movement compensation technology
- Unit of measure toggle or locking
- EMR capable
- Serial and USB data communication ports
- Wireless personal area network (WPAN) option available
- Tare function
- Hold function
- Body mass index (BMI) function
- Factory calibrated
- Easy to store, folded depth is 11.75 in (29.8 cm)

SPECIFICATIONS

Capacity:
1,000 × 0.2 lb (450 × 0.1 kg)

Platform Dimensions:
(L × W × H)
29.50 × 31.50 × 3.15 in

Power:
9 VDC, provided by six
AA alkaline batteries (included)
or AC adapter (optional)

Battery Type:
Six AA alkaline (included)

Battery Use:
25 hours of continuous use with batteries
Automatic power-off can be configured

Display:
Five-digit LCD display, 0.75 in (1.9 cm)
digit height

Temperature:
Operating:
50 °F to 104 °F (10 °C to 40 °C)

Warranty:
Two-year limited





WHEELCHAIR SCALE

PG
37

MODEL	CAPACITY	COMMUNICATION	PART #
350-10-3M	1,000 × 0.2lb (450 × 0.1 kg)	USB	193956
350-10-3MBLE	1,000 × 0.2lb (450 × 0.1 kg)	WPAN	203910

OPTIONS

DESCRIPTION	PART #
9VDC adapter, 100-240V, NEMA 1-15 plug, cULus power supply*	133077
9VDC adapter, 100-240V, NEMA 1-15 plug, medical grade power supply	115655
9VDC adapter, 100-240V, CEE 7/16 plug, medical grade power supply**	102508

*NEMA 1-15 Plug



**CEE 7/16 Plug

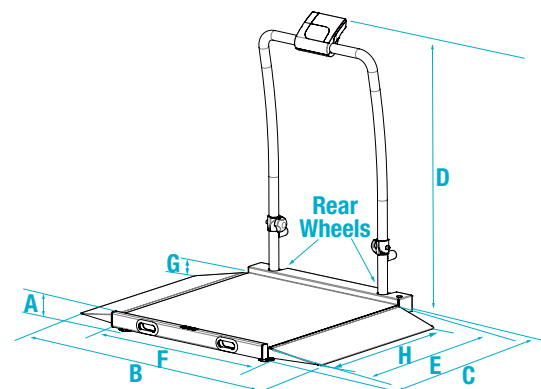


SHIPPING WEIGHT

MODEL #	PART #	L (IN)	W (IN)	H (IN)	PACKAGE WGT. (LB)	DIM WGT. (LB)	SHIPPING WGT. (LB)
350-10-3M	193956	51	42	14	102	216	216
350-10-3MBLE	203910	51	42	14	102	216	216

DIMENSIONS

	INCHES	CENTIMETERS		INCHES	CENTIMETERS
A	3.15	8.0	E	31.50	80.0
B	47.70	121.2	F	29.50	74.9
C	37.80	96.0	G	2.40	6.1
D	45.30	115.1	H	27.20	69.1



350-10-2

SINGLE-RAMP WHEELCHAIR SCALE

Rice Lake's 350-10-2 single-ramp wheelchair scale with handrail allows high capacity, accurate weighing for a wide range of patients. Convenient keypad tare reduces errors and increases efficiency. Foldable and lightweight, this sturdy scale is easily transported on two heavy-duty rear wheels to any location.

FEATURES

- Large LCD display
- Antimicrobial keypad
- Two wheels for easy transport
- Single ramp
- Nonslip platform
- Motiontrap™ movement compensation technology
- Unit of measure toggle or locking
- EMR capable
- Serial and USB data communication ports
- Wireless personal area network (WPAN) option available
- Tare function
- Hold function
- BMI (body mass index) function
- Factory calibrated
- Easy to store, folded depth is 11.75 in (29.8 cm)

SPECIFICATIONS

Capacity:

1,000 × 0.2 lb (450 × 0.1 kg)

Platform Dimensions Without Ramp:

(L × W × H)
29.50 × 32.00 × 2.40 in

Power:

9 VDC, provided by six
AA alkaline batteries (included)
or AC adapter (optional)

Battery Type:

Six AA alkaline (included)

Battery Use:

25 hours of continuous use with batteries
Automatic power-off can be configured

Display:

Five-digit LCD display, 0.75 in (1.9 cm)
digit height

Temperature:

Operating:
50 °F to 104 °F (10 °C to 40 °C)

Warranty:

Two-year limited





WHEELCHAIR SCALE

MODEL	CAPACITY	COMMUNICATION	PART #
350-10-2	1,000 × 0.2lb (450 × 0.1 kg)	USB	141445
350-10-2BLE	1,000 × 0.2lb (450 × 0.1 kg)	WPAN	194739

OPTIONS

DESCRIPTION	PART #
9VDC adapter, 100-240V, NEMA 1-15 plug, cULus power supply*	133077
9VDC adapter, 100-240V, NEMA 1-15 plug, medical grade power supply	115655
9VDC adapter, 100-240V, CEE 7/16 plug, medical grade power supply**	102508

*NEMA 1-15 Plug



**CEE 7/16 Plug

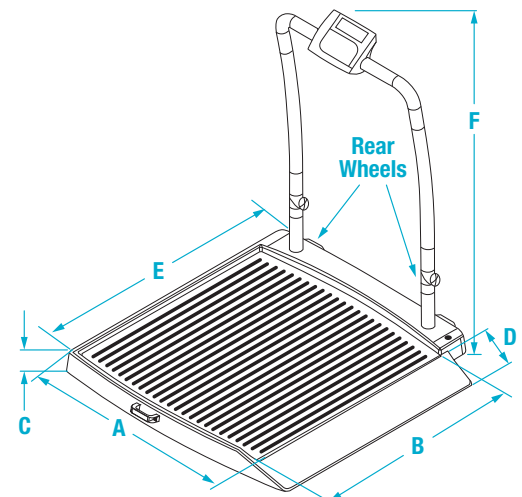


SHIPPING WEIGHT

MODEL #	PART #	L (IN)	W (IN)	H (IN)	PACKAGE WGT. (LB)	DIM WGT. (LB)	SHIPPING WGT. (LB)
350-10-2	141445	42	41	14	90	174	174
350-10-2BLE	194739	42	41	14	90	174	174

DIMENSIONS

	INCHES	CENTIMETERS		INCHES	CENTIMETERS
A	29.50	74.9	D	9.30	23.6
B	32.00	81.3	E	37.50	95.3
C	2.40	6.1	F	45.00	114.3



350-10-3

DUAL-RAMP WHEELCHAIR SCALE

Rice Lake's 350-10-3 dual-ramp wheelchair scale with handrail allows high-capacity, accurate weighing for a wide range of patients. Convenient keypad tare reduces errors and increases efficiency. Foldable and lightweight, this sturdy scale is easily transported on two heavy-duty rear wheels to any location.

PG
40

FEATURES

- Large LCD display
- Antimicrobial keypad
- Two wheels for easy transport
- Dual ramp
- Nonslip platform
- Motiontrap™ movement compensation technology
- Unit of measure toggle or locking
- EMR capable
- Serial and USB data communication ports
- Wireless personal area network (WPAN) option available
- Tare function
- Hold function
- Body mass index (BMI) function
- Factory calibrated
- Easy to store, folded depth is 11.75 in (29.8 cm)

SPECIFICATIONS

Capacity:

1,000 × 0.2 lb (450 × 0.1 kg)

Platform Dimensions Without Ramps:

(L × W × H)

29.50 × 32.00 × 2.40 in

Power:

9 VDC, provided by six AA alkaline batteries (included) or AC adapter (optional)

Battery Type:

Six AA alkaline (included)

Battery Use:

25 hours of continuous use with batteries
Automatic power-off can be configured

Display:

Five-digit LCD display, 0.75 in (1.9 cm) digit height

Temperature:

Operating:
50 °F to 104 °F (10 °C to 40 °C)

Warranty:

Two-year limited





WHEELCHAIR SCALE

MODEL	CAPACITY	COMMUNICATION	PART #
350-10-3	1,000 × 0.2lb (450 × 0.1 kg)	USB	141447
350-10-3BLE	1,000 × 0.2lb (450 × 0.1 kg)	WPAN	194736

OPTIONS

DESCRIPTION	PART #
9VDC adapter, 100-240V, NEMA 1-15 plug, cULus power supply*	133077
9VDC adapter, 100-240V, NEMA 1-15 plug, medical grade power supply	115655
9VDC adapter, 100-240V, CEE 7/16 plug, medical grade power supply**	102508

*NEMA 1-15 Plug



**CEE 7/16 Plug

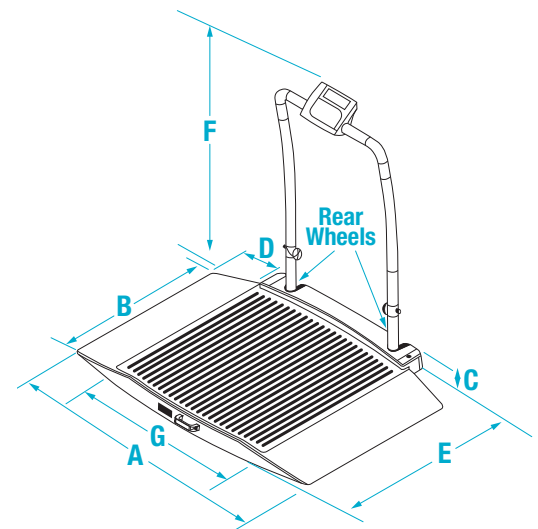


SHIPPING WEIGHT

MODEL #	PART #	L (IN)	W (IN)	H (IN)	PACKAGE WGT. (LB)	DIM WGT. (LB)	SHIPPING WGT. (LB)
350-10-3	141447	51	42	14	102	216	216
350-10-3BLE	194736	51	42	14	102	216	216

DIMENSIONS

	INCHES	CENTIMETERS		INCHES	CENTIMETERS
A	48.50	123.2	E	38.00	96.5
B	32.00	81.3	F	45.00	114.3
C	2.40	6.1	G	29.50	74.9
D	9.30	23.6			



WITH SEAT AND
HANDRAIL

350-10-4

DUAL-RAMP WHEELCHAIR SCALE WITH SEAT

Rice Lake's 350-10-4 dual-ramp wheelchair scale with seat and handrail allows high capacity, accurate weighing for patients requiring extra support. The padded seat easily tucks away, allowing this model to function as either a wheelchair or chair scale. Convenient keypad tare reduces errors and increases efficiency. Foldable and lightweight, this sturdy scale is easily transported on two heavy-duty rear wheels to any location.

PG
42



*Fold-away
padded seat*

FEATURES

- Large LCD display
- Antimicrobial keypad
- Two wheels for portability
- Dual ramp
- Nonslip platform
- Fold-away padded seat with backrest
- Motiontrap™ movement compensation technology
- Unit of measure toggle or locking
- EMR capable
- Serial and USB data communication ports
- Wireless personal area network (WPAN) option available
- Tare function
- Hold function
- Body mass index (BMI) function
- Factory calibrated
- Easy to store, folded depth is 11.75 in (29.8 cm)

SPECIFICATIONS

Capacity:

1,000 × 0.2 lb (450 × 0.1 kg)

Platform Dimensions Without Ramps:

(L × W × H)
29.50 × 32.00 × 2.40 in

Power:

9 VDC, provided by six
AA alkaline batteries (included)
or AC adapter (optional)

Battery Type:

Six AA alkaline (included)

Battery Use:

25 hours of continuous use with batteries
Automatic power-off can be configured

Display:

Five-digit LCD display, 0.75 in (1.9 cm)
digit height

Temperature:

Operating:
50 °F to 104 °F (14 °C to 40 °C)

Warranty:

Two-year limited



WHEELCHAIR SCALE

MODEL	CAPACITY	COMMUNICATION	PART #
350-10-4	1,000 × 0.2lb (450 × 0.1 kg)	USB	141448
350-10-4BLE	1,000 × 0.2lb (450 × 0.1 kg)	WPAN	194737

OPTIONS

DESCRIPTION	PART #
9VDC adapter, 100-240V, NEMA 1-15 plug, cULus power supply*	133077
9VDC adapter, 100-240V, NEMA 1-15 plug, medical grade power supply	115655
9VDC adapter, 100-240V, CEE 7/16 plug, medical grade power supply**	102508

*NEMA 1-15 Plug



**CEE 7/16 Plug

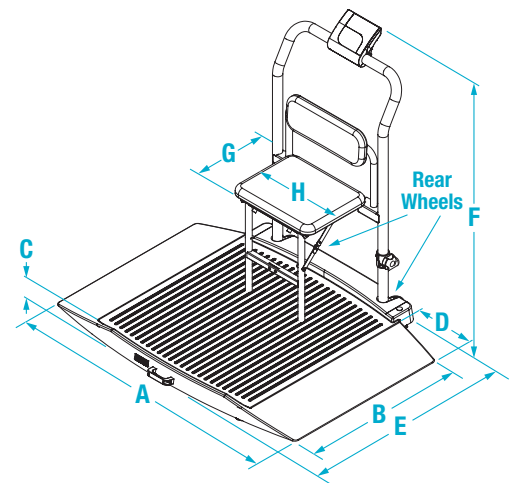


SHIPPING WEIGHT

MODEL #	PART #	L (IN)	W (IN)	H (IN)	PACKAGE WGT. (LB)	DIM WGT. (LB)	SHIPPING WGT. (LB)
350-10-4	141448	51	43	21	132	332	332
350-10-4BLE	194737	51	43	21	132	332	332

DIMENSIONS

	INCHES	CENTIMETERS		INCHES	CENTIMETERS
A	48.50	123.2	E	38.00	96.5
B	32.00	81.3	F	45.00	114.3
C	2.40	6.1	G	11.42	29.0
D	9.30	23.6	H	15.75	40.0



350-10-7

SINGLE-RAMP WHEELCHAIR PLATFORM SCALE

Rice Lake's 350-10-7 single-ramp wheelchair platform scale allows high-capacity, accurate weighing for a wide range of patients. Convenient keypad tare reduces errors and increases efficiency. This sturdy scale is easily transported on two heavy-duty rear wheels to any location.

FEATURES

- Large LCD display
- Antimicrobial keypad
- Two wheels for easy transport
- Single ramp
- Nonslip platform
- Motiontrap™ movement compensation technology
- Unit of measure toggle or locking
- EMR capable
- Serial and USB data communication ports
- Wireless personal area network (WPAN) option available
- Tare function
- Hold function
- Body mass index (BMI) function
- Factory calibrated

SPECIFICATIONS

Capacity:

1,000 × 0.2 lb (450 × 0.1 kg)

Platform Dimensions Without Ramp:

(L × W × H)
29.50 × 32.00 × 2.40 in

Power:

9 VDC, provided by six AA alkaline batteries (included) or AC adapter (optional)

Battery Type:

Six AA alkaline (included)

Battery Use:

25 hours of continuous use with batteries
Automatic power-off can be configured

Cable Length:

7 ft (2.1 m) cable between scale base and indicator

Display:

Five-digit LCD display, 0.75 in (1.9 cm) digit height

Temperature:

Operating:
50 °F to 104 °F (10 °C to 40 °C)

Warranty:

Two-year limited





WHEELCHAIR SCALE

PG
45

MODEL	CAPACITY	COMMUNICATION	PART #
350-10-7	1,000 × 0.2lb (450 × 0.1 kg)	USB	141446
350-10-7BLE	1,000 × 0.2lb (450 × 0.1 kg)	WPAN	194738

OPTIONS

DESCRIPTION	PART #
9VDC adapter, 100-240V, NEMA 1-15 plug, cULus power supply*	133077
9VDC adapter, 100-240V, NEMA 1-15 plug, medical grade power supply	115655
9VDC adapter, 100-240V, CEE 7/16 plug, medical grade power supply**	102508

*NEMA 1-15 Plug



**CEE 7/16 Plug

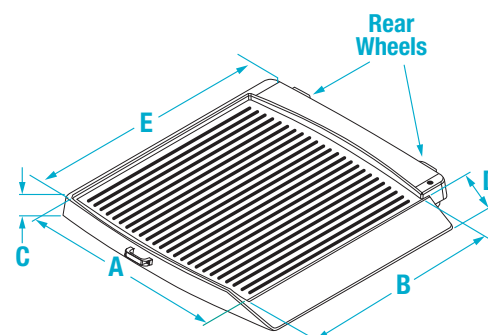


SHIPPING WEIGHT

MODEL #	PART #	L (IN)	W (IN)	H (IN)	PACKAGE WGT. (LB)	DIM WGT. (LB)	SHIPPING WGT. (LB)
350-10-7	141446	45	44	7	78	100	100
350-10-7BLE	194738	45	44	7	78	100	100

DIMENSIONS

	INCHES	CENTIMETERS		INCHES	CENTIMETERS
A	29.50	74.9	D	9.30	23.6
B	32.00	81.3	E	37.50	95.3
C	2.40	6.1			



350-10-8

DUAL-RAMP WHEELCHAIR PLATFORM SCALE

Rice Lake's 350-10-8 dual-ramp wheelchair platform scale allows high-capacity, accurate weighing for a wide range of patients. Convenient keypad tare reduces errors and increases efficiency. This sturdy scale is easily transported on two heavy-duty rear wheels to any location.

FEATURES

- Large LCD display
- Antimicrobial keypad
- Two wheels for easy transport
- Dual ramp
- Nonslip platform
- Motiontrap™ movement compensation technology
- Unit of measure toggle or locking
- EMR capable
- Serial and USB data communication ports
- Wireless personal area network (WPAN) option available
- Tare function
- Hold function
- Body mass index (BMI) function
- Factory calibrated

SPECIFICATIONS

Capacity:

1,000 × 0.2 lb (450 × 0.1 kg)

Platform Dimensions Without Ramps:

(L × W × H)

29.50 × 32.00 × 2.40 in

Power:

9 VDC, provided by six AA alkaline batteries (included) or AC adapter (optional)

Battery Type:

Six AA alkaline (included)

Battery Use:

25 hours of continuous use with batteries
Automatic power-off can be configured

Cable Length:

7 ft (2.1 m) cable between scale base and indicator

Display:

Five-digit LCD display, 0.75 in (1.9 cm) digit height

Temperature:

Operating:
50 °F to 104 °F (10 °C to 40 °C)

Warranty:

Two-year limited





WHEELCHAIR SCALE

PG
47

MODEL	CAPACITY	COMMUNICATION	PART #
350-10-8	1,000 × 0.2lb (450 × 0.1 kg)	USB	141449
350-10-8BLE	1,000 × 0.2lb (450 × 0.1 kg)	WPAN	194735

OPTIONS

DESCRIPTION	PART #
9VDC adapter, 100-240V, NEMA 1-15 plug, cULus power supply*	133077
9VDC adapter, 100-240V, NEMA 1-15 plug, medical grade power supply	115655

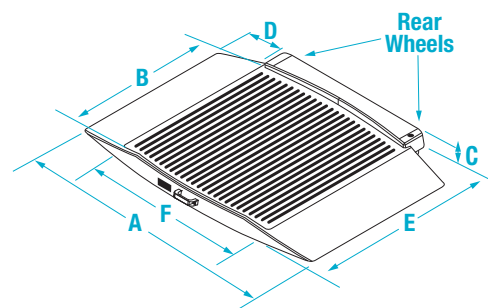
*NEMA 1-15 Plug  **CEE 7/16 Plug 

SHIPPING WEIGHT

MODEL #	PART #	L (IN)	W (IN)	H (IN)	PACKAGE WGT. (LB)	DIM WGT. (LB)	SHIPPING WGT. (LB)
350-10-8	141449	53	45	7	86	121	121
350-10-8BLE	194735	53	45	7	86	121	121

DIMENSIONS

	INCHES	CENTIMETERS		INCHES	CENTIMETERS
A	48.50	123.2	D	9.30	23.6
B	32.00	81.3	E	38.00	96.5
C	2.40	6.1	F	29.50	74.9



34 INCHES WIDE

RL-350-5

SINGLE-RAMP PORTABLE BARIATRIC WHEELCHAIR SCALE

Rice Lake's RL-350-5 single-ramp portable bariatric wheelchair scale allows high-capacity, accurate weighing for patients who are unable to be transported to a scale. Featuring a 34-inch (86 centimeters) scale base with single ramp, wheelchairs can easily be wheeled on and off the scale. Convenient keypad tare reduces errors and increases efficiency. For added safety, this scale features an anti-slip rubber surface and raised edges on the weighing platform.

PG
48

FEATURES

- Large LCD display
- Antimicrobial keypad
- Integrated handles and wheels for easy transport
- Large, stable scale base
- Metal, nonslip platform
- Motiontrap™ movement compensation technology
- Unit of measure toggle or locking
- EMR capable
- Serial and USB data communication ports
- Wireless personal area network (WPAN) option available
- Tare function
- Hold function
- Body mass index (BMI) function
- Factory calibrated

SPECIFICATIONS

Capacity:

1,000 × 0.2 lb (450 × 0.1 kg)

Platform Dimensions Without Ramp:

(L × W × H)
34.00 × 34.00 × 2.20 in

Power:

9 VDC, provided by six AA alkaline batteries (included) or AC adapter (optional)

Battery Type:

Six AA alkaline (included)

Battery Use:

25 hours of continuous use with batteries
Automatic power-off can be configured

Cable Length:

9 ft (2.7 m) cable between scale base and indicator

Display:

Five-digit LCD display, 0.75 in (1.9 cm) digit height

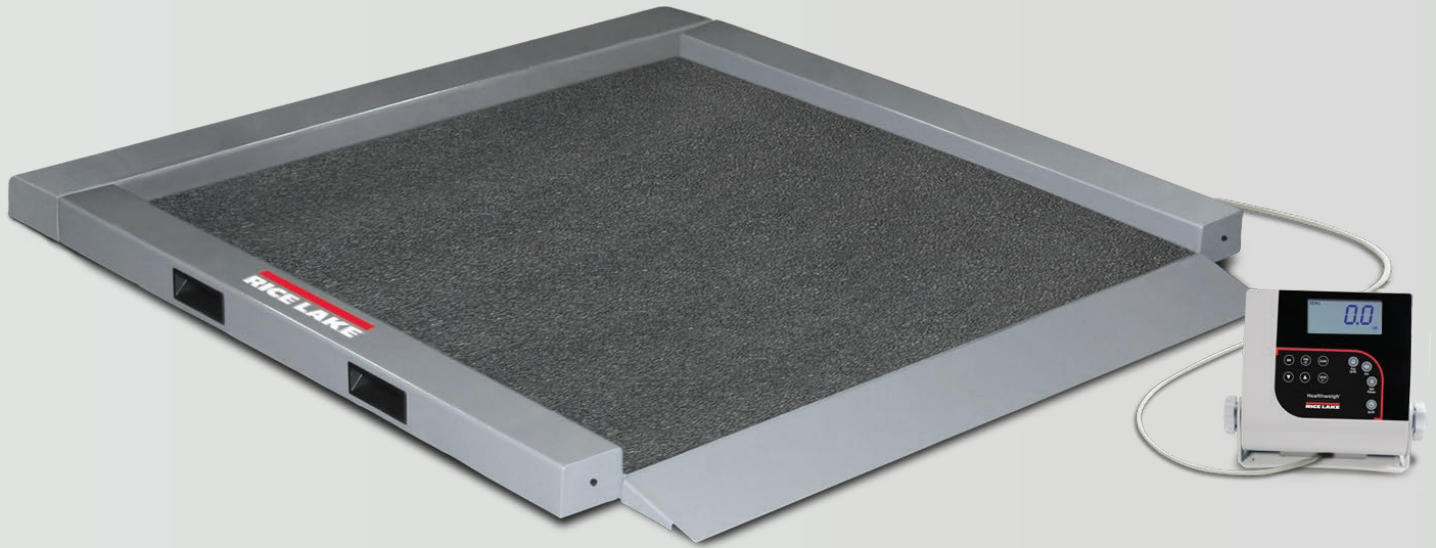
Temperature:

Operating:
50 °F to 104 °F (10 °C to 40 °C)

Warranty:

Two-year limited





WHEELCHAIR SCALE

MODEL	CAPACITY	COMMUNICATION	PART #
RL-350-5	1,000 × 0.2lb (450 × 0.1 kg)	USB	150703
RL-350-5BLE	1,000 × 0.2lb (450 × 0.1 kg)	WPAN	205976

OPTIONS

DESCRIPTION	PART #
9VDC adapter, 100-240V, NEMA 1-15 plug, cULus power supply*	133077
9VDC adapter, 100-240V, CEE 7/16 plug, medical grade power supply**	102508

*NEMA 1-15 Plug



**CEE 7/16 Plug

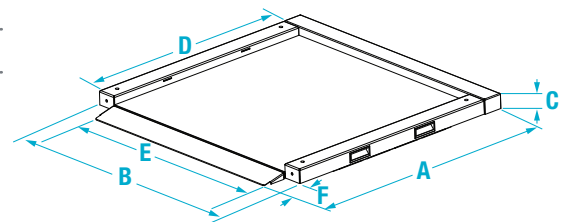


SHIPPING WEIGHT

MODEL #	PART #	L (IN)	W (IN)	H (IN)	PACKAGE WGT. (LB)	DIM WGT. (LB)	SHIPPING WGT. (LB)
RL-350-5	150703	43	43	11	154	147	154
RL350-5BLE	205976	43	43	11	154	147	154

DIMENSIONS

	INCHES	CENTIMETERS		INCHES	CENTIMETERS
A	41.00	104.1	D	34.00	86.4
B	40.00	101.6	E	34.00	86.4
C	2.20	5.6	F	3.70	9.4



34 INCHES WIDE

RL-350-6

DUAL-RAMP PORTABLE BARIATRIC WHEELCHAIR SCALE

Rice Lake's RL-350-6 dual-ramp portable bariatric wheelchair scale allows high-capacity, accurate weighing for patients who are unable to be transported to a scale. Featuring a 34-inch (86 centimeters) scale base with dual ramp, wheelchairs can easily be wheeled on and off the scale. Convenient keypad tare reduces errors and increases efficiency. For added safety, this scale features an anti-slip rubber surface and raised edges on the weighing platform.

PG
50

FEATURES

- Large LCD display
- Antimicrobial keypad
- Integrated handles and wheels for easy transport
- Dual ramp
- Large, stable scale base
- Metal, nonslip platform
- Unit of measure toggle or locking
- Motiontrap™ movement compensation technology
- EMR capable
- Serial and USB data communication ports
- Wireless personal area network (WPAN) option available
- Tare function
- Hold function
- Body mass index (BMI) function
- Factory calibrated

SPECIFICATIONS

Capacity:

1,000 × 0.2 lb (450 × 0.1 kg)

Platform Dimensions Without Ramps:

(L × W × H)
34.00 × 34.00 × 2.20 in

Power:

9 VDC, provided by six
AA alkaline batteries (included)
or AC adapter (optional)

Battery Type:

Six AA alkaline (included)

Battery Use:

25 hours of continuous use with batteries
Automatic power-off can be configured

Cable Length:

9 ft (2.7 m) cable between scale base
and indicator

Display:

5-digit LCD display, 0.75 in (1.9 cm)
digit height

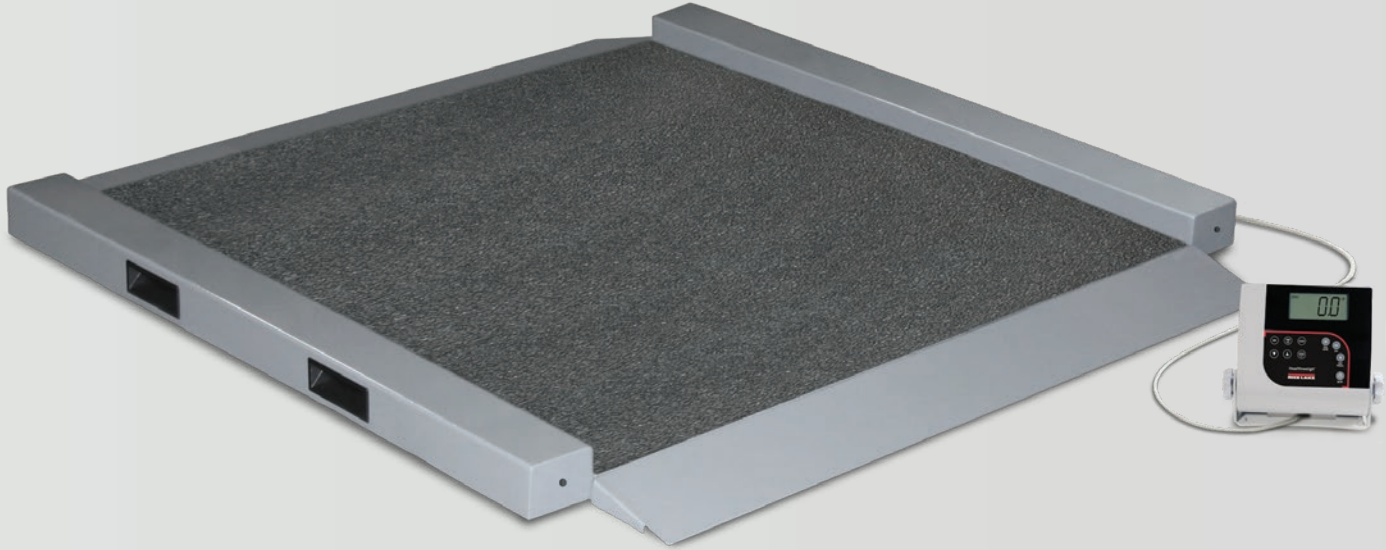
Temperature:

Operating:
50 °F to 104 °F (10 °C to 40 °C)

Warranty:

Two-year limited





WHEELCHAIR SCALE

PG
51

MODEL	CAPACITY	COMMUNICATION	PART #
RL-350-6	1,000 × 0.2lb (450 × 0.1 kg)	USB	150704
RL-350-6BLE	1,000 × 0.2lb (450 × 0.1 kg)	WPAN	205974

OPTIONS

DESCRIPTION	PART #
9VDC adapter, 100-240V, NEMA 1-15 plug, cULus power supply*	133077
9VDC adapter, 100-240V, CEE 7/16 plug, medical grade power supply**	102508

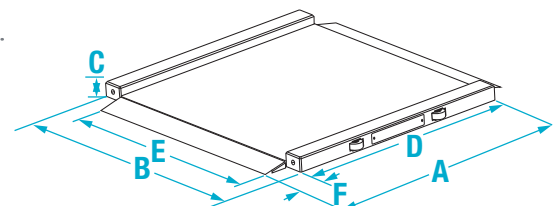
*NEMA 1-15 Plug  **CEE 7/16 Plug 

SHIPPING WEIGHT

MODEL #	PART #	L (IN)	W (IN)	H (IN)	PACKAGE WGT. (LB)	DIM WGT. (LB)	SHIPPING WGT. (LB)
RL-350-6	150704	43	43	11	162	147	162
RL-350-6BLE	205974	43	43	11	162	147	162

DIMENSIONS

	INCHES	CENTIMETERS		INCHES	CENTIMETERS
A	41.00	104.1	D	34.00	86.4
B	40.00	101.6	E	34.00	86.4
C	2.20	5.6	F	3.70	9.4



36 INCHES WIDE

SB-1150

BARIATRIC WHEELCHAIR SCALE

The Summit™ SB-1150 bariatric wheelchair scale provides exceptional performance in environments where typical wheelchair scales are not large enough to meet patient needs. With its large platform and easy-access ramp, the heavy-duty Summit SB-1150 accommodates wheelchairs without sacrificing safety. The scale and ramp are equipped with a nonskid rubber surface and raised guide rails. Convenient keypad tare reduces errors and increases efficiency.

FEATURES

- Large LCD display
- Antimicrobial keypad
- Heavy-duty mild steel construction
- Single ramp
- Metal, nonslip platform
- Motiontrap™ movement compensation technology
- Unit of measure toggle or locking
- EMR capable
- Serial and USB data communication ports
- Wireless personal area network (WPAN) option available
- Tare function
- Hold function
- Body mass index (BMI) function
- Factory calibrated

SPECIFICATIONS

Capacity:

1,000 × 0.2 lb (450 × 0.1 kg)

Platform Dimensions:

(L × W × H)

36.0 × 36.0 × 4.0 in

Ramp Dimensions:

(L × W × H)

36.0 × 28.5 × 4.0 in

Power:

9 VDC, provided by six AA alkaline batteries (included) or AC adapter (optional)

Battery Type:

Six AA alkaline (included)

Battery Use:

25 hours continuous use with batteries
Automatic power-off can be configured

Cable Length:

10 ft (3.1 m) cable between scale base and indicator

Display:

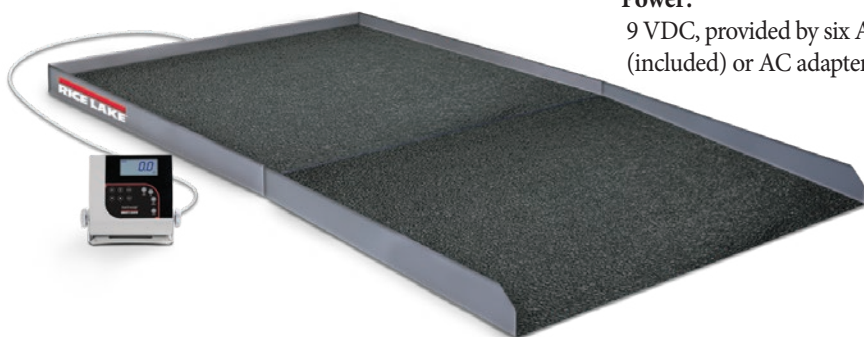
Five-digit LCD display, 0.75 in (1.9 cm) digit height

Temperature:

Operating:
50 °F to 104 °F (10 °C to 40 °C)

Warranty:

Two-year limited





WHEELCHAIR SCALE

MODEL	CAPACITY	COMMUNICATION	PART #
SB-1150	1,000 × 0.2lb (450 × 0.1 kg)	USB	150706
SB-1150BLE	1,000 × 0.2lb (450 × 0.1 kg)	WPAN	205977

OPTIONS

DESCRIPTION	PART #
9VDC adapter, 100-240V, NEMA 1-15 plug, cULus power supply*	133077
9VDC adapter, 100-240V, CEE 7/16 plug, medical grade power supply**	102508

*NEMA 1-15 Plug  **CEE 7/16 Plug 

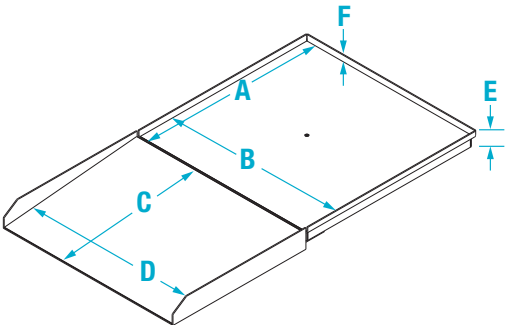
SHIPPING WEIGHT

MODEL #	PART #	L (IN)	W (IN)	H (IN)	PACKAGE WGT. (LB)	DIM WGT. (LB)	SHIPPING WGT. (LB)
SB-1150	150706	49	48	24	363	407	407
SB-1150BLE	205977	49	48	24	363	407	407

*Pallet weight and dimensions are included in shipping weights

DIMENSIONS

	INCHES	CENTIMETERS		INCHES	CENTIMETERS
A	36.00	91.4	D	36.00	91.4
B	36.00	91.4	E	4.00	10.2
C	28.50	72.4	F	1.00	2.5





SD-1150-WP

DIALYSIS WHEELCHAIR SCALE

The Summit™ SD-1150-WP dialysis wheelchair scale is designed to accommodate the unique needs of dialysis patients. It's designed to be pit-mounted, flush with the floor for multipurpose weighing. Its heavy-duty handrail enhances patient safety and convenience and is positioned to remain clear of wheelchairs. Convenient keypad tare reduces errors and increases efficiency.

FEATURES

- Package includes scale, pit frame, handrail and indicator
- Large LCD display
- Antimicrobial keypad
- Heavy-duty mild steel construction
- Live handrail for accuracy and patient safety
- Unit of measure toggle or locking
- Motiontrap™ movement compensation technology
- EMR capable
- Serial and USB data communication ports
- Wireless personal area network (WPAN) option available
- Tare function
- Hold function
- Body mass index (BMI) function
- Factory calibrated

SPECIFICATIONS

Capacity:

1,000 × 0.2 lb (450 × 0.1 kg)

Platform Dimensions:

(L × W × H)

36.00 × 36.00 × 3.00 in

Power:

9 VDC, provided by six AA alkaline batteries (included) or AC adapter (optional)

Battery Type:

Six AA alkaline (included)

Battery Use:

25 hours of continuous use with batteries
Automatic power-off can be configured

Display:

Five-digit LCD display, 0.75 in (1.9 cm) digit height

Cable Length:

10 ft (3.1 m) cable between scale base and indicator

Temperature:

Operating:
50 °F to 104 °F (10 °C to 40 °C)

Warranty:

Two-year limited





WHEELCHAIR SCALE

MODEL	CAPACITY	COMMUNICATION	PART #
SD-1150-WP	1,000 × 0.2 lb (450 × 0.1 kg)	USB	150707
SD-1150-WPBLE	1,000 × 0.2 lb (450 × 0.1 kg)	WPAN	205978

OPTIONS

DESCRIPTION	PART #
9VDC adapter, 100-240V, NEMA 1-15 plug, cULus power supply*	133077
9VDC adapter, 100-240V, CEE 7/16 plug, medical grade power supply**	102508

*NEMA 1-15 Plug



**CEE 7/16 Plug



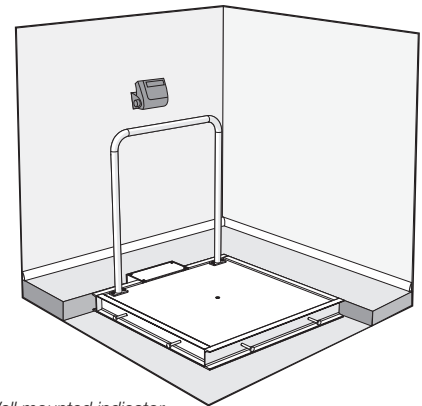
SHIPPING WEIGHT

MODEL #	PART #	L (IN)	W (IN)	H (IN)	PACKAGE WGT. (LB)	DIM WGT. (LB)	SHIPPING WGT. (LB)
SD-1150-WP	150707	40	39	15	246	169	246
SD-1150-WPBLE	205978	40	39	15	246	169	246

*Pallet weight and dimensions are included in shipping weights

DIMENSIONS

	INCHES	CENTIMETERS		INCHES	CENTIMETERS
A	36.00	91.4	E	31.50	80.0
B	36.00	91.4	F	37.00	94.0
C	3.00	7.6	G	35.50	90.2
D	28.50	72.4			



Wall mounted indicator,
cable enclosed in customer
supplied conduit.

