

Bench Scales

TABLE OF CONTENTS

| | | | |
|---|------------|--|------------|
| BenchMark® SL | 158 | Ishida iPC Series | 189 |
| <i>Light-capacity Bench Scale</i> | | <i>Portable Bench Scale</i> | |
| BenchMark® CW-80B | 159 | Versa-portion® | 190 |
| <i>Light-capacity Bench Scale</i> | | <i>Compact Scale</i> | |
| BenchMark® SL/HE | 160 | Ishida IGX Series | 191 |
| <i>Spring Loaded/Hostile Environment Bench Scale</i> | | BenchPro™ BP-P | 192 |
| CW-90B | 161 | <i>Postal Bench Scale</i> | |
| <i>Light-capacity Bench Scale</i> | | BenchPro™ BP-S | 193 |
| CW-90XB | 162 | <i>Shipping Bench Scale</i> | |
| <i>Light-capacity Bench Scale</i> | | BenchPro™ BP-SB | 194 |
| Ready-n-Weigh Bench Scale System | 163 | <i>Shipping Bench Scale with Ball Top Shroud</i> | |
| <i>CW-90B Bench Scale and 380 Indicator Package</i> | | BenchPro™ BP-SR | 195 |
| Ready-n-Weigh Bench Scale System | 164 | <i>Shipping Bench Scale with Roller Conveyor</i> | |
| <i>CW-90B Bench Scale and 480/480 Plus Indicator Package</i> | | BenchMark® MSC-10 | 196 |
| Ready-n-Weigh Bench Scale System | 166 | <i>Mobile Scale Cart</i> | |
| <i>CW-90B Bench Scale and 482/482 Plus Indicator Package</i> | | BenchMark® MSC-20 | 197 |
| Ready-n-Weigh Bench Scale System | 168 | <i>Mobile Scale Cart</i> | |
| <i>CW-90B Bench Scale and 680 Indicator Package</i> | | BenchMark® MSC-30 | 198 |
| Ready-n-Weigh Bench Scale System | 169 | <i>Mobile Scale Cart</i> | |
| <i>CW-90XB Bench Scale and 380 Indicator Package</i> | | BenchMark® MSC-40 | 199 |
| Ready-n-Weigh Bench Scale System | 170 | <i>Mobile Scale Cart</i> | |
| <i>CW-90XB Bench Scale and 480/480 Plus Indicator Package</i> | | Bench Scale Ball Transfer | |
| Ready-n-Weigh Bench Scale System | 172 | and Roller Conveyor | 200 |
| <i>CW-90XB Bench Scale and 482/482 Plus Indicator Package</i> | | Bench Scale Columns | 201 |
| Ready-n-Weigh Bench Scale System | 174 | | |
| <i>CW-90XB Bench Scale and 680 Indicator Package</i> | | | |
| BenchMark® MS | 175 | | |
| <i>Mild Steel Bench Scale</i> | | | |
| BenchMark® SS | 176 | | |
| <i>Stainless Steel Bench Scale</i> | | | |
| BenchMark® HE | 177 | | |
| <i>Hostile Environment Series Bench Scale</i> | | | |
| BenchMark® HE-X | 178 | | |
| <i>Hostile Environment Extreme Bench Scale</i> | | | |
| BenchMark® LP | 180 | | |
| <i>Low-Profile Bench Scale</i> | | | |
| BenchMark® HD | 181 | | |
| <i>Heavy Duty Bench Scale</i> | | | |
| BenchMark® HD-1 Aviation | 182 | | |
| <i>Heavy Duty Bench Scale</i> | | | |
| BenchMark® HD-2 Aviation | 184 | | |
| <i>Heavy Duty Bench Scale</i> | | | |
| BenchMark® HD-3 Aviation | 186 | | |
| <i>Heavy Duty Bench Scale</i> | | | |
| BenchMark® HDP | 188 | | |
| <i>Portable Heavy Duty Bench Scale</i> | | | |

Product names, logos, brands and other trademarks featured or referred to within this publication are the property of their respective trademark holders.

BenchMark® SL

Light-capacity Bench Scale

BENCH SCALES



Approvals



Part Number/Price

| Part # | Platform Capacity | Dimensions (L × W × H) | Est. Weight | Price |
|--------|-------------------|------------------------|-------------|----------|
| 18575* | 2 lb (1 kg) | 10 × 10 × 3.15 in | 13 lb | \$710.00 |
| 18576 | 5 lb (2.5 kg) | 10 × 10 × 3.15 in | 13 lb | \$710.00 |
| 18577 | 10 lb (5 kg) | 10 × 10 × 3.15 in | 13 lb | \$710.00 |
| 18578 | 20 lb (10 kg) | 10 × 10 × 3.15 in | 13 lb | \$710.00 |
| 18579 | 30 lb (15 kg) | 10 × 10 × 3.15 in | 13 lb | \$710.00 |
| 32914 | 30 lb (15 kg) | 12 × 12 × 3.25 in | 14 lb | \$800.00 |
| 32913 | 50 lb (25 kg) | 12 × 12 × 3.25 in | 14 lb | \$800.00 |
| 35198 | 100 lb (50 kg) | 12 × 12 × 3.25 in | 14 lb | \$800.00 |

Options/Accessories

| Part # | Description | Catalog Page # |
|---------|--|--------------------------|
| Consult | Scale columns | See page 201 |
| Consult | Ball transfer and roller conveyor scale tops | See page 200 |
| Consult | Mobile scale carts | See page 196 to page 199 |

*Non-NTEP Certified or Measurement Canada approved

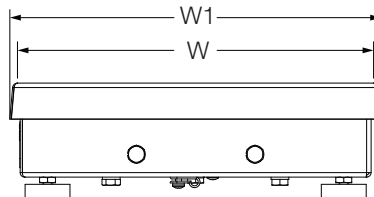
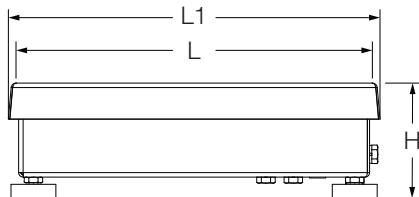
Dimensions

| BenchMark SL | | | |
|--------------|----------|----|----------|
| 10 × 10 in | | | |
| H | 3.15 in | W | 10.00 in |
| L | 10.00 in | W1 | 10.25 in |
| L1 | 10.25 in | | |

Note: 1 in = 25.4 mm

| 12 × 12 in | | | |
|------------|----------|----|----------|
| H | 3.25 in | W | 12.00 in |
| L | 12.00 in | W1 | 12.25 in |
| L1 | 12.25 in | | |

Note: 1 in = 25.4 mm



Standard Features

- NTEP Certified IP66 aluminum load cell
- 304 stainless steel construction
- LifeGuard™ base design isolates load cell from overloads and shock loads for added durability
- Specially designed adjustable support feet provide exceptional traction and won't scratch surfaces

Specifications

Load Cell, NTEP Certified:

IP66 aluminum and environmentally sealed

Output Impedance:

350 ohm

Maximum Overload:

200%

Overload Protection:

Shock-absorbing spider

Scale Frame:

AISI304L, straight line finish, Ra=45 +/- 10

Scale Cover:

AISI304L, straight line finish, Ra=45 +/- 10

Cable Length:

10 ft (3 m)

Compensated Temperature Range:

14 °F to 104 °F (-10 °C to 40 °C)

Warranty:

Two-year limited

Approvals:

NTEP 95-072, Class III 5,000 d
Measurement Canada AM-5082
Load cell is cFMus approved

BenchMark® CW-80B

Light-capacity Bench Scale

BENCH SCALES



Standard Features

- NTEP Certified, IP67 stainless steel load cell
- 304 stainless steel construction
- LifeGuard™ base design isolates load cell from overloads and shock loads for added durability
- Specially designed adjustable support feet provide exceptional traction and won't scratch surfaces

Specifications

Load Cell, NTEP Certified:

IP67 stainless steel and environmentally sealed

Output Impedance:

350 ohm

Maximum Overload:

200%

Overload Protection:

Shock-absorbing spider

Scale Frame:

AISI304L, straight line finish, Ra=45 +/- 10

Scale Cover:

AISI304L, straight line finish, Ra=45 +/- 10

Cable Length:

10 ft (3 m)

Compensated Temperature Range:

14 °F to 104 °F (-10 °C to 40 °C)

Warranty:

Two-year limited

Approvals:

NTEP 96-107, Class III, 3000 d
Measurement Canada AM-5156
Load cell is FM approved

Approvals



Part Number/Price

| Part # | Platform Capacity | Dimensions (L × W × H) | Est. Weight | Price |
|--------|-------------------|------------------------|-------------|----------|
| 35075 | 6 lb (3 kg) | 10 × 10 × 3.15 in | 13 lb | \$865.00 |
| 35076 | 10 lb (5 kg) | 10 × 10 × 3.15 in | 13 lb | \$865.00 |
| 35077 | 15 lb (7 kg) | 10 × 10 × 3.15 in | 13 lb | \$865.00 |
| 35078 | 30 lb (15 kg) | 10 × 10 × 3.15 in | 13 lb | \$865.00 |
| 35079 | 30 lb (15 kg) | 12 × 12 × 3.25 in | 14 lb | \$955.00 |
| 35080 | 60 lb (30 kg) | 12 × 12 × 3.25 in | 14 lb | \$955.00 |

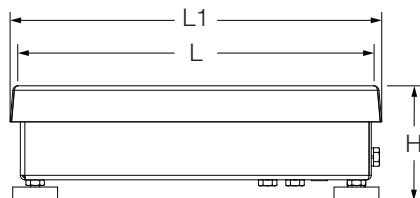
Options/Accessories

| Part # | Description | Catalog Page # |
|---------|--|--------------------------|
| Consult | Scale columns | See page 201 |
| Consult | Ball transfer and roller conveyor scale tops | See page 200 |
| Consult | Mobile scale carts | See page 196 to page 199 |

Dimensions

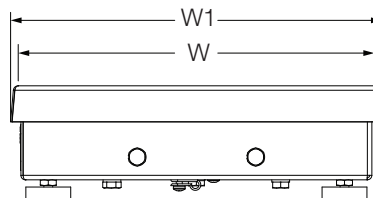
| CW-80B | | | | |
|------------|----------|----|----------|--|
| 10 × 10 in | | | | |
| H | 3.15 in | W | 10.00 in | |
| L | 10.00 in | W1 | 10.25 in | |
| L1 | 10.25 in | | | |

Note: 1 in = 25.4 mm



| 12 × 12 in | | | | |
|------------|----------|----|----------|--|
| H | 3.25 in | W | 12.00 in | |
| L | 12.00 in | W1 | 12.25 in | |
| L1 | 12.25 in | | | |

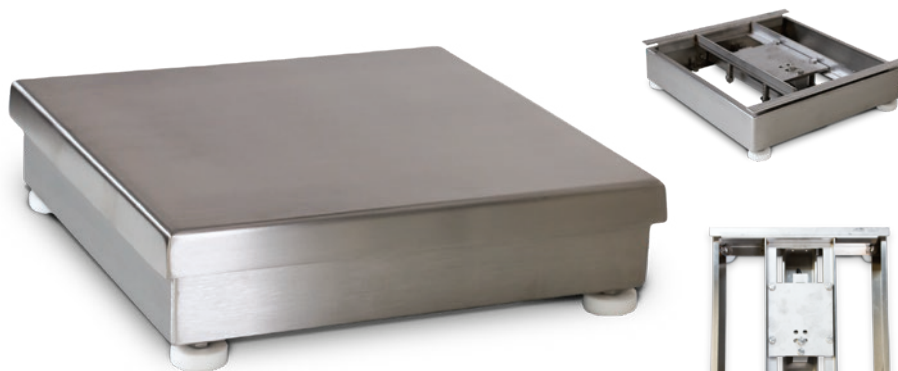
Note: 1 in = 25.4 mm



BenchMark® SL/HE

Spring Loaded/Hostile Environment Bench Scale

BENCH SCALES



Approvals



Part Number/Price

| Part # | Platform Capacity | Dimensions (L x W x H) | Est. Weight | Price |
|--------|-------------------|------------------------|-------------|------------|
| 86942 | 5 lb (2.5 kg) | 10 x 10 x 3.15 in | 13 lb | \$1,288.00 |
| 86943 | 10 lb (5 kg) | 10 x 10 x 3.15 in | 13 lb | \$1,288.00 |
| 86944 | 20 lb (10 kg) | 10 x 10 x 3.15 in | 13 lb | \$1,288.00 |
| 86945 | 30 lb (15 kg) | 10 x 10 x 3.15 in | 13 lb | \$1,288.00 |
| 86946 | 30 lb (15 kg) | 12 x 12 x 3.25 in | 13 lb | \$1,378.00 |
| 86947 | 50 lb (25 kg) | 12 x 12 x 3.25 in | 14 lb | \$1,378.00 |
| 86948 | 100 lb (50 kg) | 12 x 12 x 3.25 in | 14 lb | \$1,378.00 |

Options/Accessories

| Part # | Description | Catalog Page # |
|---------|--|--------------------------|
| Consult | Scale columns | See page 201 |
| Consult | Ball transfer and roller conveyor scale tops | See page 200 |
| Consult | Mobile scale carts | See page 196 to page 199 |

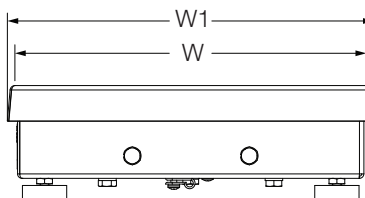
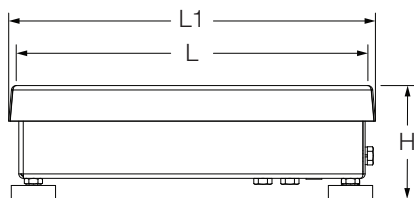
Dimensions

| BenchMark SL/HE | | | |
|-----------------|----------|----|----------|
| 10 x 10 in | | | |
| H | 3.15 in | W | 10.00 in |
| L | 10.00 in | W1 | 10.25 in |
| L1 | 10.25 in | | |

Note: 1 in = 25.4 mm

| 12 x 12 in | | | |
|------------|----------|----|----------|
| H | 3.25 in | W | 12.00 in |
| L | 12.00 in | W1 | 12.25 in |
| L1 | 12.25 in | | |

Note: 1 in = 25.4 mm



Standard Features

- NTEP Certified, IP69K stainless steel, hermetically sealed load cell
- 304 stainless steel construction
- LifeGuard™ base design isolates load cell from overloads and shock loads for added durability
- Specially designed adjustable support feet provide exceptional traction and won't scratch surfaces

Specifications

Load Cell, NTEP Certified:

IP69K stainless steel, hermetically sealed

Output Impedance:

350 ohm

Maximum Overload:

200%, except 150% for 30 lb

Overload Protection:

Shock-absorbing spider

Scale Frame:

AISI304L, straight line finish, Ra=45 +/- 10

Scale Cover:

AISI304L, straight line finish, Ra=45 +/- 10

Cable Length:

10 ft (3 m)

Compensated Temperature Range:

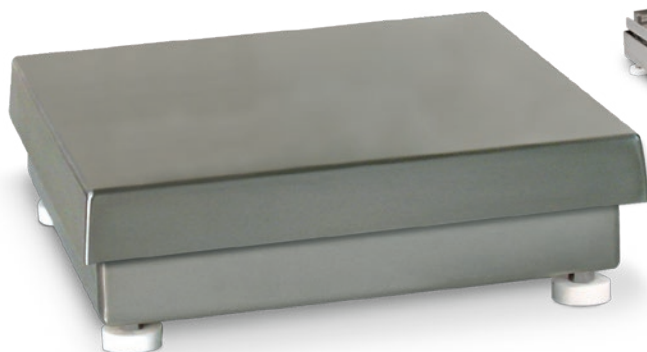
14 °F to 104 °F (-10 °C to 40 °C)

Warranty:

Three-year limited
(includes water ingress)

Approvals:

NTEP 95-072, Class III 5,000 d
Measurement Canada AM-5082
Load cell is FM approved



Standard Features

- IP67 aluminum environmentally sealed load cell
- 304 stainless steel construction
- Meets HACCP requirements
- Five-point overload protection
- Specially designed adjustable support feet provide exceptional traction and will not scratch surfaces

Specifications

Load Cell, NTEP Certified:

IP67 aluminum, environmentally sealed

Output Impedance:

350 ohm

Maximum Overload:

180% to 200% depending on capacity

Overload Protection:

Five-point, independently adjusted

Scale Frame:

AISI304L, straight line finish, Ra=45 +/- 10

Scale Cover:

AISI304L, straight line finish, Ra=45 +/- 10

Cable Length:

34 in or 10 ft

Compensated Temperature Range:

14 °F to 104 °F (-10 °C to 40 °C)

Warranty:

Two-year limited

Approvals:

NTEP 95-072, Class III 5,000 d
Measurement Canada AM-5082
NSF
Load cell is cFmus Approved

Approvals



Part Number/Price

| Part # | | Platform Capacity | Dimensions (L × W × H) | Est. Weight | Price |
|-------------|-------------|-------------------|------------------------|-------------|----------|
| 10 ft cable | 34 in cable | | | | |
| 112599 | 106137 | 5 lb (2.5 kg) | 10 × 10 × 4.25 in | 14 lb | \$660.00 |
| 112601 | 106138 | 10 lb (5 kg) | 10 × 10 × 4.25 in | 14 lb | \$660.00 |
| 112603 | 106139 | 25 lb (10 kg) | 10 × 10 × 4.25 in | 14 lb | \$660.00 |
| 112605 | 106140 | 25 lb (10 kg) | 12 × 12 × 4.25 in | 17 lb | \$750.00 |
| 112607 | 106141 | 50 lb (25 kg) | 12 × 12 × 4.25 in | 17 lb | \$750.00 |
| 112609 | 106142 | 100 lb (50 kg) | 12 × 12 × 4.25 in | 17 lb | \$750.00 |

Options/Accessories

| Part # | Description | Catalog Page # |
|---------|--|--------------------------|
| Consult | Scale columns | See page 201 |
| Consult | Ball transfer and roller conveyor scale tops | See page 200 |
| Consult | Mobile scale carts | See page 196 to page 199 |

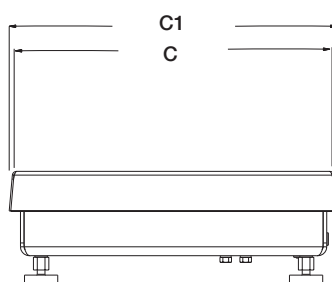
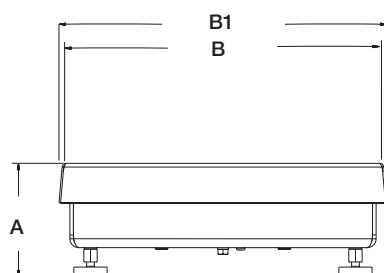
Dimensions

| CW-90B | | | |
|------------|----------|----|----------|
| 10 × 10 in | | | |
| A | 4.25 in | C | 10.00 in |
| B | 10.00 in | C1 | 10.25 in |
| B1 | 10.25 in | | |

Note: 1 in = 25.4 mm

| 12 × 12 in | | | |
|------------|----------|----|----------|
| A | 4.25 in | C | 12.00 in |
| B | 12.00 in | C1 | 12.25 in |
| B1 | 12.25 in | | |

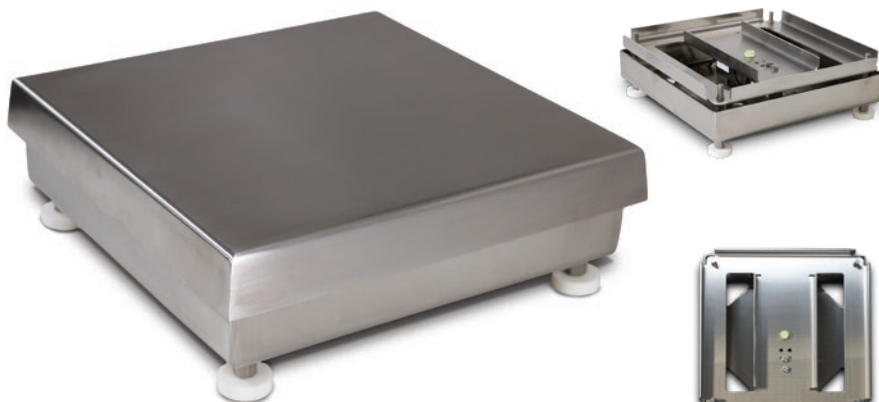
Note: 1 in = 25.4 mm



CW-90XB

Light-capacity Bench Scale

BENCH SCALES



Standard Features

- IP69K, stainless steel hermetically sealed load cell
- 304 stainless steel construction
- Meets HACCP requirements
- Five-point overload protection
- Specially designed adjustable support feet provide exceptional traction and will not scratch surfaces

Specifications

Load Cell, NTEP Certified:

IP69K stainless steel and hermetically sealed

Output Impedance:

350 ohm

Maximum Overload:

180% to 200% depending on capacity

Overload Protection:

Five-point, independently adjusted

Scale Frame:

AISI304L, straight line finish, Ra=45 +/- 10

Scale Cover:

AISI304L, straight line finish, Ra=45 +/- 10

Cable Length:

34 in or 10 ft

Compensated Temperature Range:

14 °F to 104 °F (-10 °C to 40 °C)

Warranty:

Three-year limited
(includes water ingress)

Approvals:

NTEP 95-072, Class III 5,000 d
Measurement Canada AM-5082
NSF
Load cell is cFMus Approved

Approvals



Part Number/Price

| Part # | | Platform Capacity | Dimensions (L × W × H) | Est. Weight | Price |
|-------------|-------------|-------------------|------------------------|-------------|------------|
| 10 ft Cable | 34 in Cable | | | | |
| 112600 | 106143 | 5 lb (2.5 kg) | 10 × 10 × 4.25 in | 14 lb | \$1,222.00 |
| 112602 | 106144 | 10 lb (5 kg) | 10 × 10 × 4.25 in | 14 lb | \$1,222.00 |
| 112604 | 106145 | 25 lb (10 kg) | 10 × 10 × 4.25 in | 14 lb | \$1,222.00 |
| 112606 | 106146 | 25 lb (10 kg) | 12 × 12 × 4.25 in | 17 lb | \$1,312.00 |
| 112608 | 106147 | 50 lb (25 kg) | 12 × 12 × 4.25 in | 17 lb | \$1,312.00 |
| 112610 | 106148 | 100 lb (50 kg) | 12 × 12 × 4.25 in | 17 lb | \$1,312.00 |

Options/Accessories

| Part # | Description | Catalog Page # |
|---------|--|--------------------------|
| Consult | Scale columns | See page 201 |
| Consult | Ball transfer and roller conveyor scale tops | See page 200 |
| Consult | Mobile scale carts | See page 196 to page 199 |

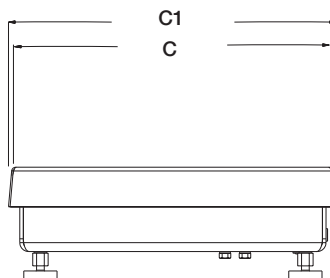
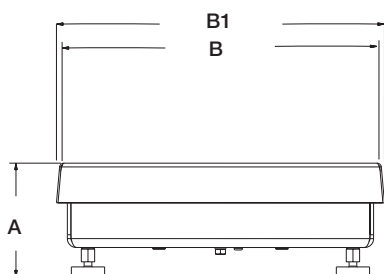
Dimensions

| CW-90XB | | | |
|------------|----------|----|----------|
| 10 x 10 in | | | |
| A | 4.25 in | C | 10.00 in |
| B | 10.00 in | C1 | 10.25 in |
| B1 | 10.25 in | | |

Note: 1 in = 25.4 mm

| 12 x 12 in | | | |
|------------|----------|----|----------|
| A | 4.25 in | C | 12.00 in |
| B | 12.00 in | C1 | 12.25 in |
| B1 | 12.25 in | | |

Note: 1 in = 25.4 mm



Ready-n-Weigh Bench Scale System

CW-90B Bench Scale and 380 Indicator Package

BENCH SCALES



Approvals



CW-90B with 380 Package

| Part # | Capacity | Dimensions (L x W x H) | Est. Weight | Price |
|--------|----------------|------------------------|-------------|------------|
| 208528 | 5 lb (2.5 kg) | 10 x 10 x 4.25 in | 24 lb | \$1,370.00 |
| 208529 | 10 lb (5 kg) | 10 x 10 x 4.25 in | 24 lb | \$1,370.00 |
| 208530 | 25 lb (10 kg) | 10 x 10 x 4.25 in | 24 lb | \$1,370.00 |
| 208531 | 25 lb (10 kg) | 12 x 12 x 4.25 in | 27 lb | \$1,460.00 |
| 208532 | 50 lb (25 kg) | 12 x 12 x 4.25 in | 27 lb | \$1,460.00 |
| 208533 | 100 lb (50 kg) | 12 x 12 x 4.25 in | 27 lb | \$1,460.00 |

Options/Accessories

| Part # | Description | Price |
|---------|------------------------|----------|
| 206433† | External AC adapter | \$52.00 |
| 204258 | Real-time clock module | \$112.00 |

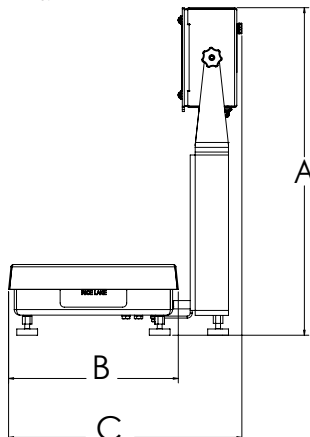


† US plug (NA) - Type A

Dimensions

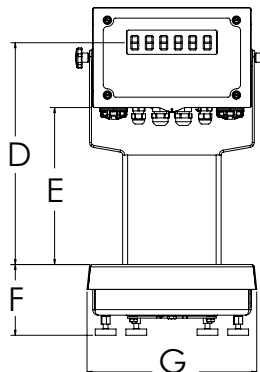
| CW-90B Bench Scale and 380 Indicator | | | |
|--------------------------------------|----------|---|----------|
| 10 x 10 in | | | |
| A | 19.68 in | E | 9.43 in |
| B | 10.20 in | F | 4.25 in |
| C | 14.02 in | G | 10.20 in |
| D | 13.36 in | | |

Note: 1 in = 25.4 mm



| 12 x 12 in | | | |
|------------|----------|---|----------|
| A | 19.56 in | E | 9.30 in |
| B | 12.38 in | F | 4.25 in |
| C | 16.10 in | G | 12.35 in |
| D | 13.23 in | | |

Note: 1 in = 25.4 mm



CW-90B with 380 indicator

Standard Features

- Package includes scale with IP67 aluminum environmentally sealed load cell with an indicator and 12-inch column
- Factory calibrated with indicator setup and configured for 5,000 divisions
- Scale includes rubber feet to provide exceptional traction and avoid scratching surfaces along with removable top cover for ease of cleaning
- Standard RS-232 serial port for connecting to a variety of peripherals
- Powered by four alkaline C-cell batteries (not included) or external AC adapter (not included)

CW-90B Specifications

Load Cell, NTEP Certified:

IP67 aluminum, environmentally sealed

Scale Construction:

304 stainless steel

Maximum Overload:

180% to 200% depending on capacity

Overload Protection:

Five-point, independently adjusted

Scale Frame:

AISI304L, straight line finish, Ra = 45 +/- 10

Scale Cover:

AISI304L, straight line finish, Ra = 45 +/- 10

Cable Length:

34 in

Compensated Temperature Range:

14 °F to 104 °F (-10 °C to 40 °C)

Approvals:

NTEP 21-051, Class III 5,000 d
Measurement Canada AM-6184

CE

cULus

Warranty:

Two-year limited

380 Specifications

Power:

Batteries: 4 alkaline C-cell
Optional: 115/230 VAC to 12 VDC adapter

Battery Life:

45 hours with 4 x 350 ohm load cells, low backlight

Communication Ports:

One RS-232 (three-wire)
One USB 2.0

Display:

Six 1 in (25 mm) tall, LCD digits

Status Annunciators:

g, lb, t, tn, kg, oz, battery level, PT, LT, gross, zero, unstable, net

Keys/Buttons:

5 tactile buttons

Rating/Material:

Enclosure: IP66, 304 Stainless steel

Approvals:

NTEP CC 21-051
Measurement Canada AM-6184

CE Approved

cULus Listed

Warranty:

Two-year limited

Ready-n-Weigh Bench Scale System

CW-90B Bench Scale and 480/480 Plus Indicator Package

BENCH SCALES



Scale and Indicator Package



Approvals



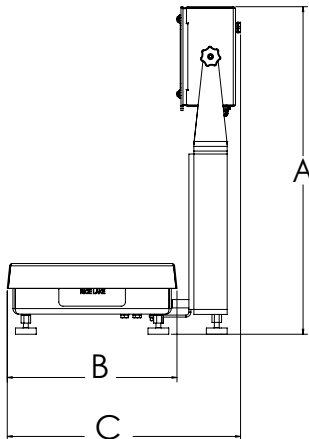
Dimensions

CW-90B Bench Scale and 480/480 Plus Indicator

10 × 10 in

| | | | |
|---|----------|---|----------|
| A | 19.50 in | E | 9.25 in |
| B | 10.25 in | F | 4.25 in |
| C | 14.53 in | G | 10.25 in |
| D | 13.25 in | | |

Note: 1 in = 25.4 mm

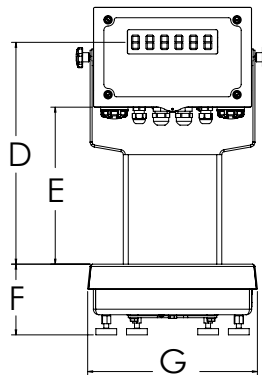


CW-90B with 480 indicator

12 × 12 in

| | | | |
|---|----------|---|----------|
| A | 19.50 in | E | 9.25 in |
| B | 12.25 in | F | 4.25 in |
| C | 16.53 in | G | 12.25 in |
| D | 13.25 in | | |

Note: 1 in = 25.4 mm



Standard Features

- Package includes scale with IP67 aluminum environmentally sealed load cell with an indicator and 12-inch column
- Factory calibrated with indicator setup and configured for 5,000 divisions
- Scale includes rubber feet to provide exceptional traction and avoid scratching surfaces along with removable top cover for ease of cleaning
- AC power 100 to 240 VAC
- Numeric keypad (480 Plus)
- Battery backed time and date
- Standard RS-232 serial ports for connecting to a variety of peripherals

CW-90B Specifications

Load Cell, NTEP Certified:

IP67 aluminum, environmentally sealed

Scale Construction:

304 stainless steel

Maximum Overload:

180% to 200% depending on capacity

Overload Protection:

Five-point, independently adjusted

Scale Frame:

AISI304L, straight line finish, Ra = 45 +/- 10

Scale Cover:

AISI304L, straight line finish, Ra = 45 +/- 10

Cable Length:

34 in

Compensated Temperature Range:

14 °F to 104 °F (-10 °C to 40 °C)

Approvals:

NTEP 12-123, Class III 5,000 d
Measurement Canada AM-5892C
CE
cULus

Warranty:

Two-year limited

480/480 Plus Specifications

Communication Ports:

Com 1: RS-232 full duplex
Com 2: RS-232 full duplex or 20 mA simplex, continuous
Both ports 1200, 2400, 4800, 9600, 19200, 38400 baud seven or eight data bits, even, odd or no parity

Display:

LED display 0.8 in (20 mm), six-digit, seven-segment

Status Annunciators:

Gross, net, center of zero, standstill, lb, kg, tare, preset tare

Keys/Buttons:

Flat membrane panel, embossed keys, tactile feel

Rating/Material:

Enclosure: NEMA Type 4X/IP66, heavy-gauge stainless steel

Approvals:

NTEP CC 12-123
Measurement Canada AM-5892C
CE Marked
UL/cUL Listed

Warranty:

Two-year limited

Ready-n-Weigh Bench Scale System

CW-90B Bench Scale and 480/480 Plus Indicator Package

BENCH SCALES

CW-90B with 480 Package

| Part # | Platform Capacity | Dimensions (L × W × H) | Est. Weight | Price |
|--|-------------------|------------------------|-------------|------------|
| 115 VAC, LED, US Plug-Type B | | | | |
| 201157 | 5 lb (2.5 kg) | 10 × 10 × 4.25 in | 24 lb | \$1,630.00 |
| 201158 | 10 lb (5 kg) | 10 × 10 × 4.25 in | 24 lb | \$1,630.00 |
| 201159 | 25 lb (10 kg) | 10 × 10 × 4.25 in | 24 lb | \$1,630.00 |
| 201160 | 25 lb (10 kg) | 12 × 12 × 4.25 in | 27 lb | \$1,720.00 |
| 201161 | 50 lb (25 kg) | 12 × 12 × 4.25 in | 27 lb | \$1,720.00 |
| 201162 | 100 lb (50 kg) | 12 × 12 × 4.25 in | 27 lb | \$1,720.00 |
| 90-264 VAC, LED, Euro Plug-Type E | | | | |
| 201169 | 5 lb (2.5 kg) | 10 × 10 × 4.25 in | 24 lb | \$1,630.00 |
| 201170 | 10 lb (5 kg) | 10 × 10 × 4.25 in | 24 lb | \$1,630.00 |
| 201171 | 25 lb (10 kg) | 10 × 10 × 4.25 in | 24 lb | \$1,630.00 |
| 201172 | 25 lb (10 kg) | 12 × 12 × 4.25 in | 27 lb | \$1,720.00 |
| 201173 | 50 lb (25 kg) | 12 × 12 × 4.25 in | 27 lb | \$1,720.00 |
| 201174 | 100 lb (50 kg) | 12 × 12 × 4.25 in | 27 lb | \$1,720.00 |

CW-90B with 480 Plus Package

| Part # | Platform Capacity | Dimensions (L × W × H) | Est. Weight | Price |
|--|-------------------|------------------------|-------------|------------|
| 115 VAC, LED, Numeric keypad, US Plug-Type B | | | | |
| 201163 | 5 lb (2.5 kg) | 10 × 10 × 4.25 in | 24 lb | \$1,630.00 |
| 201164 | 10 lb (5 kg) | 10 × 10 × 4.25 in | 24 lb | \$1,630.00 |
| 201165 | 25 lb (10 kg) | 10 × 10 × 4.25 in | 24 lb | \$1,630.00 |
| 201166 | 25 lb (10 kg) | 12 × 12 × 4.25 in | 27 lb | \$1,720.00 |
| 201167 | 50 lb (25 kg) | 12 × 12 × 4.25 in | 27 lb | \$1,720.00 |
| 201168 | 100 lb (50 kg) | 12 × 12 × 4.25 in | 27 lb | \$1,720.00 |
| 90-264 VAC, LED, Numeric keypad, Euro Plug-Type E | | | | |
| 201175 | 5 lb (2.5 kg) | 10 × 10 × 4.25 in | 24 lb | \$1,630.00 |
| 201176 | 10 lb (5 kg) | 10 × 10 × 4.25 in | 24 lb | \$1,630.00 |
| 201177 | 25 lb (10 kg) | 10 × 10 × 4.25 in | 24 lb | \$1,630.00 |
| 201178 | 25 lb (10 kg) | 12 × 12 × 4.25 in | 27 lb | \$1,720.00 |
| 201179 | 50 lb (25 kg) | 12 × 12 × 4.25 in | 27 lb | \$1,720.00 |
| 201180 | 100 lb (50 kg) | 12 × 12 × 4.25 in | 27 lb | \$1,720.00 |



† US plug (NA) - Type B



†† Euro Plug - Type E

Ready-n-Weigh Bench Scale System

CW-90B Bench Scale and 482/482 Plus Indicator Package

BENCH SCALES



Scale
and
Indicator
Package

Approvals



Dimensions

CW-90B Bench Scale and 482/482 Plus Indicator

10 × 10 in

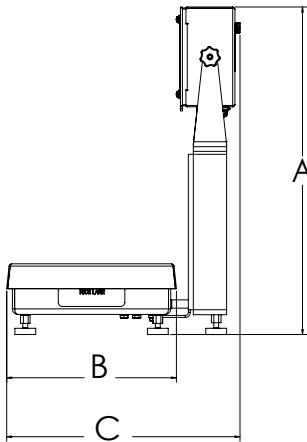
| | | | |
|---|----------|---|----------|
| A | 19.50 in | E | 9.25 in |
| B | 10.25 in | F | 4.25 in |
| C | 14.53 in | G | 10.25 in |
| D | 13.25 in | | |

Note: 1 in = 25.4 mm

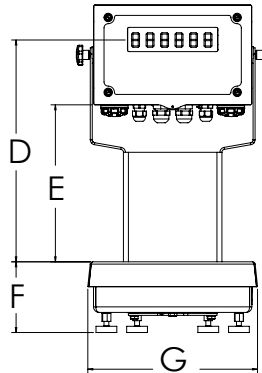
12 × 12 in

| | | | |
|---|----------|---|----------|
| A | 19.50 in | E | 9.25 in |
| B | 12.25 in | F | 4.25 in |
| C | 16.53 in | G | 12.25 in |
| D | 13.25 in | | |

Note: 1 in = 25.4 mm



CW-90B with 482 indicator



Standard Features

- Package includes scale with IP67 aluminum environmentally sealed load cell with an indicator and 12-inch column
- Factory calibrated with indicator setup and configured for 5,000 divisions
- Scale includes rubber feet to provide exceptional traction and avoid scratching surfaces along with removable top cover for ease of cleaning
- AC power 100 to 240 VAC
- LCD backlit indicator display for a variety of environments
- Battery backed time and date
- Standard RS-232 serial ports for connecting to a variety of peripherals

CW-90B Specifications

Load Cell, NTEP Certified:

IP67 aluminum, environmentally sealed

Scale Construction:

304 stainless steel

Maximum Overload:

180% to 200% depending on capacity

Overload Protection:

Five-point, independently adjusted

Scale Frame:

AISI304L, straight line finish, Ra = 45 +/- 10

Scale Cover:

AISI304L, straight line finish, Ra = 45 +/- 10

Cable Length:

34 in

Compensated Temperature Range:

14 °F to 104 °F (-10 °C to 40 °C)

Approvals:

NTEP 12-123, Class III 5,000 d

Measurement Canada AM-5892C

CE

cULus

Warranty:

Two-year limited

482/482 Plus Specifications

Communication Ports:

Com 1: RS-232 full duplex

Com 2: RS-232 full duplex or 20 mA simplex, continuous

Both ports 1200, 2400, 4800, 9600, 19200, 38400 baud seven or eight data bits, even, odd or no parity

Display:

LCD backlit display, transmissive/transflective 0.8 in (20 mm), six-digit, seven-segment

Status Annunciators:

Gross, net, center of zero, standstill, lb, kg, tare, preset tare

Keys/Buttons:

Flat membrane panel, embossed keys, tactile feel

Rating/Material:

Enclosure: NEMA Type 4X/IP66, heavy-gauge stainless steel

Approvals:

NTEP CC 12-123

Measurement Canada AM-5892C

CE Marked

cULus Listed

Warranty:

Two-year limited

Ready-n-Weigh Bench Scale System

CW-90B Bench Scale and 482/482 Plus Indicator Package

BENCH SCALES

CW-90B with 482 Package

| Part # | Platform Capacity | Dimensions (L × W × H) | Est. Weight | Price |
|--|-------------------|------------------------|-------------|------------|
| 115 VAC, LCD, US Plug-Type B | | | | |
| 201463 | 5 lb (2.5 kg) | 10 × 10 × 4.25 in | 24 lb | \$1,750.00 |
| 201464 | 10 lb (5 kg) | 10 × 10 × 4.25 in | 24 lb | \$1,750.00 |
| 201465 | 25 lb (10 kg) | 10 × 10 × 4.25 in | 24 lb | \$1,750.00 |
| 201466 | 25 lb (10 kg) | 12 × 12 × 4.25 in | 27 lb | \$1,840.00 |
| 201467 | 50 lb (25 kg) | 12 × 12 × 4.25 in | 27 lb | \$1,840.00 |
| 201468 | 100 lb (50 kg) | 12 × 12 × 4.25 in | 27 lb | \$1,840.00 |
| 90-264 VAC, LCD, Euro Plug-Type E | | | | |
| 201480 | 5 lb (2.5 kg) | 10 × 10 × 4.25 in | 24 lb | \$1,750.00 |
| 201485 | 10 lb (5 kg) | 10 × 10 × 4.25 in | 24 lb | \$1,750.00 |
| 201486 | 25 lb (10 kg) | 10 × 10 × 4.25 in | 24 lb | \$1,750.00 |
| 201487 | 25 lb (10 kg) | 12 × 12 × 4.25 in | 27 lb | \$1,840.00 |
| 201488 | 50 lb (25 kg) | 12 × 12 × 4.25 in | 27 lb | \$1,840.00 |
| 201489 | 100 lb (50 kg) | 12 × 12 × 4.25 in | 27 lb | \$1,840.00 |

CW-90B with 482 Package

| Part # | Platform Capacity | Dimensions (L × W × H) | Est. Weight | Price |
|--|-------------------|------------------------|-------------|------------|
| 115 VAC, LCD, Numeric keypad, US Plug-Type B | | | | |
| 201469 | 5 lb (2.5 kg) | 10 × 10 × 4.25 in | 24 lb | \$1,750.00 |
| 201475 | 10 lb (5 kg) | 10 × 10 × 4.25 in | 24 lb | \$1,750.00 |
| 201476 | 25 lb (10 kg) | 10 × 10 × 4.25 in | 24 lb | \$1,750.00 |
| 201477 | 25 lb (10 kg) | 12 × 12 × 4.25 in | 27 lb | \$1,840.00 |
| 201478 | 50 lb (25 kg) | 12 × 12 × 4.25 in | 27 lb | \$1,840.00 |
| 201479 | 100 lb (50 kg) | 12 × 12 × 4.25 in | 27 lb | \$1,840.00 |
| 90-264 VAC, LCD, Numeric keypad, Euro Plug-Type E | | | | |
| 201490 | 5 lb (2.5 kg) | 10 × 10 × 4.25 in | 24 lb | \$1,750.00 |
| 201491 | 10 lb (5 kg) | 10 × 10 × 4.25 in | 24 lb | \$1,750.00 |
| 201492 | 25 lb (10 kg) | 10 × 10 × 4.25 in | 24 lb | \$1,750.00 |
| 201493 | 25 lb (10 kg) | 12 × 12 × 4.25 in | 27 lb | \$1,840.00 |
| 201494 | 50 lb (25 kg) | 12 × 12 × 4.25 in | 27 lb | \$1,840.00 |
| 201495 | 100 lb (50 kg) | 12 × 12 × 4.25 in | 27 lb | \$1,840.00 |



[†] US plug (NA) - Type B



^{**} Euro Plug - Type E

Ready-n-Weigh Bench Scale System

CW-90B Bench Scale and 680 Indicator Package

BENCH SCALES



Approvals



CW-90B with 680 Package

| Part # | Platform Capacity | Dimensions (L x W x H) | Est. Weight | Price |
|--|-------------------|------------------------|-------------|------------|
| 115-230 VAC, LED, Numeric, US Plug-Type B | | | | |
| 201308 | 5 lb (2.5 kg) | 10 x 10 x 4.25 in | 24 lb | \$1,680.00 |
| 201309 | 10 lb (5 kg) | 10 x 10 x 4.25 in | 24 lb | \$1,680.00 |
| 201310 | 25 lb (10 kg) | 10 x 10 x 4.25 in | 24 lb | \$1,680.00 |
| 201311 | 25 lb (10 kg) | 12 x 12 x 4.25 in | 27 lb | \$1,770.00 |
| 201312 | 50 lb (25 kg) | 12 x 12 x 4.25 in | 27 lb | \$1,770.00 |
| 201313 | 100 lb (50 kg) | 12 x 12 x 4.25 in | 27 lb | \$1,770.00 |
| 115-230 VAC, LED, Numeric, Euro Plug-Type E | | | | |
| 201314 | 5 lb (2.5 kg) | 10 x 10 x 4.25 in | 24 lb | \$1,680.00 |
| 201315 | 10 lb (5 kg) | 10 x 10 x 4.25 in | 24 lb | \$1,680.00 |
| 201319 | 25 lb (10 kg) | 10 x 10 x 4.25 in | 24 lb | \$1,680.00 |
| 201320 | 25 lb (10 kg) | 12 x 12 x 4.25 in | 27 lb | \$1,770.00 |
| 201321 | 50 lb (25 kg) | 12 x 12 x 4.25 in | 27 lb | \$1,770.00 |
| 201322 | 100 lb (50 kg) | 12 x 12 x 4.25 in | 27 lb | \$1,770.00 |



* US plug (NA) - Type B

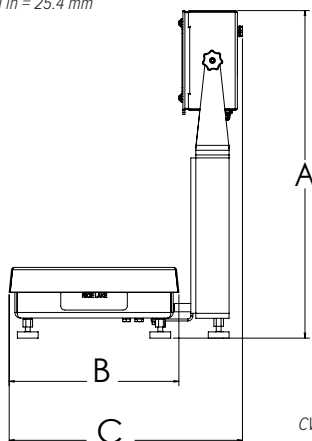


** Euro Plug - Type E

Dimensions

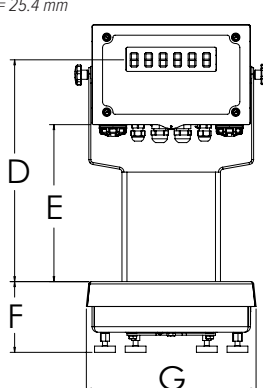
| CW-90B Bench Scale and 680 Indicator | | | |
|---|----------|---|----------|
| 10 x 10 in | | | |
| A | 19.56 in | E | 9.31 in |
| B | 10.25 in | F | 4.25 in |
| C | 15.83 in | G | 10.25 in |
| D | 13.31 in | | |

Note: 1 in = 25.4 mm



| 12 x 12 in | | | |
|-------------------|----------|---|----------|
| A | 19.56 in | E | 9.31 in |
| B | 12.25 in | F | 4.25 in |
| C | 16.83 in | G | 12.25 in |
| D | 13.31 in | | |

Note: 1 in = 25.4 mm



CW-90B with 680 indicator

Standard Features

- Package includes scale with IP67 aluminum environmentally sealed load cell with an indicator and 12-inch column
- Factory calibrated with indicator setup and configured for 5,000 divisions
- Scale includes rubber feet to provide exceptional traction and avoid scratching surfaces along with removable top cover for ease of cleaning
- AC power 100 to 240 VAC
- LCD backlit indicator display for a variety of environments
- Battery backed time and date
- Standard RS-232 serial ports for connecting to a variety of peripherals
- Ethernet TCP/IP comes standard

CW-90B Specifications

Load Cell, NTEP Certified:

IP67 aluminum and environmentally sealed

Scale Construction:

304 stainless steel

Maximum Overload:

180% to 200% depending on capacity

Overload Protection:

Five-point, independently adjusted

Scale Frame:

AISI304L, straight line finish, Ra = 45 +/- 10

Scale Cover:

AISI304L, straight line finish, Ra = 45 +/- 10

Cable Length:

34 in

Compensated Temperature Range:

14 °F to 104 °F (-10 °C to 40 °C)

Approvals:

NTEP 95-072, Class III 5,000 d

Measurement Canada AM-5082

CE

cULus

Warranty:

Two-year limited

680 Specifications

Communication Ports:

Two RS-232 (three-wire)

RS-485/422 (two-wire or four-wire)

Micro USB (device)

Ethernet TCP/IP (10/100)

Display:

Seven 0.8-inch tall, seven-segment digits

Status Annunciators:

Eight LED annunciators

Keys/Buttons:

Flat membrane panel, tactile feel

(18 buttons plus ON/OFF)

Rating/Material:

Rating: IP69K (IP66 with RJ45)

Material: AISI 304 Stainless Steel

Approvals:

NTEP CC 19-021

Measurement Canada AM-6121C

cULus Listed

CE Marked

Warranty:

Two-year limited

Ready-n-Weigh Bench Scale System

CW-90XB Bench Scale and 380 Indicator Package

BENCH SCALES



Approvals



CW-90XB with 380 Package

| Part # | Capacity | Dimensions (L x W x H) | Est. Weight | Price |
|--------|----------------|------------------------|-------------|------------|
| 208543 | 5 lb (2.5 kg) | 10 x 10 x 4.25 in | 24 lb | \$1,932.00 |
| 208544 | 10 lb (5 kg) | 10 x 10 x 4.25 in | 24 lb | \$1,932.00 |
| 208545 | 25 lb (10 kg) | 10 x 10 x 4.25 in | 24 lb | \$1,932.00 |
| 208546 | 25 lb (10 kg) | 12 x 12 x 4.25 in | 27 lb | \$2,022.00 |
| 208547 | 50 lb (25 kg) | 12 x 12 x 4.25 in | 27 lb | \$2,022.00 |
| 208548 | 100 lb (50 kg) | 12 x 12 x 4.25 in | 27 lb | \$2,022.00 |

Options/Accessories

| Part # | Description | Price |
|---------|------------------------|----------|
| 206433† | External AC adapter | \$52.00 |
| 204258 | Real-time clock module | \$112.00 |



† US plug (NA) - Type A

Dimensions

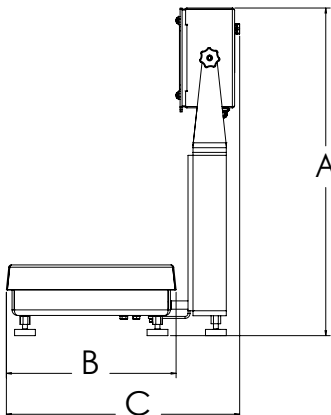
CW-90XB Bench Scale and 380 Indicator

| 10 x 10 in | | | |
|------------|----------|---|----------|
| A | 19.69 in | E | 9.44 in |
| B | 10.20 in | F | 4.25 in |
| C | 14.02 in | G | 10.20 in |
| D | 13.36 in | | |

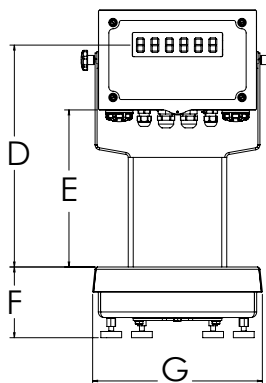
Note: 1 in = 25.4 mm

| 12 x 12 in | | | |
|------------|----------|---|----------|
| A | 19.56 in | E | 9.31 in |
| B | 12.29 in | F | 4.25 in |
| C | 16.07 in | G | 12.29 in |
| D | 13.23 in | | |

Note: 1 in = 25.4 mm



CW-90XB with 380 indicator



Standard Features

- Package includes scale with IP69K stainless steel hermetically sealed load cell with an indicator and 12-inch column
- Factory calibrated with indicator setup and configured for 5,000 divisions
- Scale includes rubber feet to provide exceptional traction and avoid scratching surfaces along with a removable top cover for ease of cleaning
- Powered by four alkaline C-cell batteries (not included) or external AC adapter (not included)
- Standard RS-232 serial port for connecting to a variety of peripherals

CW-90XB Specifications

Load Cell, NTEP Certified:

IP69K stainless steel and hermetically sealed

Scale Construction:

304 stainless steel

Maximum Overload:

180% to 200% depending on capacity

Overload Protection:

Five-point, independently adjusted

Scale Frame:

AISI304L, straight line finish, Ra = 45 +/- 10

Scale Cover:

AISI304L, straight line finish, Ra = 45 +/- 10

Cable Length:

34 in

Compensated Temperature Range:

14 °F to 104 °F (-10 °C to 40 °C)

Approvals:

NTEP CC 95-072, Class III 5,000 d

Measurement Canada AM-5082

Load cell is FM approved

Warranty:

Three-year limited (includes water ingress)

380 Specifications

Power:

Batteries: Four alkaline C-cell

Optional: 115/230 VAC to 12 VDC adapter

Battery Life:

100 hours on alkaline batteries with one 350 ohm load cell, no backlight

Communication Ports:

One RS-232 (three-wire)

One USB 2.0

Display:

Six 1-inch (25 mm) tall, LCD digits

Status Annunciators:

g, lb, t, tn, kg, oz, battery level, PT, LT, gross, zero, unstable, net

Keys/Buttons:

5 tactile buttons

Rating/Material:

Enclosure: IP66, 304 Stainless steel

Approvals:

NTEP CC 21-051

Measurement Canada AM-6184

CE Marked

cULus Listed

Warranty:

Two-year limited

Ready-n-Weigh Bench Scale System

CW-90XB Bench Scale and 480/480 Plus Indicator Package

BENCH SCALES



Scale
and
Indicator
Package

Standard Features

- Package includes scale with IP69K stainless steel hermetically sealed load cell with an indicator and 12-inch column
- Factory calibrated with indicator setup and configured for 5,000 divisions
- Scale includes rubber feet to provide exceptional traction and avoid scratching surfaces along with removable top cover for ease of cleaning
- AC power 100 to 240 VAC
- Numeric keypad (480 plus)
- Battery backed time and date
- Standard RS-232 serial ports for connecting to peripherals

CW-90XB Specifications

Load Cell, NTEP Certified:

IP69K stainless steel and hermetically sealed

Scale Construction:

304 stainless steel

Maximum Overload:

180% to 200% depending on capacity

Overload Protection:

Five-point, independently adjusted

Scale Frame:

AISI304L, straight line finish, Ra = 45 +/- 10

Scale Cover:

AISI304L, straight line finish, Ra = 45 +/- 10

Cable Length:

34 in

Compensated Temperature Range:

14 °F to 104 °F (-10 °C to 40 °C)

CW-90XB Approvals:

NTEP CC 95-072, Class III 5,000 d

Measurement Canada AM-5082

Load cell is FM approved

Warranty:

Three-year limited (includes water ingress)

480/480 Plus Specifications

Communication Ports:

Com 1: RS-232 full duplex

Com 2: RS-232 full duplex or 20 mA simplex, continuous

Both ports 1200, 2400, 4800, 9600, 19200, 38400 baud seven or eight data bits, even, odd or no parity

Display:

LED display 0.8 in (20 mm), six-digit, seven-segment

Status Annunciators:

Gross, net, center of zero, standstill, lb, kg, tare, preset tare

Keys/Buttons:

Flat membrane panel, embossed keys, tactile feel

Rating/Material:

Enclosure: NEMA Type 4X/IP66, heavy-gauge stainless steel

Approvals:

NTEP CC 12-123

Measurement Canada AM-5892C

CE Marked

cULus Listed

Warranty:

Two-year limited

Approvals



Dimensions

CW-90XB Bench Scale and 480/480 Plus Indicator

10 x 10 in

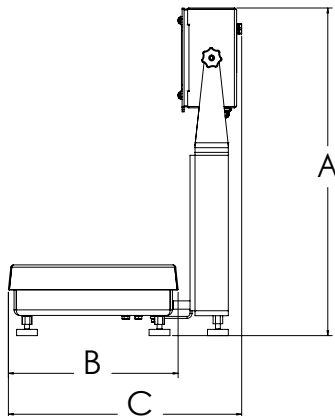
| | | | |
|---|----------|---|----------|
| A | 19.50 in | E | 9.25 in |
| B | 10.25 in | F | 4.25 in |
| C | 14.53 in | G | 10.25 in |
| D | 13.25 in | | |

Note: 1 in = 25.4 mm

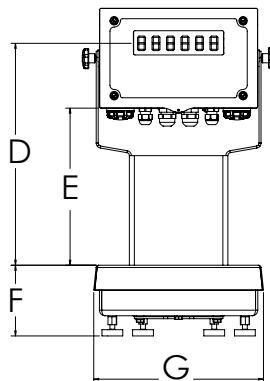
12 x 12 in

| | | | |
|---|----------|---|----------|
| A | 19.50 in | E | 9.25 in |
| B | 12.25 in | F | 4.25 in |
| C | 16.53 in | G | 12.25 in |
| D | 13.25 in | | |

Note: 1 in = 25.4 mm



CW-90XB with 480 indicator



Ready-n-Weigh Bench Scale System

CW-90XB Bench Scale and 480/480 Plus Indicator Package

BENCH SCALES

CW-90XB with 480 Package

| Part # | Platform Capacity | Dimensions (L × W × H) | Est. Weight | Price |
|--|-------------------|------------------------|-------------|------------|
| 115 VAC, LED, US Plug-Type B | | | | |
| 201241 | 5 lb (2.5 kg) | 10 × 10 × 4.25 in | 24 lb | \$2,192.00 |
| 201242 | 10 lb (5 kg) | 10 × 10 × 4.25 in | 24 lb | \$2,192.00 |
| 201243 | 25 lb (10 kg) | 10 × 10 × 4.25 in | 24 lb | \$2,192.00 |
| 201244 | 25 lb (10 kg) | 12 × 12 × 4.25 in | 27 lb | \$2,282.00 |
| 201245 | 50 lb (25 kg) | 12 × 12 × 4.25 in | 27 lb | \$2,282.00 |
| 201246 | 100 lb (50 kg) | 12 × 12 × 4.25 in | 27 lb | \$2,282.00 |
| 90-264 VAC, LED, Euro Plug-Type E | | | | |
| 201254 | 5 lb (2.5 kg) | 10 × 10 × 4.25 in | 24 lb | \$2,192.00 |
| 201255 | 10 lb (5 kg) | 10 × 10 × 4.25 in | 24 lb | \$2,192.00 |
| 201257 | 25 lb (10 kg) | 10 × 10 × 4.25 in | 24 lb | \$2,192.00 |
| 201258 | 25 lb (10 kg) | 12 × 12 × 4.25 in | 27 lb | \$2,282.00 |
| 201259 | 50 lb (25 kg) | 12 × 12 × 4.25 in | 27 lb | \$2,282.00 |
| 201260 | 100 lb (50 kg) | 12 × 12 × 4.25 in | 27 lb | \$2,282.00 |

CW-90XB with 480 Plus Package

| Part # | Platform Capacity | Dimensions (L × W × H) | Est. Weight | Price |
|---|-------------------|------------------------|-------------|------------|
| 115 VAC, LED, Numeric, US Plug-Type B | | | | |
| 201247 | 5 lb (2.5 kg) | 10 × 10 × 4.25 in | 24 lb | \$2,192.00 |
| 201248 | 10 lb (5 kg) | 10 × 10 × 4.25 in | 24 lb | \$2,192.00 |
| 201249 | 25 lb (10 kg) | 10 × 10 × 4.25 in | 24 lb | \$2,192.00 |
| 201250 | 25 lb (10 kg) | 12 × 12 × 4.25 in | 27 lb | \$2,282.00 |
| 201251 | 50 lb (25 kg) | 12 × 12 × 4.25 in | 27 lb | \$2,282.00 |
| 201253 | 100 lb (50 kg) | 12 × 12 × 4.25 in | 27 lb | \$2,282.00 |
| 90-264 VAC, LED, Numeric, Euro Plug-Type E | | | | |
| 201261 | 5 lb (2.5 kg) | 10 × 10 × 4.25 in | 24 lb | \$2,192.00 |
| 201262 | 10 lb (5 kg) | 10 × 10 × 4.25 in | 24 lb | \$2,192.00 |
| 201263 | 25 lb (10 kg) | 10 × 10 × 4.25 in | 24 lb | \$2,192.00 |
| 201264 | 25 lb (10 kg) | 12 × 12 × 4.25 in | 27 lb | \$2,282.00 |
| 201265 | 50 lb (25 kg) | 12 × 12 × 4.25 in | 27 lb | \$2,282.00 |
| 201266 | 100 lb (50 kg) | 12 × 12 × 4.25 in | 27 lb | \$2,282.00 |



* US plug (NA) - Type B



** Euro Plug - Type E

Ready-n-Weigh Bench Scale System

CW-90XB Bench Scale and 482/482 Plus Indicator Package

BENCH SCALES



Scale
and
Indicator
Package

Approvals



Standard Features

- Package includes scale with IP69K stainless steel hermetically sealed load cell with an indicator and 12-inch
- Factory calibrated with indicator setup and configured for 5,000 divisions
- Scale includes rubber feet to provide exceptional traction and avoid scratching surfaces along with removable top cover for ease of cleaning
- AC power 100 to 240 VAC
- LCD backlit display suitable for a variety of environments
- Battery backed time and date
- Standard RS-232 serial ports for connecting to a variety of peripherals

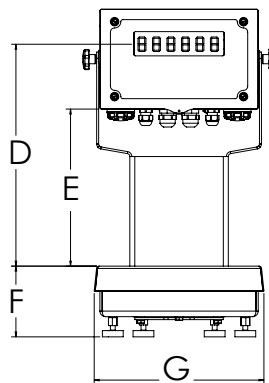
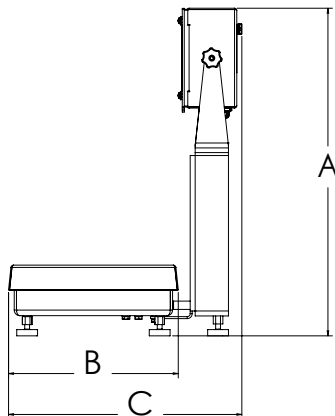
Dimensions

| CW-90XB Bench Scale and 482/482 Plus Indicator | | | |
|--|----------|---|----------|
| 10 × 10 in | | | |
| A | 19.50 in | E | 9.25 in |
| B | 10.25 in | F | 4.25 in |
| C | 14.53 in | G | 10.25 in |
| D | 13.25 in | | |

Note: 1 in = 25.4 mm

| 12 × 12 in | | | |
|------------|----------|---|----------|
| A | 19.50 in | E | 9.25 in |
| B | 12.25 in | F | 4.25 in |
| C | 16.53 in | G | 12.25 in |
| D | 13.25 in | | |

Note: 1 in = 25.4 mm



CW-90XB with 482 indicator

Specifications

Load Cell, NTEP Certified:

IP69K stainless steel and hermetically sealed

Scale Construction:

304 stainless steel

Maximum Overload:

180% to 200% depending on capacity

Overload Protection:

Five-point, independently adjusted

Scale Frame:

AISI304L, straight line finish, Ra = 45 +/- 10

Scale Cover:

AISI304L, straight line finish, Ra = 45 +/- 10

Cable Length:

34 in

Compensated Temperature Range:

14 °F to 104 °F (-10 °C to 40 °C)

Approvals:

NTEP CC 95-072, Class III 5,000 d

Measurement Canada AM-5082

Load cell is FM approved

Warranty:

Three-year limited (includes water ingress)

482/482 Plus Specifications

Communication Ports:

Com 1: RS-232 full duplex

Com 2: RS-232 full duplex or 20 mA simplex, continuous

Both ports 1200, 2400, 4800, 9600, 19200, 38400 baud seven or eight data bits, even, odd or no parity

Display:

LCD backlit display, transmissive/transflective 0.8 in (20 mm), six-digit, seven-segment

Status Annunciators:

Gross, net, center of zero, standstill, lb, kg, tare, preset tare

Keys/Buttons:

Flat membrane panel, embossed keys, tactile feel

Rating/Material:

Enclosure: NEMA Type 4X/IP66, heavy-gauge stainless steel

Approvals:

NTEP CC 12-123

Measurement Canada AM-5892C

CE Marked

cULus Listed

Warranty:

Two-year limited

Ready-n-Weigh Bench Scale System

CW-90XB Bench Scale and 482/482 Plus Indicator Package

BENCH SCALES

CW-90XB with 482 Package

| Part # | Platform Capacity | Dimensions (L × W × H) | Est. Weight | Price |
|--|-------------------|------------------------|-------------|------------|
| 115 VAC, LCD, US Plug-Type B | | | | |
| 201533 | 5 lb (2.5 kg) | 10 × 10 × 4.25 in | 24 lb | \$2,312.00 |
| 201534 | 10 lb (5 kg) | 10 × 10 × 4.25 in | 24 lb | \$2,312.00 |
| 201535 | 25 lb (10 kg) | 10 × 10 × 4.25 in | 24 lb | \$2,312.00 |
| 201536 | 25 lb (10 kg) | 12 × 12 × 4.25 in | 27 lb | \$2,402.00 |
| 201537 | 50 lb (25 kg) | 12 × 12 × 4.25 in | 27 lb | \$2,402.00 |
| 201538 | 100 lb (50 kg) | 12 × 12 × 4.25 in | 27 lb | \$2,402.00 |
| 90-264 VAC, LCD, Euro Plug-Type E | | | | |
| 201546 | 5 lb (2.5 kg) | 10 × 10 × 4.25 in | 24 lb | \$2,312.00 |
| 201547 | 10 lb (5 kg) | 10 × 10 × 4.25 in | 24 lb | \$2,312.00 |
| 201548 | 25 lb (10 kg) | 10 × 10 × 4.25 in | 24 lb | \$2,312.00 |
| 201549 | 25 lb (10 kg) | 12 × 12 × 4.25 in | 27 lb | \$2,402.00 |
| 201550 | 50 lb (25 kg) | 12 × 12 × 4.25 in | 27 lb | \$2,402.00 |
| 201551 | 100 lb (50 kg) | 12 × 12 × 4.25 in | 27 lb | \$2,402.00 |

CW-90XB with 482 Plus Package

| Part # | Platform Capacity | Dimensions (L × W × H) | Est. Weight | Price |
|---|-------------------|------------------------|-------------|------------|
| 115 VAC, LCD, Numeric, US Plug-Type B | | | | |
| 201539 | 5 lb (2.5 kg) | 10 × 10 × 4.25 in | 24 lb | \$2,312.00 |
| 201541 | 10 lb (5 kg) | 10 × 10 × 4.25 in | 24 lb | \$2,312.00 |
| 201542 | 25 lb (10 kg) | 10 × 10 × 4.25 in | 24 lb | \$2,312.00 |
| 201543 | 25 lb (10 kg) | 12 × 12 × 4.25 in | 27 lb | \$2,402.00 |
| 201544 | 50 lb (25 kg) | 12 × 12 × 4.25 in | 27 lb | \$2,402.00 |
| 201545 | 100 lb (50 kg) | 12 × 12 × 4.25 in | 27 lb | \$2,402.00 |
| 90-264 VAC, LCD, Numeric, Euro Plug-Type E | | | | |
| 201552 | 5 lb (2.5 kg) | 10 × 10 × 4.25 in | 24 lb | \$2,312.00 |
| 201553 | 10 lb (5 kg) | 10 × 10 × 4.25 in | 24 lb | \$2,312.00 |
| 201554 | 25 lb (10 kg) | 10 × 10 × 4.25 in | 24 lb | \$2,312.00 |
| 201555 | 25 lb (10 kg) | 12 × 12 × 4.25 in | 27 lb | \$2,402.00 |
| 201556 | 50 lb (25 kg) | 12 × 12 × 4.25 in | 27 lb | \$2,402.00 |
| 201557 | 100 lb (50 kg) | 12 × 12 × 4.25 in | 27 lb | \$2,402.00 |



* US plug (NA) - Type B



** Euro Plug - Type E

Ready-n-Weigh Bench Scale System

CW-90XB Bench Scale and 680 Indicator Package

BENCH SCALES



Approvals



CW-90XB with 680 Package

| Part # | Platform Capacity | Dimensions (L x W x H) | Est. Weight | Price |
|--|-------------------|------------------------|-------------|------------|
| 115-230 VAC, LED, Numeric, US Plug-Type B | | | | |
| 201409 | 5 lb (2.5 kg) | 10 x 10 x 4.25 in | 24 lb | \$2,242.00 |
| 201410 | 10 lb (5 kg) | 10 x 10 x 4.25 in | 24 lb | \$2,242.00 |
| 201411 | 25 lb (10 kg) | 10 x 10 x 4.25 in | 24 lb | \$2,242.00 |
| 201412 | 25 lb (10 kg) | 12 x 12 x 4.25 in | 27 lb | \$2,332.00 |
| 201413 | 50 lb (25 kg) | 12 x 12 x 4.25 in | 27 lb | \$2,332.00 |
| 201414 | 100 lb (50 kg) | 12 x 12 x 4.25 in | 27 lb | \$2,332.00 |
| 115-230 VAC, LED, Numeric, Euro Plug-Type E | | | | |
| 201415 | 5 lb (2.5 kg) | 10 x 10 x 4.25 in | 24 lb | \$2,242.00 |
| 201416 | 10 lb (5 kg) | 10 x 10 x 4.25 in | 24 lb | \$2,242.00 |
| 201417 | 25 lb (10 kg) | 10 x 10 x 4.25 in | 24 lb | \$2,242.00 |
| 201418 | 25 lb (10 kg) | 12 x 12 x 4.25 in | 27 lb | \$2,332.00 |
| 201419 | 50 lb (25 kg) | 12 x 12 x 4.25 in | 27 lb | \$2,332.00 |
| 201420 | 100 lb (50 kg) | 12 x 12 x 4.25 in | 27 lb | \$2,332.00 |



† US plug (NA) - Type B

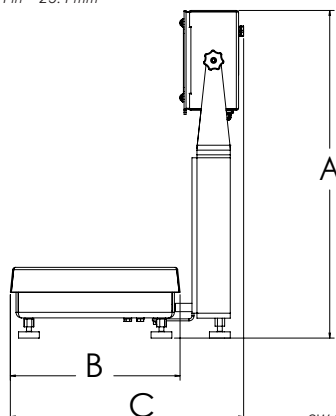


†† Euro Plug - Type E

Dimensions

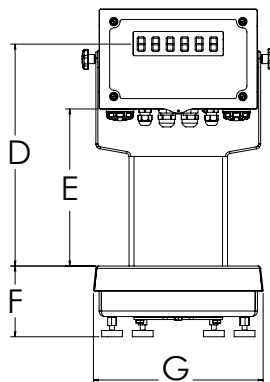
| CW-90XB Bench Scale and 680 Indicator | | | |
|---------------------------------------|----------|---|----------|
| 10 x 10 in | | | |
| A | 19.56 in | E | 9.31 in |
| B | 10.25 in | F | 4.25 in |
| C | 15.83 in | G | 10.25 in |
| D | 13.31 in | | |

Note: 1 in = 25.4 mm



| 12 x 12 in | | | |
|------------|----------|---|----------|
| A | 19.56 in | E | 9.31 in |
| B | 12.25 in | F | 4.25 in |
| C | 16.83 in | G | 12.25 in |
| D | 13.31 in | | |

Note: 1 in = 25.4 mm



CW-90XB with 680 indicator

Standard Features

- Package includes scale with IP69K stainless steel hermetically sealed load cell with an indicator and 12-inch column
- Factory calibrated with indicator setup and configured for 5,000 divisions
- Scale includes rubber feet to provide exceptional traction and avoid scratching surfaces along with removable top cover for ease of cleaning
- AC power 100 to 240 VAC
- Full numeric keypad
- LED display suitable for a variety of environments
- Battery backed time and date
- Standard RS-232 serial ports for connecting to a variety of peripherals
- Ethernet TCP/IP

CW-90XB Specifications

Load Cell, NTEP Certified:

IP69K stainless steel and hermetically sealed

Scale Construction:

304 stainless steel

Maximum Overload:

180% to 200% depending on capacity

Overload Protection:

Five-point, independently adjusted

Scale Frame:

AISI304L, straight line finish, Ra = 45 +/- 10

Scale Cover:

AISI304L, straight line finish, Ra = 45 +/- 10

Cable Length:

34 in

Compensated Temperature Range:

14 °F to 104 °F (-10 °C to 40 °C)

Approvals:

NTEP CC 95-072, Class III 5,000 d

Measurement Canada AM-5082

Load cell is FM approved

Warranty:

Three-year limited (includes water ingress)

680 Specifications

Communication Ports:

Two RS-232 (three-wire)

RS-485/422 (two-wire or four-wire)

Micro USB (device)

Ethernet TCP/IP (10/100)

Display:

Seven 0.8-inch tall, seven-segment digits

Status Annunciators:

Eight LED annunciators

Keys/Buttons:

Flat membrane panel, tactile feel

(18 buttons plus ON/OFF)

Rating/Material:

Rating: IP69K (IP66 with RJ45)

Material: AISI 304 stainless steel

Approvals:

NTEP CC 19-021

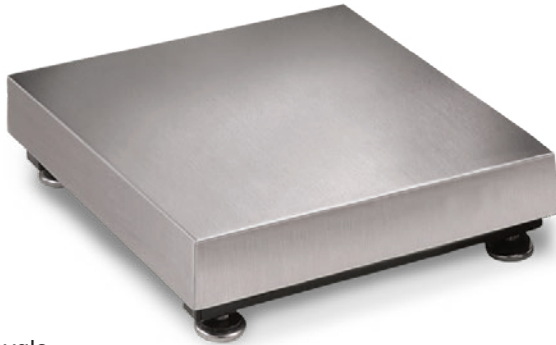
Measurement Canada AM-6121C

cULus Listed

CE Marked

Warranty:

Two-year limited



Approvals



† Load cell approval

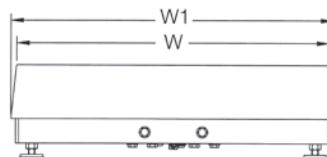
†† Load cell approval

Part Number/Price

| Part # | Capacity | Platform Dimensions (L x W x H) | Est. Weight | Price |
|----------|-------------------|---------------------------------|-------------|------------|
| 18580 † | 30 lb (15 kg) | 12 x 12 x 4.12 in | 20 lb | \$890.00 |
| 18582 † | 50 lb (25 kg) | 12 x 12 x 4.12 in | 20 lb | \$890.00 |
| 18584 † | 100 lb (50 kg) | 12 x 12 x 4.12 in | 20 lb | \$890.00 |
| 18586 †† | 50 lb (25 kg) | 12 x 18 x 4.12 in | 37 lb | \$980.00 |
| 18588 †† | 100 lb (50 kg) | 12 x 18 x 4.12 in | 37 lb | \$980.00 |
| 18590 † | 50 lb (25 kg) | 18 x 18 x 5.25 in | 68 lb | \$1,210.00 |
| 18592 † | 100 lb (50 kg) | 18 x 18 x 5.25 in | 68 lb | \$1,210.00 |
| 18594 † | 150 lb (75 kg) | 18 x 18 x 5.25 in | 68 lb | \$1,210.00 |
| 18596 † | 200 lb (100 kg) | 18 x 18 x 5.25 in | 68 lb | \$1,210.00 |
| 18598 † | 250 lb (125 kg) | 18 x 18 x 5.25 in | 68 lb | \$1,210.00 |
| 18600 † | 300 lb (150 kg) | 18 x 18 x 5.25 in | 68 lb | \$1,210.00 |
| 18602 † | 500 lb (250 kg) | 18 x 18 x 5.25 in | 68 lb | \$1,210.00 |
| 18604 †† | 1,000 lb (500 kg) | 18 x 18 x 5.25 in | 68 lb | \$1,210.00 |
| 18606 † | 50 lb (25 kg) | 24 x 18 x 5.25 in | 78 lb | \$1,335.00 |
| 18608 † | 100 lb (50 kg) | 24 x 18 x 5.25 in | 78 lb | \$1,335.00 |
| 18610 † | 150 lb (75 kg) | 24 x 18 x 5.25 in | 78 lb | \$1,335.00 |
| 18612 † | 200 lb (100 kg) | 24 x 18 x 5.25 in | 78 lb | \$1,335.00 |
| 18614 † | 250 lb (125 kg) | 24 x 18 x 5.25 in | 78 lb | \$1,335.00 |
| 18616 † | 300 lb (150 kg) | 24 x 18 x 5.25 in | 78 lb | \$1,335.00 |
| 18618 † | 500 lb (250 kg) | 24 x 18 x 5.25 in | 78 lb | \$1,335.00 |
| 18620 †† | 1,000 lb (500 kg) | 24 x 18 x 5.25 in | 78 lb | \$1,335.00 |
| 18622 † | 100 lb (50 kg) | 24 x 24 x 5.25 in | 78 lb | \$1,470.00 |
| 18624 † | 150 lb (75 kg) | 24 x 24 x 5.25 in | 84 lb | \$1,470.00 |
| 18626 † | 200 lb (100 kg) | 24 x 24 x 5.25 in | 84 lb | \$1,470.00 |
| 18628 † | 250 lb (125 kg) | 24 x 24 x 5.25 in | 84 lb | \$1,470.00 |
| 18630 † | 300 lb (150 kg) | 24 x 24 x 5.25 in | 84 lb | \$1,400.00 |
| 18632 † | 500 lb (250 kg) | 24 x 24 x 5.25 in | 84 lb | \$1,470.00 |
| 18634 †† | 1,000 lb (500 kg) | 24 x 24 x 5.25 in | 84 lb | \$1,470.00 |

Options/Accessories

| Part # | Description | Catalog Page # |
|---------|--|--------------------------|
| Consult | Scale columns | See page 201 |
| Consult | Ball transfer and roller conveyor scale tops | See page 200 |
| Consult | Mobile scale carts | See page 196 to page 199 |



Standard Features

- Painted mild steel frame with 304 stainless steel cover
- Base design isolates load cell from overloads and shock loads for added durability
- Specially designed adjustable support feet provide exceptional traction and will not scratch surfaces

Specifications

Load Cell, NTEP Certified:

IP66 aluminum, environmentally sealed

Output Impedance:

350 ohm

Maximum Overload:

150% to 200% depending on capacity

Overload Protection:

Five-point, independently adjusted

Scale Frame:

Mild steel powder coated black

Scale Cover:

AISI304L, straight line finish, Ra=45 +/- 10

Cable Length:

10 ft (3 m)

Compensated Temperature Range:

14 °F to 104 °F (-10 °C to 40 °C)

Warranty:

Two-year limited

Approvals:

NTEP CC 95-072, Class III, 5,000 d
Measurement Canada AM-5082

Dimensions

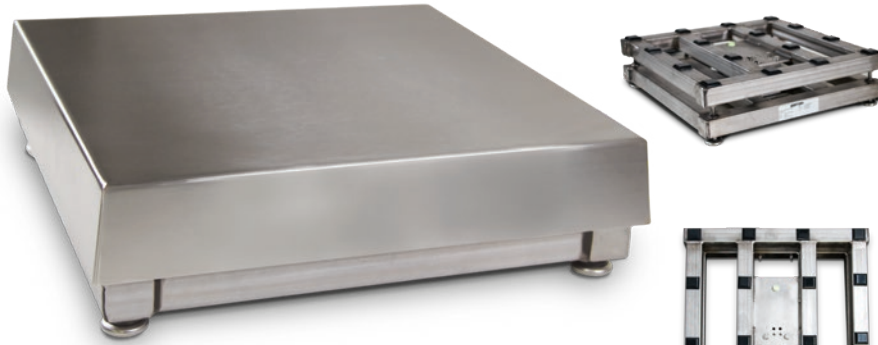
| BenchMark MS | | | |
|--------------|----------|----|----------|
| 12 x 12 in | | | |
| H | 4.12 in | W | 12.00 in |
| L | 12.00 in | W1 | 12.50 in |
| L1 | 12.50 in | | |
| 12 x 18 in | | | |
| H | 4.12 in | W | 18.00 in |
| L | 12.00 in | W1 | 18.50 in |
| L1 | 12.50 in | | |
| 18 x 18 in | | | |
| H | 5.25 in | W | 18.00 in |
| L | 18.00 in | W1 | 18.75 in |
| L1 | 18.75 in | | |
| 24 x 18 in | | | |
| H | 5.25 in | W | 18.00 in |
| L | 24.00 in | W1 | 18.75 in |
| L1 | 24.75 in | | |
| 24 x 24 in | | | |
| H | 5.25 in | W | 24.00 in |
| L | 24.00 in | W1 | 24.75 in |
| L1 | 24.75 in | | |

Note: 1 in = 25.4 mm

BenchMark® SS

Stainless Steel Bench Scale

BENCH SCALES



Approvals

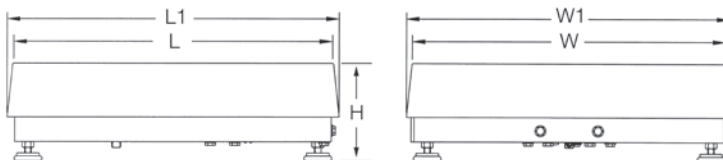


Part Number/Price

| Part # | Capacity | Platform Dimensions (L x W x H) | Est. Weight | Price |
|----------|-------------------|---------------------------------|-------------|------------|
| 186222 † | 50 lb (25 kg) | 12 x 18 x 4.00 in | 37 lb | \$1,040.00 |
| 186223 † | 100 lb (50 kg) | 12 x 18 x 4.00 in | 37 lb | \$1,040.00 |
| 18591 † | 50 lb (25 kg) | 18 x 18 x 5.25 in | 68 lb | \$1,440.00 |
| 18593 † | 100 lb (50 kg) | 18 x 18 x 5.25 in | 68 lb | \$1,440.00 |
| 18595 † | 150 lb (75 kg) | 18 x 18 x 5.25 in | 68 lb | \$1,440.00 |
| 18597 † | 200 lb (100 kg) | 18 x 18 x 5.25 in | 68 lb | \$1,440.00 |
| 18599 † | 250 lb (125 kg) | 18 x 18 x 5.25 in | 68 lb | \$1,440.00 |
| 18601 † | 300 lb (150 kg) | 18 x 18 x 5.25 in | 68 lb | \$1,440.00 |
| 18603 † | 500 lb (250 kg) | 18 x 18 x 5.25 in | 68 lb | \$1,440.00 |
| 18605 †† | 1,000 lb (500 kg) | 18 x 18 x 5.25 in | 68 lb | \$1,440.00 |
| 18607 † | 50 lb (25 kg) | 24 x 18 x 5.25 in | 78 lb | \$1,715.00 |
| 18609 † | 100 lb (50 kg) | 24 x 18 x 5.25 in | 78 lb | \$1,715.00 |
| 18611 † | 150 lb (75 kg) | 24 x 18 x 5.25 in | 78 lb | \$1,715.00 |
| 18613 † | 200 lb (100 kg) | 24 x 18 x 5.25 in | 78 lb | \$1,715.00 |
| 18615 † | 250 lb (125 kg) | 24 x 18 x 5.25 in | 78 lb | \$1,715.00 |
| 18617 † | 300 lb (150 kg) | 24 x 18 x 5.25 in | 78 lb | \$1,715.00 |
| 18619 † | 500 lb (250 kg) | 24 x 18 x 5.25 in | 78 lb | \$1,715.00 |
| 18621 †† | 1,000 lb (500 kg) | 24 x 18 x 5.25 in | 78 lb | \$1,715.00 |
| 18623 † | 100 lb (50 kg) | 24 x 24 x 5.25 in | 84 lb | \$2,110.00 |
| 18625 † | 150 lb (75 kg) | 24 x 24 x 5.25 in | 84 lb | \$2,110.00 |
| 18627 † | 200 lb (100 kg) | 24 x 24 x 5.25 in | 84 lb | \$2,110.00 |
| 18629 † | 250 lb (125 kg) | 24 x 24 x 5.25 in | 84 lb | \$2,110.00 |
| 18631 † | 300 lb (150 kg) | 24 x 24 x 5.25 in | 84 lb | \$2,110.00 |
| 18633 † | 500 lb (250 kg) | 24 x 24 x 5.25 in | 84 lb | \$2,110.00 |
| 18635 †† | 1,000 lb (500 kg) | 24 x 24 x 5.25 in | 84 lb | \$2,110.00 |

Options/Accessories

| Part # | Description | Catalog Page # |
|---------|--|--------------------------|
| Consult | Scale columns | See page 201 |
| Consult | Ball transfer and roller conveyor scale tops | See page 200 |
| Consult | Mobile scale carts | See page 196 to page 199 |



Standard Features

- 304 stainless steel frame and cover
- Base design isolates load cell from overloads and shock loads for added durability
- Specially designed adjustable support feet provide exceptional traction and will not scratch surfaces

Specifications

Load Cell, NTEP Certified:

IP66 aluminum, environmentally sealed

Output Impedance:

350 ohm

Maximum Overload:

150% to 200% depending on capacity

Overload Protection:

Five-point, independently adjusted

Scale Frame:

AISI304L, glass bead blasted for even appearance

Scale Cover:

AISI304L, straight line finish, Ra=45 +/- 10

Cable Length:

10 ft (3 m)

Compensated Temperature Range:

14 °F to 104 °F (-10 °C to 40 °C)

Warranty:

Two-year limited

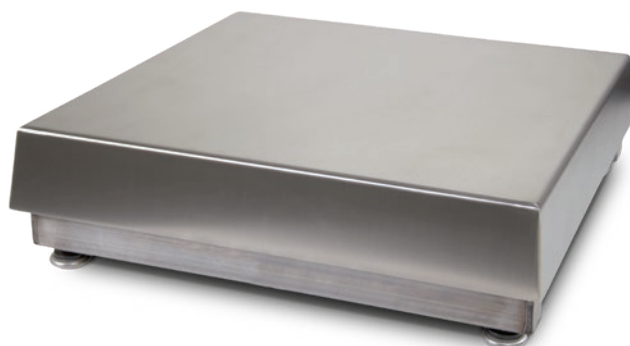
Approvals:

NTEP CC 95-072, Class III, 5,000 d
Measurement Canada AM-5082

Dimensions

| BenchMark SS | | | |
|--------------|----------|----|----------|
| 12 x 18 in | | | |
| H | 4.00 in | W | 18.00 in |
| L | 12.00 in | W1 | 18.50 in |
| L1 | 12.50 in | | |
| 18 x 18 in | | | |
| H | 5.25 in | W | 18.00 in |
| L | 18.00 in | W1 | 18.75 in |
| L1 | 18.75 in | | |
| 24 x 18 in | | | |
| H | 5.25 in | W | 18.00 in |
| L | 24.00 in | W1 | 18.75 in |
| L1 | 24.75 in | | |
| 24 x 24 in | | | |
| H | 5.25 in | W | 24.00 in |
| L | 24.00 in | W1 | 24.75 in |
| L1 | 24.75 in | | |

Note: 1 in = 25.4 mm



Approvals

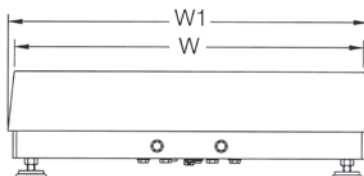
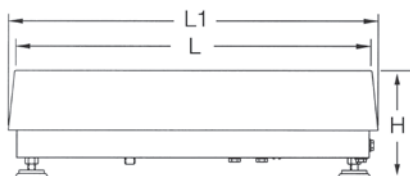


Part Number/Price

| Part # | Capacity | Platform Dimensions (L x W x H) | Est. Weight | Price |
|--------|-------------------|---------------------------------|-------------|------------|
| 186897 | 50 lb (25 kg) | 12 x 18 x 4.00 in | 37 lb | \$1,480.00 |
| 186898 | 100 lb (50 kg) | 12 x 18 x 4.00 in | 37 lb | \$1,480.00 |
| 86952 | 50 lb (25 kg) | 18 x 18 x 5.25 in | 68 lb | \$1,780.00 |
| 86953 | 100 lb (50 kg) | 18 x 18 x 5.25 in | 68 lb | \$1,780.00 |
| 86954 | 150 lb (75 kg) | 18 x 18 x 5.25 in | 68 lb | \$1,780.00 |
| 86955 | 200 lb (100 kg) | 18 x 18 x 5.25 in | 68 lb | \$1,780.00 |
| 86956 | 250 lb (125 kg) | 18 x 18 x 5.5 in | 68 lb | \$2,130.00 |
| 86957 | 300 lb (150 kg) | 18 x 18 x 5.5 in | 68 lb | \$2,130.00 |
| 86958 | 500 lb (250 kg) | 18 x 18 x 5.5 in | 68 lb | \$2,130.00 |
| 86959 | 1,000 lb (500 kg) | 18 x 18 x 5.5 in | 68 lb | \$2,130.00 |
| 86960 | 50 lb (25 kg) | 24 x 18 x 5.5 in | 78 lb | \$2,405.00 |
| 86961 | 100 lb (50 kg) | 24 x 18 x 5.5 in | 78 lb | \$2,405.00 |
| 86962 | 150 lb (75 kg) | 24 x 18 x 5.5 in | 78 lb | \$2,405.00 |
| 86963 | 200 lb (100 kg) | 24 x 18 x 5.5 in | 78 lb | \$2,405.00 |
| 86964 | 250 lb (125 kg) | 24 x 18 x 5.5 in | 78 lb | \$2,405.00 |
| 86965 | 300 lb (150 kg) | 24 x 18 x 5.5 in | 78 lb | \$2,405.00 |
| 86966 | 500 lb (250 kg) | 24 x 18 x 5.5 in | 78 lb | \$2,405.00 |
| 86967 | 1,000 lb (500 kg) | 24 x 18 x 5.5 in | 78 lb | \$2,405.00 |
| 86968 | 100 lb (50 kg) | 24 x 24 x 5.5 in | 84 lb | \$2,800.00 |
| 86969 | 150 lb (75 kg) | 24 x 24 x 5.5 in | 84 lb | \$2,800.00 |
| 86970 | 200 lb (100 kg) | 24 x 24 x 5.5 in | 84 lb | \$2,800.00 |
| 86971 | 250 lb (125 kg) | 24 x 24 x 5.5 in | 84 lb | \$2,800.00 |
| 86972 | 300 lb (150 kg) | 24 x 24 x 5.5 in | 84 lb | \$2,800.00 |
| 86973 | 500 lb (250 kg) | 24 x 24 x 5.5 in | 84 lb | \$2,800.00 |
| 86974 | 1,000 lb (500 kg) | 24 x 24 x 5.5 in | 84 lb | \$2,800.00 |

Options/Accessories

| Part # | Description | Catalog Page # |
|---------|--|--------------------------|
| Consult | Scale columns | See page 201 |
| Consult | Ball transfer and roller conveyor scale tops | See page 200 |
| Consult | Mobile scale carts | See page 196 to page 199 |



Standard Features

- 304 stainless steel frame and cover
- Base design isolates load cell from overloads and shock loads for added durability
- Specially designed adjustable support feet provide exceptional traction and will not scratch surfaces

Specifications

Load Cell, NTEP Certified:

IP69K stainless steel, hermetically sealed

Output Impedance:

1,000 ohm

Maximum Overload:

150% to 200% depending on capacity

Overload Protection:

Five-point, independently adjusted

Scale Frame:

AISI304L, glass bead blasted for even appearance

Scale Cover:

AISI304L, straight line finish, Ra=45 +/- 10

Cable Length:

10 ft (3 m)

Compensated Temperature Range:

14 °F to 104 °F (-10 °C to 40 °C)

Warranty:

Three-year limited
(includes water ingress)

Approvals:

NTEP CC 95-072, Class III, 5,000 d
Measurement Canada AM-5082
Load cell is FM approved

Dimensions

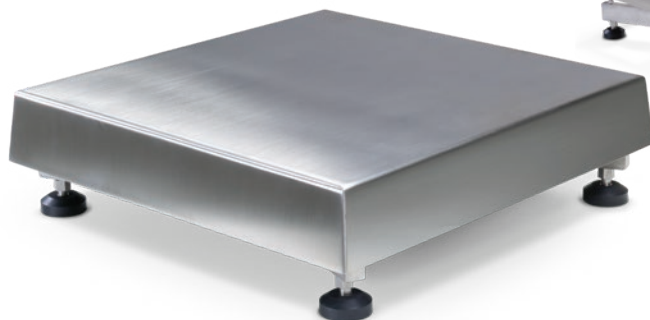
| BenchMark HE | | | |
|-------------------|----------|----|----------|
| 12 x 18 in | | | |
| H | 4.00 in | W | 18.00 in |
| L | 12.00 in | W1 | 18.50 in |
| L1 | 12.50 in | | |
| 18 x 18 x 5.25 in | | | |
| H | 5.25 in | W | 18.00 in |
| L | 18.00 in | W1 | 18.75 in |
| L1 | 18.75 in | | |
| 18 x 18 x 5.5 in | | | |
| H | 5.50 in | W | 18.00 in |
| L | 18.00 in | W1 | 18.75 in |
| L1 | 18.75 in | | |
| 24 x 18 in | | | |
| H | 5.50 in | W | 18.00 in |
| L | 24.00 in | W1 | 18.75 in |
| L1 | 24.75 in | | |
| 24 x 24 in | | | |
| H | 5.50 in | W | 24.00 in |
| L | 24.00 in | W1 | 24.75 in |
| L1 | 24.75 in | | |

Note: 1 in = 25.4 mm

BenchMark® HE-X

Hostile Environment Extreme Bench Scale

BENCH SCALES



Specifications

Load Cell, NTEP Certified:

IP69K stainless steel, hermetically sealed

Output Impedance:

1,000 ohm

Maximum Overload:

150% to 200% depending on capacity

Overload Protection:

Five-point, independently adjusted

Scale Frame:

AISI304L, glass bead blasted for even appearance

Scale Cover:

AISI304L, straight line finish, Ra=45 +/- 10

Cable Length:

10 ft (3 m)

Compensated Temperature Range:

14 °F to 104 °F (-10 °C to 40 °C)

Warranty:

Three-year limited (includes water ingress)

Approvals:

Load cell is FM approved

Approvals



Standard Features

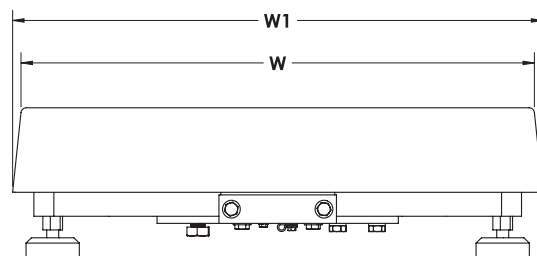
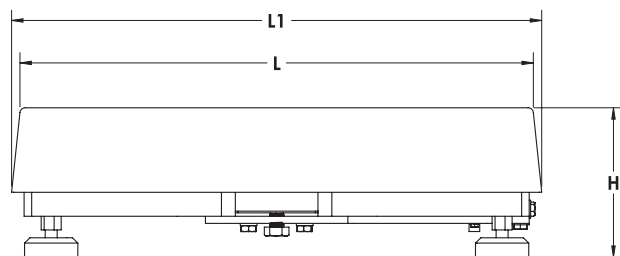
- IP69K stainless steel load cell
- Rugged washdown design, rigid 304 stainless steel frame and cover constructed with continuous welds
- Four adjustable stainless steel support feet
- Meets Sanitary Design Principles
- Meets HACCP requirements

Dimensions

| BenchMark HE-X | | | |
|----------------|----------|----|----------|
| 12 × 18 in | | | |
| H | 5.25 in | W | 18.00 in |
| L | 12.00 in | W1 | 18.50 in |
| L1 | 12.50 in | | |
| 18 × 18 in | | | |
| H | 5.25 in | W | 18.00 in |
| L | 18.00 in | W1 | 18.75 in |
| L1 | 18.75 in | | |

| 24 × 18 in | | | |
|------------|----------|----|----------|
| H | 5.25 in | W | 24.00 in |
| L | 18.00 in | W1 | 24.75 in |
| L1 | 18.75 in | | |
| 24 × 24 in | | | |
| H | 5.25 in | W | 24.00 in |
| L | 24.00 in | W1 | 24.75 in |
| L1 | 24.75 in | | |

Note: 1 in = 25.4 mm



Part Number/Price

| Part # | Capacity | Platform Dimensions (L × W × H) | Est. Weight | Price |
|--------|-------------------|---------------------------------|-------------|------------|
| 192346 | 50 lb (25 kg) | 12 × 18 × 5.25 in | 59 lb | \$2,925.00 |
| 192347 | 100 lb (50 kg) | 12 × 18 × 5.25 in | 59 lb | \$2,925.00 |
| 191455 | 50 lb (25 kg) | 18 × 18 × 5.25 in | 73 lb | \$3,100.00 |
| 191456 | 100 lb (50 kg) | 18 × 18 × 5.25 in | 73 lb | \$3,100.00 |
| 191457 | 150 lb (75 kg) | 18 × 18 × 5.25 in | 73 lb | \$3,100.00 |
| 191458 | 200 lb (100 kg) | 18 × 18 × 5.25 in | 73 lb | \$3,100.00 |
| 191459 | 250 lb (125 kg) | 18 × 18 × 5.25 in | 73 lb | \$3,100.00 |
| 191460 | 300 lb (150 kg) | 18 × 18 × 5.25 in | 73 lb | \$3,100.00 |
| 191461 | 500 lb (250 kg) | 18 × 18 × 5.25 in | 73 lb | \$3,100.00 |
| 191462 | 1,000 lb (500 kg) | 18 × 18 × 5.25 in | 73 lb | \$3,100.00 |
| 191467 | 50 lb (25 kg) | 18 × 24 × 5.25 in | 90 lb | \$3,345.00 |
| 191469 | 100 lb (50 kg) | 18 × 24 × 5.25 in | 90 lb | \$3,345.00 |
| 191470 | 150 lb (75 kg) | 18 × 24 × 5.25 in | 90 lb | \$3,345.00 |
| 191472 | 200 lb (100 kg) | 18 × 24 × 5.25 in | 90 lb | \$3,345.00 |
| 191473 | 250 lb (125 kg) | 18 × 24 × 5.25 in | 90 lb | \$3,345.00 |
| 191474 | 300 lb (150 kg) | 18 × 24 × 5.25 in | 90 lb | \$3,345.00 |
| 191475 | 500 lb (250 kg) | 18 × 24 × 5.25 in | 90 lb | \$3,345.00 |
| 191476 | 1,000 lb (500 kg) | 18 × 24 × 5.25 in | 90 lb | \$3,345.00 |
| 191479 | 100 lb (50 kg) | 24 × 24 × 5.25 in | 122 lb | \$3,600.00 |
| 191480 | 150 lb (75 kg) | 24 × 24 × 5.25 in | 122 lb | \$3,600.00 |
| 191481 | 200 lb (100 kg) | 24 × 24 × 5.25 in | 122 lb | \$3,600.00 |
| 191482 | 250 lb (125 kg) | 24 × 24 × 5.25 in | 122 lb | \$3,600.00 |
| 191483 | 300 lb (150 kg) | 24 × 24 × 5.25 in | 122 lb | \$3,600.00 |
| 191485 | 500 lb (250 kg) | 24 × 24 × 5.25 in | 122 lb | \$3,600.00 |
| 191486 | 1,000 lb (500 kg) | 24 × 24 × 5.25 in | 122 lb | \$3,600.00 |

Options/Accessories

| Part # | Description | Catalog Page # |
|---------|--|--------------------------|
| Consult | Scale columns | See page 201 |
| Consult | Ball transfer and roller conveyor scale tops | See page 200 |
| Consult | Mobile scale carts | See page 196 to page 199 |

BenchMark® LP

Low-Profile Bench Scale

BENCH SCALES



Ideal for aviation weighing. A complete system can be sold with the Tracer® AV2. Reference Aviation section for specifications.

Approvals



Part Number/Price

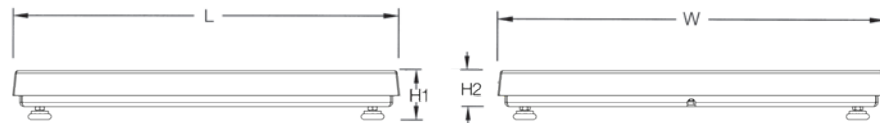
| Part # | Capacity | Platform Dimensions L x W x H1 (H2) | Est. Weight | Price |
|---------|-------------------|-------------------------------------|-------------|------------|
| 97662 | 100 lb (50 kg) | 18 x 18 x 2.63 in (1.67 in*) | 75 lb | \$1,385.00 |
| 97663 | 250 lb (125 kg) | 18 x 18 x 2.50 in (1.74 in*) | 85 lb | \$1,415.00 |
| 97664 | 500 lb (250 kg) | 18 x 18 x 2.69 in (1.93 in*) | 85 lb | \$1,450.00 |
| 97665 | 100 lb (50 kg) | 24 x 24 x 2.66 in (1.69 in*) | 85 lb | \$1,655.00 |
| 97666 | 250 lb (125 kg) | 24 x 24 x 2.83 in (2.07 in*) | 100 lb | \$1,680.00 |
| 97667 | 500 lb (250 kg) | 24 x 24 x 3.02 in (2.26 in*) | 100 lb | \$1,715.00 |
| 97668 | 500 lb (250 kg) | 30 x 30 x 3.02 in (2.26 in*) | 150 lb | \$1,975.00 |
| 97669** | 1,000 lb (500 kg) | 30 x 30 x 3.47 in (2.70 in*) | 190 lb | \$2,040.00 |
| 97670 | 500 lb (250 kg) | 36 x 36 x 3.02 in (2.26 in*) | 175 lb | \$2,590.00 |
| 97671** | 1,000 lb (500 kg) | 36 x 36 x 3.47 in (2.70 in*) | 175 lb | \$2,650.00 |

*Height without adjustable leveling feet

** Non-NTEP or Measurement Canada Approved

Options/Accessories

| Part # | Description | Price |
|--------|--|---------|
| 208904 | 20 ft cable with DB-9 connector for connecting to Tracer AV2 | \$50.00 |



Dimensions

| BenchMark LP | | | |
|--------------|---------|---|----------|
| PN 97662 | | | |
| H1 | 2.63 in | L | 18.00 in |
| H2 | 1.67 in | W | 18.00 in |
| PN 97663 | | | |
| H1 | 2.50 in | L | 18.00 in |
| H2 | 1.74 in | W | 18.00 in |
| PN 97664 | | | |
| H1 | 2.69 in | L | 18.00 in |
| H2 | 1.93 in | W | 18.00 in |
| PN 97665 | | | |
| H1 | 2.66 in | L | 24.00 in |
| H2 | 1.69 in | W | 24.00 in |

Note: 1 in = 25.4 mm

| PN 97666 | | | |
|----------|---------|---|----------|
| H1 | 2.83 in | L | 24.00 in |
| H2 | 2.07 in | W | 24.00 in |
| PN 97667 | | | |
| H1 | 3.02 in | L | 24.00 in |
| H2 | 2.26 in | W | 24.00 in |
| PN 97668 | | | |
| H1 | 3.02 in | L | 30.00 in |
| H2 | 2.26 in | W | 30.00 in |
| PN 97669 | | | |
| H1 | 3.47 in | L | 30.00 in |
| H2 | 2.70 in | W | 30.00 in |

Note: 1 in = 25.4 mm

Standard Features

- Mild steel base construction
- 304 stainless steel cover
- ABS junction box
- Four planar beam load cells
- Adjustable leveling feet
- 20 ft of EL147 load cell cable
- Holes in lower frame for mounting scale without adjustable leveling feet

Specifications

Load Cell, Rated Output:

IP65 aluminum, 1.0 mV/V ±10%

End Load Capacity:

60% of full scale capacity

Cable Length:

20 ft (6.1 m) for connecting junction box to indicator

Scale Frame:

Mild steel powder coated black

Scale Cover:

AISI304L, straight line finish, Ra=45 +/- 10

Warranty:

Two-year limited

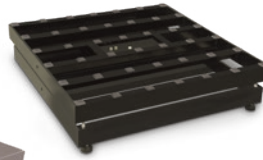
Approvals:

NTEP CC 08-017, Class III 5,000 d
(except 1,000 lb capacity)
Measurement Canada AM 5660
(except 500 kg capacity)

BenchMark® HD

Heavy Duty Bench Scale

BENCH SCALES



Standard Features

- Heavy-duty designed mild steel base construction with 304 stainless steel cover
- Polyurethane rubber leveling feet with stainless steel stems

Specifications

Load Cell, NTEP Certified:

IP67 aluminum, environmentally sealed

Output Impedance:

350 ohm

Maximum Overload:

200%

Overload Protection:

Five-point, independently adjusted

Scale Frame:

Mild steel powder coated black

Scale Cover:

AISI304L, straight line finish, Ra=45 +/- 10

Cable Length:

10 ft (3 m)

Compensated Temperature Range:

14 °F to 104 °F (-10 °C to 40 °C)

Warranty:

Two-year limited

Approvals:

NTEP CC 06-010, Class III 5,000 d

Measurement Canada AM-5625

Load cell is cFMus approved

Approvals



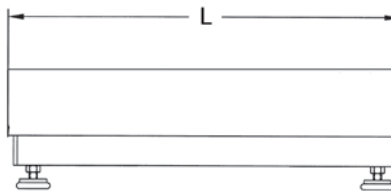
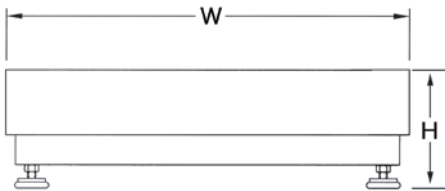
Part Number/Price

| Part # | Capacity | Platform Dimensions (L x W x H) | Est. Weight | Price |
|--------|-----------------|---------------------------------|-------------|------------|
| 93414 | 250 lb (125 kg) | 30 x 30 x 8.75 in | 300 lb | \$2,125.00 |
| 93415 | 500 lb (225 kg) | 30 x 30 x 8.75 in | 300 lb | \$2,125.00 |
| 93416 | 250 lb (125 kg) | 36 x 36 x 8.75 in | 330 lb | \$2,575.00 |
| 93417 | 500 lb (225 kg) | 36 x 36 x 8.75 in | 330 lb | \$2,575.00 |

Dimensions

| BenchMark HD | | | |
|--------------|----------|---|----------|
| 30 x 30 in | | | |
| H | 8.75 in | W | 30.00 in |
| L | 30.00 in | | |
| 36 x 36 in | | | |
| H | 8.75 in | W | 36.00 in |
| L | 36.00 in | | |

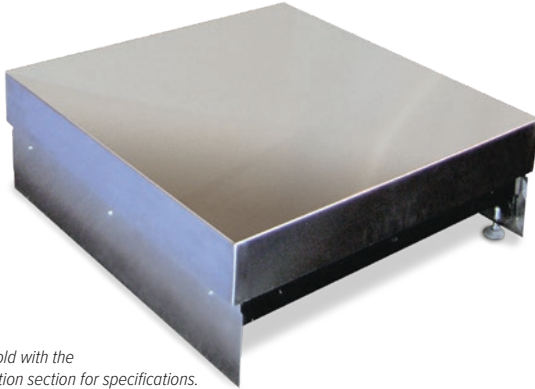
Note: 1 in = 25.4 mm



BenchMark® HD-1 Aviation

Heavy Duty Bench Scale

BENCH SCALES



Ideal for aviation weighing.
A complete system can be sold with the
Tracer® AV2. Reference Aviation section for specifications.

Approvals



Part Number/Price

| Part # | Capacity | Platform Dimensions | Price |
|---------|-----------------|---------------------|---------|
| Consult | 500 lb (225 kg) | W × D × 12 in | Consult |

Note: Maximum size is up to 36in × 36in, height is always 12in

W × D supplied by customer

Standard Features

- Heavy-duty scale designed mild steel base construction with 304 stainless steel cover
- Polyurethane rubber leveling feet with stainless steel stems
- Load cell comes standard with DB-9 connector for connecting to Tracer AV2
- Front and back kick plates

Specifications

Load Cell, NTEP Certified:

IP67 aluminum, environmentally sealed

Output Impedance:

350 ohm

Maximum Overload:

200%

Overload Protection:

Five-point, independently adjusted

Cable Length:

10 ft (3 m)

Compensated Temperature Range:

14 °F to 104 °F (-10 °C to 40 °C)

Warranty:

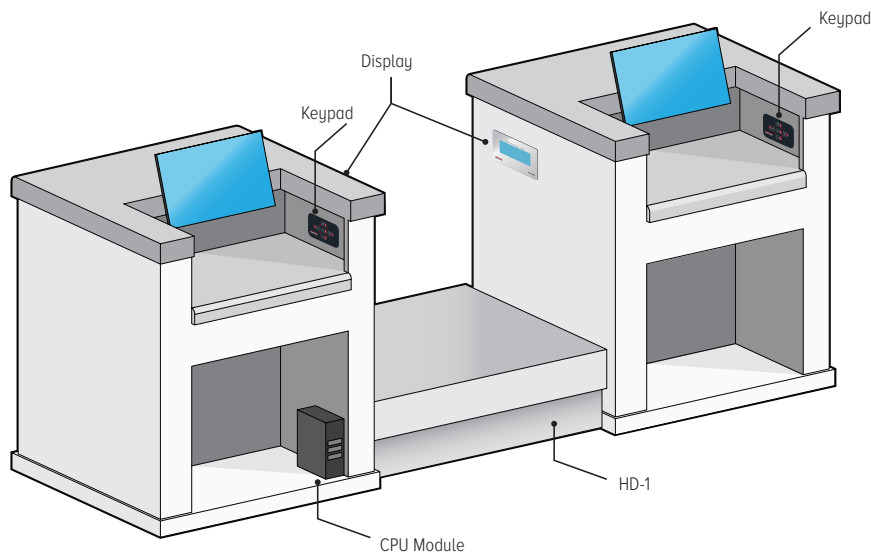
Two-year limited

Approvals:

NTEP CC 06-010, Class III 5,000 d

Measurement Canada AM-5625

Load cell is cFMus approved

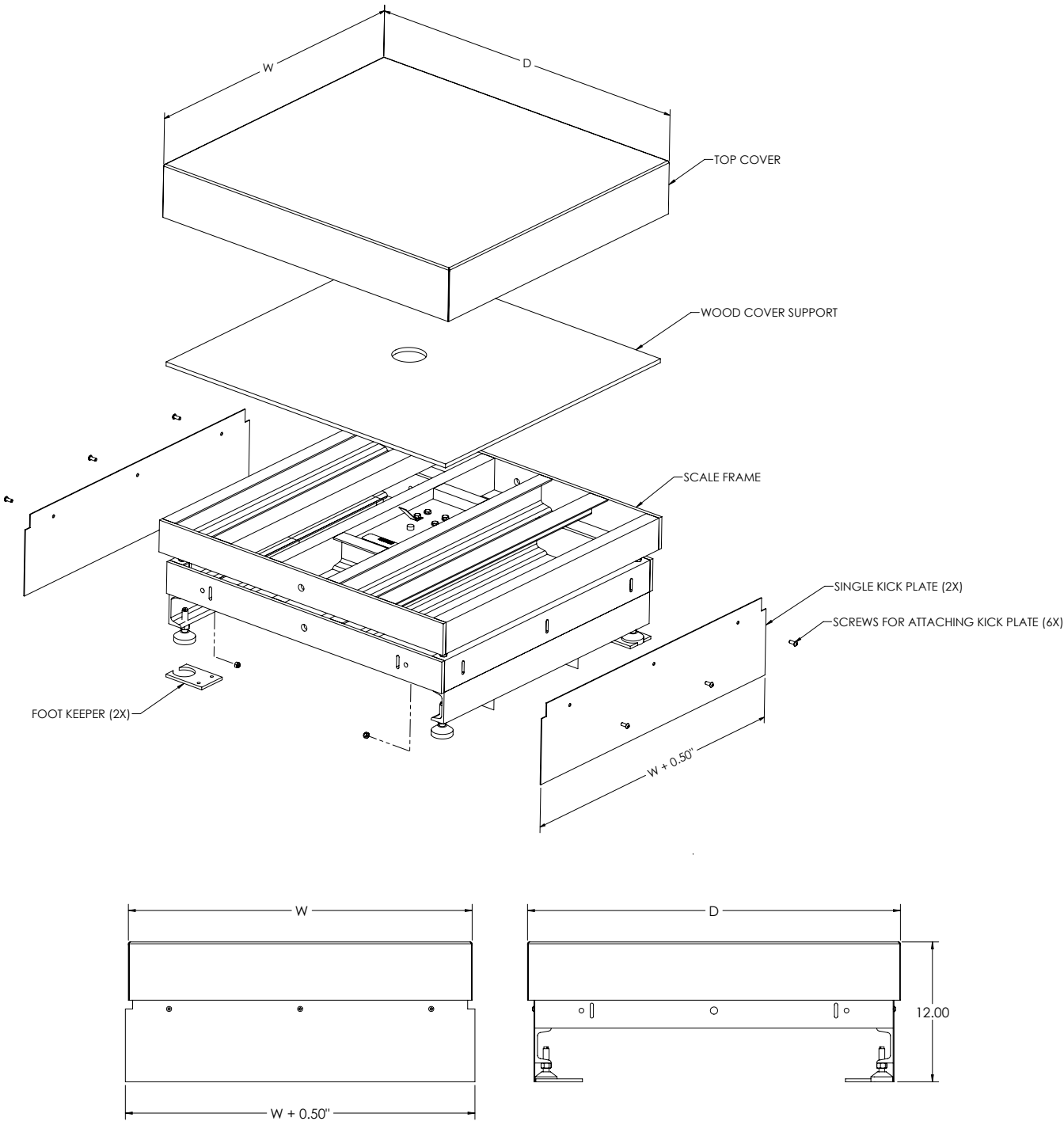


Baggage weighing system with Benchmark HD-1 and Tracer AV2 Dual LCD Panel Mount Display, Dual keypad

BenchMark® HD-1 Aviation

Heavy Duty Bench Scale

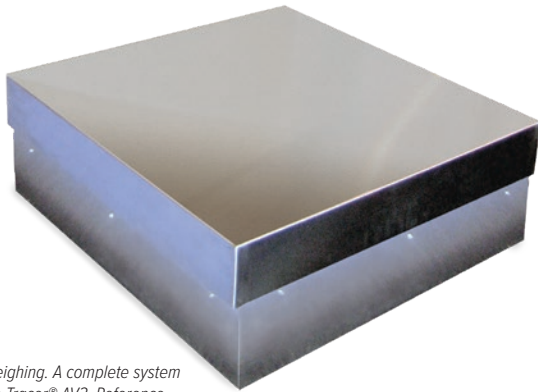
BENCH SCALES




BenchMark® HD-2 Aviation

Heavy Duty Bench Scale

BENCH SCALES



 Ideal for aviation weighing. A complete system can be sold with the Tracer® AV2. Reference Aviation section for specifications.

Approvals



Part Number/Price

| Part # | Capacity | Platform Dimensions | Price |
|---------|-----------------|---------------------|---------|
| Consult | 500 lb (225 kg) | W × D × 12 in | Consult |

Note: Maximum size is up to 36in × 36in, height is always 12in

W × D supplied by customer.

Standard Features

- Heavy-duty scale designed mild steel base construction with 304 stainless steel cover
- Polyurethane rubber leveling feet with stainless steel stems
- Load cell comes standard with DB-9 connector for connecting to Tracer AV2
- Three-sided kick plate

Specifications

Load Cell, NTEP Certified:

IP67 aluminum, environmentally sealed

Output Impedance:

350 ohm

Maximum Overload:

200%

Overload Protection:

Five-point, independently adjusted

Cable Length:

10 ft (3 m)

Compensated Temperature Range:

14 °F to 104 °F (-10 °C to 40 °C)

Warranty:

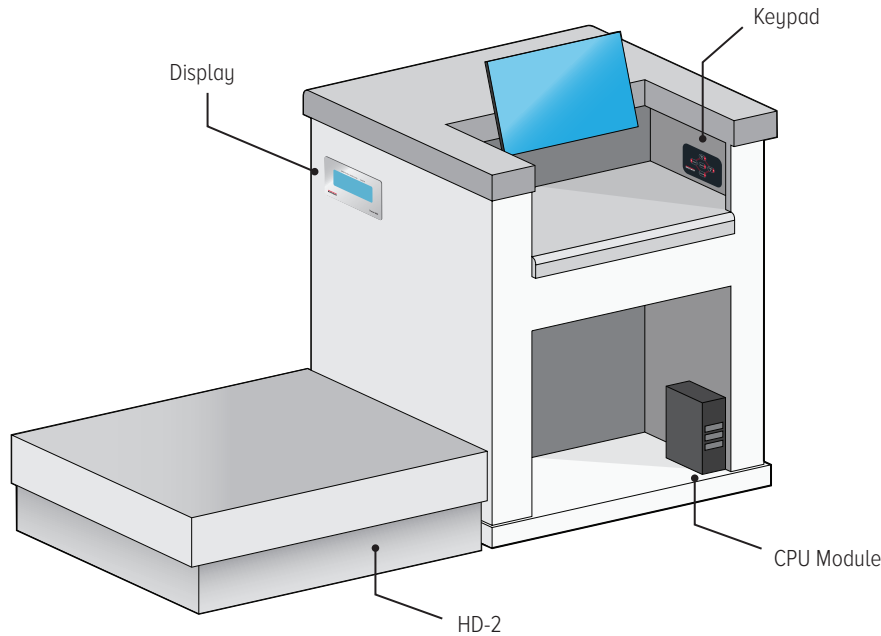
Two-year limited

Approvals:

NTEP CC 06-010, Class III 5,000 d

Measurement Canada AM-5625

Load cell is cFMus approved

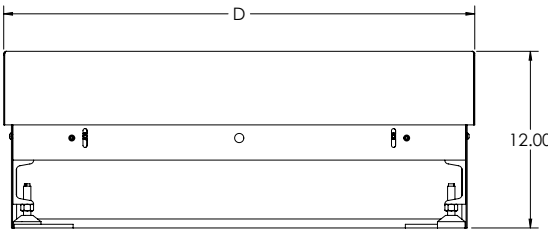
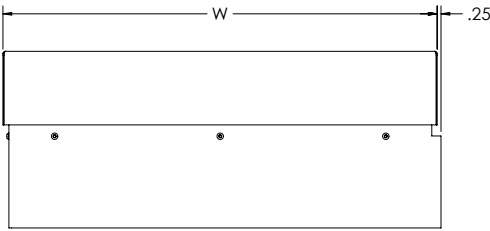
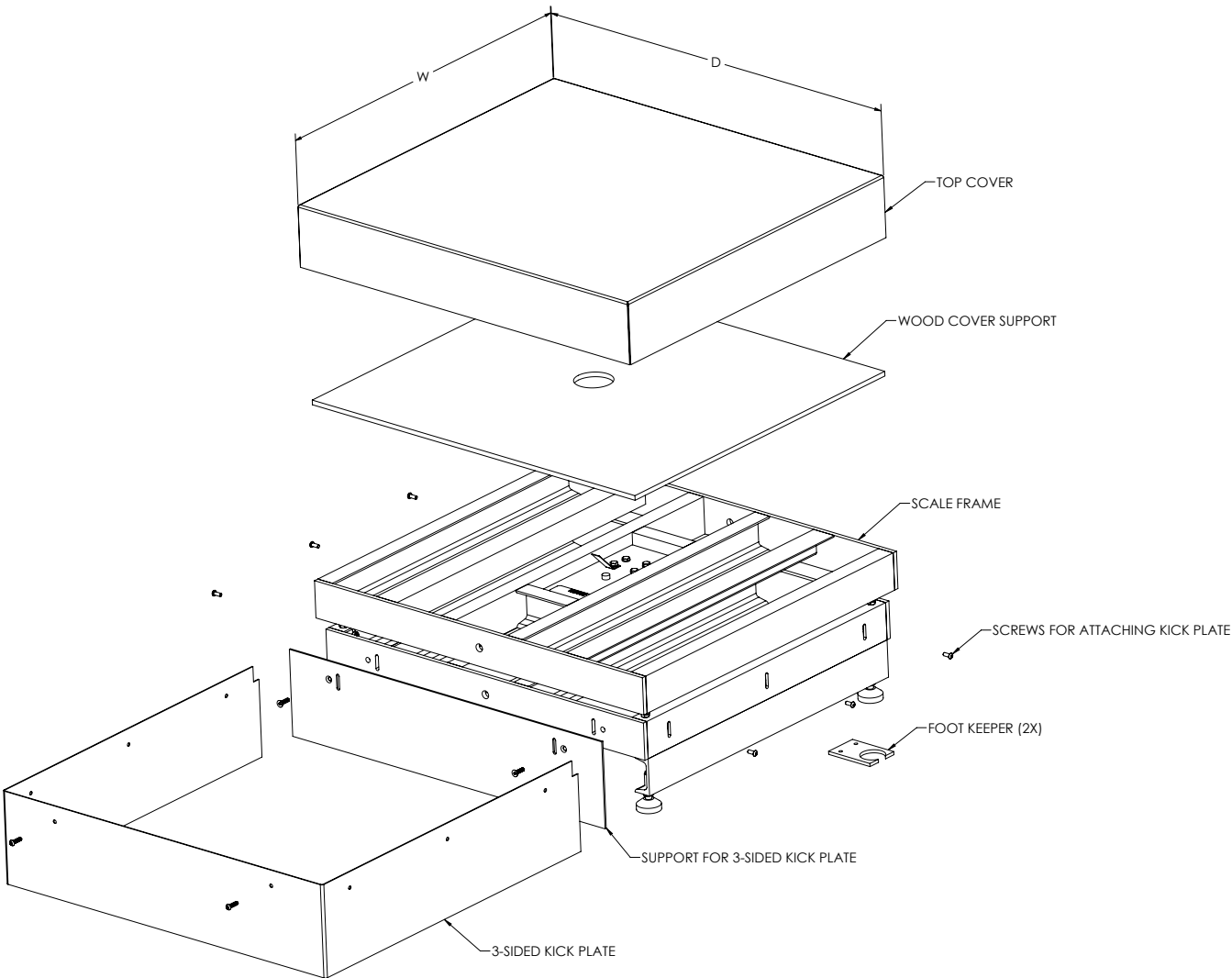


Baggage weighing system with Benchmark HD-2 and Tracer AV2 Single LCD Panel Mount Display, Single keypad

BenchMark® HD-2 Aviation

Heavy Duty Bench Scale

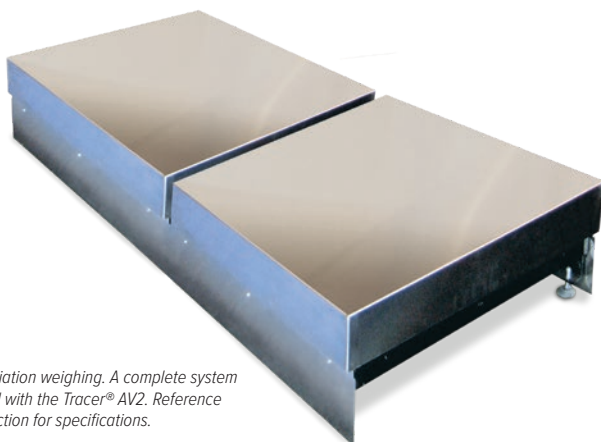
BENCH SCALES




BenchMark® HD-3 Aviation

Heavy Duty Bench Scale

BENCH SCALES



 Ideal for aviation weighing. A complete system can be sold with the Tracer® AV2. Reference Aviation section for specifications.

Approvals



Part Number/Price

| Part # | Capacity | Platform Dimensions | Price |
|---------|-----------------|---------------------|---------|
| Consult | 500 lb (225 kg) | W × D × 12 in | Consult |

Note: Maximum size is up to 36in × 36in, height is always 12in

W × D supplied by customer.

Standard Features

- Two heavy-duty scales designed mild steel base construction with 304 stainless steel cover
- Polyurethane rubber leveling feet with stainless steel stems
- Load cell comes standard with DB-9 connector for connecting to Tracer AV2
- Front and back kick plates for two side-by-side scales

Specifications

Load Cell, NTEP Certified:

IP67 aluminum, environmentally sealed

Output Impedance:

350 ohm

Maximum Overload:

200%

Overload Protection:

Five-point, independently adjusted

Cable Length:

10 ft (3 m)

Compensated Temperature Range:

14 °F to 104 °F (-10 °C to 40 °C)

Warranty:

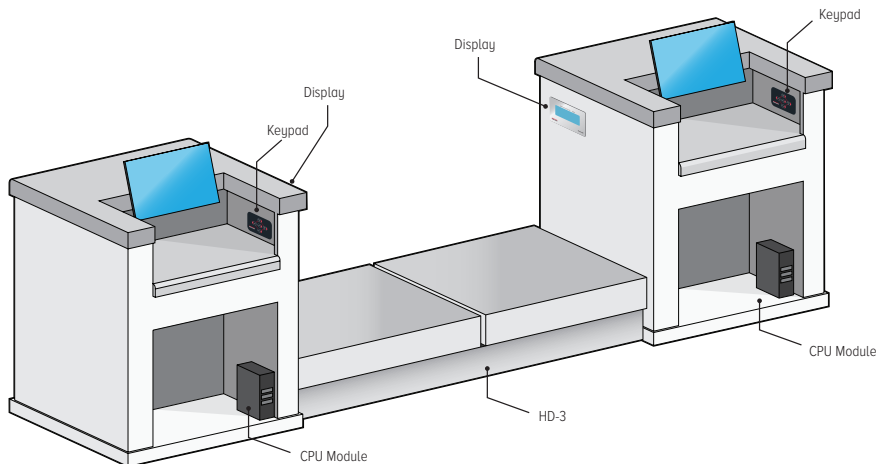
Two-year limited

Approvals:

NTEP CC 06-010, Class III 5,000 d

Measurement Canada AM-5625

Load cell is cFMus approved

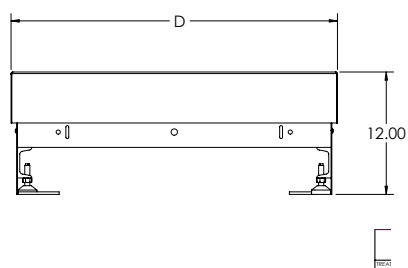
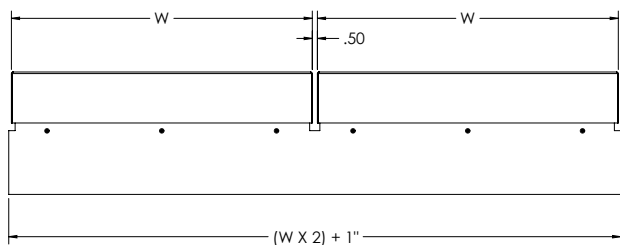
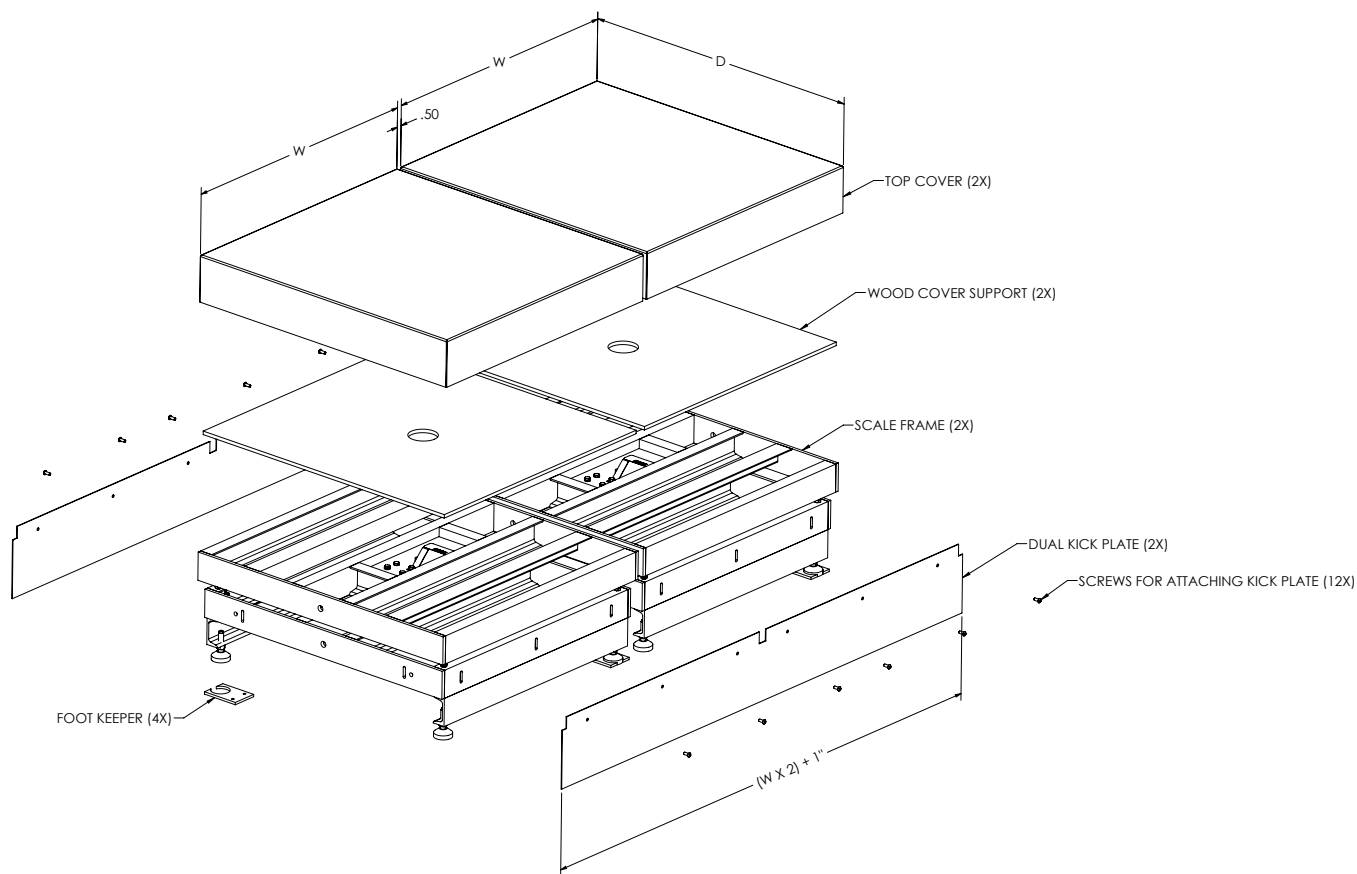


Baggage weighing system with Benchmark HD-3 and Tracer AV2 Single LCD Panel Mount Display, Single keypad

BenchMark® HD-3 Aviation

Heavy Duty Bench Scale

BENCH SCALES



BenchMark® HDP

Portable Heavy Duty Bench Scale

BENCH SCALES



Standard Features

- Mild steel base construction
- 304 stainless steel cover
- Indicator stand for mounting 480/482 Legend® Series or 380 Synergy

Wheel model

- Polyurethane rubber leveling feet with stainless steel stems
- 8-inch diameter preformed rubber wheels with ball bearings

Caster model

- 3 1/2 in diameter preformed rubber casters, two fixed, two swivel with lock

Specifications

Load Cell, NTEP Certified:

IP67 aluminum, environmentally sealed

Output Impedance:

350 ohm

Maximum Overload:

200%

Overload Protection:

Five-point, independently adjusted

Scale Frame:

Mild steel powder-coated black

Scale Cover:

AISI304L, straight line finish, Ra=45 +/- 10

Cable Length:

10 ft (3 m)

Compensated Temperature Range:

14 °F to 104 °F (-10 °C to 40 °C)

Warranty:

Two-year limited

Approvals:

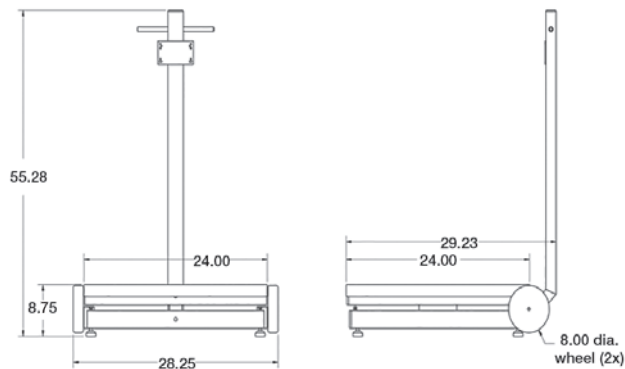
NTEP CC 06-010, Class III 5,000 d
Measurement Canada AM-5625

Approvals

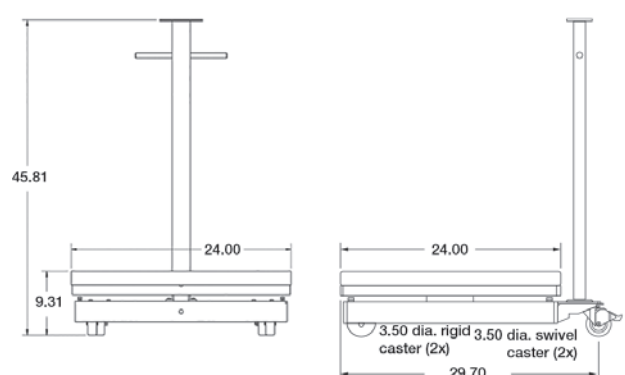


Part Number/Price

| Part # | Capacity | Platform Dimensions | Est. Weight | Price |
|---------------------|-----------------|---------------------|-------------|------------|
| Wheel Model | | | | |
| 97072 | 250 lb (125 kg) | 24 × 24 × 8.75 in | 275 lb | \$2,495.00 |
| 97073 | 500 lb (225 kg) | 24 × 24 × 8.75 in | 275 lb | \$2,495.00 |
| Caster Model | | | | |
| 97074 | 250 lb (125 kg) | 24 × 24 × 9.31 in | 290 lb | \$2,495.00 |
| 97075 | 500 lb (225 kg) | 24 × 24 × 9.31 in | 290 lb | \$2,495.00 |



Wheel Model



Caster Model

Ishida iPC Series

Portable Bench Scale

BENCH SCALES



Approvals



Part Number/Price

| Part # | Capacity | Platform Dimensions | Est. Weight | Price |
|--------------------------------------|---------------|---------------------|-------------|----------|
| Single Display | | | | |
| 75466 | 100 oz | 9.1 × 7.8 in | 6 lb | \$295.00 |
| Single Display, Multi-ranging | | | | |
| 75454 | 6 lb (3 kg) | 9.1 × 7.8 in | 6 lb | \$295.00 |
| 75455 | 15 lb (6 kg) | 9.1 × 7.8 in | 6 lb | \$295.00 |
| 75457 | 30 lb (15 kg) | 11 × 11.5 in | 8 lb | \$295.00 |
| 75458 | 60 lb (30 kg) | 11 × 11.5 in | 8 lb | \$295.00 |

Options/Accessories

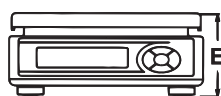
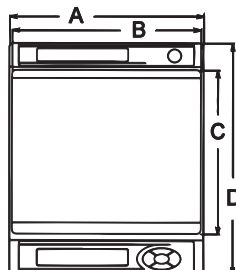
| Part # | Description | Price |
|----------------|--|---------|
| 75470 | Stainless steel platter cover (100 oz, 6 lb, and 15 lb capacity) | \$29.00 |
| 75739 | Stainless steel platter cover (30 lb and 60 lb capacity) | \$29.00 |
| 75473 * | AC adapter | \$30.00 |

*National Recognized Test Laboratory certified adapter

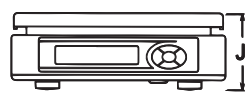
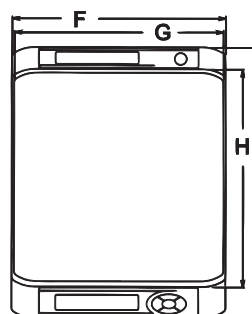
Dimensions

| Ishida iPC Series | | | |
|-------------------|----------|---|----------|
| A | 9.30 in | F | 11.30 in |
| B | 9.10 in | G | 11.00 in |
| C | 7.80 in | H | 11.50 in |
| D | 11.10 in | I | 14.30 in |
| E | 3.90 in | J | 4.00 in |

Note: 1 in = 25.4 mm



iPC 9.1" x 7.8" platter



iPC 11" x 11.5" platter

Standard Features

- Six-digit liquid crystal display (LCD)
- Powered by two D cell batteries (up to 500 hours of operation)
- Auto power-off function
- Low battery indicator
- Overload stops
- Batteries and AC adapter not included

Specifications

Display:

Six-digit (seven-segment), LCD
Character height: 1 in (25.4 mm)

Keyboard:

Zero, tare, on/off, unit (lb/kg)
NOTE: oz version only displays weight in oz

Power:

Two dry cell D type batteries* (up to 500 hours)
or AC adapter
Auto power-off function (can be set to 60 min., 20 min., or off)

Operational Temperature:

23 °F to 104 °F (-5 °C to 40 °C)

Divisions (Auto Ranging):

100 oz
0.05 oz: 0 to 50 oz
0.1 oz: 50 to 100 oz

6 lb
0.002 lb: 0 to 3 lb
0.005 lb: 3 to 6 lb

15 lb
0.005 lb: 0 to 6 lb
0.01 lb: 6 to 15 lb

30 lb
0.01 lb: 0 to 15 lb
0.02 lb: 15 to 30 lb

60 lb
0.02 lb: 0 to 30 lb
0.05 lb: 30 to 60 lb

Platter Size:

100 oz (3 kg): 9.1 × 7.8 in
6 lb (3 kg): 9.1 × 7.8 in
15 lb (6 kg): 9.1 × 7.8 in
30 lb (15 kg): 11 × 11.5 in
60 lb (30 kg): 11 × 11.5 in

Warranty:

One-year limited

Approvals:

NTEP Certified CC 02-139, Class III
0 to 30 lb 1,500 d; 60 lb 1,200 d; 0 to 100 oz 1000 d
UL listed

Versa-portion®

Compact Scale

BENCH SCALES



Approvals



Part Number/Price

| Part # | Description | Capacity | Est. Weight | Price |
|--------|-------------|------------------|----------------|----------|
| 115125 | RLP-6S | 6.00 × 0.002 lb | 15 lb (6.3 kg) | \$450.00 |
| 115128 | RLP-15S | 15.00 × 0.005 lb | 15 lb (6.3 kg) | \$450.00 |
| 115129 | RLP-30S | 30.00 × 0.01 lb | 15 lb (6.3 kg) | \$450.00 |
| 115130 | RLP-60S | 60.00 × 0.02 lb | 15 lb (6.3 kg) | \$450.00 |

Options/Accessories

| Part # | Description | Price |
|--------|------------------------------------|---------|
| 108516 | Rechargeable battery | \$50.00 |
| 108518 | AC adapter 110-230 VAC, U.S. plug | \$50.00 |
| 129953 | AC adapter, 110-230 VAC, Euro plug | \$55.00 |
| 115519 | Additional operator guide | \$10.00 |

Standard Features

- Compact and easy to use
- IP68 water and dust resistant
- Stainless steel finish
- Removable weigh pan for quick and easy cleaning
- LED display
- AC adapter included
- Legal for Trade
- HACCP compliant
- **Options**
- Rechargeable battery

Specifications

Display:

LED, six-digit

Capacity:

| Pound | Gram | Ounce |
|-----------------|---------------|-----------------|
| 6.0 × 0.002 lb | 3,000 × 1 g | 60.0 × 0.02 oz |
| 15.0 × 0.005 lb | 6,000 × 2 g | 150.0 × 0.05 oz |
| 30.0 × 0.01 lb | 15,000 × 5 g | 300.0 × 0.1 oz |
| 60.0 × 0.02 lb | 30,000 × 10 g | 600.0 × 0.2 oz |

Display Indicators:

Ounces, grams, pounds, net, center of zero, battery usage

Keyboard:

Rezero, Tare, On/Off, Unit

Resolution:

Internal: 90,000 count

Display: 3,000

Operating Humidity:

15 to 85% RH

Operating Temperature:

14 °F to 104 °F (-10 °C to 40 °C)

Power Consumption:

18 W when using DC power, 3 W when using rechargeable battery
Battery life: 60 hours of continuous usage

Power Source:

AC 117/100 V, 240/230/220 V
DC 12 V/1.5A, DC 6 V 5Ah optional rechargeable battery

Calibration:

RLP-S: Grams

Overall Dimensions:

(L × W × H)
11.4 × 9.9 × 5.3 in
(290 × 252 × 135 mm)

Package Size:

(L × W × H)
14.8 × 13.3 × 9.6 in
(377 × 337 × 245 mm)

Platter Size:

9.3 × 7.8 in
(237 × 198.0 mm)

Approximate Weight:

15 lb (6.3 kg)

Warranty:

One-year limited

Approvals:

NTEP CC 10-068, Class III 3,000 d
Measurement Canada AM-5794



Approvals



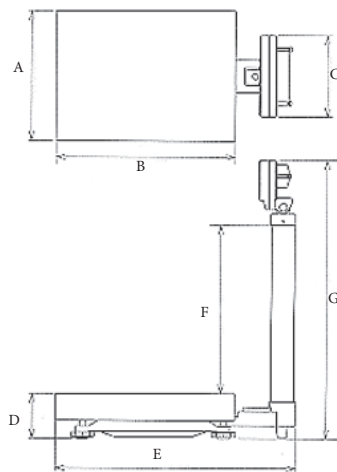
Part Number/Price

| Part # | Capacity | Platform Dimensions | Est. Weight | Price |
|--------------|------------------------------------|-------------------------|-------------|----------|
| IGX | | | | |
| 84989 | 150 lb (60 kg) × 0.05 lb (0.02 kg) | 15.75 × 21.65 × 5.43 in | 43 lb | \$995.00 |
| 84990 | 300 lb (150 kg) × 0.1 lb (0.05 kg) | 15.75 × 21.65 × 5.43 in | 43 lb | \$995.00 |

Dimensions

| Ishida IGX Series | | | |
|-------------------|----------|---|----------|
| A | 15.75 in | E | 29.06 in |
| B | 21.65 in | F | 22.00 in |
| C | 9.84 in | G | 33.70 in |
| D | 5.43 in | | |

Note: 1 in = 25.4 mm



Standard Features

- Ability to toggle between lb and kg
- Stainless steel cover with die-cast base
- Checkweighing function
- Configurable display resolution: 1/3,000, 1/6,000, 1/7,500 (NOTE: Legal for Trade setting is 1/3,000)
- 10 PLUs for storing tare, upper limit, lower limit
- Display: VFD
- Power: 120 VAC
- Internal buzzer

Specifications

Capacity:

150 lb/60 kg × 0.05 lb/0.02 kg
300 lb/150 kg × 0.1 lb/0.05 kg

Accuracy:

Configurable 1/3,000**, 1/6,000, 1/7,500
**Legal for Trade setting

Display:

Vacuum fluorescent display (VFD), 25 mm

Display Items:

Weight: five digits, center of zero, tare, checkweighing: over "H," under "L"

Electrical Power:

120 V

Operating Temperature:

23 °F to 109 °F (-5 °C to 40 °C)

Warranty:

One-year limited

Approvals:

NTEP CC 05-020, Class III, 3,000 d

BenchPro™ BP-P

Postal Bench Scale

BENCH SCALES



Standard Features

- Simple operation, easy to set up
- Large six-digit backlight LCD display with 1-inch (29 mm) characters protected by heavy-duty tempered glass
- Powered USB HID point of sale interface – kg model only
- Nine-pin RS-232 interface for use with SMA and NCI protocols
- Four AA alkaline battery operation for portability
- Gravitational compensation allows for adjustment of factory calibration to meet your local gravity setting, non-approved

Specifications

Power:

In-line power supply (included)
Input: 100 to 240 VAC, +10% -15%, 3-wire w/ground
Terminated with standard USA 3-prong plug
Output: 12 V at 0.1 Amps DC minimum
Frequency: 50/60 Hz +/-3 Hz, standard
Power supply approvals: UL, CE, EN, CUL

Battery Type:

Four AA alkaline batteries, 6 V,
with low battery indication at 4.3 volts

Battery Life:

50 to 250 hrs depending on backlight and auto-shutdown settings

Resolution:

Internal: 500,000 counts

USB HID:

USB 2.0 full speed; Vendor ID: 1C19;
Product ID: 0002

Divisions (multi-range):

kg triple range:

0 to 5 kg x 0.001 kg
0 to 10 kg x 0.002 kg
0 to 35 kg x 0.01 kg

lb/oz dual range:

0 to 7 lb x 0.05 oz
0 to 70 lb x 0.2 oz

Divisions (Multi-Interval):

Kg triple interval:

0 to 5 kg x 0.001 kg
5 to 10 kg x 0.002 kg
10 to 35 kg x 0.01 kg

Lb/oz dual interval:

0 to 7 lb x 0.05 oz
7 to 70 lb x 0.2 oz

Material:

Display: ABS plastic housing
Scale base:
Die-cast aluminum load bridge and base housing
with stainless steel weight platter

Dynamic Response:

Response time for stable weight:
0 to 1,000d, 1,000 ms, maximum mean average
1,000d +, 1,500 ms, maximum mean average

Overload Protection:

Corner & center overload protection

Display:

Large six-digit backlight LCD display with 1-inch (29 mm) Characters protected by heavy-duty tempered glass

Annunciators:

Six: Zero, gross/brutto, net, W1/W2/W3 multi-range

Keys/Buttons:

Three: Units, on/off, F1
(Tare is not applicable)
Minimum key press life of 500,000 cycles

RS-232 Cable (Included):

10 ft DB 9-pin male to female, straight pass-through

USB Cable (Included):

46 in (1,168 mm) A/B type USB cable

Warranty:

Two-year limited

Approvals:

NTEP CC 17-002
Canada Weights and Measures: AM - 6050
CE Marked

Approvals



Part Number/Price

| Part # | Platform Capacity | Dimensions | Est. Weight | Price |
|--------|-----------------------|------------|-------------|----------|
| 187832 | 35 kg triple range | 12 x 14 in | 18 lb | \$625.00 |
| 195741 | 35 kg triple interval | 12 x 14 in | 18 lb | \$625.00 |
| 192361 | 70 lb dual range | 12 x 14 in | 18 lb | \$625.00 |
| 195742 | 70 lb dual interval | 12 x 14 in | 18 lb | \$625.00 |

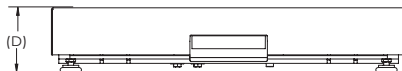
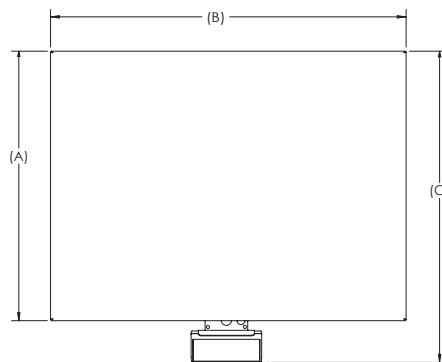
Options/Accessories

| Part # | Description | Est. Weight | Price |
|--------|--|-------------|----------|
| 174783 | Column bracket and post (12 x 14 scale only) | 2 lb | \$50.00 |
| 180901 | Second customer display, BenchPro BP-P no keyboard with 68 in cable | 4 lb | \$72.00 |
| 174784 | Second remote operator display, BenchPro BP-P with 68 in cable | 4 lb | \$88.00 |
| 183103 | 16 in (H) tabletop display post for use with second display, customer or remote operator | 4 lb | \$215.00 |
| 178501 | USB RS-232 serial adapter 3.28 ft cable | 1 lb | \$60.00 |

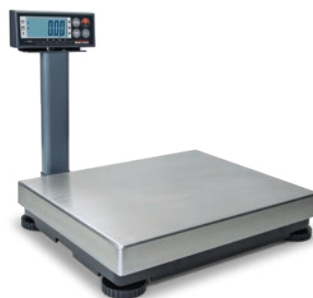
Dimensions

| BenchPro BP-P | | | |
|---------------|----------|---|----------|
| A | 12.00 in | C | 14.50 in |
| B | 14.00 in | D | 2.70 in |

Note: 1 in = 25.4 mm



BP-P shown with 183103 and 180901



Shown with 174783



Approvals



Part Number/Price

| Part # | Platform Capacity | Dimensions | Est. Weight | Price |
|----------|------------------------------|------------|-------------|------------|
| 174879 * | 150 × 0.05 lb (75 × 0.02 kg) | 12 × 14 in | 17 lb | \$625.00 |
| 182993 | 150 × 0.05 lb (75 × 0.02 kg) | 12 × 16 in | 31 lb | \$1,135.00 |
| 182391 | 100 × 0.02 lb (50 × 0.01 kg) | 18 × 18 in | 63 lb | \$1,490.00 |
| 182378 | 150 × 0.05 lb (75 × 0.02 kg) | 18 × 18 in | 63 lb | \$1,490.00 |
| 182382 | 300 × 0.1 lb (150 × 0.05 kg) | 18 × 18 in | 63 lb | \$1,490.00 |
| 182395 | 300 × 0.1 lb (150 × 0.05 kg) | 20 × 20 in | 76 lb | \$1,670.00 |
| 182399 | 300 × 0.1 lb (150 × 0.05 kg) | 24 × 24 in | 131 lb | \$1,840.00 |

* Battery or DC power

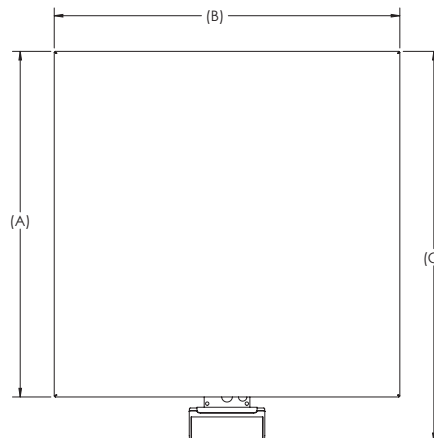
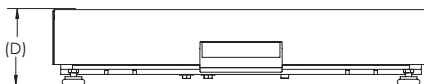
Options/Accessories

| Part # | Description | Est. Weight | Price |
|--------|--|-------------|----------|
| 174783 | Column bracket and post (12 × 14 scale only) | 2 lb | \$50.00 |
| 180901 | Second customer display, BenchPro BP-S no keyboard with 68 in cable | 4 lb | \$72.00 |
| 174784 | Second remote operator display, BenchPro BP-S with 68 in cable | 4 lb | \$88.00 |
| 183103 | 16 in (H) tabletop display post for use with second display, customer or remote operator | 4 lb | \$215.00 |
| 178501 | USB RS-232 serial adapter | 1 lb | \$60.00 |

Dimensions

| | A | B | C | D |
|------------|----------|----------|----------|---------|
| 12 × 14 in | 12.00 in | 14.00 in | 14.50 in | 2.70 in |
| 12 × 16 in | 12.00 in | 16.00 in | 15.30 in | 4.32 in |
| 18 × 18 in | 18.00 in | 18.00 in | 21.10 in | 4.30 in |
| 20 × 20 in | 20.00 in | 20.00 in | 23.10 in | 4.30 in |
| 24 × 24 in | 24.00 in | 24.00 in | 27.10 in | 4.30 in |

Note: 1 in = 25.4 mm



Standard Features

- Simple operation, easy to set up
- Large six-digit backlight LCD display with 1-inch (29 mm) characters protected by heavy-duty tempered glass
- Powered USB HID point of sale interface
- Nine-pin RS-232 interface for use with SMA and NCI protocols
- Four AA alkaline battery operation for portability
- Gravitational compensation allows for adjustment of factory calibration to meet your local gravity setting, non-approved
- Compatible with FedEx Ship Manager® and UPS Worldship®

Specifications

Power:

In-line power supply (included)
Input: 100 to 240 VAC, +10% -15%, 3-wire w/ground
Terminated with standard USA 3-prong plug
Output: 12 V at 0.1 Amps DC minimum
Frequency: 50/60 Hz +/-3 Hz, standard
Approvals: UL, CE, EN, CUL

Battery Power (12 × 14 in scale only):

Battery type: Four AA alkaline batteries,
6 V, with low battery indication at 4.3 volts

Battery Life:

50 to 250 hrs depending on backlight and auto-shutdown settings

Resolution:

Internal: 500,000 counts

USB HID:

USB 2.0 full speed; Vendor ID: 1C19;
Product ID: 0002

RS-232 Cable (Included):

10 ft DB 9-pin male to female, straight pass-through

USB Cable (Included):

46 in (1,168 mm) A/B type USB cable

Dynamic Response:

Response time for stable weight:
0 to 1,000d, 1,000 ms, maximum mean average
1,000d +, 1,500 ms, maximum mean average

Overload Protection:

Corner & center overload protection

Annunciators:

Six: zero, gross/brutto, net, W1/W2/W3 multi-range

Display:

Large six-digit backlight LCD display with 1-inch (29 mm) Characters protected by heavy-duty tempered glass

Keys/Buttons:

Four: Units, tare, on/off, F1
Minimum key press life of 500,000 cycles

Material:

Display: ABS plastic housing
Scale base: Powder coat painted mild steel
base plate and load bridge with stainless steel weight platter
BP-S 12 × 14 in: Die-cast aluminum load bridge and base housing with stainless steel weight platter

Warranty:

Two-year limited

Approvals:

NTEP CC 17-002
Canada Weights and Measures: AM-6050
CE Marked

BenchPro™ BP-SB

Shipping Bench Scale with Ball Top Shroud

BENCH SCALES



Approvals



Part Number/Price

| Part # | Capacity | Dimensions | Est. Weight | Price |
|--------|------------------------------|------------|-------------|------------|
| 182995 | 150 × 0.05 lb (75 × 0.02 kg) | 12 × 16 in | 37 lb | \$1,365.00 |
| 182393 | 100 × 0.02 lb (50 × 0.01 kg) | 18 × 18 in | 73 lb | \$1,835.00 |
| 182380 | 150 × 0.05 lb (75 × 0.02 kg) | 18 × 18 in | 73 lb | \$1,835.00 |
| 182384 | 300 × 0.1 lb (150 × 0.05 kg) | 18 × 18 in | 73 lb | \$1,835.00 |
| 182397 | 300 × 0.1 lb (150 × 0.05 kg) | 20 × 20 in | 88 lb | \$2,035.00 |
| 182401 | 300 × 0.1 lb (150 × 0.05 kg) | 24 × 24 in | 131 lb | \$2,240.00 |

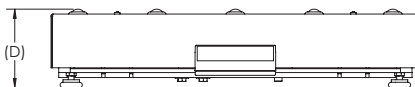
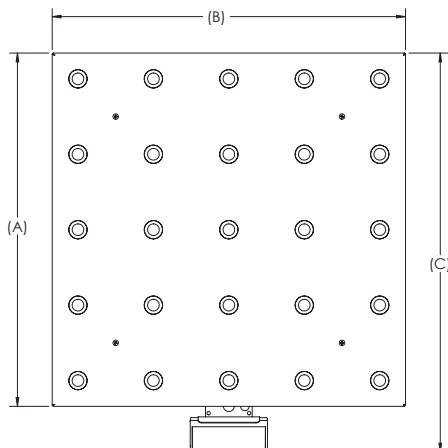
Options/Accessories

| Part # | Description | Est. Weight | Price |
|--------|--|-------------|----------|
| 180901 | Second customer display, BenchPro BP-SB no keyboard with 68 in cable | 4 lb | \$72.00 |
| 174784 | Second remote operator display, BenchPro BP-SB with 68 in cable | 4 lb | \$88.00 |
| 183103 | 16 in (H) tabletop display post for use with second display, customer or remote operator | 4 lb | \$215.00 |
| 178501 | USB RS-232 serial adapter | 1 lb | \$60.00 |

Dimensions

| | A | B | C | D |
|------------|----------|----------|----------|---------|
| 12 × 16 in | 12.00 in | 16.00 in | 15.30 in | 4.32 in |
| 18 × 18 in | 18.00 in | 18.00 in | 21.10 in | 4.86 in |
| 20 × 20 in | 20.00 in | 20.00 in | 23.10 in | 4.86 in |
| 24 × 24 in | 24.00 in | 24.00 in | 27.10 in | 4.86 in |

Note: 1 in = 25.4 mm



Standard Features

- Simple operation, easy to set up
- Large six-digit backlight LCD display with 1-inch (29 mm) characters protected by heavy-duty tempered glass
- Powered USB HID point of sale interface
- Nine-pin RS-232 interface for use with SMA and NCI protocols
- Four AA alkaline battery operation for portability
- Gravitational compensation allows for adjustment of factory calibration to meet your local gravity setting, non-approved
- Compatible with FedEx Ship Manager® and UPS Worldship®

Specifications

Power:

In-line power supply (included)
Input: 100 to 240 VAC, +10% -15%, 3-wire w/ground
Terminated with standard USA 3-prong plug
Output: 12 V at 0.1 Amps DC minimum
Frequency: 50/60 Hz +/-3 Hz, standard
Approvals: UL, CE, EN, CUL

Resolution:

Internal: 500,000 counts

USB HID:

USB 2.0 full speed; Vendor ID: 1C19;
Product ID: 0002

RS-232 Cable (Included):

10 ft DB 9-pin male to female, straight pass-through

USB Cable (Included):

46 in (1,168 mm) A/B type USB cable

Dynamic Response:

Response time for stable weight:
0 to 1,000d, 1,000 ms, maximum mean average
1,000d +, 1, 500 ms, maximum mean average

Overload Protection:

Corner & center overload protection

Annunciators:

Six: Zero, gross/brutto, net, W1/W2/W3 multi-range

Display:

Large six-digit backlight LCD display with 1-inch (29 mm) Characters protected by heavy-duty tempered glass

Keys/Buttons:

Four: Units, tare, on/off, F1
Minimum key press life of 500,000 cycles

Material:

Display: A BS plastic housing
Scale base: Powder coat painted mild steel base plate and load bridge.
Carbon steel ball with carbon steel zinc-plated housing. Stainless steel shroud.

Warranty:

Two-year limited

Approvals:

NTEP CC 17-002
Canada Weights and Measures: AM - 6050
CE Marked



Approvals



Part Number/Price

| Part # | Platform Capacity | Dimensions | Est. Weight | Price |
|--------|------------------------------|------------|-------------|------------|
| 182996 | 150 × 0.05 lb (75 × 0.02 kg) | 12 × 16 in | 41 lb | \$1,290.00 |
| 182394 | 100 × 0.02 lb (50 × 0.01 kg) | 18 × 18 in | 77 lb | \$1,650.00 |
| 182381 | 150 × 0.05 lb (75 × 0.02 kg) | 18 × 18 in | 77 lb | \$1,650.00 |
| 182386 | 300 × 0.1 lb (150 × 0.05 kg) | 18 × 18 in | 77 lb | \$1,650.00 |
| 182398 | 300 × 0.1 lb (150 × 0.05 kg) | 20 × 20 in | 94 lb | \$1,769.00 |
| 182402 | 300 × 0.1 lb (150 × 0.05 kg) | 24 × 24 in | 131 lb | \$1,939.00 |

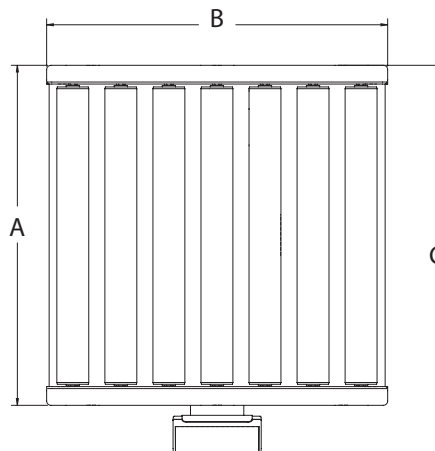
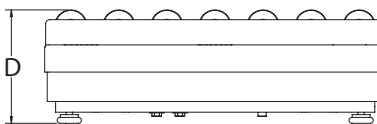
Options/Accessories

| Part # | Description | Est. Weight | Price |
|--------|--|-------------|----------|
| 180901 | Second customer display, BenchPro BP-SR no keyboard with 68 in cable | 4 lb | \$72.00 |
| 174784 | Second remote operator display, BenchPro BP-SR with 68 in cable | 4 lb | \$88.00 |
| 183103 | 16 in (H) tabletop display post for use with second display, customer or remote operator | 4 lb | \$215.00 |
| 178501 | USB RS-232 serial adapter | 1 lb | \$60.00 |

Dimensions

| | A | B | C | D |
|------------|----------|----------|----------|---------|
| 12 × 16 in | 12.00 in | 16.00 in | 15.30 in | 5.95 in |
| 18 × 18 in | 18.00 in | 18.00 in | 21.10 in | 6.50 in |
| 20 × 20 in | 20.00 in | 20.00 in | 23.10 in | 6.50 in |
| 24 × 24 in | 24.00 in | 24.00 in | 27.10 in | 6.50 in |

Note: 1 in = 25.4 mm



Standard Features

- Simple operation, easy to set up
- Large six-digit backlight LCD display with 1-inch (29-mm) characters protected by heavy-duty tempered glass
- Powered USB HID point of sale interface
- Nine-pin RS-232 interface for use with SMA and NCI protocols
- Four AA alkaline battery operation for portability
- Gravitational compensation allows for adjustment of factory calibration to meet your local gravity setting, non-approved
- Compatible with FedEx Ship Manager® and UPS Worldship®

Specifications

Power:

In-line power supply (included)
Input: 100 to 240 VAC, +10% -15%, 3-wire w/ground
Terminated with standard USA 3-prong plug
Output: 12 V at 0.1 Amps DC minimum
Frequency: 50/60 Hz +/-3 Hz, standard
Approvals: UL, CE, EN, CUL

Resolution:

Internal: 500,000 counts

USB HID:

USB 2.0 full speed; Vendor ID: 1C19;
Product ID: 0002

RS-232 Cable (Included):

10 ft DB 9-pin male to female, straight pass-through

USB Cable (Included):

46 in (1,168 mm) A/B type USB cable

Dynamic Response:

Response time for stable weight:
0 to 1,000d, 1,000 ms, maximum mean average
1,000d +, 1,500 ms, maximum mean average

Overload Protection:

Corner & center overload protection

Annunciators:

Six: zero, gross/brutto, net, W1/W2/W3 multi-range

Display:

Large six-digit backlight LCD display with 1-inch (29 mm) Characters protected by heavy-duty tempered glass

Keys/Buttons:

Four: Units, tare, on/off, F1
Minimum key press life of 500,000 cycles

Material:

Display: A BS plastic housing
Scale base: Powder coat painted mild steel
base plate and load bridge with stainless steel
roller conveyor

Warranty:

Two-year limited

Approvals:

NTEP CC 17-002
Canada Weights and Measures: AM - 6050
CE Marked

BenchMark® MSC-10

Mobile Scale Cart

BENCH SCALES



Standard Features

- Two swivel, locking casters and two rigid casters
- Adjustable height with telescoping tube designed legs
- 18-inch indicator stand for mounting CW-90/90X, 480/480 Plus, 482/482 Plus, 680 Synergy, 380 Synergy

Specifications

Capacity:
1,000 lb (500 kg) maximum

Warranty:
One-year limited

Part Number/Price

| Part # | Description | Cart Dimensions (L × W × H) | Est. Weight | Price |
|------------------------|---|---|-------------|------------|
| Mild Steel | | | | |
| 190201 | Designed for 12 × 18 in Benchmark MS scale | 25 × 14 × 41.89-51.89 in (22.78 to 32.78 in*) | 70 lb | \$1,275.00 |
| 190202 | Designed for 18 × 18 in Benchmark MS scale | 25 × 20 × 41.89-51.89 in (22.78 to 32.78 in*) | 83 lb | \$1,305.00 |
| 190203 | Designed for 18 × 24 in Benchmark MS scale | 31 × 20 × 41.89-51.89 in (22.78 to 32.78 in*) | 93 lb | \$1,335.00 |
| 190204 | Designed for 24 × 24 in Benchmark MS scale | 31 × 26 × 41.89-51.89 in (22.78 to 32.78 in*) | 101 lb | \$1,365.00 |
| Stainless Steel | | | | |
| 190205 | Designed for 12 × 18 in Benchmark SS and Benchmark HE scale | 25 × 14 × 41.89-51.89 in (22.78 to 32.78 in*) | 70 lb | \$1,595.00 |
| 190206 | Designed for 18 × 18 in Benchmark SS and Benchmark HE scale | 25 × 20 × 41.89-51.89 in (22.78 to 32.78 in*) | 83 lb | \$1,640.00 |
| 190207 | Designed for 18 × 24 in Benchmark SS and Benchmark HE scale | 31 × 20 × 41.89-51.89 in (22.78 to 32.78 in*) | 93 lb | \$1,685.00 |
| 190209 | Designed for 24 × 24 in Benchmark SS and Benchmark HE scale | 31 × 26 × 41.89-51.89 in (22.78 to 32.78 in*) | 101 lb | \$1,730.00 |

*Height of cart without indicator stand

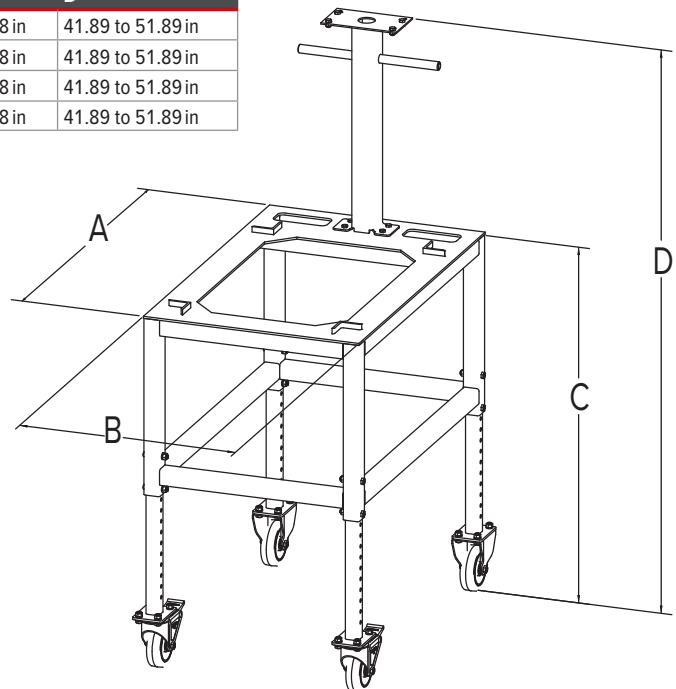
Wheels on standard carts are not conductive. If the end user plans to use the cart with an IS indicator, they will need a custom cart quoted with conductive wheels.

Cart not compatible with HE-X. See MSC-40.

Dimensions

| | A | B | C | D |
|-------------------------------|----------|----------|-------------------|-------------------|
| Designed for 12 × 18 in scale | 25.00 in | 14.00 in | 22.78 to 32.78 in | 41.89 to 51.89 in |
| Designed for 18 × 18 in scale | 25.00 in | 20.00 in | 22.78 to 32.78 in | 41.89 to 51.89 in |
| Designed for 18 × 24 in scale | 31.00 in | 20.00 in | 22.78 to 32.78 in | 41.89 to 51.89 in |
| Designed for 24 × 24 in scale | 31.00 in | 26.00 in | 22.78 to 32.78 in | 41.89 to 51.89 in |

Note: 1 in = 25.4 mm





Standard Features

- Two swivel, locking casters and two rigid casters
- Designed to easily transport counting scale and secondary scale

Specifications

Capacity:

Lower base frame: 1,000 lb (500 kg) maximum
Upper base frame: 50 lb (25 kg) maximum

Warranty:

One-year limited

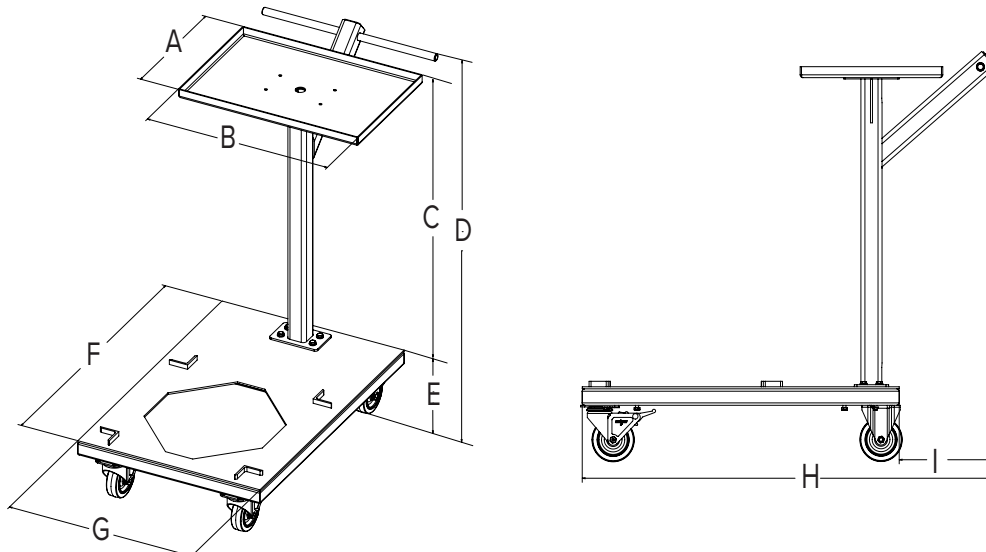
Part Number/Price

| Part # | Description | Est. Weight | Price |
|------------------------|---|-------------|------------|
| Mild Steel | | | |
| 197502 | Designed for 12 × 18 in Benchmark MS scale | 85 lb | \$1,360.00 |
| 197503 | Designed for 18 × 18 in Benchmark MS scale | 85 lb | \$1,380.00 |
| 197504 | Designed for 18 × 24 in Benchmark MS scale | 88 lb | \$1,405.00 |
| 197505 | Designed for 24 × 24 in Benchmark MS scale | 96 lb | \$1,425.00 |
| Stainless Steel | | | |
| 197506 | Designed for 12 × 18 in Benchmark SS and Benchmark HE scale | 90 lb | \$1,930.00 |
| 197507 | Designed for 18 × 18 in Benchmark SS and Benchmark HE scale | 90 lb | \$1,950.00 |
| 197508 | Designed for 18 × 24 in Benchmark SS and Benchmark HE scale | 93 lb | \$1,970.00 |
| 197509 | Designed for 24 × 24 in Benchmark SS and Benchmark HE scale | 101 lb | \$2,000.00 |

Dimensions

| | A | B | C | D | E | F | G | H | I |
|-------------------------------|----------|----------|----------|----------|---------|----------|----------|----------|---------|
| Designed for 12 × 18 in scale | 19.50 in | 13.25 in | 29.18 in | 36.00 in | 6.81 in | 30.00 in | 20.00 in | 39.00 in | 9.00 in |
| Designed for 18 × 18 in scale | 19.50 in | 13.25 in | 29.18 in | 36.00 in | 6.81 in | 30.00 in | 20.00 in | 39.00 in | 9.00 in |
| Designed for 18 × 24 in scale | 19.50 in | 13.25 in | 29.18 in | 36.00 in | 6.81 in | 35.00 in | 20.00 in | 44.00 in | 9.00 in |
| Designed for 24 × 24 in scale | 19.50 in | 13.25 in | 29.18 in | 36.00 in | 6.81 in | 35.00 in | 26.00 in | 44.00 in | 9.00 in |

Note: 1 in = 25.4 mm



BenchMark® MSC-30

Mobile Scale Cart

BENCH SCALES



Standard Features

- Two swivel, locking casters and two rigid casters
- Indicator stand for mounting CW-90/90X, 480/480Plus, 482/482Plus, 680 Synergy, 380 Synergy

Specifications

Capacity:
1,000 lb (500 kg) maximum

Warranty:
One-year limited

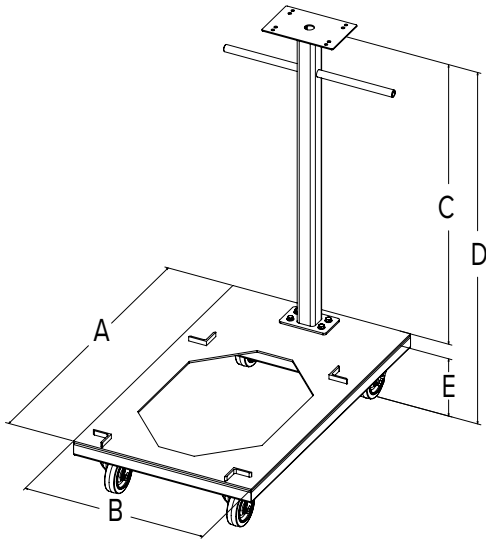
Part Number/Price

| Part # | Description | Est. Weight | Price |
|------------------------|--|-------------|------------|
| Mild Steel | | | |
| 197510 | Designed for 12 × 18 Benchmark MS scale | 67 lb | \$1,360.00 |
| 197511 | Designed for 18 × 18 Benchmark MS scale | 67 lb | \$1,380.00 |
| 197512 | Designed for 18 × 24 Benchmark MS scale | 70 lb | \$1,405.00 |
| 197513 | Designed for 24 × 24 Benchmark MS scale | 78 lb | \$1,425.00 |
| Stainless Steel | | | |
| 197514 | Designed for 12 × 18 Benchmark SS and Benchmark HE scale | 72 lb | \$1,930.00 |
| 197515 | Designed for 18 × 18 Benchmark SS and Benchmark HE scale | 72 lb | \$1,950.00 |
| 197516 | Designed for 18 × 24 Benchmark SS and Benchmark HE scale | 75 lb | \$1,970.00 |
| 197517 | Designed for 24 × 24 Benchmark SS and Benchmark HE scale | 83 lb | \$2,000.00 |

Dimensions

| | A | B | C | D | E |
|----------------------------|----------|----------|----------|----------|---------|
| Designed for 12 × 18 scale | 30.00 in | 20.00 in | 34.25 in | 41.00 in | 6.81 in |
| Designed for 18 × 18 scale | 30.00 in | 20.00 in | 34.25 in | 41.00 in | 6.81 in |
| Designed for 18 × 24 scale | 35.00 in | 20.00 in | 34.25 in | 41.00 in | 6.81 in |
| Designed for 24 × 24 scale | 35.00 in | 26.00 in | 34.25 in | 41.00 in | 6.81 in |

Note: 1 in = 25.4 mm



BenchMark® MSC-40

Mobile Scale Cart



Standard Features

- Two swivel, locking casters and two rigid casters
- Rugged washdown design meets Sanitary Design Principles

Specifications

Capacity:
1,000 lb (500 kg) maximum

Warranty:
One-year limited

BENCH SCALES

Part Number/Price

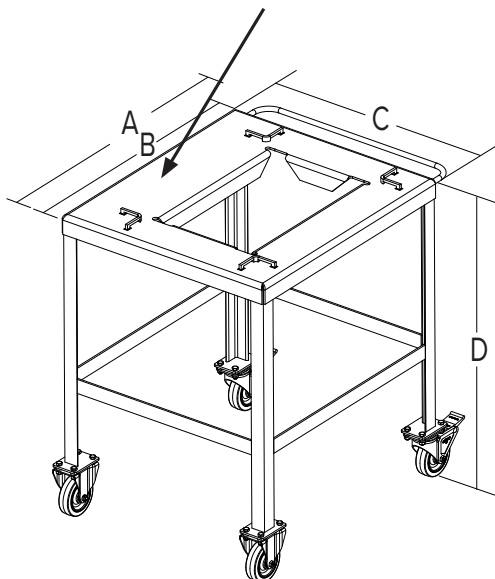
| Part # | Description | Est. Weight | Price |
|-----------------|--|-------------|------------|
| Stainless Steel | | | |
| 197518 | Designed for 12 × 18 in Benchmark HE-X scale | 62 lb | \$1,795.00 |
| 197519 | Designed for 18 × 18 in Benchmark HE-X scale | 62 lb | \$1,895.00 |
| 197520 | Designed for 18 × 24 in Benchmark HE-X scale | 69 lb | \$1,995.00 |
| 197521 | Designed for 24 × 24 in Benchmark HE-X scale | 79 lb | \$2,095.00 |

Dimensions

| | A | B | C | D |
|-------------------------------|----------|----------|----------|----------|
| Designed for 12 × 18 in scale | 24.75 in | 21.00 in | 17.88 in | 32.00 in |
| Designed for 18 × 18 in scale | 24.75 in | 21.00 in | 24.00 in | 32.00 in |
| Designed for 18 × 24 in scale | 30.75 in | 27.00 in | 24.00 in | 32.00 in |
| Designed for 24 × 24 in scale | 30.75 in | 27.00 in | 30.00 in | 32.00 in |

Note: 1 in = 25.4 mm

Note: This side of cart is larger to accommodate BenchMark HE-X with indicator column



Bench Scale Ball Transfer and Roller Conveyor

1. Rice Lake Weighing Systems model number or part number of bench scale _____
2. Dimensions of scale: _____ in L × _____ in W
3. Capacity of scale: _____ lb
4. Dimensions of the smallest box/container to be used with the scale: _____ in L × _____ in W

Ball Transfer

5. Construction of ball transfer
 - ☐ Steel ball, steel housing zinc finish
 - ☐ Stainless steel ball, steel housing zinc finish
 - ☐ Stainless steel ball, stainless steel housing
6. Center-to-center ball dimension, if known:



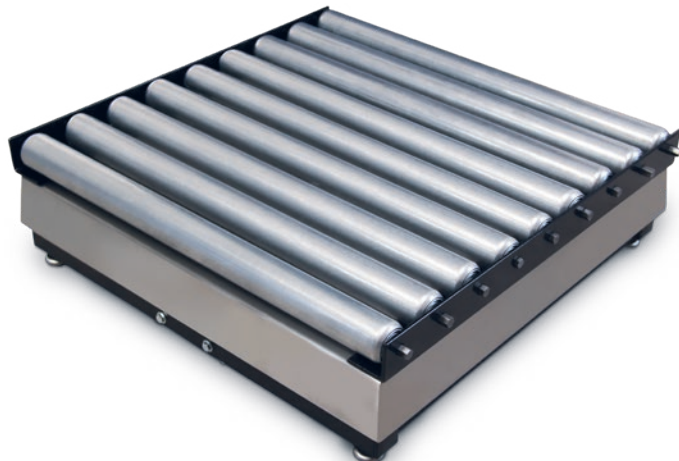
Ball Transfer with Shroud

5. Construction of ball transfer
 - ☐ Steel ball, steel housing zinc finish
 - ☐ Stainless steel ball, stainless steel housing
6. Center-to-center ball dimension, if known:



Roller Conveyor

8. Roller diameter, if known:
9. Center-to-center dimension, if known:
10. Construction of rollers
 - ☐ Plain steel
 - ☐ Galvanized steel
 - ☐ Aluminum
 - ☐ Stainless steel
7. Direction of roller conveyor, if platform is rectangular shaped (i.e., 18 × 24 in scale, please tell us if the rollers should be 18 in or 24 in long)



Bench Scale Columns

Part Number/Price

| Part # | Description | Price |
|---------------|---|----------|
| 112044 | 12 in column for IQ plus® 210, CW-90, CW-90X, 480/482 Legend Series, 380 Synergy Series, 680 Synergy Series | \$145.00 |
| 112045 | 18 in column for IQ plus® 210, CW-90, CW-90X, 480/482 Legend Series, 380 Synergy Series, 680 Synergy Series | \$195.00 |
| 196363 | 12 in column for 882IS/882IS Plus with battery | \$225.00 |
| 196364 | 18 in column for 882IS/882IS Plus with battery | \$275.00 |
| 197482 | 12 in column for 882IS/882IS Plus with power supply (Note: Power supply does not mount to column) | \$165.00 |
| 197484 | 18 in column for 882IS/882IS Plus with power supply (Note: Power supply does not mount to column) | \$215.00 |
| 64576 | Attachment bracket for IQ plus® 210, CW-90, CW-90X, 480/482 Legend Series, 380 Synergy Series, 680 Synergy Series | \$100.00 |
| 216970 | 12 in column for 381 Synergy Indicator | \$145.00 |
| 216971 | 18 in column for 381 Synergy Indicator | \$195.00 |

Available for the BenchMark SL, BenchMark SL/HE, BenchMark Mild Steel, BenchMark Stainless Steel, BenchMark HE, BenchMark HE-X, CW-80B, CW-90B and CW90-XB



CW-90B with 480 indicator and 12in column



Base with 882IS/882IS Plus indicator with battery and 12in column



Attachment bracket with IQ Plus 2100



Base with 381 Synergy indicator and 12in column

