

Remote Displays / Scoreboards

TABLE OF CONTENTS

Remote Displays / Scoreboards 893

LaserLight2™ 894
Remote Display

LaserLight3™ 896
Color Remote Display with Messaging

LaserLT-60 and LaserLT-100 898
Remote Display or Weight Indicators

RD-232 900
Remote Display

RD-300 901
Remote Display

Product names, logos, brands and other trademarks featured
or referred to within this publication are the property of their respective trademark holders.

LaserLight2™

Remote Display



Dimensions

LaserLight2			
22-in Enclosure (Four-in Model)			
A	22.28 in (565 mm)	D	9.80 in (250 mm)
B	10.96 in (280 mm)	E	23.00 in (584 mm)
C	3.28 in (85 mm)	F	6.00 in (152 mm) 3/8 in bolt
31-in Enclosure (Six-in and Stop & Go Models)			
A	30.63 in (780 mm)	D	12.77 in (325 mm)
B	13.94 in (355 mm)	E	31.00 in (787 mm)
C	3.73 in (95 mm)	F	7.75 in (197 mm) 3/8 in bolt

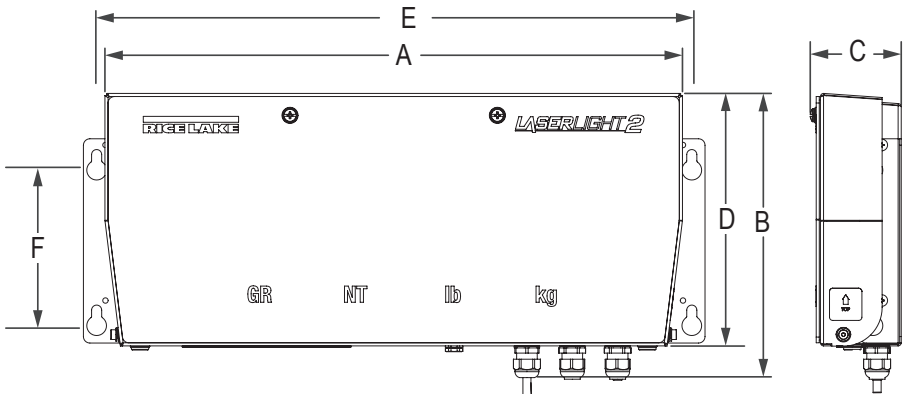
(Flanges add 2.00 in width)

Standard Features

- Available with a 4 in (100 mm) or 6 in (150 mm) digit display
- Six high-intensity red digits (double-row discrete LED)
- Time and date displayed when scale is empty
- Auto Learn mode of communication protocols
- Hold displayed weight (demand input)
- Software selectable standstill mode for no updates while in motion
- Setting for 10 levels, daylight/night intensity
- Non-glare contrast filtered lens
- Mirror (reverse image) function
- Wall mounted with side flanges or with VESA mount
- Gore-Tex® breather vent inhibits internal moisture buildup
- Red, green and arrow lights in stop/go version, set with either digital input or serial command

Specifications

- Display:**
6-digit, 7-segment discrete red LED lamps
Contrast enhanced optical filtering lens
1 or 2 place decimal or comma indication
4 annunciators for GR, NT, lb, kg
4-inch red, green ball/arrow in stop/go model
- Maximum Viewing Distance:**
4 in: 100 ft (30 m)
6 in: 150 ft (46 m)
- Input Interface:**
RS-232, RS-485, 20 mA current loop (active or passive, switch selectable)
- Output Interface:**
Configurable echo out port or RS-232
- Input Data Format:**
Baud Rate: 1200, 2400, 4800, 9600 and 19200
Self-learning or software selectable
- Character Format:**
7 or 8 data bits; even, odd, or no parity;
1 or 2 stop bits, self-learning or software selectable
- Update:**
Continuous or out-of-motion only;
software selectable
- Power Consumption:**
AC voltages: 100/240 VAC; 50/60 Hz
4 in: 21 watt
6 in: 27 watt
- Time:**
12- or 24-hour format
- Date:**
US or ISO format
- Rating/Material:**
IP66 weathertight, mild steel, powder coated
- Weight:**
4-inch: 20 lb (9 kg)
6-inch: 25 lb (11 kg)
- Temperature:**
Operating:
-40 °F to 120 °F (-40 °C to 49 °C)
- Warranty:**
Two-year limited

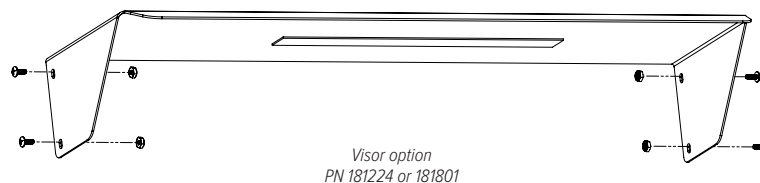
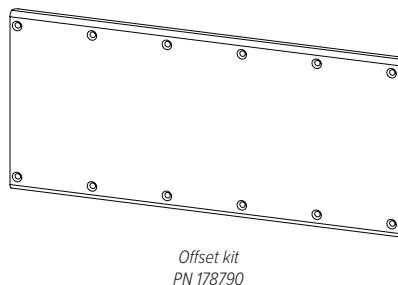
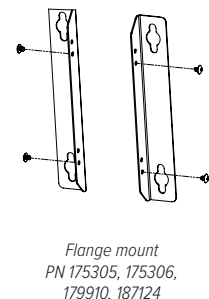
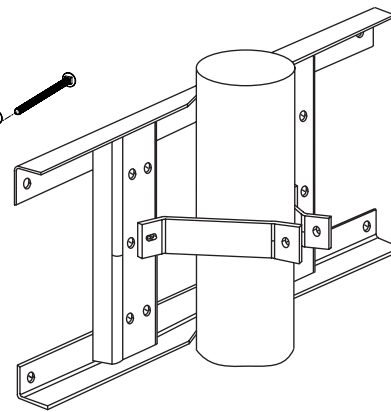
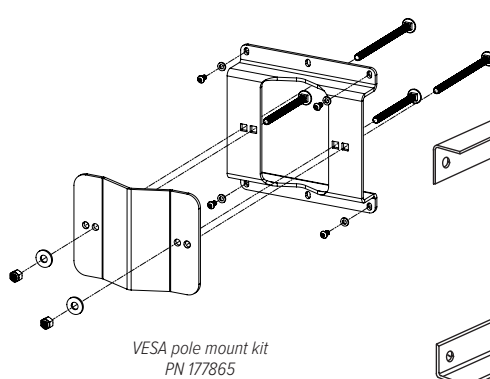
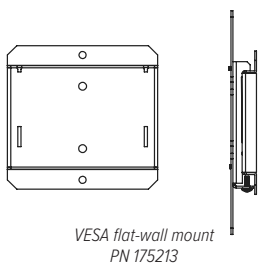


Part Number/Price

Part #	Description	Est. Weight	Price
Includes Flange Mount Hardware			
167091	LaserLight2 remote display 4-in (100 mm) includes PN 175305	20 lb	\$2,015.00
167092	LaserLight2 remote display 6-in (150 mm) includes PN 175306	25 lb	\$2,550.00
167093	LaserLight2 remote display stop/go 4-in (100 mm) includes PN 175306	25 lb	\$2,550.00
175286	LaserLight2 remote display 4-in (100 mm) stainless steel includes PN 179910	20 lb	\$2,400.00
187120	LaserLight2 remote display stop/go 4-in (100 mm) stainless steel includes PN 187124	25 lb	\$2,975.00
Includes VESA Mount Hardware			
175860	LaserLight2 remote display 4-in (100 mm) includes PN 175213	20 lb	\$2,040.00
175861	LaserLight2 remote display 6-in (150 mm) includes PN 175213	25 lb	\$2,575.00
175862	LaserLight2 remote display stop/go 4-in (100 mm) includes PN 175213	25 lb	\$2,575.00

Options/Accessories

Part #	Description	Price
175052	Wireless interface, pair of ConnexLink Radios and mount	\$835.00
214644	Wireless interface, single ConnexLink radio client kit	\$495.00
175213	Mount bracket, VESA flat-wall option (included with VESA mounted remote)	\$95.00
175305	Mount bracket, 4-in flange option (included with flange mounted remote)	\$29.00
175306	Mount bracket, 6-in flange option (included with flange mounted remote)	\$29.00
179910	Mount bracket, 4-in stainless steel flange option (included with flange mounted stainless steel remote)	\$32.00
187124	Mount bracket, 6-in stainless steel flange option (included with flange mounted stainless steel remote)	\$42.00
75856	Pole mount kit, 4-in flange option (24-in wide frame for 4-8 in dia. pole)	\$280.00
77775	Pole mount kit, 6-in and 4-in stop/go flange option (32-in wide frame for 4-8 in dia. pole)	\$280.00
177865	Pole mount kit, VESA flat-wall option mount for 2-6 inch pole	\$90.00
178790	Offset kit (right or left flange mount) used with universal pole mount (requires PN 177865)	\$82.00
181224	Visor for 22 in enclosure (not required for weather protection)	\$190.00
181801	Visor for 31 in enclosure (not required for weather protection)	\$205.00



REMOTE DISPLAYS /
SCOREBOARD



Standard Features

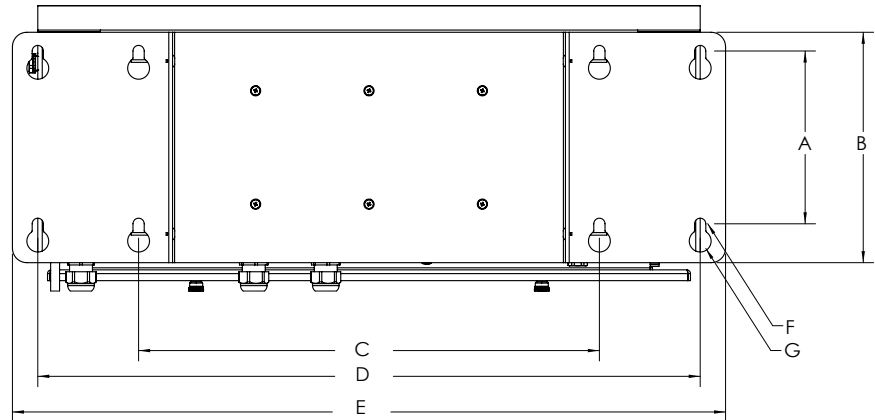
- LED color display with non-glare lens; high-intensity digits up to 5 in tall
- Color commands change background and foreground text
- Auto Learn identifies and interprets the source weight data string for maximum compatibility with a wide range of indicators
- Versatile layout choices include mirror mode, one-line, two-line and quadrant format
- Dynamic messaging views can scroll, slide or flash
- Display stop/go light symbols/arrows with digits up to 4 in tall
- Selectable time/date when weight is at zero
- Integrated weathertight keypad for sending configurable scale commands to the indicator
- Durable IP66 enclosure with Gore-Tex® breather vent to inhibit internal moisture
- RS-232, RS-422, 20 mA and Ethernet TCP/IP
- Mounting options include VESA, flange and pole configurations

Options

- Wireless LAN, Wi-Fi interface 802.11 a/b/g/n
- Wireless interface, pair of ConnexLink radios and mount
- Pole mount kit for 4- to 8-in pole
- VESA kit for 2 to 6-in pole
- Sunshade visor, 8-in painted steel

Dimensions

LaserLight3			
A	6.00 in (152 mm)	E	25.00 in (6.35 mm)
B	8.00 in (203 mm)	F	0.39 in (10 mm)
C	16.00 in (406 mm)	G	0.76 in (19 mm)
D	23.00 in (584 mm)		



Specifications

- Power Consumption:**
AC voltages: 100 to 240 VAC; 50/60 Hz
120 watt (120 VAC)
95 watt (12 VDC)
- Output Interface:**
Ethernet TCP/IP, independently configurable
echo port
- Input Data Format:**
Baud Rate: 1200, 2400, 4800, 9600, 19200, 38400,
57600 and 115200 self-learning or configurable
- Update:**
Continuous or out-of-motion modes
Message interrupt mode
- Digital I/O:**
Four I/O read or set
5 V logic
- Communication Ports:**
Ethernet TCP/IP, RS-232, RS-485,
20 mA current loop
- Character Format:**
7 or 8 data bits; even, odd, or no parity;
1 or 2 stop bits
- Maximum Viewing Distance:**
4-inch character: 100 ft (30 m)
5-inch character: 150 ft (46 m)
- Viewing Angle:**
160°
- Display:**
Bright, outdoor color LED lamps
128 × 32-pixel, 4 mm pitch
Decimal or comma indication
Weight display with units and mode
Message display 1, 2 or 4 lines
Stop/go and directional arrow
- Keys/Buttons:**
Integrated keypad
- Time:**
12- or 24-hour format
- Date:**
US or ISO format
- Temperature:**
Operating: -40 °F to 120 °F (-40 °C to 49 °C)
- Rating/Material:**
IP66 weathertight
Mild steel, powder-coated
- Weight:**
Without wall mount: 14.19 lb (7.81 kg)
With wall mount: 20.48 lb (10.66 kg)
With sunshade and wall mount: 29.79 lb (14.88 kg)
- Warranty:**
Two-year limited

Part Number/Price

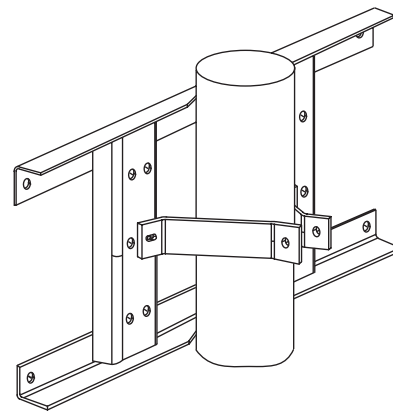
Part #	Description	Est. Weight	Price
Remote Display			
214825	LaserLight3 color 5-in (127 mm) messaging remote display	20 lb	\$2,110.00
Weight Indicator			
205780	LaserLight3 large display weight indicator	20 lb	\$2,495.00

Options/Accessories

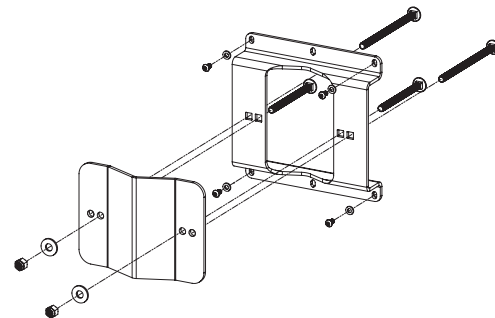
Part #	Description	Price
224940	Cantilever side-mount, mild steel, allows display to be turned for viewing, yellow powder coated finish.	\$595.00
212745	Pole mount kit, VERSA flat-wall for 2- to 6-in diameter pole, 6 fasteners (M4 × 8 mm)	\$100.00
75856	Pole mount kit, 4-in flange style, 24-in wide frame for use with 4- to 8-in diameter pole	\$280.00
208807	Sunshade, 8 in	\$135.00
209118	Wireless LAN, RS-232/Wi-Fi interface 802.11 a/b/g/n XPico module	\$250.00
212753	RF interface, paired ConnexLink radios transceiver kit and mount	\$835.00



*Pictured with optional sunshade visor
and legacy mode stop/go*



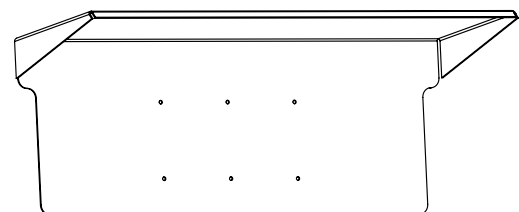
*Flange pole-mount kit
PN 75856*



*VESA pole-mount kit
PN 212745*



*Cantilever side-mount pictured with
optional VESA pole-mount kit*



*Sunshade
PN 208807*

LaserLT-60 and LaserLT-100

Remote Display or Weight Indicators



LaserLT-60



LaserLT-100

Approvals



Measurement
Canada
Approved



Part Number/Price

Part #	Description	Price
Remote Display		
185253	LaserLT-60 remote display, 2.4 in (60 mm) LED	\$1,330.00
185255	LaserLT-100 remote display, 4.0 in (100 mm) LED	\$1,715.00
Weight Indicator		
197453*	LaserLT-60, indicator for weighing 2.4 in (60 mm) LED	\$1,380.00
197454*	LaserLT-100, indicator for weighing 4.0 in (100 mm) LED	\$1,765.00

*See Instrumentation catalog section for LaserLT models that are configurable as a weight indicator (using SCT-1100 firmware).

- Max 10,000 divisions or multi-range
- A/D 24 bit 4-channel conversion
- Connect 4 cells with summing or up to 4 independent weighing systems

Options/Accessories

Part #	Description	Price
185256	Mount bracket, 2 tilting side brackets for LaserLT-100	\$65.00
185258	Visor for LaserLT-100	\$165.00

Standard Features

- LED display
- Auto Learn mode, weight value only
- Manual configuration for format length, weight location, termination character
- Manual Configuration mode for reading weight, variables and bitmap bytes
- Parameters for motion, overload, decimal point, net character, COZ
- Status LEDs for zero, motion, net, unit 1, unit 2
- Integrated five-key waterproof keypad with configurable scale commands
- Adjustment for six levels of brightness through the keypad
- Includes removable back wall mount bracket
- Fitted with anti-condensation air valve to regulate humidity and pressure

Specifications

Power:

AC voltages: 110 to 240 VAC
DC voltages: 12 to 24 VDC

Display:

6-digit, 7-segment discrete red LED lamps, single width
2.4 in (60 mm) or 4 in (100 mm) digit
Decimal/comma indication in any position
Annunciators for NT, Stability, COZ

Maximum Viewing Distance:

LaserLT-60: 2.4 in digit 75 ft (25 m)
LaserLT-100: 4 in digit 100 ft (30 m)

Communication Ports:

RS-232, RS-485

Input Data Format:

Baud rate: 1200 to 115.2 K software selectable
Even parity 7 data bits, or no parity 8 data bits

Update:

Software selectable 1-20/sec

Digital I/O:

Two inputs, 12 to 24 VDC
Two outputs, 48 VAC, 60 VDC max

Rating/Material:

304 stainless steel, IP68

Weight:

10 lb

Temperature:

Operating:
-40 °F to 120 °F (-40 °C to 49 °C)

Warranty:

One-year limited

Approvals:

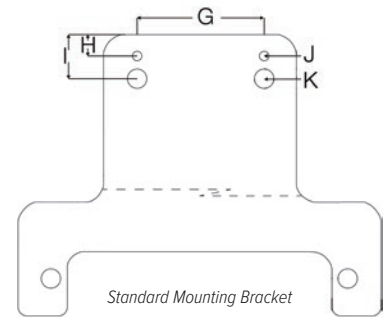
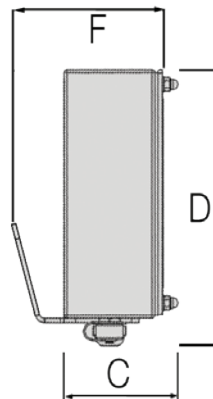
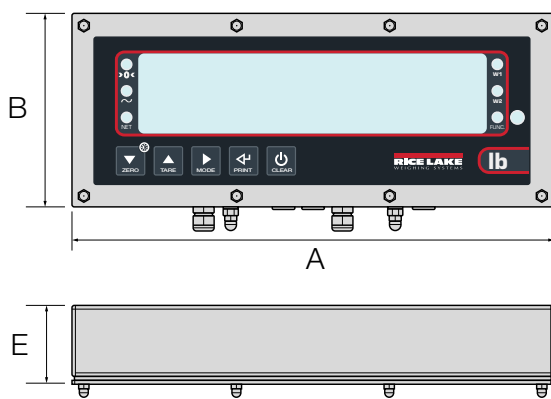
NTEP 20-046
Measurement Canada
CE Marked

LaserLT-60 and LaserLT-100

Remote Display or Weight Indicators

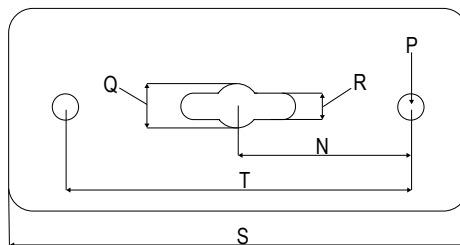
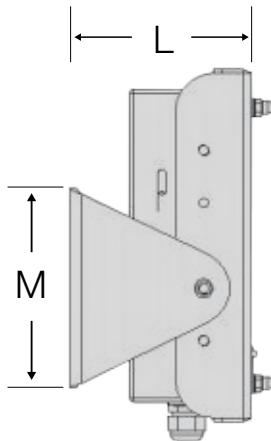
Dimensions

LaserLT-60/LaserLT-100			
LaserLT-60			
A	16.14 in (410 mm)	D	7.28 in (185 mm)
B	6.50 in (165 mm)	E	2.64 in (67 mm)
C	3.03 in (77 mm)	F	4.84 in (123 mm)
LaserLT-100			
A	16.93 in (430 mm)	D	7.63 in (194 mm)
B	7.28 in (185 mm)	E	2.52 in (64 mm)
C	2.52 in (64 mm)	F	3.98 in (101 mm)
Mount Bracket Hole Dimensions			
G	2.36 in (60 mm)	J	0.24 in (6 mm)
H	0.39 in (10 mm)	K	0.39 in (10 mm)
I	0.81 in (21 mm)		



Standard Mounting Bracket

Optional Side Bracket for LaserLT-100 Hole Dimensions			
L	3.98 in (101 mm)	Q	0.43 in (11 mm)
M	4.13 in (105 mm)	R	0.28 in (7 mm)
N	1.57 in (40 mm)	S	4.13 in (105 mm)
P	0.28 in (7 mm)	T	3.15 in (80 mm)



LaserLT-100
Optional Side Bracket

REMOTE DISPLAYS /
SCOREBOARD

RD-232

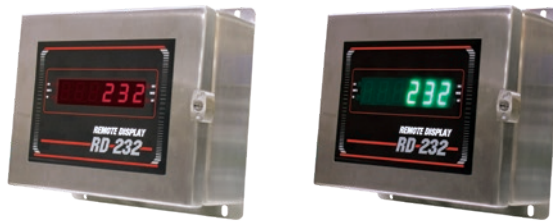
Remote Display



RD-232 NEMA Type 4X FRP Enclosure



RD-232 Compact Stainless Steel Wall Mount Enclosure



RD-232 NEMA Type 4X Stainless Steel Wall Mount Enclosure

Standard Features

- AC or DC operation
- Easy-to-read 0.8 in (20 mm) LED red or green (sunlight visible)
- Three enclosure types or panel mount kit
- Four annunciators
- Full floating decimal point
- Compatible with a variety of digital weighing indicators; DIP switch selectable intuitive data receiver interprets serial strings

Specifications

Display:

6-digit, 7-segment, 0.8 in (20 mm)
LED
Red (standard intensity)
Green (sunlight visible)

Annunciators:

lb, kg, gross, net

Operating Voltage:

115 VAC, 230 VAC available
DC voltage Range: 6.2 to 18 VDC

Input Interface:

RS-232, 20 mA active or passive current loop
ASCII compatible

Baud Rate:

Selectable: 300, 600, 1200, 2400, 4800, 9600, 19200

Temperature:

Operating:
-13 °F to 104 °F (-25 °C to 40 °C)

Rating/Material:

NEMA Type 4X FRP or stainless steel

Weight:

Approximately 5 lb (2.3 kg)
Stainless steel unit, approximately 8 lb (3.6 kg)

Warranty:

One-year limited

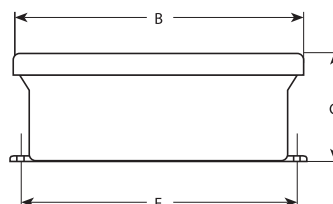
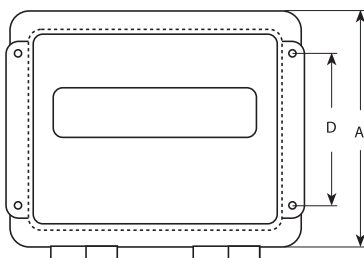
Part Number/Price

Part #	Description	Est. Weight	Price
Red LED			
32716	RD-232, 115 VAC/12 VDC, FRP enclosure, red LED	5 lb	\$1,030.00
68786	RD-232, 115 VAC/12 VDC, compact stainless steel wall mount enclosure, red LED	5 lb	\$1,030.00
32717	RD-232, 115 VAC/12 VDC, NEMA Type 4X stainless steel wall mount enclosure, red LED	8 lb	\$1,280.00
32727	RD-232, 115 VAC/12 VDC, panel mount, red LED	3 lb	\$980.00
34748	RD-232, 230 VAC/12 VDC, no power cord, FRP enclosure, red LED	5 lb	\$1,130.00
Green LED			
178168	RD-232, 117 VAC/12 VDC, FRP enclosure, green LED	5 lb	\$1,030.00
178169	RD-232, 117 VAC/12 VDC, compact stainless steel wall mount enclosure, green LED	5 lb	\$1,030.00
178170	RD-232, 117 VAC/12 VDC, NEMA Type 4X stainless steel wall mount enclosure, green LED	8 lb	\$1,280.00
178171	RD-232, 220 VAC/12 VDC, FRP enclosure, no power cord, green LED	5 lb	\$1,130.00

Specify interfacing indicator when ordering a remote display

Options/Accessories

Part #	Description	Price
33210	Additional operating manual (RD-232/RD-300)	\$25.00



Dimensions

RD-232				
FRP Enclosure				
A	8.00 in (203 mm)	D	4.00 in (101 mm)	
B	9.50 in (241 mm)	E	9.00 in (222 mm)	
C	6.00 in (152 mm)			
Stainless Steel Enclosure				
A	8.00 in (203 mm)	D	8.63 in (219 mm)	
B	10.00 in (254 mm)	E	8.00 in (203 mm)	
C	4.31 in (109 mm)			
Compact Stainless Steel Enclosure				
A	6.25 in (158 mm)	D	5.25 in (133 mm)	
B	9.25 in (234 mm)	E	8.50 in (215 mm)	
C	2.00 in (50 mm)			
Panel Mount				
A	5.88 in (149 mm)	D	5.12 in (130 mm)	
B	7.88 in (200 mm)	E	7.12 in (180 mm)	
C	2.00 in (50 mm)			



RD-300 NEMA Type 4X FRP Enclosure



RD-300 Compact Stainless Enclosure



RD-300 NEMA Type 4X Stainless Steel Enclosure

Standard Features

- Easy-to-read 1 in (25 mm) LCD
- Three enclosure types or panel mount kit
- Status annunciators
- AC operation
- Backlight for dark conditions
- Compatible with a variety of digital weight indicators; intuitive data receiver automatically interprets serial strings

Specifications

Display:

6-digit, 7-segment, 0.8 in (20 mm) LED

Annunciators:

lb, kg, gross, net

Operating Voltage:

115 VAC, 230 VAC available
DC Voltage Range: 6.2 to 18 VDC

Input Interface:

RS-232, 20 mA active or passive current loop
ASCII compatible

Baud Rate:

Selectable: 300, 600, 1200, 2400, 4800, 9600, 19200

Temperature:

Operating:
-13 °F to 104 °F (-25 °C to 40 °C)

Rating/Material:

NEMA Type 4X FRP or stainless steel

Weight:

Approximately 5 lb (2.3 kg)
Stainless steel unit, approximately 8 lb (3.6 kg)

Warranty:

One-year limited

Part Number/Price

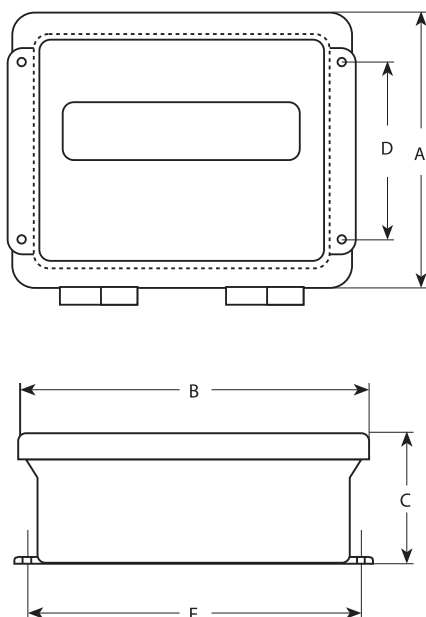
Part #	Description	Est. Weight	Price
68782	RD-300 AC, compact stainless steel enclosure with backlight	5 lb	\$1,055.00
22532	RD-300 AC, FRP enclosure with backlight	5 lb	\$1,055.00
22536	RD-300 AC, NEMA Type 4X stainless steel enclosure with backlight	8 lb	\$1,305.00
22540	RD-300 AC, panel mount with backlight	3 lb	\$980.00
34750	RD-300 AC, 230 VAC, FRP enclosure with backlight	5 lb	\$1,155.00

Options/Accessories

Part #	Description	Price
33210	Additional operating manual (RD-300/RD-232)	\$25.00

Dimensions

RD-300			
FRP Enclosure			
A	8.00 in (203 mm)	D	4.00 in (101 mm)
B	9.50 in (241 mm)	E	8.75 in (222 mm)
C	6.00 in (152 mm)		
Stainless Steel Enclosure			
A	8.00 in (203 mm)	D	8.63 in (219 mm)
B	10.00 in (254 mm)	E	8.00 in (203 mm)
C	4.31 in (109 mm)		
Compact Stainless Steel Enclosure			
A	6.25 in (158 mm)	D	5.25 in (133 mm)
B	9.25 in (234 mm)	E	8.50 in (215 mm)
C	2.00 in (50 mm)		
Panel Mount			
A	5.88 in (149 mm)	D	5.12 in (130 mm)
B	7.88 in (200 mm)	E	7.12 in (180 mm)
C	2.00 in (50 mm)		



This image shows a full page of blank graph paper. The grid consists of thin, light gray horizontal and vertical lines that intersect to form small squares across the entire surface. There are no margins, text, or other markings on the paper.