

CW-90X

OVER/UNDER WASHDOWN
CHECKWEIGHER



RICE LAKE
WEIGHING SYSTEMS

www.ricelake.com

Performance Under Extreme Pressure

Reliable Strength

The CW-90X is built for the demanding environments of the food processing industry. Designed to withstand harsh washdown environments, the CW-90X has an IP69K rating and hermetically sealed, stainless steel load cells securely held in a water-tight enclosure. The CW-90X is constructed of 304 stainless steel with a five-point overload protection system, helping prevent load cell damage while providing the most economical solution to a broad range of applications.

The CW-90X has a Gore® PreVent® breather vent with GORE-TEX® material that allows air to freely flow in and out of the indicator enclosure while preventing water and dust from entering. In areas of extreme temperature change, this technology helps eliminate the possibility of damaging condensation. The piezo keypad of the CW-90X has a non-tactile function and a smooth, hardened surface to withstand even sharp knife points. These design features make the CW-90X one of the more durable and reliable checkweighers for the food processing industry.

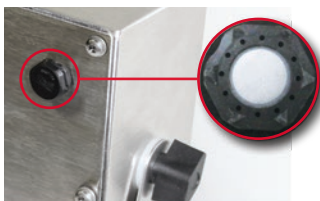
Simple Operation

The CW-90X has a variety of powerful features designed to simplify operation. Program the CW-90X to accept product at predetermined set values and then use the checkweigher by relying solely on the bright over/under lights. A red light displays an under weight condition, yellow is over, and a green light indicates the product is within the specified target values.

Flexible Features

The CW-90X has the capacity to store up to 50 individual IDs to recall previously stored information. It can also be used with optional Ethernet, USB and fiber optic ports to capture production floor data.

When a standard-size scale base or column doesn't quite fit your application, Rice Lake will work with you to create a custom solution to meet your unique weighing needs.



MOISTURE CONTROL

Eliminate the possibility of damaging moisture with the Gore PreVent breather vent.

GORE, GORE-TEX and design are registered trademarks of W.L. Gore & Associates, Inc.



EASY TO READ

Display contrast can be easily adjusted to suit any environment.



HEAVY-DUTY KEYPAD

Made to withstand sharp knife-point contacts as well as contaminants and liquids, Rice Lake's CW-90X features a tough piezo keypad. Its extra-strength material is the most durable in the industry, ensuring your scale will continue to work through any challenge.



NSF APPROVAL

In our commitment to the food processing industry, the CW-90X is fully compliant with NSF standards. NSF International provides certification* services for equipment used in the processing of meat and poultry. These standards have been specified by the USDA to be sure the highest quality equipment is used for food manufacturing purposes.

*NSF/ANSI/3-A Standards 14159-1, -2 and -3.



IP69K—YOUR BEST DEFENSE

Because the CW-90X has a hermetically sealed load cell, a stainless steel indicator and an IP69K rating, it can withstand high temperature and high pressure washdowns in harsh environments. The CW-90X also has a 304 stainless steel base to meet all of your HACCP and food industry requirements.

Predicting Growth? Get

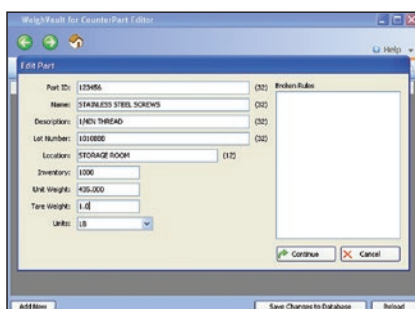
WeighVault®

for CW-90/CW-90X

WeighVault® for your PC surpasses the CW-90/90X's 50 ID limitation and eliminates front-panel entry by letting operators add, edit and access IDs through a PC. As transactions occur, WeighVault collects data from single or multiple checkweighers and provides detailed reports which can be exported to Excel®, Word or as a PDF.

For more information regarding WeighVault, please visit:
www.ricelake.com/weighvault

Excel is a registered trademark of Microsoft® Corporation.



STANDARD FEATURES

Indicator:

- Piezo keypad consisting of ZERO, UNITS, PRINT, TARE, OVER, UNDER, ID, TARGET, ENTER, MENU, POWER
- 304 stainless steel, IP69K rated
- Gore™ PreVent® breather vent
- Storage for up to 50 IDs
- Unit of Measure: kg, gm, lb, oz, lb/oz
- High-intensity LED display
- Battery-backed time and date
- Two full-duplex serial ports
- Configurable print formats
- Audit trail tracking

Scale:

- IP69K, stainless steel hermetically sealed load cell
- 304 stainless steel
- Five-point overload protection

Optional Communications:

- Ethernet, USB or Fiber Optic
- Four configurable digital I/Os
- Reflash memory to upgrade firmware

SPECIFICATIONS

POWER AC:	Line voltages: 115/230 VAC Frequency: 50/60 Hz Fused at 2.5 A
POWER CONSUMPTION:	1.5 A at 115 VAC (8W), 0.75 A at 230 VAC (8W)
EXCITATION VOLTAGE:	+5VDC 8 x 350 ohm or 16 x 700 ohm load cells
ANALOG SIGNAL INPUT RANGE:	-0.5 mV/V + 4.5 mV/V
ANALOG SIGNAL SENSITIVITY:	0.3 µV/graduation minimum, 1.5 µV/graduation recommended
MEASUREMENT RATE:	960, 480, 240, 120, 60, 30, 15, 7.5 per second
SYSTEM LINEARITY:	+/-0.01% full scale
DIGITAL I/O:	4 channels on CPU board
CIRCUIT PROTECTION:	RFI, EMI, EFT, ESD and surge protection
DISPLAY:	Large 0.8 in, 14-segment, six-digit high-intensity red LED display with three color over/under bar graph
STATUS ANNUNCIATORS:	Designators for %, kg, gm, lb, oz, center of zero, Gross/Brutto, N, T, PT, neg, motion
OPERATING TEMPERATURE:	Legal: -10° C to 40° C
RATING MATERIAL:	IP69K, stainless steel
DISPLAY RESOLUTION:	100,000 graduations maximum
LOAD CELL:	IP69K, stainless steel hermetically sealed
WARRANTY:	Three-year limited

APPROVALS



R762006-681-10.02
European Test Certificate 681385
European EC Type-Approval 15692
Accuracy Class III max - 10,000

115 VAC OR 230 VAC			Platform Dimensions	Column Height
lb	Capacity lb/oz	Capacity kg	Inches	Inches
5	5 x 0.001 or 80 x 0.02	2.5 x 0.0005	10 x 10	12
10	10 x 0.002 or 160 x 0.05	5 x 0.001	10 x 10	12
25	25 x 0.005 or 400 x 0.1	10 x 0.005	10 x 10	12
25	25 x 0.005 or 400 x 0.1	10 x 0.005	12 x 12	12
50	50 x 0.01 or 800 x 0.2	25 x 0.005	12 x 12	12
100	100 x 0.02 or 1600 x 0.5	50 x 0.01	12 x 12	12

230 VAC CE marked/OIML approved			Platform Dimensions	Column Height
kg	Capacity kg		mm	mm
3	3 x 0.001		254 x 254 x 108	305
6	6 x 0.002		254 x 254 x 108	305
15	15 x 0.005		254 x 254 x 108	305
15	15 x 0.005		305 x 305 x 108	305
30	30 x 0.01		305 x 305 x 108	305
60	60 x 0.02		305 x 305 x 108	305

Custom sizes available

SALES AND TECHNICAL ASSISTANCE



EUROPE OFFICE

Via Della Fisica, 20
41042 Fiorano Mod.se (MO) - Italy
Tel. +39 0536 843418
www.diniargo.com



HEADQUARTERS

230 West Coleman Street
Rice Lake, Wisconsin 54868 - USA
Tel: (715) 234 9171 | Fax: (715) 234 6967
www.ricelake.com