

Uni-9 Series

Price Computing Scale with Printer and Color Touchscreen

Technical Manual



NOTICES

IMPORTANT NOTICE

Those who handle the machine must be aware of the hazards involved. These dangers may not be obvious, so it is imperative to follow the instructions detailed in this manual when installing, operating, inspecting, or servicing the machine. Therefore, we recommend that you thoroughly read and understand this manual before installing, operating, inspecting, or servicing the machine. ISHIDA is not liable for any damage, loss or injury that results from incorrect operation, insufficient caution, unauthorized modifications to the machine, or failure to follow the instructions contained in this manual.

LIMITATIONS OF LIABILITY

ISHIDA assumes no responsibility for special, indirect, or consequential damages, loss of profits or commercial loss in any way connected with the machine, whether such claim is based on contract, warranty, negligence, or strict liability.

ISHIDA assumes no responsibility for the user's programming of this machine, or any consequence thereof.

In no event shall ISHIDA be responsible for warranty, repair, or other claims regarding the machine unless ISHIDA's analysis confirms that the machines were properly handled, stored, installed, and maintained and not subject to contamination, abuse, misuse, or inappropriate modification or repair.

CHANGE IN SPECIFICATIONS

Machine specifications and accessories may be changed at any time due to improvements or other reasons. Consult with your ISHIDA representative at any time to confirm the actual specifications of the purchased machine.





ERRORS AND OMISSIONS

The information in this manual has been carefully checked and is believed to be accurate; however, no responsibility is assumed for clerical, typographical or proofreading errors, or omissions.

PRECAUTIONS

PRECAUTION SYMBOLS

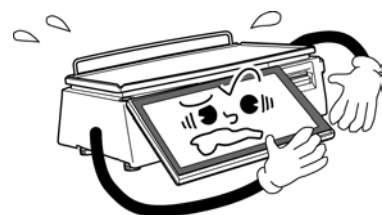
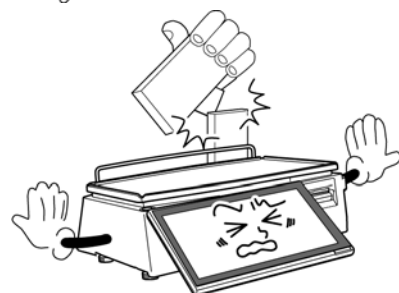
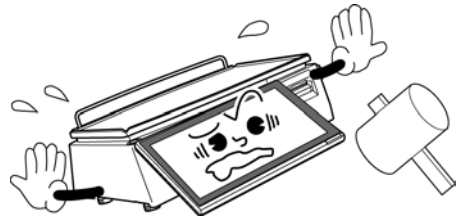
This machine is manufactured for use according to proper procedures by a qualified person and only for the purposes described in this manual. The following conventions are used to indicate and classify precautions depending on the level of danger, or seriousness of potential injury. Always heed the information provided in this manual. Failure to heed precautions can result in personal injury or property damage.

 WARNING	Indicates a potentially hazardous situation which, if not avoided, may result in serious injury or death. Additionally, there may be significant property damage.
 CAUTION	Indicates a potentially hazardous situation where, if not avoided, may result in minor or moderate injury or in property damage.
 INFOR	Indicates reference information for operation.
 REFER	Indicates the referred page for operation.

PRECAUTIONS FOR HANDLING

WARNING

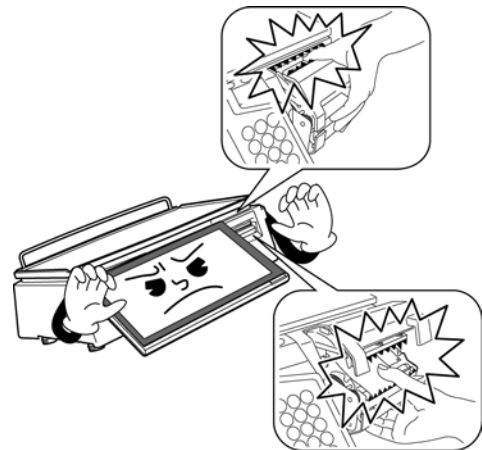
- **Do not allow water or any liquids to come into contact with the machine.**
Doing so may result in fire or cause the machine to break down.
- **Do not drop or apply a strong shock to the machine.**
Doing so may cause the machine to break down.
- **Do not disassemble, modify, or attempt to repair the machine.**
Doing so may damage the original safety functions.
- **Do not hold the connector cover when carrying the machine.**
Dropping the machine may result in injury or cause the machine to break down.
- **Do not hold the operation panel or weigh platter when carrying the machine.**
Doing so may cause the operation panel or the platter to break down.
- **Do not hold the customer display the when carrying the pole type machine.**
Dropping the machine may result in injury or cause the machine to break down.
- **Do not drop the cassette.**
Dropping the cassette may result in injury or cause the cassette to break down.



⚠ WARNING

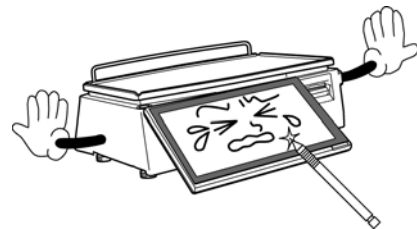
- **Handle with care when removing or inserting the cassette.**

Careless cassette handling may result in injury or cause the cassette to break down.



- **Do not press the touch panel with an edged thing.**

Doing so may scratch the panel and cause the machine to break down.



- **Do not dispose of batteries with normal household waste. Please obey your local regulations when disposing of used batteries.**



PRECAUTIONS WHEN USING CLEANING FLUIDS

CAUTION

Use a soft cloth and a neutral detergent to clean the machine.
Do not use thinner, benzene, etc. Doing so may damage the original safety functions.
For some parts, use cleaning fluid (isopropyl alcohol).



CAUTION

- Do not use cleaning fluid near fire as the fluid is flammable.
- Do not use cleaning fluid in a poorly ventilated area. Always provide adequate ventilation when cleaning.

Take the following actions in the event of an accident:

If the fluid gets in your eye

- Immediately wash your eye(s) with water for at least 15 minutes, and consult your doctor.
- If you wear contact lenses, remove and wash them.

If the fluid comes into contact with your skin

- Immediately rinse the area of contact with water, and then wash with soap.
- If you notice any skin abnormalities at the area of contact, or if any pain persists, consult your doctor.

If the fumes of the fluid are inhaled

- Immediately move the victim to an area where fresh air is available, and have the victim lie down and keep warm.
- If breathing becomes difficult or stops, provide artificial respiration and seek medical attention immediately.

If the fluid is swallowed

- Do not try to induce vomiting.
- Do not give the victim anything to drink, and do not rinse the mouth.
- If vomiting occurs naturally, have the victim lean forward to reduce risk of aspiration.
- Keep the victim warm and seek medical attention.

memo

TABLE OF CONTENTS

Chapter 1 BASIC INFORMATION

1.1	OUTER DIMENSIONS FOR EACH TYPE	1-1
1.1.1	OUTER DIMENSIONS FOR BENCH TYPE.....	1-1
1.1.2	OUTER DIMENSIONS FOR LARGE PLATTER TYPE.....	1-2
1.1.3	OUTER DIMENSIONS FOR ELEVATED TYPE	1-3
1.1.4	OUTER DIMENSIONS FOR POLE TYPE.....	1-4
1.1.5	OUTER DIMENSIONS FOR SHORT POLE TYPE	1-5
1.1.6	OUTER DIMENSIONS FOR SELF-SERVICE TYPE	1-6
1.1.7	OUTER DIMENSIONS FOR XL TYPE	1-7
1.2	SPECIFICATIONS.....	1-8
1.3	INSTALLATION	1-9
1.3.1	POWER SUPPLY	1-9
1.3.2	PRECAUTIONS FOR INSTALLATION.....	1-10

Chapter 2 ASSEMBLY DRAWINGS

2.1	BENCH TYPE.....	2-1
2.2	XL TYPE.....	2-3
2.3	POLE UNIT (POLE/SELF-SERVICE/ELAVATED TYPE).....	2-5
2.4	SHORT POLE UNIT (SHORT POLE TYPE).....	2-6
2.5	PRINTER FRAME UNIT (EACH TYPE).....	2-7
2.6	CASSETTE UNIT (EACH TYPE).....	2-8
2.7	CASSETTE UNIT (EACH TYPE).....	2-9

Chapter 3 BLOCK DIAGRAMS

3.1	BLOCK DIAGRAM (BENCH TYPE).....	3-1
3.2	BLOCK DIAGRAM (LARGE PLATTER TYPE).....	3-2
3.3	BLOCK DIAGRAM (ELEVATED TYPE).....	3-3
3.4	BLOCK DIAGRAM (POLE TYPE).....	3-4
3.5	BLOCK DIAGRAM (SHORT POLE TYPE).....	3-5
3.6	BLOCK DIAGRAM (SELF-SERVICE TYPE).....	3-6
3.7	BLOCK DIAGRAM (XL TYPE).....	3-7

Chapter 4 MACHINE DISASSEMBLY

4.1	DISASSEMBLY PROCEDURE FOR EACH TYPE.....	5-1
4.1.1	PLATE UNIT.....	5-1
4.1.2	MAIN UNIT COVER	5-2

4.1.3	OPERATION DISPLAY	5-3
4.1.4	USB PORT COVER	5-4
4.1.5	CUSTOMER DISPLAY	5-4
4.1.6	MAIN UNIT (POWER BOARD/MAIN BOARD).....	5-5
4.1.7	OPERATION DISPLAY	5-9
4.1.8	PLATE UNIT.....	5-11
4.1.9	THERMAL HEAD	5-12
4.1.10	THERMAL HEAD CABLE	5-13
4.2	ELEVATED TYPE	5-14
4.2.1	CUSTOMER DISPLAY	5-14
4.2.2	OPERATION DISPLAY	5-16

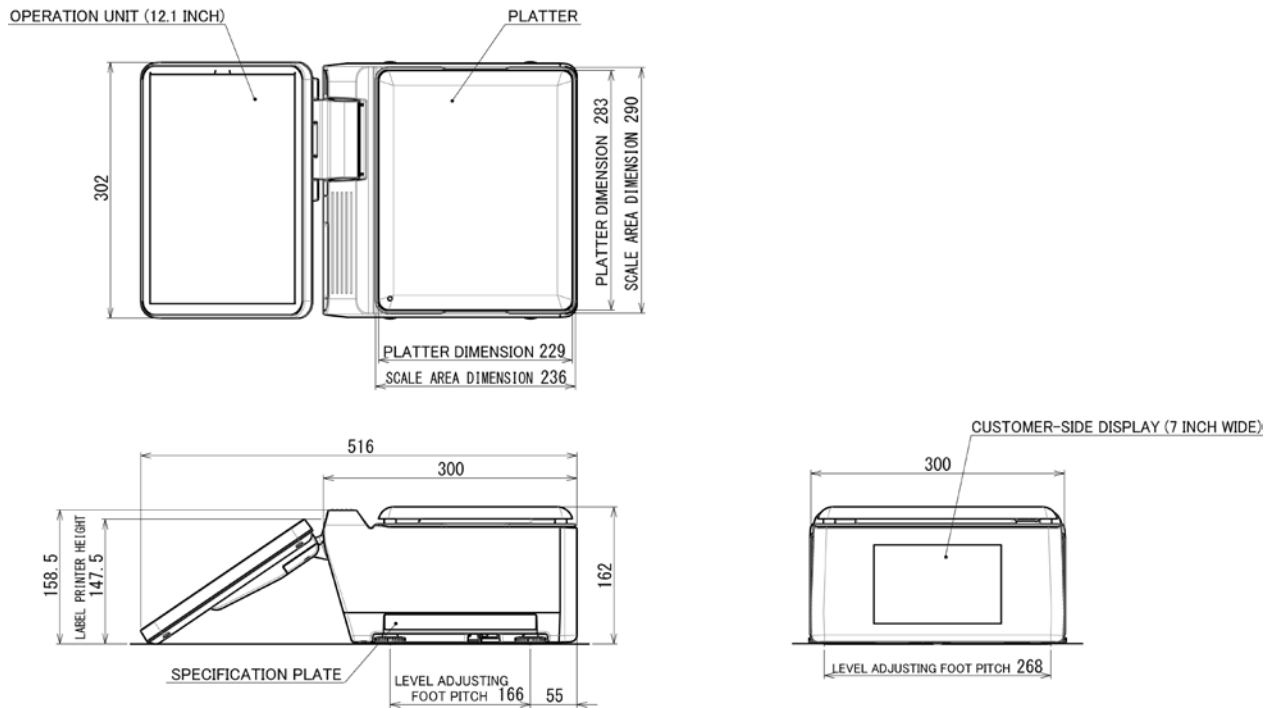
Chapter 5 OPTIONAL UNIT

5.1	OPTION LIST	6-1
5.2	OPTION INSTALLATION	6-1
5.2.1	LARGE PLATTER MODIFICATION KIT.....	6-1
5.2.2	MODIFICATION KIT FOR SEPARATE-TYPE PLATTER	6-3
5.2.3	GUIDE PLATTER.....	6-4
5.2.4	WIRELESS LAN KIT	6-5
5.2.5	USB-I2NET CONVERTER.....	6-6
5.2.6	USB-DIN8 CONVERTER.....	6-7
5.2.7	USB CONVERTER STAND	6-7
5.2.8	ANTITHEFT COVER FOR USB FLASH DRIVES	6-8
5.2.9	USB-RS232C CONVERTER	6-8
5.2.10	STANDARD CASSETTE	6-8
5.2.11	CASSETTE WITHOUT BACKING PAPER.....	6-9

BASIC INFORMATION

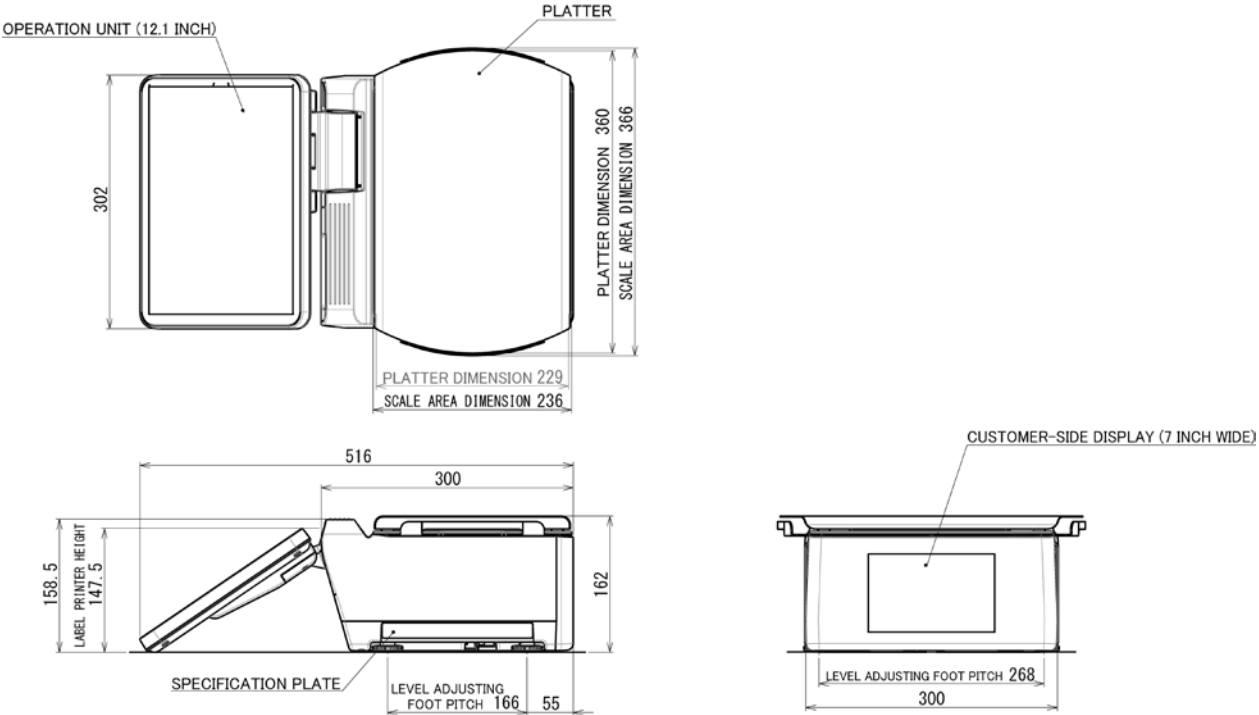
1.1 OUTER DIMENSIONS FOR EACH TYPE

1.1.1 OUTER DIMENSIONS FOR BENCH TYPE



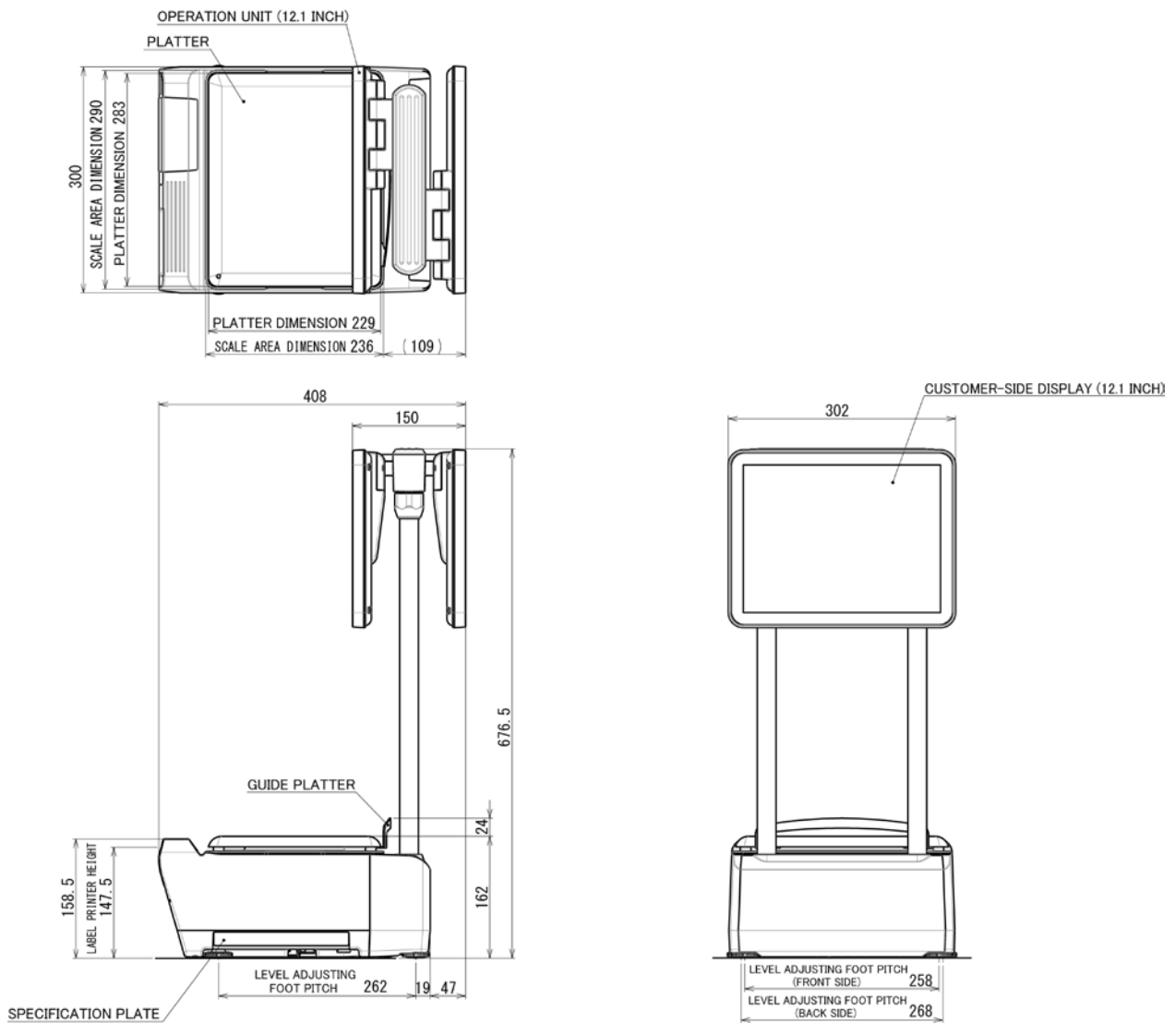
(unit : mm)

1.1.2 OUTER DIMENSIONS FOR LARGE PLATTER TYPE



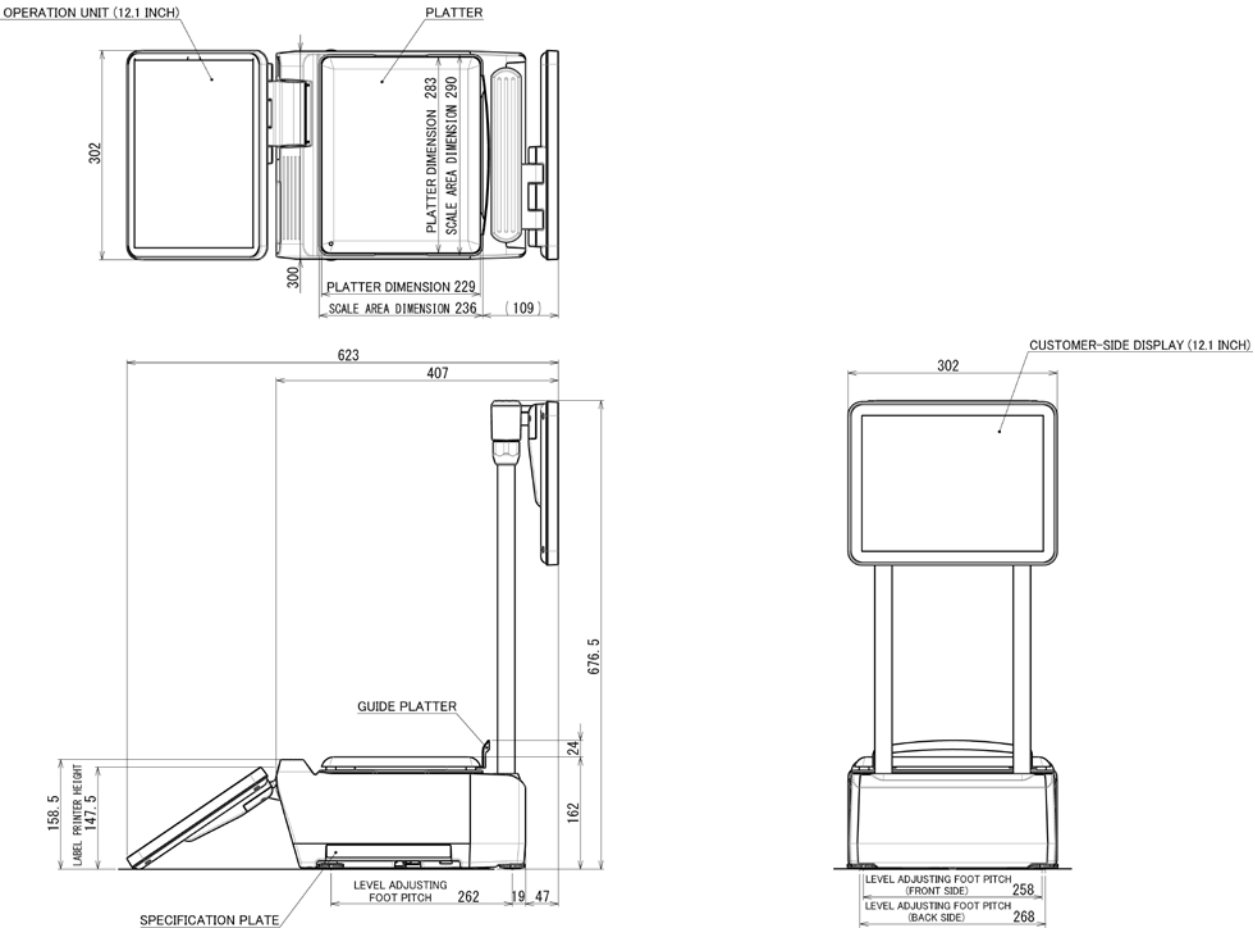
(unit : mm)

1.1.3 OUTER DIMENSIONS FOR ELEVATED TYPE



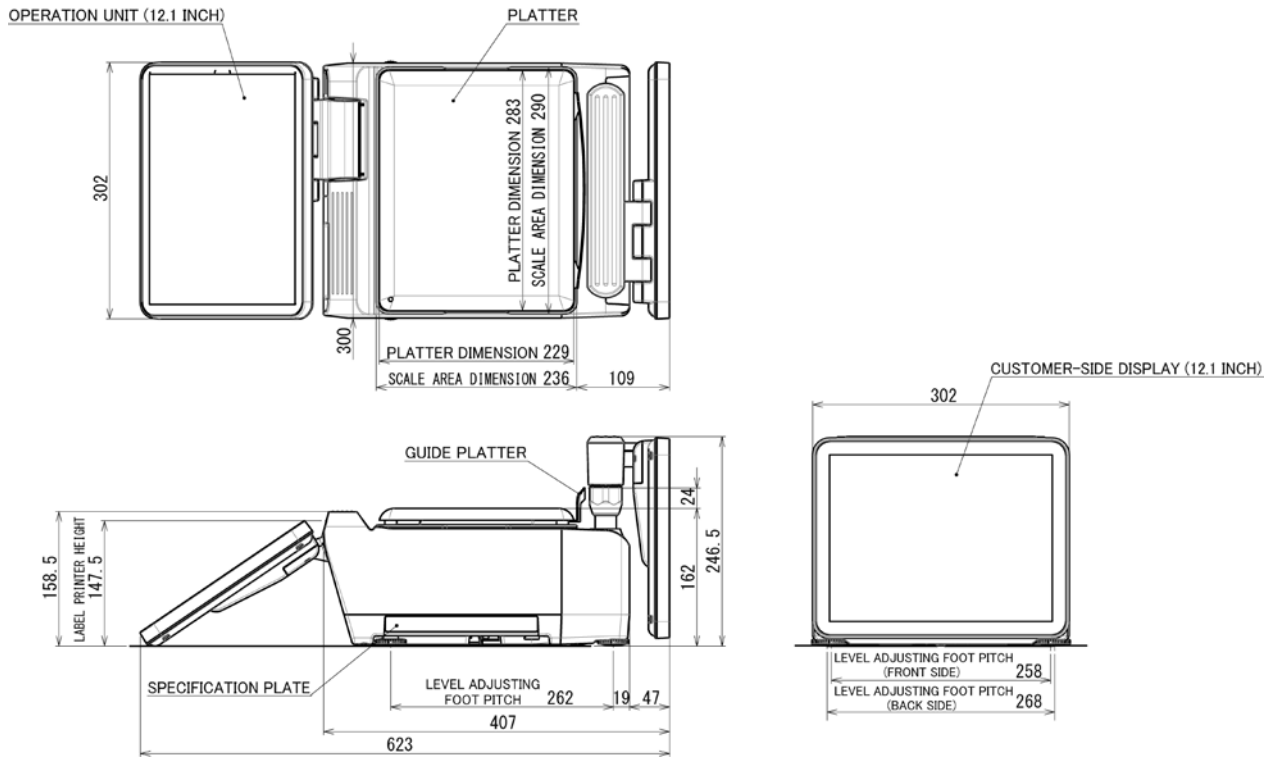
(unit : mm)

1.1.4 OUTER DIMENSIONS FOR POLE TYPE



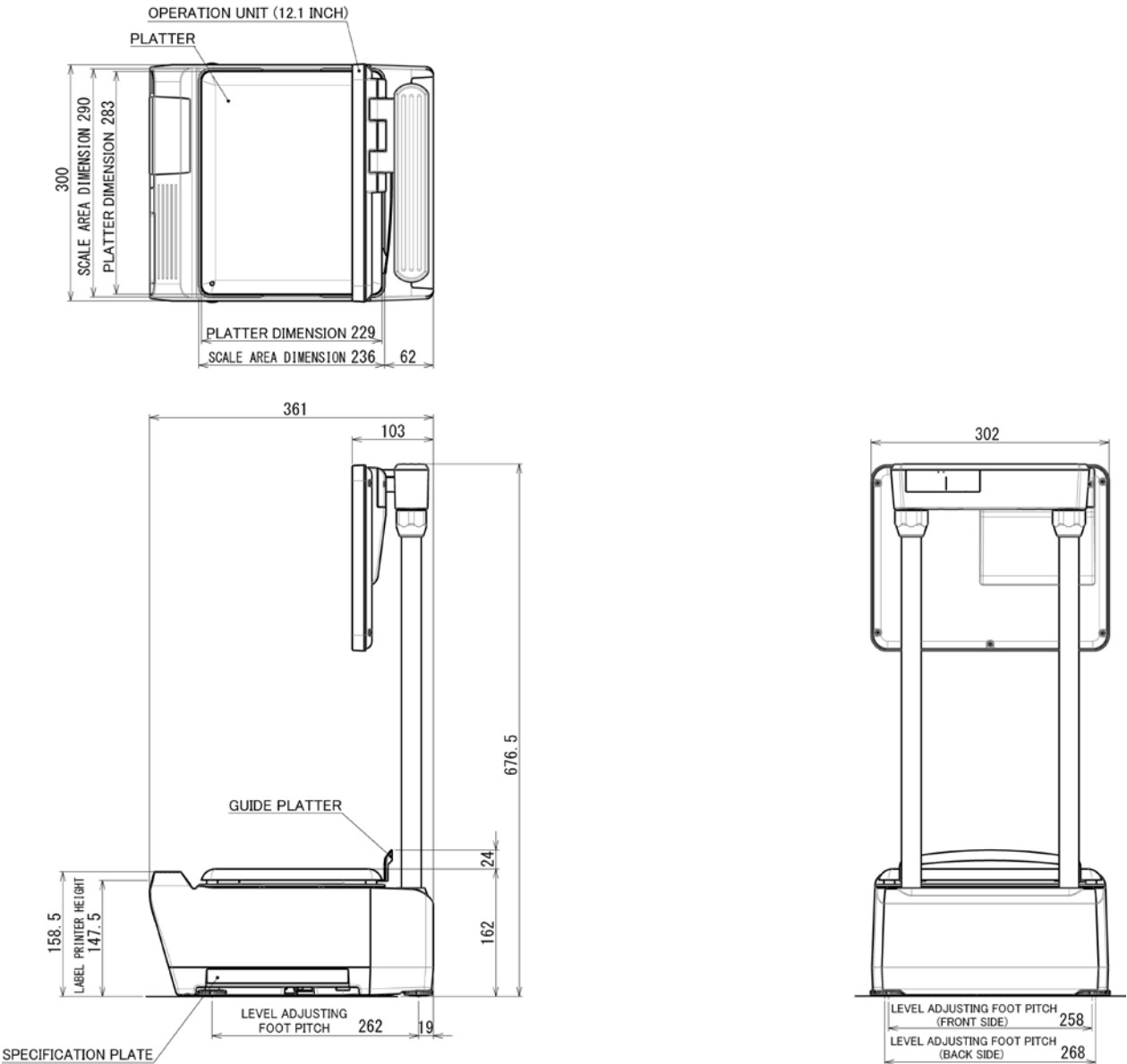
(unit : mm)

1.1.5 OUTER DIMENSIONS FOR SHORT POLE TYPE



(unit : mm)

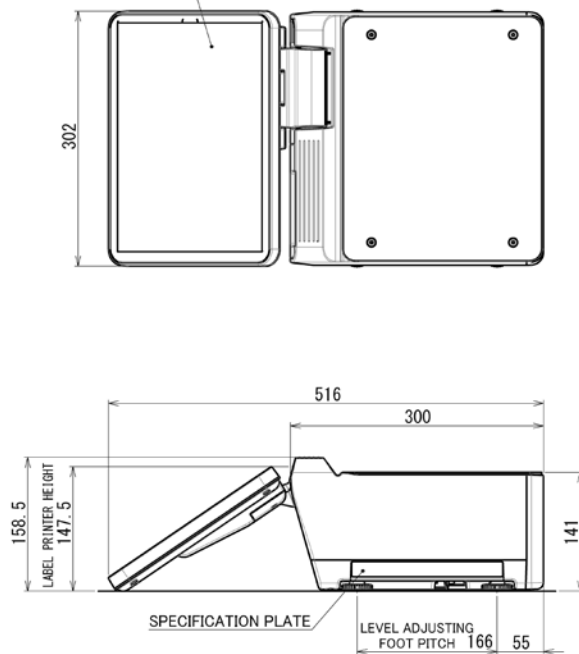
1.1.6 OUTER DIMENSIONS FOR SELF-SERVICE TYPE



(unit : mm)

1.1.7 OUTER DIMENSIONS FOR XL TYPE

OPERATION UNIT (12.1 INCH)



(unit : mm)

1.2 SPECIFICATIONS

Items	Descriptions
Use conditions	Temperature: 0 to 40°C Humidity: 20 to 85%, Non condensing.
Power supply:	AC100 – 240V, 50 / 60Hz
Power consumption	4.0A/2.0.A
Weighing capacity Scale interval	15 kg: 0 to 6/0.002 kg, 6 to 15/0.005 kg 30 lb: 0 to 15/0.005 lb, 15 to 30/0.01 lb
Weighing accuracy	1/3000
Operator/Customer display	Operator:12.1 inch color liquid crystal with back light, 800 X 600dots Customer:12.1 inch color liquid crystal with back light, 800 X 600dots (for POLE, SHORT POLE, ELEVATED, SELF SERVICE) 7.0 inch color liquid crystal with back light, 480 X 234dots (for BENCH, XL)
Printing method	Direct thermal method
Thermal head	3 inches (960dots) and 12 dots/mm
Printing speed	120mm/second <i>Note: The printing speed may vary according to label conditions.</i>
Printing effective size	78mm
Label size	Label width: 30mm to 80mm Label length: 30mm to 100mm
Input/Output	LAN 1 channel USB 4 channel SD 1 channel Drawer 1 channels
Program store medium	CF (4G bytes)

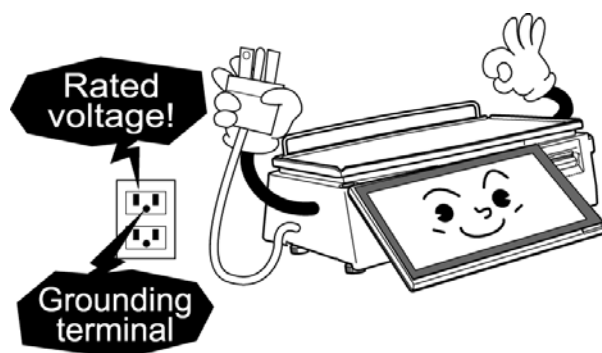
1.3 INSTALLATION

1.3.1 POWER SUPPLY

WARNING

It is strongly advised that the following safety measures must be observed to ensure the safe operation of the machine:

- Read precaution instructions described in this manual before connecting the power plug into the outlet.
- Always use a power supply with rated voltage. Never connect the machine power input with an AC power supply exceeding the rated voltage. To avoid any potential electrical shock, ensure that the protective ground wire is connected to the main grounding provision. Using the machine outside of the rated voltage may result in machine failure or danger such as electric shock.



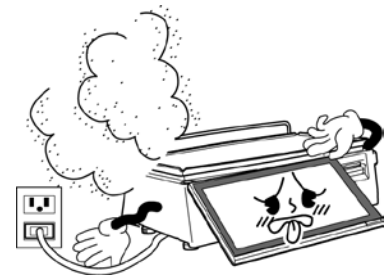
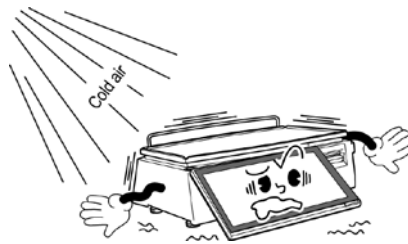
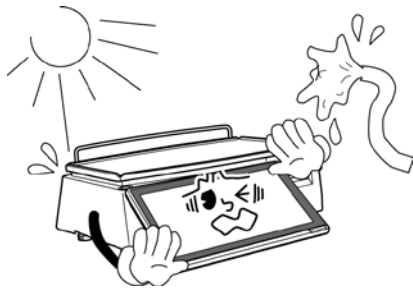
- **Prepare a dedicated power source.**
A power supply that generates voltage variation may cause a malfunction.
- **Do not stand on the power cable, and do not place anything heavy on the cable.**
Doing so may damage the cable, resulting in accident or trouble.
- **Disconnect power supply before servicing.**
To ensure your personal safety, disconnect the power supply before servicing.
- **Take precaution against residual electrical charge hazard.**
Capacitors inside the machine may still hold an electrical charge even after power is disconnected.
- **Do not remove covers or enclosures.**
To avoid personal injury and shock, do not open or remove any covers or enclosures of the machine unless specified in the manual.
- **Do not perform unspecified maintenance.**
For your personal safety, do not perform any maintenance procedures which are not specified in the manual.

1.3.2 PRECAUTIONS FOR INSTALLATION

WARNING

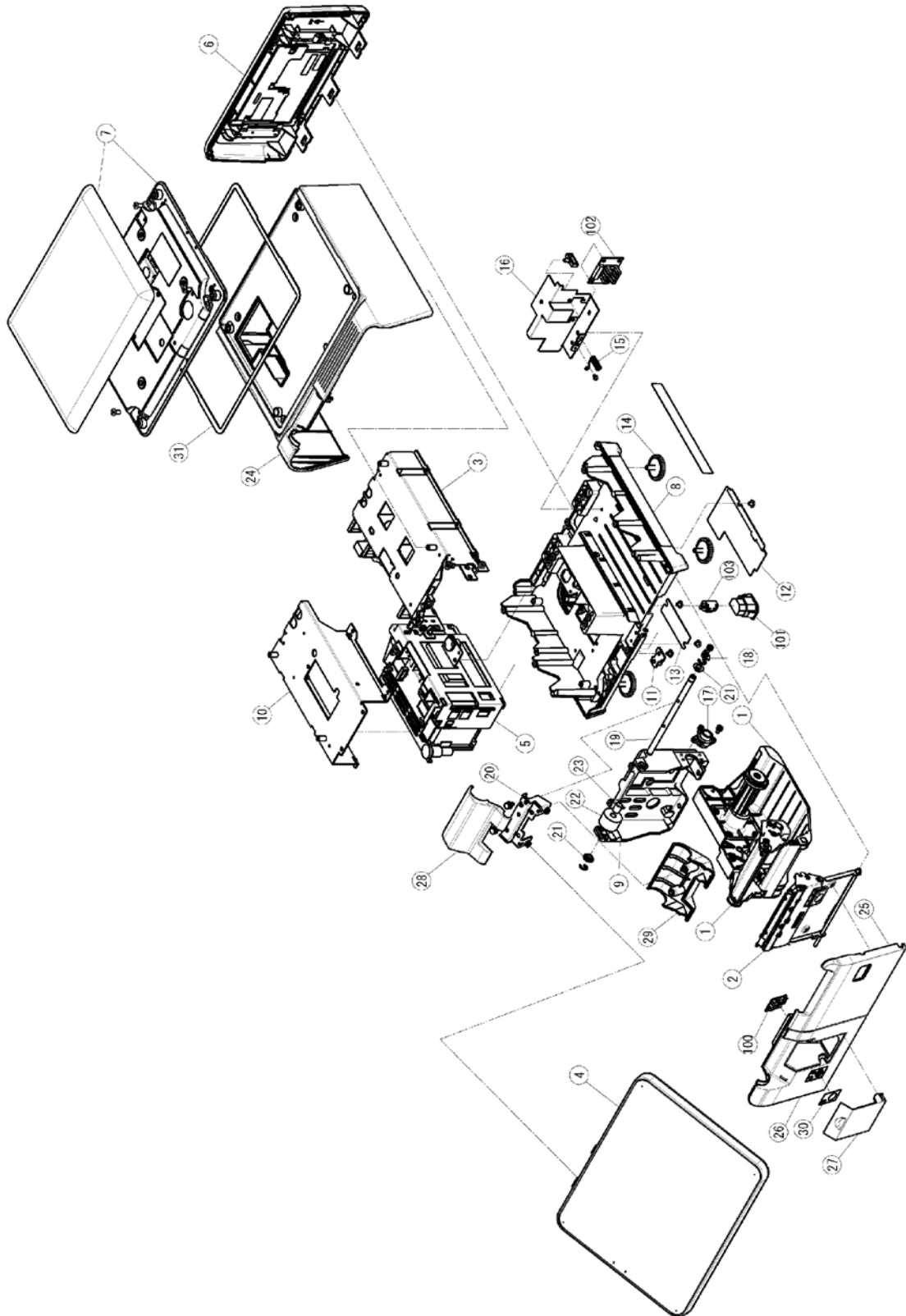
Do not install the machine in the following types of places:

- Places subject to high temperatures or high humidity
- Places exposed to direct sunlight
- Places where water or other liquids are easily spilled on the machine
- Places subject to excessive vibration or unstable foundations
- Places exposed to direct cold air from air conditioners or refrigerators
- Places where the floor or foundation is unstable
- Places subject to a lot of dust or dirt
- Places with large voltage fluctuations

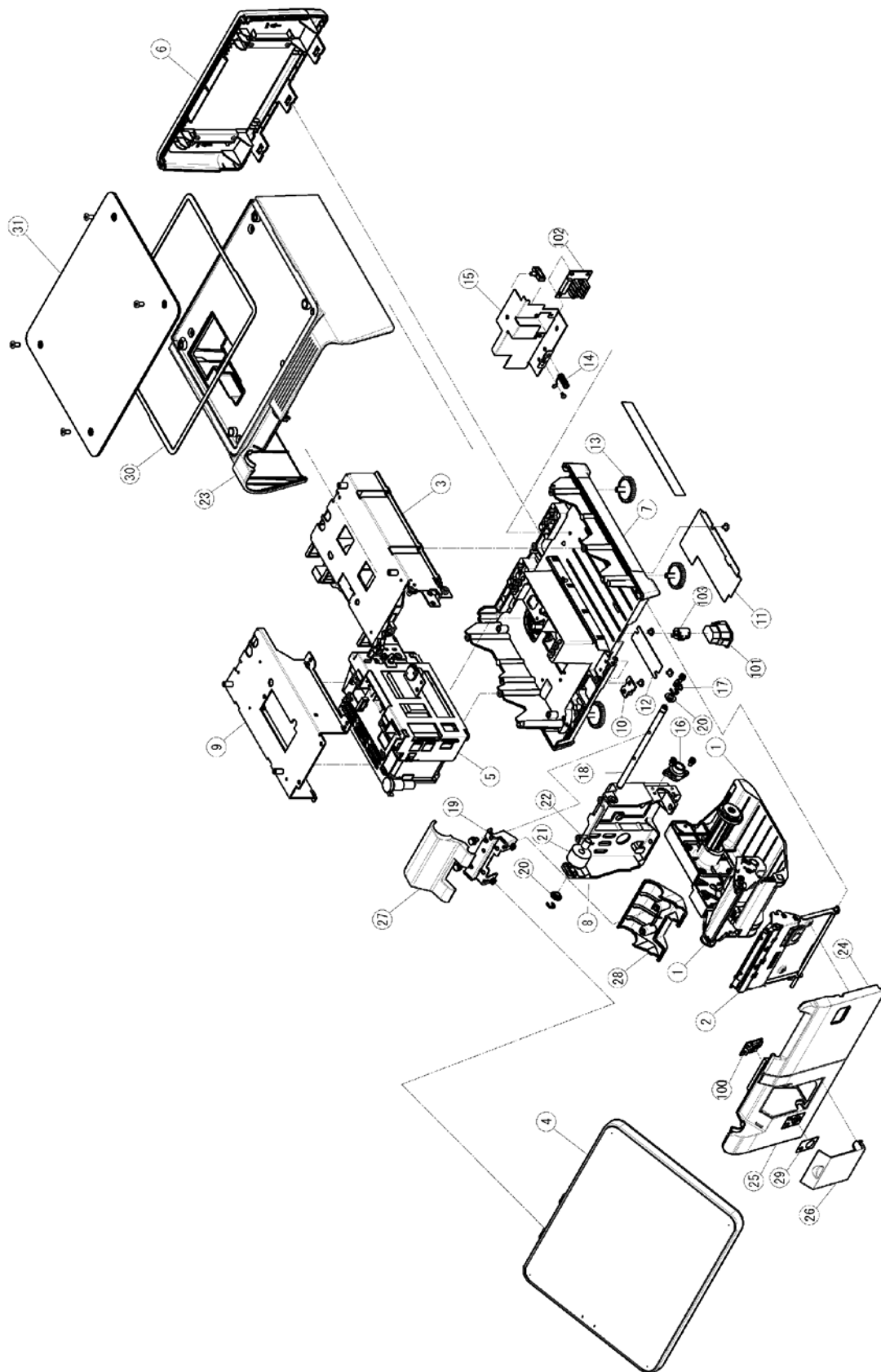


ASSEMBLY DRAWINGS

2.1 BENCH TYPE

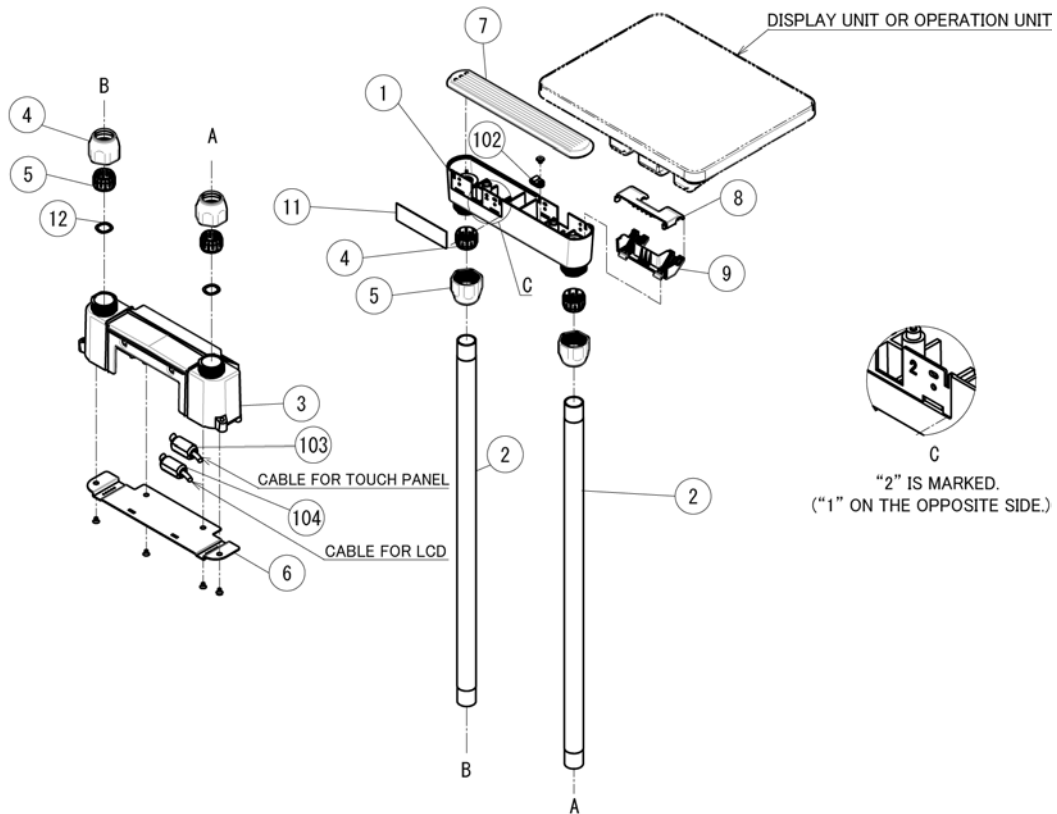


2.2 XL TYPE

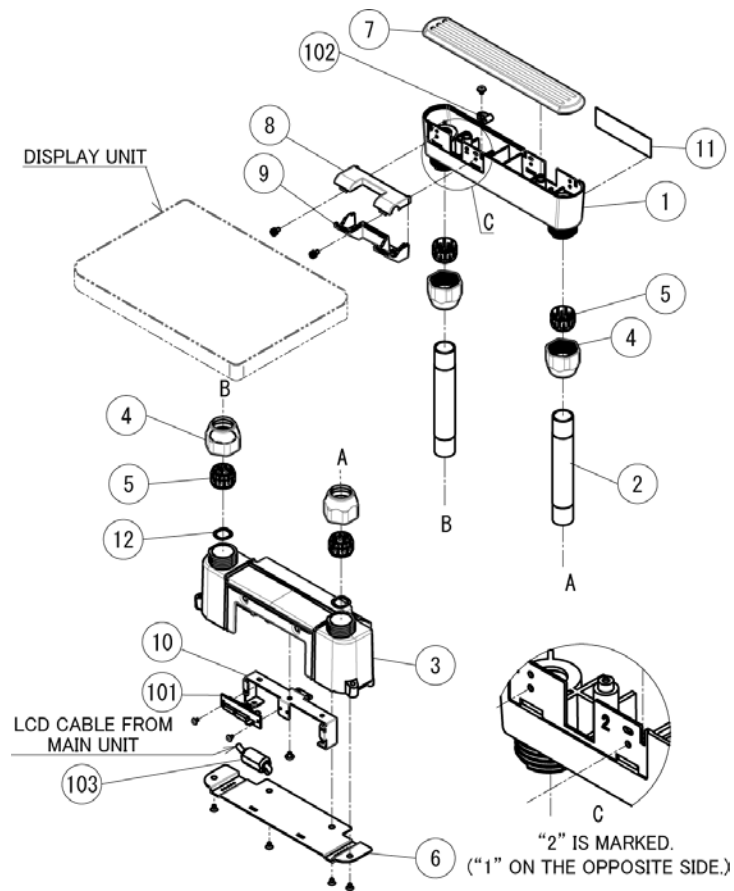


2.3 POLE UNIT (POLE/SELF-SERVICE/ELEVATED TYPE)

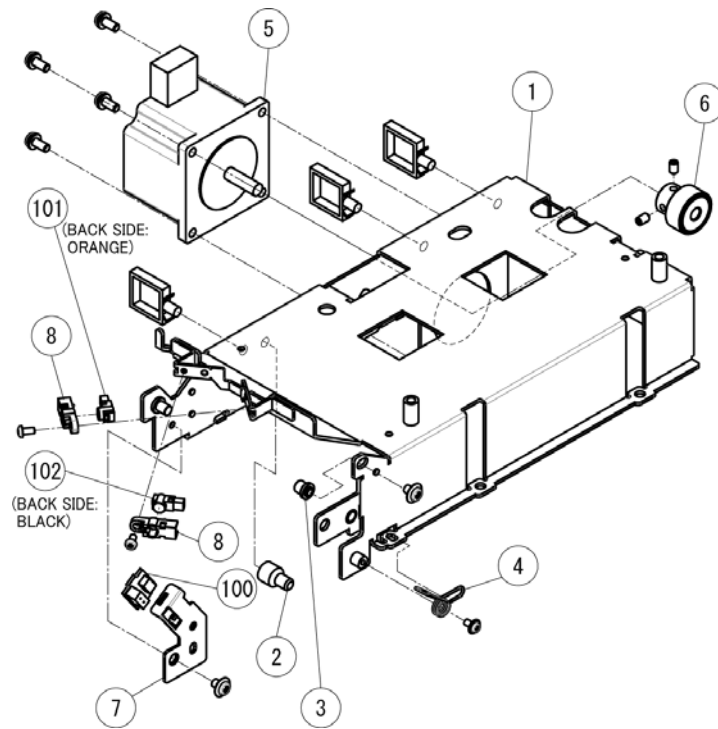
TYPE \ PART	8 AND 9	11	102	103	104
POLE	ONE OF EACH (MARK "2" SIDE)	ONE PART (MARK "1" SIDE)	ONE PART	NONE	ONE PART
SELF-SERVICE	ONE OF EACH (MARK "1" SIDE)	ONE PART (MARK "2" SIDE)	ONE PART	ONE PART	ONE PART
ELEVATED KEYBOARD	TWO OF EACH (MARK "1" AND "2" SIDES)	NONE	TWO PARTS	ONE PART	TWO PARTS



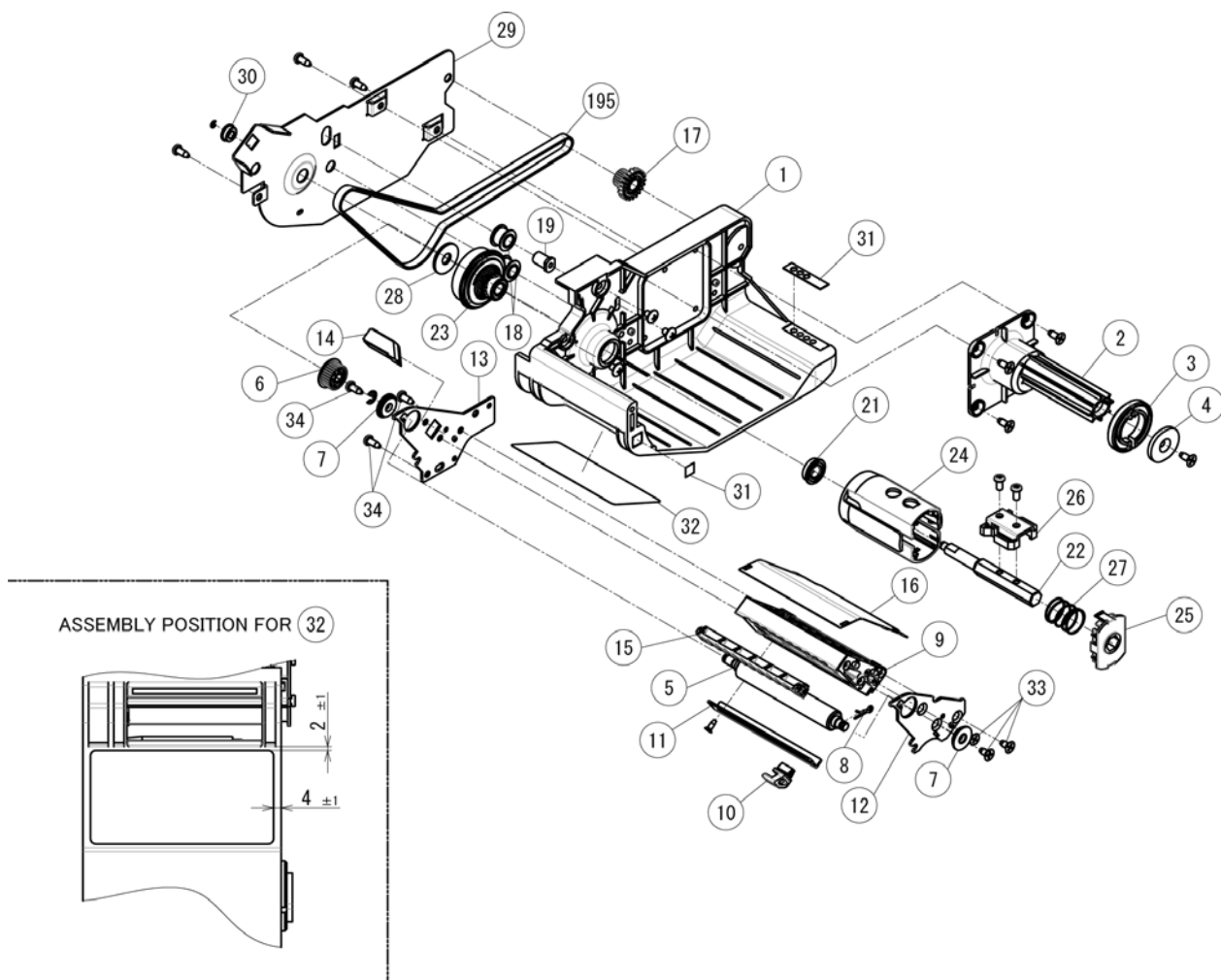
2.4 SHORT POLE UNIT (SHORT POLE TYPE)



2.5 PRINTER FRAME UNIT (EACH TYPE)

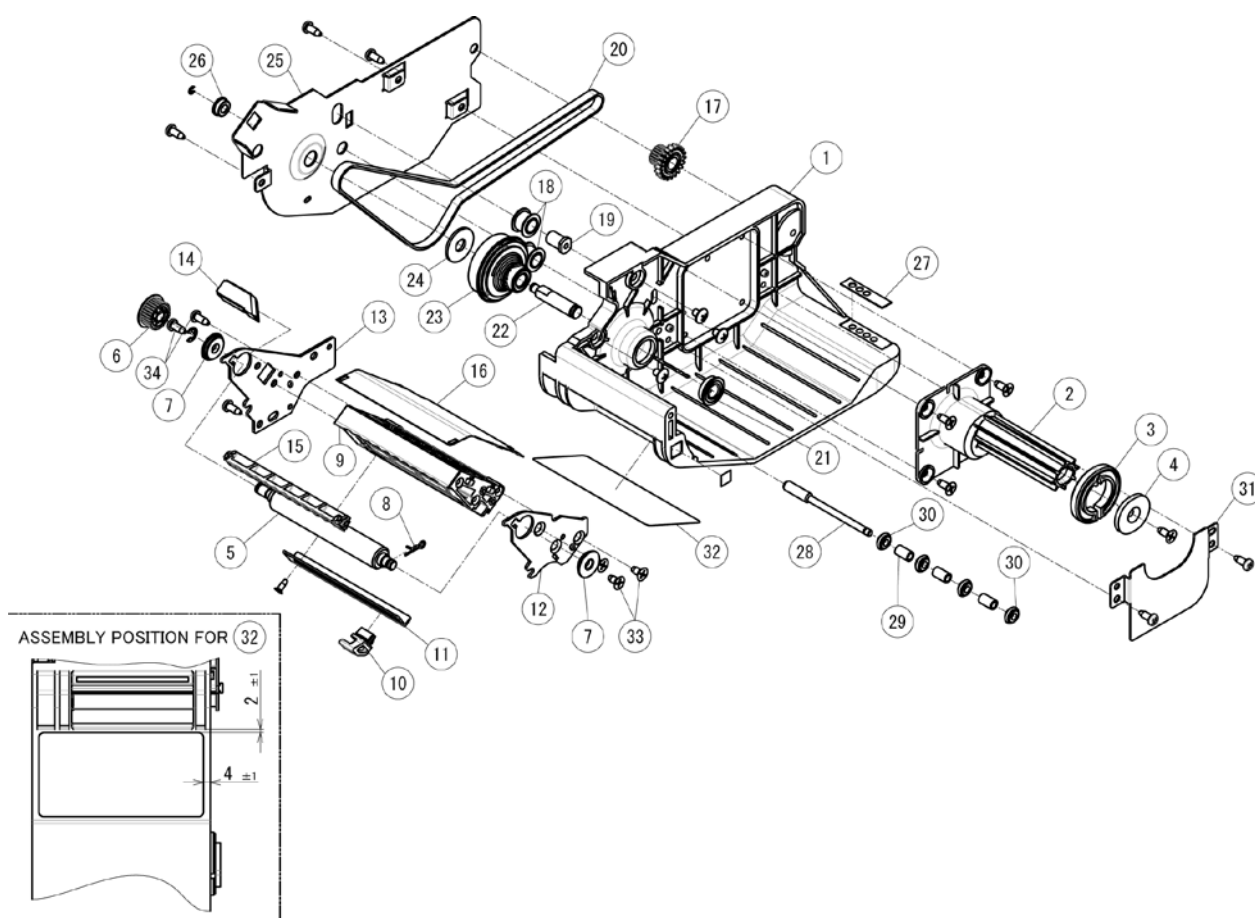


2.6 CASSETTE UNIT (EACH TYPE)



2.7 CASSETTE UNIT (EACH TYPE)

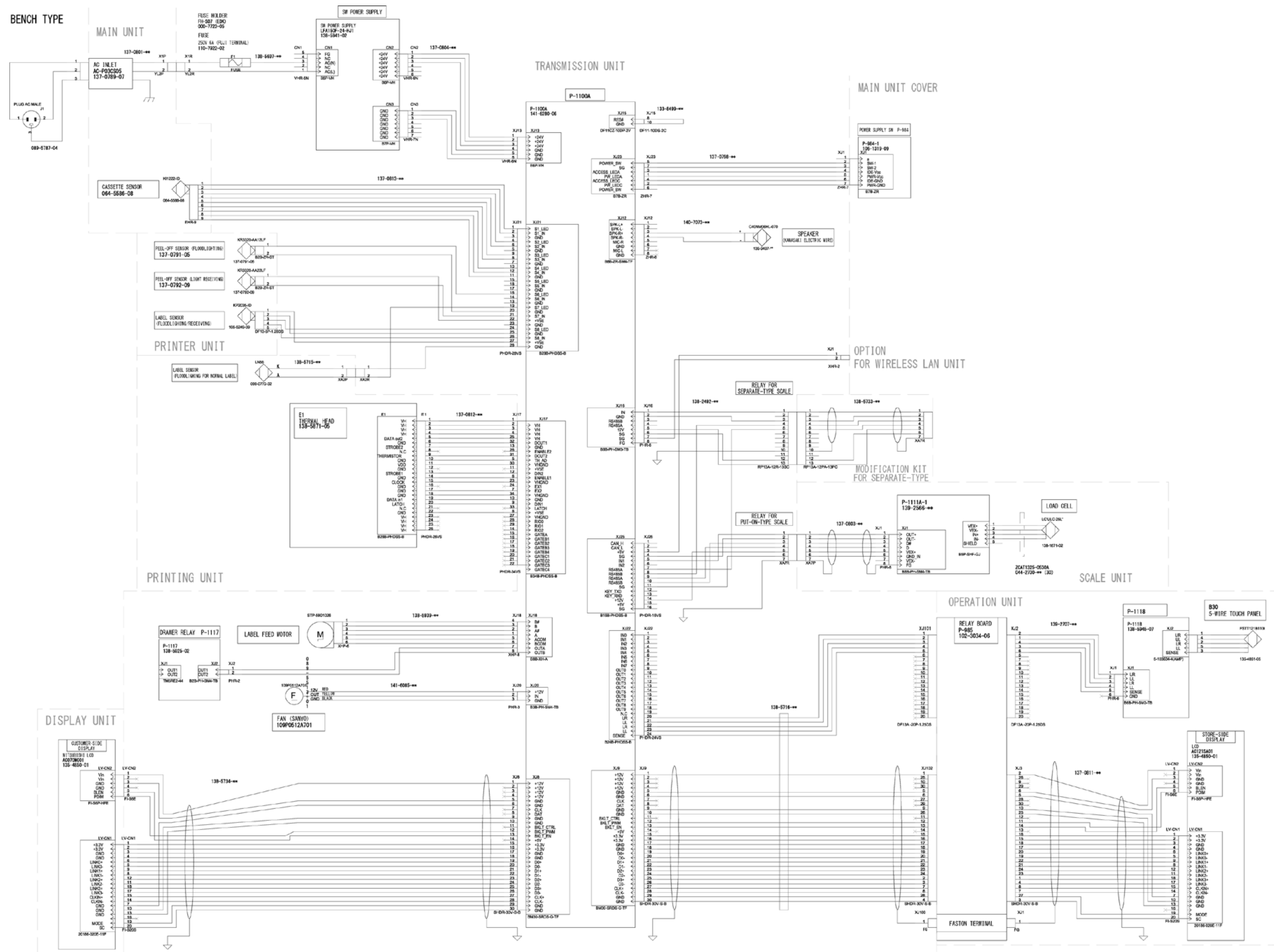
(without the backing paper)



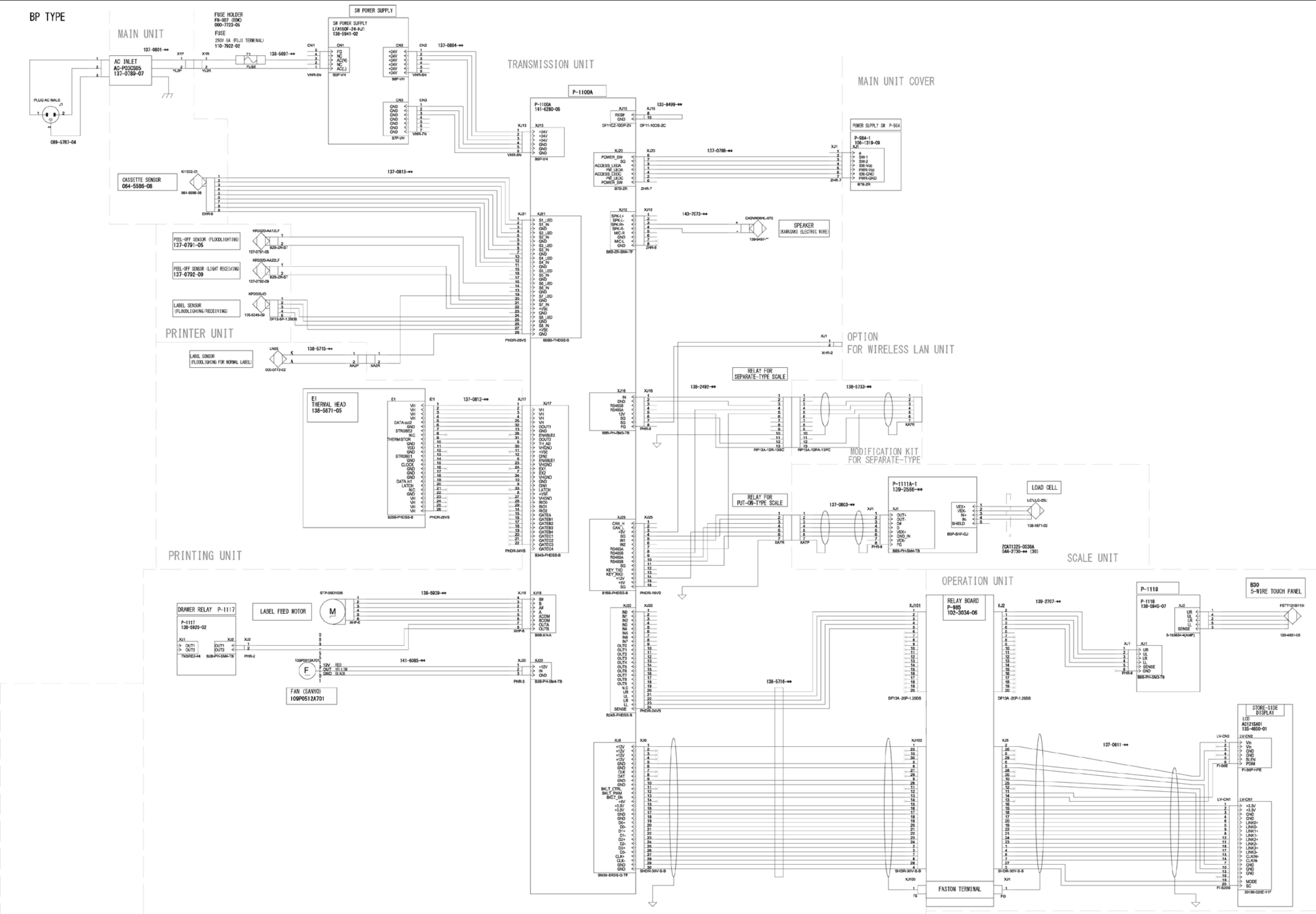
memo

BLOCK DIAGRAMS

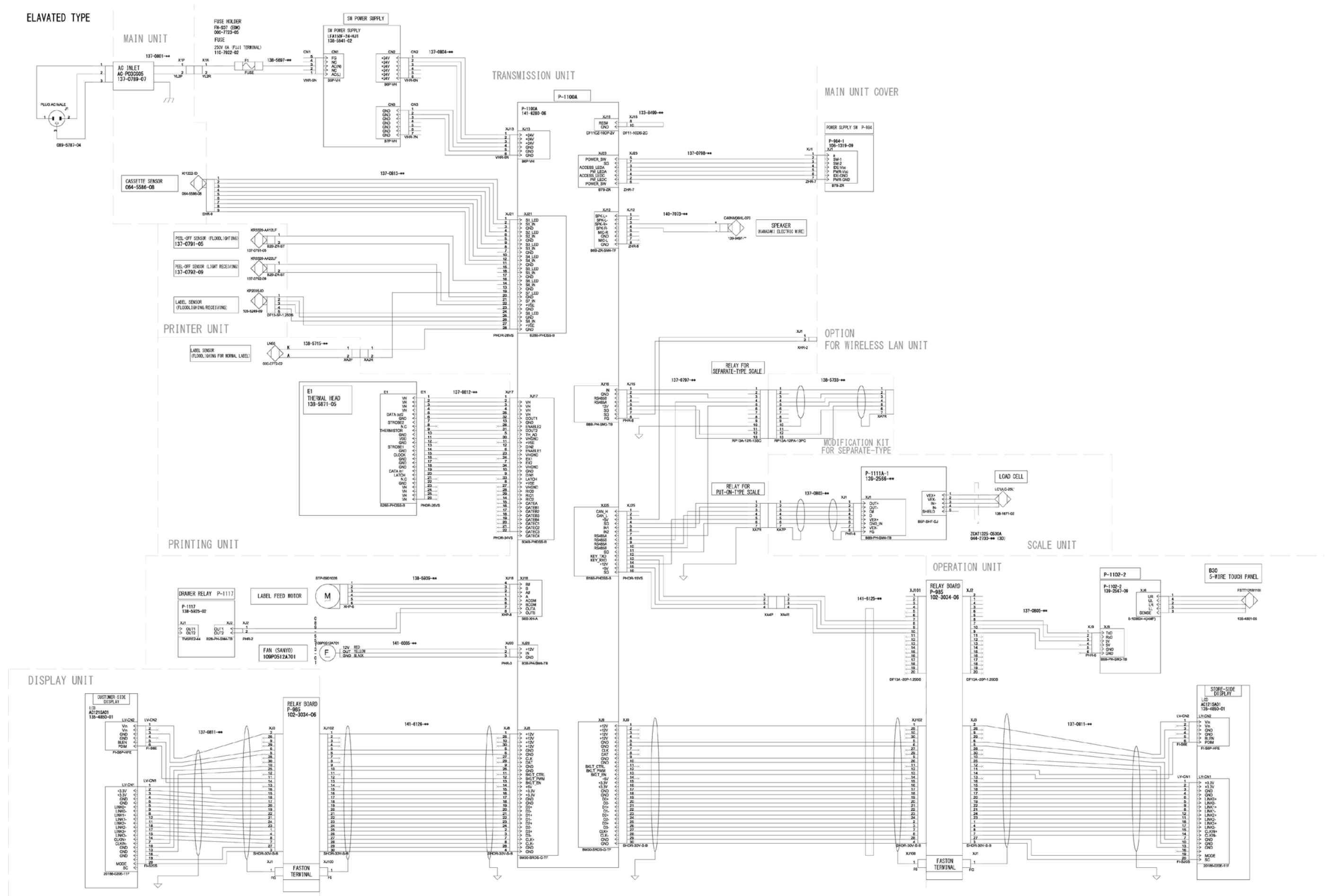
3.1 BLOCK DIAGRAM (BENCH TYPE)



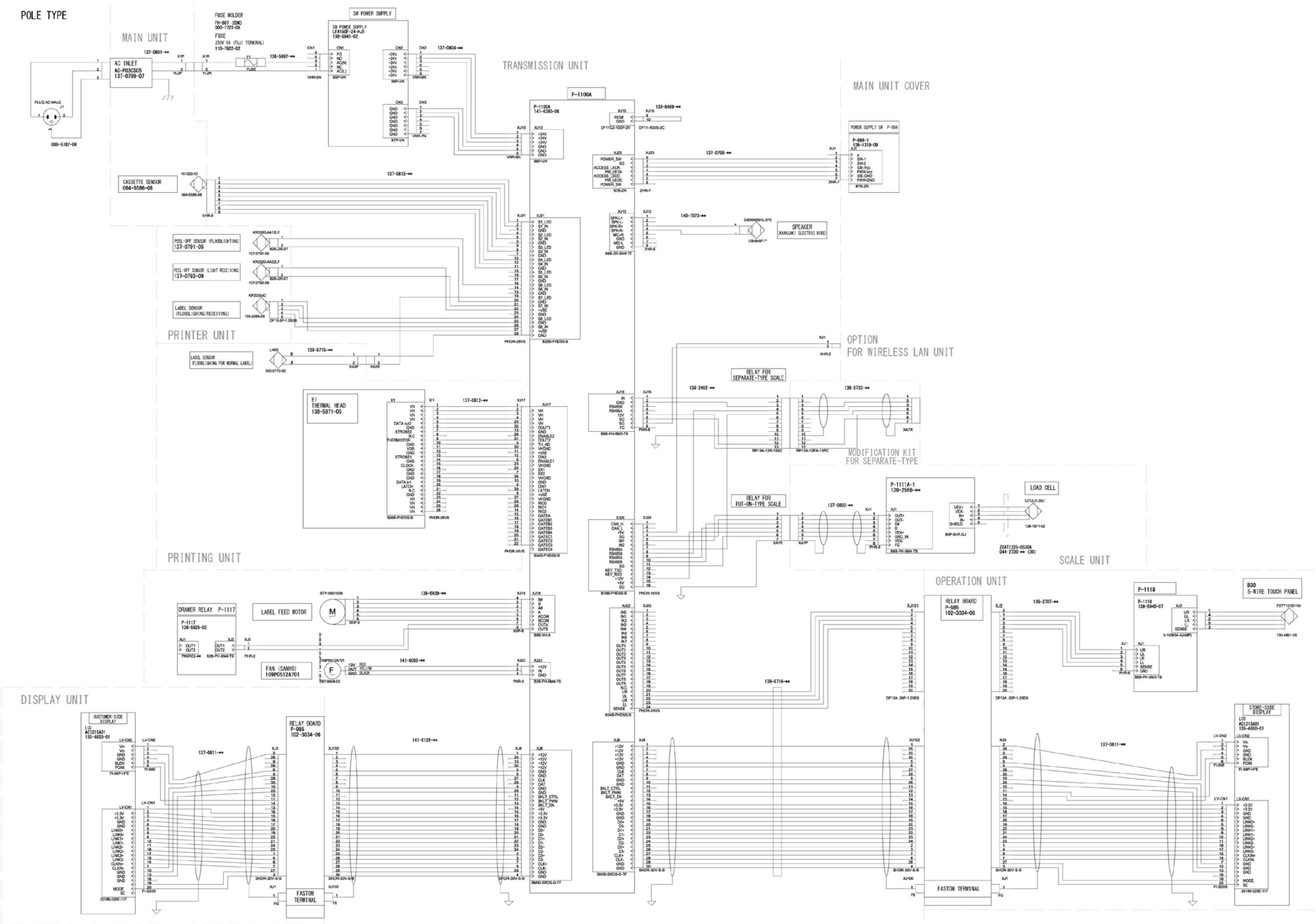
3.2 BLOCK DIAGRAM (LARGE PLATTER TYPE)



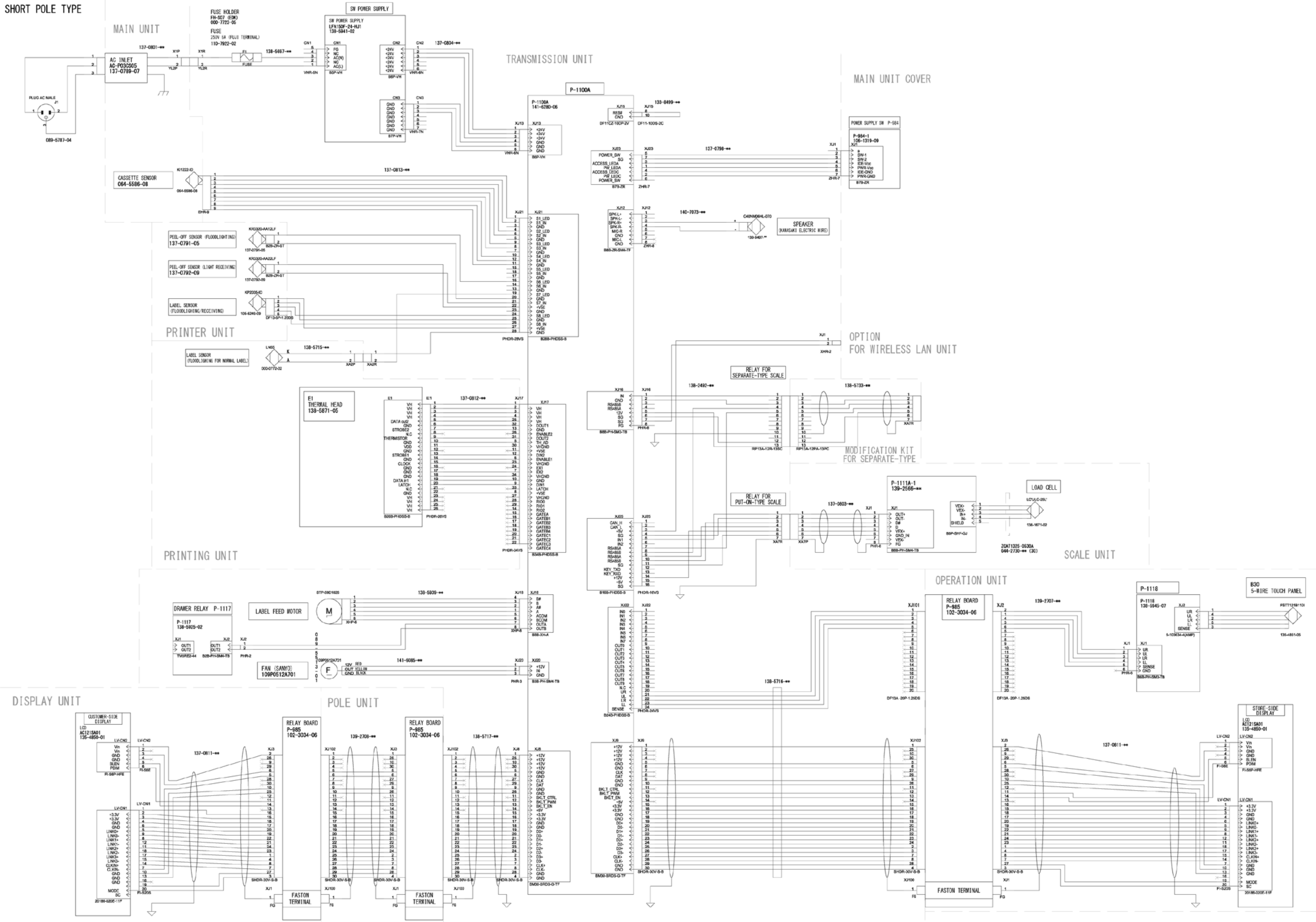
3.3 BLOCK DIAGRAM (ELEVATED TYPE)



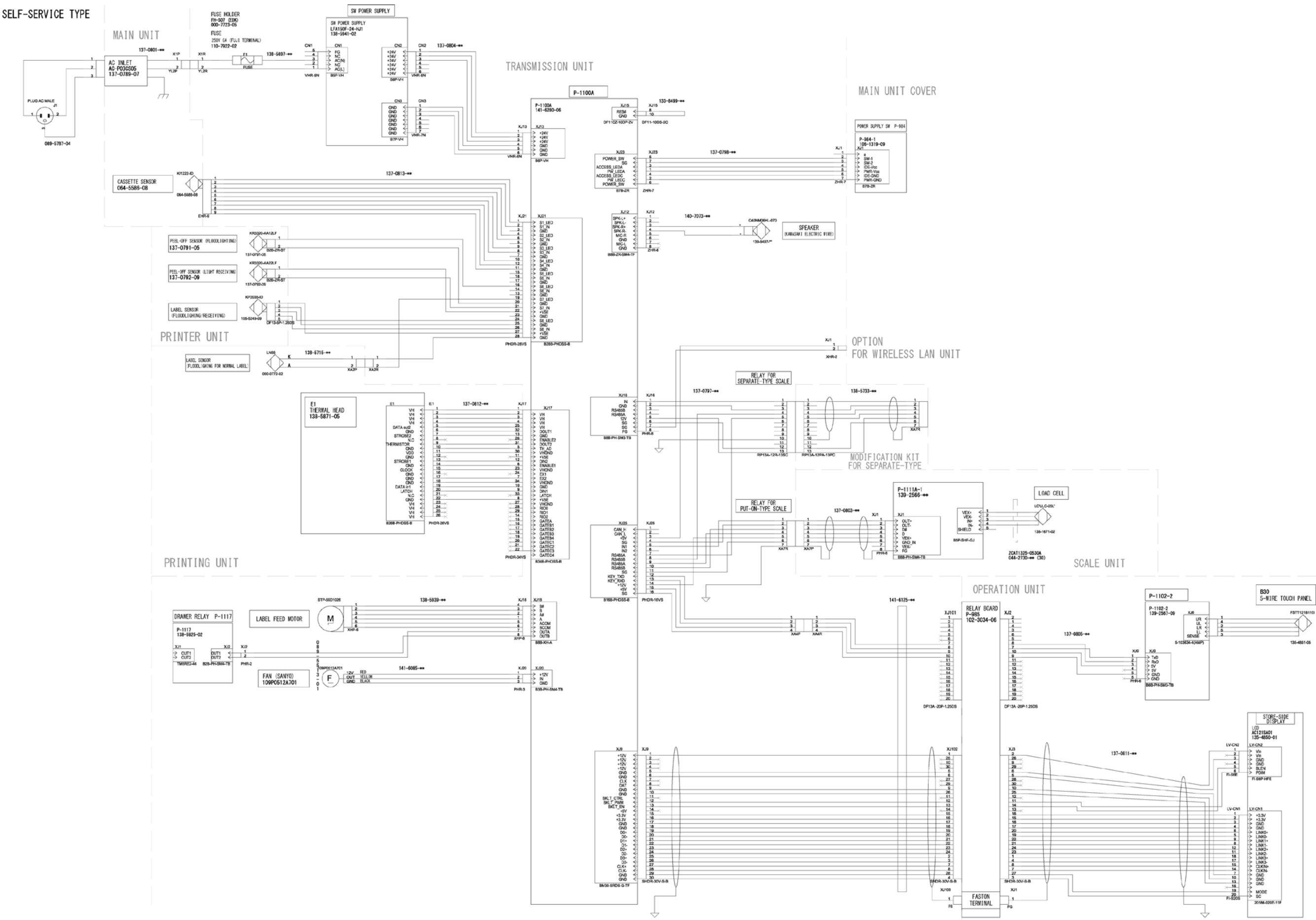
3.4 BLOCK DIAGRAM (POLE TYPE)



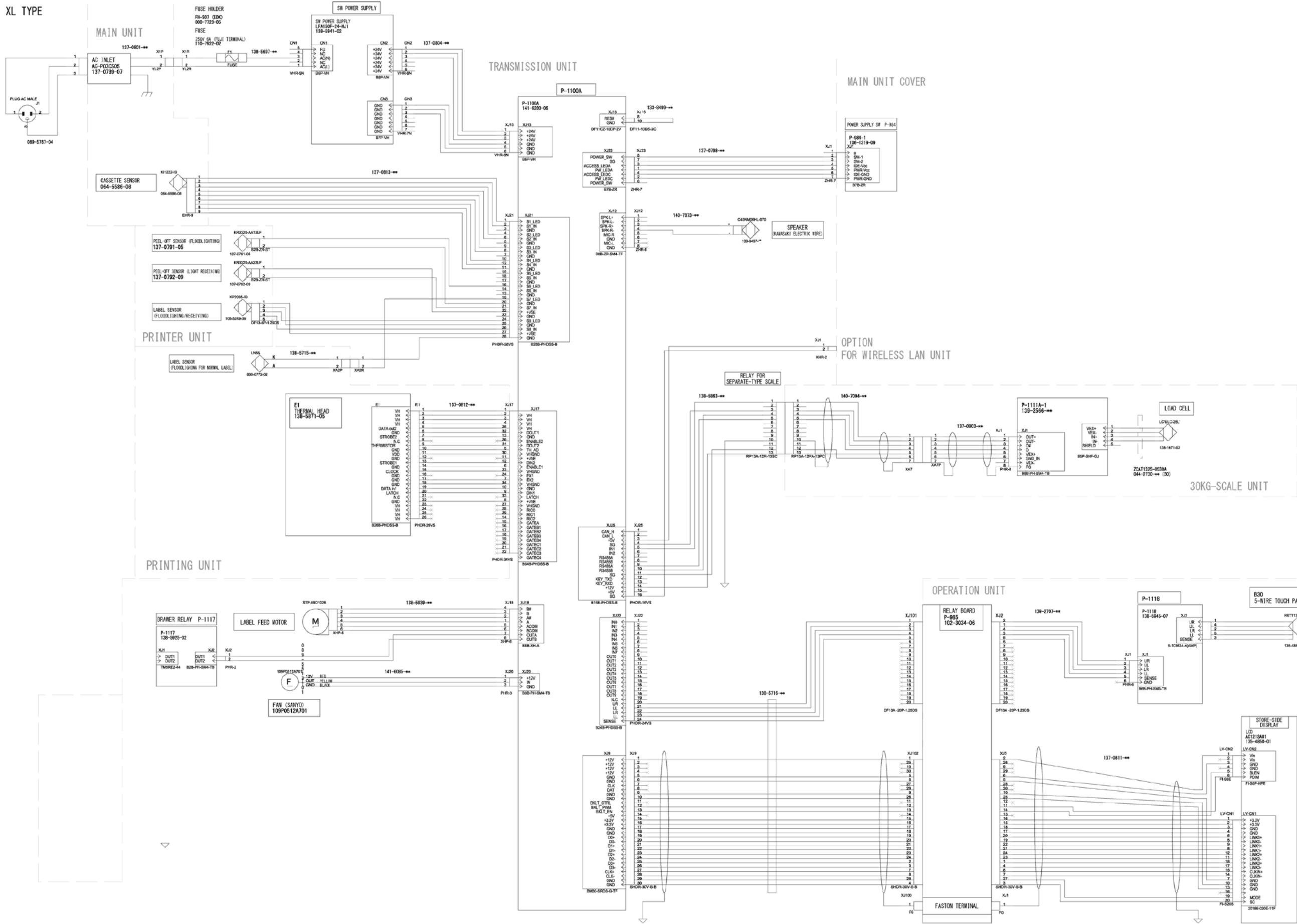
3.5 BLOCK DIAGRAM (SHORT POLE TYPE)



3.6 BLOCK DIAGRAM (SELF-SERVICE TYPE)



3.7 BLOCK DIAGRAM (XL TYPE)



MACHINE DISASSEMBLY

4.1 DISASSEMBLY PROCEDURE FOR EACH TYPE

CAUTION: Make sure to unplug the power cord from the wall outlet before starting the disassembly work.

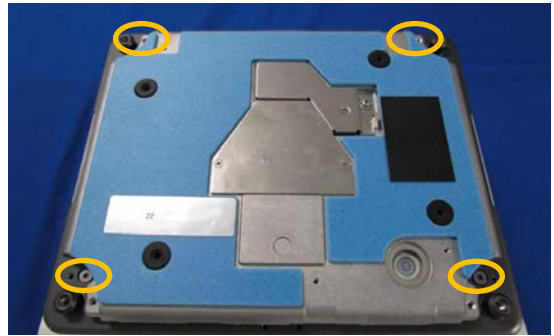
The procedure of this section is based on that of BENCH TYPE. For the CUSTOMER DISPLAY and OPERATION DISPLAY of ELEVATED TYPE, refer to the section 5.2 ELEVATED TYPE.

4.1.1 PLATE UNIT

1. Detach the platter.



2. Remove the four hex screws (3 mm).



3. Hold up the plate unit.



4. Unplug the connector and detach the plate unit.



* Reverse this procedure for assembly.

4.1.2 MAIN UNIT COVER

- 1.** Hold up the display to open the cassette cover.



- 2.** Pull out the cassette unit.



- 3.** Remove two screws securing the hinge.



- 4.** Detach the hinge cover (lower).



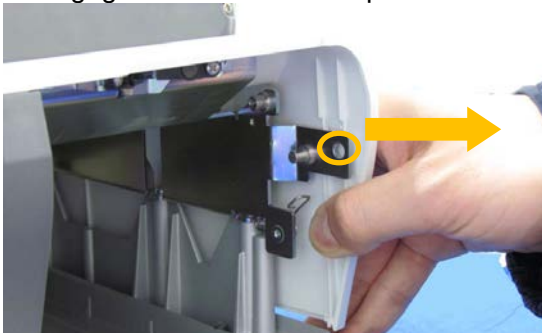
- 5.** Hold down the display to detach the hinge cover (upper).



- 6.** Remove three screws (green) and two TP screws (blue).

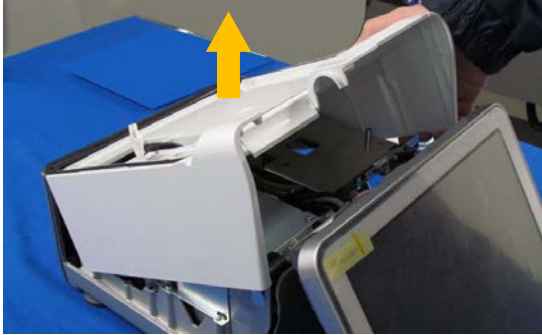


- 7.** Displace the main unit cover rightward to disengage the hook from the plate.



- 8.** Open the left side of the main unit cover with the flat-blade screwdriver, etc.



9. Detach the main unit cover.

* Reverse this procedure for assembly.

4.1.3 OPERATION DISPLAY**1.** Remove two screws of display to detach the hinge cover.**2.** Detach the hinge cover.**3.** Unplug three connectors of display.**4.** Loosen two screws securing the hinge to detach the display unit.

Reverse this procedure for assembly.

4.1.4 USB PORT COVER

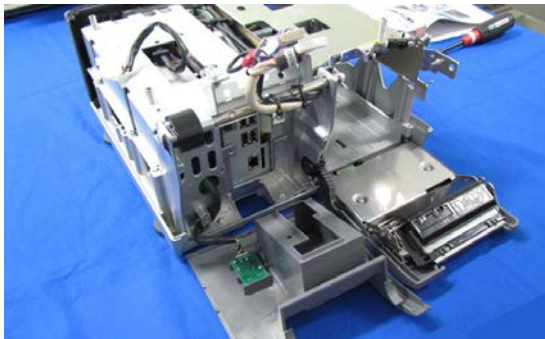
1. Open the USB port door.



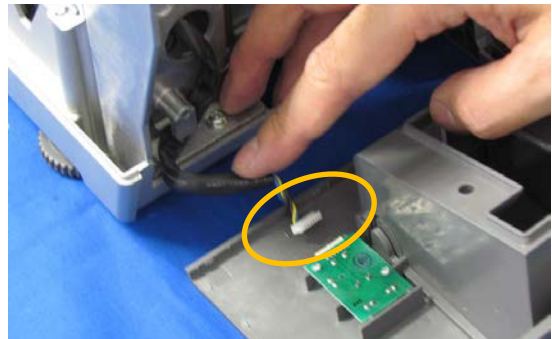
2. Remove the screw securing the USB port cover.



3. Detach the USB port cover.



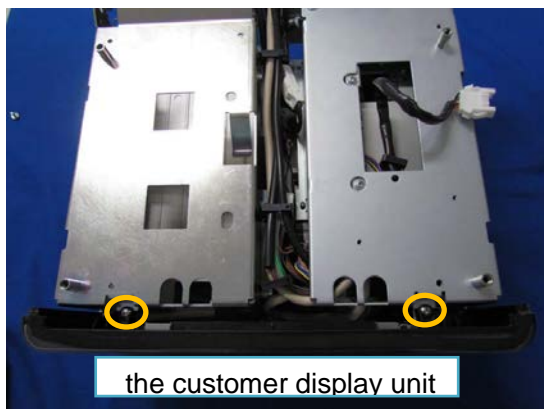
4. Unplug the connector connected to the power switch board.



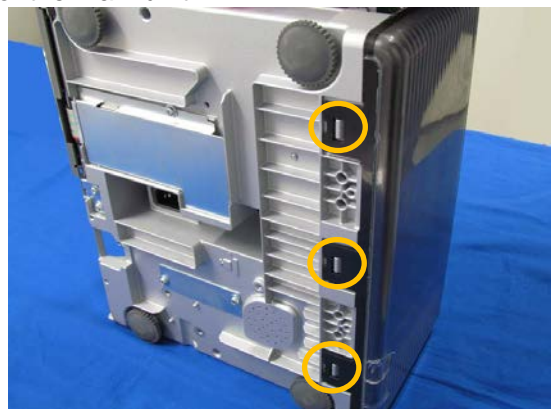
* Reverse this procedure for assembly.

4.1.5 CUSTOMER DISPLAY

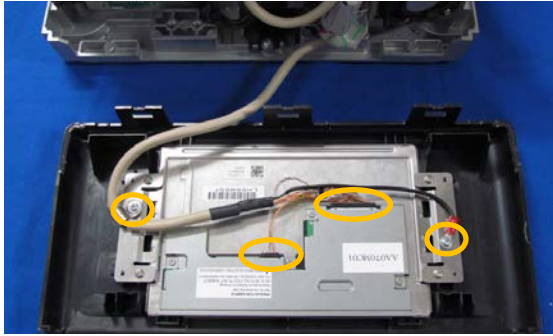
1. Remove two screws.



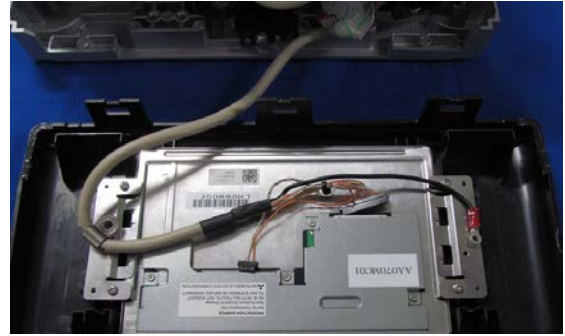
2. Disengage three hooks located on the bottom of the main unit.



- 3.** Remove two screws and unplug two connectors.



- 4.** Detach the customer-side display unit.



- 5.** Remove four screws.



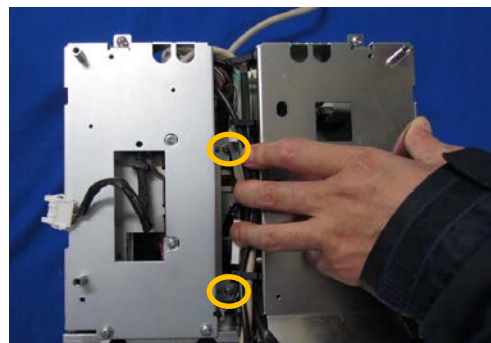
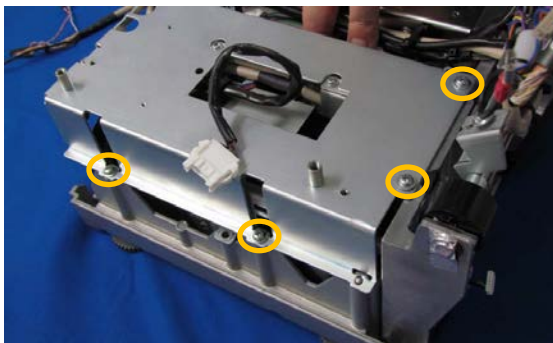
- 6.** Detach the customer-side display panel.



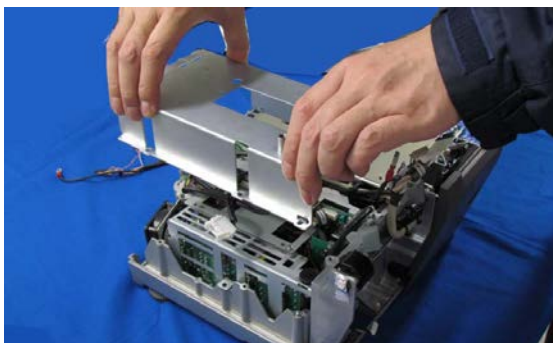
* Reverse this procedure for assembly.

4.1.6 MAIN UNIT (POWER BOARD/MAIN BOARD)

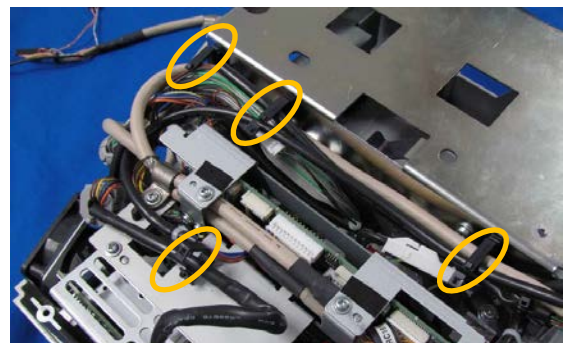
- 1.** Remove six screws securing the main unit cover.



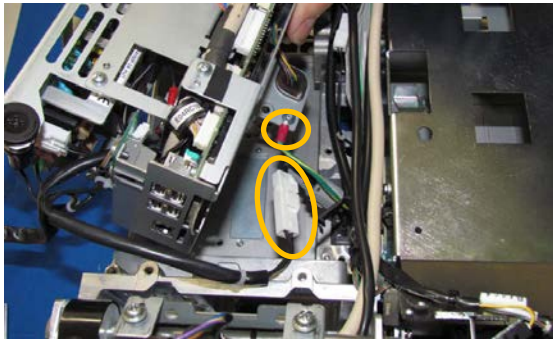
- 2.** Detach the main unit cover.



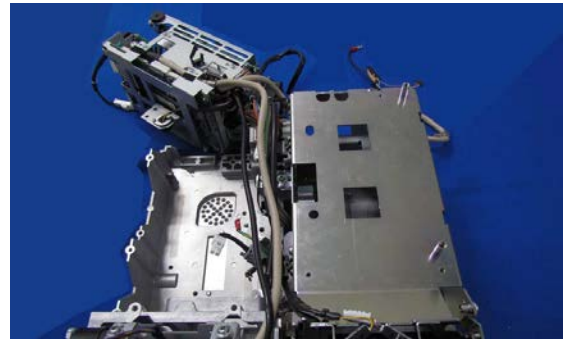
- 3.** Disengage four clamps securing the cable.



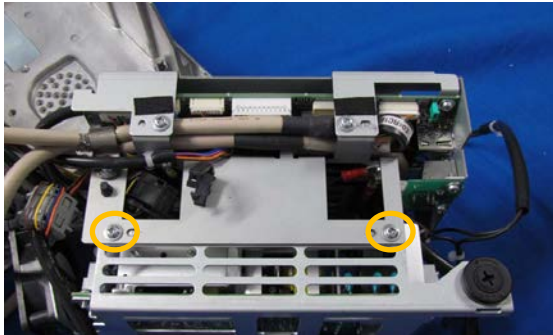
- 4.** Unplug the connector and ground wire.



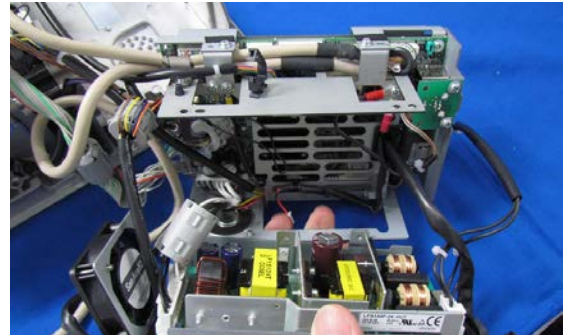
- 5.** Pull out the main unit.



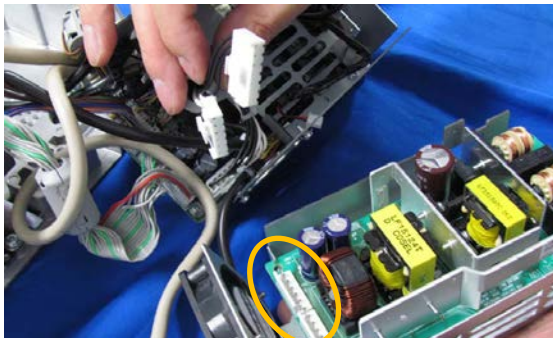
- 6.** Remove two screws securing the power board.



- 7.** Pull out the power board.

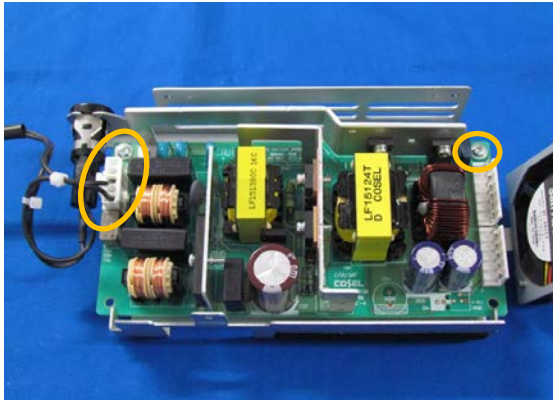


- 8.** Unplug two connectors (CN2 and CN3) connected to the main board.

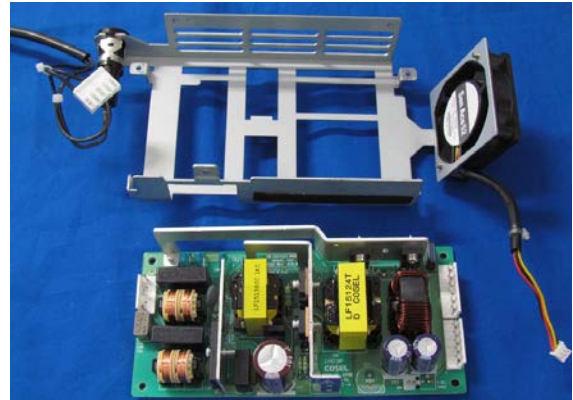


CAUTION: Here you need to disassemble the main board unit to unplug the FAN cable installed on the power board.

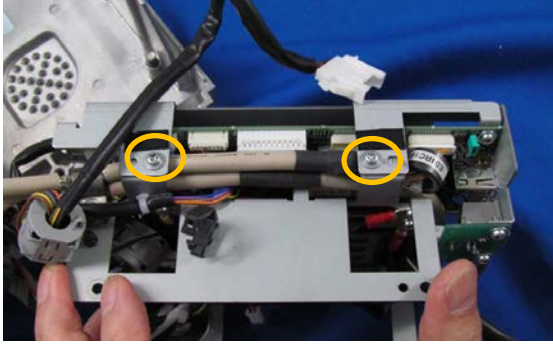
- 9.** Unplug the connector (CN1) connected to the fuse holder and remove two screws.



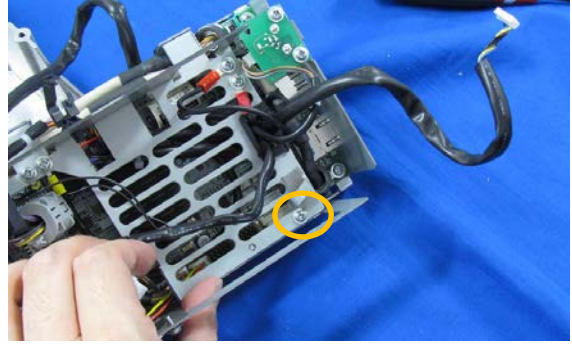
- 10.** Detach the power board.



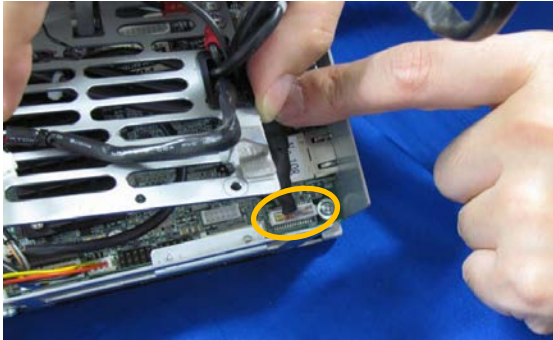
11. Remove two screws securing the frame.



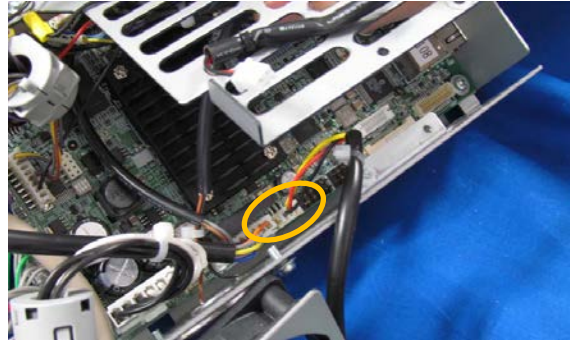
12. Remove the screw securing the frame.



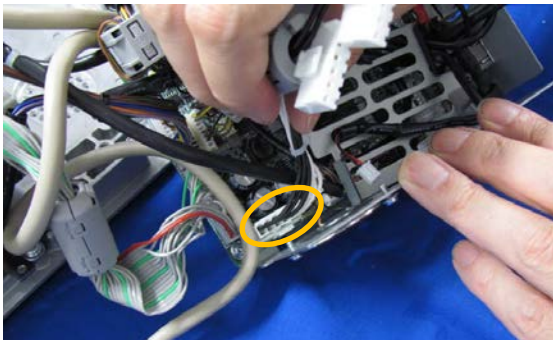
13. Unplug the connector (XJ8) connected to the customer-side display unit.



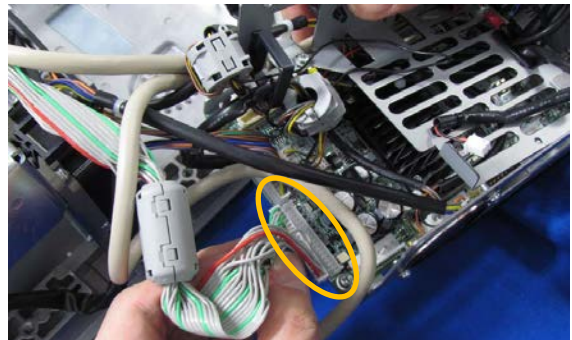
14. Unplug the connector (XJ20) connected to the FAN of the power board.



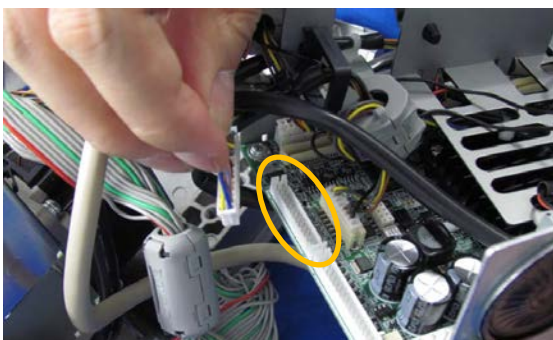
15. Unplug the connector (XJ13) connected to the power board.



16. Unplug the connector (XJ17) connected to the thermal head.



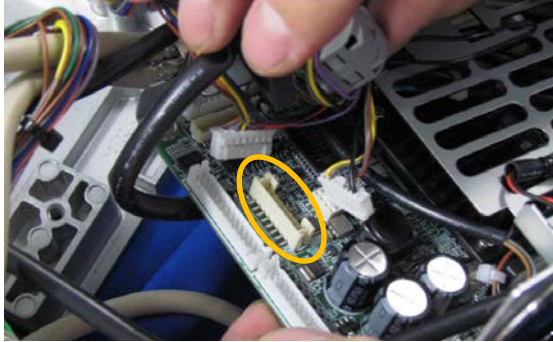
17. Unplug the connector (XJ21) connected to the peel-off sensor, label sensor and cassette sensor.



18. Unplug the connector (XJ25) connected to the scale unit.

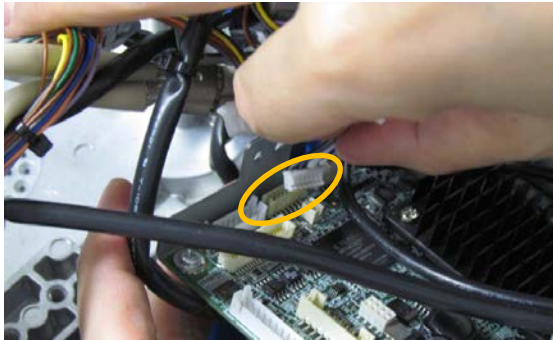


- 19.** Unplug the connector (XJ16) connected to the the terminal for connection with the separate-type scale unit.

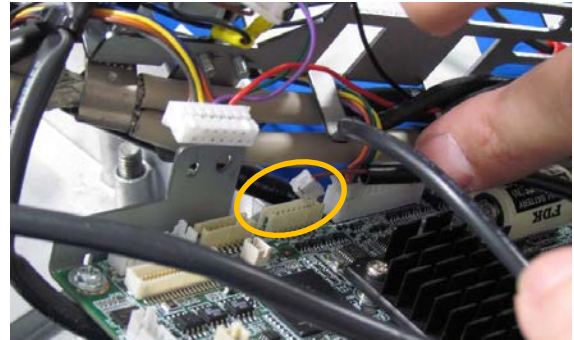


XJ25 and XJ16 are the pair of branch cables.

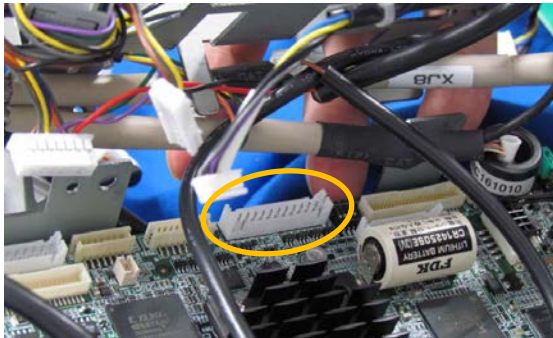
- 20.** Unplug the connector (XJ23) connected to the power switch board.



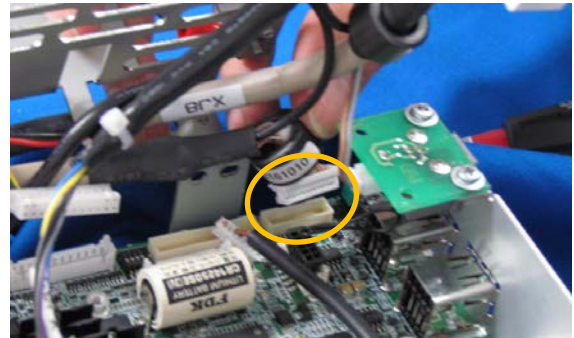
- 21.** Unplug the connector (XJ12) connected to the speaker.



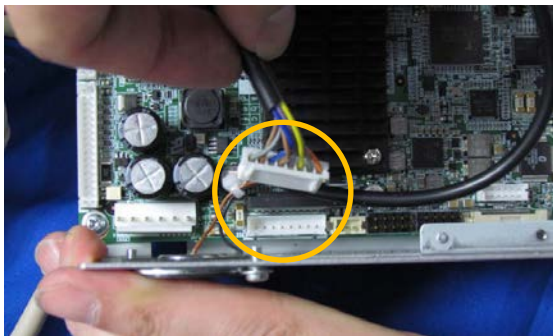
- 22.** Unplug the connector (XJ22) connected to the operation display unit.



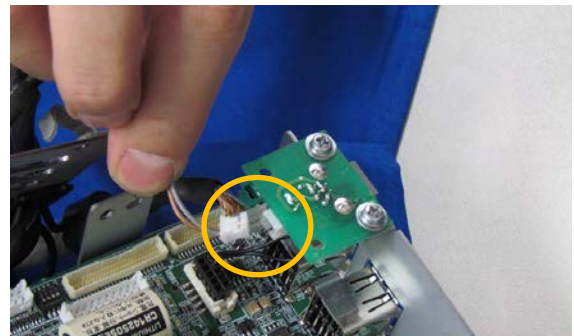
- 23.** Unplug the connector (XJ9) connected to the operation display unit.



- 24.** Unplug the connector (XJ18) connected to the cassette motor unit.



- 25.** Unplug the connector connected to the modular jack board.



- 26.** Detach the main board (remove the screws and detach the frame).

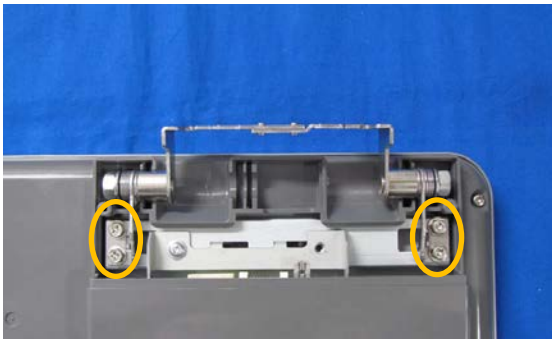


* Reverse this procedure for assembly.

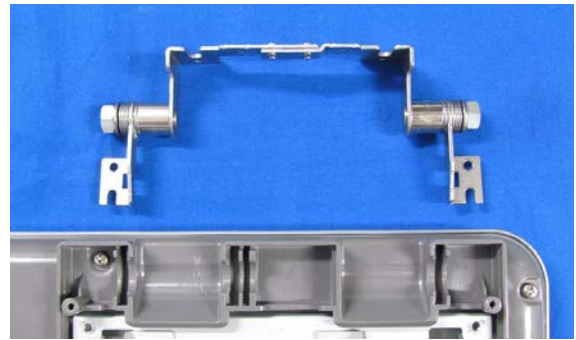
Note: Be sure to route the two-conductor power cable for the RF Option to the bottom of the Power Supply & CPU board unit.

4.1.7 OPERATION DISPLAY

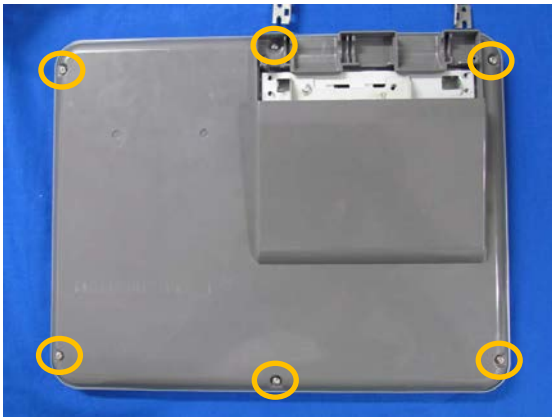
- 1.** Remove four screws securing the hinge.



- 2.** Detach the hinge.



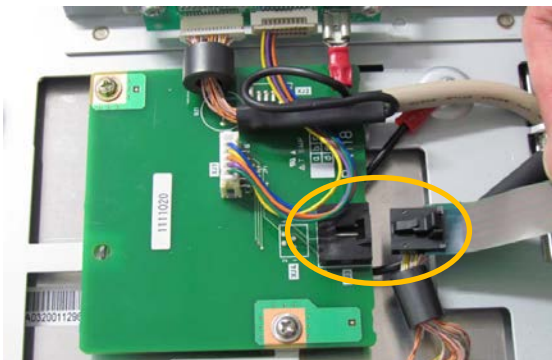
- 3.** Remove six screws securing the display cover.



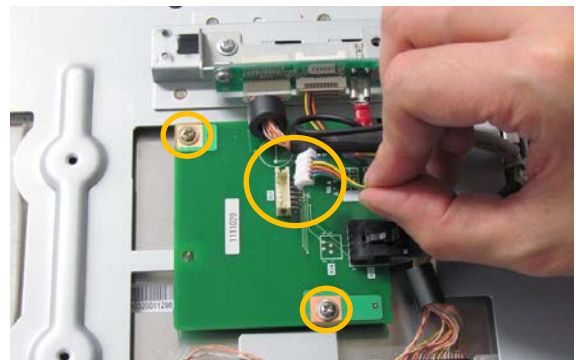
- 4.** Detach the display cover.



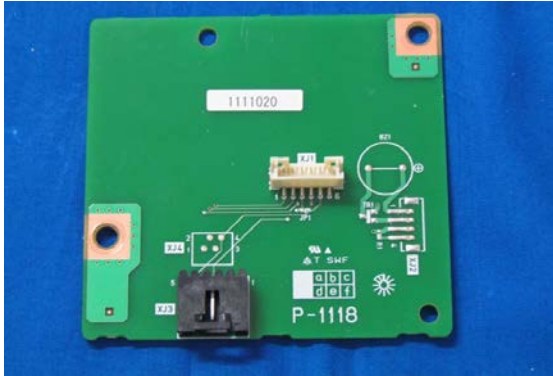
- 5.** Disengage the hook to unplug the connector (XJ3).



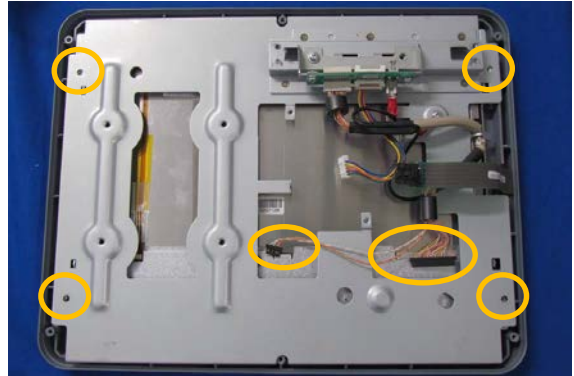
- 6.** Unplug the connector (XJ1) and remove two screws.



7. Detach the board P-1118.



8. Remove two connectors and four screws.



9. Detach the plate on which the relay board is installed.



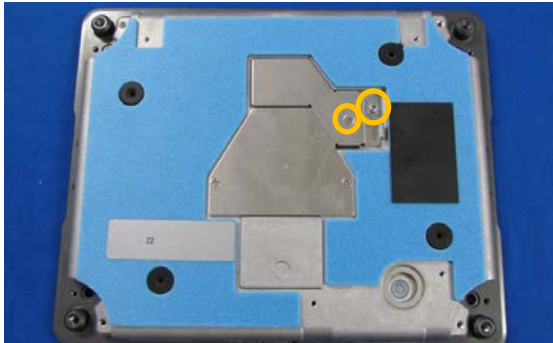
10. Detach the touch panel and LCD.



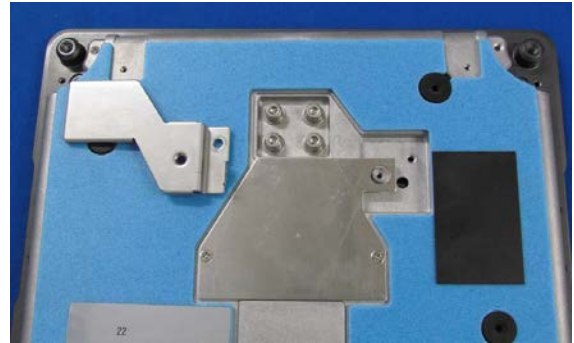
* Reverse this procedure for assembly.

4.1.8 PLATE UNIT

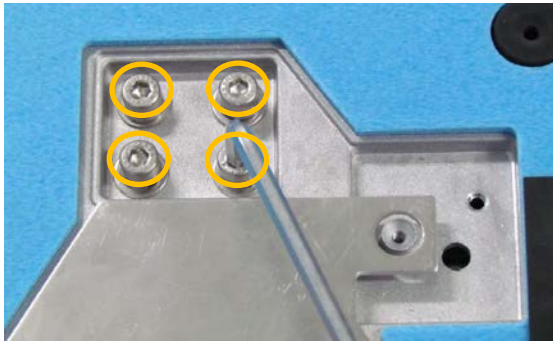
1. Remove the screw and TP screw.



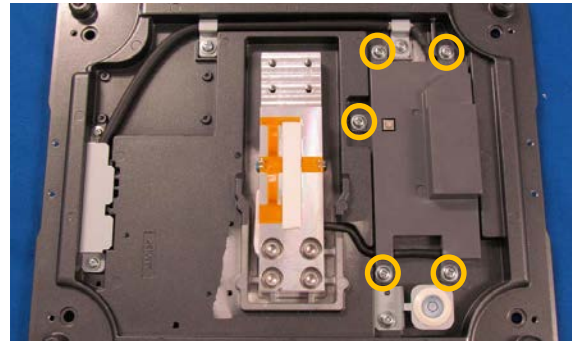
2. Detach the plate.



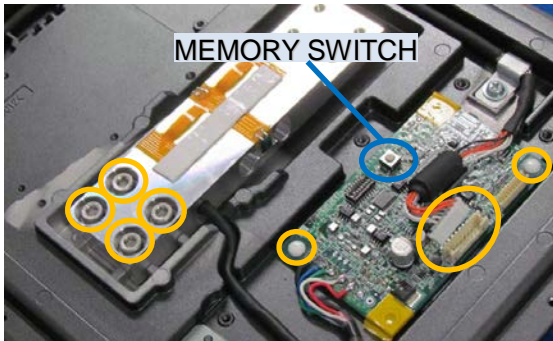
3. Remove four hex screws with the hex wrench (4mm) to detach the plate.



4. Remove five screws to detach the cover.



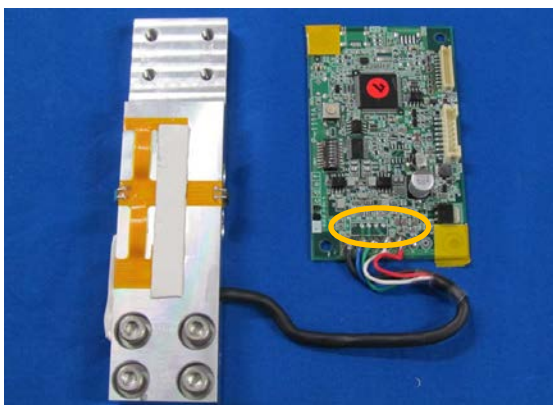
5. Unplug the connector, disengage two hooks and remove four hex screws.



Disengage two hooks with the flat-blade screwdriver, etc.



6. Detach the load cell and scale board P-1111A. Unsolder five wires to detach the P-1111A.



CAUTION: When installing the load cell, make sure to install it in the center of the installation position on the plate.

* Reverse this procedure for assembly.

4.1.9 THERMAL HEAD

1. Push the button to open the cassette door.



2. Pull out the cassette unit.



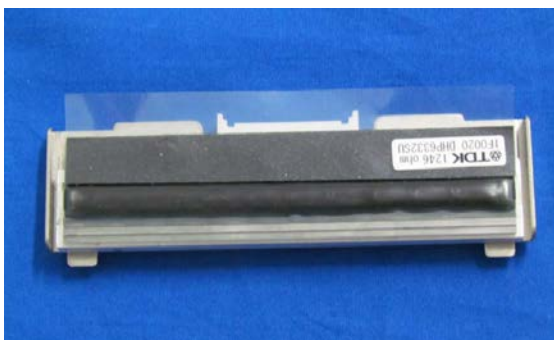
3. Open the thermal head cover.



4. Disengage two hooks to detach the thermal head and then unplug the connector.



5. Detach the thermal head.



Reverse this procedure for assembly.

Note: If necessary use the two 1.5mm allen head set screws to adjust the thermal head alignment for optimal printing.

4.1.10 THERMAL HEAD CABLE

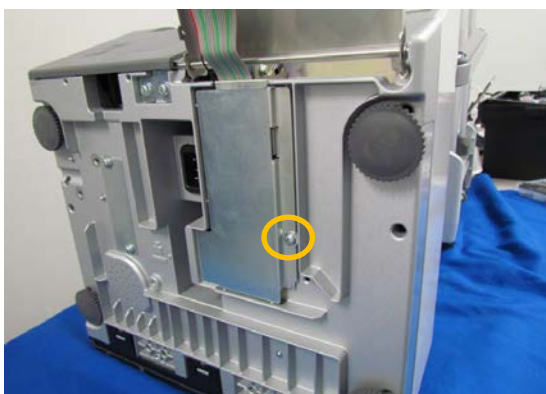
- 1.** Remove two screws securing the cassette door after detaching the thermal head.



- 2.** Detach the cassette cover.



- 3.** Remove the screw located on the bottom of the main unit.



- 4.** Detach the plate.



The thermal head cable is connected to the connector (XJ17) on the main board.

* Reverse this procedure for assembly.

4.2 ELEVATED TYPE

CAUTION: Make sure to unplug the power cord from the wall outlet before starting the disassembly work.

4.2.1 CUSTOMER DISPLAY

- 1.** Remove two screws (the outer two screws) located on the bottom panel on the top of the pole.



- 2.** Detach the cover located on the top of the pole.



- 3.** Remove two screws securing the hinge cover located on the back of the customer-side display.



- 4.** Detach the hinge cover located on the back of the customer-side display.



- 5.** Detach the hinge cover (upper) located on the top of the pole.



- 6.** Detach the hinge cover (lower).



7. Unplug the connector and ground wire.

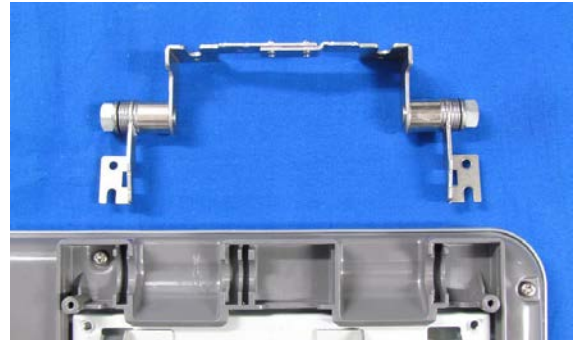
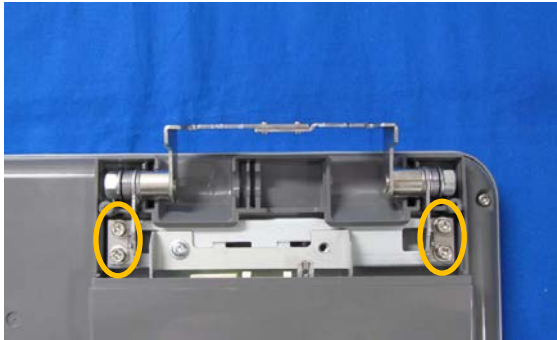


8. Loosen two screws securing the hinge to detach the customer-side display.



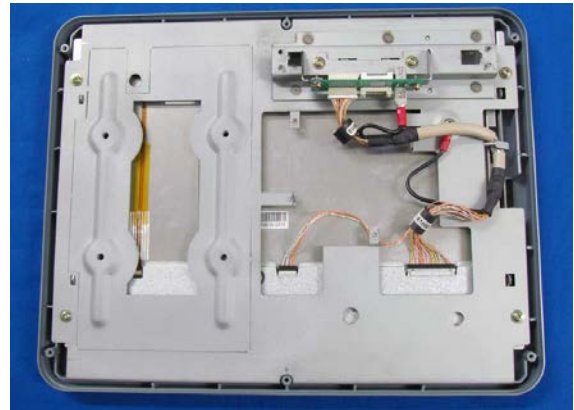
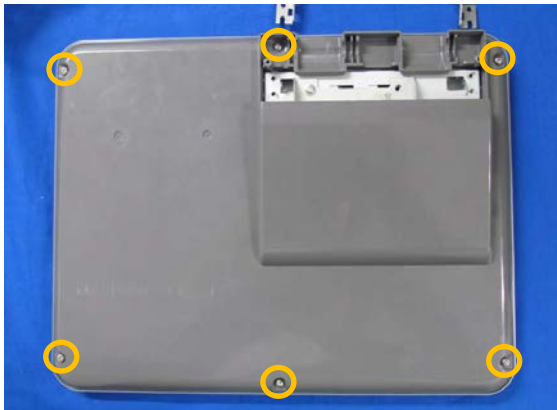
9. Remove four screws securing the hinge.

10. Detach the hinge.



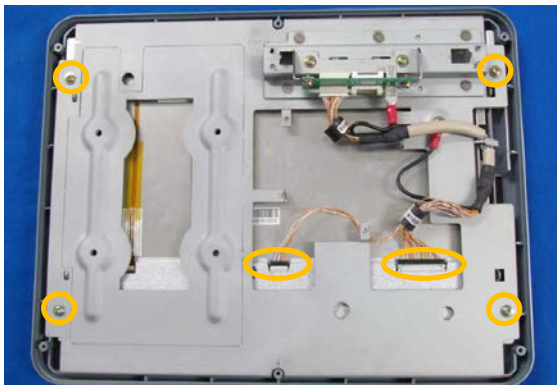
11. Remove six screws securing the display cover.

12. Detach the display cover.



13. Unplug two connectors and remove four screws.

14. Detach the plate on which the relay board is installed.



- 15.** Detach the LCD from the cover.



* Reverse this procedure for assembly.

4.2.2 OPERATION DISPLAY

- 1.** Remove two screws securing the hinge cover located on the back of the operation display.



- 2.** Detach the hinge cover located on the back of the operation display.



- 3.** Detach the hinge cover (upper) located on the top of the pole.



- 4.** Detach the hinge cover (lower).



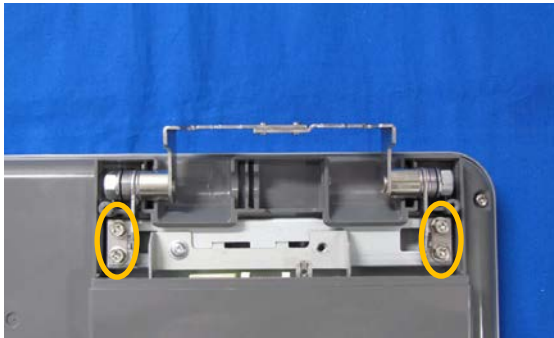
5. Unplug three connectors of display.



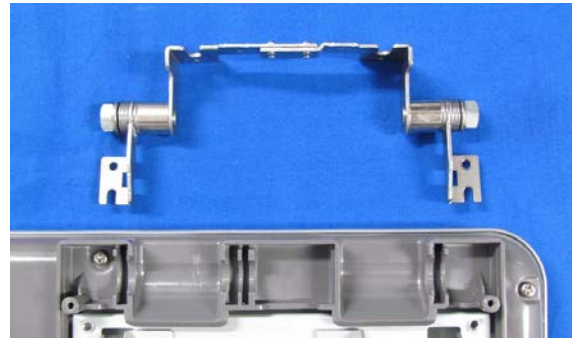
6. Loosen two screws securing the hinge to detach the operation display.



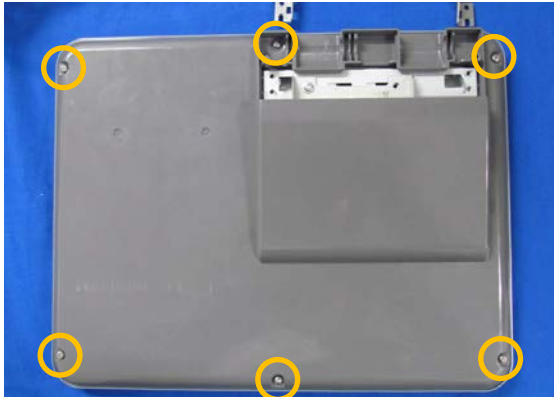
7. Remove four screws securing the hinge.



8. Detach the hinge.



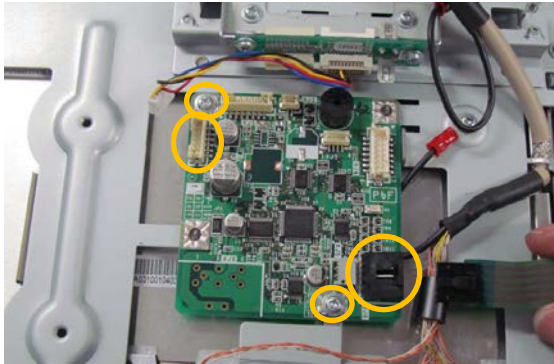
9. Remove six screws securing the display cover.



10. Detach the display cover.



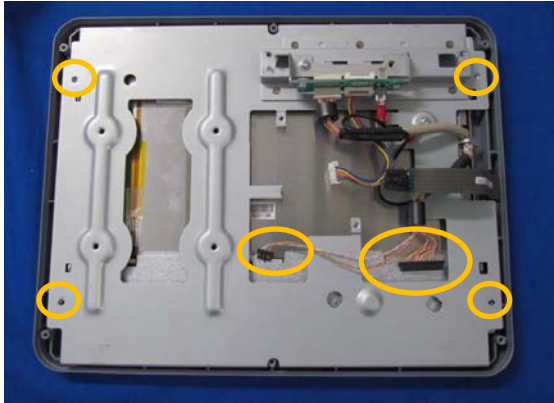
11. Unplug two connectors (XJ6 and XJ9) and remove two screws.



12. Detach the board P1102.



- 13.** Unplug two connectors and remove four screws.



- 14.** Detach the plate on which the relay board is installed.



- 15.** Detach the touch panel and LCD.



* Reverse this procedure for assembly.

CAUTION: During the reassembly work, make sure not to confuse the operation display with the customer-side display.

OPTIONAL UNIT

5.1 OPTION LIST

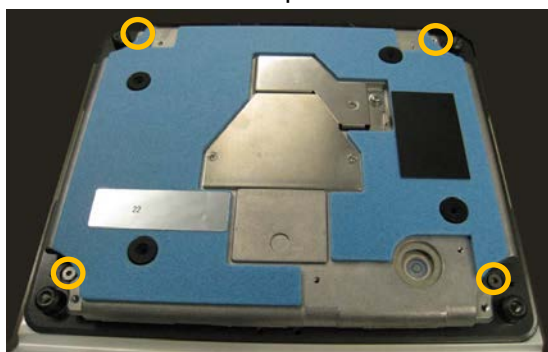
NO.	PART NAME
1	LARGE PLATTER MODIFICATION KIT
2	MODIFICATION KIT FOR SEPARATE-TYPE PLATTER
3	GUIDE PLATTER
4	WIRELESS LAN KIT
5	USB-I2NET CONVERTER
6	USB-DIN8 CONVERTER
7	USB CONVERTER STAND
8	ANTITHEFT COVER FOR USB FLASH DRIVES
9	USB-RS232C CONVERTER
10	STANDARD CASSETTE
11	CASSETTE WITHOUT BACKING PAPER

5.2 OPTION INSTALLATION

CAUTION: Make sure to unplug the power cord from the wall outlet before starting the installation work.

5.2.1 LARGE PLATTER MODIFICATION KIT

- 1.** Detach the platter and remove four hex screws located on the plate unit.



- 2.** Hold up the plate unit.



- 3.** Unplug the connector and detach the platter.

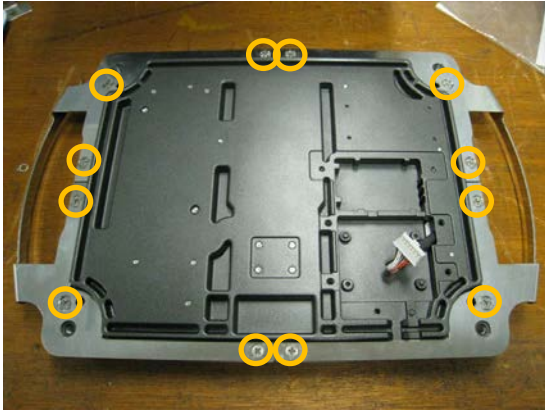


- 4.** Attach two frames to the bottom of the platter.

CAUTION: Make sure of the platter guide direction.



- 5.** Tighten six screws to secure the each frame.



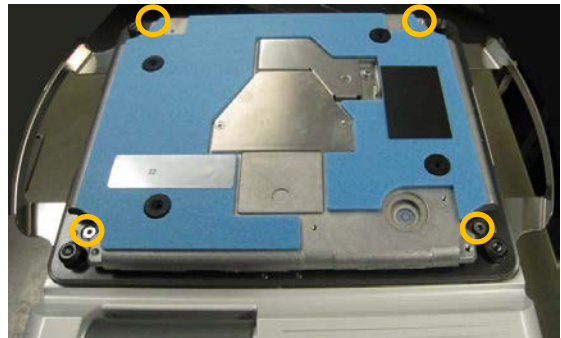
- 6.** Connect the cable.



- 7.** When running the cable, make sure to get it through the storage hole of the main unit.



- 8.** Tighten four hex screws.

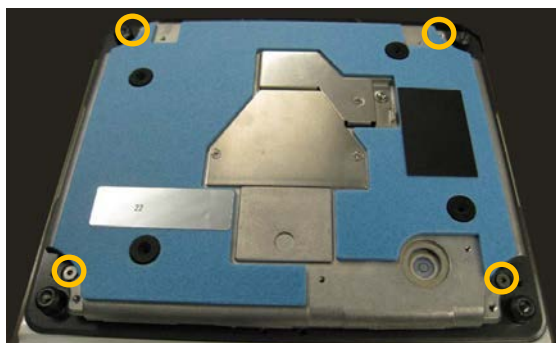


- 9.** Put the large platter.
The image of the large platter shown in the photo differs from the actual product.



5.2.2 MODIFICATION KIT FOR SEPARATE-TYPE PLATTER

- 1.** Detach the platter and remove four hex screws of the scale unit.



- 2.** Hold up the platter.



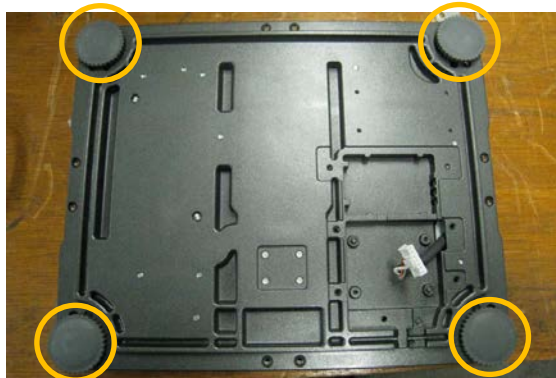
- 3.** Unplug the connector and detach the platter.



- 4.** Tighten four screws to attach the main unit cover supplied with the kit.



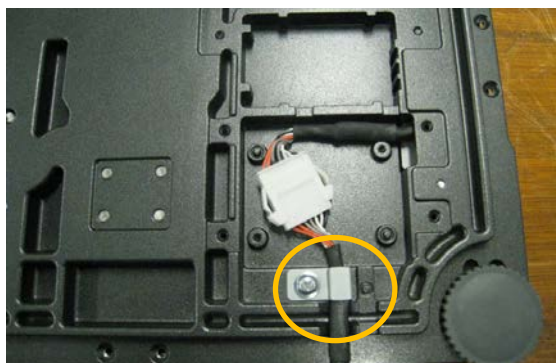
- 5.** Attach four level adjusting feet supplied with the kit on the bottom of the platter.



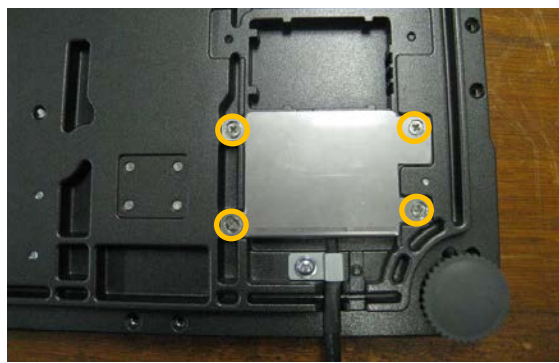
- 6.** Connect the scale cable supplied with the kit to the connector of the platter.



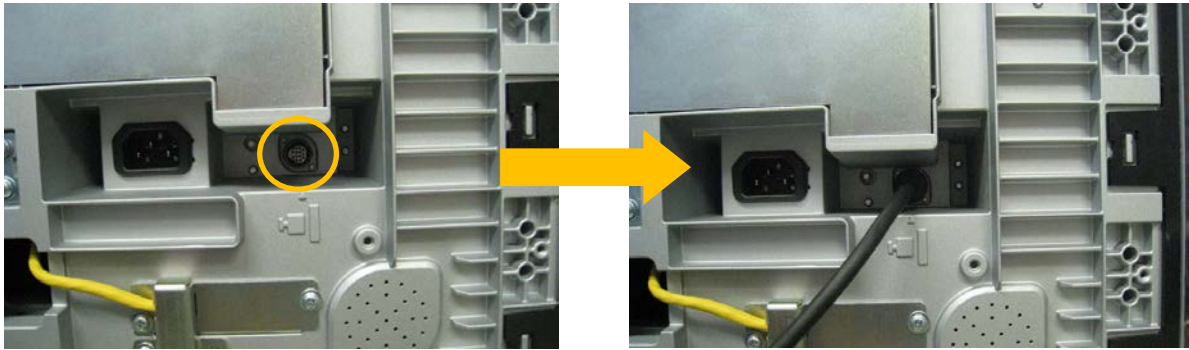
- 7.** Clamp the scale cable with the plate and tighten the screw to secure the plate.



- 8.** Cover the connected portion with the plate and tighten four screws to secure the plate.

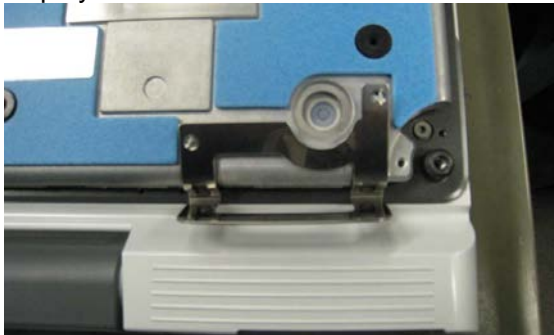


- 9.** Connect the scale cable to the connector located on the bottom of the main unit.

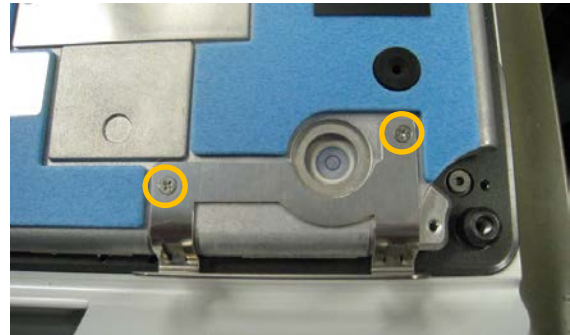


5.2.3 GUIDE PLATTER

- 1.** Detach the platter and attach the guide platter on the right side of the operation display.



- 2.** Tighten two screws supplied with the kit to secure the guide platter.



- 3.** Attach the platter.



5.2.4 WIRELESS LAN KIT

CAUTION: Unplug the power cord to avoid damage to the RF Option and Uni-9 Power Supply.

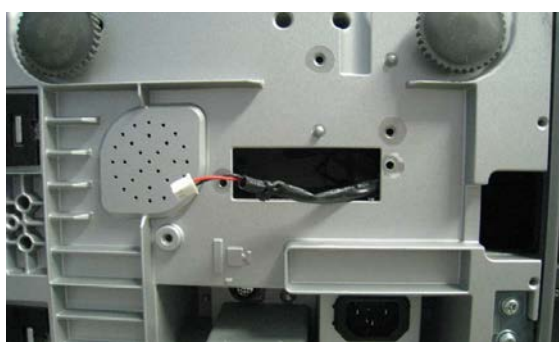
1. Remove two screws securing the plate located on the bottom of the main unit.



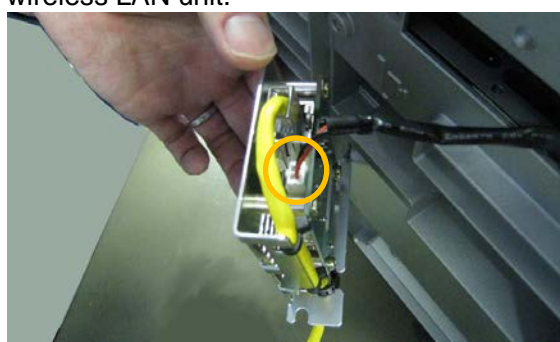
2. Detach the plate.



3. Pull out the cable from inside the main unit.



4. Connect the cable to the connector of the wireless LAN unit.

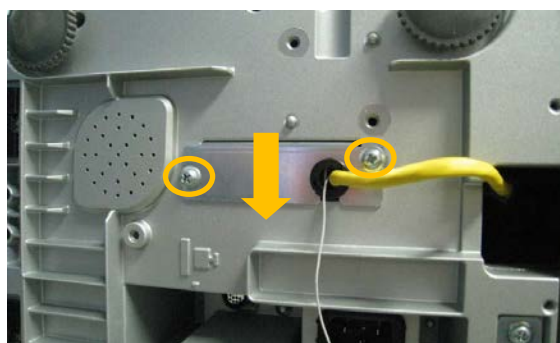


5. Insert the wireless LAN unit into the main unit.



6. Tighten two screws to secure the wireless LAN unit.

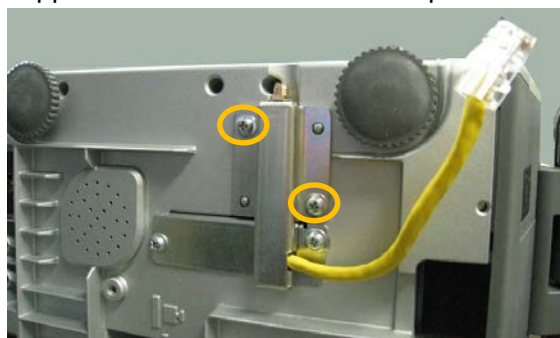
Mount the unit as far as possible to the right side of the scale to provide clearance from the power supply.



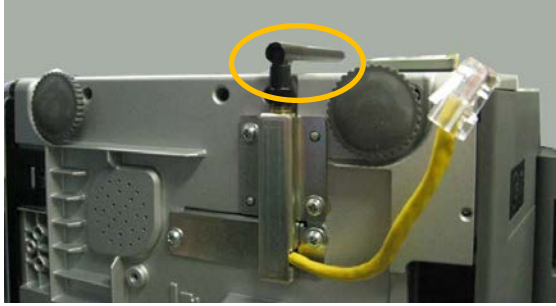
7. Install the antenna jack (the jack connected with the white cable) on the antenna cover plate.



8. Attach the antenna cover plate to the bottom of the main unit and tighten two screws supplied with the kit to secure the plate.



- 9.** Connect the antenna to the antenna jack.



- 10.** Connect the LAN cable (yellow) to the LAN port located on the front of the main unit.



5.2.5 USB-I2NET CONVERTER

- 1.** Connect the USB cable of the converter to the USB port located on the front of the main unit.



- 2.** Run the cable along the guide on the bottom of the main unit to prevent the cable from being messed up.



5.2.6 USB-DIN8 CONVERTER

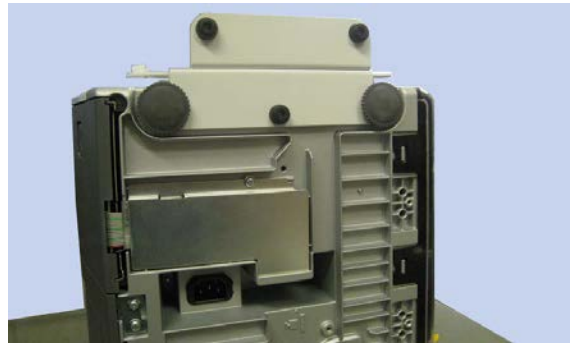
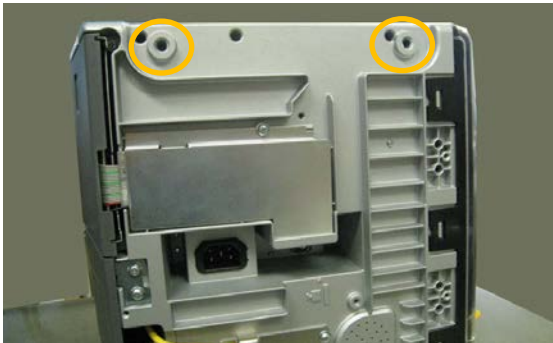
1. Connect the USB cable of the converter to the USB port located on the front of the main unit.
2. Run the cable along the guide on the bottom of the main unit to prevent the cable from being messed up.



5.2.7 USB CONVERTER STAND

1. Detach two level adjusting feet on one side located on the bottom of the main unit (regardless of right or left side).
2. Hold the converter stand between the level adjusting feet and the bottom panel of the main unit to secure the stand.

CAUTION: Attaching the stand never affect the main unit balance.



3. Remove the magnet of each USB converter and tighten two screws to secure the converter to the converter stand.

4. Two screw holes for the attachment of each converter

This photo shows the USB converter installed on the stand.



5.2.8 ANTITHEFT COVER FOR USB FLASH DRIVES

1. Open the USB port door on the front of the main unit and remove the screw.
2. Attach the antitheft cover for the USB flash drives and tighten the screw to secure the cover.



5.2.9 USB-RS232C CONVERTER

1. Connect the USB cable of the converter to the USB port located on the front of the main unit.



5.2.10 STANDARD CASSETTE

1. Replacement cassette (with the backing paper)



5.2.11 CASSETTE WITHOUT BACKING PAPER

1. Replacement cassette (without the backing paper)



memo



Design and specifications are subject to change without notice.

44 SANNO-CHO, SHOGOIN, SAKYO-KU
KYOTO, 606-8392 JAPAN
PHONE: 81-75-771-4141
FACSIMILE: 81-75-751-1634
URL: <http://www.ishida.com>
