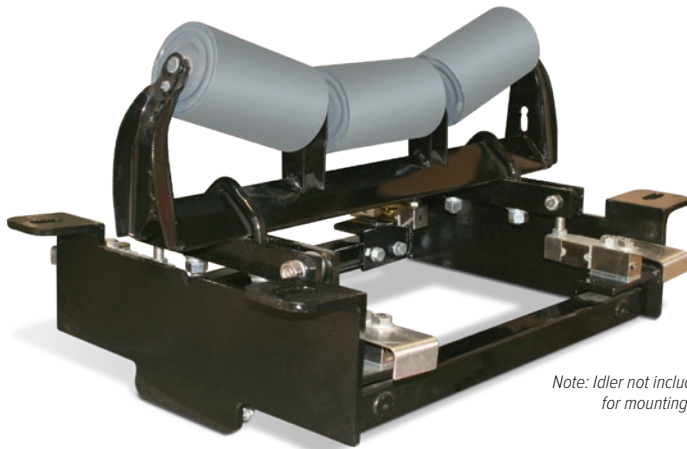


BCi Belt Scale Weigh Frame

In-motion Belt Scale System



Note: Idler not included. Customer is responsible for mounting idler to weigh frame.

Standard Features

- Fits standard conveyors using CEMA-C idlers
- No moving parts
- Four shear laterally opposed shear beam load cells
- Fabricated with heavy gauge steel
- Minimal conveyor modifications required for installation

Applications

- Mining, quarries, bulk material blending, process control, utilities, truck/barge/rail loading and retrofit

Specifications

Conveyor Widths:

18 to 72 in

Capacity:

Up to 10,000 tons per hour

Belt Speed:

Up to 600 feet per minute

Accuracy Guidelines:

Guidelines assume clean belt with automatic tensioning system. Accuracy guidelines are typical. System accuracy may vary depending on environmental influences.

System Accuracy:

Single to two idler system: 0.5% to 1% total error

Part Number/Price

Part #	Description	Est. Belt Width	Capacity	Price
Mild Steel Weigh Frames				
94968	24 in weigh frame	18 in	500 lb	Consult
95208	30 in weigh frame	24 in	500 lb	Consult
95209	36 in weigh frame	30 in	500 lb	Consult
95210	42 in weigh frame	36 in	500 lb	Consult
95211	48 in weigh frame	42 in	500 lb	Consult
95212	54 in weigh frame	48 in	500 lb	Consult
96717	60 in weigh frame	54 in	1,000 lb	Consult
96718	66 in weigh frame	60 in	1,000 lb	Consult
96719	72 in weigh frame	66 in	1,000 lb	Consult
Consult	Light-capacity weigh frames			Consult
Stainless Steel Weigh Frames				
110839	24 in weigh frame	18 in	500 lb	Consult
105246	30 in weigh frame	24 in	500 lb	Consult
110841	36 in weigh frame	30 in	500 lb	Consult
110842	42 in weigh frame	36 in	500 lb	Consult
110843	48 in weigh frame	42 in	500 lb	Consult
110844	54 in weigh frame	48 in	500 lb	Consult
110845	60 in weigh frame	54 in	500 lb	Consult
110846	66 in weigh frame	60 in	500 lb	Consult
110847	72 in weigh frame	66 in	500 lb	Consult
Consult	Light-capacity weigh frames			Consult
Weigh Frame Accessories				
126282	V-bolt for 3 in angle iron base idlers set of 2			Consult
126283	V-bolt for 4 in angle iron base idlers set of 2			Consult

Please complete the Belt Scale Questionnaire on page 159 to obtain a quote

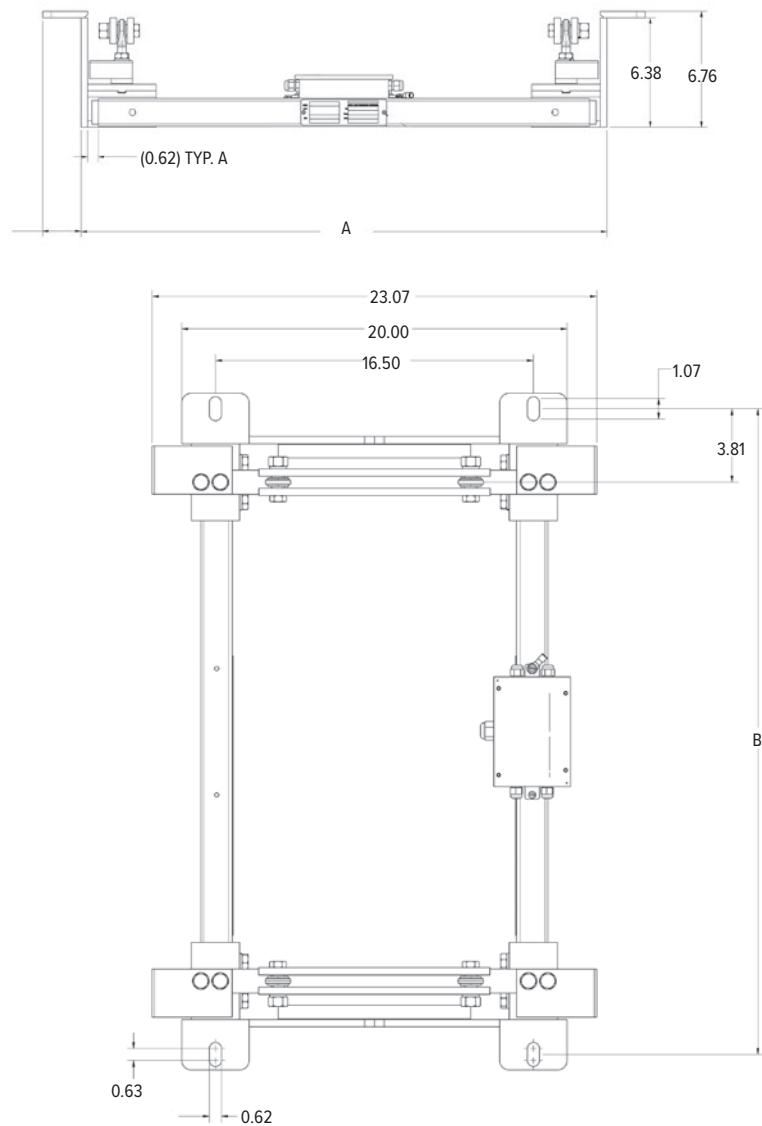
BCi Belt Scale Weigh Frame

In-motion Belt Scale System

Dimensions

Part Number	A	B
Mild Steel		
94968	24.00 in	27.50 in
95208	30.00 in	33.50 in
95209	36.00 in	39.50 in
95210	42.00 in	45.50 in
95211	48.00 in	51.50 in
95212	54.00 in	57.50 in
96717	60.00 in	63.50 in
96718	66.00 in	69.50 in
96719	72.00 in	75.50 in

Part Number	A	B
Stainless Steel		
110839	24.00 in	27.50 in
105246	30.00 in	33.50 in
110841	36.00 in	39.50 in
110842	42.00 in	45.50 in
110843	48.00 in	51.50 in
110844	54.00 in	57.50 in
110845	60.00 in	63.50 in
110846	66.00 in	69.50 in
110847	72.00 in	75.50 in



Note: Cables on drawings removed for clarity. Idler mounting hardware is not included in weigh frame; see idler mounting bolts above.

BELT SCALES