



Picture is a representation of actual product.

Approvals

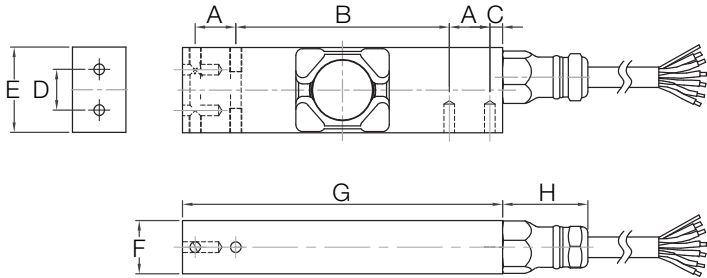


Order Information

| Load Rating | Part # | Est. Weight | Price   |
|-------------|--------|-------------|---------|
| 20 kg       | 202693 | 3 lb        | Consult |
| 50 kg       | 202694 | 3 lb        | Consult |
| 100 kg      | 202695 | 3 lb        | Consult |

Dimensions

| Rated Capacity | A    | B     | C   | D    | E    | F    | G     | H    |
|----------------|------|-------|-----|------|------|------|-------|------|
| kg/mm          |      |       |     |      |      |      |       |      |
| 20 to 100      | 19.0 | 100.0 | 6.0 | 19.1 | 40.0 | 25.0 | 150.0 | 40.0 |



Interchangeable Products

RICE LAKE WEIGHING SYSTEMS

RLPWM15HE..... page 154

HBK®

PW15AH\* ..... page 230

\*350 Ohm

Specifications

Full Scale Output:

2 mV/V

Output Resistance:

960 (± 50) ohm

Input Resistance:

1100 (± 50) ohm

Material:

Stainless Steel

Temperature:

Compensated:

14 °F to 104 °F (-10 °C to 40 °C)

Operating:

0 °F to 150 °F (-18 °C to 65 °C)

Seal Type:

Hermetically sealed, IP69K

Safe Overload:

150% full scale

Rated Excitation:

5 to 10 VDC

Combined Error:

0.02% full scale

Insulation Resistance:

> 5,000 megohm

Cable Length:

3 m

Color Code:

Green +Excitation

Black -Excitation

White +Signal

Red -Signal

Blue +Sense

Brown -Sense

Yellow Shield

Max Platform Size:

500 × 400 mm

Warranty:

One-year limited

Approvals:

NTEP

OIML

FM