



Picture is a representation of model 3211

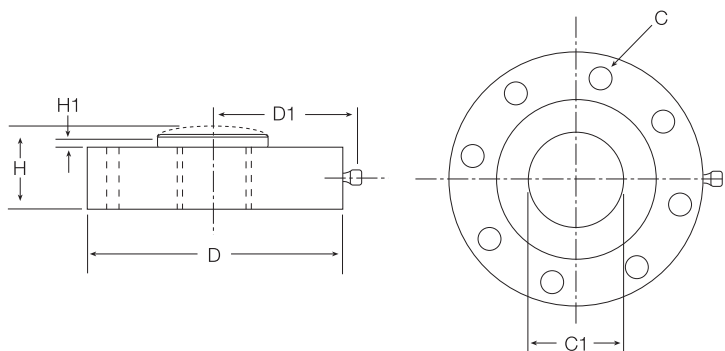
Order Information

Load Rating	Part #	Est. Weight	Price
Model 3211			
5,000 lb	36140	5 lb	Consult
10,000 lb	36141	5 lb	Consult
Model 3221			
25,000 lb	36142	8 lb	Consult
50,000 lb	36143	8 lb	Consult
Model 3231			
100,000 lb	36144	10 lb	Consult

Consult factory for load cell bases

Dimensions

Rated Capacity	C	C1	D	D1	H	H1
lb/in						
5,000 to 10,000	0.28 dia 8 holes	1.34	4.12	2.56	1.37	0.12
25,000 to 50,000	0.34 dia 4 holes	1.57	4.75	2.87	1.75	0.12
100,000	0.47 dia 12 holes	3.12	7.50	4.25	2.25	0.25



Specifications

Full Scale Output:

4.0 mV/V

Bridge Resistance:

350 ohm nominal

Material/Finish:

Stainless steel

Temperature:

Operating:
0 °F to 150 °F (-18 °C to 65 °C)

Seal Type:

Hermetically sealed, IP66/68

Safe Overload:

150% full scale

Rated Excitation:

5 to 10 VDC (20 V maximum)

Nonlinearity:

0.05% full scale

Hysteresis:

0.04% full scale

Insulation Resistance:

5,000 megohm

Cable Length:

20 ft

Cable Color Code:

Red +Excitation
Black -Excitation
Green +Signal
White -Signal

Warranty:

Two-year limited