

MSI-3460B

Assembly (250 to 10,000 lb)

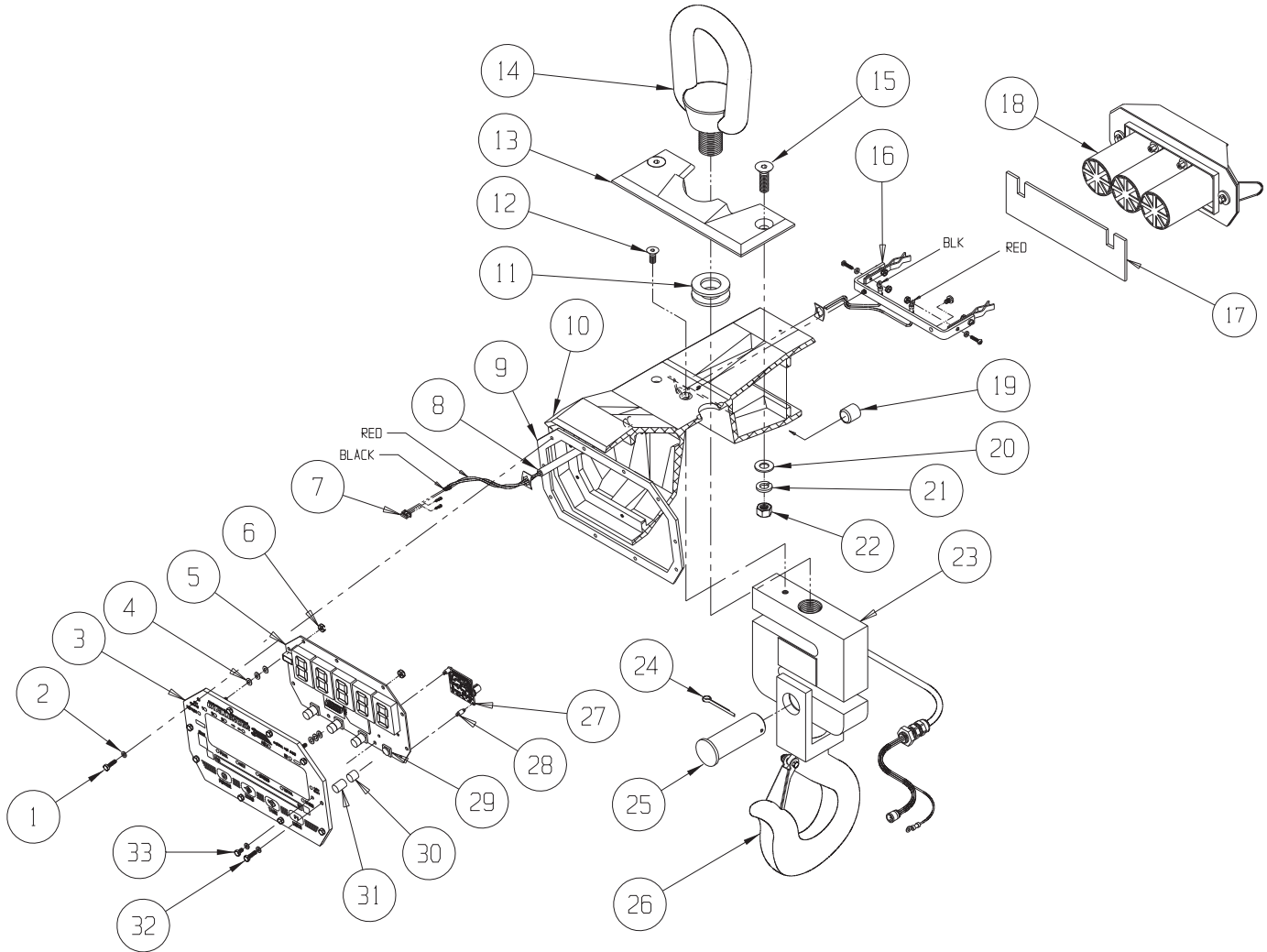


Part Number/Price

Item #	Part #	Description	Price
1	142276	Screw, hex head, 6-32 × 5/8, stainless steel	Consult
2	144645	Washer, rubber #6	Consult
3	149298	Front panel assembly	Consult
4	141899	Washer, flat, #6	Consult
5	149279	PCB display	Consult
6	146627	Nut, hex, 6-32, stainless steel	Consult
7	144528	Connector, power to PCB	Consult
8	148347	Tube, power cable	Consult
9	150056	Gasket, front panel	Consult
10	150398	Casting	Consult
11	148177	Washer, foam	Consult
12	146120	Screw, flat head, 1/4-20 × 5/8, stainless steel	Consult
13	148052	Plate, keeper, 250 to 2,000 lb	Consult
13	148050	Plate, keeper, 5,000 to 10,000 lb	Consult
14	142030	Eye, lifting, 250 to 2,000 lb	Consult
14	135441	Eye, lifting, 5,000 to 10,000 lb	Consult
15	146121	Screw, flat head, 3/8-16 × 1-1/4, allen, stainless steel	Consult
16	139821	Bracket assembly, battery clip	Consult
17	149750	Pad, battery	Consult
18	140049	Battery assembly	Consult
19	145927	Cap, receptacle	Consult
19a	145923	Receptacle	Consult
20	146533	Washer, flat, 3/8, stainless steel	Consult
21	15160	Washer, split lock, 3/8, stainless steel	Consult
22	126992	Nut, hex, 3/8-16, stainless steel	Consult
23	139081	Load cell assembly, 250/500 lb	Consult
23	139081	Load cell assembly, 1,000/2,000 lb	Consult
23	139082	Load cell assembly, 5,000/10,000 lb	Consult
24	145944	Pin, cotter, (fits 11205 clevis pin)	Consult
24	15258	Pin, cotter, (fits 11206 clevis pin)	Consult
25	142594	Pin, clevis (fits C00524-0009 hook)	Consult
25	142595	Pin, clevis (fits C00524-0010 hook)	Consult
26	140079	Hook/clevis assembly, 250 to 2,000 lb	Consult
	143232	Latch, safety (fits C00524-0009)	Consult
26	140080	Hook/clevis assembly, 5,000 to 10,000 lb	Consult
	143233	Latch, safety (fits C00524-0010)	Consult
27	153429	PCA, with Turck insert	Consult
28	144929	Spacer, dual locking	Consult
29	143816	Switch	Consult
30	144643	Cap, switch .364 in, orange	Consult
31	144644	Cap, switch .236 in	Consult
32	142573	Screw, hex head, 6-32 × 5/8, stainless steel , drilled	Consult
33	142574	Screw, hex head, 6-32 × 1/4, stainless steel	Consult

REPLACEMENT PARTS

MSI-3460B
Assembly (250 to 10,000 lb)



REPLACEMENT PARTS

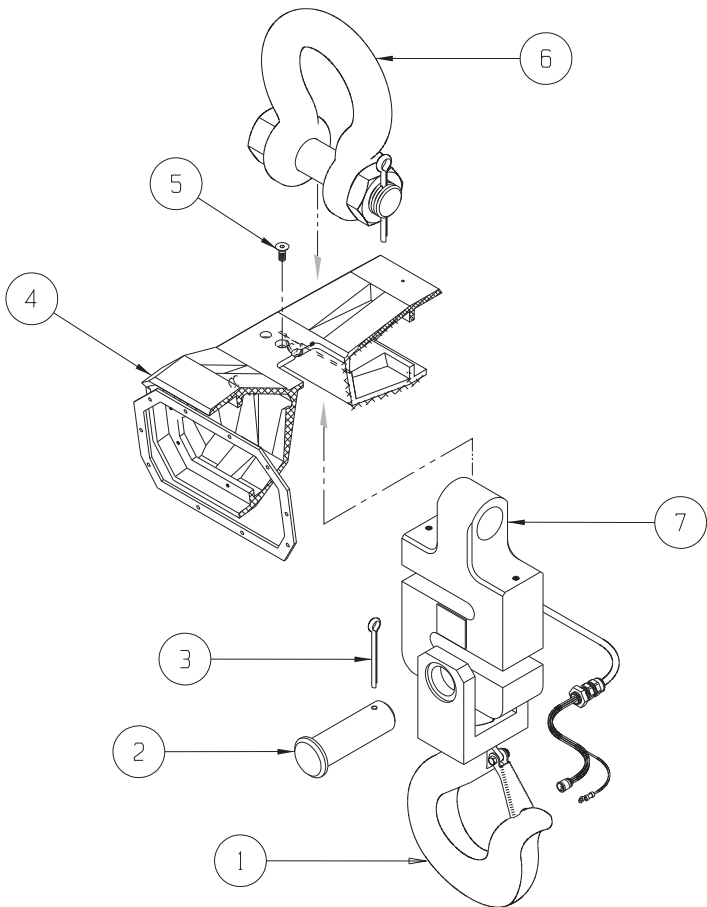
MSI-3460B

Assembly (15,000 lb)



Part Number/Price

Item #	Part #	Description	Price
1	135966	Swivel hook clevis assembly	Consult
-	143234	Latch, safety (fits 135966)	Consult
2	142836	Pin clevis, 1.25 diameter x 4, steel plated	Consult
3	142186	Pin, cotter, 3/16 x 2	Consult
4	136084	Casting	Consult
5	146120	Screw, 1/4-20 x 5/8, allen, stainless steel	Consult
6	146331	Shackle 12 ton	Consult
7	139083	Load cell assembly, 15,000 lb/7,000 kg	Consult

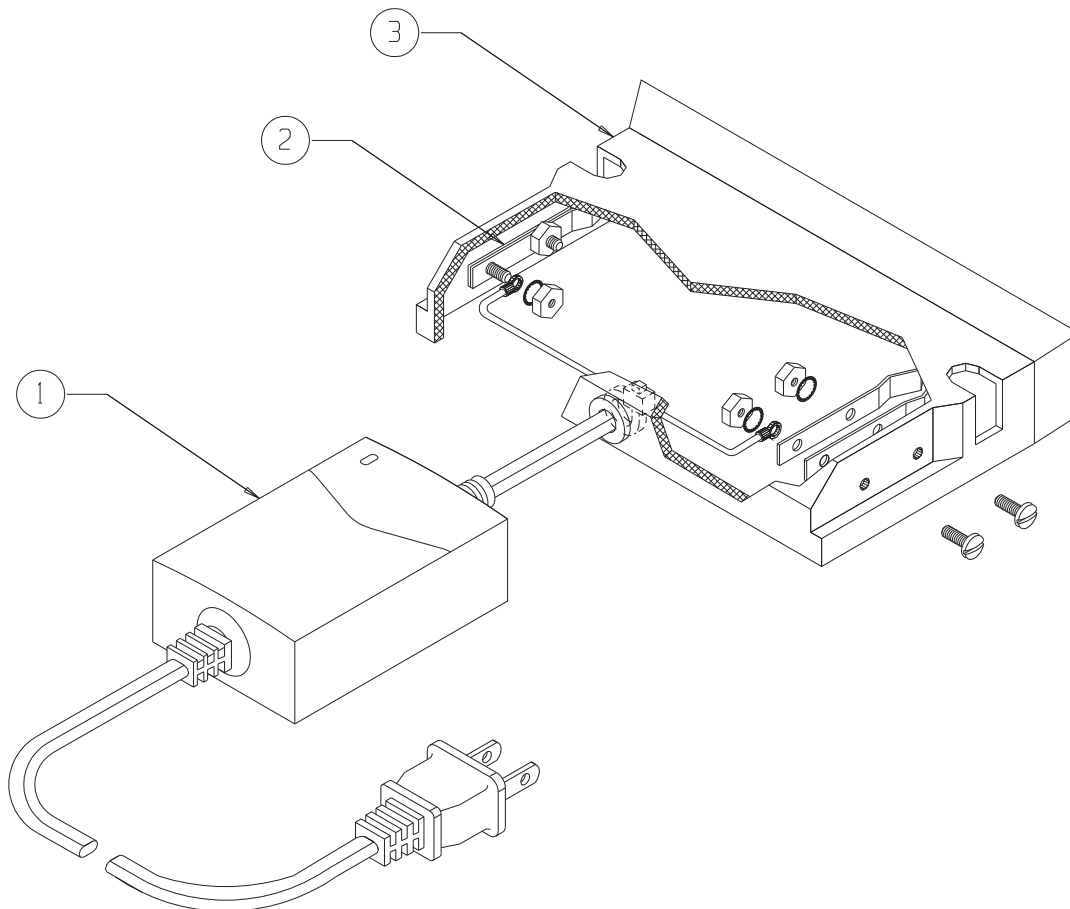


REPLACEMENT PARTS



Part Number/Price

Item #	Part #	Description	Price
1	162172	Charger, 6 V universal input	Consult
2	150038	Clip, battery terminal	Consult
3	150055	Enclosure	Consult
	139152	Battery charger assembly, US plug	Consult
	139153	Battery charger assembly, European plug	Consult
	139154	Battery charger assembly, no plug	Consult



REPLACEMENT PARTS

MSI-3460C

Assembly (250 to 10,000 lb)

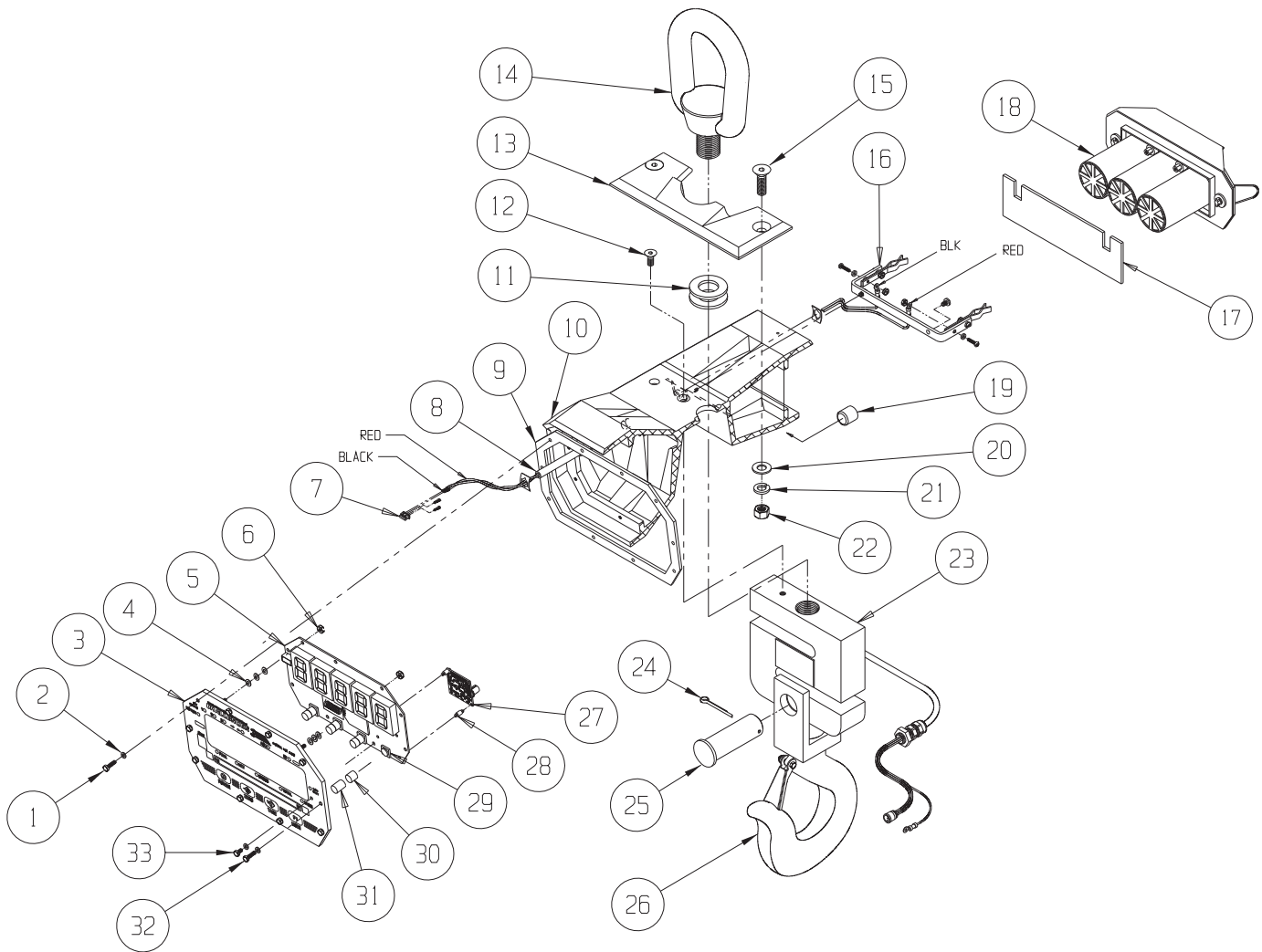


Part Number/Price

Item #	Part #	Description	Price
1	142276	Screw, hex head, 6-32 × 5/8, stainless steel	Consult
2	144645	Washer, rubber #6	Consult
3	206935	Front panel assembly	Consult
3	202494	Front panel assembly(EU)	Consult
4	141899	Washer, flat, #6	Consult
5	199170	PCB display	Consult
6	128445	Nut, hex, 6-32, stainless steel	Consult
7	144528	Connector, power to PCB	Consult
8	148347	Tube, power cable	Consult
9	150056	Gasket, front panel	Consult
10	150398	Casting	Consult
11	148177	Washer, foam	Consult
12	146120	Screw, flat head, 1/4-20 × 5/8, stainless steel	Consult
13	148052	Plate, keeper, 250 to 2,000 lb	Consult
13	148050	Plate, keeper, 5,000 to 10,000 lb	Consult
14	142030	Eye, lifting, 250 to 2,000 lb	Consult
14	135441	Eye, lifting, 5,000 to 10,000 lb	Consult
15	146121	Screw, flat head, 3/8-16 × 1-1/4, allen, stainless steel	Consult
16	139821	Bracket assembly, battery clip	Consult
17	149750	Pad, battery	Consult
18	140049	Battery assembly	Consult
19	145927	Cap, receptacle	Consult
19a	145923	Receptacle	Consult
20	146533	Washer, flat, 3/8, stainless steel	Consult
21	15160	Washer, split lock, 3/8, stainless steel	Consult
22	126992	Nut, hex, 3/8-16, stainless steel	Consult
23	139081	Load cell assembly, 250/500 lb	Consult
23	139081	Load cell assembly, 1,000/2,000 lb	Consult
23	139082	Load cell assembly, 5,000/10,000 lb	Consult
24	145944	Pin, cotter, (fits 11205 clevis pin)	Consult
24	15258	Pin, cotter, (fits 11206 clevis pin)	Consult
25	142594	Pin, clevis (fits C00524-0009 hook)	Consult
25	142595	Pin, clevis (fits C00524-0010 hook)	Consult
26	140079	Hook/clevis assembly, 250 to 2,000 lb	Consult
	143232	Latch, safety (fits C00524-0009)	Consult
26	140080	Hook/clevis assembly, 5,000 to 10,000 lb	Consult
	143233	Latch, safety (fits C00524-0010)	Consult
27	153429	PCA, with Turck insert	Consult
28	144929	Spacer, dual locking	Consult
29	143816	Switch	Consult
30	144643	Cap, switch .364 in, orange	Consult
31	144644	Cap, switch .236 in	Consult
32	142573	Screw, hex head, 6-32 × 5/8, stainless steel , drilled	Consult
33	142574	Screw, hex head, 6-32 × 1/4, stainless steel	Consult

REPLACEMENT PARTS

MSI-3460C
Assembly (250 to 10,000 lb)



REPLACEMENT PARTS