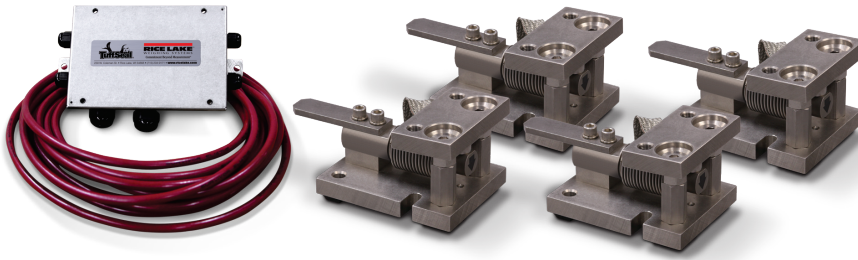


# RL1700 HE

Light- to Medium-capacity Weigh Modules



Picture is a representation of actual product.

## Order Information

Load Rating (Per Module)	Part #	Price
<b>Single Module (Includes Load Cell)</b>		
5 kg	32687	Consult
10 kg	32688	Consult
20 kg	32689	Consult
50 kg	32690	Consult
100 kg	32691	Consult
200 kg	32692	Consult
250 kg	32693	Consult
500 kg	32974	Consult
1,000 kg	32973	Consult
2,000 kg	32972	Consult
5,000 kg	32971	Consult
<b>3-Module Kit</b>		
5 kg	32920	Consult
10 kg	32921	Consult
20 kg	32922	Consult
50 kg	32923	Consult
100 kg	32924	Consult
200 kg	32925	Consult
250 kg	32926	Consult
500 kg	32980	Consult
1,000 kg	32981	Consult
2,000 kg	32982	Consult
5,000 kg	32983	Consult
<b>4-Module Kit</b>		
5 kg	32927	Consult
10 kg	32928	Consult
20 kg	32929	Consult
50 kg	32930	Consult
100 kg	32931	Consult
200 kg	32932	Consult
250 kg	32933	Consult
500 kg	32984	Consult
1,000 kg	32985	Consult
2,000 kg	32986	Consult
5,000 kg	32987	Consult

## Dimensions

Rated Capacity	C	B	*H1	**H2	L	L1	L2	L3	L4	L5	W	W1	W2	W3
kg/mm														
5 to 250	13.1	1/2-20 UNF	80.0	86.1	131.8	63.8	76.0	42.0	56.0	14.1	101.4	70.0	15.5	25.4
500 to 2,000	13.1	5/8-18 UNF	101.6	109.4	165.1	71.2	129.5	15.5	75.5	60.0	110.0	70.0	20.0	31.8
5,000	19.8	3/4-10 UNC	135.0	143.0	215.0	81.0	161.0	20.0	90.0	70.0	150.0	90.0	30.0	40.0

\* In weighing position \*\* In jacked-up position for load cell shipping or removal

## Complete Kit Includes

- Three or four RL1700 HE stainless steel compression mounts with NTEP Certified RL9018SS (5 to 250 kg) or RLHTO (500 to 5,000 kg) stainless steel, hermetically sealed single-ended beam load cells
- One JB4SS NEMA Type 4X stainless steel signal-trim junction box
- 25 ft of our hostile environment EL147HE SURVIVOR load cell cable

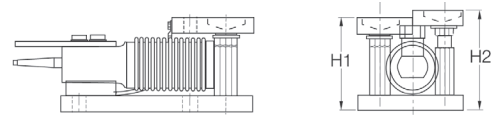
## Standard Features

- Capacities (per module) 5 kg to 5,000 kg
- All stainless steel, weldless construction retains less residue and allows fast, thorough cleaning
- Bolt-in-place design; module bolts directly to tank leg without requiring additional load buttons or mounting plates
- Self-checking with lift-off/tip-over protection and jacking/shipping bolts
- Load cell is isolated from overload in all directions

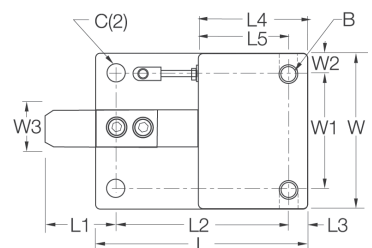
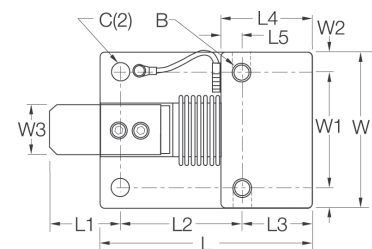
## Applications

- Multi-ingredient micro-batching
- Meat and poultry processing
- Batching/blending
- Dye/ink blending

## Load Cell Approvals



5 kg - 250 kg capacities



500 kg - 5000 kg capacities

SURVIVOR®  
WEIGH MODULES