

# RL32018

Alloy Steel, Environmentally Sealed, NTEP Certified 1:5,000 Class III Multiple Cell, IP66



Picture is a representation of actual product.

### Approvals



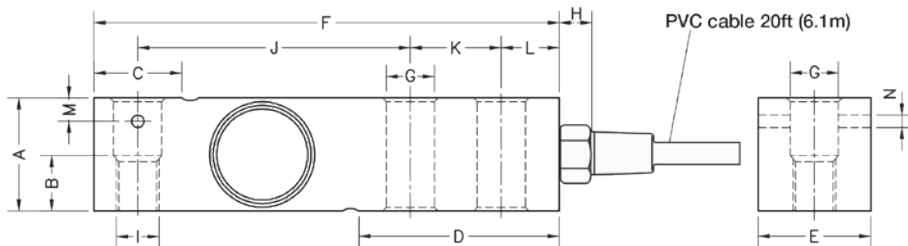
### Order Information

Load Rating	Part #	Est. Weight	Price
<b>NTEP Certified</b>			
500 lb*	<b>189151</b>	2 lb	Consult
1,000 lb	<b>189152</b>	2 lb	Consult
1,500 lb	<b>191732</b>	2 lb	Consult
2,000 lb	<b>189153</b>	2 lb	Consult
2,500 lb	<b>189154</b>	2 lb	Consult
3,000 lb	<b>189155</b>	5 lb	Consult
4,000 lb	<b>189156</b>	5 lb	Consult
5,000 lb SE	<b>189157</b>	5 lb	Consult
5,000 lb LE	<b>189158</b>	5 lb	Consult
10,000 lb	<b>189159</b>	5 lb	Consult
<b>Non-NTEP Certified</b>			
250 lb	<b>189150</b>	2 lb	Consult
15,000 lb	<b>189160</b>	10 lb	Consult
20,000 lb	<b>189161</b>	10 lb	Consult
<b>With Overbraided Cable</b>			
2,500 lb	<b>209166</b>	10 lb	Consult
20,000 lb*	<b>197558</b>	10 lb	Consult

SE=small envelope; LE=large envelope  
 \* Pending NTEP

### Dimensions

Rated Capacity	A	B	C	D	E	F	G	H	I	J	K	L	M	N
250 to 500	1.00	0.59	0.96	2.20	1.24	5.12	0.53	0.70	1/2-20 UNF	3.00	1.00	0.62	0.25	0.13
1,000 to 5,000 SE	1.24	0.59	0.96	2.20	1.24	5.12	0.53	0.70	1/2-20 UNF	3.00	1.00	0.62	0.25	0.13
5,000 LE to 10,000	1.50	0.75	1.45	2.99	1.50	6.75	0.80	0.70	3/4-16 UNF	3.75	1.50	0.75	-	-
15,000 to 20,000	2.00	-	-	4.00	2.00	8.75	1.06	-	1-14 UNS	4.90	2.00	1.00	-	-



### Interchangeable Products

- VPG® SENSORTRONICS®  
**65023A**.....page 281
- VPG® CELTRON®  
**SQB**.....page 191

### Weigh Module Available

- RICE LAKE WEIGHING SYSTEMS  
**RL50210TA**.....page 37
- RICE LAKE WEIGHING SYSTEMS  
**RL1800 Series**..... page 48

### Specifications

- Full Scale Output:**  
 3.0 mV/V ± 0.05%  
 mV/V/ohm calibration
- Output Resistance:**  
 350 (± 3) ohm
- Input Resistance:**  
 400 (± 20) ohm
- Material/Finish:**  
 Alloy steel, nickel plated
- Temperature:**  
 Compensated:  
 -14 °F to 104 °F (-10 °C to 40 °C)  
 Operating:  
 0 °F to 150 °F (-18 °C to 65 °C)
- Seal Type:**  
 Environmentally sealed, IP66
- Safe Overload:**  
 150% full scale
- Safe Sideload:**  
 100% full scale
- Rated Excitation:**  
 10 VDC (15 V maximum)
- Combined Error:**  
 0.017% full scale
- Insulation Resistance:**  
 > 5,000 megohm
- Deflection at Capacity:**  
 0.2 to 0.4 mm
- Cable Length:**  
 20 ft
- Cable Color Code:**  
 Red +Excitation  
 Black -Excitation  
 Green +Signal  
 White -Signal
- Warranty:**  
 Two-year limited
- Approvals:**  
 NTEP 18-106  
 cFMus FM18US0307X

RICE LAKE  
LOAD CELLS