

# RL32018S-HE

Stainless Steel, Hermetically Sealed, NTEP Certified 1:5,000 Class III Multiple Cell, IP69K



Picture is a representation of actual product.

### Approvals



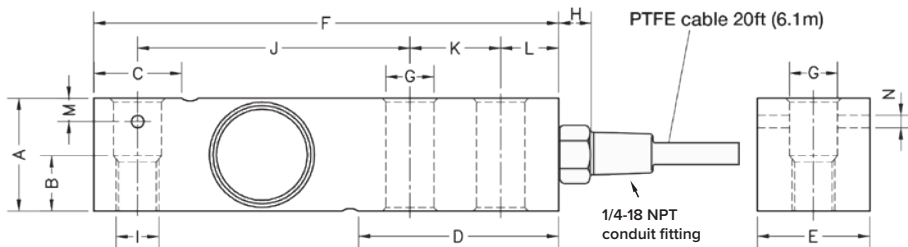
### Order Information

Load Rating	Part #	Est. Weight	Price
500 lb	189175	3 lb	Consult
1,000 lb	189176	3 lb	Consult
2,000 lb	189178	3 lb	Consult
2,500 lb	189179	3 lb	Consult
4,000 lb	189181	3 lb	Consult
5,000 lb SE	208667	3 lb	Consult
5,000 lb LE	189182	5 lb	Consult
10,000 lb	189183	5 lb	Consult

SE=small envelope; LE=large envelope

### Dimensions

Rated Capacity	A	B	C	D	E	F	G	H	I	J	K	L	M	N
lb/in														
500 to 5,000 SE	1.24	0.59	0.96	2.20	1.24	5.12	0.53	0.70	1/2-20 UNF	3.00	1.00	0.62	0.25	0.13
5,000 to 10,000	1.50	0.75	1.45	2.99	1.50	6.75	0.80	0.70	3/4-16 UNF	3.75	1.50	0.75	-	-



### Interchangeable Products

- RICE LAKE WEIGHING SYSTEMS  
**RL32018S-P** (non-NTEP) .page 105
- VPG® SENSORTRONICS®  
**65083**..... page 284
- VPG® CELTRON®  
**SQB-HSS**..... page 192

### Weigh Module Available

- RICE LAKE WEIGHING SYSTEMS  
**RL1800 Series**..... page 48

### Specifications

- Full Scale Output:**  
3.0 mV/V ±0.05%  
mV/V/ohm calibration
- Output Resistance:**  
350 (±3) ohm
- Input Resistance:**  
400 (±20) ohm
- Material/Finish:**  
Stainless steel
- Temperature:**  
Compensated:  
14 °F to 104 °F (-10 °C to 40 °C)  
Operating:  
0 °F to 150 °F (-18 °C to 93 °C)
- Seal Type:**  
Hermetically sealed, IP69K
- Safe Overload:**  
150% full scale
- Safe Sideload:**  
100% full scale
- Rated Excitation:**  
5 to 10 VDC (15 V maximum)
- Combined Error:**  
0.017% full scale
- Insulation Resistance:**  
>5,000 megohm
- Cable Length:**  
20 ft PTFE cable
- Cable Color Code:**  
Red +Excitation  
Black -Excitation  
Green +Signal  
White -Signal
- Warranty:**  
Two-year limited
- Approvals:**  
NTEP 18-106  
cFMus