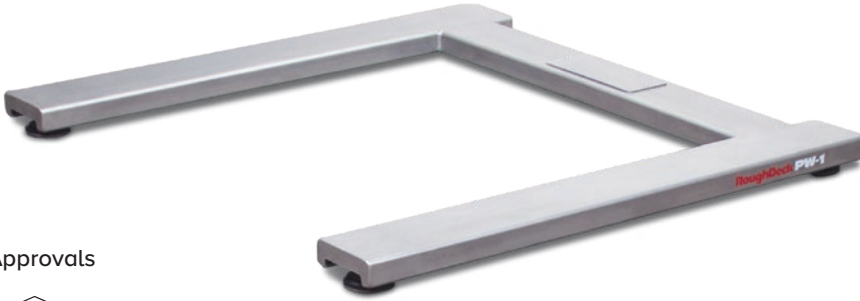


# RoughDeck® PW-1 Stainless Steel

Low-profile Pallet Weighing Floor Scale



## Approvals



## Part Number/Price

Part #	Size (W × L × H)	Capacity	Est. Weight	Price
177910	48 × 48 × 3 in	2,500 lb	200 lb	Consult
177911	48 × 60 × 3 in	2,500 lb	210 lb	Consult
177912	60 × 60 × 3 in	2,500 lb	235 lb	Consult
177913	48 × 48 × 3 in	5,000 lb	200 lb	Consult
177914	48 × 60 × 3 in	5,000 lb	210 lb	Consult
177915	60 × 60 × 3 in	5,000 lb	235 lb	Consult

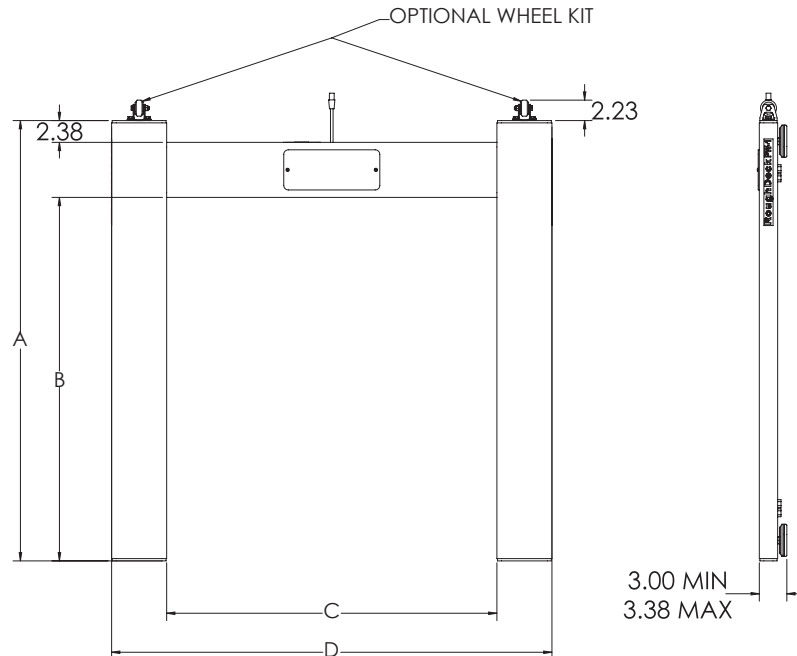
## Options/Accessories

Part #	Description	Price
18778	Floor anchor plates, stainless steel (set of 2)	Consult
28740	Floor stand for indicator, 36.3 in high, stainless steel	Consult
178250	Wheel kit option (wheels engage at a 28° angle)	Consult
Consult	Stainless steel deck with RL32218S-HE hermetically sealed IP69K stainless steel cFmus approved load cells and hardware	Consult

## Dimensions

PW-1 Stainless Steel	
4 × 4 ft (160 lb)	
A	48.00 in
B	39.63 in
C	36.00 in
D	48.00 in
4 × 5 ft (170 lb)	
A	48.00 in
B	39.63 in
C	48.00 in
D	60.00 in
5 × 5 ft (195 lb)	
A	60.00 in
B	51.63 in
C	48.00 in
D	60.00 in

Note: 1 in=25.4 mm



## Standard Features

- Low-profile design
- 20 ft SURVIVOR® EL147HE hostile environment load cell cable
- Top-access junction box
- Four adjustable, stainless steel SUREFOOT™ support feet
- Four stainless steel, IP66 shear beam load cells

## Specifications

### End Load Capacity:

- 80% full scale at 2,500 lb
- 100% full scale at 5,000 lb

### Cable Length:

- 20 ft (6.1 m) for connecting junction box to indicator

### Scale Weldment:

- AISI304L, glass bead blasted for even appearance

### Junction Box:

- TuffSeal® JB4SS stainless steel, NEMA Type 4X junction box with signal trim card

### Welding:

- Stitch, consult factory if continuous is required

### Warranty (limited):

- Load cells: Two years
- All other components: One year

FLOOR SCALES