

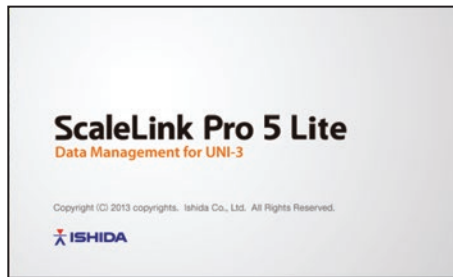


# Ishida ScaleLink Pro 5 Lite

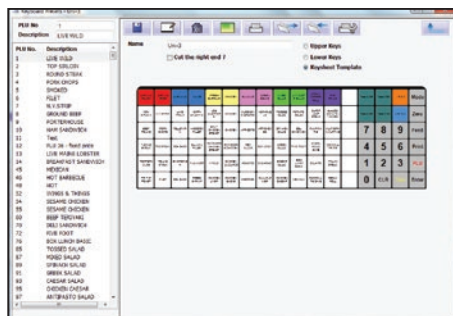
Scale Management Software

## FEATURES

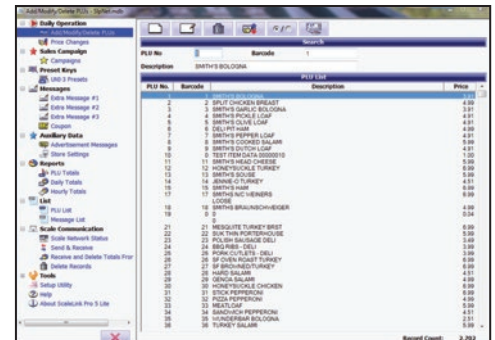
- Supports 2020 nutritional data requirements
- Import/export ASCII delimited text files
- Receive and export production totals data
- PLU search by name or number
- Customizable PLU entry screen and reports
- Left side menu tree format
- Print scale operator key sheets
- Single database file
- Supports Uni-3



Log-on Screen



Uni-3 Presets



Main Screen



## SPECIFICATIONS

### Minimum System Requirements:

Processor: 1 GHz or faster  
 System RAM: 2 GB or more if using large database  
 Hard drive: 30 to 50 MB free  
 Video: 2 MB PCI  
 Operating system: Windows 10, 11\*  
 Screen Resolution: 1024 x 768 pixels min

*\*\*Professional, Business or Ultimate versions required. Windows Home and Starter editions, Apple OS and Chrome OS not supported. ScaleLink Pro 5 installation on any virtual computer is not supported.*

14-day trial of ScaleLink Pro 5 can be downloaded from [www.ricelake.com/retail](http://www.ricelake.com/retail)  
 Windows is a registered trademark of Microsoft Corporation.

### Communications:

Ethernet TCP/IP

### Totals from Scale:

PLU production  
 Daily  
 Weekly  
 Hourly  
 Operator

### Communication to Scale:

PLU  
 Price changes  
 Nutrition  
 Extra text messages  
 Coupon messages  
 Keyboard presets  
 Advertisement messages  
 Sales campaigns  
 Data backup  
 Remote diagnostics  
 Label creation  
 Logo images

## PART NUMBER/PRICE

PART #	MODEL/DESCRIPTION	PRICE
168751**	Ishida ScaleLink Pro 5 Lite license file, one license required per computer/hard drive	Consult

*\*\*Software key is provided after purchase and online registration is completed at [www.ricelake.com/ishida-software-form](http://www.ricelake.com/ishida-software-form)*

*Software can be downloaded from the Retail Equipment Resources section at [www.ricelake.com/retail](http://www.ricelake.com/retail)*

*Purchase the license once and update as needed with one license.*

*Perpetual license to a single computer/hard drive, i.e., non-transferable between computers/hard drives.*

MULTI-PURPOSE  
RETAIL SCALESPRICE COMPUTING  
SCALESPRICE COMPUTING  
PRINTING SCALES

LABELERS

WRAPPING  
SYSTEMS

SOFTWARE

ACCESSORIES

POWER  
CONDITIONINGRETAIL  
LABELS

WARRANTY