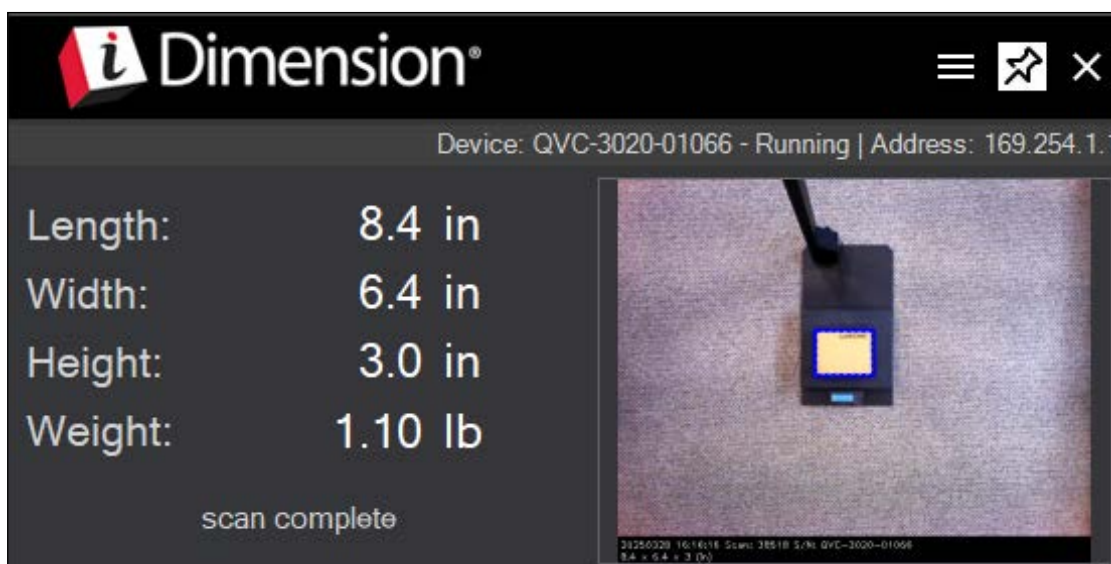


iDimension® App

Windows® Computer Application
Software Version 2

Software Manual



iDimension App Works with all iDimension Products

© Rice Lake Weighing Systems. All rights reserved.

Rice Lake Weighing Systems® is a registered trademark of
Rice Lake Weighing Systems.

All other brand or product names within this publication are trademarks or
registered trademarks of their respective companies.

All information contained within this publication is, to the best of our knowledge, complete and
accurate at the time of publication. Rice Lake Weighing Systems reserves the right to make
changes to the technology, features, specifications and design of the equipment without notice.

The most current version of this publication, software, firmware and all other product
updates can be found on our website:

www.ricelake.com

Revision History

This section tracks and describes the current and previous manual revisions for awareness of major updates and when the updates took place.

Revision	Date	Description
A	July 29, 2022	Initial manual release with the launch of the product; software version 1.0.4
B	June 25, 2025	Software name change; updated images

Table i. Revision Letter History



Technical training seminars are available through Rice Lake Weighing Systems. Course descriptions and dates can be viewed at www.ricelake.com/training or obtained by calling 715-234-9171 and asking for the training department.

Contents

1.0 Introduction	5
1.1 System Requirements	5
2.0 Installation	6
3.0 Configuration	8
3.1 Application Overview	8
3.2 Application Menu	9
3.2.1 QubeVu Manager	9
3.2.2 Operator Display	10
3.2.3 Saved Results	10
3.2.4 App Settings	11
3.2.4.1 Settings	11
3.2.4.2 Hotkeys	11
3.2.4.3 Data Fields	12
3.2.4.4 ROUND Configuration	12
3.2.4.5 Data Storage	13
3.2.5 App Log	14
3.2.6 About	14
4.0 Operation	15



Rice Lake continually offers web-based video training on a growing selection of product-related topics at no cost. Visit www.ricelake.com/webinars

1.0 Introduction

This manual provides an overview of the iDimension® App installation, configuration and operation procedures.



Manuals are available from Rice Lake Weighing Systems at www.ricelake.com/manuals

Warranty information is available at www.ricelake.com/warranties

The iDimension App is a Windows application designed to send dimensions, weight, barcodes and other data acquired by an iDimension system to an active third-party program (Microsoft® Excel® or an online shipping form) using configured hotkeys (Section 3.2.4 on page 11). Values are transferred from the iDimension system by placing the mouse cursor in the active third-party program and pressing a configured hotkey on the connected keyboard.

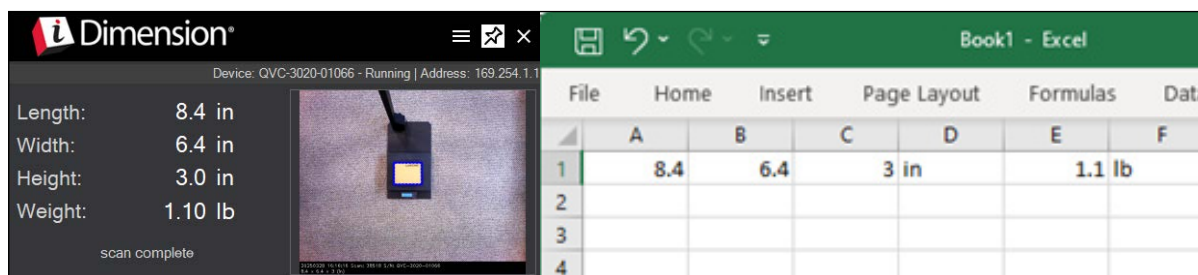


Figure 1-1. Data Transfer to Excel

The IP address of the iDimension system is all that is needed to connect the iDimension system to the iDimension App (Section 3.2.4 on page 11). The dimensional data can then be saved in a local directory along with a JPEG image and XML status file for each item dimensioned.



NOTE: Administrative privileges are required to install iDimension software on a Windows® computer.

When interfacing the iDimension App with a third-party program, reference the software manufacturer's documentation for setup and configuration.

1.1 System Requirements

The iDimension App application requires Microsoft .NET Framework 4.6.1 or later version, which can be installed on any Windows computer that supports it.



NOTE: System requirements are subject to change without notice.

Prerequisites:

- Operating System – Windows 7 or newer, 32-bit or higher
- Processor – Intel Pentium Dual Core or better
- RAM – 1 GB or higher
- Storage – Available space of 20 MB, or significantly more if images are retained
- iDimension system connected to the network with IP address configured and identified

2.0 Installation

This section provides the iDimension App installation procedure.

A Windows computer with Microsoft .NET Framework 4.6.1 or later version is required to install the iDimension App. This component is often present on the host system. If Microsoft .NET Framework 4.6.1 or later version is not installed, the iDimension App installer displays a warning message and will not proceed with the installation. If not installed, visit <https://dotnet.microsoft.com/> to download .NET Framework 4.6.1 or later version.

1. Download **iDimensionAppSetup_X-X-X-XXXXX.zip** at: www.ricelake.com/software.



NOTE: The “X-X-X-XXXXX” in the zip folder name will be the current software version number.

2. Launch the iDimensionAppSetup.exe file from the downloaded zip folder.
3. Click **Next** to continue.

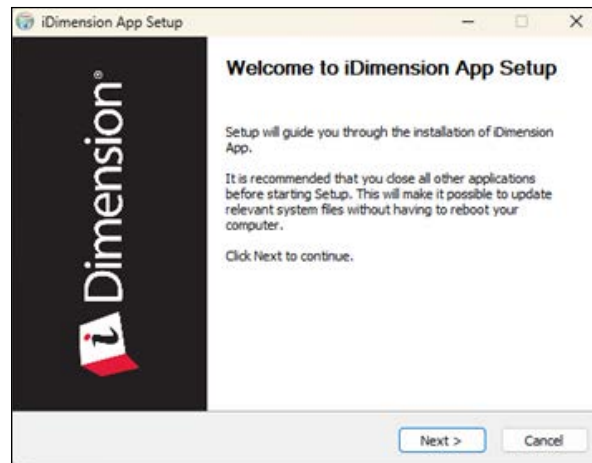


Figure 2-1. iDimension App Setup

4. Click **Browse...** to select the folder where the iDimension App should be installed.
5. Click **Next** to continue.

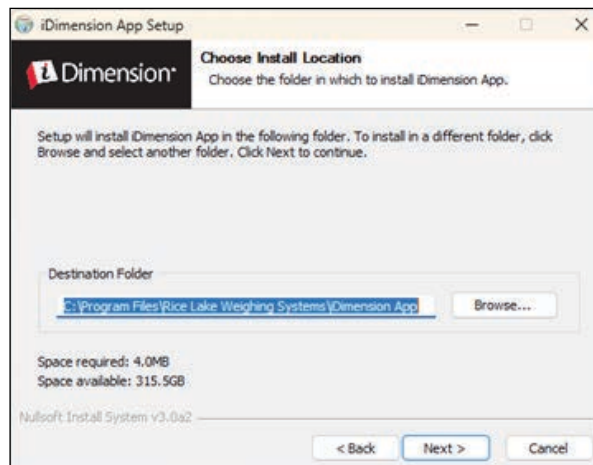


Figure 2-2. Choose Install Location

6. Select the folder where the iDimension App Start Menu shortcut will be installed.
7. Click **Install** to continue.

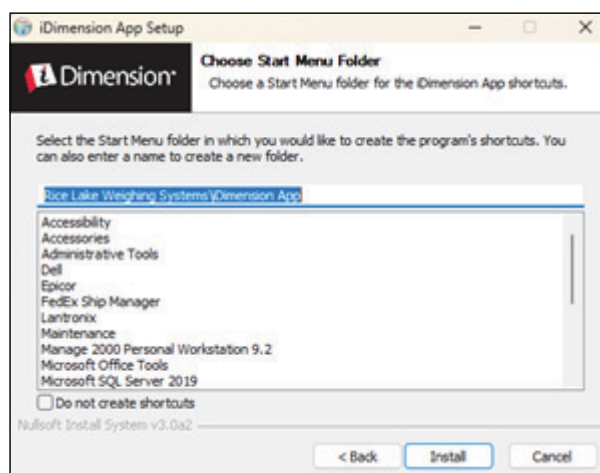


Figure 2-3. Choose Start Menu Location

8. Click **Finish** to complete the installation.

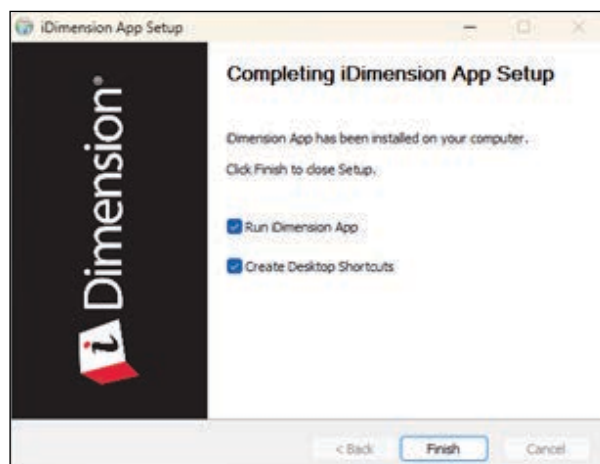



Figure 2-4. Complete iDimension App Setup



NOTE: If “Create Desktop Shortcuts” is checked, desktop icons will be created for the iDimension App  and a digital copy of this manual, iDimension App Software Manual (PN 214650). The desktop icons will appear in the folder selected in [Step 6](#). The desktop icon for the iDimension App Software Manual (PN 214650) varies depending on the PDF reader software installed on the PC.

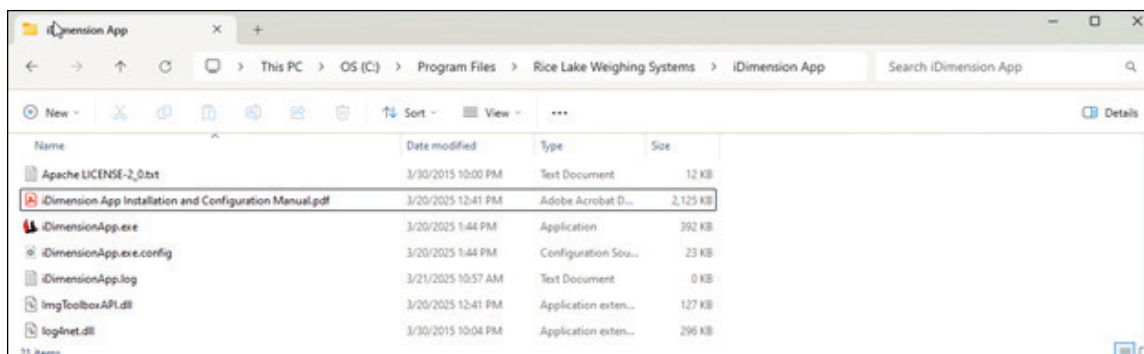


Figure 2-5. Desktop Icons

3.0 Configuration

This section provides the iDimension App setup and configuration procedure.

3.1 Application Overview

1. Launch the iDimension App. When launched, the application is minimized.



NOTE: The iDimension App notifies which hotkeys are configured. Similar notifications indicate error messages during normal operation.

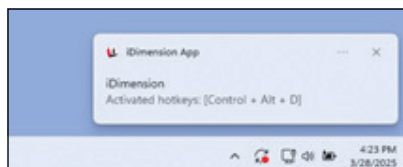


Figure 3-1. iDimension App (Minimized)

2. Click ^ in the notification area of the taskbar to open the system tray and select the iDimension icon to display the iDimension App.



NOTE: Currently running applications are found in the system tray.

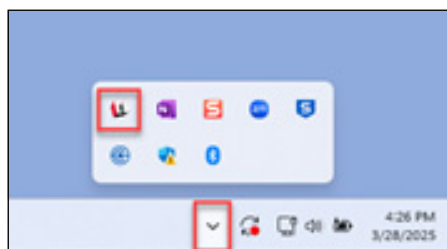


Figure 3-2. System Tray

3. Click the **Pin** icon in the top right of the application window to keep the application window permanently open in the foreground. The image window is live while waiting to be triggered.



NOTE: This function does not need to be enabled, since the software is always running in the background.



Figure 3-3. Pin Icon

Dimensions are updated in the application window each time the dimensioner is triggered. The image window shows the dimensioned item until it is removed.

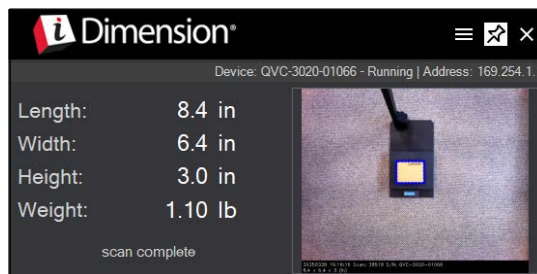


Figure 3-4. Updated Dimensions

3.2 Application Menu

Click the setup icon to view the application menu. Click to select the desired menu item.

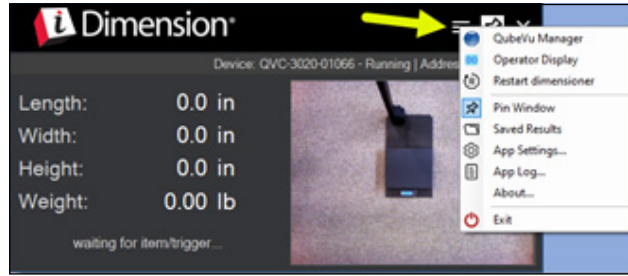


Figure 3-5. Setup Application Menu

Menu Item	Description
QubeVu Manager	See Section 3.2.1
Operator Display	See Section 3.2.2 on page 10
Restart Dimensioner	Restarts the dimensioner without cycling power.
Pin Window	Toggles the pin status of the application window. When pinned the window remains permanent in the desktop foreground.
Saved Results	See Section 3.2.3 on page 10
App Settings	See Section 3.2.4 on page 11
App Log	See Section 3.2.4.5 on page 13
About	See Section 3.2.6 on page 14
Exit	Closes the iDimension App

Table 3-1. iDimension Menu Items

3.2.1 QubeVu Manager

Launches the default web browser and runs the QubeVu Manager advanced configuration utility. Refer to the iDimension Plus Managers Guide (PN 206287) for complete documentation.



NOTE: Manuals are available from Rice Lake Weighing Systems at www.ricelake.com/manuals

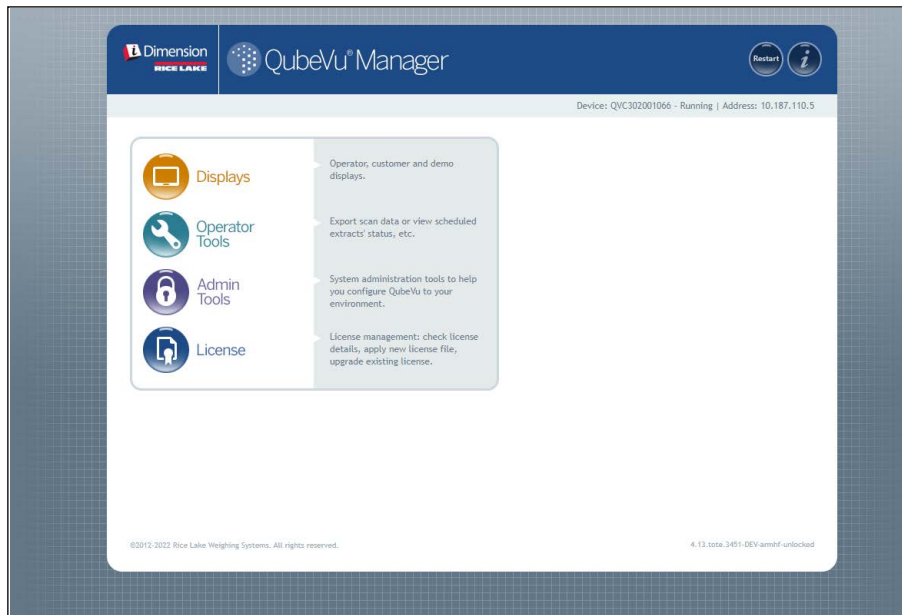


Figure 3-6. QubeVu Manager

3.2.2 Operator Display

Opens a web browser window echoing the operator display of the iDimension Plus.



Figure 3-7. iDimension Plus Operator Display

3.2.3 Saved Results

Opens the directory where the dimensional data is saved, if Data Storage options are enabled.



NOTE: See App Settings (Section 3.2.4 on page 11) to edit the Data Storage Options.

The default directory for daily saved results is:

C:\Users\<user>\Documents\Rice Lake Weighing Systems\iDimension App\data

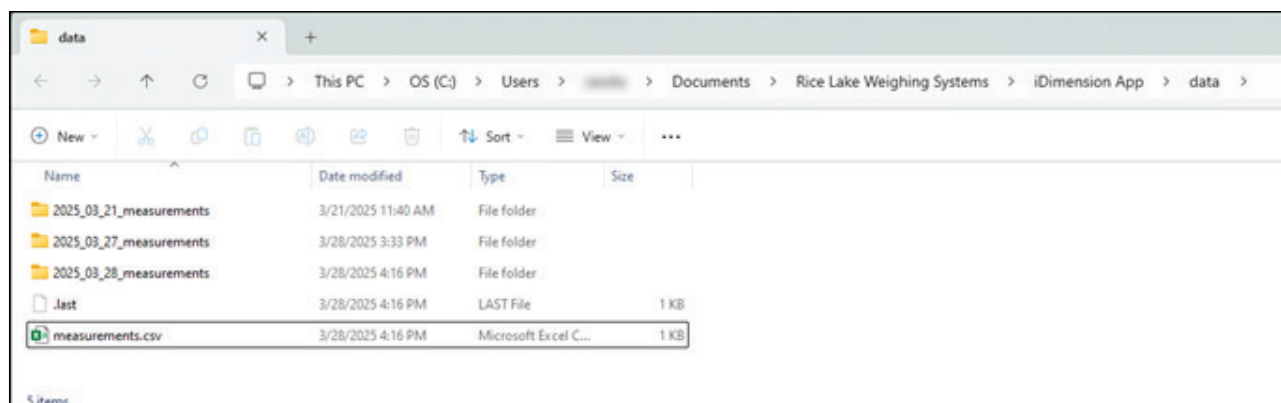


Figure 3-8. Saved Data Directory

Each daily folder contains another folder for each measurement and a CSV file summarizing all dimensions for that day.

Name	Date modified	Type	Size
708_1_51_04_PM	5/6/2022 1:51 PM	File folder	
709_1_52_15_PM	5/6/2022 1:52 PM	File folder	
710_1_55_45_PM	5/6/2022 1:55 PM	File folder	
measurements.csv	5/6/2022 1:55 PM	Microsoft Excel Comma Separat...	1 KB

Figure 3-9. Daily Folder

Each measurement folder contains a CSV file with dimensions, an XML status log file and a JPEG image file (if enabled).

Name	Date modified	Type	Size
measurements.csv	5/6/2022 1:51 PM	Microsoft Excel Comma S...	1 KB
QVLowResImage.jpeg	5/6/2022 1:51 PM	JPEG File	111 KB
status.xml	5/6/2022 1:51 PM	XML Document	7 KB

Figure 3-10. Measurement Folder

3.2.4 App Settings

Opens the application settings window for configuring general **Settings**, assigning **Hotkeys** and **Data Storage** options.

3.2.4.1 Settings

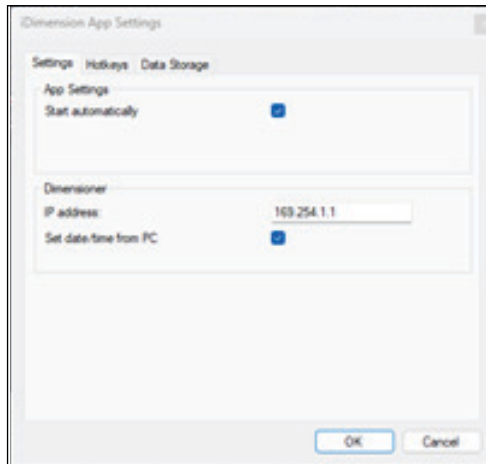



Figure 3-11. iDimension App Settings

- Enable the **Start automatically** option to automatically launch the iDimension App each time the computer restarts.

- Enter the dimensioner's IP address.

 **NOTE:** Validation helps identify an invalid IP addresses or if the connection to the iDimension fails by coloring the input field red.

- Enable the **Set date/time from PC** option to sync the files' stored time/date with the computer.

3.2.4.2 Hotkeys

Multiple hotkeys can be assigned, allowing the iDimension App to be used with multiple PC applications.

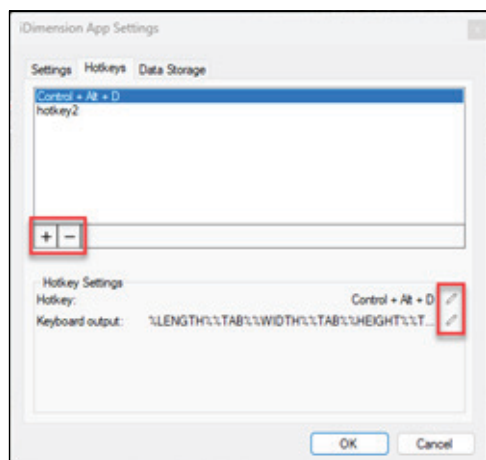





Figure 3-12. Hotkey Assignment

- Click  to add a hotkey.
- Click  to delete a hotkey.
- Click the **Hotkey:**  to edit a hotkey.

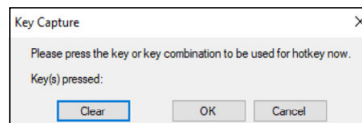


Figure 3-13. Edit Hotkey

- Click the **Keyboard output:**  to edit the keyboard wedge output.

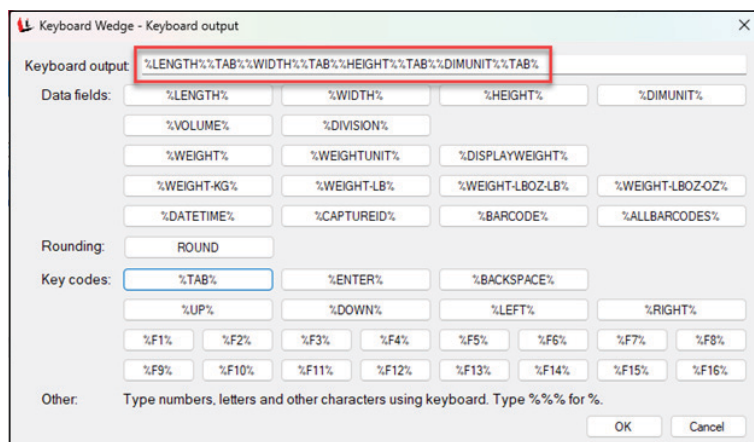


Figure 3-14. Keyboard Output

Example: If the operator specifies **TAB** as the hotkey then include %TAB% in the output pattern that would create a never-ending keyboard output. Using a combination of keys that use **ALT**, **CTRL** and or **SHIFT** is common use.

 **NOTE:** No single character output keys without modifying keys (**ALT**, **CTRL**, **SHIFT**) are allowed. This is to prevent creation of repetitive key output patterns.

3.2.4.3 Data Fields

Data fields pull the information from the iDimension web service API. The following is a definition of the data fields available:



NOTE: Data fields and certain special characters are enclosed by % characters. Text literals are allowed in the Keyboard output field. To output a single % character, specify %%% (three consecutive % characters).

Data Fields	Description
%LENGTH%	Length field
%HEIGHT%	Height field
%WIDTH%	Width field
%DIMUNIT%	Measurement units defined in the QubeVu Manager Certification Menu ; Available selections: in, cm, mm, m
%VOLUME%	Volume (L x W x H) of object being dimensioned
%DIVISION%	Division size used for measurement
%WEIGHT%	Not recommended for use, provides a converted value from the scale display weight in ounces or grams
%WEIGHTUNIT%	Not recommended for use, provides "oz" when the scale is in LB or LB/OZ mode or "g" when the scale is in KG mode
%DISPLAYWEIGHT%	Provides the scales displayed weight plus measurement units; <i>Examples: 1.64 lb, 1 lb 10.0 oz, 0.74 kg</i>
%WEIGHT-LB%	Converts the %WEIGHT% data field to lb without measurement units; <i>Example: 1.64</i>
%WEIGHT-KG%	Converts the %WEIGHT% data field to kg without measurement units; <i>Example: 0.74</i>
%WEIGHT-LBOZ-LB%	Displays weight value in pounds
%WEIGHT-LBOZ-OZ%	Displays weight value in ounces
%DATETIME%	Prints the iDimension date and time of the transaction; <i>Example: 2021-10-19 17:10:54</i> NOTE: Can be converted in the custom setting of Excel.
%CAPTUREID%	Prints the capture ID of the iDimension transaction
%BARCODE%	Barcode data sent by external barcode scanner
%ALLBARCODES%	All barcode data sent by external barcode scanner and recognized by QubeVu combined as CSV
ROUND	Click to open the Rounding Selection window (see Section 3.2.4.4)
KeyCodes	Simulates the function of the listed keyboard commands
Other	Add numbers, letters, space key or other keyboard characters to the output format

Table 3-2. API Data Fields

3.2.4.4 ROUND Configuration

Perform the procedure below to generate a custom rounding token.

The screenshot shows two windows. The top window is 'Keyboard Wedge - Keyboard output'. It has a 'Data fields' section with buttons for %LENGTH%, %WIDTH%, %HEIGHT%, %DIMUNIT%, %VOLUME%, %DIVISION%, %WEIGHT%, %WEIGHTUNIT%, %DISPLAYWEIGHT%, %WEIGHT-LB%, %WEIGHT-KG%, %WEIGHT-LBOZ-LB%, %WEIGHT-LBOZ-OZ%, %DATETIME%, %CAPTUREID%, %BARCODE%, and %ALLBARCODES%. Below this is a 'Rounding' section with a 'ROUND' button highlighted by a red box. The bottom window is 'Rounding Selection'. It has a 'Source Value' section with radio buttons for Length, Width, Height, Weight, Weight-lb, and Weight-kg. The 'Rounding Method' section has radio buttons for Ceiling, Floor, and Nearest. The 'Division' section has a text box with the value '1'. The 'Test Results' section shows a list of values and their rounded results: 0.4 rounds to 1, 1.3 rounds to 2, 1.5 rounds to 2, 11.75 rounds to 12, and 105.4 rounds to 127.

Figure 3-15. Round Configuration

- Open the Rounding Selection window by selecting the ROUND token in the Keyboard Output window.
- Configure the following parameters
 - Source Value
 - Rounding Method
 - Ceiling:** Rounds up to the next whole number
 - Floor:** Rounds down to the current whole number
 - Nearest:** Rounds to the nearest whole number
 - Division
- Select OK.

3.2.4.5 Data Storage

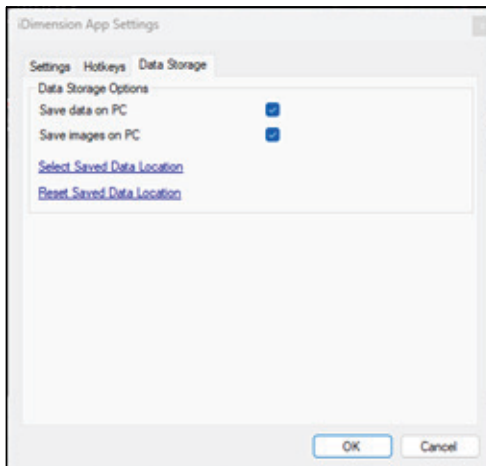


Figure 3-16. Data Storage Setting

- Enable **Save data on PC** to save measurements in the data directory. The default data directory is located at:
`C:\Users\<user>\Documents\Rice Lake Weighing Systems\iDimension Desktop Wedge\data`
- Enable **Save images on PC** to save captured images.
- Select **Select Saved Data Location** to change the data directory path. A browser window opens to select a local or network folder. Previously saved data remains in its original folder
- Select **Reset Saved Data Location** to reset the data storage location to the Windows application default. Previously saved data remains in its original folder



NOTE: Each saved image is approximately 110 KB in size.

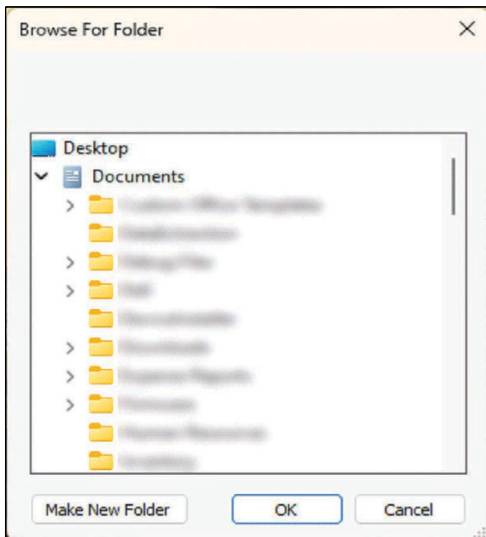


Figure 3-17. Browse For Folder

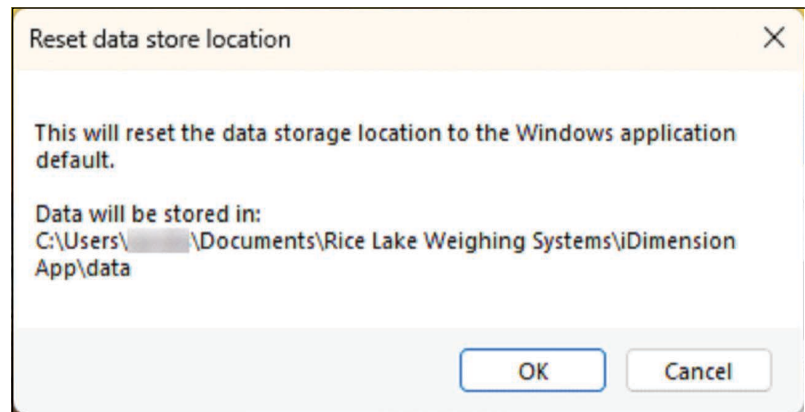


Figure 3-18. Data Store Location Reset

3.2.5 App Log

Opens a diagnostic application activity log file.

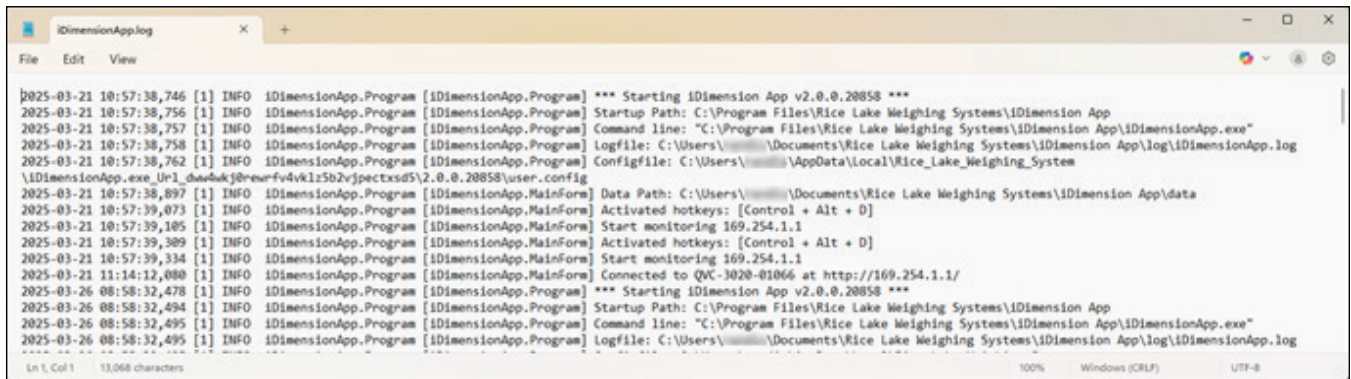


Figure 3-19. Log File

3.2.6 About

Opens the About window with version and copyright information.

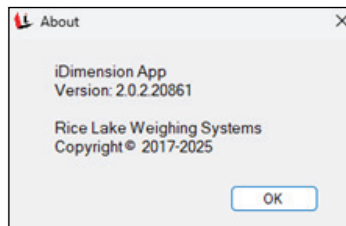


Figure 3-20. About Window

4.0 Operation

This section provides the iDimension App operation procedure.

1. Launch the iDimension App ([Section 3.1 on page 8](#)).
2. With the dimensioner in the **Ready** state, place the item/package onto the platform.
3. With the dimensioner in the **Remove** state and with the measured item in position, place the mouse cursor in the active third-party program window and press a configured hotkey ([Section 3.2.4 on page 11](#)) on the connected keyboard. Values are transferred from the dimensioner to the third-party program.
4. Remove the item/package. Dimensioner returns to **Ready** state.



NOTE: Below is a keyboard output example in Microsoft Excel and the valid keyboard configuration it was captured with.

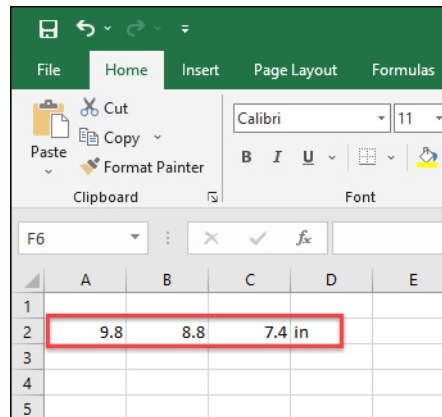


Figure 4-1. Keyboard Output Example

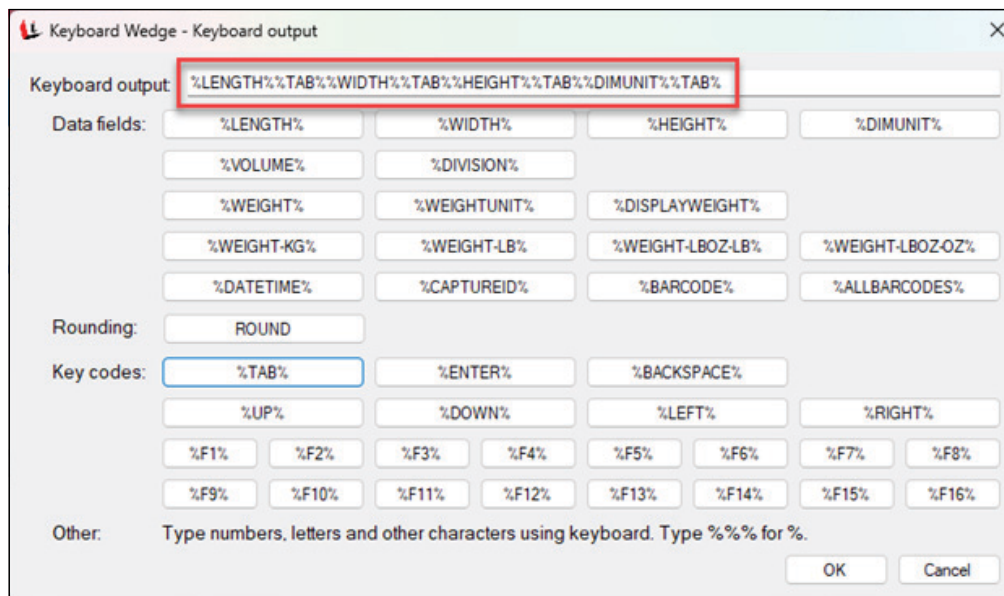


Figure 4-2. Keyboard Output Configuration



© Rice Lake Weighing Systems Content subject to change without notice.

230 W. Coleman St. • Rice Lake, WI 54868 • USA USA: 800-472-6703 • International: +1-715-234-9171