

# SURVIVOR<sup>®</sup> RT

RAIL/TRUCK SCALE



**RICE LAKE<sup>®</sup>**  
WEIGHING SYSTEMS

800-472-6703

[www.ricelake.com](http://www.ricelake.com)

# Heavyweight Loads Need Heavy-duty Track Scales

SURVIVOR® RT Series rail scales are up to the job. The RT is available in both steel and concrete deck configurations for weighing rail cars in 50-pound divisions and trucks in 20-pound divisions. Used in static weighing operations, the SURVIVOR RT pit-type railroad track scale excels in high-accuracy Legal for Trade weighing and meets AAR and Cooper E-80 design specifications.

## RELIABLE WEIGHING

These Legal for Trade scales generally require five- to six-foot deep pits and are ideal for overhead filling or dump applications—especially for construction materials, grain, agriculture, bulk cement, manufacturing and chemical applications. The extra large 36WF232 main beams with cross members and outriggers are able to withstand constant, heavy use, ensuring years of reliable service.

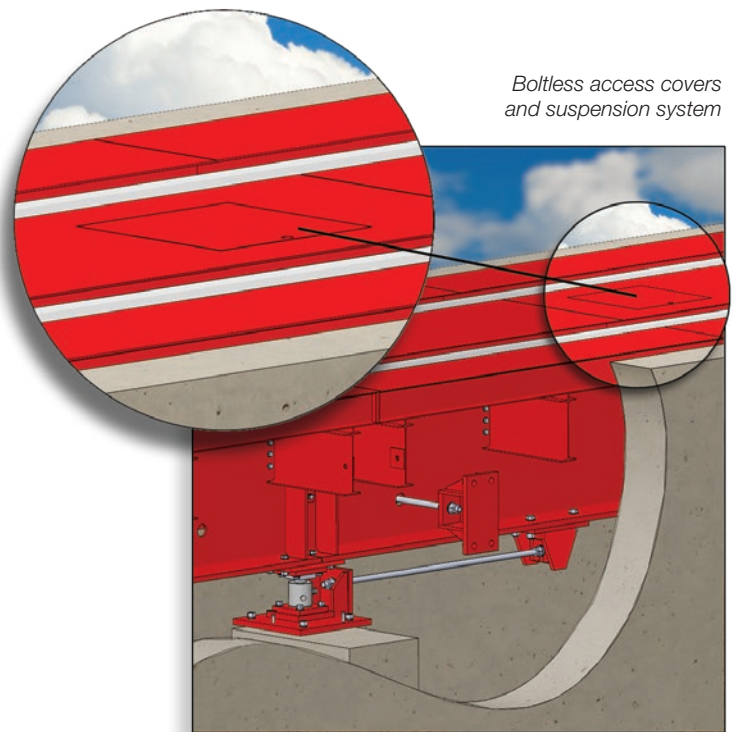
## MADE SURVIVOR STRONG

Every SURVIVOR rail scale is made onsite at Rice Lake Weighing Systems in Rice Lake, WI. All weighbridge components are shot-blasted and cleaned of debris, grease and oil. After welding and assembly, each scale is painted with a high-performance epoxy primer, followed by a finish of hard-coat, high-solids urethane primer and paint.

## FLEXIBLE CONFIGURATION

The SURVIVOR RT Series offers a variety of configurations, from steel or concrete decking, to numerous sizing options and capacities. Custom configurations are also available for existing foundations, making the RT Series the best choice for any application. There must be 25-foot concrete approaches on both ends of the scale.

| SURVIVOR RT Series Platform Sizes |               |          |
|-----------------------------------|---------------|----------|
| <i>Custom sizes available</i>     |               |          |
| Model                             | Platform Size | Capacity |
| RT-6610                           | 66ft × 10ft   | 200 tons |
| RT-7010                           | 70ft × 10ft   | 200 tons |
| RT-7210                           | 72ft × 10ft   | 200 tons |
| RT-7510                           | 75ft × 10ft   | 200 tons |
| RT-8010                           | 80ft × 10ft   | 200 tons |





# SURVIVOR® RT

## RAIL/TRUCK SCALE

The SURVIVOR RT is a pit-type, rail/truck combination scale. Perfect for weighing a variety of vehicles, the SURVIVOR RT is capable of weighing rail cars as well as trucks. The RT Series is available in a wide range of platform sizes and capacities, capturing accurate weights no matter where the rail car is positioned on the scale.

## Reasons to Choose a SURVIVOR Series Railroad Scale

### Selection

Choose from the SURVIVOR PL low profile, pitless modular design or the SURVIVOR RT pit-type combination rail/truck scale. Both designs possess Rice Lake's industry-leading features and legendary durability.

### Dependability

Perfect for customers who demand reliability, accuracy and confidence in a rail scale system.

### Durability

Designed to provide decades of dependable operation with low maintenance costs and less downtime.

### Performance

Ideal for use in heavy traffic areas where high-accuracy, Legal for Trade weighing is required.

### Craftsmanship

A best-in-class weighbridge design creates a rugged, heavy duty weighing system that exceeds AREMA and Cooper E-80 design specifications.

### Flexibility

They are available in a wide range of platform widths and lengths to accommodate most weighing applications.



### STANDARD FEATURES

- 200,000 lb capacity compression load cells
- Standard platform sizes: 60 ft, 66 ft, 70 ft, 72 ft, 80 ft, 90 ft and 100 ft
- 4 ft 9 in profile
- Pandrol clips
- Factory welded modules
- Steel or concrete deck
- Lightning and surge suppression kit
- In-bridge conduit runs
- 7 in reinforced concrete deck design
- (1) 24 in square manhole ring and cover
- Fully assembled factory welded modules

### OPTIONS

- Custom platform sizes and configurations
- Concrete approach hardware
- Additional manholes
- Grain dumps
- T-beam approach hardware
- Rail trough channel

### SPECIFICATIONS

|                            |   |
|----------------------------|---|
| <b>LOAD CELLS:</b>         | 200,000 lb capacity compression load cells                        |
| <b>GROSS CAPACITY:</b>     | 400,000 lb (Railway)<br>160,000 lb (Vehicle)                      |
| <b>SECTIONAL CAPACITY:</b> | 400,000 lb (Railway)  |
| <b>CLC:</b>                | 100,000 lbs (Vehicle)   |
| <b>WARRANTY:</b>           | Weighbridge: Five-year limited<br>Electronic Components: Two-year |

### APPROVALS:



Measurement  
Canada  
Approved

