

July 9, 2024
Rev: July 12, 2024

Product: Ishida ScaleLink Pro 5

Contents: Uni-8 and Uni-10 Scale Setup Is Incomplete after Loading Version 2.62

Solution: Loading Uni-8 and Uni-10 Scale Configuration Files



Authorized distributors and their employees can view or download this document from the Rice Lake Retail Solutions distributor site at www.ricelake.com/retail.

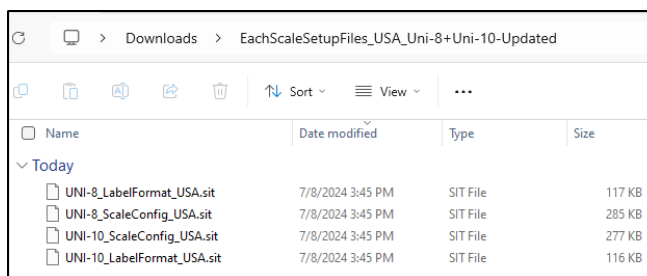
Issue

If ScaleLink Pro 5 is upgraded to version 2.62 and the previous setup file is used, the required settings, etc. to support the Uni-8 and Uni-10 scales will be missing.

Procedure

It is possible to load four files – two each for the Uni-8 and Uni-10 – to restore full functionality for the new scales. Follow the steps below to load the files provided by Rice Lake.

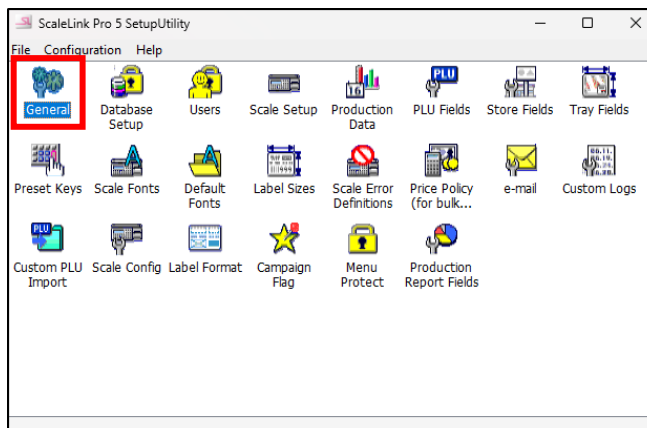
1. Download and unzip the ***EachScaleSetupFiles_USA_Uni-8+Uni-10-Updated.zip*** file.



2. Open the SLP-5 **Setup Utility** program.



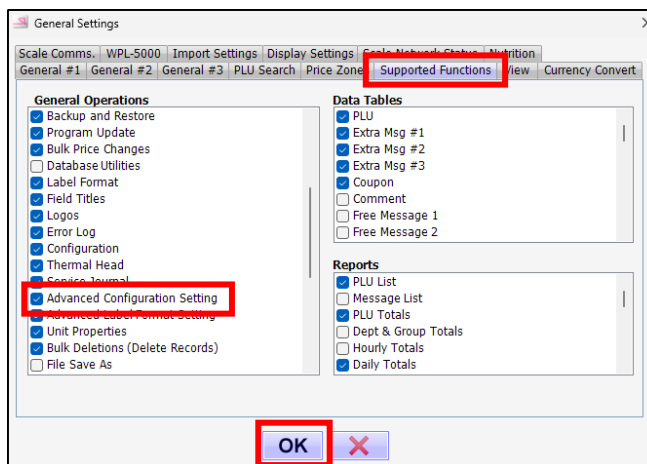
3. Open **General**.



4. Select the **Supported Functions** tab.

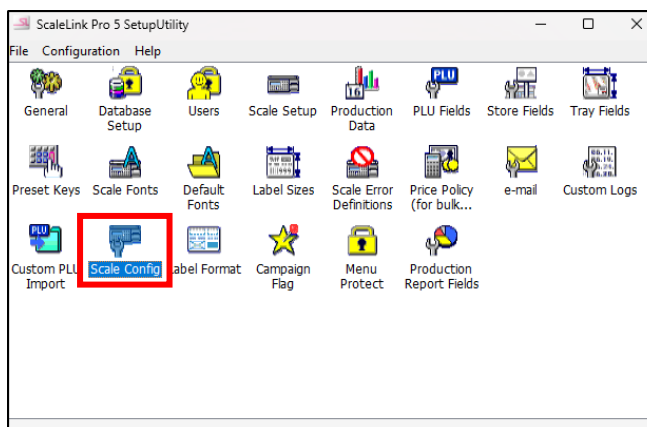
5. Under General Operations, enable **Advanced Configuration Settings**.

6. Click **OK**.

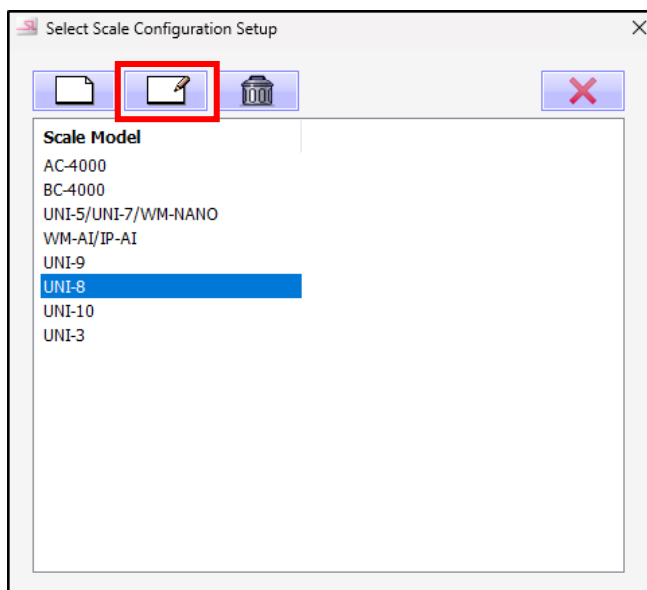


7. Close and reopen the **Setup Utility** program.

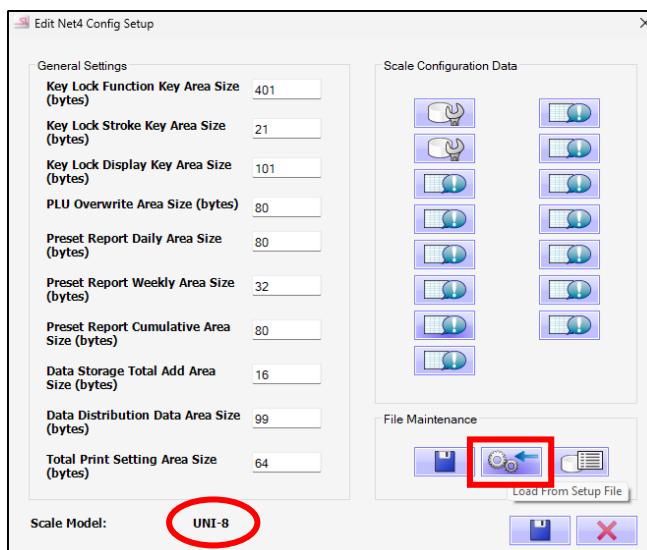
8. Open **Scale Config**.



9. Select **Uni-8** and click **Edit**.



10. Under File Maintenance, click **Load From Setup File**.



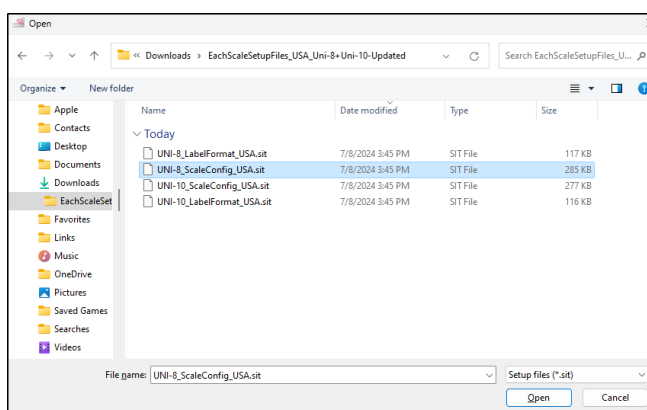
11. Navigate to the unzipped scale files.

12. Select the **UNI-8_ScaleConfig_USA.sit** file.

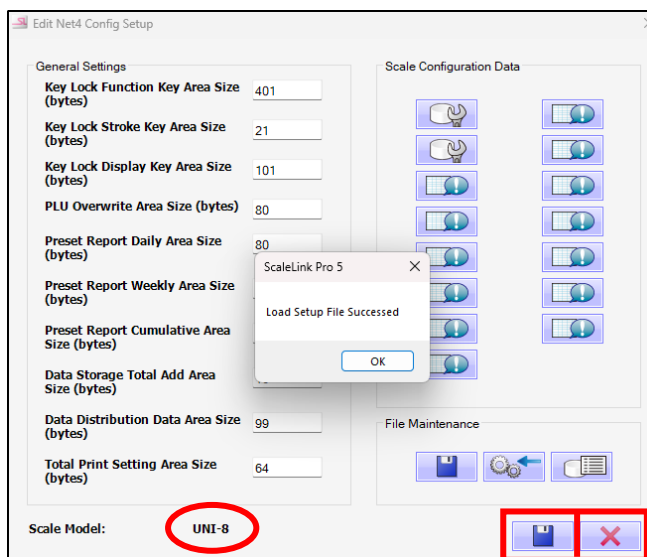
13. Click **Open**.



Loading the wrong file will corrupt SLP-5 and require the program to be reinstalled.

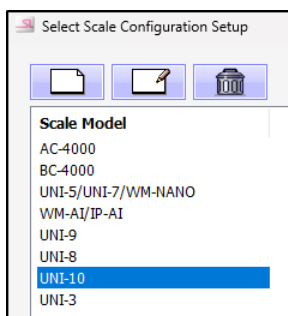


14. After approximately 10 seconds the file will finish loading with the "Load Setup File Succeeded" message.
15. Click **OK**.
16. Click the **Save** icon.
17. Click the red **"X"** to close.

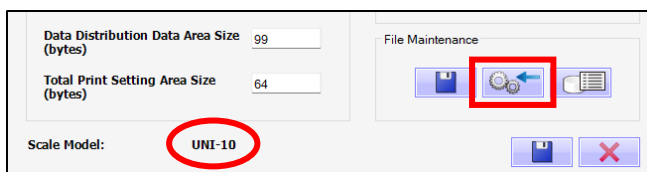


18. Repeat for the Uni-10.

- 18.1. Select **Uni-10** and click **Edit**.



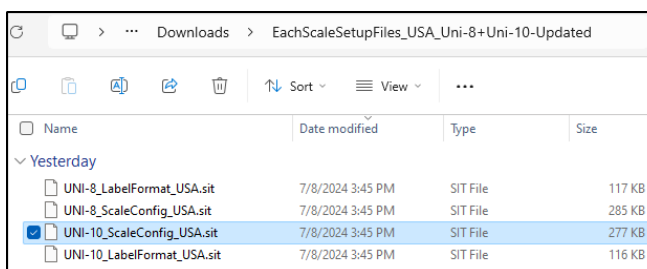
- 18.2. Under File Maintenance, click **Load From Setup File**.



- 18.3. Navigate to the unzipped scale files.

- 18.4. Select the **UNI-10_ScaleConfig_USA.sit** file.

- 18.5. Click **Open**.

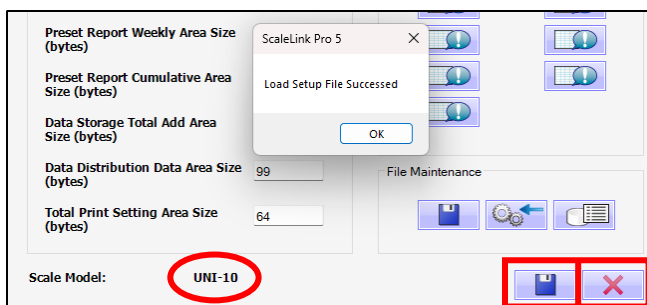


- 18.6. After approximately 10 seconds the file will finish loading with the "Load Setup File Succeeded" message.

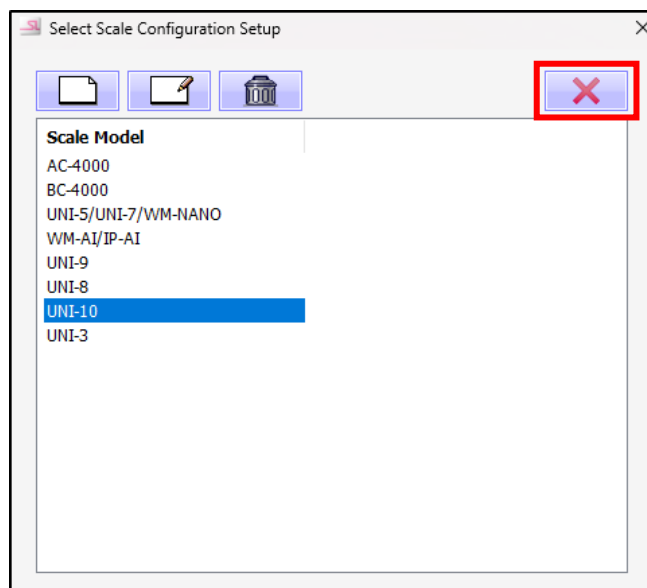
- 18.7. Click **OK**.

- 18.8. Click the **Save** icon.

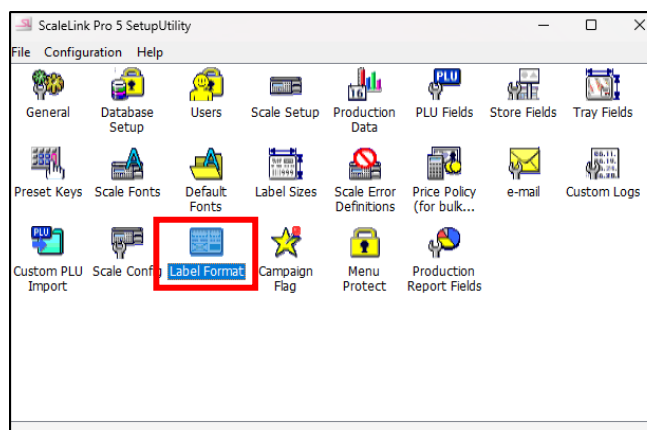
- 18.9. Click the red **"X"** to close.



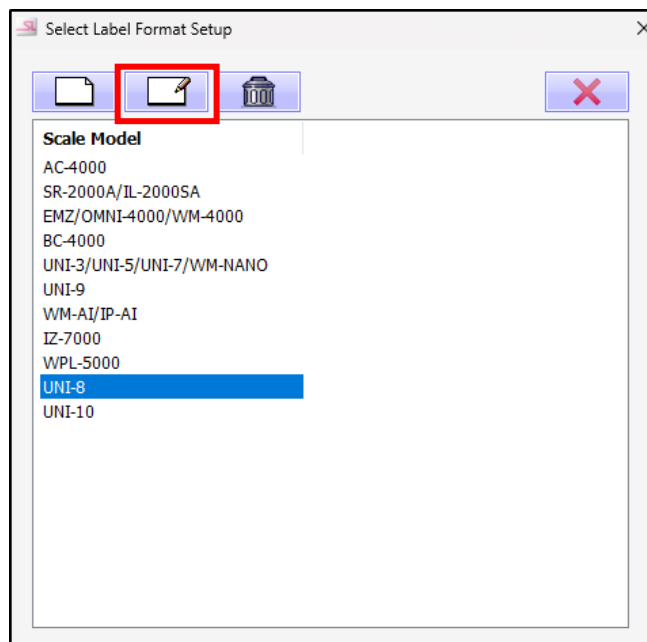
19. Click the red "X" to close the "Select Scale Configuration Setup" window.



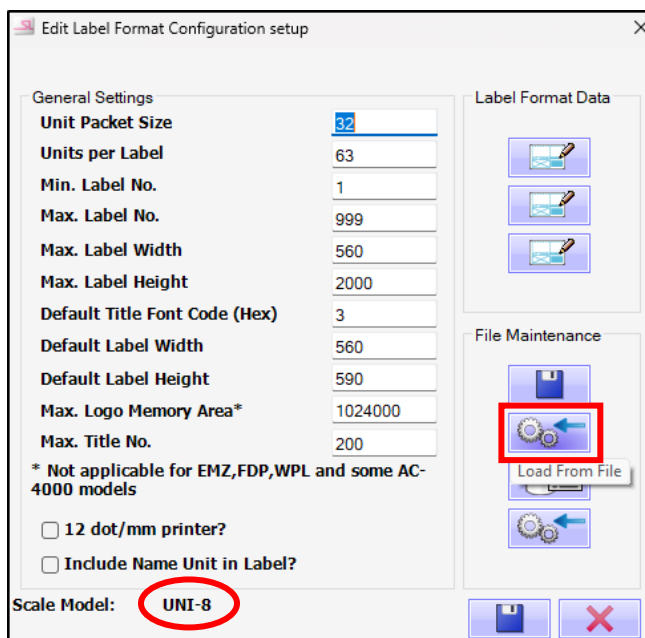
20. Open **Label Format**.



21. Select **Uni-8** and click **Edit**.



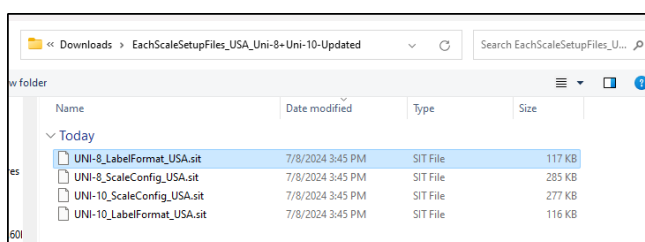
22. Under File Maintenance, click
Load From File.



23. Navigate to the unzipped scale files.

24. Select the
UNI-8_LabelFormat_USA.sit
file.

25. Click **Open**.

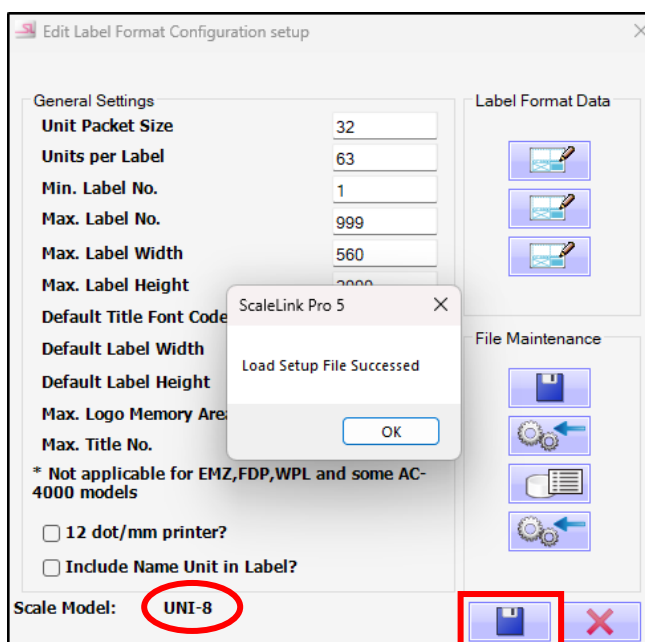


Loading the wrong file
will corrupt SLP-5 and
require the program to
be reinstalled.

26. After approximately 10
seconds the file will finish
loading with the "Load Setup
File Succeeded" message.

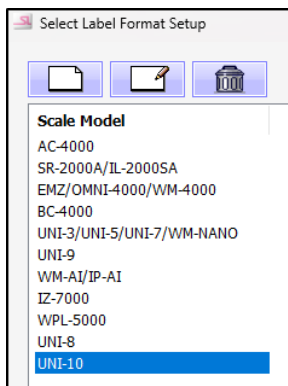
27. Click **OK**.

28. Click the **Save** icon.

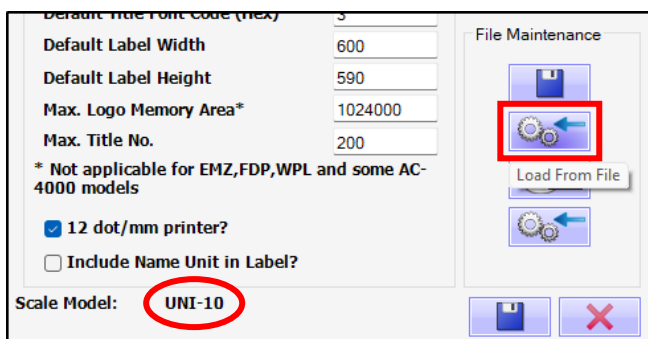


29. Repeat for the Uni-10.

29.1. Select **Uni-10** and click **Edit**.



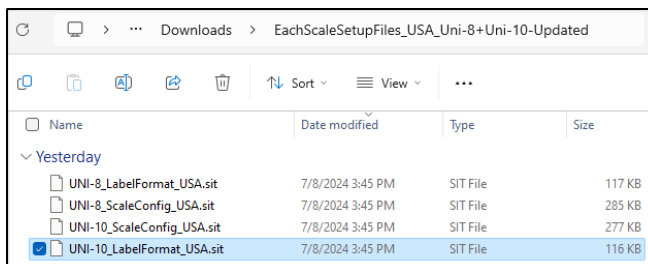
29.2. Click **Load From File**.



29.3. Navigate to the unzipped scale files.

29.4. Select the **UNI-10_LabelFormat_USA.sit** file.

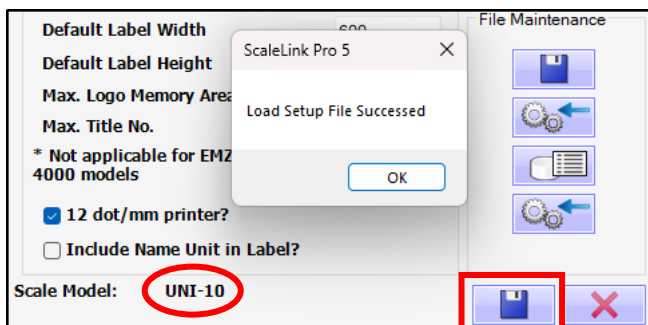
29.5. Click **Open**.



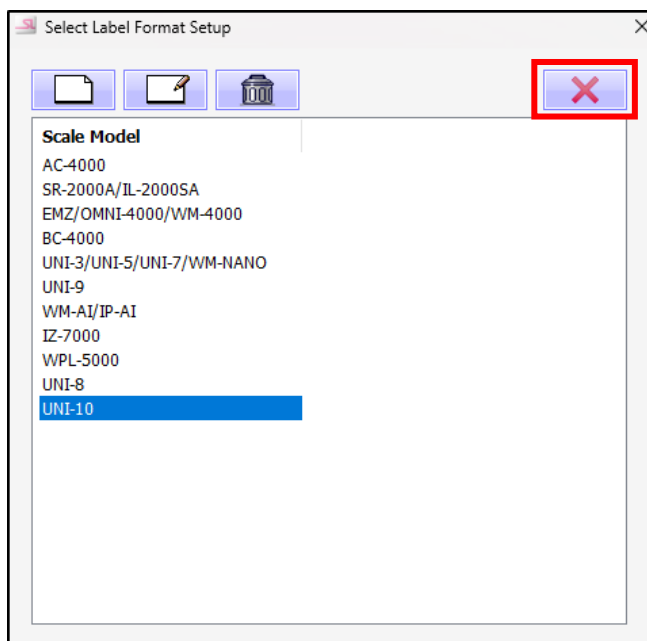
29.6. After approximately 10 seconds the file will finish loading with the "Load Setup File Succeeded" message.

29.7. Click **OK**.

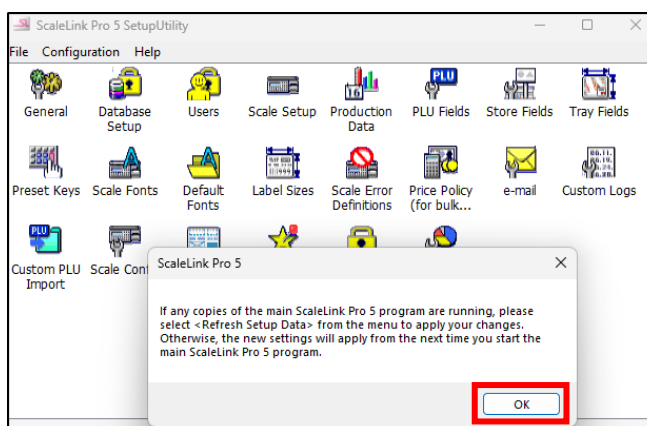
29.8. Click the **Save** icon.



30. Click the red "X" to close the "Select Label Format Setup" window.



31. Close the Setup Utility.
32. Click **OK**.



© Rice Lake Weighing Systems Specifications subject to change without notice.
Rice Lake Weighing Systems is an ISO 9001 registered company.

230 W. Coleman St. • Rice Lake, WI 54868 • USA
U.S. 800-472-6703 • Canada/Mexico 800-321-6703 • International 715-234-9171 • Europe +31 (0)26 472 1319

www.ricelake.com/retail

www.ricelake.mx

www.ricelake.eu

www.ricelake.co.in