



# Software Overview

BATCH RECIPE FORMULATION • DYNAMIC CHECKWEIGHING • FORKLIFT • OFFLINE SAMPLING • PALLET WEIGHING  
 STATIC CHECKWEIGHING • TRACEABILITY • TRANSPORTATION • WASTE • AND MUCH MORE!



**RICE LAKE®**  
 WEIGHING SYSTEMS

800-472-6703  
[www.ricelake.com](http://www.ricelake.com)



## Myrias Core

Myrias software consists of a core database module and application-specific modules. The core module collects data, processes reports and controls additional similar functions. The Myrias core appropriate for your application is determined by the number of devices you'll be collecting data from.

Core Module	Device Support
Myrias Core 20	Up to 20 Devices
Myrias Core 40	Up to 40 Devices
Myrias Core 80	Up to 120 Devices
Myrias Core SQL	SQL Core for larger and more complex systems

# Myrias®

## Integrated Software Solution

Myrias® is an enterprise software designed to help businesses improve operations, manage resources and drive growth. Myrias captures, monitors and reports all process data so companies can make more informed and strategic business decisions.

### A Modular System That Grows With Your Business

Myrias monitors, analyzes and adjusts processes so you can optimize efficiency and elevate profits. Choose from a wide range of capabilities including traceability, inventory tracking, production material monitoring and operator process guides, with reports available for all aspects of production.

Myrias is compatible with a variety of hardware manufactures, supports multiple languages and can be installed on a standalone Windows PC or run from a central server with networked stations.

Choose from a SQL database or Myrias' proprietary file-based database, or utilize both to store and process information. Easily integrate Myrias

with third-party ERP and MRP systems. File-import capability from third-party systems simplifies data integration from existing software systems to Myrias.

Utilize Myrias' management capabilities to easily start or stop jobs, and instantly access live reports and key performance indicator (KPI) screens. Reports can be generated in real-time, either locally or remotely for data access across multiple locations. Export data to third-party spreadsheet programs such as Microsoft Excel® for digital record-keeping and streamlined analysis.

## Application Modules

Myrias software has over 150 modules covering virtually every business requirement. This extensive modular system can be tailored and expanded to meet future business requirements, including everything from production to back-office functions. Standard modules are listed below.



### DYNAMIC CHECKWEIGHING

Record all packs from checkweighers with real-time charting and receive immediate warnings of low weights and expensive giveaways with Myrias. Comprehensive records help operators analyze pack weights and diagnose filling faults. Operators can also manage a product database from one PC to control settings for all of the checkweighers at a facility. Myrias also includes optional reporting capabilities for integrated metal detectors.



### FLOOR PALLET WEIGHING

Shipping and warehouse inventory systems greatly benefit from integrating real-time pallet weighing data for live views of product quantities and shipping status. Floor and forklift scales can be combined into a single database with Myrias, while allowing operators to label pallets by makeup, customer or storage.



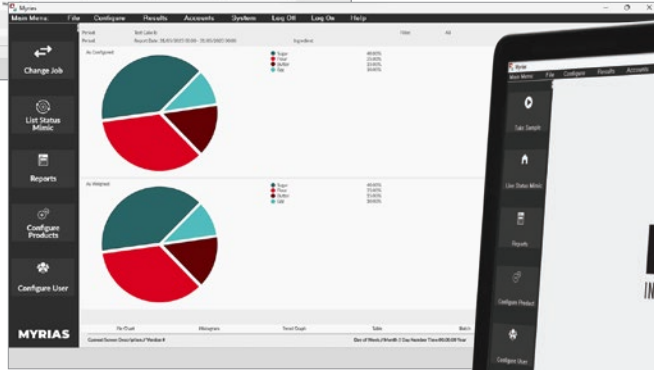
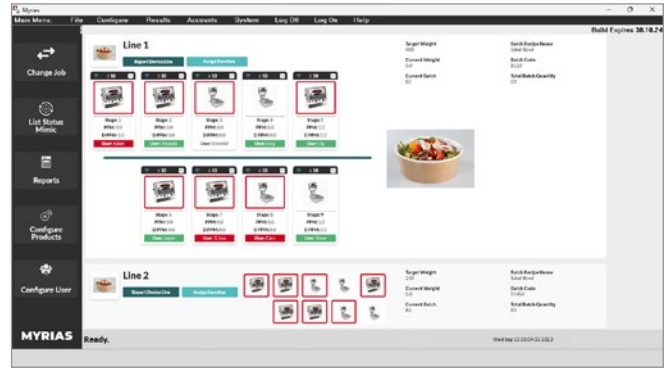
### FORKLIFT

Streamline material handling operations by integrating forklift scales to move and weigh pallets in one step. Myrias provides straight-forward prompts to guide operators through each pallet transaction. Warehouse and shipping department managers can also monitor forklift performance statistics and send real-time data via FTP for review.



### OFFLINE SAMPLING

Facilities can achieve precise control of pack fills to meet legal requirements and limit profit loss with offline sampling software. Powerful diagnostics help operators understand filling performance and minimize fill variability issues, while maintaining legally accepted records as proof of due diligence.



## RECIPE BATCH FORMULATION

Accurate ingredient weighing in batches, blends and mixes ensures consistent quality, reduced waste, better cost control and full traceability of ingredients for set recipes. Use Myrias to ensure accuracy and quality by automatically calculating ingredient weights for non-standard batch sizes and monitor compliance messages and manufacturing information during recipe batching.



## STATIC CHECKWEIGHING

Add efficiency to manufacturing, sorting and food-processing applications by continuously monitoring packs to ensure they are within a preset weight range. Control filling with checkweighing lights that notify operators of weight status and automatically record each weighment based on operator, product or other key data you determine.



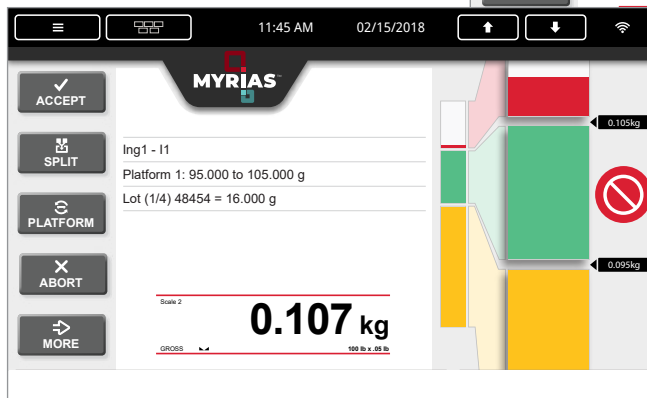
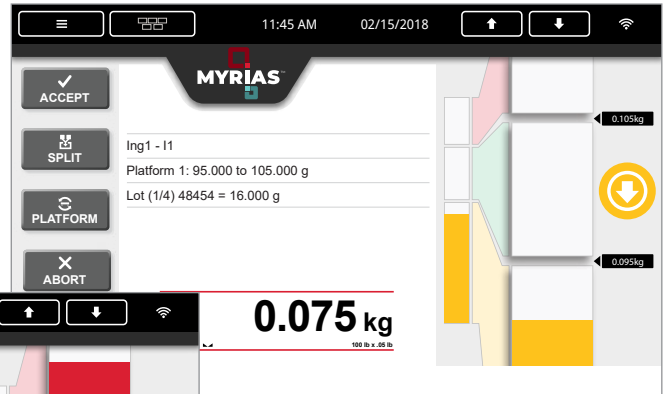
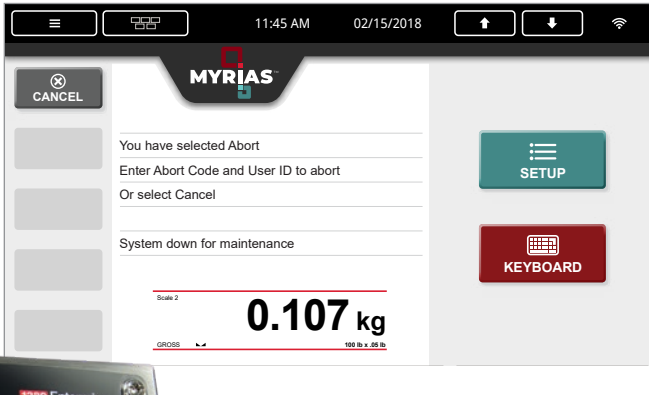
## TRUCK SCALE MANAGEMENT

Myrias integrates with OnTrak™ Enterprise truck scale data management software to provide easy monitoring and reporting on transactions, customer and hauler data, product inventory and more. OnTrak Enterprise supports an unlimited number of scales and when paired with Myrias, operators can maximize throughput while reducing data entry errors.



## WASTE AND SCRAP

Optimize profits by identifying, measuring and reducing waste throughout your operation, which also reduces cost associated with waste. Myrias allows multiple sites to be networked to regional or head offices to simplify order, account and report processing.



## Enhancement Modules

To increase the functionality of the already powerful application modules, several enhancement modules are also available.

### ADDITIONAL APPLICATION MODULES:

- MANUAL CHECKWEIGHING
- COUNTING
- BAG WEIGHING RECORDING
- AXLE WEIGHING
- BELT WEIGHING
- GOODS IN
- COUNTING PRO
- WAREHOUSE MANAGEMENT SYSTEM
- MANUAL WEIGH LABEL
- MANUAL WEIGH PRICE LABEL
- STOCK CONTROL
- OUTER CASE MARKER
- PRODUCTION PLANNING
- ORDER PROCESSING
- QUALITY ASSURANCE
- HUMAN RESOURCES



### TRACEABILITY

Minimize business risk in the event of a quality failure with the power to quickly identify affected items. Every transaction includes time, date, lot numbers and operator identity for full accountability. Easily locate process issues related to customer complaints.

### ADDITIONAL ENHANCEMENT MODULES:

- SCALE MANAGER
- DATA MANAGER
- WASTE AT INLINE SCALE
- QUALITY CONTROL
- GRADING
- BATCH YIELD SYSTEM
- MANUAL CHECKWEIGHING
- READY MEAL
- OFFLINE SAMPLING:
  - Quantity Average and Minimum Weight*
  - SPC Weight Recording*
  - Weight Recording by Band*
  - Quality Control*

## Hardware Requirements

Myrias software can be used with many different hardware devices and integrated with existing legacy systems. It's also available in multiple languages and can be installed on a standalone Windows PC or run from a central server with network-connected workstations.

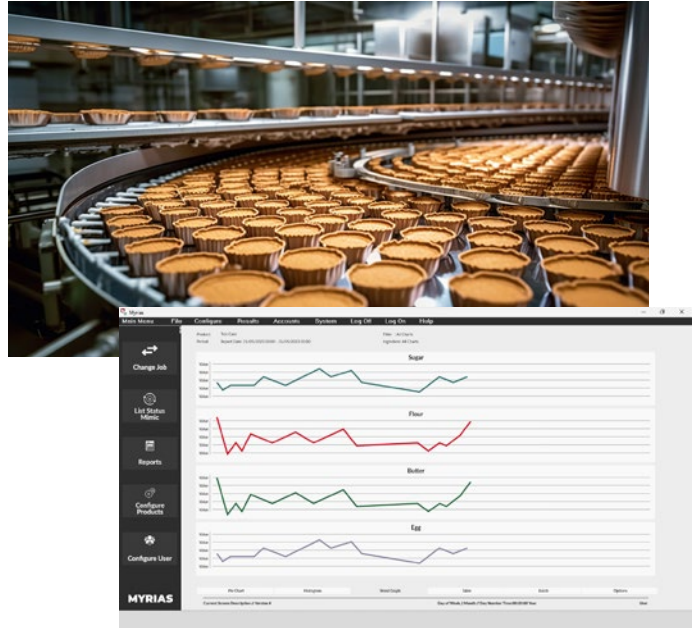
## Service and Support

Our experts are available to provide onsite or remote installation, software training and phone support. Annual maintenance agreements are also available to help prevent unnecessary process downtime.

## Request a Demonstration

Myrias software specialists will meet with your management, IT, production and operations teams to understand your unique process and help you choose the best module configuration for your business. Our team will help you determine how to customize a solution for your enterprise and will be available to modify or expand your Myrias system as your business grows.

Contact a representative in your area to request a Myrias software demonstration. Visit [www.ricelake.com/myrias](http://www.ricelake.com/myrias).



### STANDARD FEATURES

- Modular process management creates the best system for each facility
- Full material traceability
- Extensive real-time reports
- Monitor cost, product quality and regulatory compliance
- Works with many types of hardware and peripheral equipment including legacy hardware
- Integrate with third-party systems
- SQL database or proprietary file-based database