

RoughDeck®

ROUGH-N-READY FLOOR SCALES



RICE LAKE®
WEIGHING SYSTEMS

800-472-6703
www.ricelake.com

Ready for Tough Jobs

RoughDeck® Rough-n-Ready floor scale systems combine the durability of RoughDeck scales with the power of a Rice Lake indicator.

The RoughDeck Rough-n-Ready system is available in 4-foot by 4-foot, 5,000 or 10,000 pound capacities. Each floor scale and indicator is factory calibrated so systems can be used immediately upon setup.

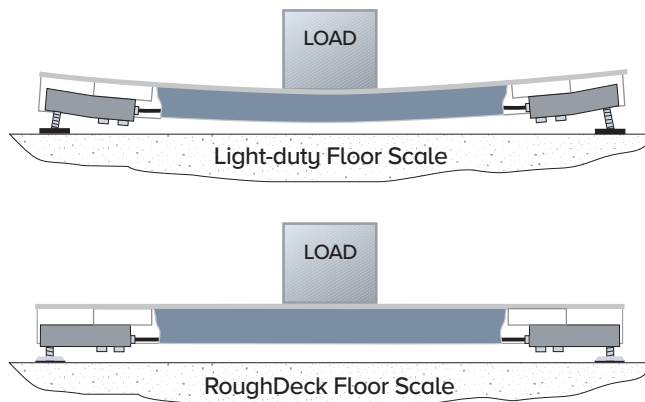
The NEMA Type 4X stainless steel TuffSeal® junction box is installed in a channel of the structural steel frame for protection from forklift tines. The junction box is mounted on a slide-out

tray to simplify setup and maintenance. NTEP Certified, alloy steel load cells are also placed within steel channels and cables are enclosed within conduit to protect electronics from potential damage.

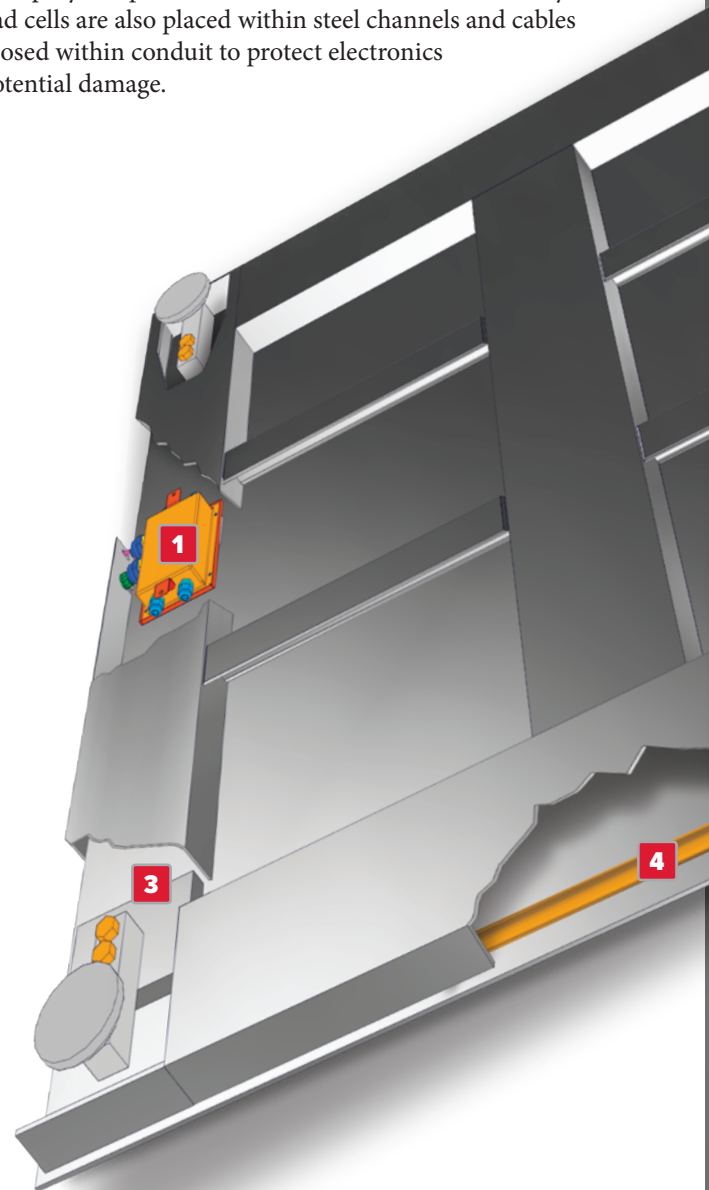
RoughDeck® is Simply the Toughest Floor Scale Available

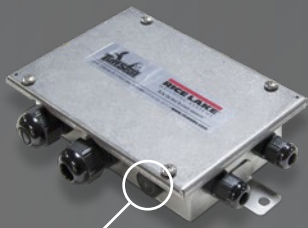
Superior Structural Design

This design has proven so superior that RoughDeck carries a full five-year warranty on the deck structure.



The RoughDeck design minimizes deflection of the deck and feet for greater accuracy and repeatability with every weighing.





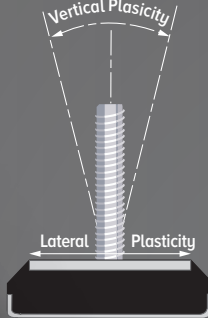
1 TUFFSEAL® JUNCTION BOX

The rugged, stainless steel TuffSeal junction box is specifically designed to protect sensitive circuitry. Its unique closure design prevents moisture ingress and a Gore® breather vent helps equalize pressure inside the enclosure which can be caused by sudden temperature or environmental changes.

GORE, GORE-TEX and design are registered trademarks of W.L. Gore & Associates, Inc.



Gore™
breather vent

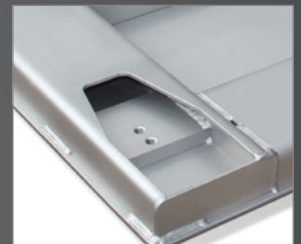


2 SUREFOOT™ FOR ACCURACY

SUREFOOT decreases extraneous forces on the load cell, resulting in superior accuracy and repeatability. A stainless steel cup sits on the floor and is bonded by a pliable neoprene cushion to a stainless steel top plate with attached threaded stem, allowing the stem and top plate to move laterally and tilt independently of the bottom stainless steel cup.

3 LOAD CELL MOUNTING PLATE

Localized deflection of the load cell is minimized by welding the mounting plate to the channel frame rather than the deck plate.



4 LOAD CELL AND CABLE PROTECTION

Load cells are recessed within the channels, and conduit lies within the channels to deter rodent damage and help protect components from rough handling.

5 INDICATORS



FEATURES

- LCD display
- Battery powered
- AA or NiMH
- Two communication ports



FEATURES

- LED display
- 8 internal setpoints
- Ethernet TCP/IP



FEATURES

- LCD display
- Alkaline battery or optional AC adapter



FEATURES

- LCD back light display
- 8 internal setpoints
- Available with full keypad (Plus)



FEATURES

- LCD display
- 8 internal setpoints
- Available with full keypad (Plus)

RoughDeck®

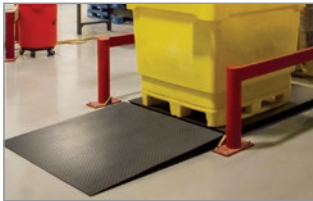
ROUGH-N-READY FLOOR SCALES

Installation options add versatility to your RoughDeck

Bumper guards



Access ramps



Floor anchor plates

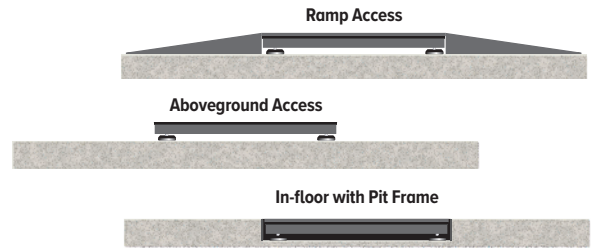


Indicator floor stand

Pit frame

Portability frame with casters

INSTALLATION OPTIONS



STANDARD FEATURES

- Package includes: RoughDeck HP 4 ft × 4 ft × 3.5 in floor scale, 20 ft of hostile environment load cell cable, quick disconnect and indicator
- Package is factory-calibrated for 5,000 divisions

SCALE

- Heavy-duty design with structural steel under support
- Four NTEP Certified alloy steel shear beam load cells
- Side-access JB4SS TuffSeal® junction box

ROUGHDECK SPECIFICATIONS

END LOAD CAPACITY:	100% full scale at 5,000 lb 80% full scale at 10,000 lb
CABLE LENGTH:	20 ft (6.1 m) for connecting junction box to indicator
THREADED EYEBOLT:	Hole (1/2-20 NF) located in center of deck for easy lifting
WARRANTY (LIMITED):	Weldment: Five years Load cells: Two years All other components: One year

ROUGHDECK APPROVALS



Measurement Canada Approved
AM-4827, Class III 5,000d

INDICATOR SPECIFICATIONS

	380 SYNERGY SERIES	381 SYNERGY SERIES	480/480 PLUS SYNERGY SERIES	482/482 PLUS SYNERGY SERIES	680 SYNERGY SERIES
COMMUNICATION PORTS	One RS-232 (three-wire) One USB 2.0 (device)	One full-duplex RS-232 One USB 2.0	Com 1: RS-232 full duplex Com 2: RS-232 full duplex or 20 mA simplex, continuous	Com 1: RS-232 full duplex Com 2: RS-232 full duplex or 20 mA simplex, continuous	Two RS-232 (three-wire) RS-485/RS-422 (two-wire or four-wire) Micro USB (device) Ethernet TCP/IP (10/100)
DISPLAY	Six 1 in (25 mm) tall, LCD digits	Six 1 in (25 mm) tall, LCD digits	LED display 0.8 in (20 mm), six-digit, seven-segment	LCD backlit display, Transmissive/Transflective 0.8 in (20 mm), six-digit, seven-segment	Seven 0.8 in tall, seven-segment digits
ANNUNCIATORS	g, lb, t, tn, kg, oz, battery level, PT, LT, gross, zero, unstable, net	g, lb, t, tn, kg, oz, battery level, PT, LT, gross, zero, unstable, net	Gross, net, center of zero, standstill, lb, kg, tare, preset tare	Gross, net, center of zero, standstill, lb, kg, tare, preset tare	Eight LED annunciators
RATING	IP66	AA Battery: IP54, ABS NiMH Battery: IP66, ABS	NEMA Type 4X/IP66	NEMA Type 4X/IP66	IP69K
APPROVALS					
POWER	Batteries: 4 alkaline C-cell (not included) Optional: 115/230 VAC to 12 VDC adapter	Battery: AA or Nickel Metal Hydride (NiMH) 381-2D-AA Adapter: 115/230 VAC to 12 VDC 381-2D-NiMH Charger: 115/230 VAC	Line voltages: 100 to 240 VAC Frequency: 50/60 Hz	Line voltages: 100 to 240 VAC Frequency: 50/60 Hz	LINE VOLTAGES: 100 TO 240 VAC FREQUENCY: 50 TO 60 HZ
BATTERY LIFE	45 hours, continuous use on alkaline batteries with four 350 ohm load cells, low backlight	AA: 40 hours with 1 × 350 ohm load cell NiMH: 80 hours with 1 × 350 ohm load cell	DC voltages: n/a	DC voltages: n/a	DC voltages: n/a

SALES AND TECHNICAL ASSISTANCE

CORPORATE HEADQUARTERS: Rice Lake, Wisconsin, U.S.
USA: 800-472-6703 | Direct: 715-234-9171 | Fax: 715-234-6967

RICE LAKE
WEIGHING SYSTEMS

Canada: +1-800-321-6703 | Mexico: +52 81 8356 5062 | Europe: +39 0536 843418 | International Direct: +1-715-234-9171

www.ricelake.com